

DATA SHEET



Three Phase Induction Motor - Squirrel Cage

Customer		:				
Product line		: JM Pump NEMA Premium Efficiency Three-Phase		Product code : 14327904		
				Catalog # : 01518OT3H254JM-SG		
Frame		: 254/6JM		Locked rotor time		
Output		: 15 HP (11 kW)		: 30s (cold) 17s (hot)		
Poles		: 4		Temperature rise		
Frequency		: 60 Hz		: 80 K		
Rated voltage		: 575 V		Duty cycle		
Rated current		: 14.9 A		: Cont.(S1)		
L. R. Amperes		: 100 A		Ambient temperature		
LRC		: 6.7x(Code H)		: -20°C to +40°C		
No load current		: 7.60 A		Altitude		
Rated speed		: 1775 rpm		: 1000 m.a.s.l.		
Slip		: 1.39 %		Cooling method		
Rated torque		: 44.4 ft.lb		: IC01 - ODP		
Locked rotor torque		: 240 %		Mounting		
Breakdown torque		: 300 %		: F-1		
Insulation class		: F		Rotation ¹		
Service factor		: 1.15		: Both (CW and CCW)		
Moment of inertia (J)		: 1.82 sq.ft.lb		Noise level ²		
Design		: B		: 64.0 dB(A)		
				Starting method		
				: Direct On Line		
				Approx. weight ³		
				: 175 lb		
Output	25%	50%	75%	100%	Foundation loads	
Efficiency (%)	91.0	91.7	92.4	93.0	Max. traction	
Power Factor	0.36	0.62	0.73	0.80	: 551 lb	
				Max. compression		
				: 726 lb		
		<u>Drive end</u>		<u>Non drive end</u>		
Bearing type		: 6309 Z C3		6208 Z C3		
Sealing		: Without Bearing Seal		Without Bearing Seal		
Lubrication interval		: 20000 h		20000 h		
Lubricant amount		: 13 g		8 g		
Lubricant type		: Mobil Polyrex EM				
Notes						
This revision replaces and cancel the previous one, which must be eliminated.						
(1) Looking the motor from the shaft end.						
(2) Measured at 1m and with tolerance of +3dB(A).						
(3) Approximate weight subject to changes after manufacturing process.						
(4) At 100% of full load.						
These are average values based on tests with sinusoidal power supply, subject to the tolerances stipulated in NEMA MG-1.						
Rev.	Changes Summary			Performed	Checked	Date
Performed by						
Checked by					Page	Revision
Date	13/04/2022				1 / 6	

TORQUE AND CURRENT VS SPEED CURVE

Three Phase Induction Motor - Squirrel Cage



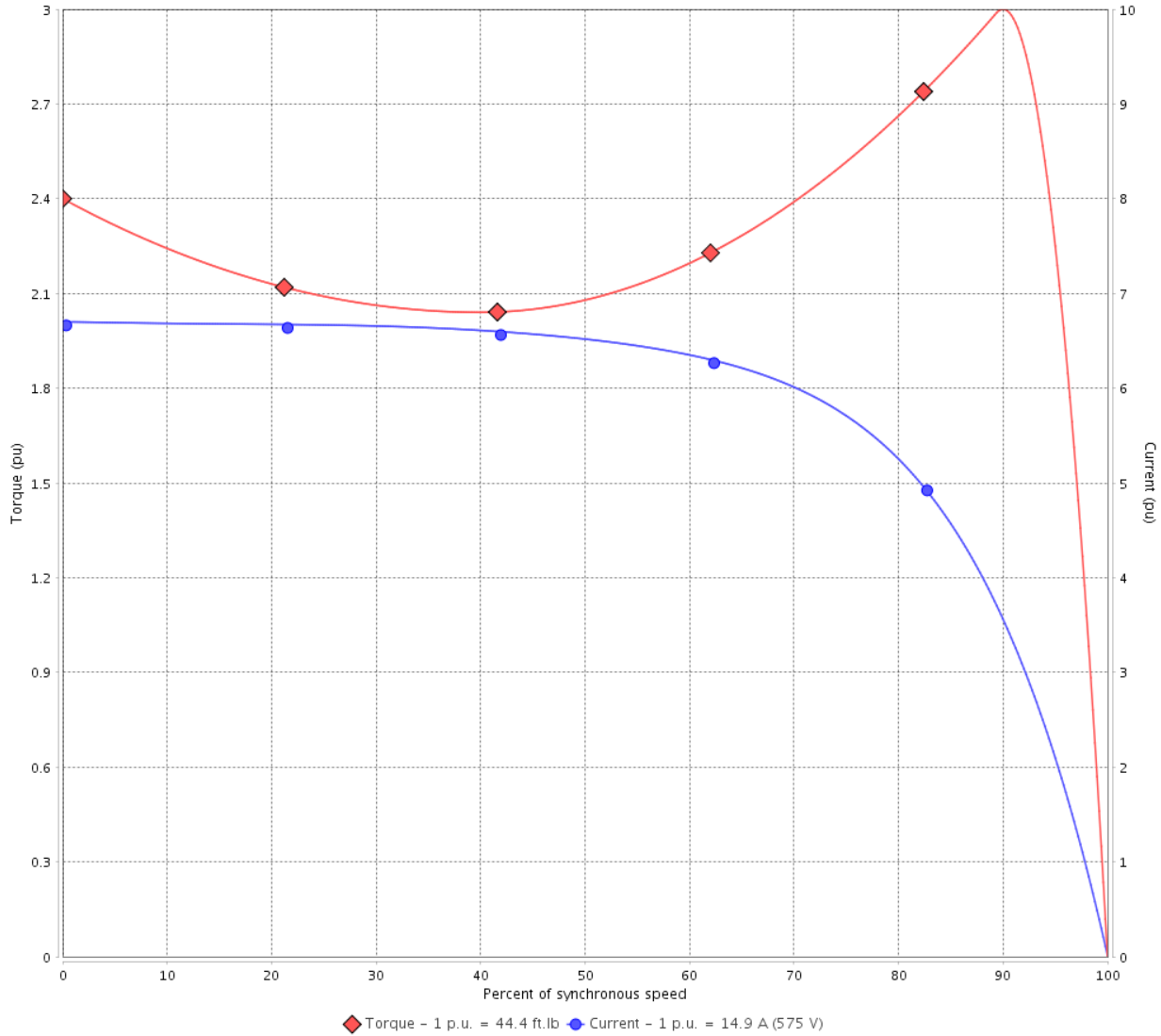
Customer :

Product line : JM Pump NEMA Premium
Efficiency Three-Phase

Product code : 14327904

Catalog # : 01518OT3H254JM-SG

TORQUE AND CURRENT VS SPEED CURVE



Performance : 575 V 60 Hz 4P

Rated current	: 14.9 A	Moment of inertia (J)	: 1.82 sq.ft.lb
LRC	: 6.7	Duty cycle	: Cont.(S1)
Rated torque	: 44.4 ft.lb	Insulation class	: F
Locked rotor torque	: 240 %	Service factor	: 1.15
Breakdown torque	: 300 %	Temperature rise	: 80 K
Rated speed	: 1775 rpm	Design	: B

Locked rotor time : 30s (cold) 17s (hot)

Rev.	Changes Summary	Performed	Checked	Date
Performed by			Page 2 / 6	Revision
Checked by				
Date	13/04/2022			

LOAD PERFORMANCE CURVE

Three Phase Induction Motor - Squirrel Cage

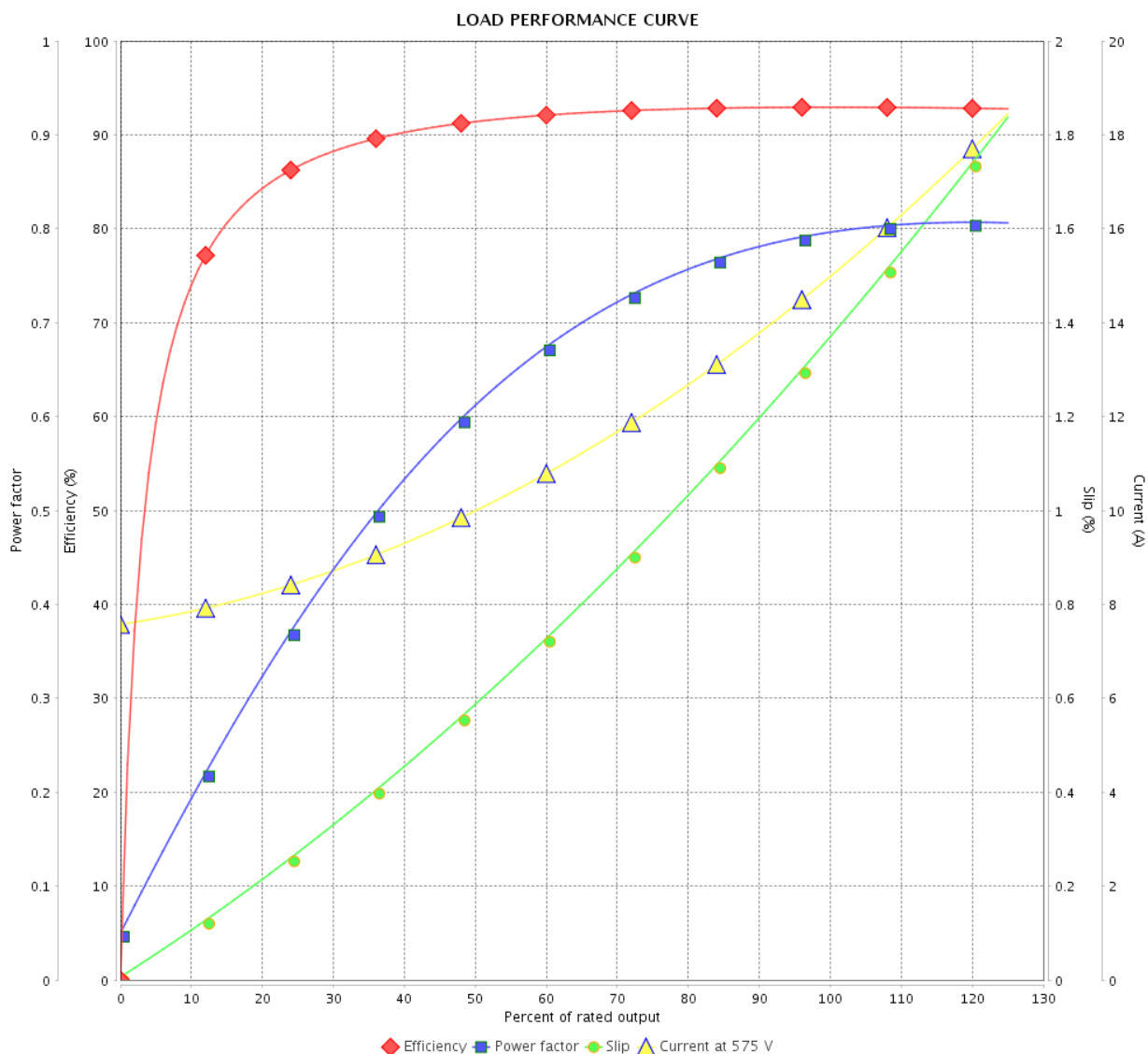


Customer :

Product line : JM Pump NEMA Premium Efficiency Three-Phase

Product code : 14327904

Catalog # : 01518OT3H254JM-SG



Performance : 575 V 60 Hz 4P

Rated current : 14.9 A
 LRC : 6.7
 Rated torque : 44.4 ft.lb
 Locked rotor torque : 240 %
 Breakdown torque : 300 %
 Rated speed : 1775 rpm

Moment of inertia (J) : 1.82 sq.ft.lb
 Duty cycle : Cont.(S1)
 Insulation class : F
 Service factor : 1.15
 Temperature rise : 80 K
 Design : B

Rev.	Changes Summary	Performed	Checked	Date
Performed by		Page		Revision
Checked by		3 / 6		
Date		13/04/2022		

THERMAL LIMIT CURVE



Three Phase Induction Motor - Squirrel Cage

Customer :

Product line : JM Pump NEMA Premium
Efficiency Three-Phase

Product code : 14327904

Catalog # : 01518OT3H254JM-SG

Performance : 575 V 60 Hz 4P

Rated current	: 14.9 A	Moment of inertia (J)	: 1.82 sq.ft.lb
LRC	: 6.7	Duty cycle	: Cont.(S1)
Rated torque	: 44.4 ft.lb	Insulation class	: F
Locked rotor torque	: 240 %	Service factor	: 1.15
Breakdown torque	: 300 %	Temperature rise	: 80 K
Rated speed	: 1775 rpm	Design	: B

Heating constant

Cooling constant

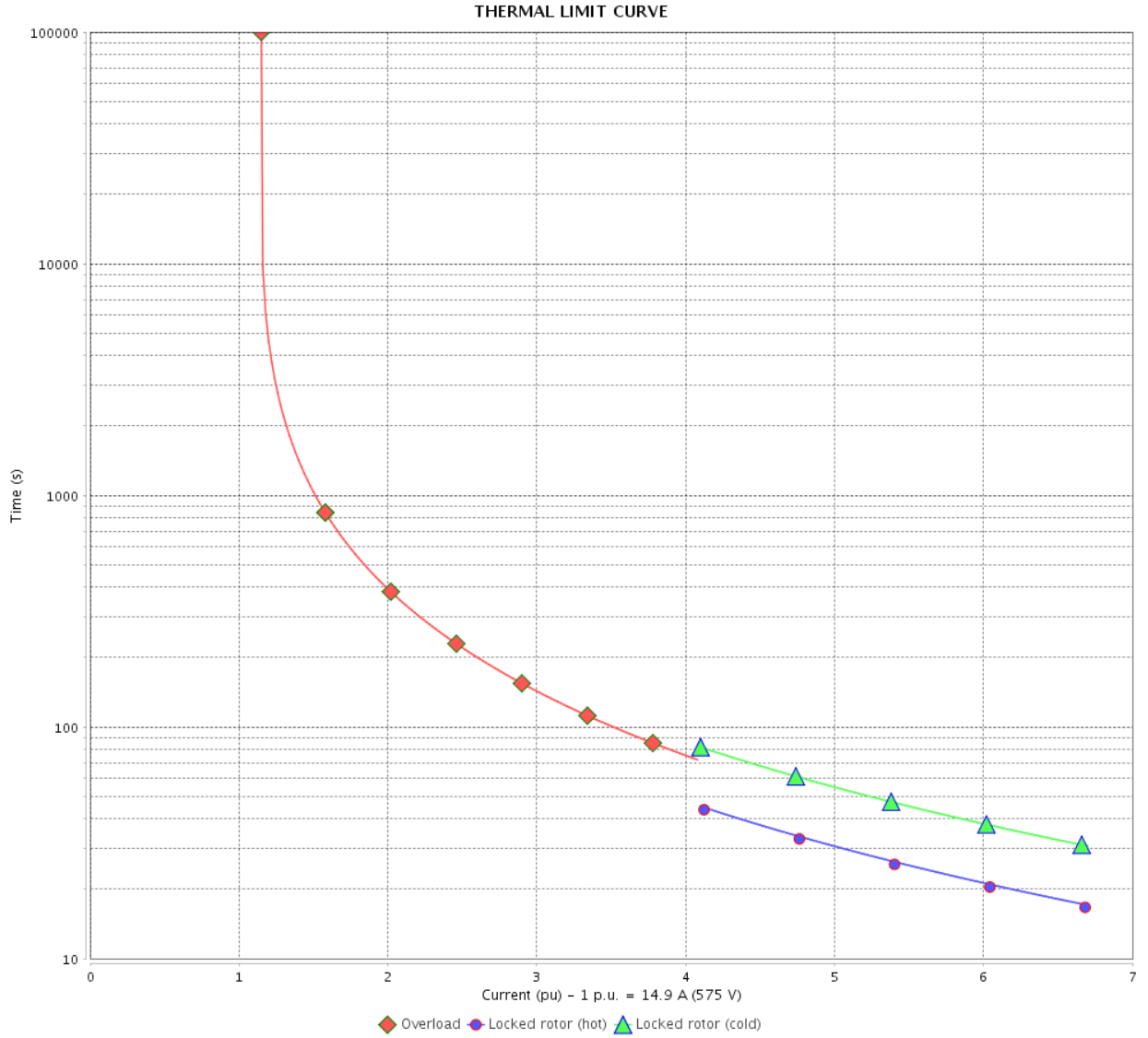
Rev.	Changes Summary	Performed	Checked	Date
Performed by				
Checked by			Page	Revision
Date	13/04/2022		4 / 6	

THERMAL LIMIT CURVE

Three Phase Induction Motor - Squirrel Cage



Customer : _____



Rev.	Changes Summary	Performed	Checked	Date
Performed by		Page Revision 5 / 6		
Checked by				
Date				

VFD OPERATION CURVE

Three Phase Induction Motor - Squirrel Cage



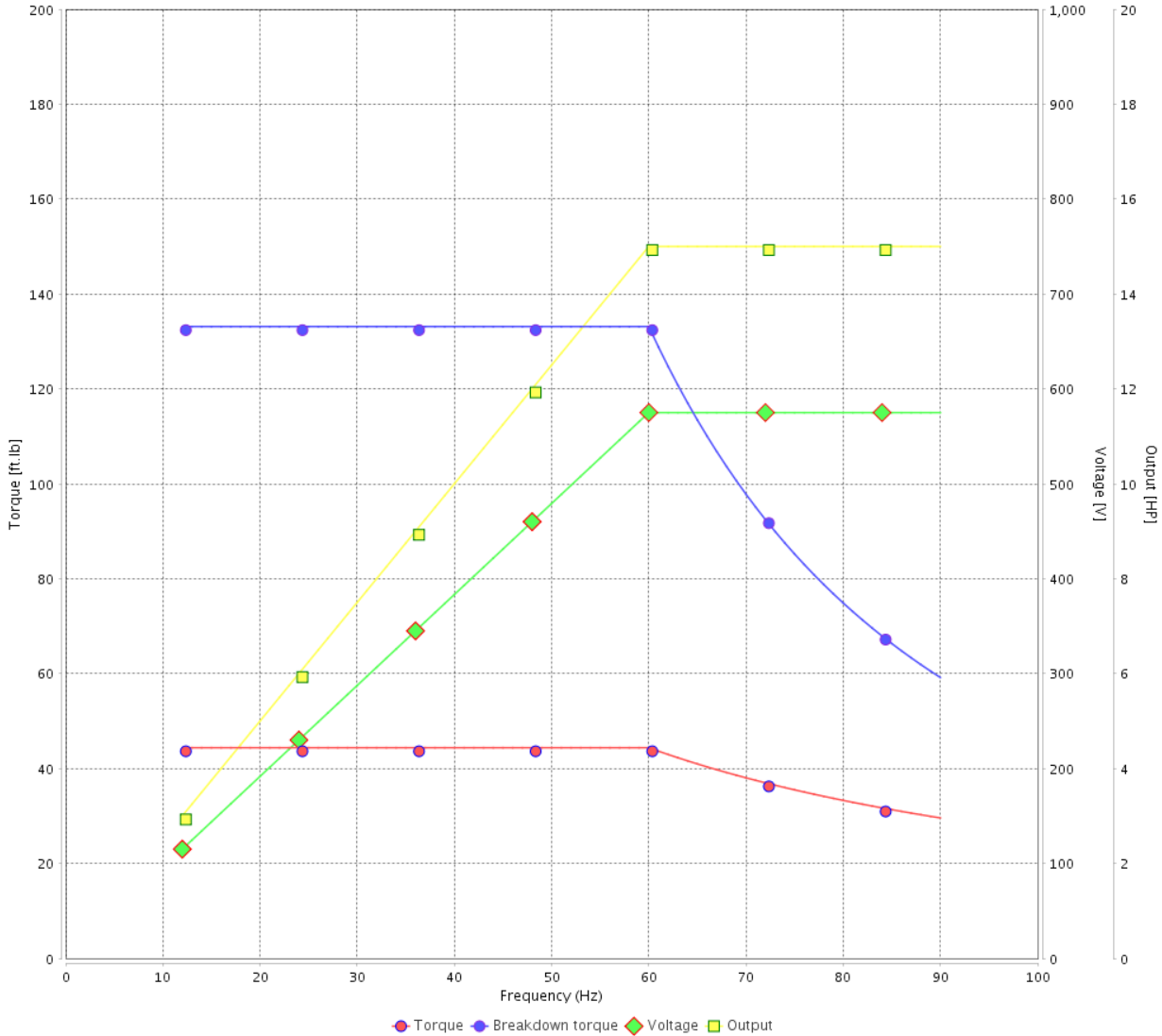
Customer :

Product line : JM Pump NEMA Premium Efficiency Three-Phase

Product code : 14327904

Catalog # : 01518OT3H254JM-SG

VFD OPERATION CURVE



Performance : 575 V 60 Hz 4P

Rated current : 14.9 A
 LRC : 6.7
 Rated torque : 44.4 ft.lb
 Locked rotor torque : 240 %
 Breakdown torque : 300 %
 Rated speed : 1775 rpm

Moment of inertia (J) : 1.82 sq.ft.lb
 Duty cycle : Cont.(S1)
 Insulation class : F
 Service factor : 1.15
 Temperature rise : 80 K
 Design : B

Rev.	Changes Summary	Performed	Checked	Date
Performed by			Page 6 / 6	Revision
Checked by				
Date	13/04/2022			

1 2 3 4 5 6

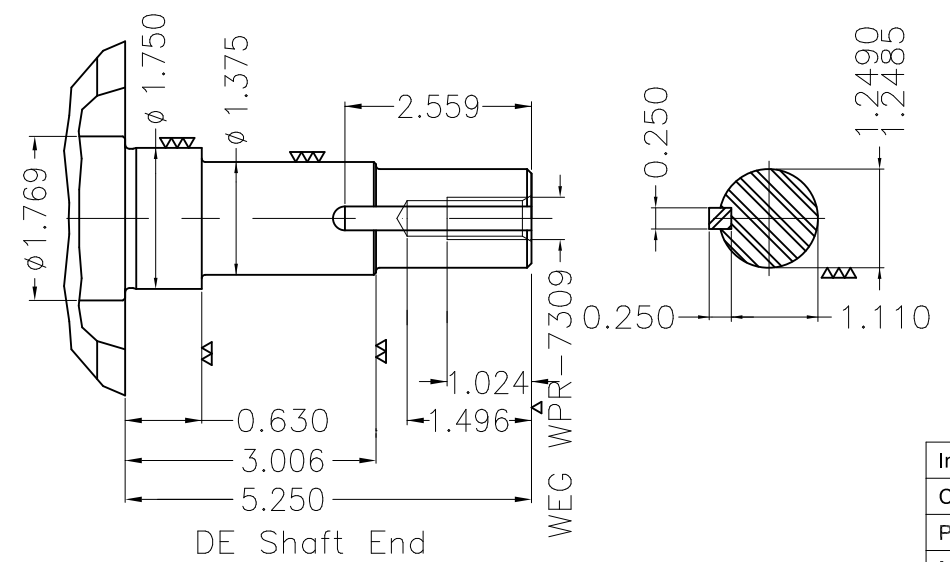
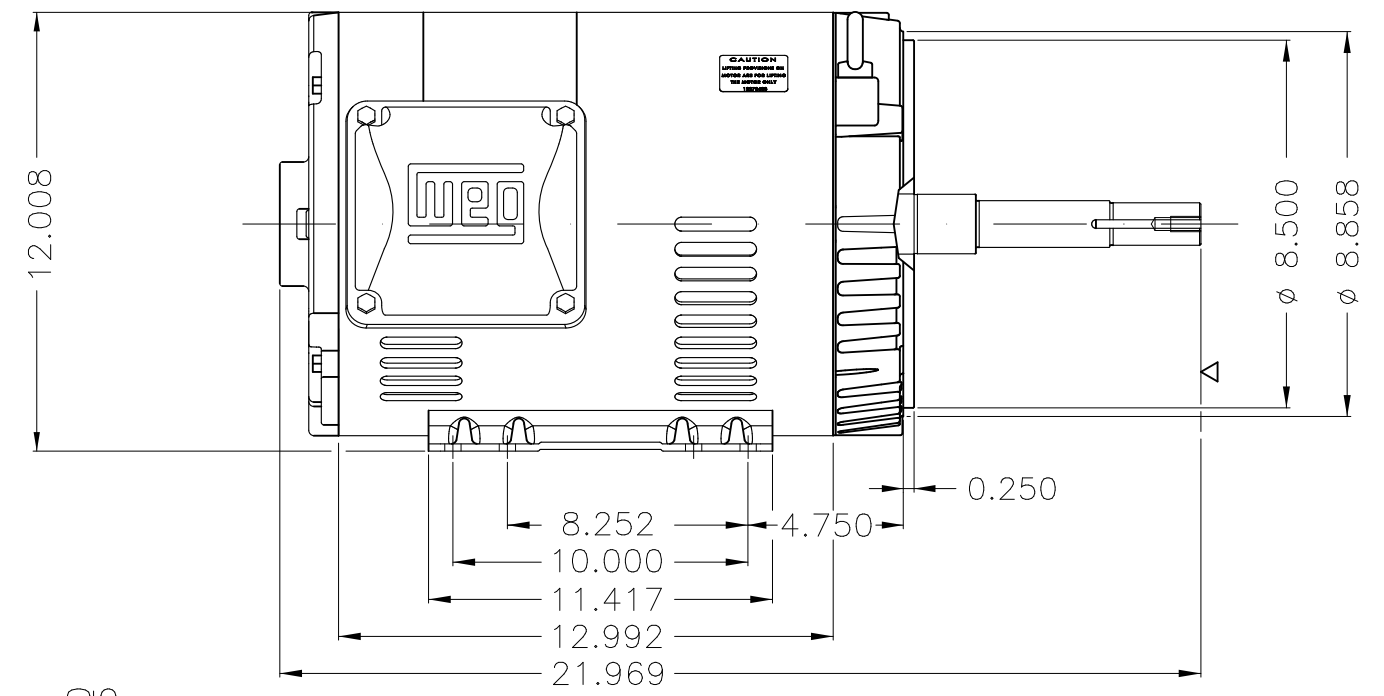
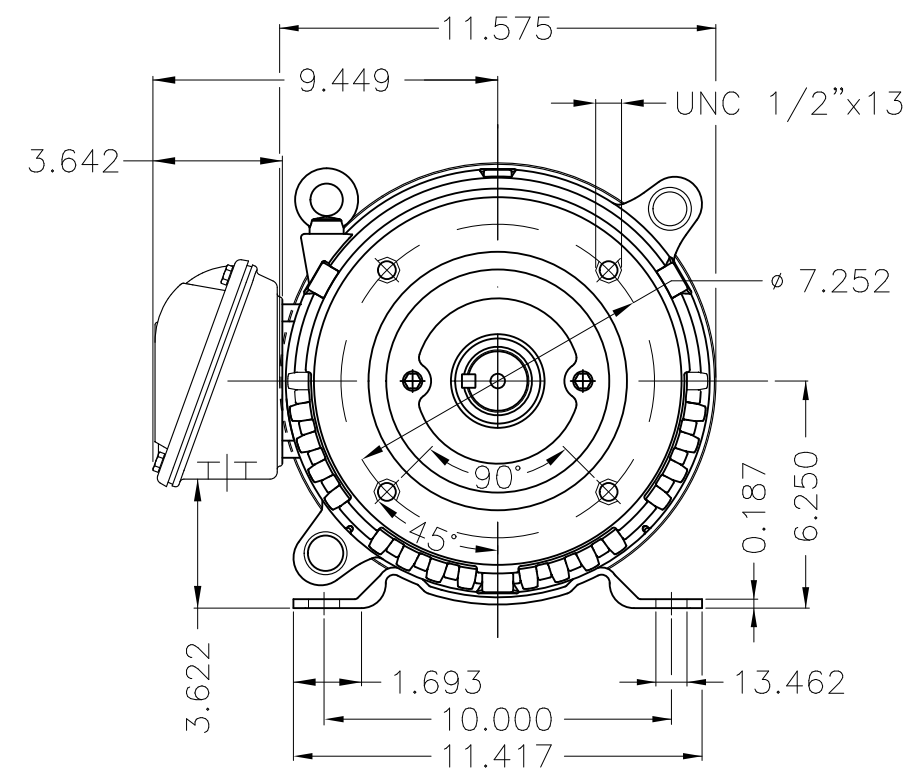
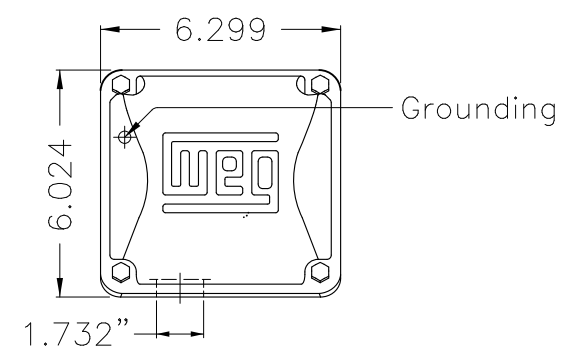
A

B

C

D

E



EUNC 1/2"-13 WEG WPR-7309

Internal AEGIS ground ring on the DE
 Color Munsell N 1 matte black
 Painting plan 207N
 Mounting F-1/B34R(D)

ECM	LOC	SUMMARY OF MODIFICATIONS	EXECUTED	CHECKED	RELEASED	DATE	VER
EXECUTED	PIRBUSER	THREE PH. MOTOR ROLLED STEEL CLOSE COUPLED PUMP JN TYPE PSE 1/2 HP					
CHECKED		FRAME 254/6JM IP21 ODP					
RELEASED							
REL DT.	WMO	Jaragua do Sul	Product Engineering	WDD	SHEET	1 / 1	

15 HP 04 Poles 60 Hz

Dimensions in inches XME A3

