

DATA SHEET



Three Phase Induction Motor - Squirrel Cage

Customer		:				
Product line		: JM Pump NEMA Premium Efficiency Three-Phase		Product code : 14478850		
				Catalog # : 01536ET3H215JM-SG		
Frame		: 213/5JM		Locked rotor time		
Output		: 15 HP (11 kW)		: 19s (cold) 11s (hot)		
Poles		: 2		Temperature rise		
Frequency		: 60 Hz		: 80 K		
Rated voltage		: 575 V		Duty cycle		
Rated current		: 13.6 A		: Cont.(S1)		
L. R. Amperes		: 112 A		Ambient temperature		
LRC		: 8.2x(Code J)		: -20°C to +40°C		
No load current		: 4.98 A		Altitude		
Rated speed		: 3520 rpm		: 1000 m.a.s.l.		
Slip		: 2.22 %		Protection degree		
Rated torque		: 22.4 ft.lb		: IP55		
Locked rotor torque		: 280 %		Cooling method		
Breakdown torque		: 330 %		: IC411 - TEFC		
Insulation class		: F		Mounting		
Service factor		: 1.15		: F-1		
Moment of inertia (J)		: 0.6341 sq.ft.lb		Rotation ¹		
Design		: A		: Both (CW and CCW)		
Noise level ²		: 70.0 dB(A)		Starting method		
Approx. weight ³		: 154 lb		: Direct On Line		
Output		25% 50% 75% 100%		Foundation loads		
Efficiency (%)		90.0 90.2 91.0 91.0		Max. traction		
Power Factor		0.49 0.76 0.85 0.89		: 339 lb		
				Max. compression		
				: 493 lb		
Bearing type		: <u>Drive end</u> 6209 ZZ		: <u>Non drive end</u> 6206 ZZ		
Sealing		: V'Ring		: V'Ring		
Lubrication interval		: -		: -		
Lubricant amount		: -		: -		
Lubricant type		: Mobil Polyrex EM				
Notes						
This revision replaces and cancel the previous one, which must be eliminated.						
(1) Looking the motor from the shaft end.						
(2) Measured at 1m and with tolerance of +3dB(A).						
(3) Approximate weight subject to changes after manufacturing process.						
(4) At 100% of full load.						
These are average values based on tests with sinusoidal power supply, subject to the tolerances stipulated in NEMA MG-1.						
Rev.	Changes Summary			Performed	Checked	Date
Performed by						
Checked by						
Date	13/04/2022			Page	Revision	
				1 / 6		

TORQUE AND CURRENT VS SPEED CURVE

Three Phase Induction Motor - Squirrel Cage



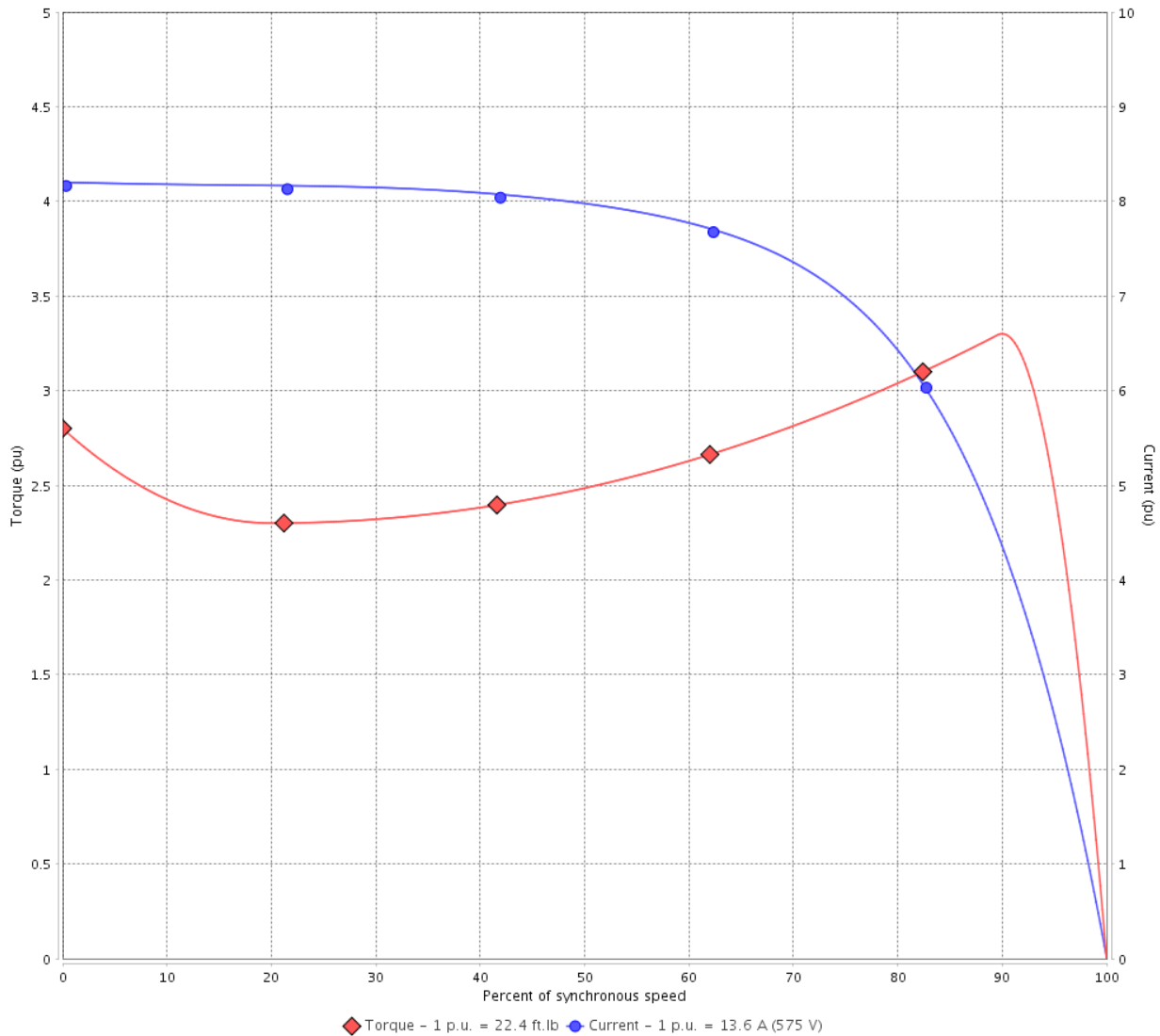
Customer :

Product line : JM Pump NEMA Premium Efficiency Three-Phase

Product code : 14478850

Catalog # : 01536ET3H215JM-SG

TORQUE AND CURRENT VS SPEED CURVE



Performance : 575 V 60 Hz 2P

Rated current	: 13.6 A	Moment of inertia (J)	: 0.6341 sq.ft.lb
LRC	: 8.2	Duty cycle	: Cont.(S1)
Rated torque	: 22.4 ft.lb	Insulation class	: F
Locked rotor torque	: 280 %	Service factor	: 1.15
Breakdown torque	: 330 %	Temperature rise	: 80 K
Rated speed	: 3520 rpm	Design	: A

Locked rotor time : 19s (cold) 11s (hot)

Rev.	Changes Summary	Performed	Checked	Date
Performed by		Page		Revision
Checked by		2 / 6		
Date	13/04/2022			

LOAD PERFORMANCE CURVE

Three Phase Induction Motor - Squirrel Cage

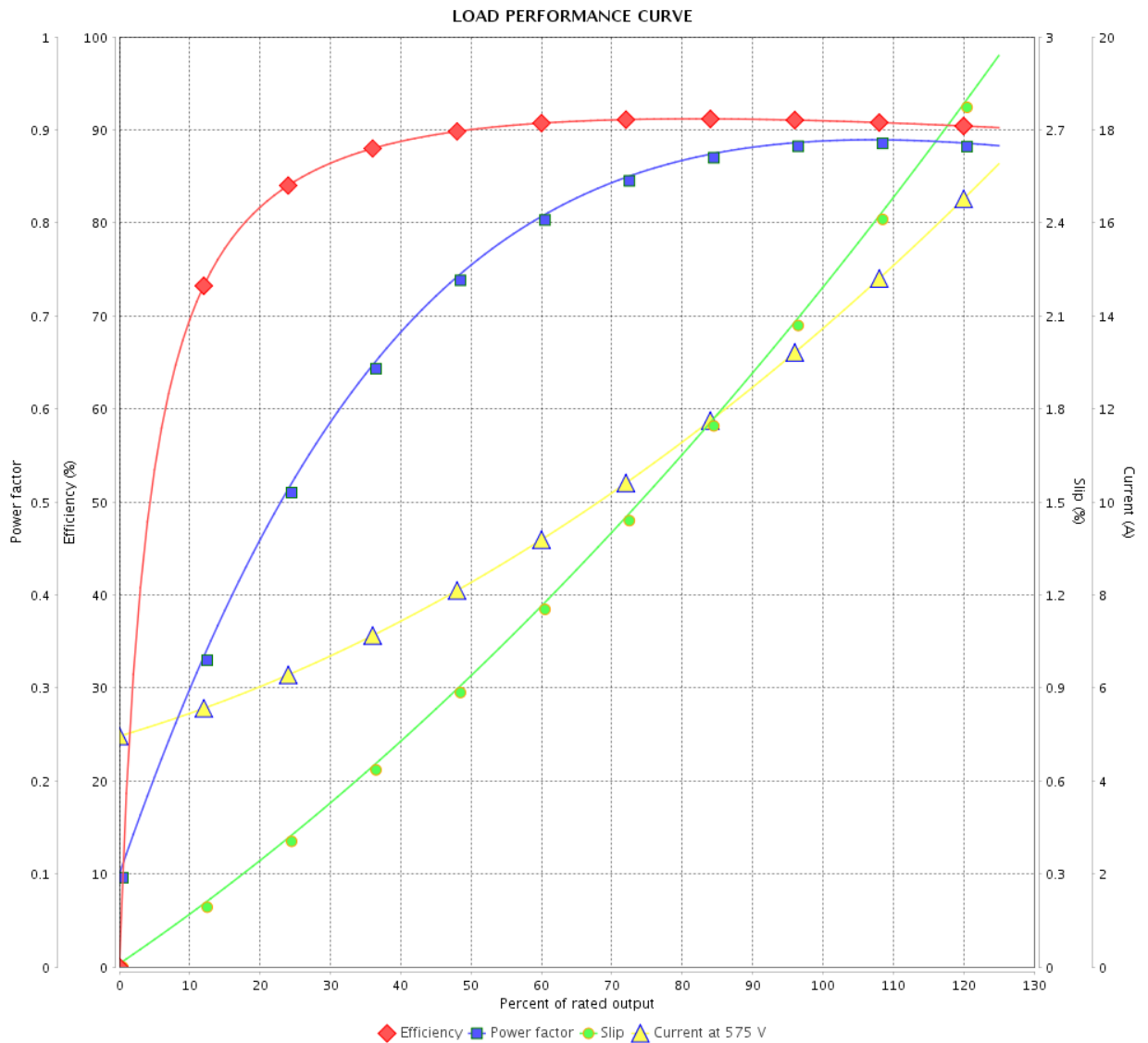


Customer : _____

Product line : JM Pump NEMA Premium
Efficiency Three-Phase

Product code : 14478850

Catalog # : 01536ET3H215JM-SG



Performance : 575 V 60 Hz 2P

Rated current : 13.6 A
LRC : 8.2
Rated torque : 22.4 ft.lb
Locked rotor torque : 280 %
Breakdown torque : 330 %
Rated speed : 3520 rpm

Moment of inertia (J) : 0.6341 sq.ft.lb
Duty cycle : Cont.(S1)
Insulation class : F
Service factor : 1.15
Temperature rise : 80 K
Design : A

Rev.	Changes Summary	Performed	Checked	Date
Performed by		Page		Revision
Checked by		3 / 6		
Date		13/04/2022		

THERMAL LIMIT CURVE



Three Phase Induction Motor - Squirrel Cage

Customer :

Product line : JM Pump NEMA Premium
Efficiency Three-Phase

Product code : 14478850

Catalog # : 01536ET3H215JM-SG

Performance : 575 V 60 Hz 2P

Rated current : 13.6 A
LRC : 8.2
Rated torque : 22.4 ft.lb
Locked rotor torque : 280 %
Breakdown torque : 330 %
Rated speed : 3520 rpm

Moment of inertia (J) : 0.6341 sq.ft.lb
Duty cycle : Cont.(S1)
Insulation class : F
Service factor : 1.15
Temperature rise : 80 K
Design : A

Heating constant

Cooling constant

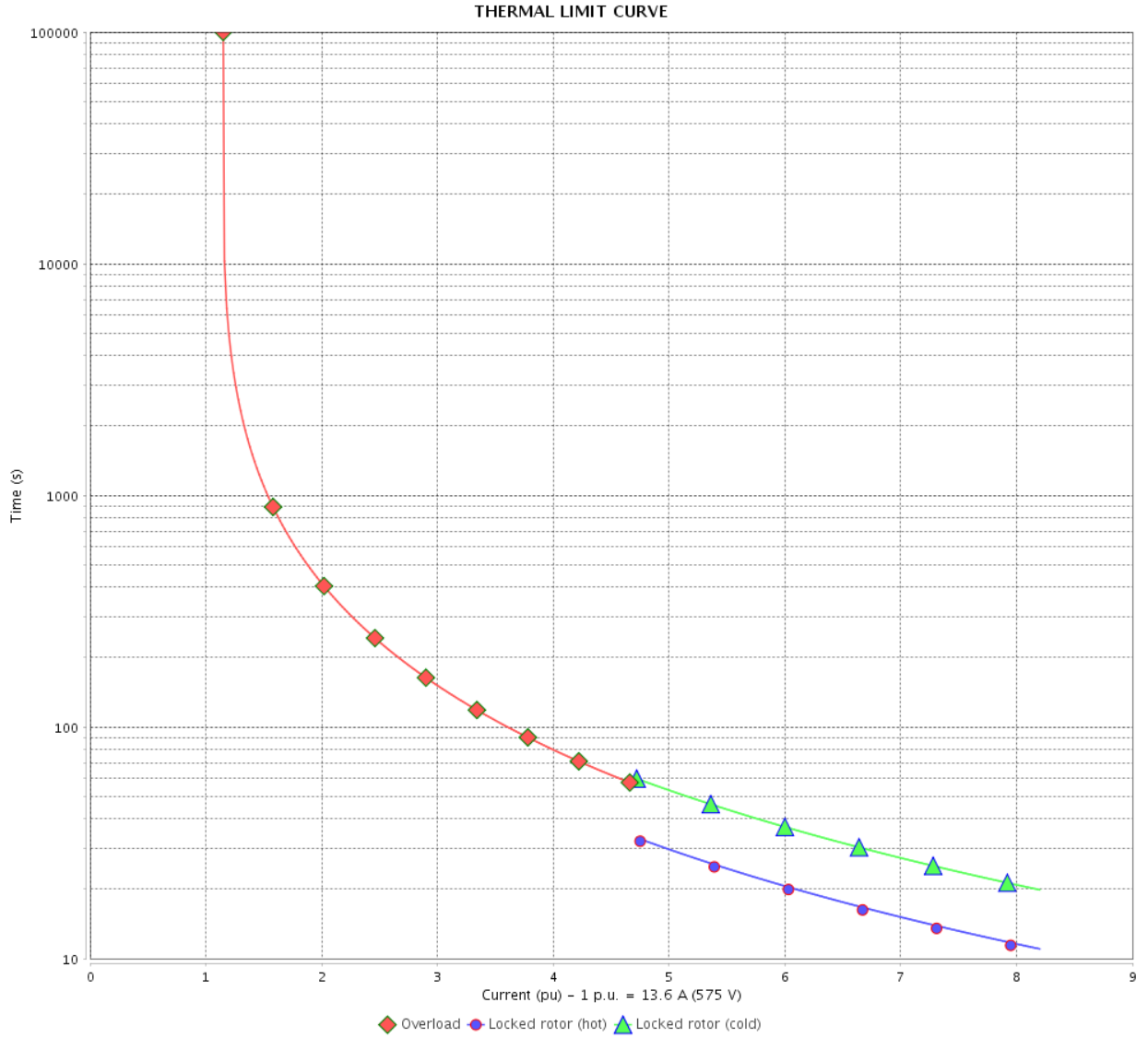
Rev.	Changes Summary	Performed	Checked	Date
Performed by				
Checked by			Page	Revision
Date	13/04/2022		4 / 6	

THERMAL LIMIT CURVE

Three Phase Induction Motor - Squirrel Cage



Customer : _____



Rev.	Changes Summary	Performed	Checked	Date
Performed by		Page 5 / 6		Revision
Checked by				
Date				

VFD OPERATION CURVE

Three Phase Induction Motor - Squirrel Cage



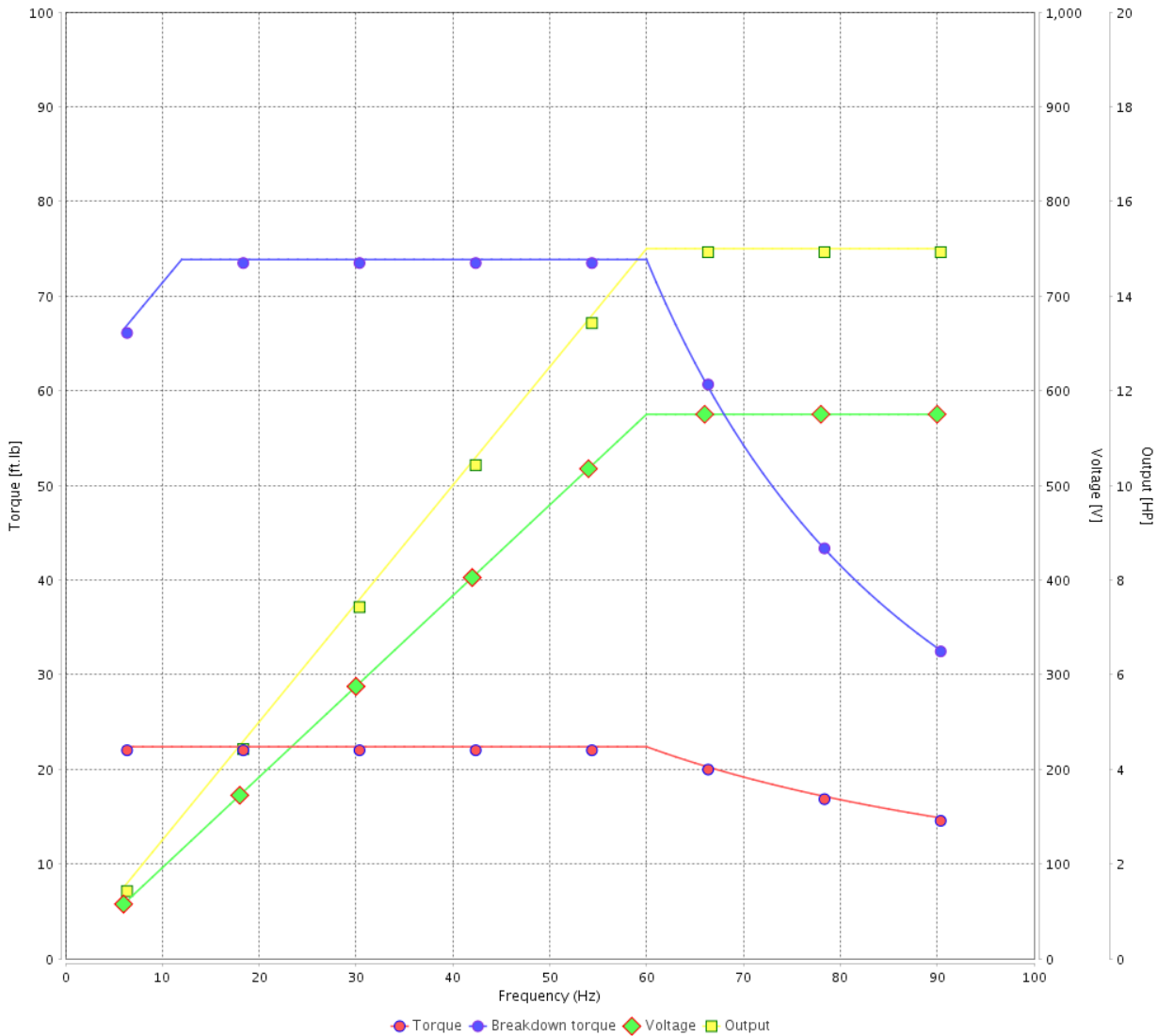
Customer :

Product line : JM Pump NEMA Premium Efficiency Three-Phase

Product code : 14478850

Catalog # : 01536ET3H215JM-SG

VFD OPERATION CURVE



Performance : 575 V 60 Hz 2P

Rated current : 13.6 A
 LRC : 8.2
 Rated torque : 22.4 ft.lb
 Locked rotor torque : 280 %
 Breakdown torque : 330 %
 Rated speed : 3520 rpm

Moment of inertia (J) : 0.6341 sq.ft.lb
 Duty cycle : Cont.(S1)
 Insulation class : F
 Service factor : 1.15
 Temperature rise : 80 K
 Design : A

Rev.	Changes Summary	Performed	Checked	Date
Performed by			Page 6 / 6	Revision
Checked by				
Date	13/04/2022			

1 2 3 4 5 6

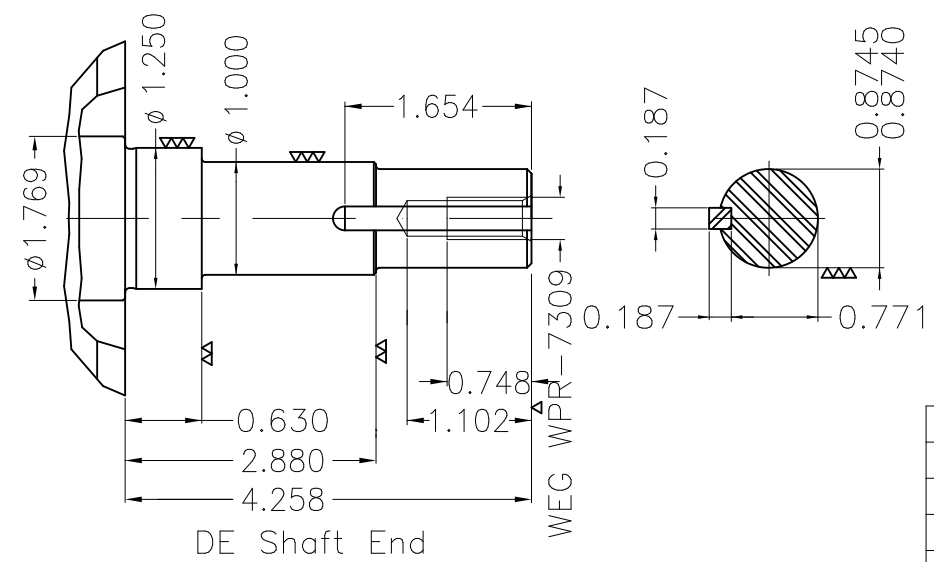
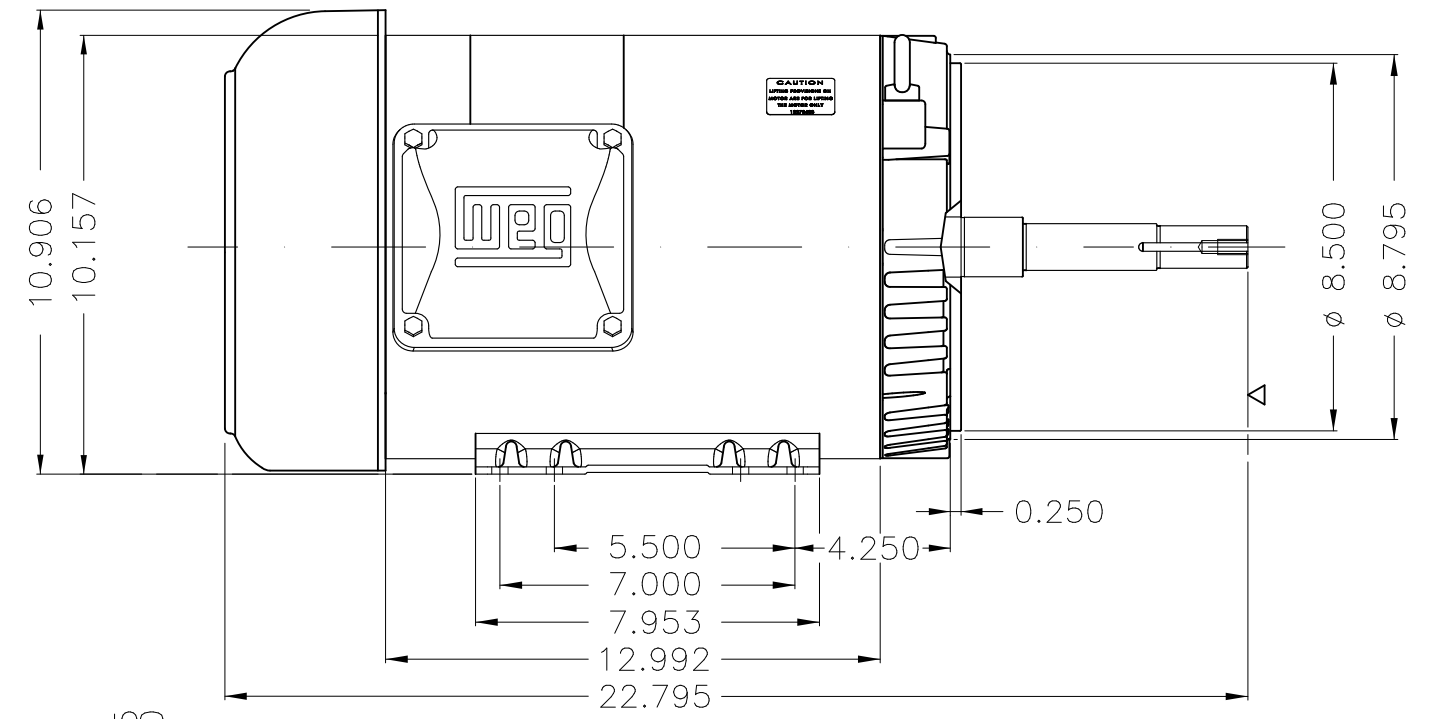
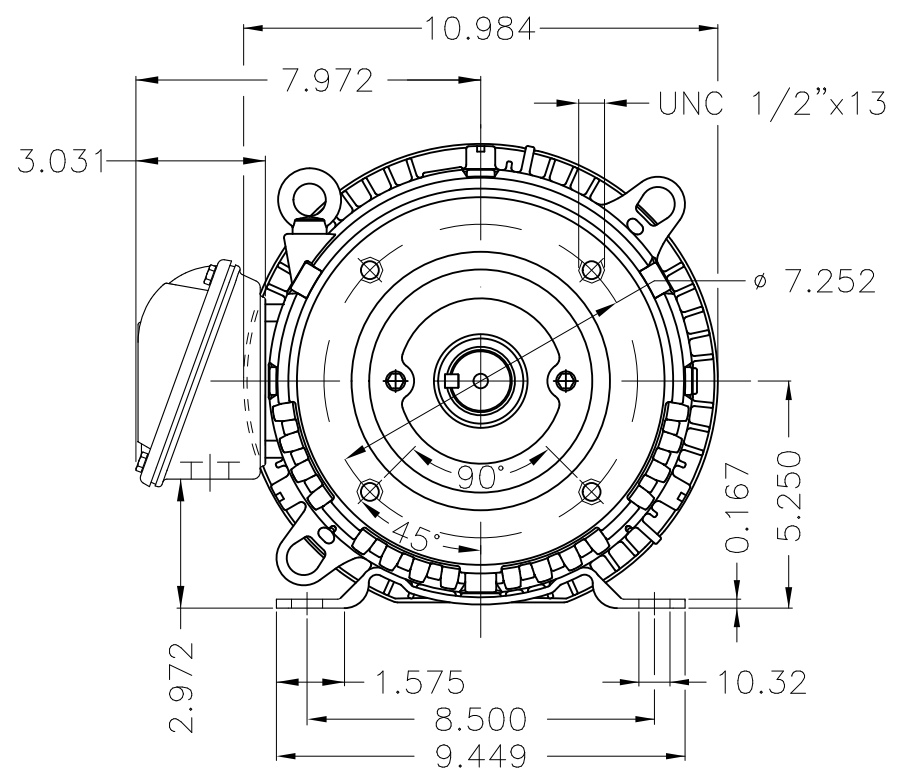
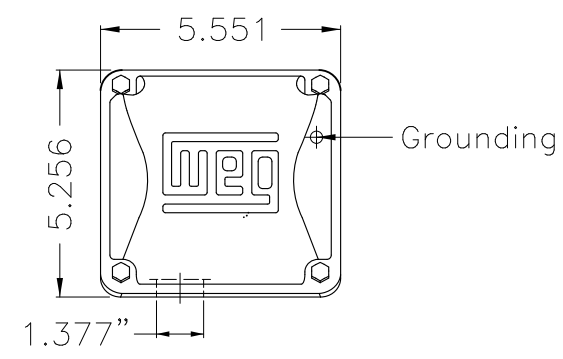
A

B

C

D

E



EUNC 3/8" - 16 WEG WPR-7309

Design A						
Internal AEGIS ground ring on the DE						
Color Munsell N 1 matte black						
Painting plan 207N						
Mounting F-1/B34R(D)						

ECM	LOC	SUMMARY OF MODIFICATIONS			EXECUTED	CHECKED	RELEASED	DATE	VER
EXECUTED	PIRWBUSER		THREE PH. MOTOR ROLLED STEEL CLOSE COUPLED PUMP JN TYPE PSEF 575						
CHECKED			FRAME 213/5JM IP55 TEFC						
RELEASED									
REL DT.		WMO	Jaragua do Sul	Product Engineering	SHEET	1 / 1			

15 HP 02 Poles 60 Hz

Dimensions in inches XME A3