

DATA SHEET



Three Phase Induction Motor - Squirrel Cage

Customer :

Product line : NEMA Premium Efficiency Three-Phase
 Product code : 14331206
 Catalog # : 01536ET3H254T-SG

Frame	: 254/6T	Locked rotor time	: 25s (cold) 14s (hot)
Output	: 15 HP (11 kW)	Temperature rise	: 80 K
Poles	: 2	Duty cycle	: Cont.(S1)
Frequency	: 60 Hz	Ambient temperature	: -20°C to +40°C
Rated voltage	: 575 V	Altitude	: 1000 m.a.s.l.
Rated current	: 13.9 A	Protection degree	: IP55
L. R. Amperes	: 94.7 A	Cooling method	: IC411 - TEFC
LRC	: 6.8x(Code G)	Mounting	: F-1
No load current	: 5.20 A	Rotation ¹	: Both (CW and CCW)
Rated speed	: 3525 rpm	Noise level ²	: 75.0 dB(A)
Slip	: 2.08 %	Starting method	: Direct On Line
Rated torque	: 22.3 ft.lb	Approx. weight ³	: 175 lb
Locked rotor torque	: 200 %		
Breakdown torque	: 300 %		
Insulation class	: F		
Service factor	: 1.15		
Moment of inertia (J)	: 0.8718 sq.ft.lb		
Design	: B		

Output	25%	50%	75%	100%	Foundation loads	
Efficiency (%)	89.2	89.5	91.0	91.0	Max. traction	: 234 lb
Power Factor	0.47	0.73	0.83	0.87	Max. compression	: 409 lb

	Drive end	Non drive end
Bearing type	: 6309 Z C3	: 6208 Z C3
Sealing	: V'Ring	: Without Bearing Seal
Lubrication interval	: 15797 h	: 20000 h
Lubricant amount	: 13 g	: 8 g
Lubricant type	: Mobil Polyrex EM	

Notes

This revision replaces and cancel the previous one, which must be eliminated.

- (1) Looking the motor from the shaft end.
- (2) Measured at 1m and with tolerance of +3dB(A).
- (3) Approximate weight subject to changes after manufacturing process.
- (4) At 100% of full load.

These are average values based on tests with sinusoidal power supply, subject to the tolerances stipulated in NEMA MG-1.

Rev.	Changes Summary	Performed	Checked	Date
Performed by				
Checked by			Page	Revision
Date	13/04/2022		1 / 6	

TORQUE AND CURRENT VS SPEED CURVE

Three Phase Induction Motor - Squirrel Cage



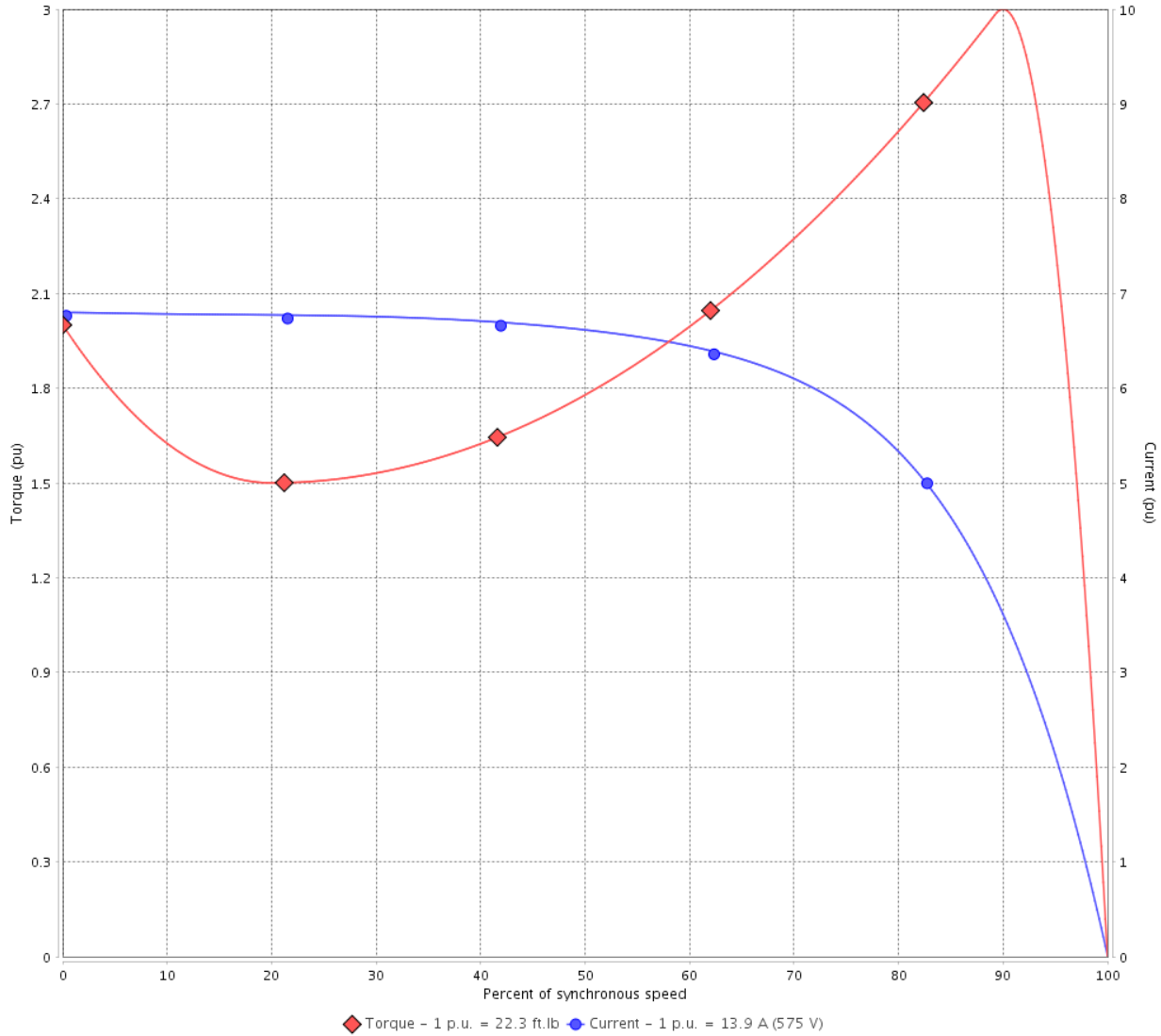
Customer :

Product line : NEMA Premium Efficiency Three-Phase

Product code : 14331206

Catalog # : 01536ET3H254T-SG

TORQUE AND CURRENT VS SPEED CURVE



Performance : 575 V 60 Hz 2P

Rated current	: 13.9 A	Moment of inertia (J)	: 0.8718 sq.ft.lb
LRC	: 6.8	Duty cycle	: Cont.(S1)
Rated torque	: 22.3 ft.lb	Insulation class	: F
Locked rotor torque	: 200 %	Service factor	: 1.15
Breakdown torque	: 300 %	Temperature rise	: 80 K
Rated speed	: 3525 rpm	Design	: B

Locked rotor time : 25s (cold) 14s (hot)

Rev.	Changes Summary	Performed	Checked	Date
Performed by			Page 2 / 6	Revision
Checked by				
Date	13/04/2022			

LOAD PERFORMANCE CURVE

Three Phase Induction Motor - Squirrel Cage

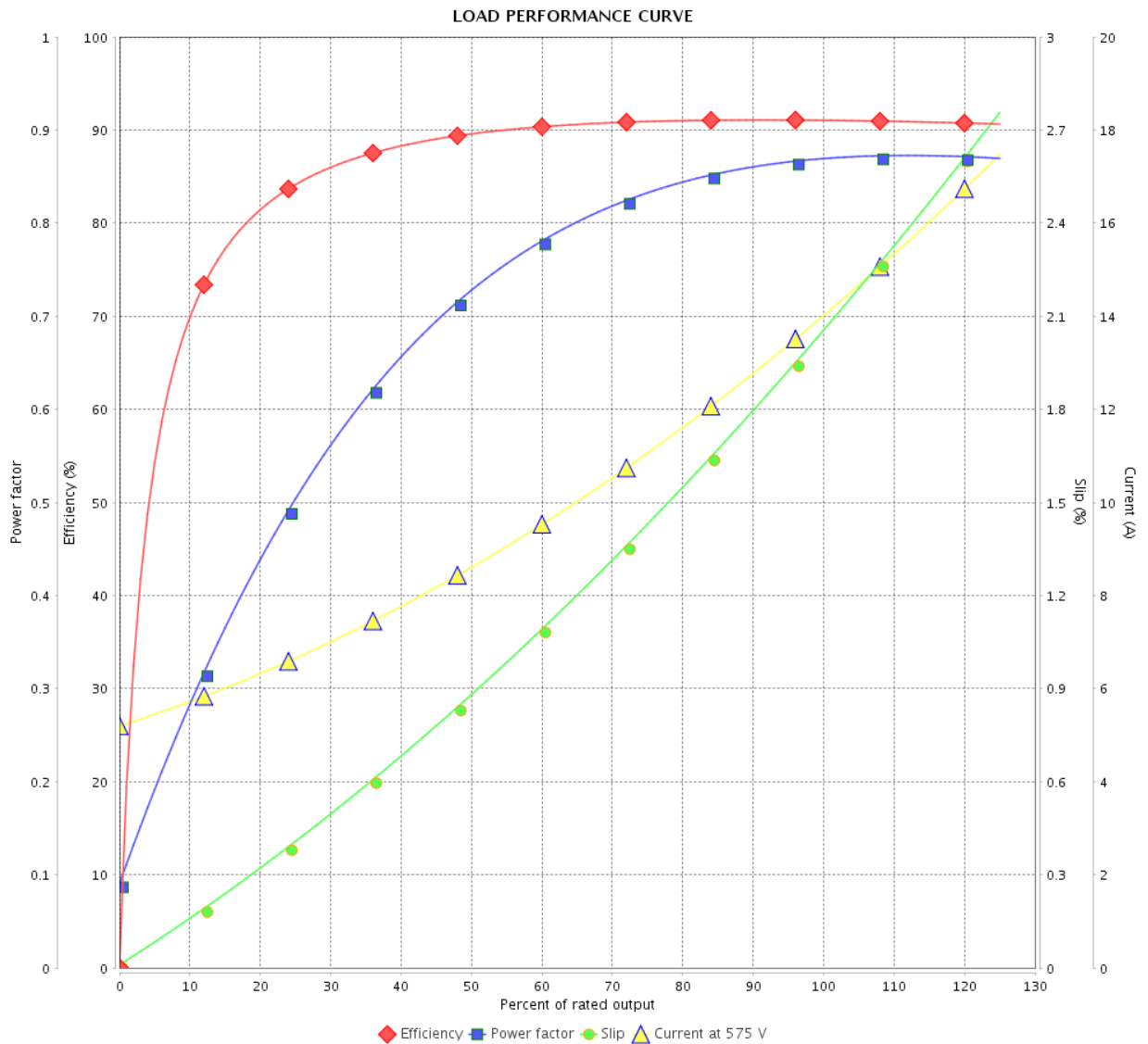


Customer : _____

Product line : NEMA Premium Efficiency Three-Phase

Product code : 14331206

Catalog # : 01536ET3H254T-SG



Performance : 575 V 60 Hz 2P

Rated current : 13.9 A
 LRC : 6.8
 Rated torque : 22.3 ft.lb
 Locked rotor torque : 200 %
 Breakdown torque : 300 %
 Rated speed : 3525 rpm

Moment of inertia (J) : 0.8718 sq.ft.lb
 Duty cycle : Cont.(S1)
 Insulation class : F
 Service factor : 1.15
 Temperature rise : 80 K
 Design : B

Rev.	Changes Summary	Performed	Checked	Date
Performed by		Page		Revision
Checked by		3 / 6		
Date		13/04/2022		

THERMAL LIMIT CURVE

Three Phase Induction Motor - Squirrel Cage



Customer :

Product line : NEMA Premium Efficiency Three-Phase
Product code : 14331206
Catalog # : 01536ET3H254T-SG

Performance : 575 V 60 Hz 2P

Rated current	: 13.9 A	Moment of inertia (J)	: 0.8718 sq.ft.lb
LRC	: 6.8	Duty cycle	: Cont.(S1)
Rated torque	: 22.3 ft.lb	Insulation class	: F
Locked rotor torque	: 200 %	Service factor	: 1.15
Breakdown torque	: 300 %	Temperature rise	: 80 K
Rated speed	: 3525 rpm	Design	: B

Heating constant

Cooling constant

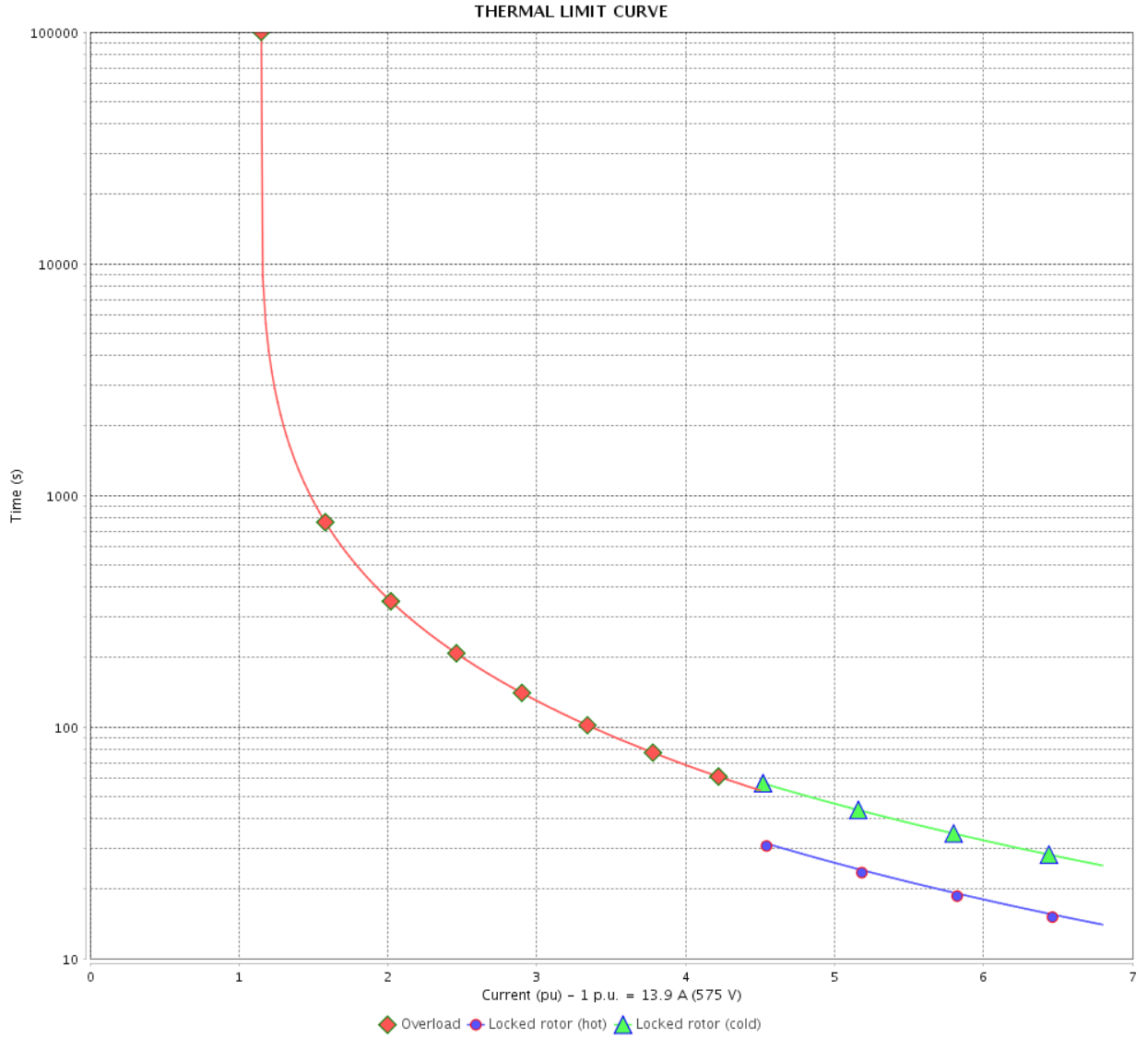
Rev.	Changes Summary	Performed	Checked	Date
Performed by				
Checked by			Page	Revision
Date	13/04/2022		4 / 6	

THERMAL LIMIT CURVE

Three Phase Induction Motor - Squirrel Cage



Customer : _____



Rev.	Changes Summary	Performed	Checked	Date
Performed by		Page 5 / 6		Revision
Checked by				
Date				

VFD OPERATION CURVE

Three Phase Induction Motor - Squirrel Cage



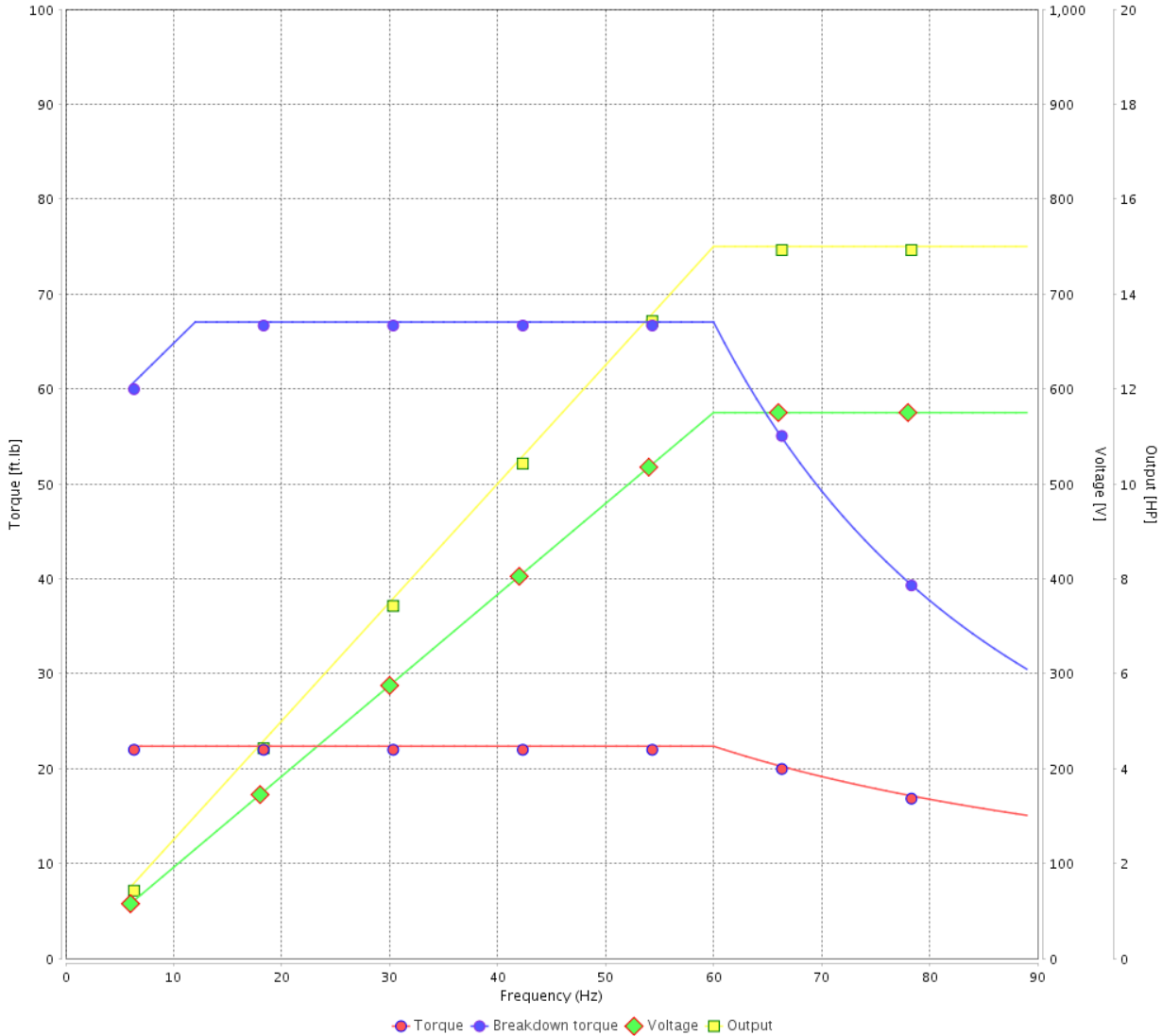
Customer :

Product line : NEMA Premium Efficiency Three-Phase

Product code : 14331206

Catalog # : 01536ET3H254T-SG

VFD OPERATION CURVE



Performance : 575 V 60 Hz 2P

Rated current : 13.9 A
 LRC : 6.8
 Rated torque : 22.3 ft.lb
 Locked rotor torque : 200 %
 Breakdown torque : 300 %
 Rated speed : 3525 rpm

Moment of inertia (J) : 0.8718 sq.ft.lb
 Duty cycle : Cont.(S1)
 Insulation class : F
 Service factor : 1.15
 Temperature rise : 80 K
 Design : B

Rev.	Changes Summary	Performed	Checked	Date
Performed by			Page 6 / 6	Revision
Checked by				
Date	13/04/2022			

1 2 3 4 5 6

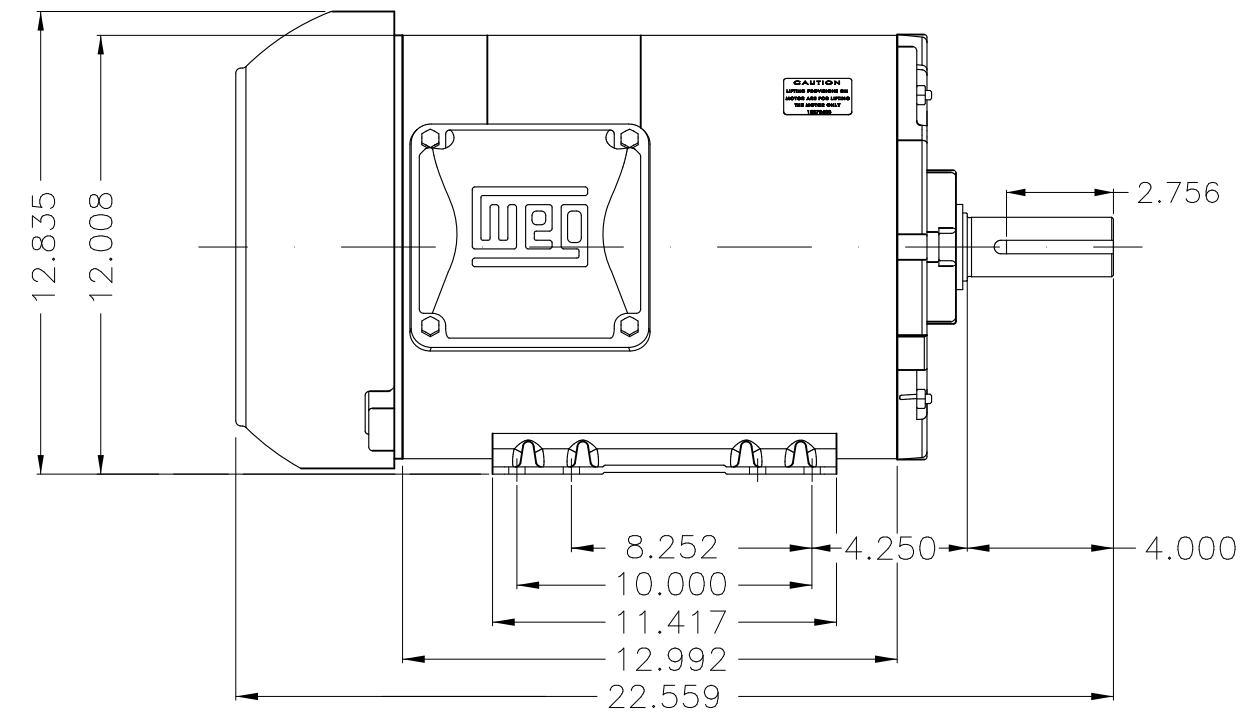
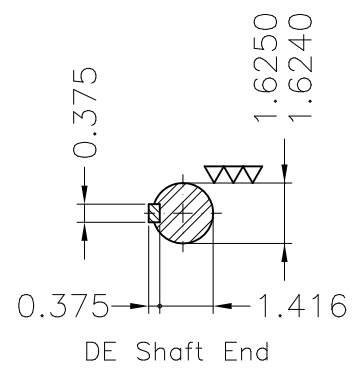
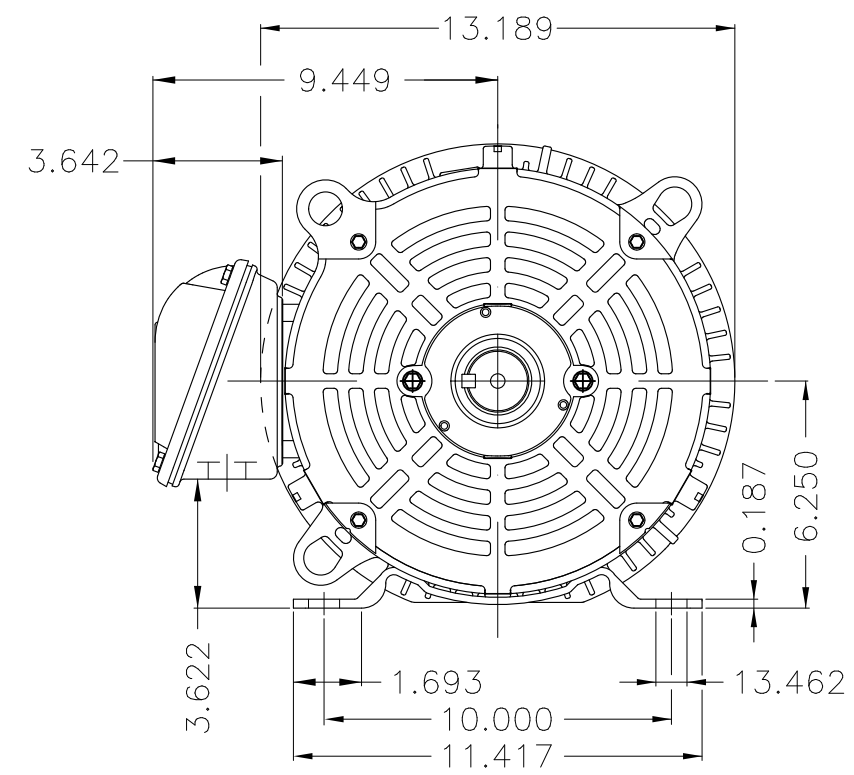
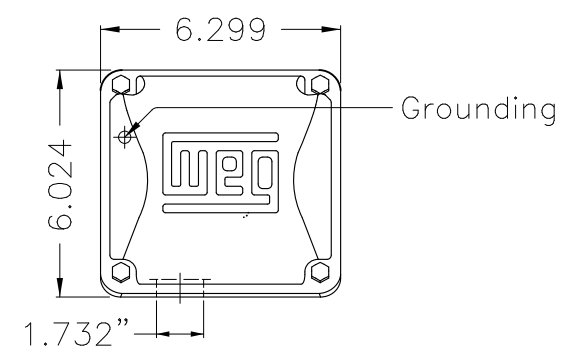
A

B

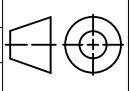
C

D

E



- Bearing cap
- Internal AEGIS ground ring on the DE
- Color Munsell N 1 matte black
- Painting plan 207N
- Mounting F-1/B3R(D)

ECM	LOC	SUMMARY OF MODIFICATIONS	EXECUTED	CHECKED	RELEASED	DATE	VER
EXECUTED	PIRWBUSER	 THREE PH. MOTOR ROLLED STEEL PREM. EFF. FRAME 254/6T IP55 TEFC					
CHECKED							
RELEASED							
REL DT.	WMO	Jaragua do Sul	Product Engineering	SHEET 1 / 1			

15 HP 02 Poles 60 Hz

A

PREVIEW

WDD



Dimensions in inches XME A3