

DATA SHEET



Three Phase Induction Motor - Squirrel Cage

Customer :											
Product line : JP Pump NEMA Premium Efficiency Three-Phase		Product code : 14327824		Catalog # : 01536OT3H215JP-SG							
Frame : 213/5JP	Output : 15 HP (11 kW)	Poles : 2	Frequency : 60 Hz	Rated voltage : 575 V	Rated current : 13.8 A						
L. R. Amperes : 93.6 A	LRC : 6.8x(Code G)	No load current : 4.93 A	Rated speed : 3535 rpm	Slip : 1.81 %	Rated torque : 22.3 ft.lb						
Locked rotor torque : 210 %	Breakdown torque : 280 %	Insulation class : F	Service factor : 1.15	Moment of inertia (J) : 0.5512 sq.ft.lb	Design : B						
Locked rotor time : 14s (cold) 8s (hot)		Temperature rise : 80 K		Duty cycle : Cont.(S1)							
Ambient temperature : -20°C to +40°C		Altitude : 1000 m.a.s.l.		Cooling method : IC01 - ODP							
Mounting : F-1		Rotation ¹ : Both (CW and CCW)		Noise level ² : 66.0 dB(A)							
Starting method : Direct On Line		Approx. weight ³ : 131 lb									
Output	25%	50%	75%	100%	Foundation loads						
Efficiency (%)	90.1	90.2	90.2	90.2	Max. traction : 286 lb						
Power Factor	0.50	0.77	0.86	0.89	Max. compression : 417 lb						
Bearing type :		<table border="0"> <tr> <td style="text-align: center;"><u>Drive end</u></td> <td style="text-align: center;"><u>Non drive end</u></td> </tr> <tr> <td style="text-align: center;">6209 ZZ</td> <td style="text-align: center;">6206 ZZ</td> </tr> </table>		<u>Drive end</u>	<u>Non drive end</u>	6209 ZZ	6206 ZZ	Sealing :		Without Bearing Seal	
<u>Drive end</u>	<u>Non drive end</u>										
6209 ZZ	6206 ZZ										
Lubrication interval :		-		-							
Lubricant amount :		-		-							
Lubricant type :		Mobil Polyrex EM									
Notes											
This revision replaces and cancel the previous one, which must be eliminated. (1) Looking the motor from the shaft end. (2) Measured at 1m and with tolerance of +3dB(A). (3) Approximate weight subject to changes after manufacturing process. (4) At 100% of full load.			These are average values based on tests with sinusoidal power supply, subject to the tolerances stipulated in NEMA MG-1.								
Rev.	Changes Summary			Performed	Checked	Date					
Performed by											
Checked by					Page	Revision					
Date	13/04/2022				1 / 6						

TORQUE AND CURRENT VS SPEED CURVE

Three Phase Induction Motor - Squirrel Cage



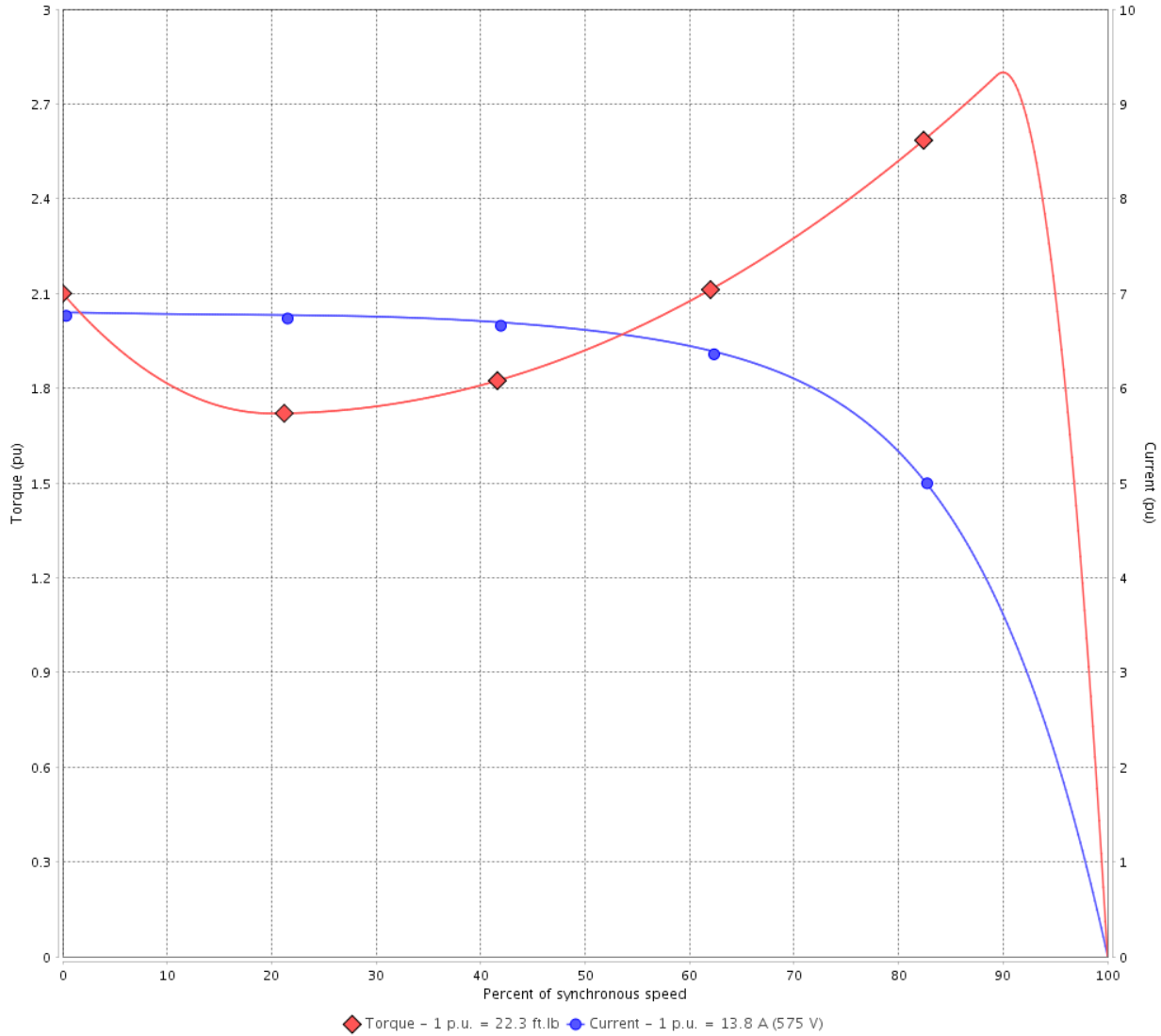
Customer :

Product line : JP Pump NEMA Premium
Efficiency Three-Phase

Product code : 14327824

Catalog # : 01536OT3H215JP-SG

TORQUE AND CURRENT VS SPEED CURVE



Performance : 575 V 60 Hz 2P

Rated current	: 13.8 A	Moment of inertia (J)	: 0.5512 sq.ft.lb
LRC	: 6.8	Duty cycle	: Cont.(S1)
Rated torque	: 22.3 ft.lb	Insulation class	: F
Locked rotor torque	: 210 %	Service factor	: 1.15
Breakdown torque	: 280 %	Temperature rise	: 80 K
Rated speed	: 3535 rpm	Design	: B

Locked rotor time : 14s (cold) 8s (hot)

Rev.	Changes Summary	Performed	Checked	Date
Performed by			Page 2 / 6	Revision
Checked by				
Date	13/04/2022			

LOAD PERFORMANCE CURVE

Three Phase Induction Motor - Squirrel Cage

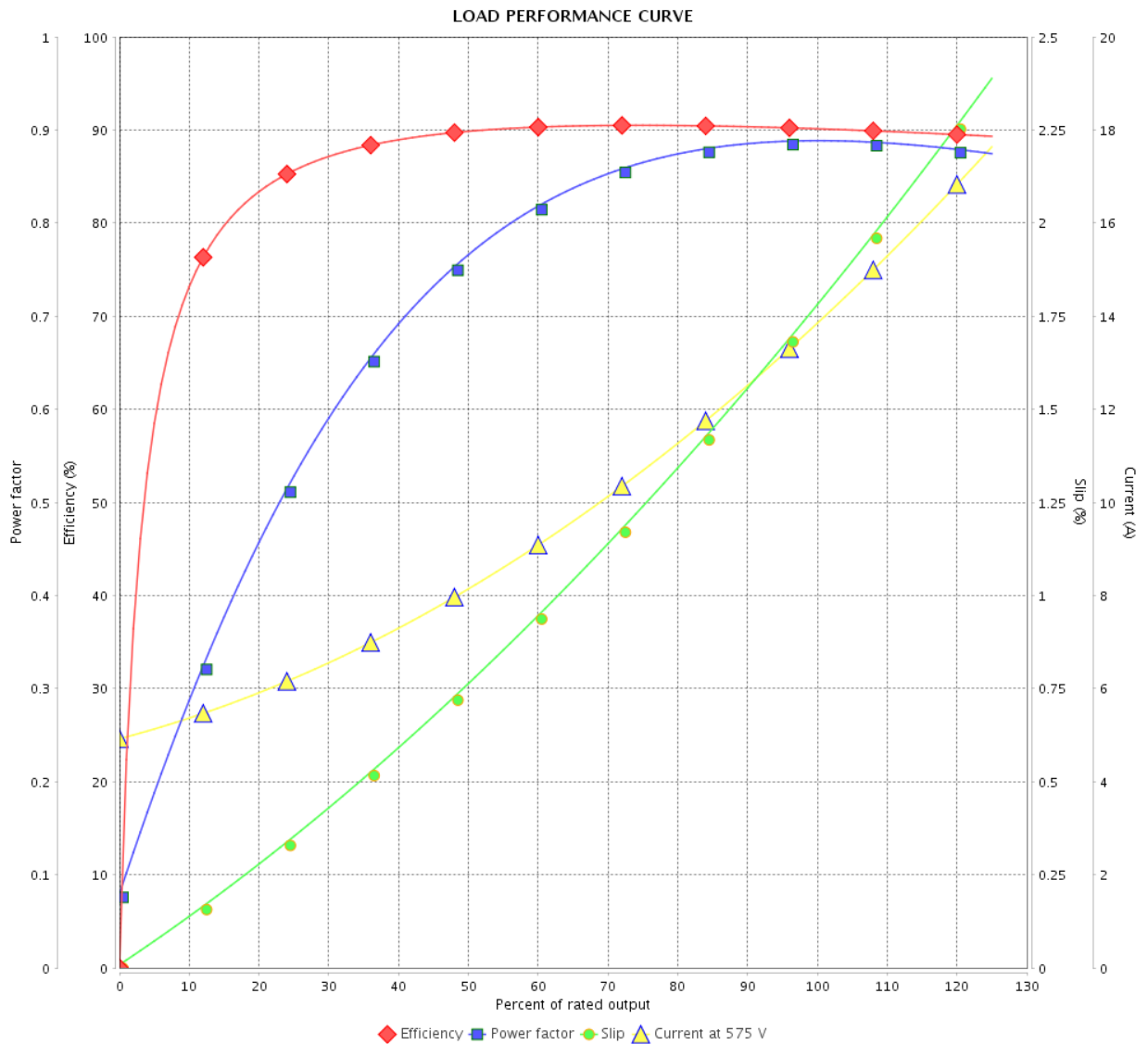


Customer :

Product line : JP Pump NEMA Premium
Efficiency Three-Phase

Product code : 14327824

Catalog # : 01536OT3H215JP-SG



Performance : 575 V 60 Hz 2P

Rated current : 13.8 A
 LRC : 6.8
 Rated torque : 22.3 ft.lb
 Locked rotor torque : 210 %
 Breakdown torque : 280 %
 Rated speed : 3535 rpm

Moment of inertia (J) : 0.5512 sq.ft.lb
 Duty cycle : Cont.(S1)
 Insulation class : F
 Service factor : 1.15
 Temperature rise : 80 K
 Design : B

Rev.	Changes Summary	Performed	Checked	Date
Performed by			Page	Revision
Checked by				
Date				
			3 / 6	

THERMAL LIMIT CURVE

Three Phase Induction Motor - Squirrel Cage



Customer :

Product line : JP Pump NEMA Premium
Efficiency Three-Phase

Product code : 14327824

Catalog # : 01536OT3H215JP-SG

Performance : 575 V 60 Hz 2P

Rated current : 13.8 A
LRC : 6.8
Rated torque : 22.3 ft.lb
Locked rotor torque : 210 %
Breakdown torque : 280 %
Rated speed : 3535 rpm

Moment of inertia (J) : 0.5512 sq.ft.lb
Duty cycle : Cont.(S1)
Insulation class : F
Service factor : 1.15
Temperature rise : 80 K
Design : B

Heating constant

Cooling constant

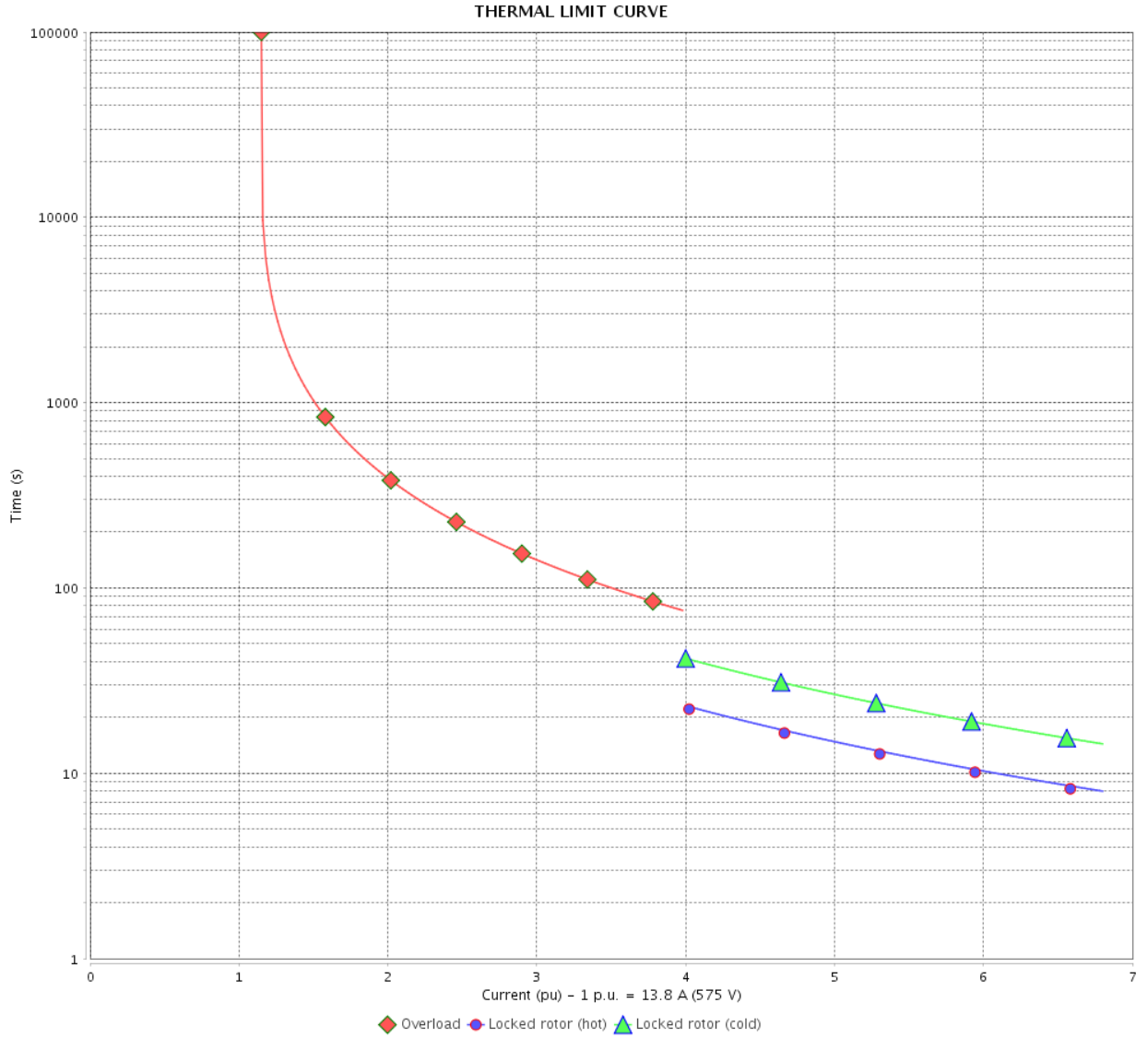
Rev.	Changes Summary	Performed	Checked	Date
Performed by				
Checked by			Page	Revision
Date	13/04/2022		4 / 6	

THERMAL LIMIT CURVE

Three Phase Induction Motor - Squirrel Cage



Customer : _____



Rev.	Changes Summary	Performed	Checked	Date
Performed by				
Checked by				
Date				
			Page	Revision
			5 / 6	

VFD OPERATION CURVE

Three Phase Induction Motor - Squirrel Cage



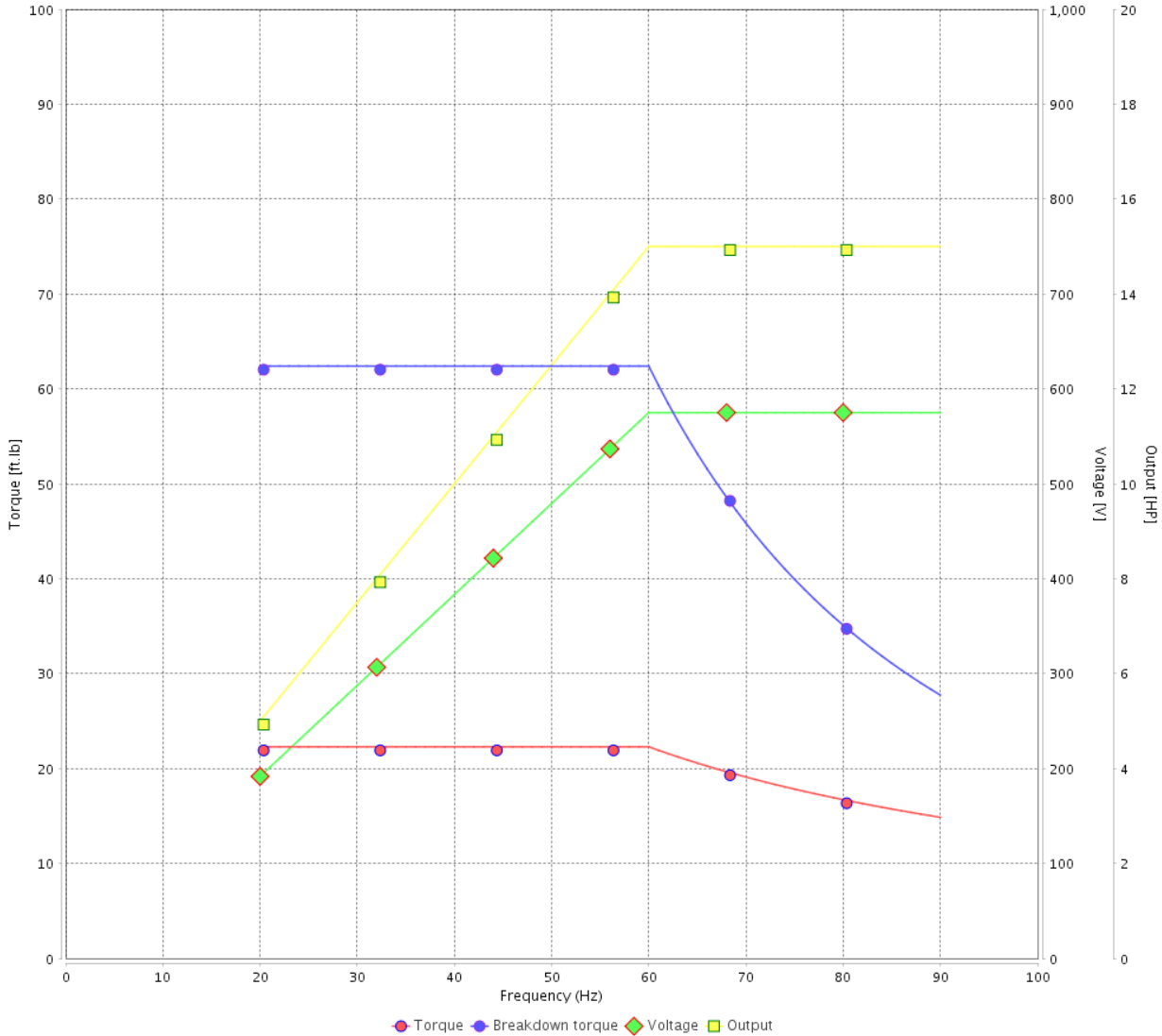
Customer :

Product line : JP Pump NEMA Premium Efficiency Three-Phase

Product code : 14327824

Catalog # : 01536OT3H215JP-SG

VFD OPERATION CURVE



Performance : 575 V 60 Hz 2P

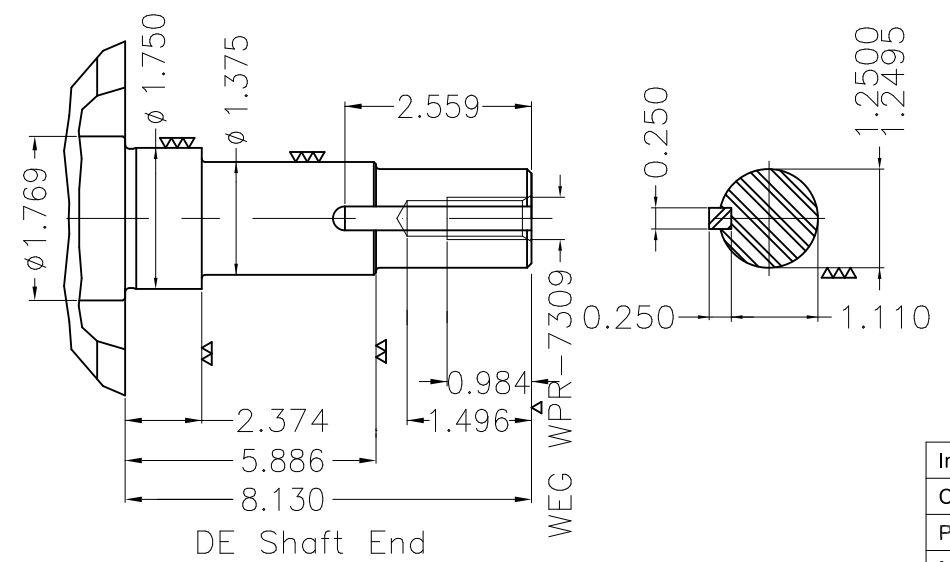
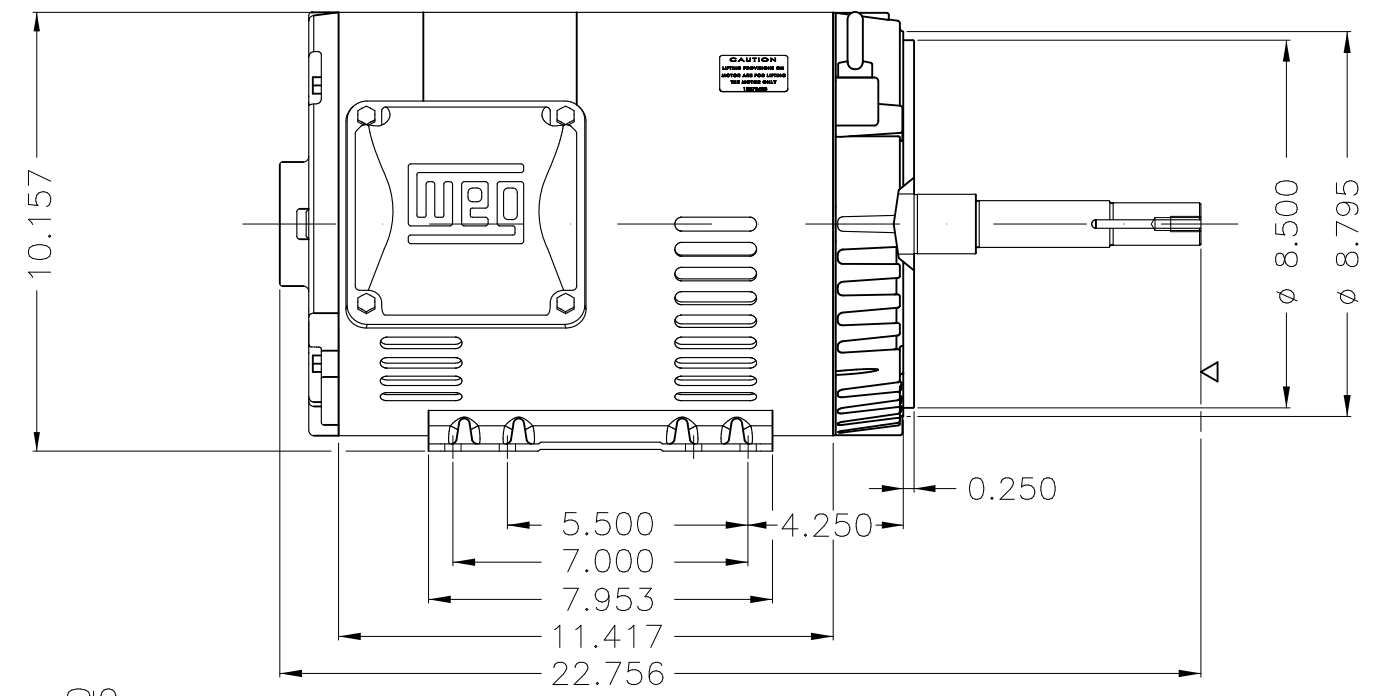
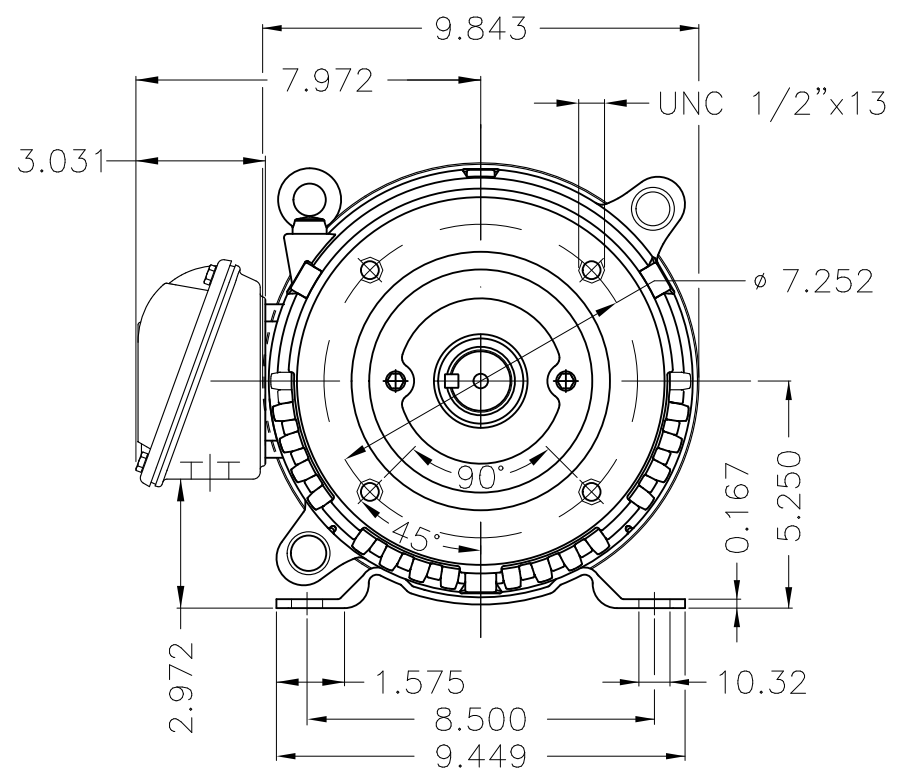
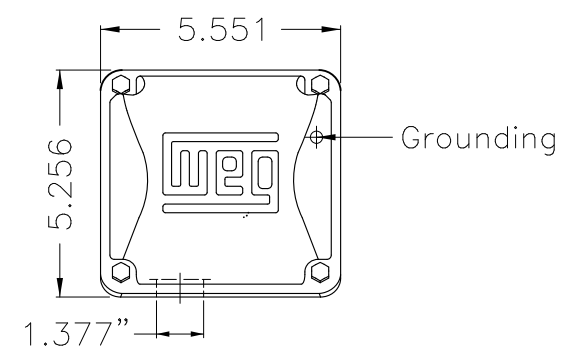
Rated current : 13.8 A
 LRC : 6.8
 Rated torque : 22.3 ft.lb
 Locked rotor torque : 210 %
 Breakdown torque : 280 %
 Rated speed : 3535 rpm

Moment of inertia (J) : 0.5512 sq.ft.lb
 Duty cycle : Cont.(S1)
 Insulation class : F
 Service factor : 1.15
 Temperature rise : 80 K
 Design : B

Rev.	Changes Summary	Performed	Checked	Date
Performed by			Page 6 / 6	Revision
Checked by				
Date	13/04/2022			

1 2 3 4 5 6

A
B
C
D
E



EUNC 1/2"-13 WEG WPR-7309

DE Shaft End

Internal AEGIS ground ring on the DE
 Color Munsell N 1 matte black
 Painting plan 207N
 Mounting F-1/B34R(D)

ECM	LOC	SUMMARY OF MODIFICATIONS	EXECUTED	CHECKED	RELEASED	DATE	VER
EXECUTED	PIRWBUSER	THREE PH. MOTOR ROLLED STEEL CLOSE COUPLED PUMP JP 5/5 DE PREM LTA					
CHECKED		FRAME 213/5JP IP21 ODP					
RELEASED							
REL DT.	WMO	Jaragua do Sul	Product Engineering	WDD	SHEET	1 / 1	

15 HP 02 Poles 60 Hz

