

TORQUE AND CURRENT VS SPEED CURVE

Three Phase Induction Motor - Squirrel Cage



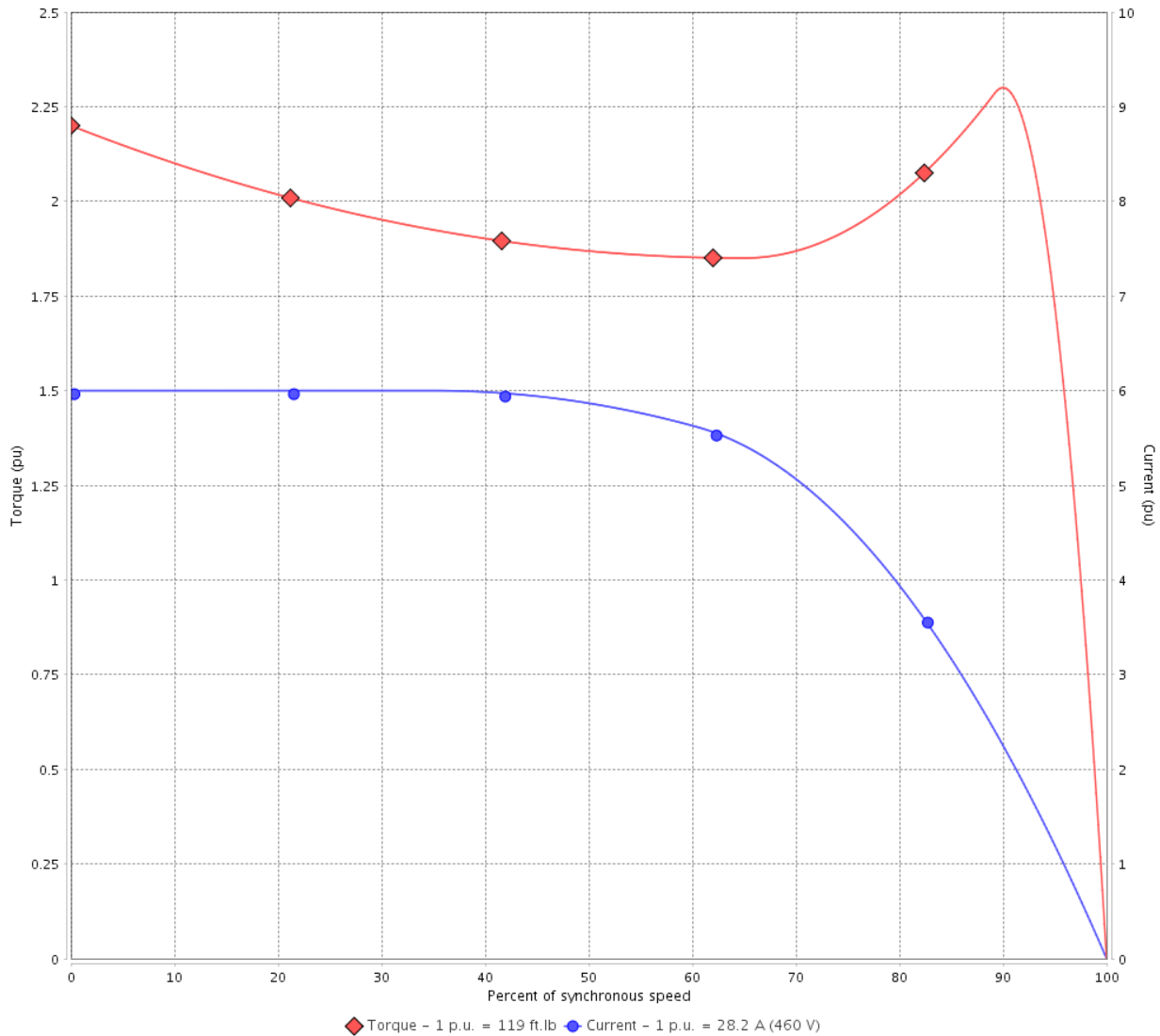
Customer :

Product line : NEMA Premium Efficiency Three-Phase

Product code : 13506377

Catalog # : 02009ET3E286T-W22

TORQUE AND CURRENT VS SPEED CURVE



Performance : 208-230/460 V 60 Hz 8P

Rated current	: 62.4-56.4/28.2 A	Moment of inertia (J)	
LRC	: 6.0	Duty cycle	: Cont.(S1)
Rated torque	: 119 ft.lb	Insulation class	: F
Locked rotor torque	: 220 %	Service factor	: 1.00
Breakdown torque	: 229 %	Temperature rise	: 80 K
Rated speed	: 880 rpm	Design	: A

Locked rotor time : 36s (cold) 20s (hot)

Rev.	Changes Summary	Performed	Checked	Date
Performed by			Page 2 / 6	Revision
Checked by				
Date	14/04/2022			

LOAD PERFORMANCE CURVE

Three Phase Induction Motor - Squirrel Cage

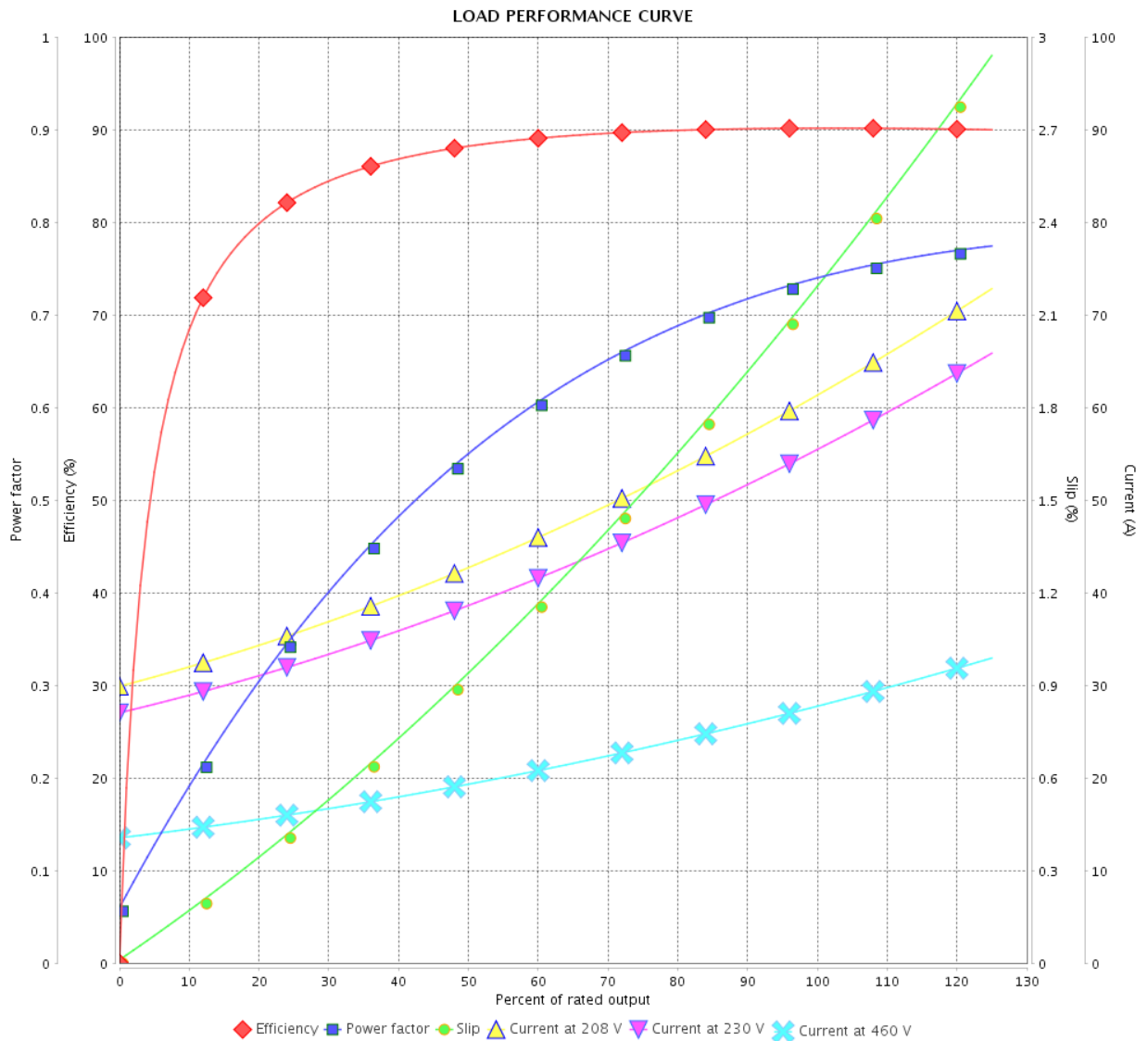


Customer : _____

Product line : NEMA Premium Efficiency Three-Phase

Product code : 13506377

Catalog # : 02009ET3E286T-W22



Performance : 208-230/460 V 60 Hz 8P

Rated current : 62.4-56.4/28.2 A
 LRC : 6.0
 Rated torque : 119 ft.lb
 Locked rotor torque : 220 %
 Breakdown torque : 229 %
 Rated speed : 880 rpm

Moment of inertia (J)
 Duty cycle : Cont.(S1)
 Insulation class : F
 Service factor : 1.00
 Temperature rise : 80 K
 Design : A

Rev.	Changes Summary	Performed	Checked	Date
Performed by			Page	Revision
Checked by				
Date				

THERMAL LIMIT CURVE



Three Phase Induction Motor - Squirrel Cage

Customer :

Product line : NEMA Premium Efficiency Three-Phase
Product code : 13506377
Catalog # : 02009ET3E286T-W22

Performance : 208-230/460 V 60 Hz 8P

Rated current	: 62.4-56.4/28.2 A	Moment of inertia (J)	
LRC	: 6.0	Duty cycle	: Cont.(S1)
Rated torque	: 119 ft.lb	Insulation class	: F
Locked rotor torque	: 220 %	Service factor	: 1.00
Breakdown torque	: 229 %	Temperature rise	: 80 K
Rated speed	: 880 rpm	Design	: A

Heating constant

Cooling constant

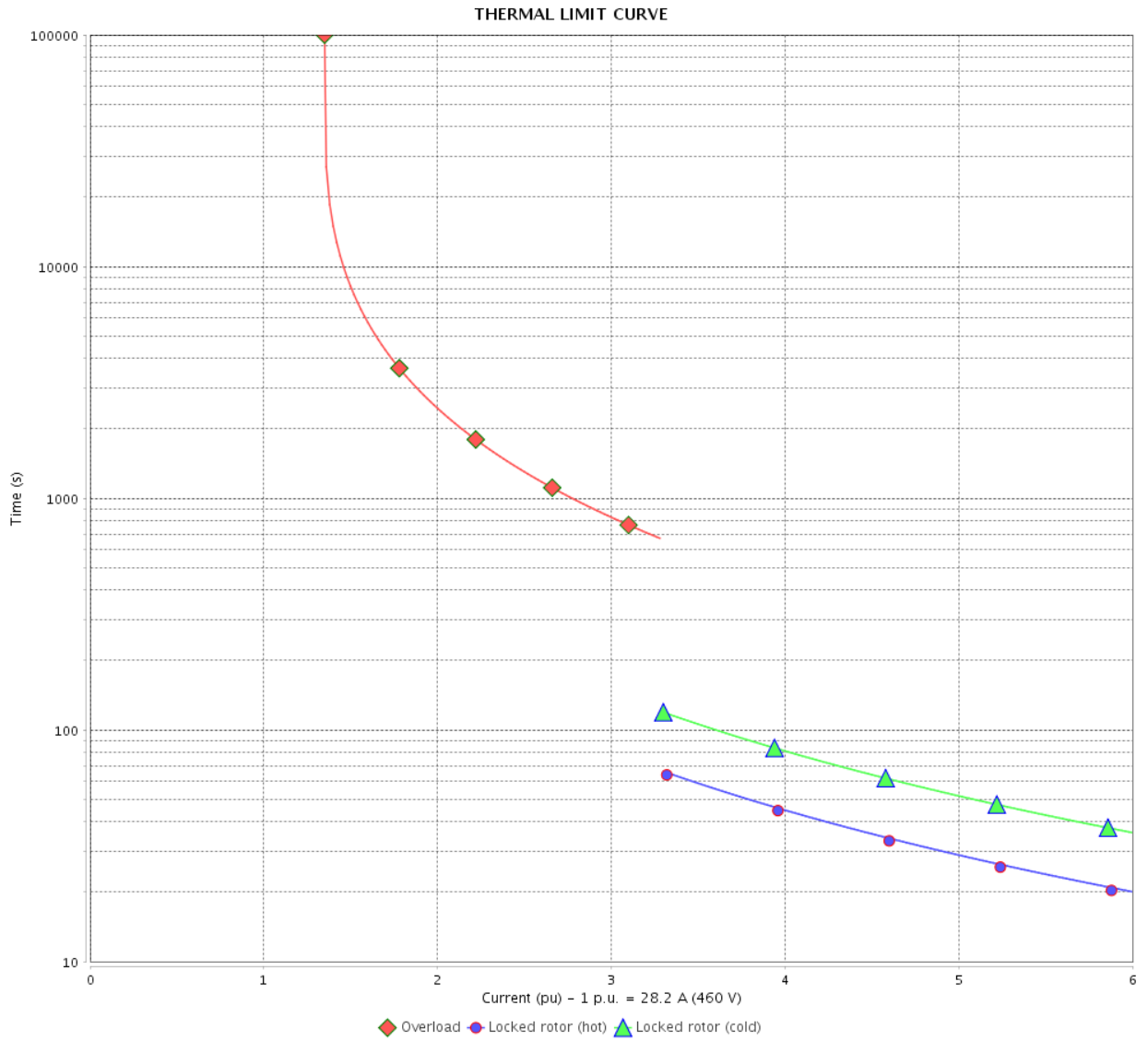
Rev.	Changes Summary	Performed	Checked	Date
Performed by				
Checked by			Page	Revision
Date	14/04/2022		4 / 6	

THERMAL LIMIT CURVE

Three Phase Induction Motor - Squirrel Cage



Customer : _____



Rev.	Changes Summary	Performed	Checked	Date
Performed by		Page		Revision
Checked by				
Date				

VFD OPERATION CURVE

Three Phase Induction Motor - Squirrel Cage

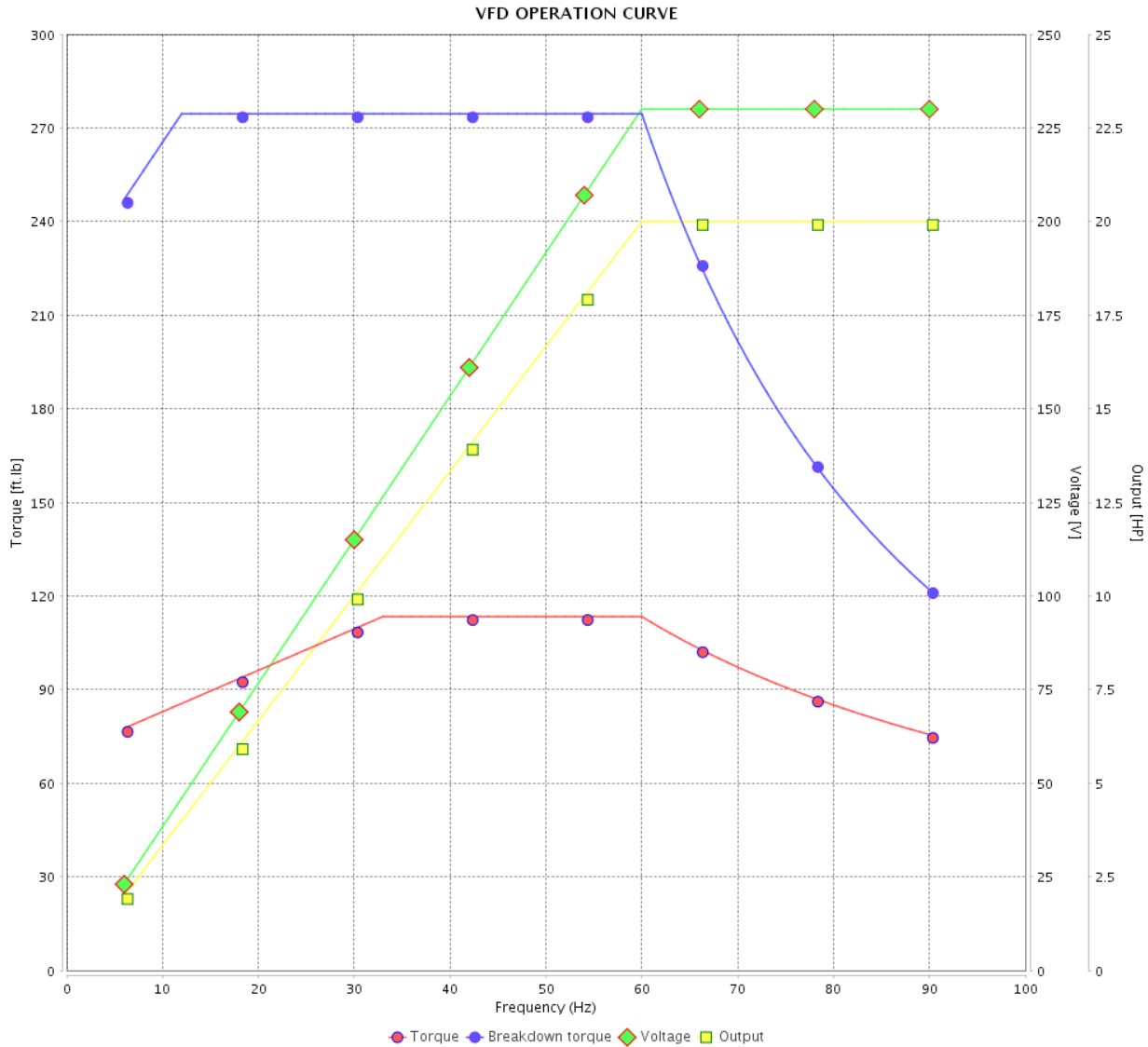


Customer :

Product line : NEMA Premium Efficiency Three-Phase

Product code : 13506377

Catalog # : 02009ET3E286T-W22



Performance : 208-230/460 V 60 Hz 8P

Rated current : 62.4-56.4/28.2 A
 LRC : 6.0
 Rated torque : 119 ft.lb
 Locked rotor torque : 220 %
 Breakdown torque : 229 %
 Rated speed : 880 rpm

Moment of inertia (J)
 Duty cycle : Cont.(S1)
 Insulation class : F
 Service factor : 1.00
 Temperature rise : 80 K
 Design : A

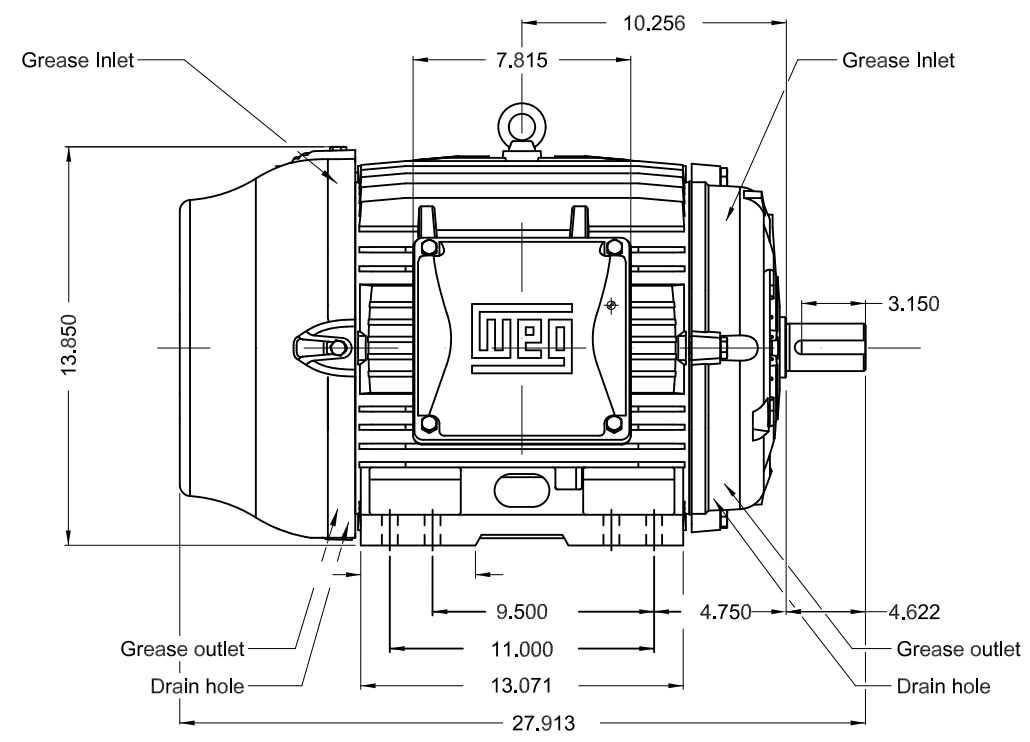
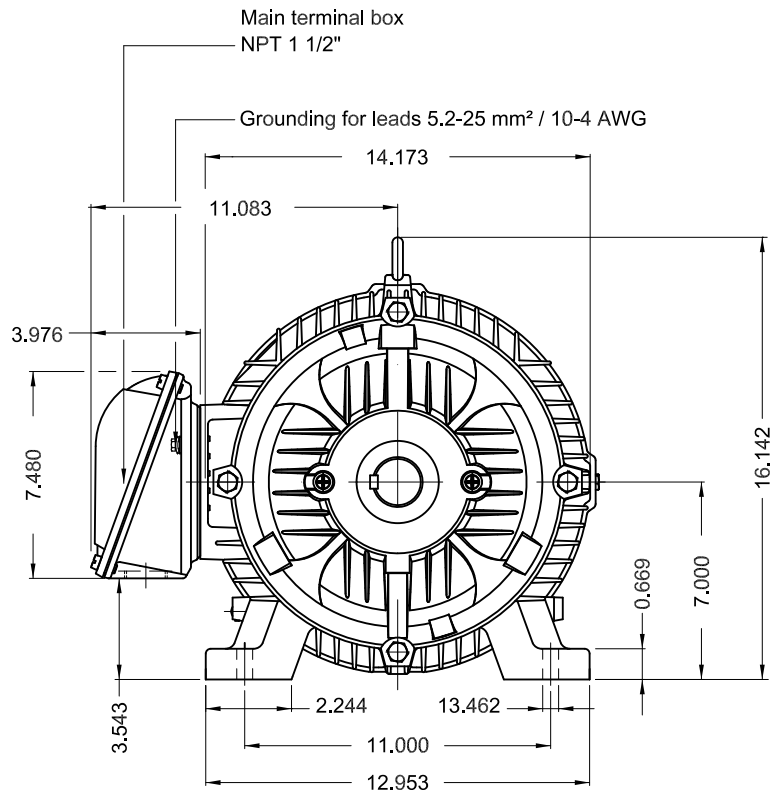
Rev.	Changes Summary	Performed	Checked	Date
Performed by			Page 6 / 6	Revision
Checked by				
Date	14/04/2022			

1 2 3 4 5 6

A

B

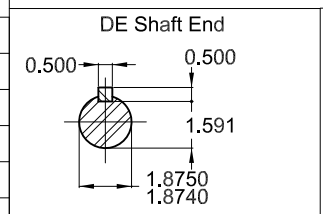
C



D

E

Design A
Color RAL 5009
Painting plan 203A
Service factor 1.0
Mounting NEMA F-1
Mounting B3R(D)



20 HP 08 Poles 60 Hz A

ECM	LOC	SUMMARY OF MODIFICATIONS	EXECUTED	CHECKED	RELEASED	DATE	VER
EXECUTED	PIRWBUSER	THREE PH. MOTOR W22 PREM. EFF.					
CHECKED		FRAME 284/6T IP55 TEFC					
RELEASED							
REL DT.	WMO	Jaragua do Sul	Product Engineering				

PREVIEW
WDD



SHEET 1 / 1

Dimensions in inches XME A3

MADE IN BRAZIL
13506377



NEMA
Premium
W22



FOR SAFE AREA
Mod.TE1BFOXON
CC029A



Class I, Div 2, Gr A, B, C and D - T3C
Class I, Zone 2, IIC - T3C
Class II, Div 2, Gr F and G - T4A
For use on PWM: Gr. A, B, C, D and F,
VT 1000:1, CT 20:1, 1.00SF - T3A

MODEL 02009ET3E286T-W22

Inverter Duty Motor
Severe Duty

PH3 60Hz Fr. 284/6T 1000m.a.s.l. IP55 TEFC 462lb

V 230/460 A 56.4/28.2

HP 20 kW 15

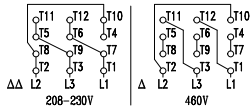
SF 1.00 SFA -



RPM 880 PF 0.74

AMB 40°C INS cl. F DT80K NEMA NOM EFF 90.2%

DUTY CONT. DES A Code H

USABLE @208V 62.4A SF 1.00



 → 6311-C3 (18g)
 → 6211-C3 (11g)

 MOBIL POLYREX EM (20000h)

