

TORQUE AND CURRENT VS SPEED CURVE

Three Phase Induction Motor - Squirrel Cage



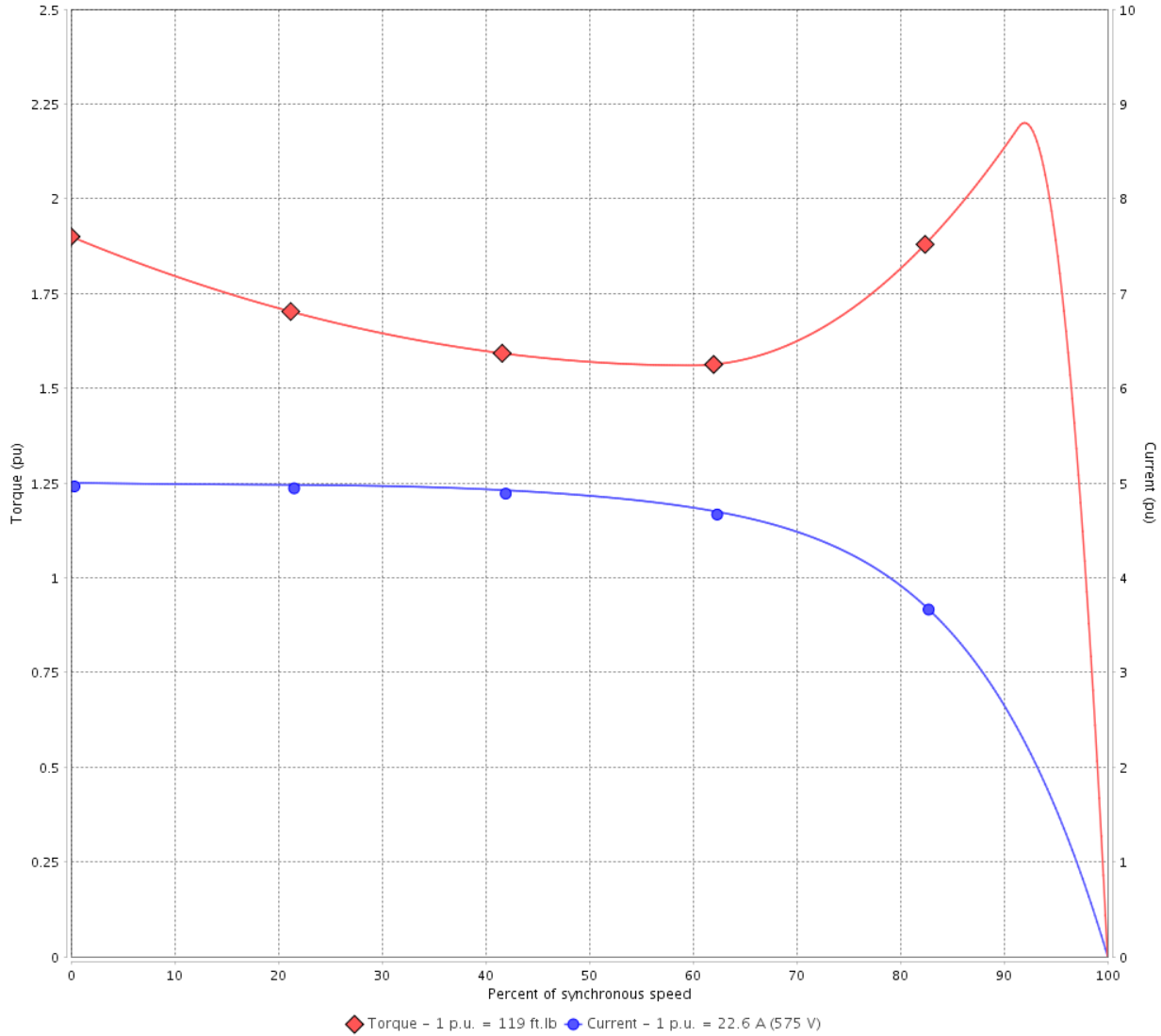
Customer :

Product line : NEMA Premium Efficiency Three-Phase

Product code : 12967947

Catalog # : 02009ST3HIE324T-W22

TORQUE AND CURRENT VS SPEED CURVE



Performance : 575 V 60 Hz 8P

Rated current	: 22.6 A	Moment of inertia (J)	: 9.37 sq.ft.lb
LRC	: 5.0	Duty cycle	: Cont.(S1)
Rated torque	: 119 ft.lb	Insulation class	: F
Locked rotor torque	: 190 %	Service factor	: 1.25
Breakdown torque	: 220 %	Temperature rise	: 80 K
Rated speed	: 880 rpm	Design	: B

Locked rotor time : 48s (cold) 27s (hot)

Rev.	Changes Summary	Performed	Checked	Date
Performed by			Page 2 / 6	Revision
Checked by				
Date	01/06/2022			

LOAD PERFORMANCE CURVE

Three Phase Induction Motor - Squirrel Cage

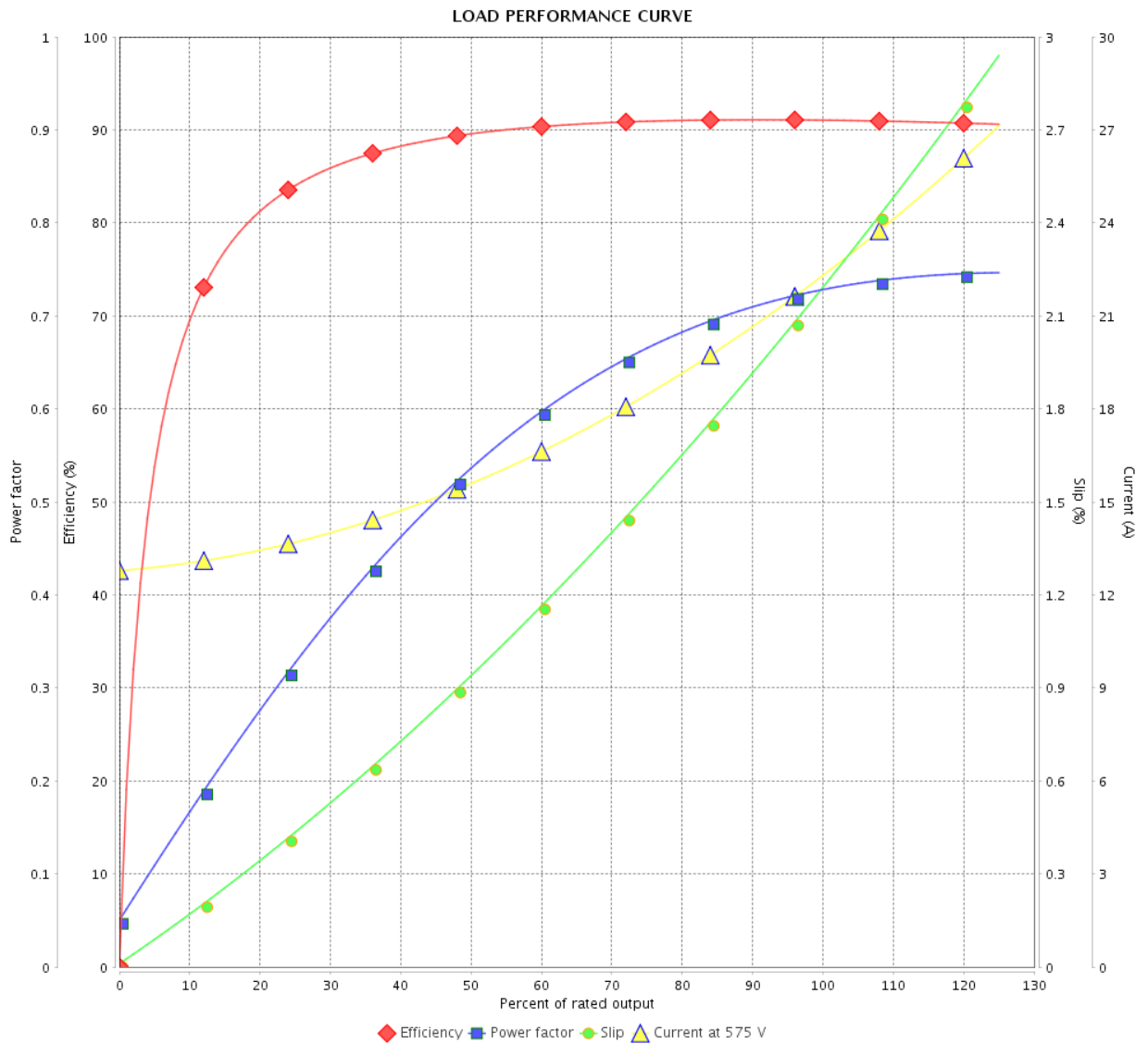


Customer : _____

Product line : NEMA Premium Efficiency Three-Phase

Product code : 12967947

Catalog # : 02009ST3HIE324T-W22



Performance : 575 V 60 Hz 8P

Rated current : 22.6 A
 LRC : 5.0
 Rated torque : 119 ft.lb
 Locked rotor torque : 190 %
 Breakdown torque : 220 %
 Rated speed : 880 rpm

Moment of inertia (J) : 9.37 sq.ft.lb
 Duty cycle : Cont.(S1)
 Insulation class : F
 Service factor : 1.25
 Temperature rise : 80 K
 Design : B

Rev.	Changes Summary	Performed	Checked	Date
Performed by		Page		Revision
Checked by		3 / 6		
Date		01/06/2022		

THERMAL LIMIT CURVE

Three Phase Induction Motor - Squirrel Cage



Customer :

Product line : NEMA Premium Efficiency Three-Phase
Product code : 12967947
Catalog # : 02009ST3HIE324T-W22

Performance : 575 V 60 Hz 8P

Rated current	: 22.6 A	Moment of inertia (J)	: 9.37 sq.ft.lb
LRC	: 5.0	Duty cycle	: Cont.(S1)
Rated torque	: 119 ft.lb	Insulation class	: F
Locked rotor torque	: 190 %	Service factor	: 1.25
Breakdown torque	: 220 %	Temperature rise	: 80 K
Rated speed	: 880 rpm	Design	: B

Heating constant

Cooling constant

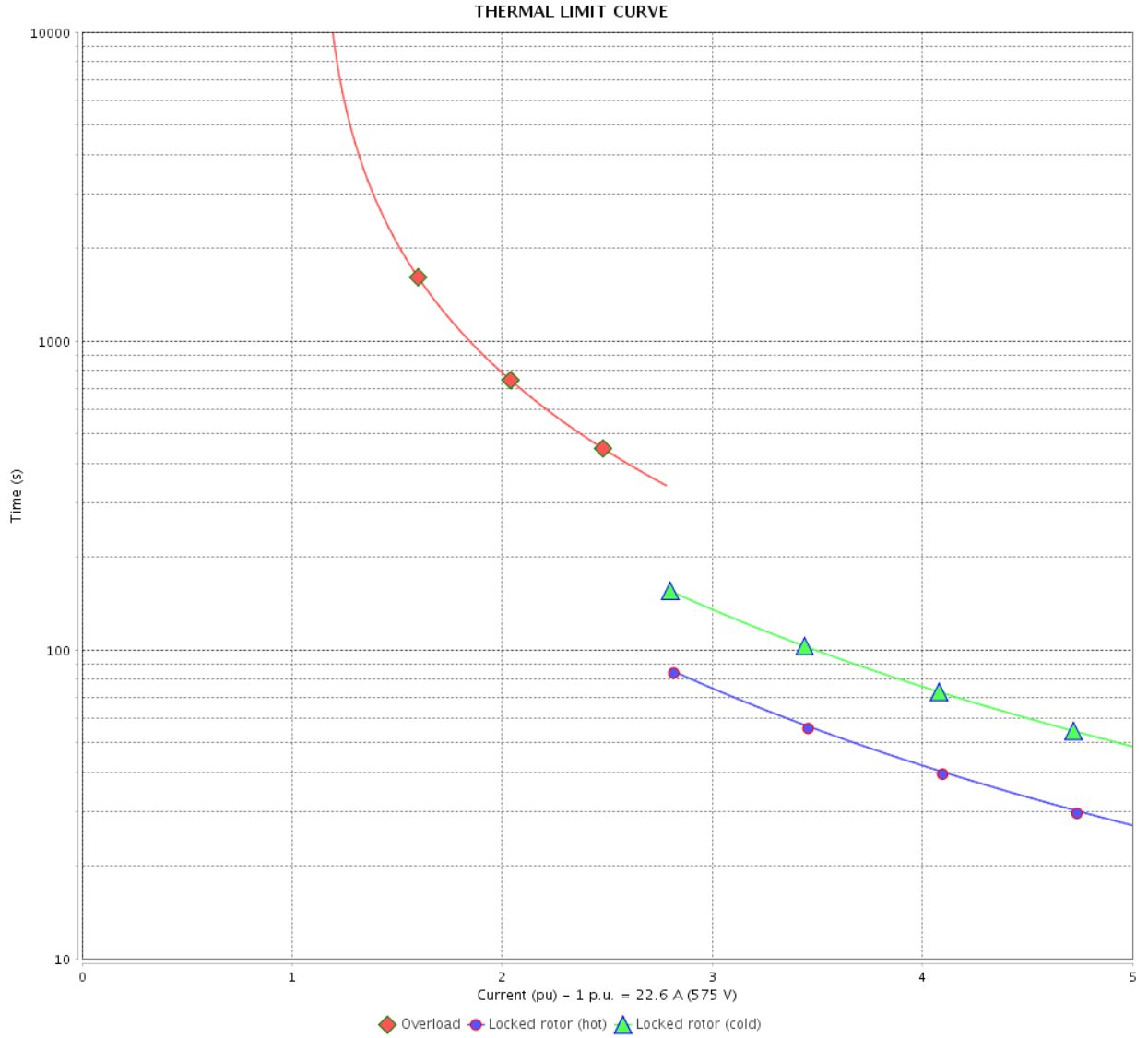
Rev.	Changes Summary	Performed	Checked	Date
Performed by				
Checked by			Page	Revision
Date	01/06/2022		4 / 6	

THERMAL LIMIT CURVE

Three Phase Induction Motor - Squirrel Cage



Customer : _____



Rev.	Changes Summary	Performed	Checked	Date
Performed by		Page		Revision
Checked by		5 / 6		
Date		01/06/2022		

VFD OPERATION CURVE

Three Phase Induction Motor - Squirrel Cage

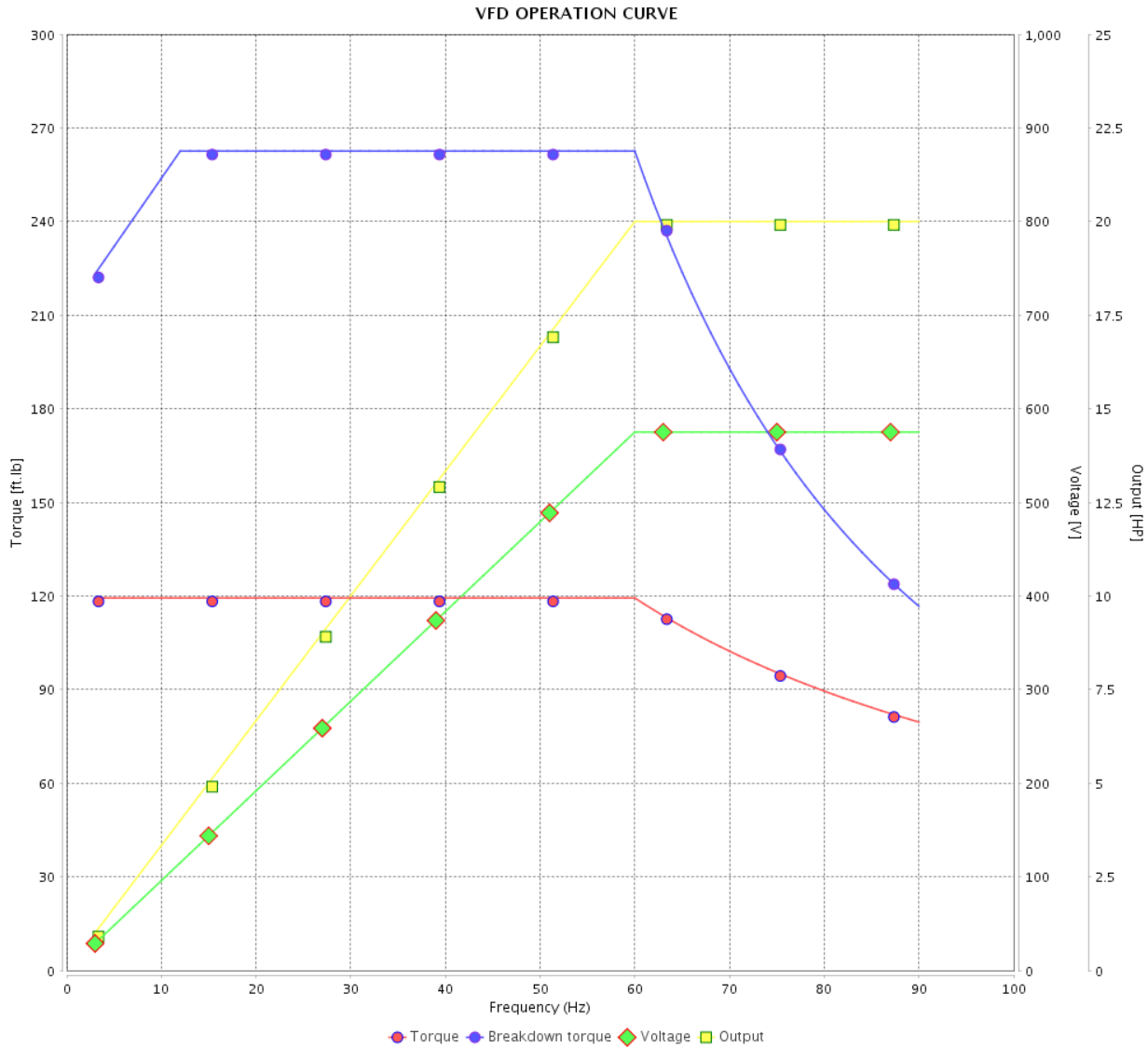


Customer :

Product line : NEMA Premium Efficiency Three-Phase

Product code : 12967947

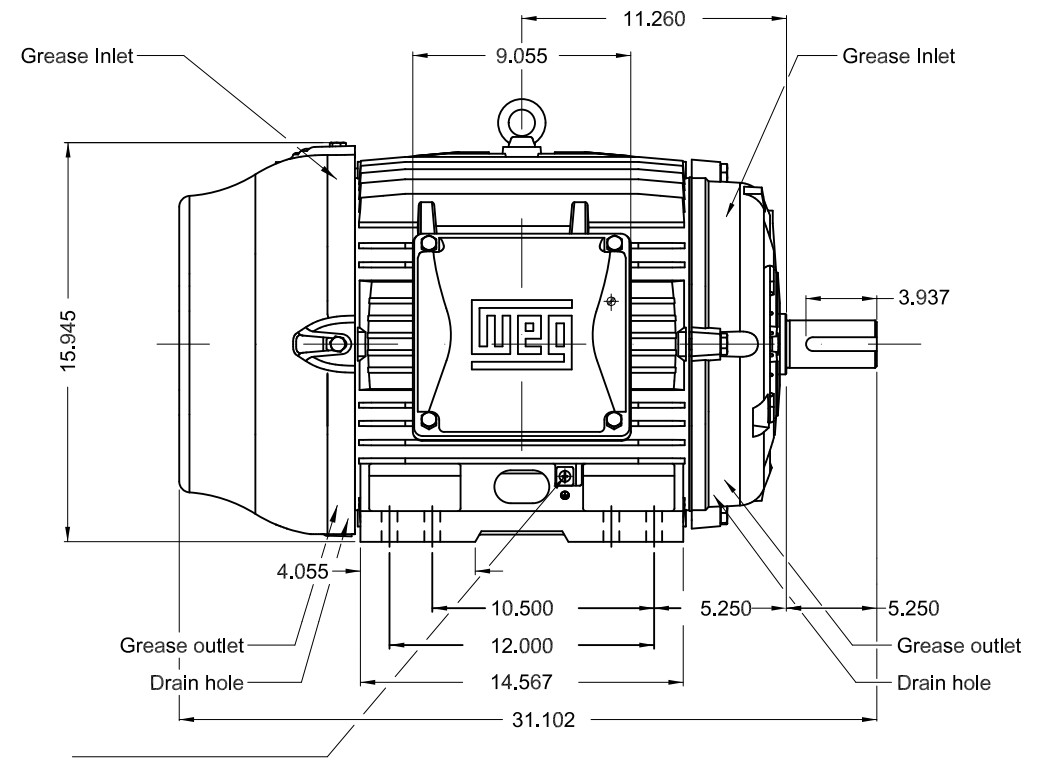
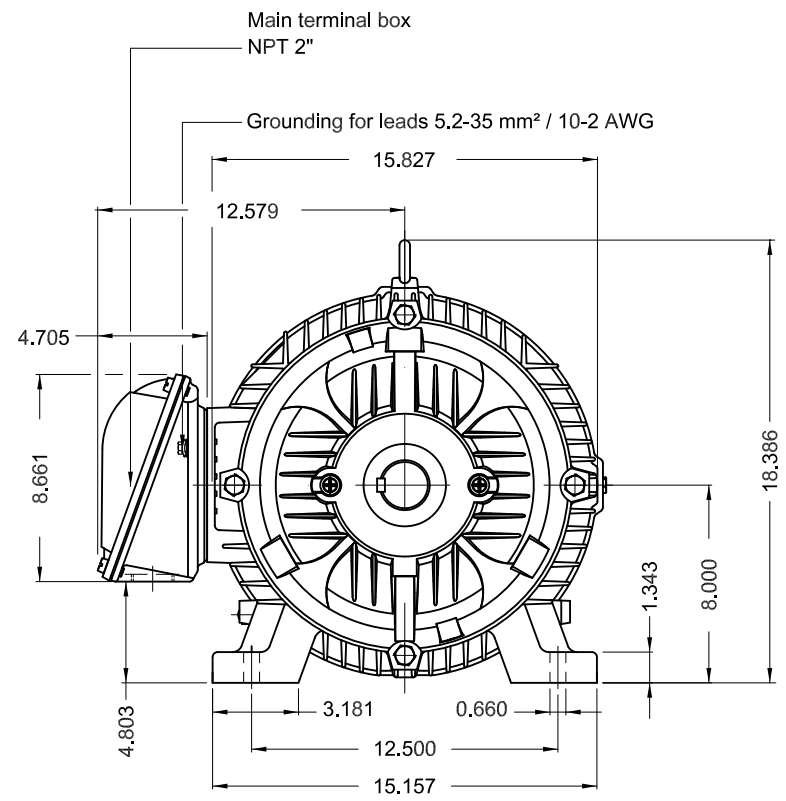
Catalog # : 02009ST3HIE324T-W22



Performance : 575 V 60 Hz 8P

Rated current	: 22.6 A	Moment of inertia (J)	: 9.37 sq.ft.lb
LRC	: 5.0	Duty cycle	: Cont.(S1)
Rated torque	: 119 ft.lb	Insulation class	: F
Locked rotor torque	: 190 %	Service factor	: 1.25
Breakdown torque	: 220 %	Temperature rise	: 80 K
Rated speed	: 880 rpm	Design	: B

Rev.	Changes Summary	Performed	Checked	Date
Performed by			Page 6 / 6	Revision
Checked by				
Date	01/06/2022			



Grounding for leads 5.2-35 mm² / 10-2 AWG

20 HP 08 Poles 60 Hz

Dimensions in inches

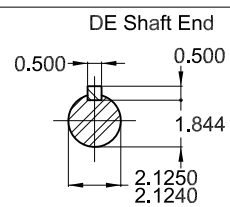
Without vertical jackscrews

Color RAL 5009

Painting plan 202E

Mounting NEMA F-1

Mounting B3R(D)



ECM	LOC	SUMMARY OF MODIFICATIONS	EXECUTED	CHECKED	RELEASED	DATE	VER
EXECUTED	HYBRISUSER	THREE PH. MOTOR IEEE 841 W22 PREM. EFF. FRAME 324/6T IP55 TEFC					
CHECKED							
RELEASED							
REL DT.	WMO	Jaragua do Sul	Product Engineering				

PREVIEW
WDD



SHEET 1 / 1



NEMA
Premium
W22



FOR SAFE AREA
Mod.TE1BFOXON
CC029A



Class I, Div 2, Gr A, B, C and D - T3
Class I, Zone 2, IIC - T3
Class II, Div 2, Gr F and G - T4
For use on PWM: Gr. A, B, C, D and F,
VT 1000:1, CT 20:1, 1.00SF - T3A

MODEL 02009ST3HIE324T-W22

Inverter Duty Motor
Severe Duty



MADE IN BRAZIL
12967947

PH3 60Hz Fr. 324/6T 1000m.a.s.l. IP55 TEFC 516lb

V 575

A 22.6

HP 20

kW 15

SF 1.25

SFA 28.3

RPM 880

PF 0.73

AMB 40°C

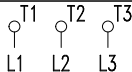
INS cl. F DT80K

NEMA NOM EFF 91.0%

DUTY CONT.

DES B Code G

GUARANT. EFF 89.5%



575V



→ 6312-C3 (21g) 60BC03X30

→ 6212-C3 (13g) 60BC02X30



MOBIL POLYREX EM (20000h)

