

DATA SHEET



Three Phase Induction Motor - Squirrel Cage

Customer : _____

Product line : NEMA Premium Efficiency Three-Phase
 Product code : 11572897
 Catalog # : 02018ET3P256T-W22

Frame	: 254/6T	Locked rotor time	: 54s (cold) 30s (hot)
Output	: 20 HP (15 kW)	Temperature rise	: 80 K
Poles	: 4	Duty cycle	: Cont.(S1)
Frequency	: 60 Hz	Ambient temperature	: -20°C to +40°C
Rated voltage	: 200 V	Altitude	: 1000 m.a.s.l.
Rated current	: 55.4 A	Protection degree	: IP55
L. R. Amperes	: 382 A	Cooling method	: IC411 - TEFC
LRC	: 6.9x(Code H)	Mounting	: F-1
No load current	: 22.1 A	Rotation ¹	: Both (CW and CCW)
Rated speed	: 1770 rpm	Noise level ²	: 64.0 dB(A)
Slip	: 1.67 %	Starting method	: Direct On Line
Rated torque	: 59.3 ft.lb	Approx. weight ³	: 374 lb
Locked rotor torque	: 240 %		
Breakdown torque	: 260 %		
Insulation class	: F		
Service factor	: 1.25		
Moment of inertia (J)	: 3.10 sq.ft.lb		
Design	: B		

Output	25%	50%	75%	100%
Efficiency (%)	91.0	91.7	92.4	93.0
Power Factor	0.43	0.68	0.79	0.84

Foundation loads	
Max. traction	: 553 lb
Max. compression	: 927 lb

	Drive end	Non drive end
Bearing type	: 6309 C3	: 6209 C3
Sealing	: V'Ring	: V'Ring
Lubrication interval	: 20000 h	: 20000 h
Lubricant amount	: 13 g	: 9 g
Lubricant type	Mobil Polyrex EM	

Notes

This revision replaces and cancel the previous one, which must be eliminated.
 (1) Looking the motor from the shaft end.
 (2) Measured at 1m and with tolerance of +3dB(A).
 (3) Approximate weight subject to changes after manufacturing process.
 (4) At 100% of full load.

These are average values based on tests with sinusoidal power supply, subject to the tolerances stipulated in NEMA MG-1.

Rev.	Changes Summary	Performed	Checked	Date
Performed by		Page 1 / 6		Revision
Checked by				
Date	14/04/2022			

TORQUE AND CURRENT VS SPEED CURVE

Three Phase Induction Motor - Squirrel Cage



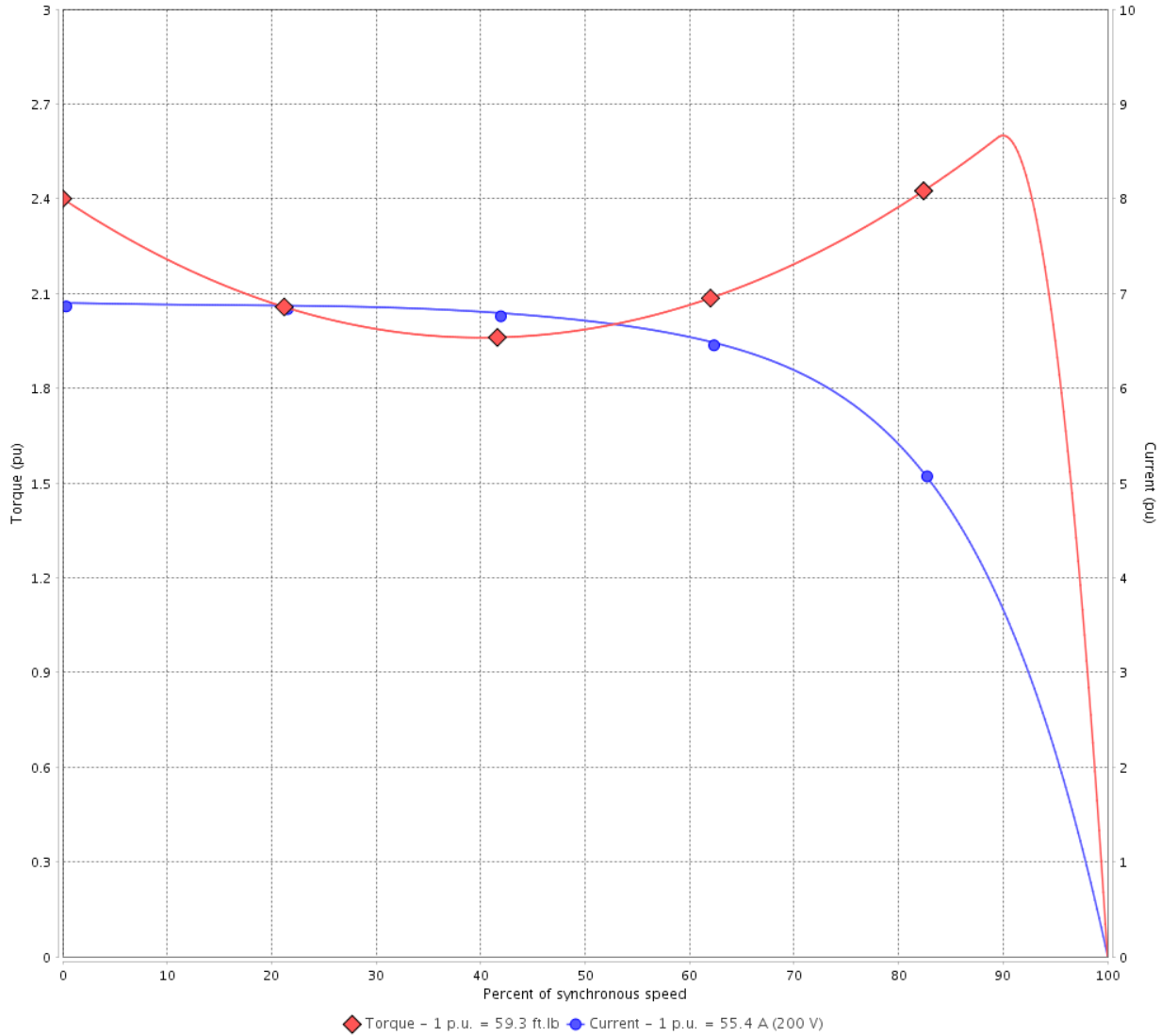
Customer :

Product line : NEMA Premium Efficiency Three-Phase

Product code : 11572897

Catalog # : 02018ET3P256T-W22

TORQUE AND CURRENT VS SPEED CURVE



Performance : 200 V 60 Hz 4P

Rated current	: 55.4 A	Moment of inertia (J)	: 3.10 sq.ft.lb
LRC	: 6.9	Duty cycle	: Cont.(S1)
Rated torque	: 59.3 ft.lb	Insulation class	: F
Locked rotor torque	: 240 %	Service factor	: 1.25
Breakdown torque	: 260 %	Temperature rise	: 80 K
Rated speed	: 1770 rpm	Design	: B

Locked rotor time : 54s (cold) 30s (hot)

Rev.	Changes Summary	Performed	Checked	Date
Performed by			Page 2 / 6	Revision
Checked by				
Date	14/04/2022			

LOAD PERFORMANCE CURVE

Three Phase Induction Motor - Squirrel Cage

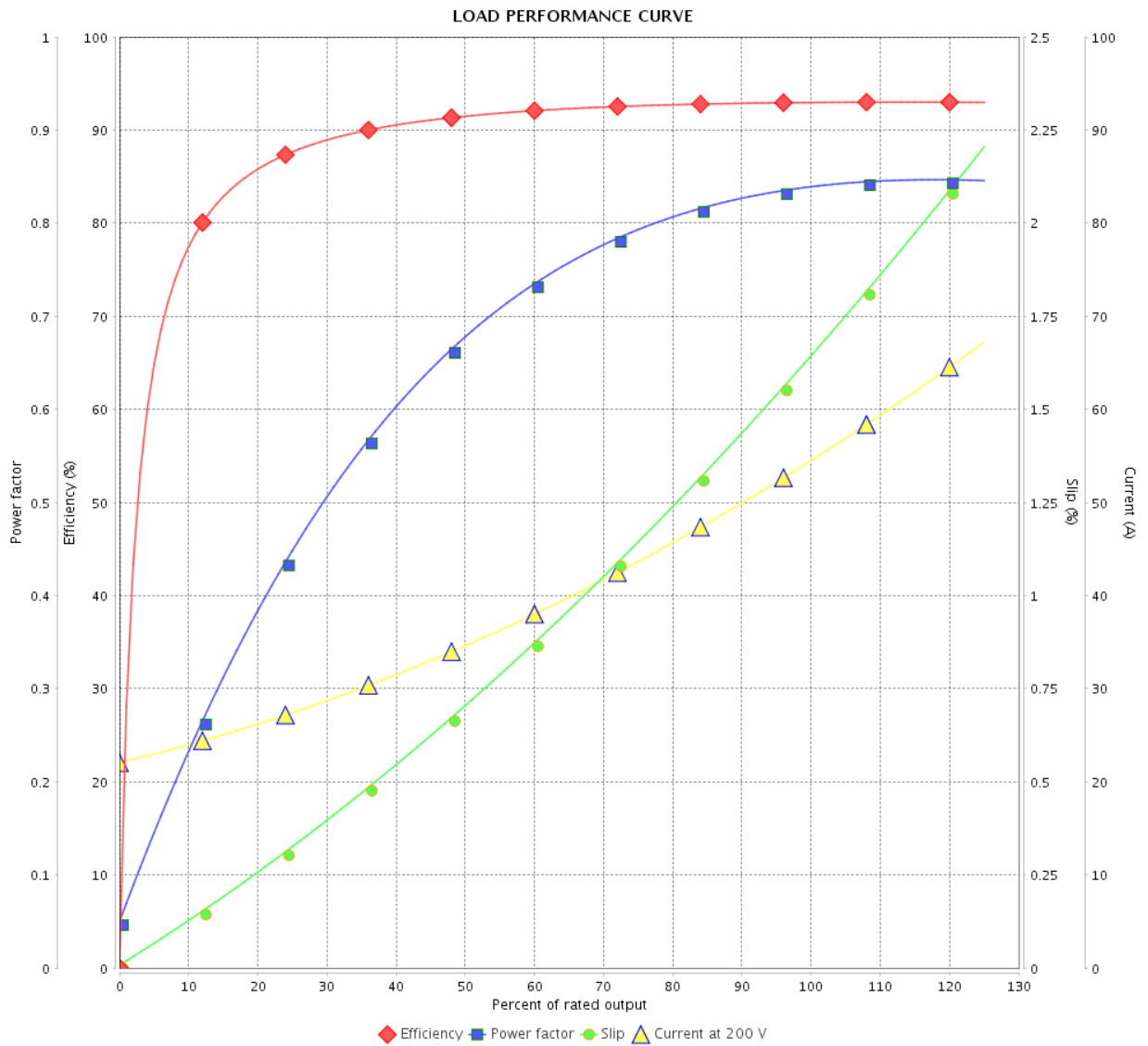


Customer : _____

Product line : NEMA Premium Efficiency Three-Phase

Product code : 11572897

Catalog # : 02018ET3P256T-W22



Performance : 200 V 60 Hz 4P

Rated current : 55.4 A
 LRC : 6.9
 Rated torque : 59.3 ft.lb
 Locked rotor torque : 240 %
 Breakdown torque : 260 %
 Rated speed : 1770 rpm

Moment of inertia (J) : 3.10 sq.ft.lb
 Duty cycle : Cont.(S1)
 Insulation class : F
 Service factor : 1.25
 Temperature rise : 80 K
 Design : B

Rev.	Changes Summary	Performed	Checked	Date
Performed by		Page		Revision
Checked by		3 / 6		
Date		14/04/2022		

THERMAL LIMIT CURVE



Three Phase Induction Motor - Squirrel Cage

Customer :

Product line : NEMA Premium Efficiency Three-Phase
Product code : 11572897
Catalog # : 02018ET3P256T-W22

Performance : 200 V 60 Hz 4P

Rated current	: 55.4 A	Moment of inertia (J)	: 3.10 sq.ft.lb
LRC	: 6.9	Duty cycle	: Cont.(S1)
Rated torque	: 59.3 ft.lb	Insulation class	: F
Locked rotor torque	: 240 %	Service factor	: 1.25
Breakdown torque	: 260 %	Temperature rise	: 80 K
Rated speed	: 1770 rpm	Design	: B

Heating constant

Cooling constant

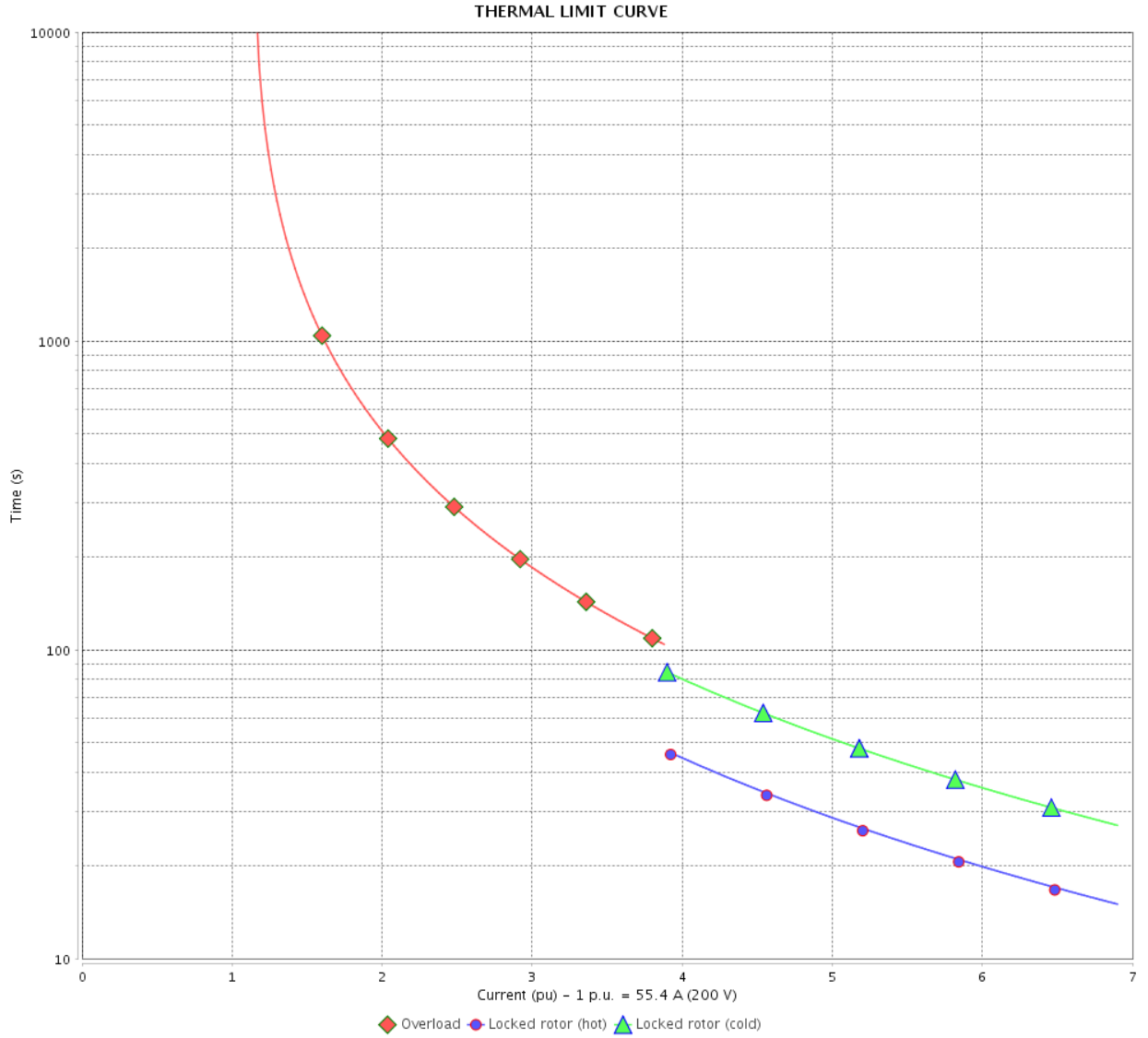
Rev.	Changes Summary	Performed	Checked	Date
Performed by				
Checked by			Page	Revision
Date	14/04/2022		4 / 6	

THERMAL LIMIT CURVE

Three Phase Induction Motor - Squirrel Cage



Customer : _____



Rev.	Changes Summary	Performed	Checked	Date
Performed by		Page 5 / 6		Revision
Checked by				
Date				

VFD OPERATION CURVE

Three Phase Induction Motor - Squirrel Cage



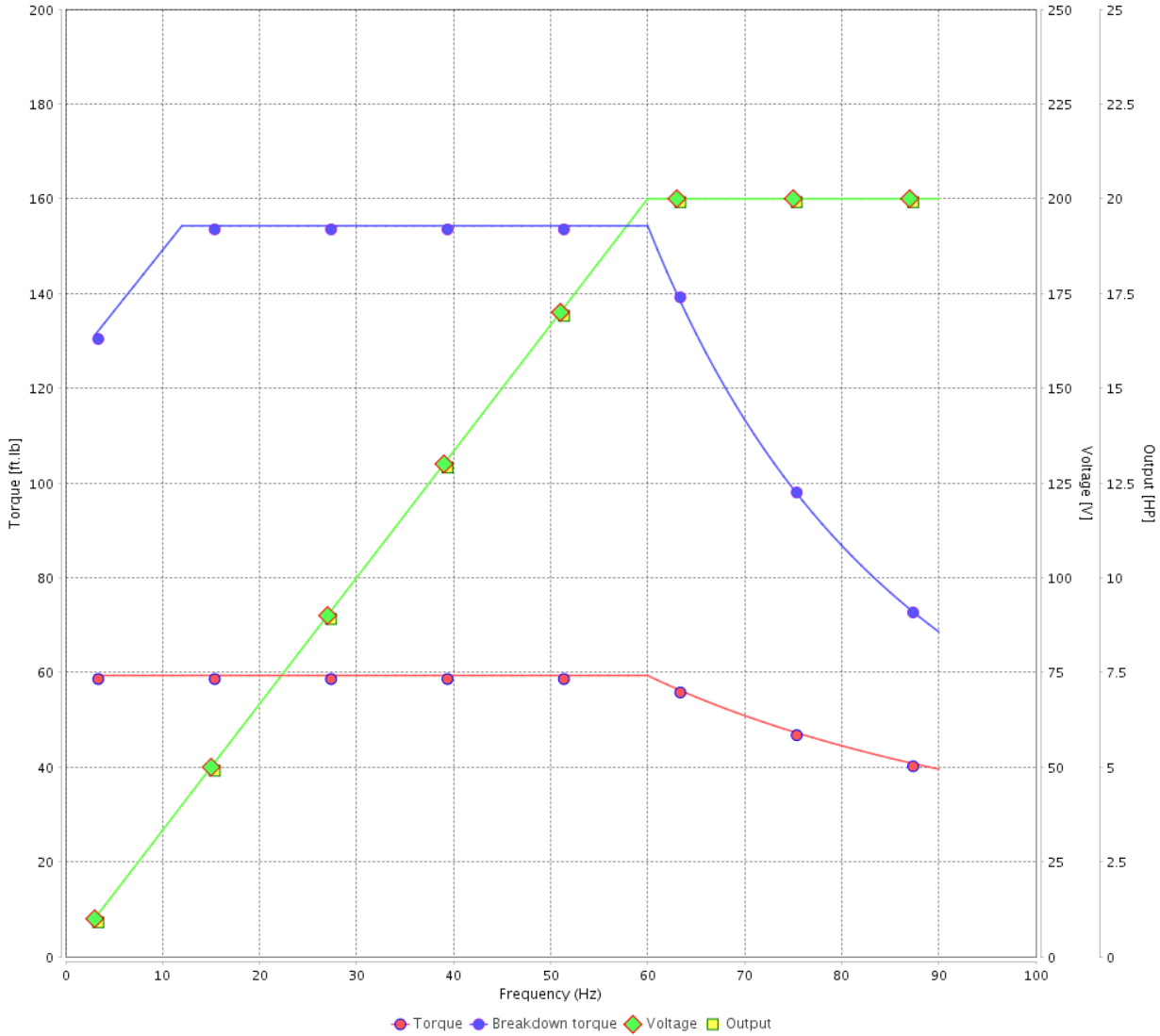
Customer :

Product line : NEMA Premium Efficiency Three-Phase

Product code : 11572897

Catalog # : 02018ET3P256T-W22

VFD OPERATION CURVE



Performance : 200 V 60 Hz 4P

Rated current : 55.4 A
 LRC : 6.9
 Rated torque : 59.3 ft.lb
 Locked rotor torque : 240 %
 Breakdown torque : 260 %
 Rated speed : 1770 rpm

Moment of inertia (J) : 3.10 sq.ft.lb
 Duty cycle : Cont.(S1)
 Insulation class : F
 Service factor : 1.25
 Temperature rise : 80 K
 Design : B

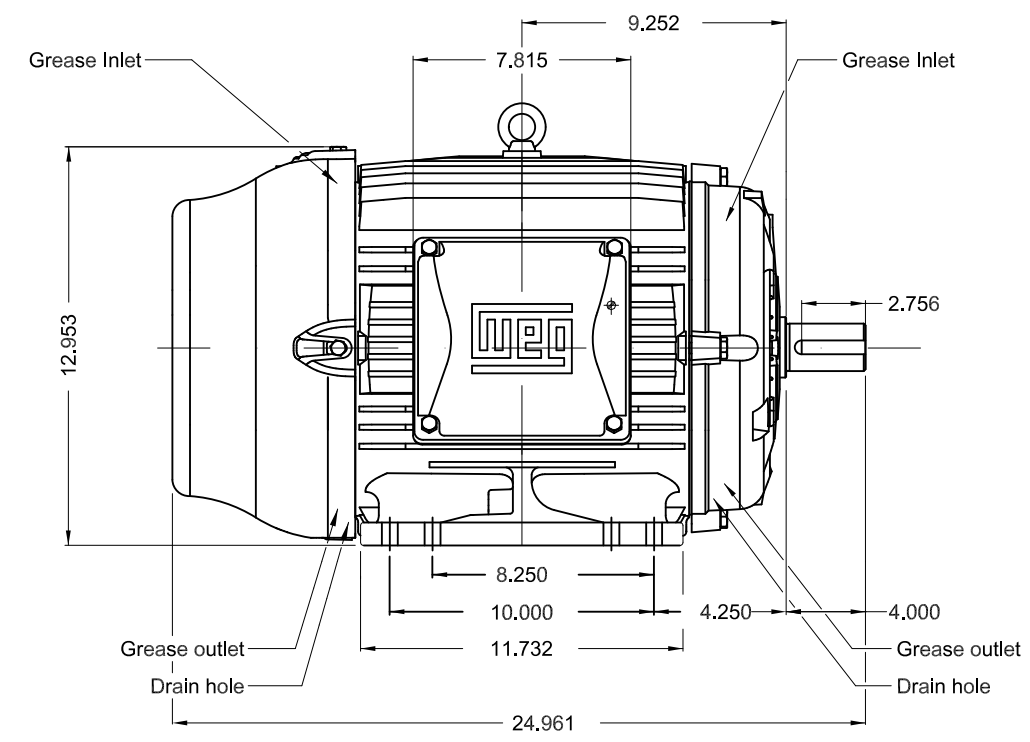
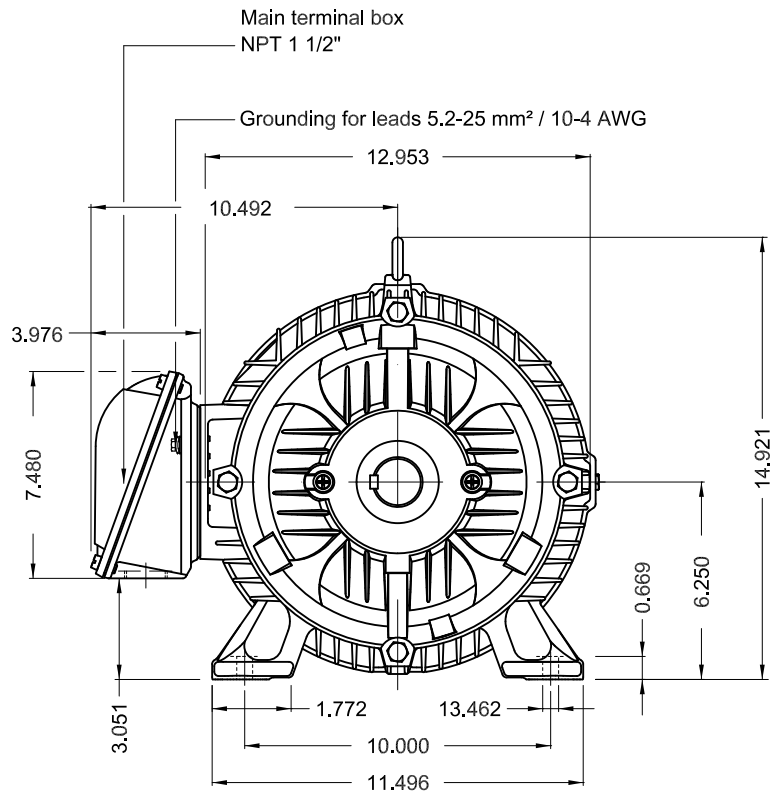
Rev.	Changes Summary	Performed	Checked	Date
Performed by			Page 6 / 6	Revision
Checked by				
Date	14/04/2022			

1 2 3 4 5 6

A

B

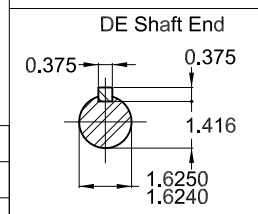
C



D

E

Color RAL 5009
 Painting plan 203A
 Mounting B3R(D)



20 HP 04 Poles 60 Hz A

ECM	LOC	SUMMARY OF MODIFICATIONS	EXECUTED	CHECKED	RELEASED	DATE	VER
EXECUTED	PIRWBUSER	THREE PH. MOTOR W22 PREM. EFF.					
CHECKED		FRAME 254/6T IP55 TEFC					
RELEASED							
REL DT.	WMO	Jaragua do Sul	Product Engineering	SHEET	1 / 1		

PREVIEW
 WDD





NEMA
Premium
W22



FOR SAFE AREA
Mod.TE1BFOXON
CC029A



Class I, Div 2, Gr A, B, C and D - T3
Class I, Zone 2, IIC - T3
Class II, Div 2, Gr F and G - T4
For use on PWM: Gr. A, B, C, D and F,
VT 1000:1, CT 20:1, 1.00SF - T3A

MODEL 02018ET3P256T-W22

Inverter Duty Motor
Severe Duty

PH3 60Hz Fr. 254/6T 1000m.a.s.l. IP55 TEFC 339lb

V 200

A 55.4

HP 20

kW 15

SF 1.25

SFA 69.3

RPM 1770

PF 0.84

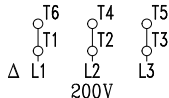
AMB 40°C

INS cl. F DT80K

NEMA NOM EFF 93.0%

DUTY CONT.

DES B Code H



→ 6309-C3 (13g)

→ 6209-C3 (9g)



MOBIL POLYREX EM (20000h)



MADE IN BRAZIL
11572897