

TORQUE AND CURRENT VS SPEED CURVE

Three Phase Induction Motor - Squirrel Cage



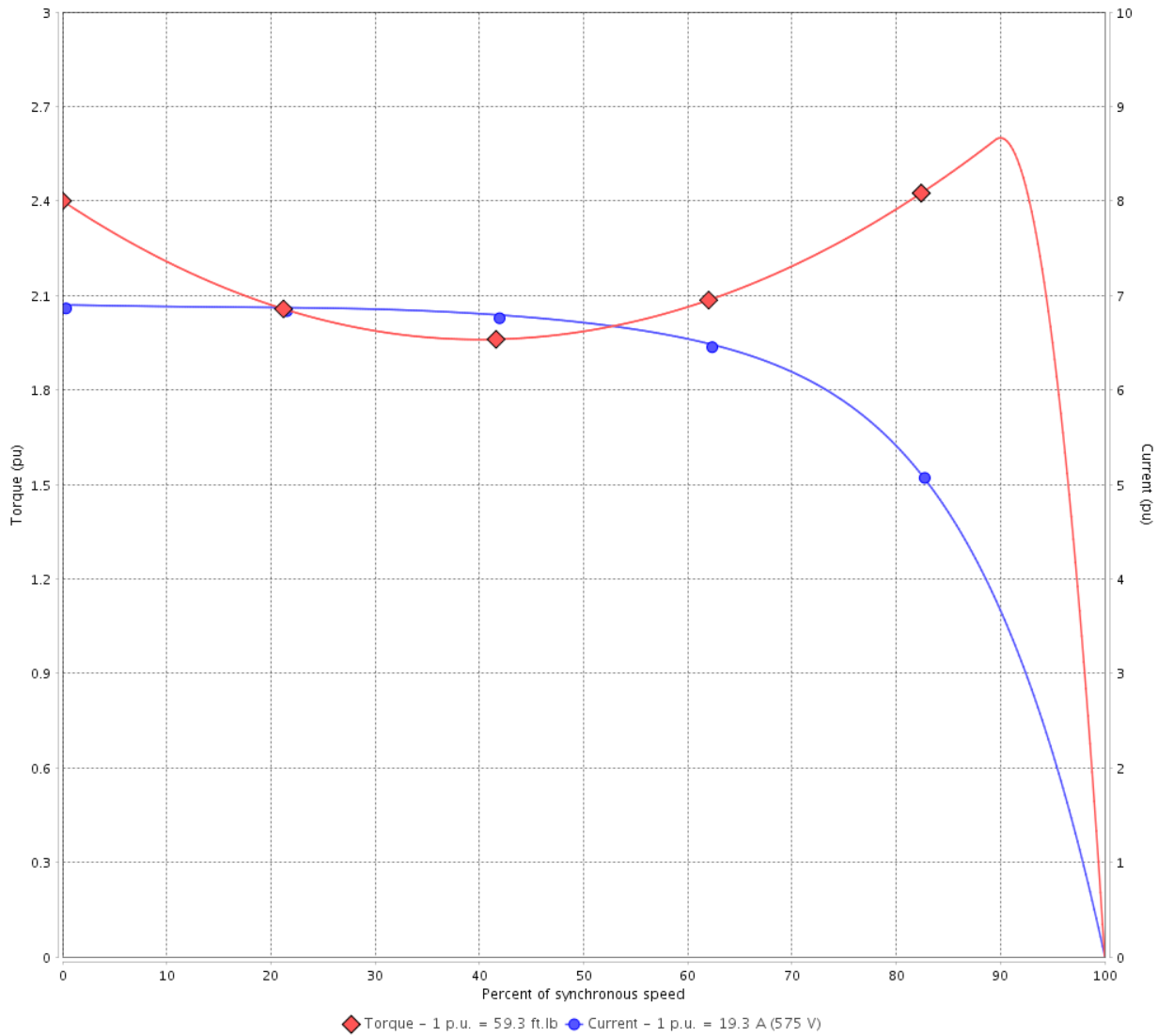
Customer :

Product line : NEMA Premium Efficiency Three-Phase

Product code : 11594866

Catalog # : 02018ST3HIE256T-W22

TORQUE AND CURRENT VS SPEED CURVE



Performance : 575 V 60 Hz 4P

Rated current	: 19.3 A	Moment of inertia (J)	: 3.10 sq.ft.lb
LRC	: 6.9	Duty cycle	: Cont.(S1)
Rated torque	: 59.3 ft.lb	Insulation class	: F
Locked rotor torque	: 270 %	Service factor	: 1.25
Breakdown torque	: 280 %	Temperature rise	: 80 K
Rated speed	: 1765 rpm	Design	: B

Locked rotor time : 27s (cold) 15s (hot)

Rev.	Changes Summary	Performed	Checked	Date
Performed by			Page 2 / 6	Revision
Checked by				
Date	14/04/2022			

LOAD PERFORMANCE CURVE

Three Phase Induction Motor - Squirrel Cage

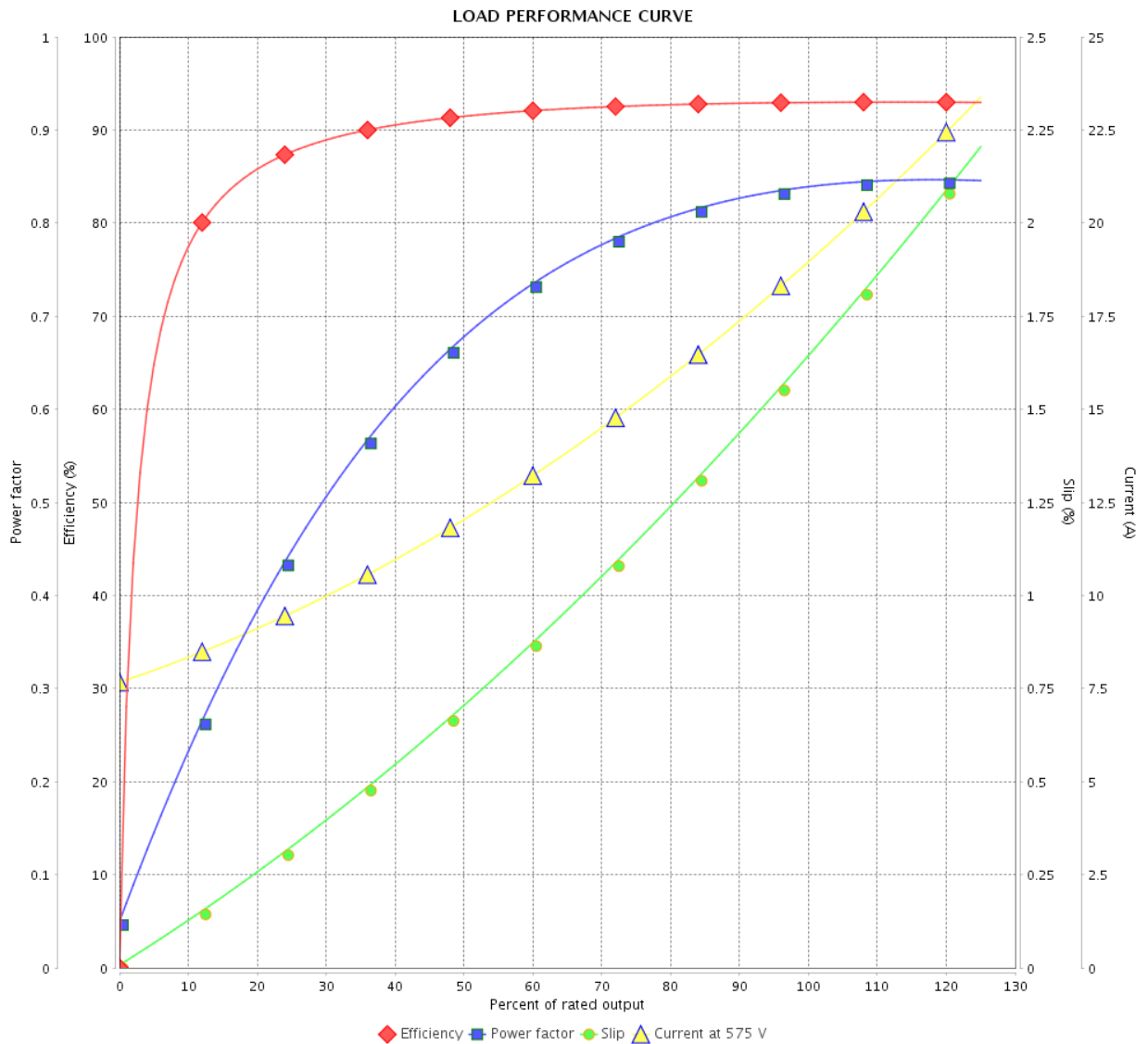


Customer : _____

Product line : NEMA Premium Efficiency Three-Phase

Product code : 11594866

Catalog # : 02018ST3HIE256T-W22



Performance : 575 V 60 Hz 4P

Rated current : 19.3 A
 LRC : 6.9
 Rated torque : 59.3 ft.lb
 Locked rotor torque : 270 %
 Breakdown torque : 280 %
 Rated speed : 1765 rpm

Moment of inertia (J) : 3.10 sq.ft.lb
 Duty cycle : Cont.(S1)
 Insulation class : F
 Service factor : 1.25
 Temperature rise : 80 K
 Design : B

Rev.	Changes Summary	Performed	Checked	Date
Performed by			Page	Revision
Checked by				
Date				

THERMAL LIMIT CURVE

Three Phase Induction Motor - Squirrel Cage



Customer :

Product line : NEMA Premium Efficiency Three-Phase
Product code : 11594866
Catalog # : 02018ST3HIE256T-W22

Performance : 575 V 60 Hz 4P

Rated current	: 19.3 A	Moment of inertia (J)	: 3.10 sq.ft.lb
LRC	: 6.9	Duty cycle	: Cont.(S1)
Rated torque	: 59.3 ft.lb	Insulation class	: F
Locked rotor torque	: 270 %	Service factor	: 1.25
Breakdown torque	: 280 %	Temperature rise	: 80 K
Rated speed	: 1765 rpm	Design	: B

Heating constant

Cooling constant

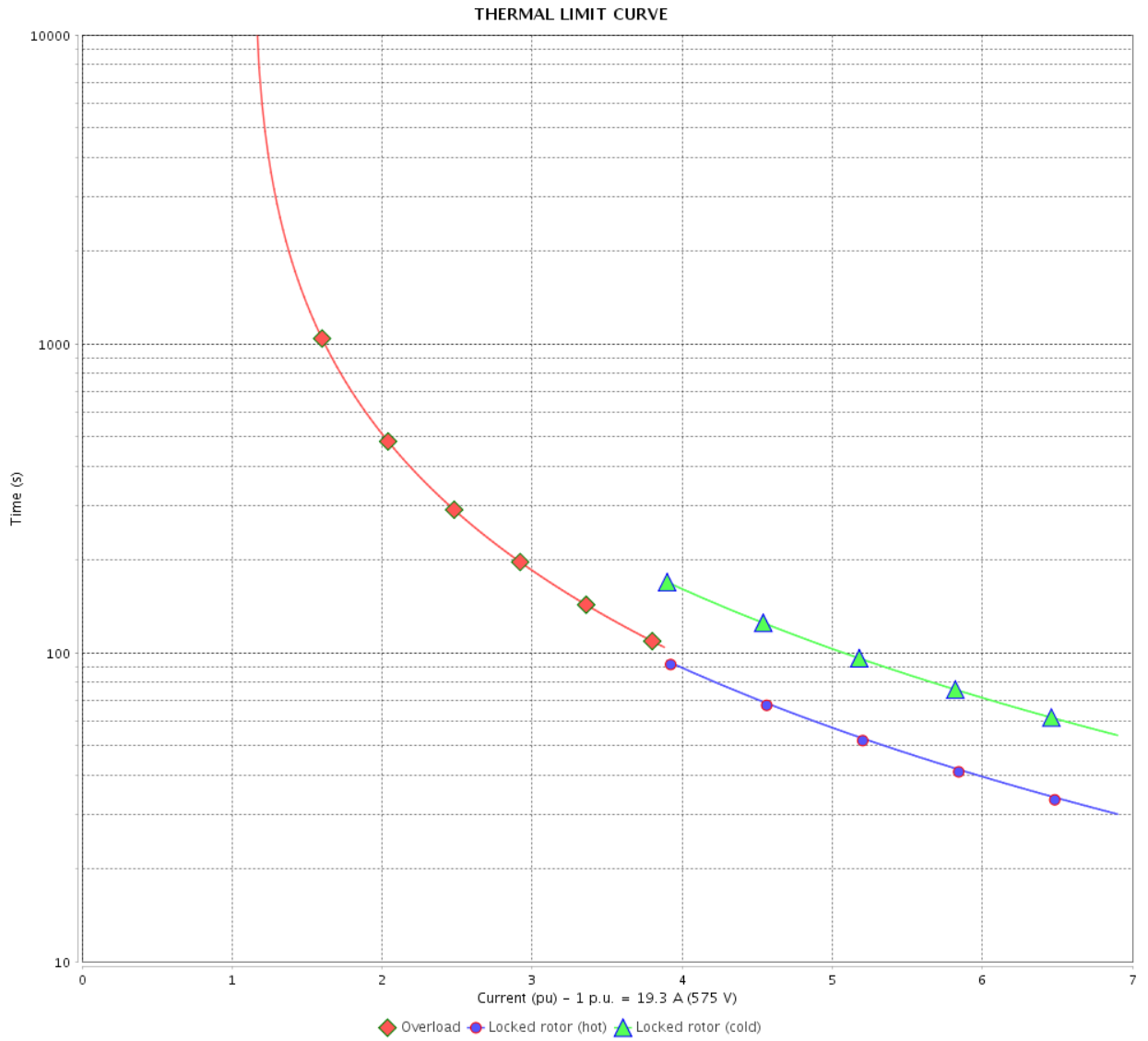
Rev.	Changes Summary	Performed	Checked	Date
Performed by				
Checked by			Page	Revision
Date	14/04/2022		4 / 6	

THERMAL LIMIT CURVE

Three Phase Induction Motor - Squirrel Cage



Customer : _____



Rev.	Changes Summary	Performed	Checked	Date
Performed by		Page 5 / 6		Revision
Checked by				
Date				

VFD OPERATION CURVE

Three Phase Induction Motor - Squirrel Cage

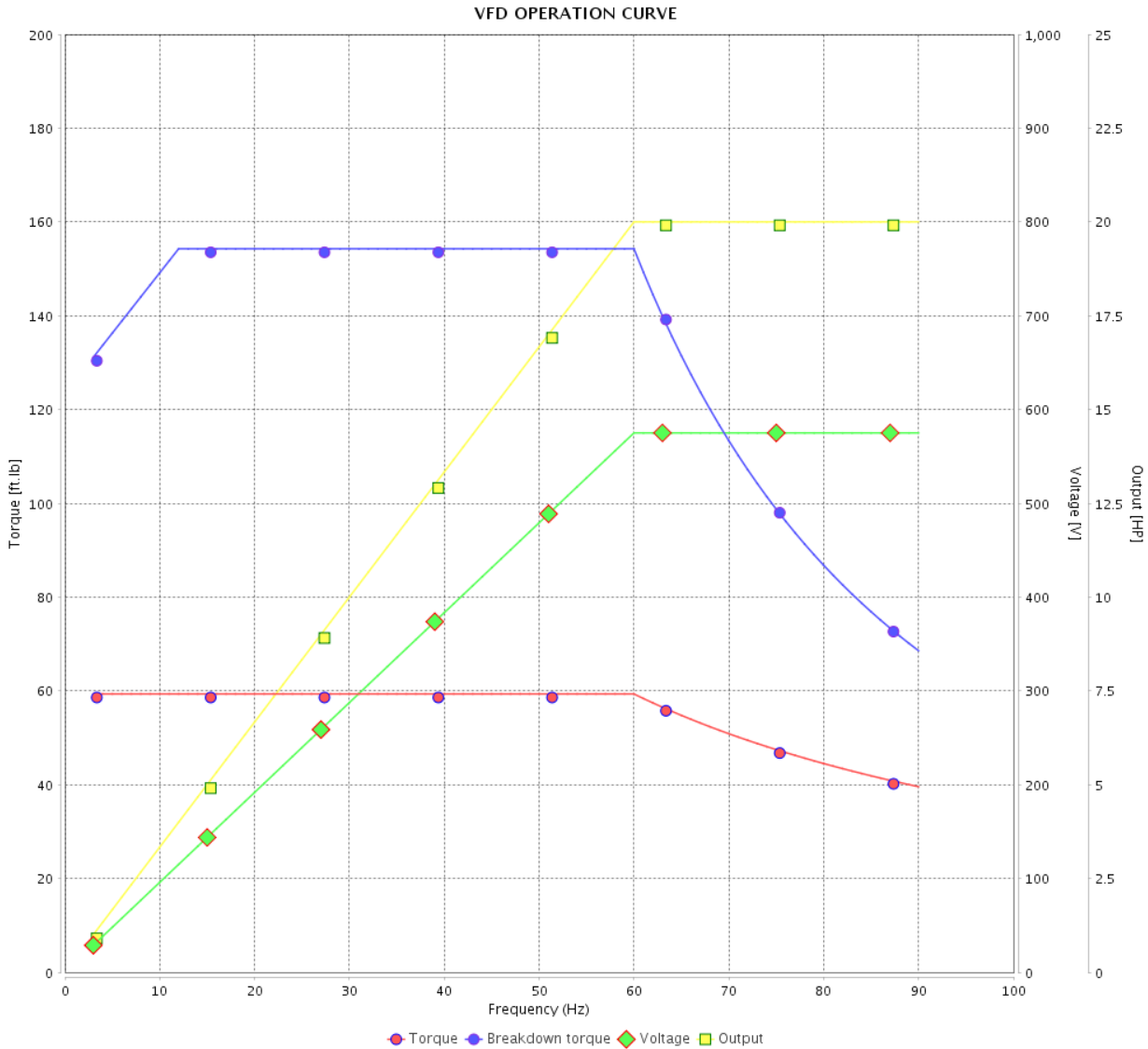


Customer :

Product line : NEMA Premium Efficiency Three-Phase

Product code : 11594866

Catalog # : 02018ST3HIE256T-W22



Performance : 575 V 60 Hz 4P

Rated current : 19.3 A
 LRC : 6.9
 Rated torque : 59.3 ft.lb
 Locked rotor torque : 270 %
 Breakdown torque : 280 %
 Rated speed : 1765 rpm

Moment of inertia (J) : 3.10 sq.ft.lb
 Duty cycle : Cont.(S1)
 Insulation class : F
 Service factor : 1.25
 Temperature rise : 80 K
 Design : B

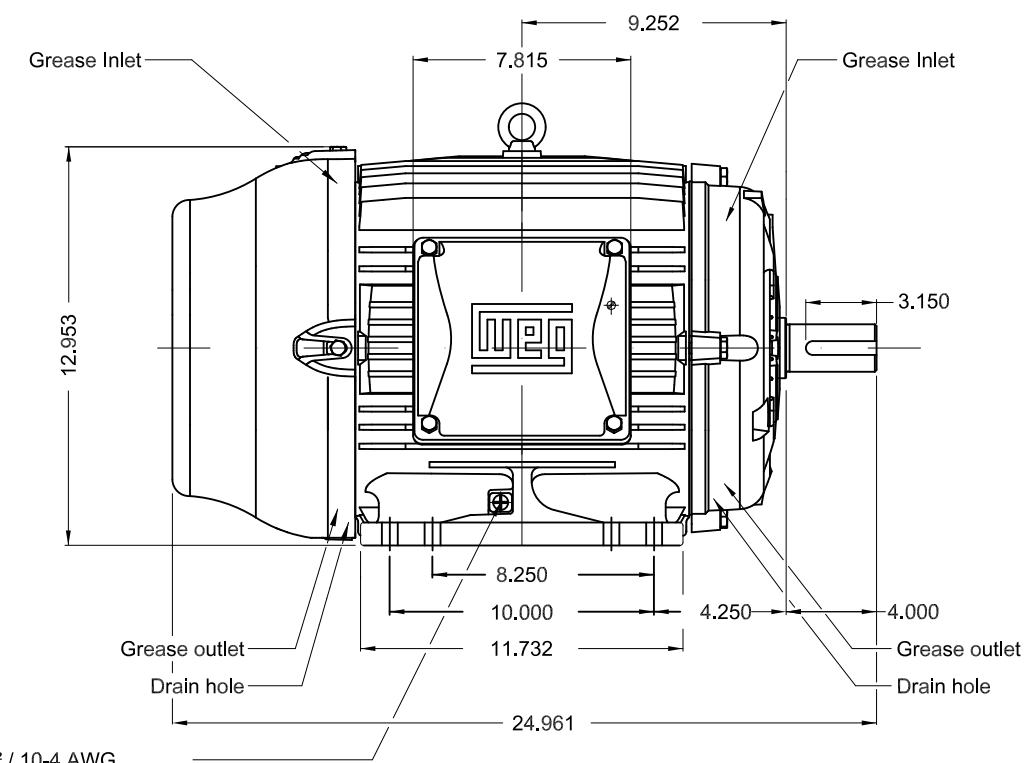
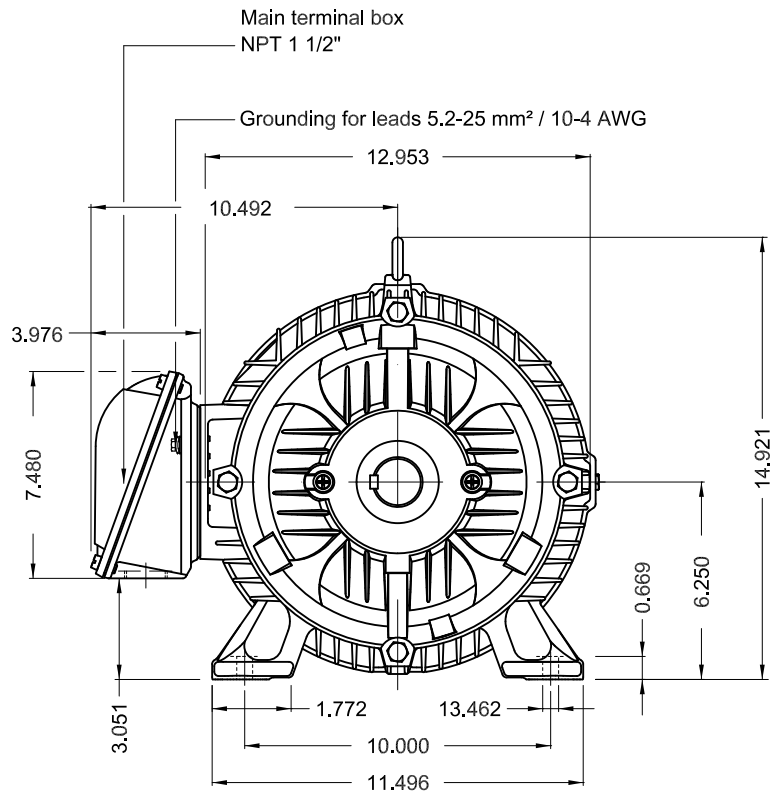
Rev.	Changes Summary	Performed	Checked	Date
Performed by			Page 6 / 6	Revision
Checked by				
Date	14/04/2022			

1 2 3 4 5 6

A

B

C

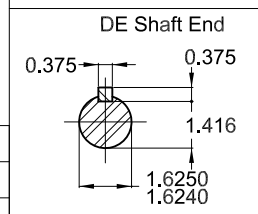


Grounding for leads 5.2-25 mm² / 10-4 AWG

D

E

Color RAL 5009
 Painting plan 202E
 Mounting B3R(D)



20 HP 04 Poles 60 Hz A

ECM	LOC	SUMMARY OF MODIFICATIONS	EXECUTED	CHECKED	RELEASED	DATE	VER
EXECUTED	PIRWBUSER	THREE PH. MOTOR IEEE 841 W22 PREM. EFF.					
CHECKED		FRAME 254/6T IP55 TEFC					
RELEASED							
REL DT.	WMO	Jaragua do Sul	Product Engineering				

PREVIEW
 WDD



SHEET 1 / 1

Dimensions in inches XME A3



NEMA
Premium
W22



FOR SAFE AREA
Mod.TE1BFOXON
CC029A



Class I, Div 2, Gr A, B, C and D - T3
Class I, Zone 2, IIC - T3
Class II, Div 2, Gr F and G - T4
For use on PWM: Gr. A, B, C, D and F,
VT 1000:1, CT 20:1, 1.00SF - T3A

IE020504W22IS



Inverter Duty Motor
Severe Duty

MADE IN BRAZIL
11594866

PH3 60Hz Fr. 254/6T 1000m.a.s.l. IP55 TEFC 344lb

V 575

A 19.3

HP 20

kW 15

SF 1.25

SFA 24.1

RPM 1770

PF 0.84

AMB 40°C

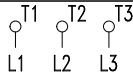
INS cl. F DT80K

NEMA NOM EFF 93.0%

DUTY CONT.

DES B Code H

GUARANT. EFF 91.7%



575V



→ 6309-C3 (13g) 45BC03X30

→ 6209-C3 (9g) 45BC02X30



MOBIL POLYREX EM (20000h)

