

DATA SHEET



Three Phase Induction Motor - Squirrel Cage

Customer :				
Product line : JM Pump NEMA Premium Efficiency Three-Phase	Product code : 14391674			
	Catalog # : 02036ET3H256JM-SG			
Frame : 254/6JM	Locked rotor time : 21s (cold) 12s (hot)			
Output : 20 HP (15 kW)	Temperature rise : 80 K			
Poles : 2	Duty cycle : Cont.(S1)			
Frequency : 60 Hz	Ambient temperature : -20°C to +40°C			
Rated voltage : 575 V	Altitude : 1000 m.a.s.l.			
Rated current : 18.2 A	Protection degree : IP55			
L. R. Amperes : 120 A	Cooling method : IC411 - TEFC			
LRC : 6.6x(Code G)	Mounting : F-1			
No load current : 5.50 A	Rotation ¹ : Both (CW and CCW)			
Rated speed : 3515 rpm	Noise level ² : 75.0 dB(A)			
Slip : 2.36 %	Starting method : Direct On Line			
Rated torque : 29.9 ft.lb	Approx. weight ³ : 211 lb			
Locked rotor torque : 200 %				
Breakdown torque : 290 %				
Insulation class : F				
Service factor : 1.15				
Moment of inertia (J) : 1.22 sq.ft.lb				
Design : B				
Output 25% 50% 75% 100%	Foundation loads			
Efficiency (%) 89.7 90.0 91.0 91.0	Max. traction : 310 lb			
Power Factor 0.55 0.81 0.88 0.91	Max. compression : 521 lb			
Bearing type : <u>Drive end</u> 6309 Z C3 <u>Non drive end</u> 6208 Z C3				
Sealing : V'Ring Without Bearing Seal				
Lubrication interval : 15797 h 20000 h				
Lubricant amount : 13 g 8 g				
Lubricant type : Mobil Polyrex EM				
Notes				
This revision replaces and cancel the previous one, which must be eliminated. (1) Looking the motor from the shaft end. (2) Measured at 1m and with tolerance of +3dB(A). (3) Approximate weight subject to changes after manufacturing process. (4) At 100% of full load.	These are average values based on tests with sinusoidal power supply, subject to the tolerances stipulated in NEMA MG-1.			
Rev.	Changes Summary	Performed	Checked	Date
Performed by				
Checked by			Page	Revision
Date	14/04/2022		1 / 6	

TORQUE AND CURRENT VS SPEED CURVE

Three Phase Induction Motor - Squirrel Cage



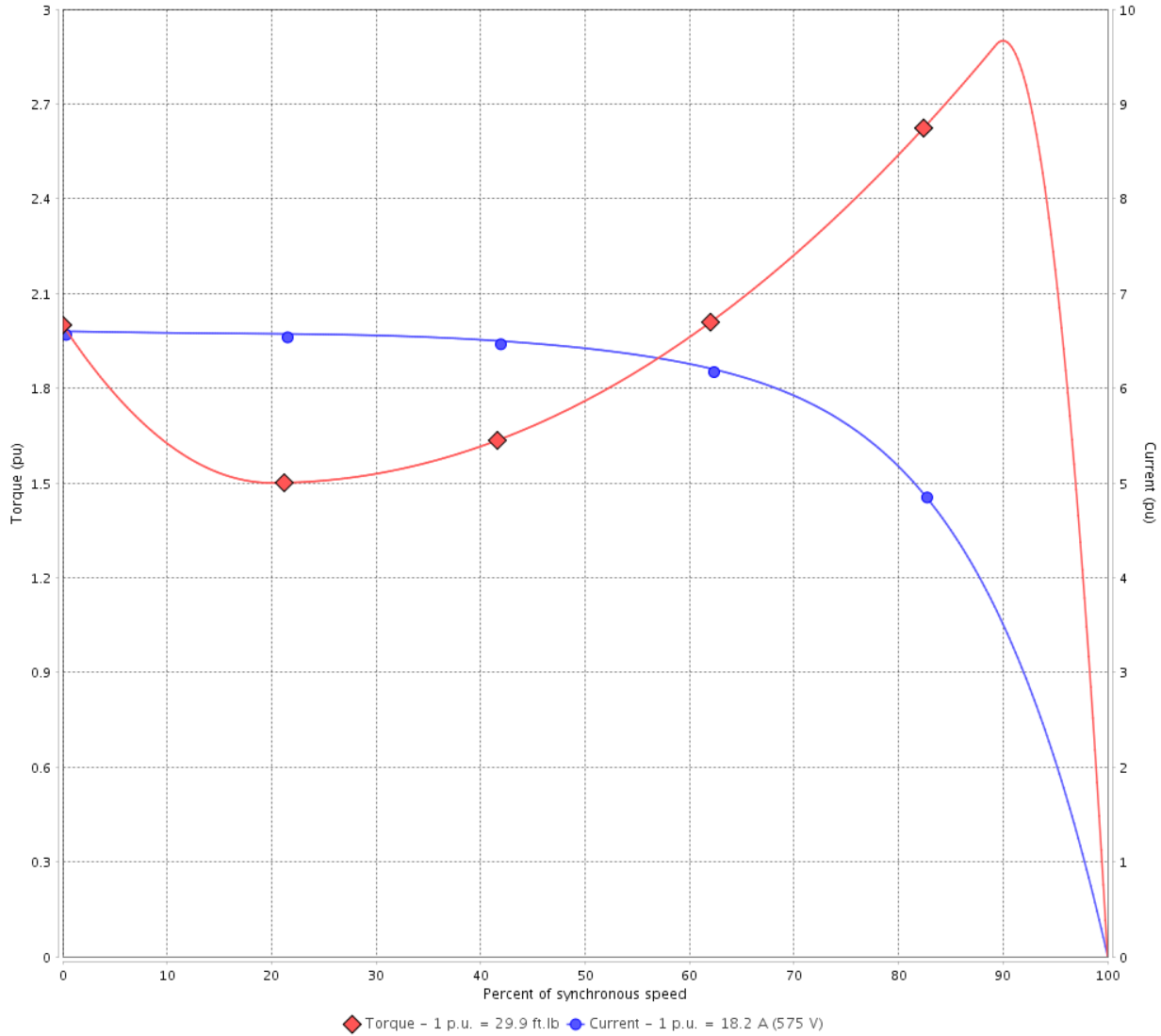
Customer :

Product line : JM Pump NEMA Premium
Efficiency Three-Phase

Product code : 14391674

Catalog # : 02036ET3H256JM-SG

TORQUE AND CURRENT VS SPEED CURVE



Performance : 575 V 60 Hz 2P

Rated current	: 18.2 A	Moment of inertia (J)	: 1.22 sq.ft.lb
LRC	: 6.6	Duty cycle	: Cont.(S1)
Rated torque	: 29.9 ft.lb	Insulation class	: F
Locked rotor torque	: 200 %	Service factor	: 1.15
Breakdown torque	: 290 %	Temperature rise	: 80 K
Rated speed	: 3515 rpm	Design	: B

Locked rotor time : 21s (cold) 12s (hot)

Rev.	Changes Summary	Performed	Checked	Date
Performed by			Page 2 / 6	Revision
Checked by				
Date	14/04/2022			

LOAD PERFORMANCE CURVE

Three Phase Induction Motor - Squirrel Cage

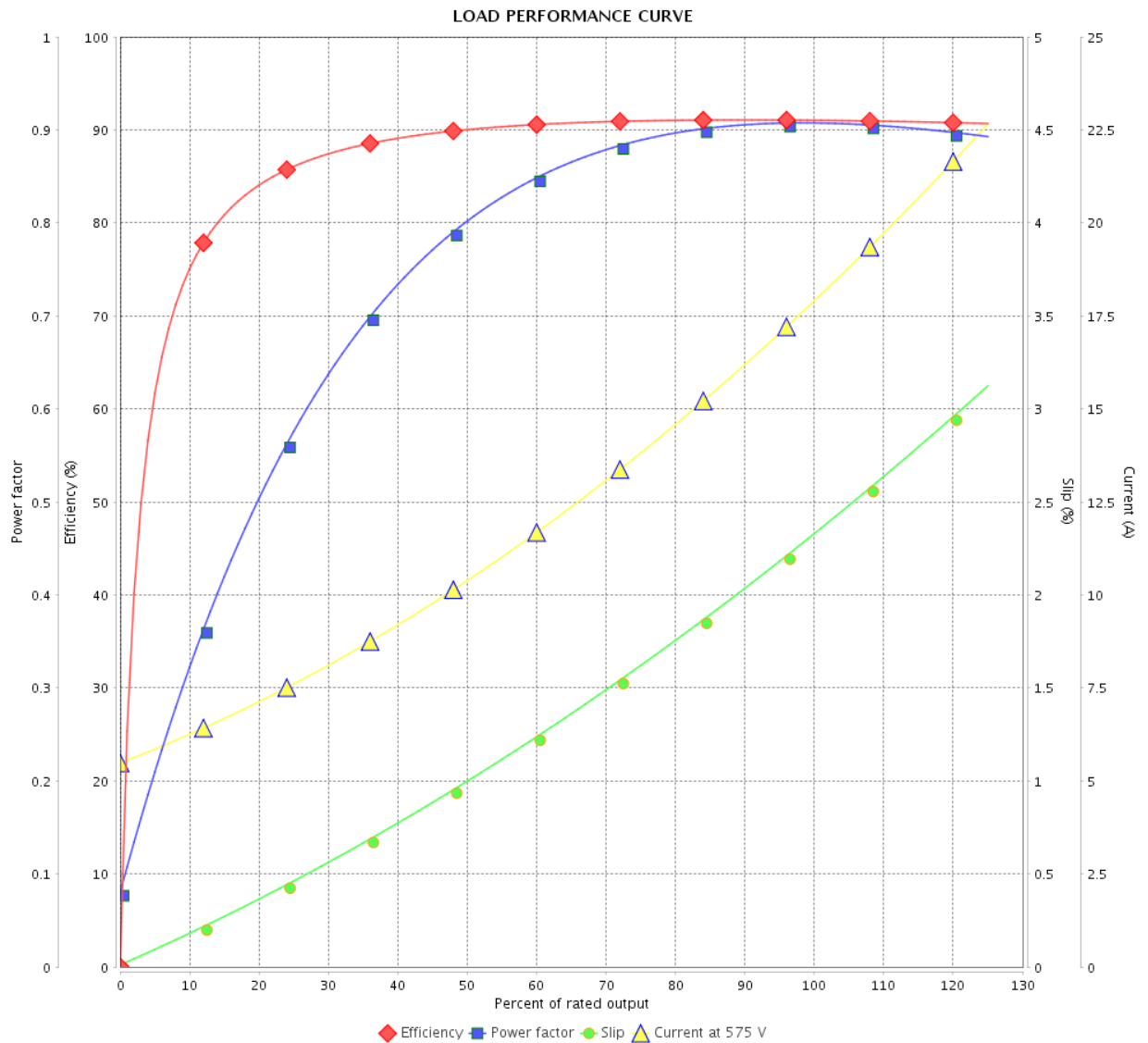


Customer :

Product line : JM Pump NEMA Premium
Efficiency Three-Phase

Product code : 14391674

Catalog # : 02036ET3H256JM-SG



Performance : 575 V 60 Hz 2P

Rated current : 18.2 A
 LRC : 6.6
 Rated torque : 29.9 ft.lb
 Locked rotor torque : 200 %
 Breakdown torque : 290 %
 Rated speed : 3515 rpm

Moment of inertia (J) : 1.22 sq.ft.lb
 Duty cycle : Cont.(S1)
 Insulation class : F
 Service factor : 1.15
 Temperature rise : 80 K
 Design : B

Rev.	Changes Summary	Performed	Checked	Date
Performed by		Page		Revision
Checked by		3 / 6		
Date		14/04/2022		

THERMAL LIMIT CURVE



Three Phase Induction Motor - Squirrel Cage

Customer :

Product line : JM Pump NEMA Premium
Efficiency Three-Phase

Product code : 14391674

Catalog # : 02036ET3H256JM-SG

Performance : 575 V 60 Hz 2P

Rated current	: 18.2 A	Moment of inertia (J)	: 1.22 sq.ft.lb
LRC	: 6.6	Duty cycle	: Cont.(S1)
Rated torque	: 29.9 ft.lb	Insulation class	: F
Locked rotor torque	: 200 %	Service factor	: 1.15
Breakdown torque	: 290 %	Temperature rise	: 80 K
Rated speed	: 3515 rpm	Design	: B

Heating constant

Cooling constant

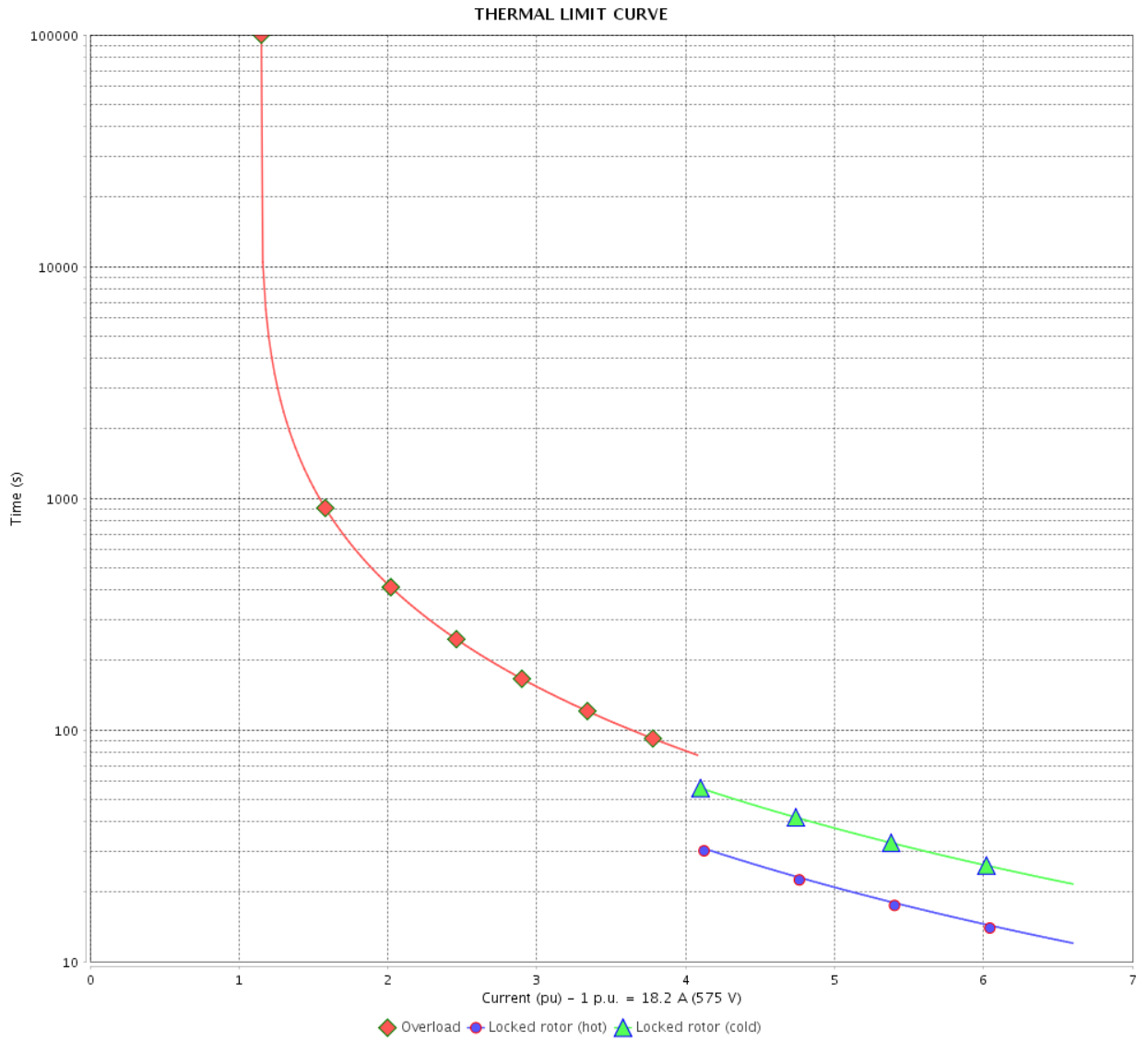
Rev.	Changes Summary	Performed	Checked	Date
Performed by				
Checked by			Page	Revision
Date	14/04/2022		4 / 6	

THERMAL LIMIT CURVE

Three Phase Induction Motor - Squirrel Cage



Customer : _____



Rev.	Changes Summary	Performed	Checked	Date
Performed by		Page 5 / 6		Revision
Checked by				
Date				

VFD OPERATION CURVE

Three Phase Induction Motor - Squirrel Cage



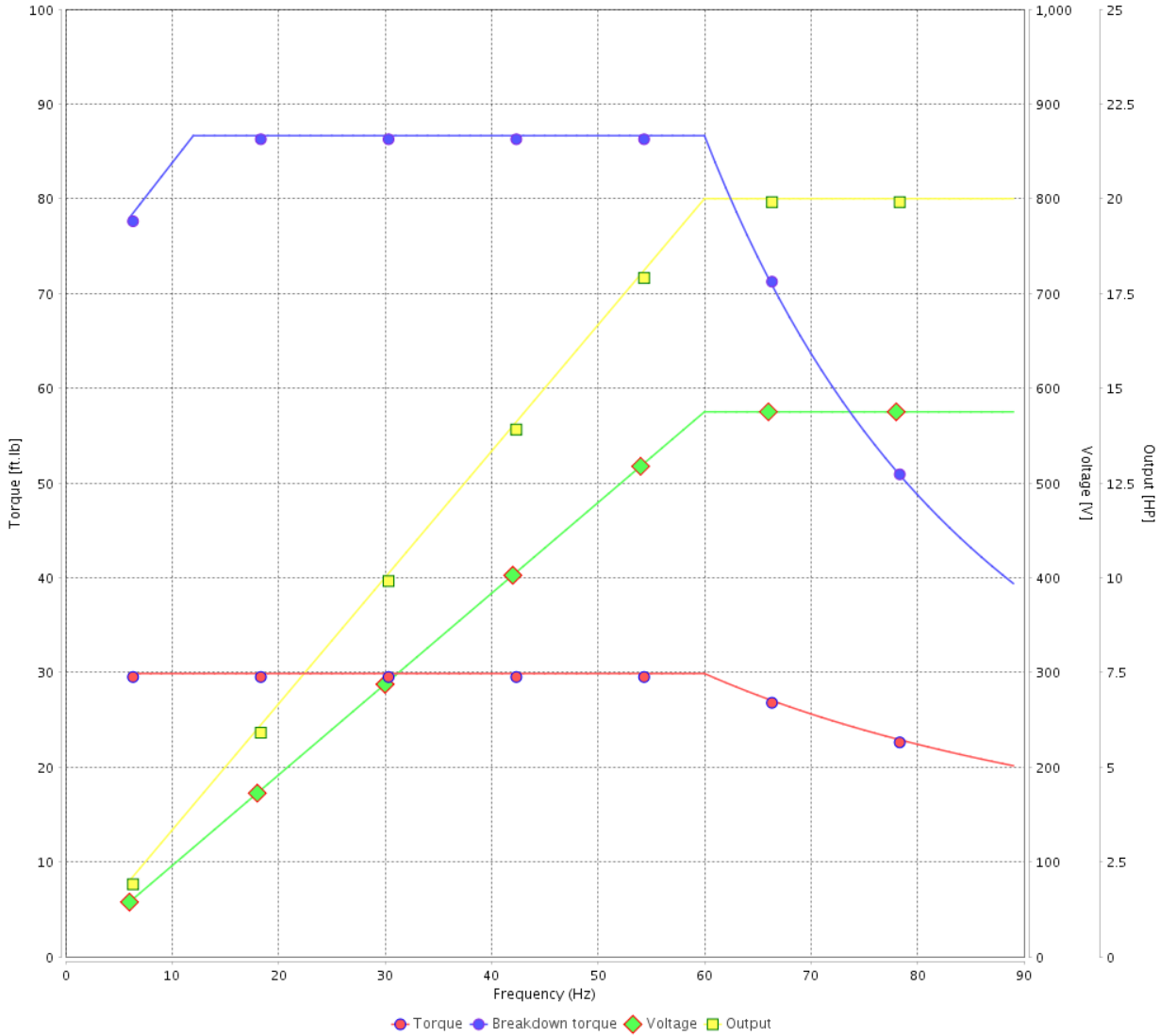
Customer :

Product line : JM Pump NEMA Premium Efficiency Three-Phase

Product code : 14391674

Catalog # : 02036ET3H256JM-SG

VFD OPERATION CURVE



Performance : 575 V 60 Hz 2P

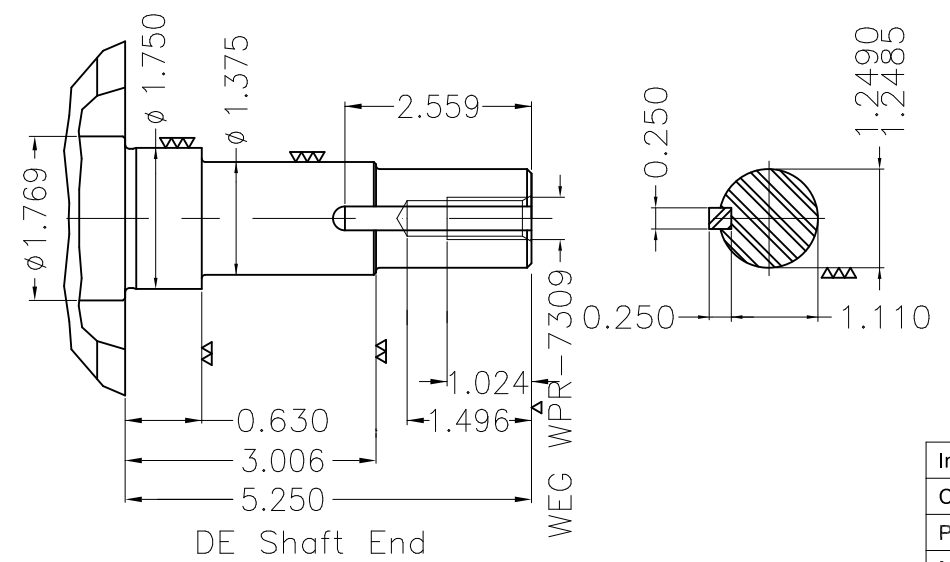
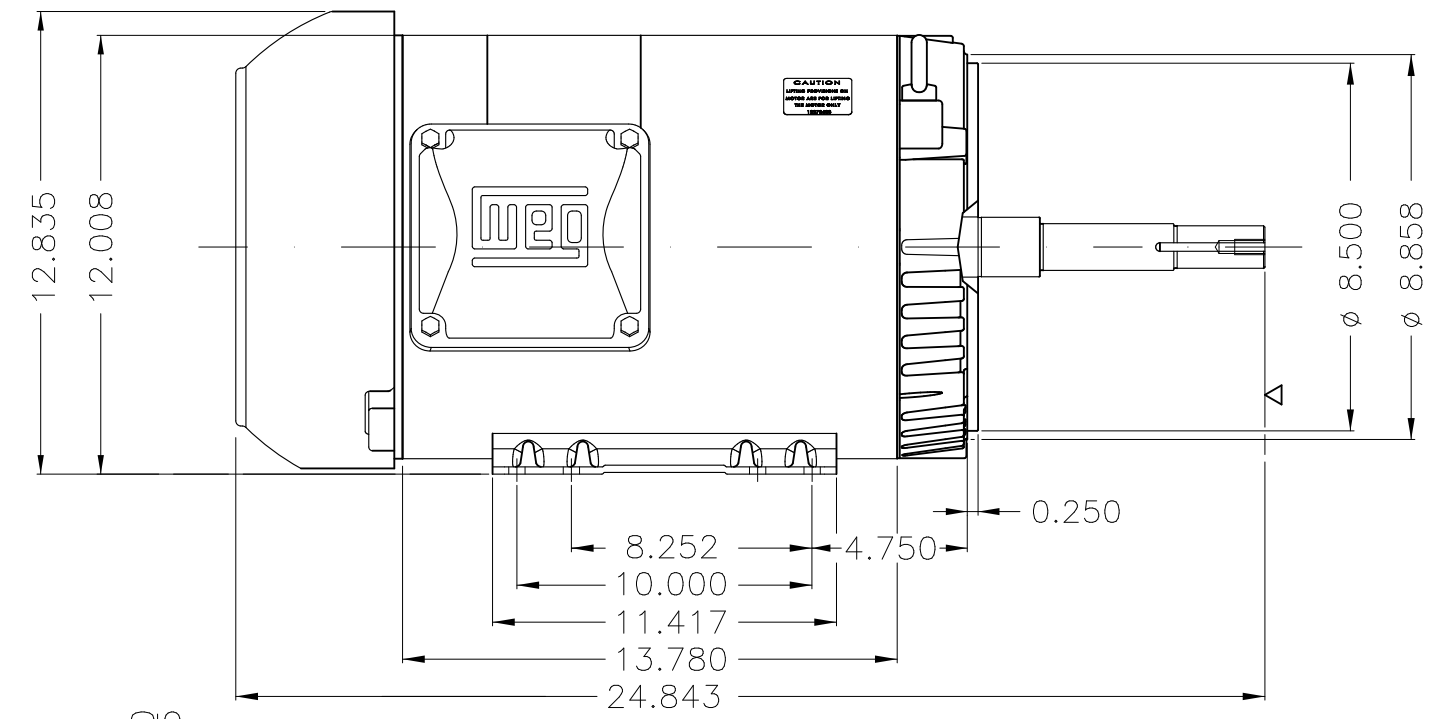
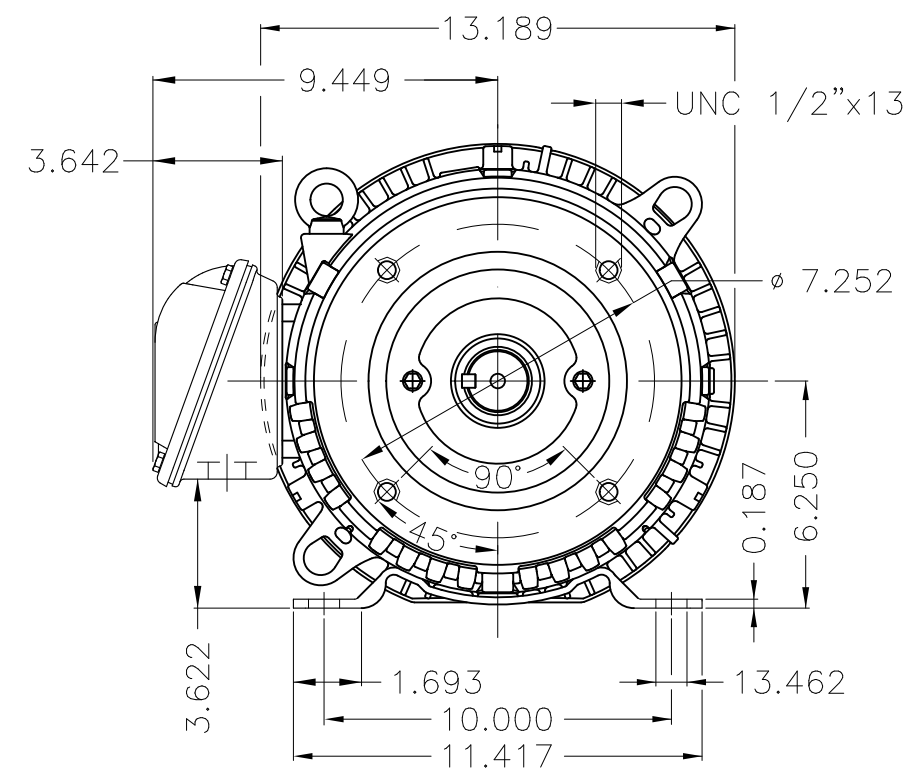
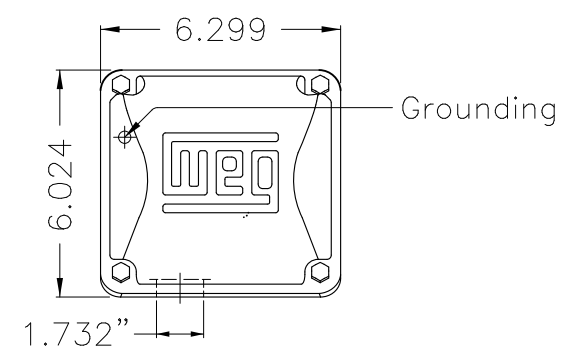
Rated current : 18.2 A
 LRC : 6.6
 Rated torque : 29.9 ft.lb
 Locked rotor torque : 200 %
 Breakdown torque : 290 %
 Rated speed : 3515 rpm

Moment of inertia (J) : 1.22 sq.ft.lb
 Duty cycle : Cont.(S1)
 Insulation class : F
 Service factor : 1.15
 Temperature rise : 80 K
 Design : B

Rev.	Changes Summary	Performed	Checked	Date
Performed by			Page 6 / 6	Revision
Checked by				
Date	14/04/2022			

1 2 3 4 5 6

A
B
C
D
E



EUNC 1/2"-13 WEG WPR-7309

DE Shaft End

Internal AEGIS ground ring on the DE
 Color Munsell N 1 matte black
 Painting plan 207N
 Mounting F-1/B34R(D)

ECM	LOC	SUMMARY OF MODIFICATIONS	EXECUTED	CHECKED	RELEASED	DATE	VER
EXECUTED	PIRBUSER	THREE PH. MOTOR ROLLED STEEL CLOSE COUPLED PUMP JN TYPE PSE 1/2"					
CHECKED		FRAME 254/6JM IP55 TEFC					
RELEASED							
REL DT.		WMO Jaragua do Sul	Product Engineering	WDD	SHEET	1 / 1	

20 HP 02 Poles 60 Hz

