

TORQUE AND CURRENT VS SPEED CURVE

Three Phase Induction Motor - Squirrel Cage



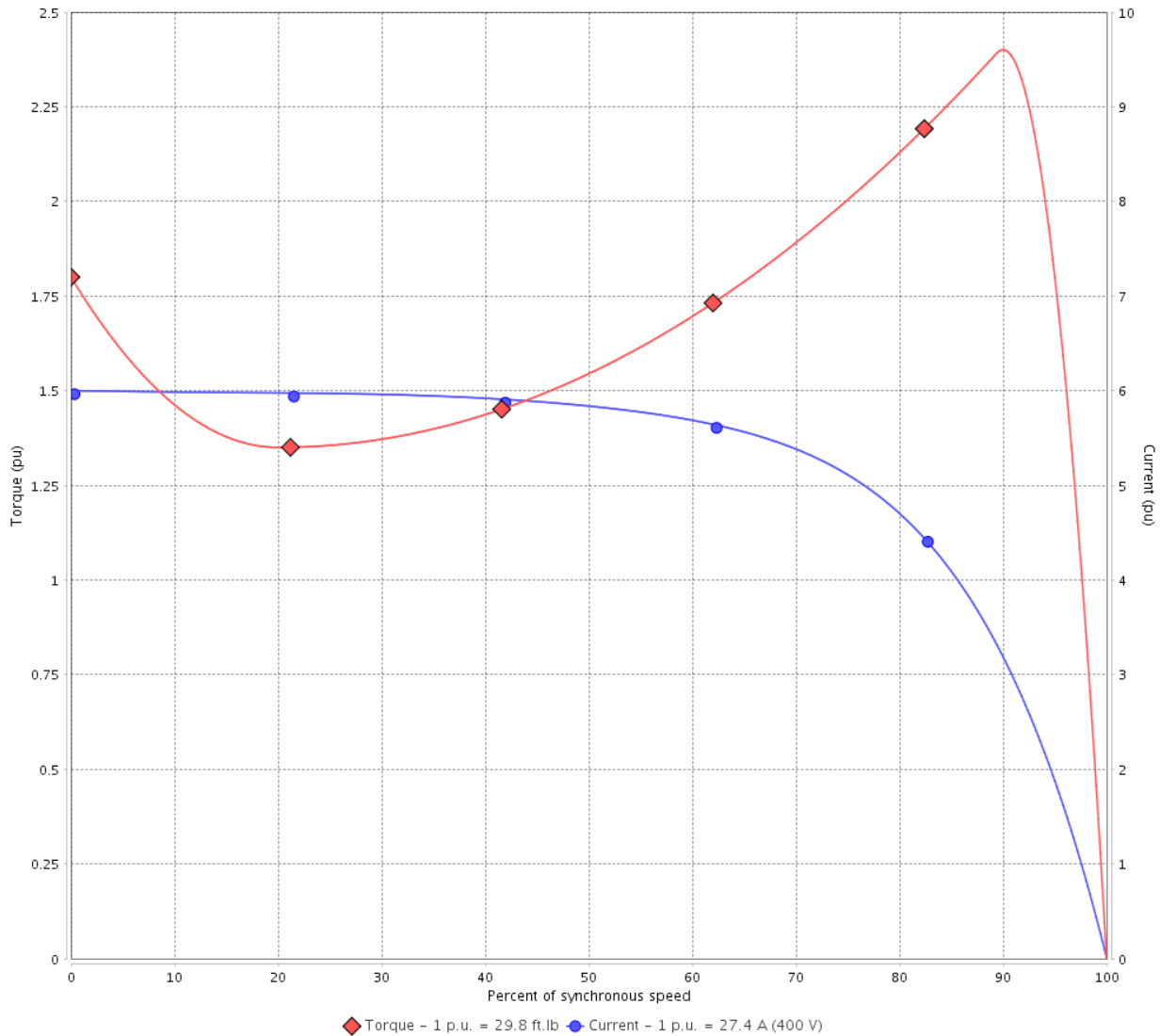
Customer :

Product line : JP Pump NEMA Premium
Efficiency Three-Phase

Product code : 13482998

Catalog # : 02036OT3V254JP-S

TORQUE AND CURRENT VS SPEED CURVE



Performance : 200/400 V 60 Hz 2P

Rated current : 54.7/27.4 A
LRC : 6.0
Rated torque : 29.8 ft.lb
Locked rotor torque : 180 %
Breakdown torque : 240 %
Rated speed : 3525 rpm

Moment of inertia (J) : 0.7848 sq.ft.lb
Duty cycle : Cont.(S1)
Insulation class : F
Service factor : 1.15
Temperature rise : 80 K
Design : B

Locked rotor time : 23s (cold) 13s (hot)

Rev.	Changes Summary	Performed	Checked	Date
Performed by			Page 2 / 6	Revision
Checked by				
Date	14/04/2022			

LOAD PERFORMANCE CURVE

Three Phase Induction Motor - Squirrel Cage

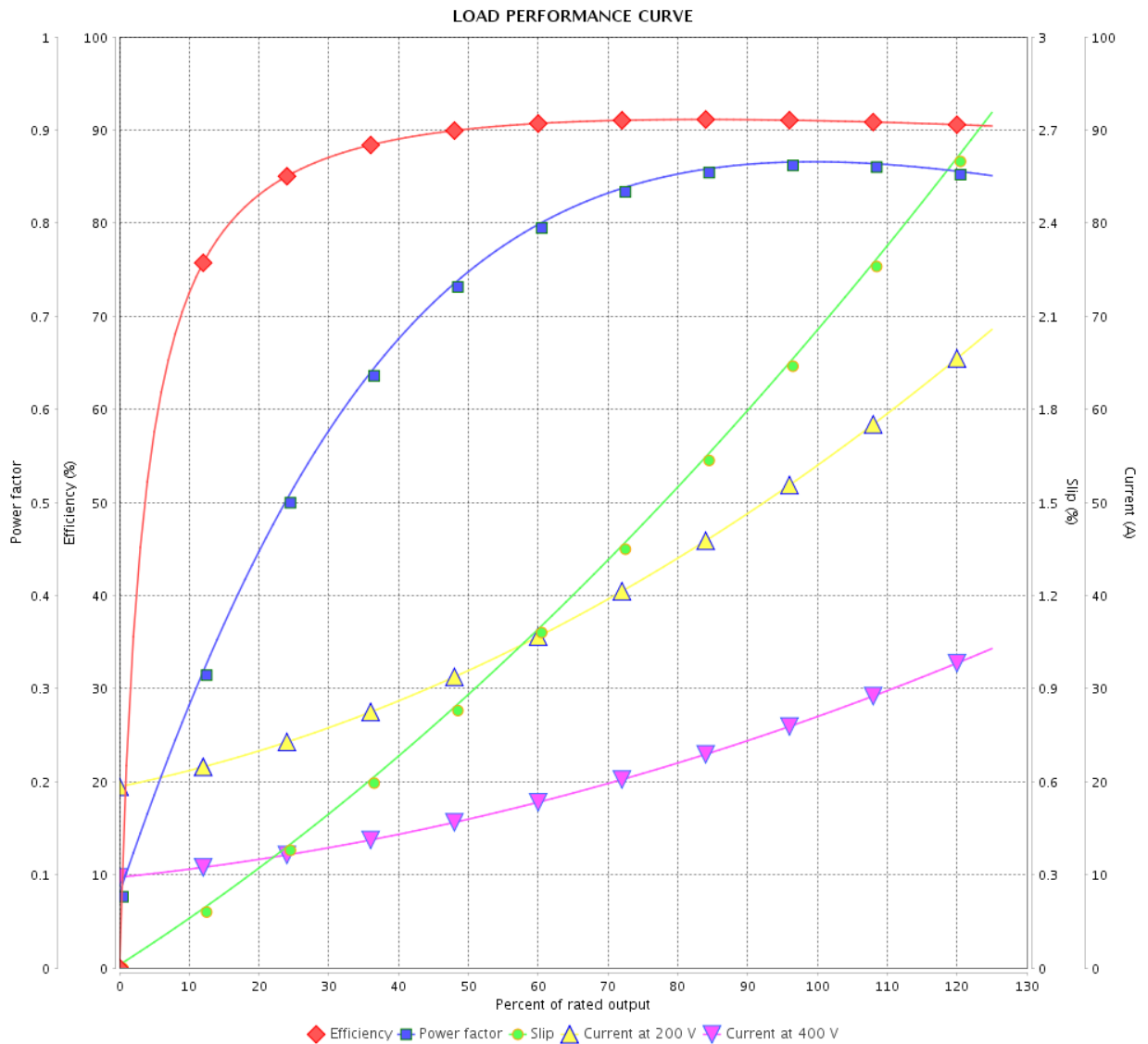


Customer :

Product line : JP Pump NEMA Premium
Efficiency Three-Phase

Product code : 13482998

Catalog # : 02036OT3V254JP-S



Performance : 200/400 V 60 Hz 2P

Rated current : 54.7/27.4 A
 LRC : 6.0
 Rated torque : 29.8 ft.lb
 Locked rotor torque : 180 %
 Breakdown torque : 240 %
 Rated speed : 3525 rpm

Moment of inertia (J) : 0.7848 sq.ft.lb
 Duty cycle : Cont.(S1)
 Insulation class : F
 Service factor : 1.15
 Temperature rise : 80 K
 Design : B

Rev.	Changes Summary	Performed	Checked	Date
Performed by		Page		Revision
Checked by		3 / 6		
Date		14/04/2022		

THERMAL LIMIT CURVE



Three Phase Induction Motor - Squirrel Cage

Customer :

Product line : JP Pump NEMA Premium
Efficiency Three-Phase

Product code : 13482998

Catalog # : 02036OT3V254JP-S

Performance : 200/400 V 60 Hz 2P

Rated current : 54.7/27.4 A
LRC : 6.0
Rated torque : 29.8 ft.lb
Locked rotor torque : 180 %
Breakdown torque : 240 %
Rated speed : 3525 rpm

Moment of inertia (J) : 0.7848 sq.ft.lb
Duty cycle : Cont.(S1)
Insulation class : F
Service factor : 1.15
Temperature rise : 80 K
Design : B

Heating constant

Cooling constant

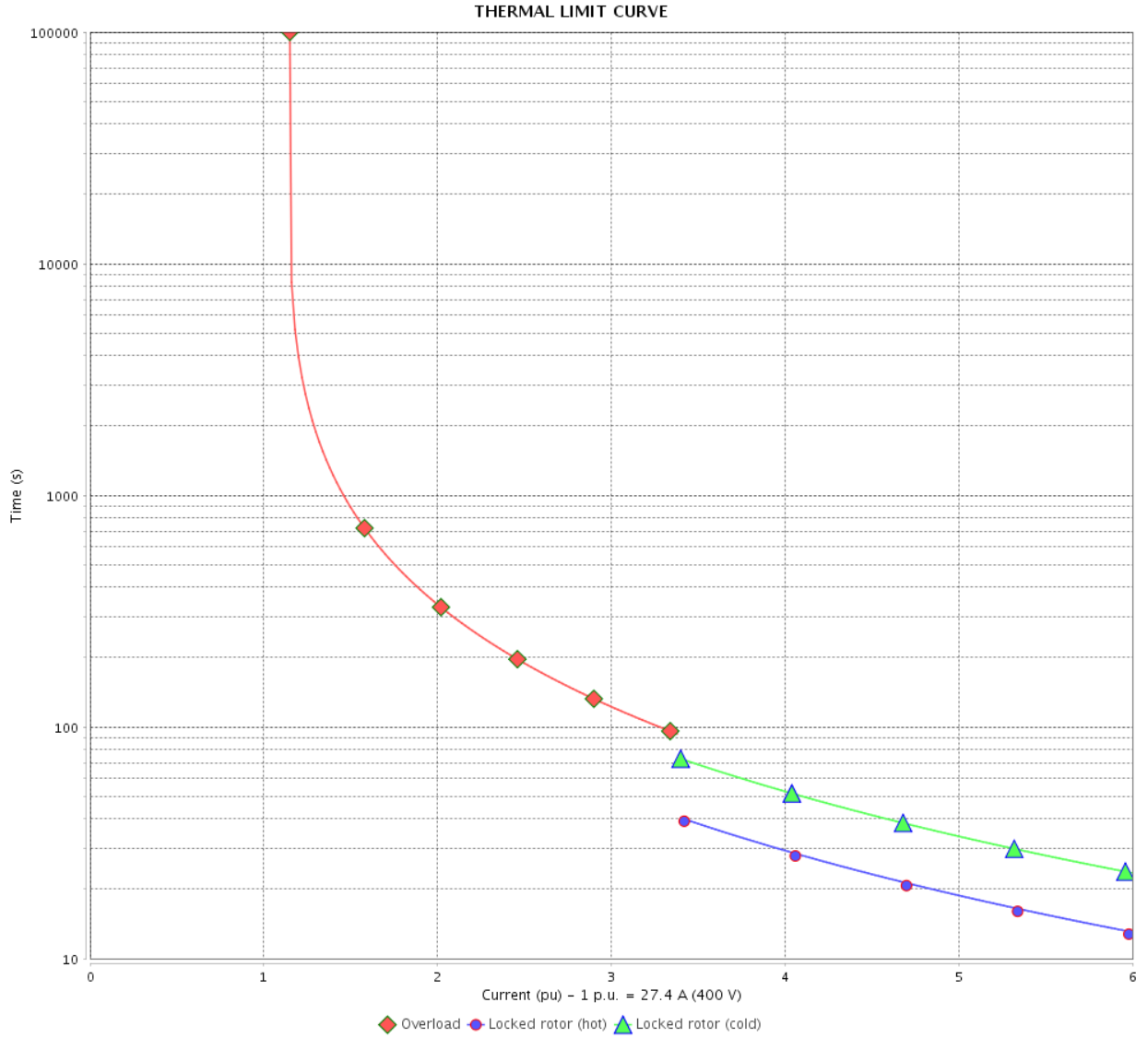
Rev.	Changes Summary	Performed	Checked	Date
Performed by				
Checked by			Page	Revision
Date	14/04/2022		4 / 6	

THERMAL LIMIT CURVE

Three Phase Induction Motor - Squirrel Cage



Customer : _____



Rev.	Changes Summary	Performed	Checked	Date
Performed by		Page 5 / 6		Revision
Checked by				
Date				

VFD OPERATION CURVE

Three Phase Induction Motor - Squirrel Cage

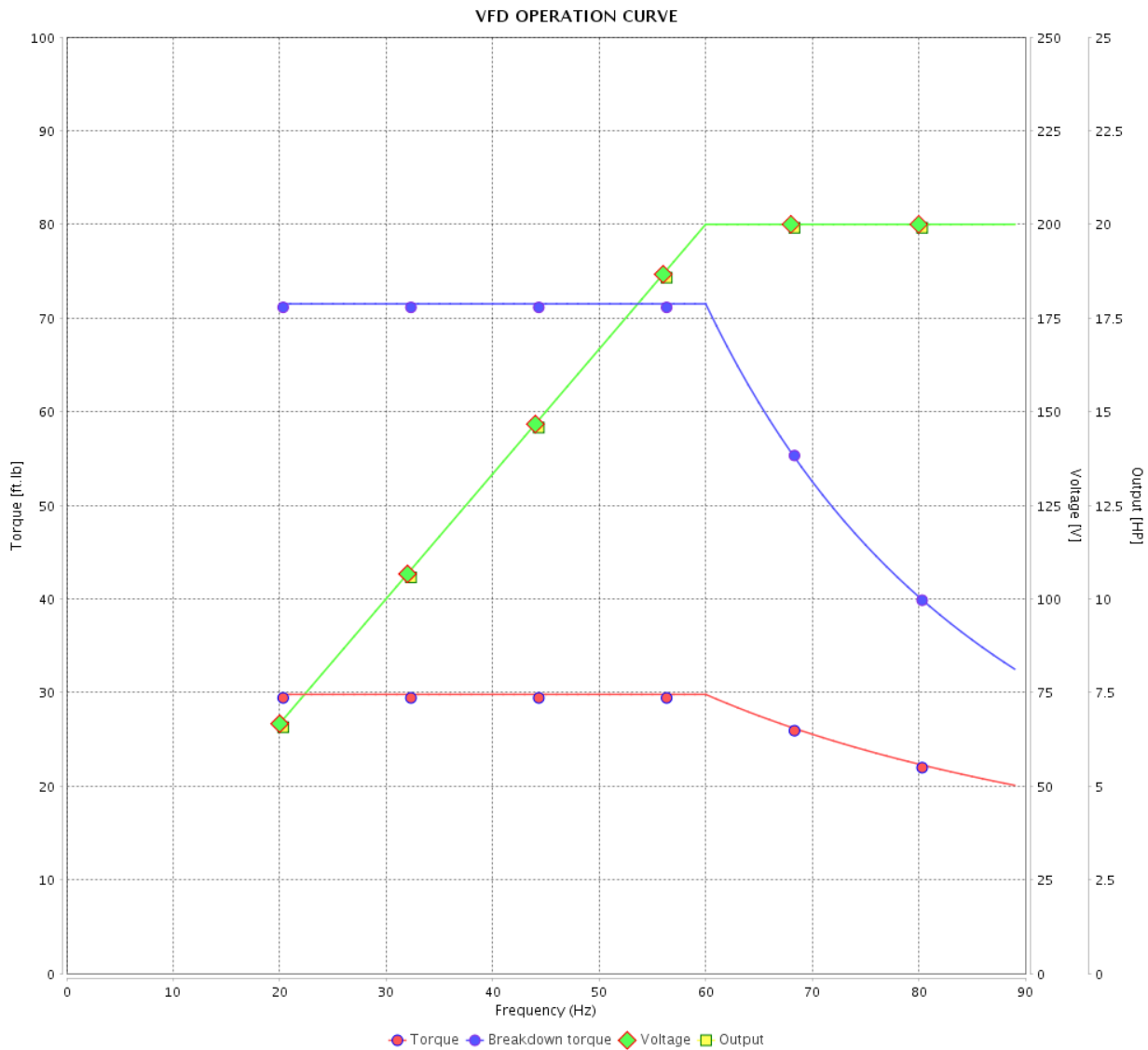


Customer :

Product line : JP Pump NEMA Premium Efficiency Three-Phase

Product code : 13482998

Catalog # : 02036OT3V254JP-S



Performance : 200/400 V 60 Hz 2P

Rated current : 54.7/27.4 A
 LRC : 6.0
 Rated torque : 29.8 ft.lb
 Locked rotor torque : 180 %
 Breakdown torque : 240 %
 Rated speed : 3525 rpm

Moment of inertia (J) : 0.7848 sq.ft.lb
 Duty cycle : Cont.(S1)
 Insulation class : F
 Service factor : 1.15
 Temperature rise : 80 K
 Design : B

Rev.	Changes Summary	Performed	Checked	Date
Performed by			Page 6 / 6	Revision
Checked by				
Date	14/04/2022			

1 2 3 4 5 6

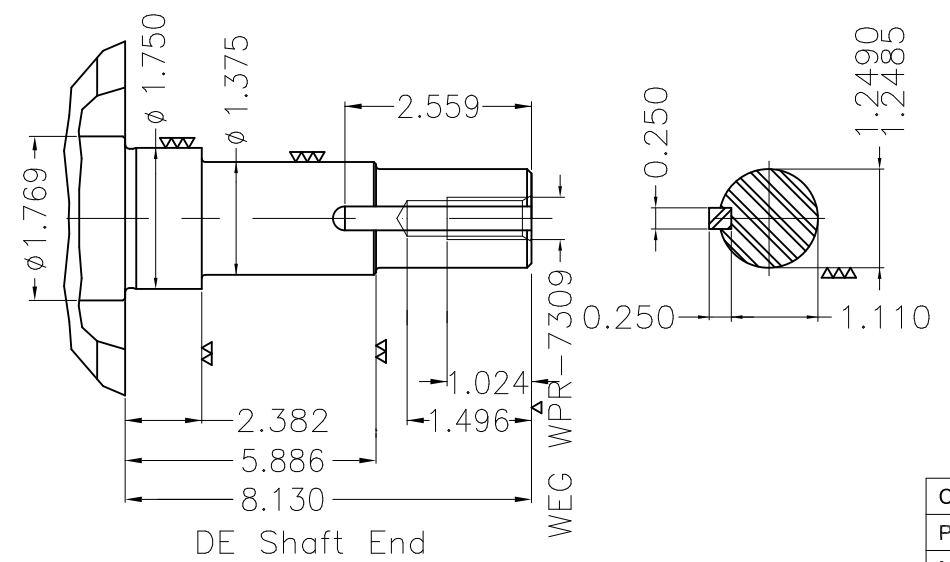
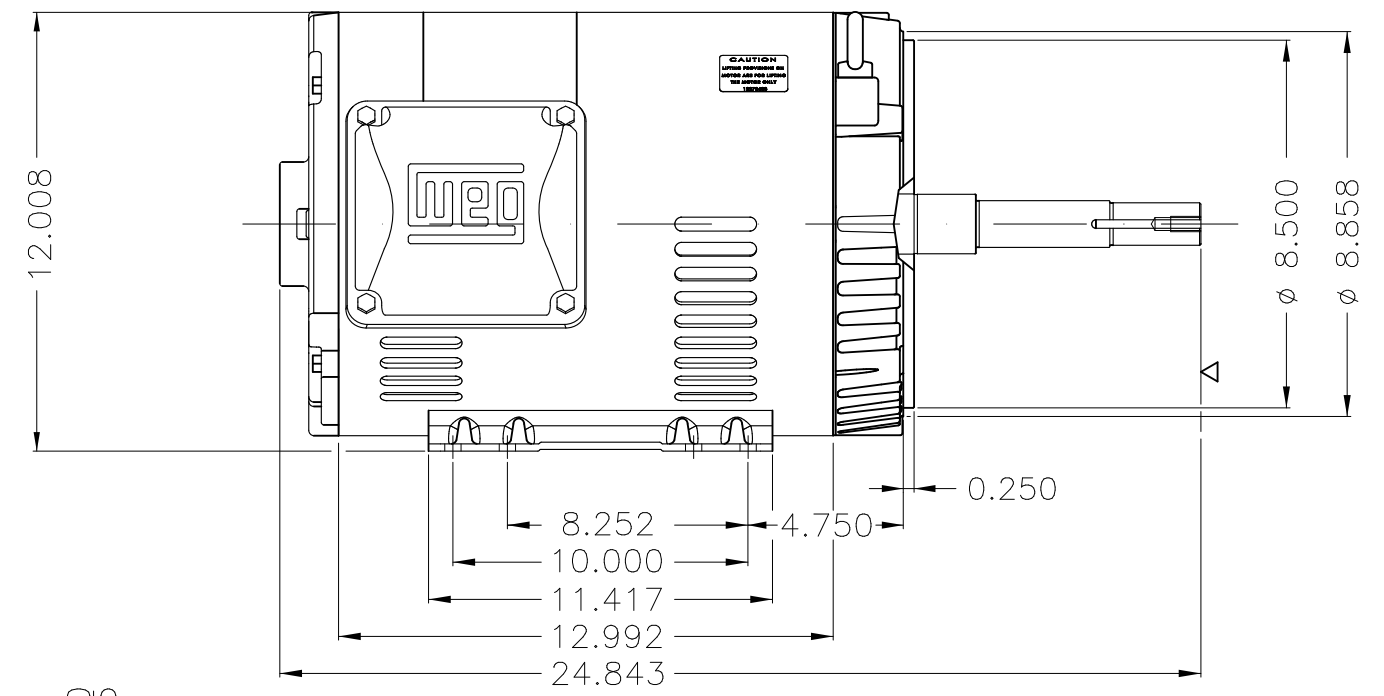
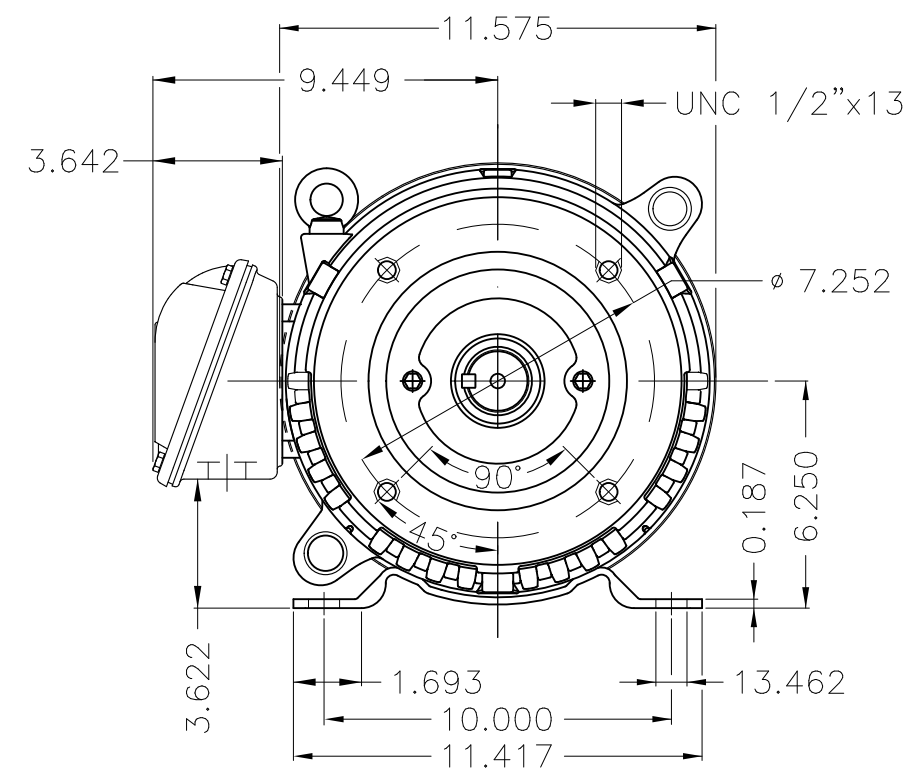
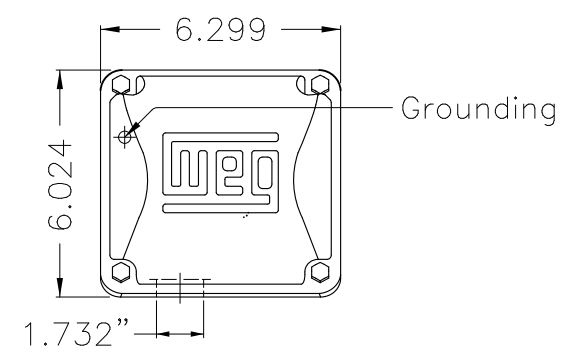
A

B

C

D

E



EUNC 1/2"-13 WEG WPR-7309

DE Shaft End

Color Munsell N 1 matte black
 Painting plan 207N
 Mounting F-1/B34R(D)

ECM	LOC	SUMMARY OF MODIFICATIONS	EXECUTED	CHECKED	RELEASED	DATE	VER
EXECUTED	PIRBUSER	THREE PH. MOTOR ROLLED STEEL CLOSE COUPLED PUMP JP 3/4" DE PRELIM					
CHECKED		FRAME 254/6JP IP21 ODP					
RELEASED							
REL DT.	WMO	Jaragua do Sul	Product Engineering	WDD	SHEET	1 / 1	

20 HP 02 Poles 60 Hz



WEG
NEMA
Premium

MADE IN MEXICO

MAT: 13482998 CC029A

W01.T00IC0X0N

MODEL 020360T3V254JP-S

22ABR2019 S/N:

PH 3 FR 254/6JP |HP(kw) 20(15) |Hz 60

V 200/400

RPM 3525

A 54.7/27.4

DUTY CONT.

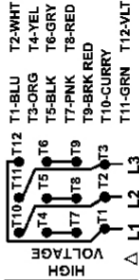
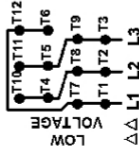
SFA 62.9/31.5

CODE G

SF 1.15 |INS CL F ΔT 80K |AMB 40°C |ENCL ODP

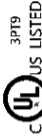
ALT 1000 m.a.s.l. |NEMA NOM.EFF. 91.0% |PF 0.87

ALTERNATE RATING:



INTERCHANGE ANY TWO LINE WIRES TO REVERSE THE ROTATION

Inverter duty For use on VPWM 1000:1 VT, 3:1 CT

DE: 6309-Z-C3 ODE: 6208-Z-C3 MOBIL POLYREX EM 20000h**WARNING:** Motor must be grounded in accordance with local and national electrical codes to prevent serious electrical shocks. Disconnect power source before servicing unit.**AVERTISSEMENT:** Le moteur doit être mis à la terre conformément aux codes électriques locaux et nationaux afin d'éviter tout choc électrique grave. Déconnectez l'alimentation avant l'entretien de la machine.

3PT9

US LISTED



Energy Verified