

TORQUE AND CURRENT VS SPEED CURVE

Three Phase Induction Motor - Squirrel Cage



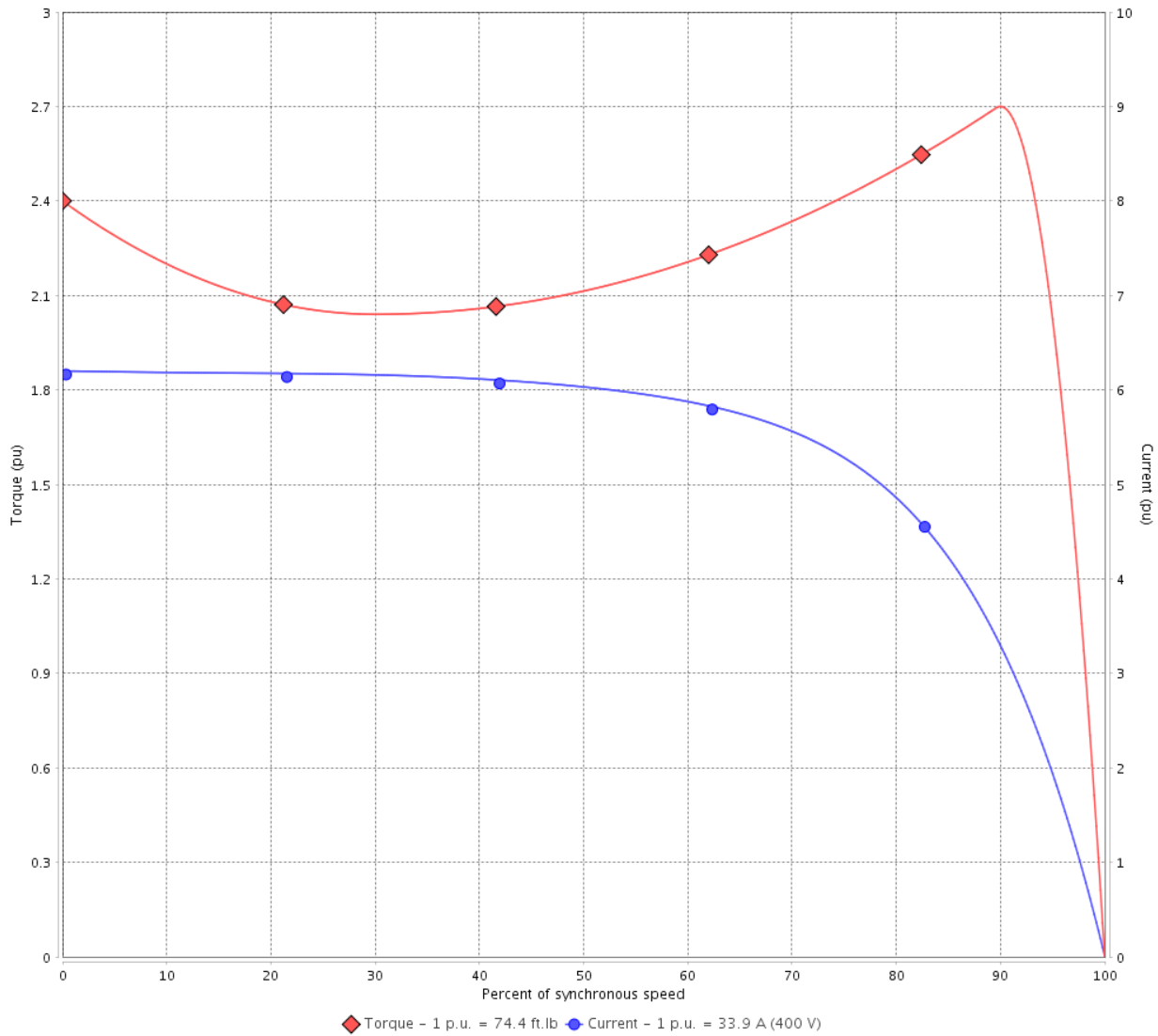
Customer :

Product line : NEMA Premium Efficiency Three-Phase

Product code : 12807285

Catalog # : 02518ET3V284T-W22G

TORQUE AND CURRENT VS SPEED CURVE



Performance : 200/400 V 60 Hz 4P

Rated current	: 67.8/33.9 A	Moment of inertia (J)	: 5.11 sq.ft.lb
LRC	: 6.2	Duty cycle	: Cont.(S1)
Rated torque	: 74.4 ft.lb	Insulation class	: F
Locked rotor torque	: 240 %	Service factor	: 1.25
Breakdown torque	: 270 %	Temperature rise	: 80 K
Rated speed	: 1765 rpm	Design	: B

Locked rotor time : 43s (cold) 24s (hot)

Rev.	Changes Summary	Performed	Checked	Date
Performed by			Page 2 / 6	Revision
Checked by				
Date	14/04/2022			

LOAD PERFORMANCE CURVE

Three Phase Induction Motor - Squirrel Cage

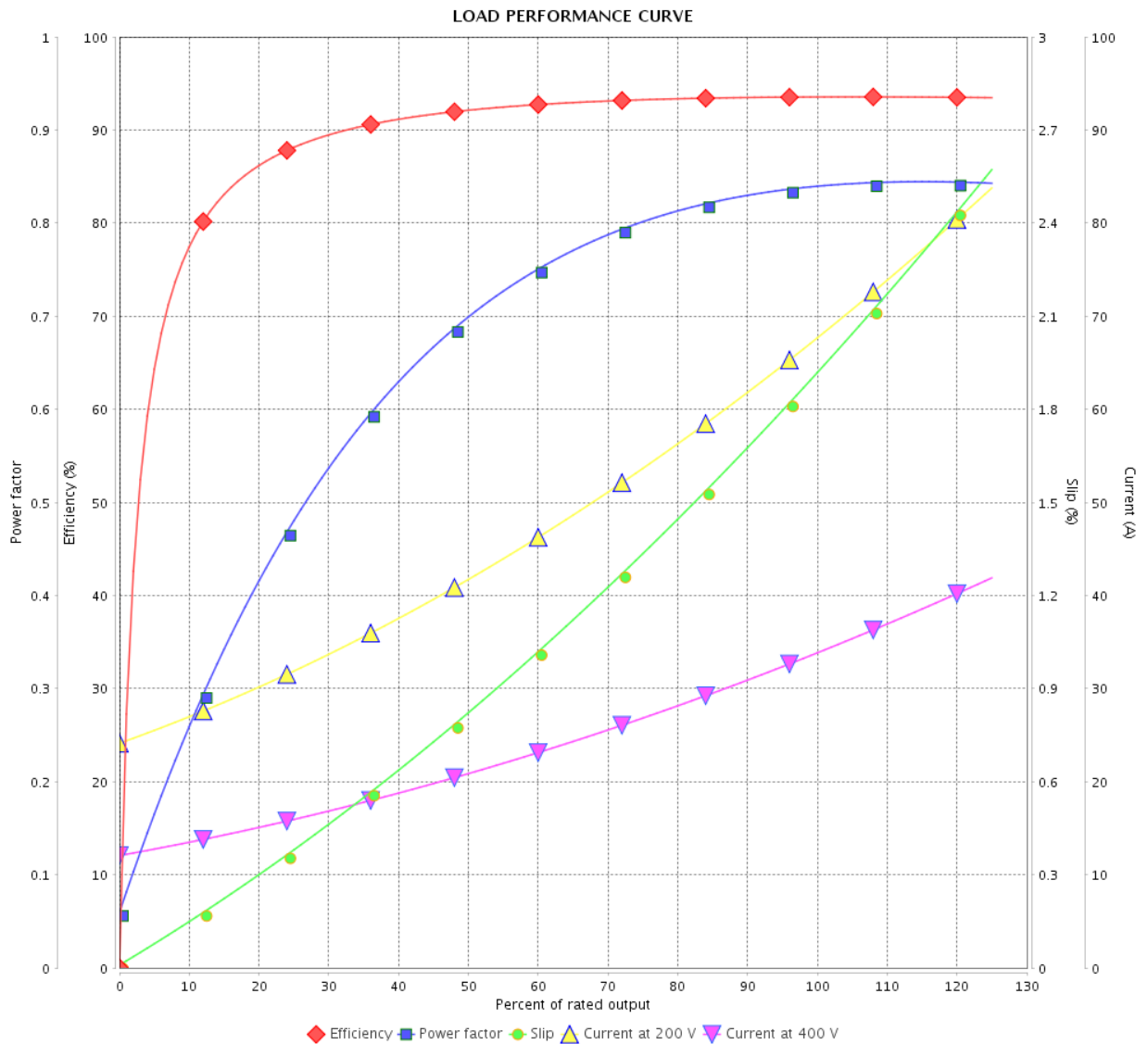


Customer :

Product line : NEMA Premium Efficiency Three-Phase

Product code : 12807285

Catalog # : 02518ET3V284T-W22G



Performance : 200/400 V 60 Hz 4P

Rated current : 67.8/33.9 A
 LRC : 6.2
 Rated torque : 74.4 ft.lb
 Locked rotor torque : 240 %
 Breakdown torque : 270 %
 Rated speed : 1765 rpm

Moment of inertia (J) : 5.11 sq.ft.lb
 Duty cycle : Cont.(S1)
 Insulation class : F
 Service factor : 1.25
 Temperature rise : 80 K
 Design : B

Rev.	Changes Summary	Performed	Checked	Date
Performed by			Page	Revision
Checked by				
Date				

THERMAL LIMIT CURVE



Three Phase Induction Motor - Squirrel Cage

Customer :

Product line : NEMA Premium Efficiency Three-Phase
Product code : 12807285
Catalog # : 02518ET3V284T-W22G

Performance : 200/400 V 60 Hz 4P

Rated current	: 67.8/33.9 A	Moment of inertia (J)	: 5.11 sq.ft.lb
LRC	: 6.2	Duty cycle	: Cont.(S1)
Rated torque	: 74.4 ft.lb	Insulation class	: F
Locked rotor torque	: 240 %	Service factor	: 1.25
Breakdown torque	: 270 %	Temperature rise	: 80 K
Rated speed	: 1765 rpm	Design	: B

Heating constant

Cooling constant

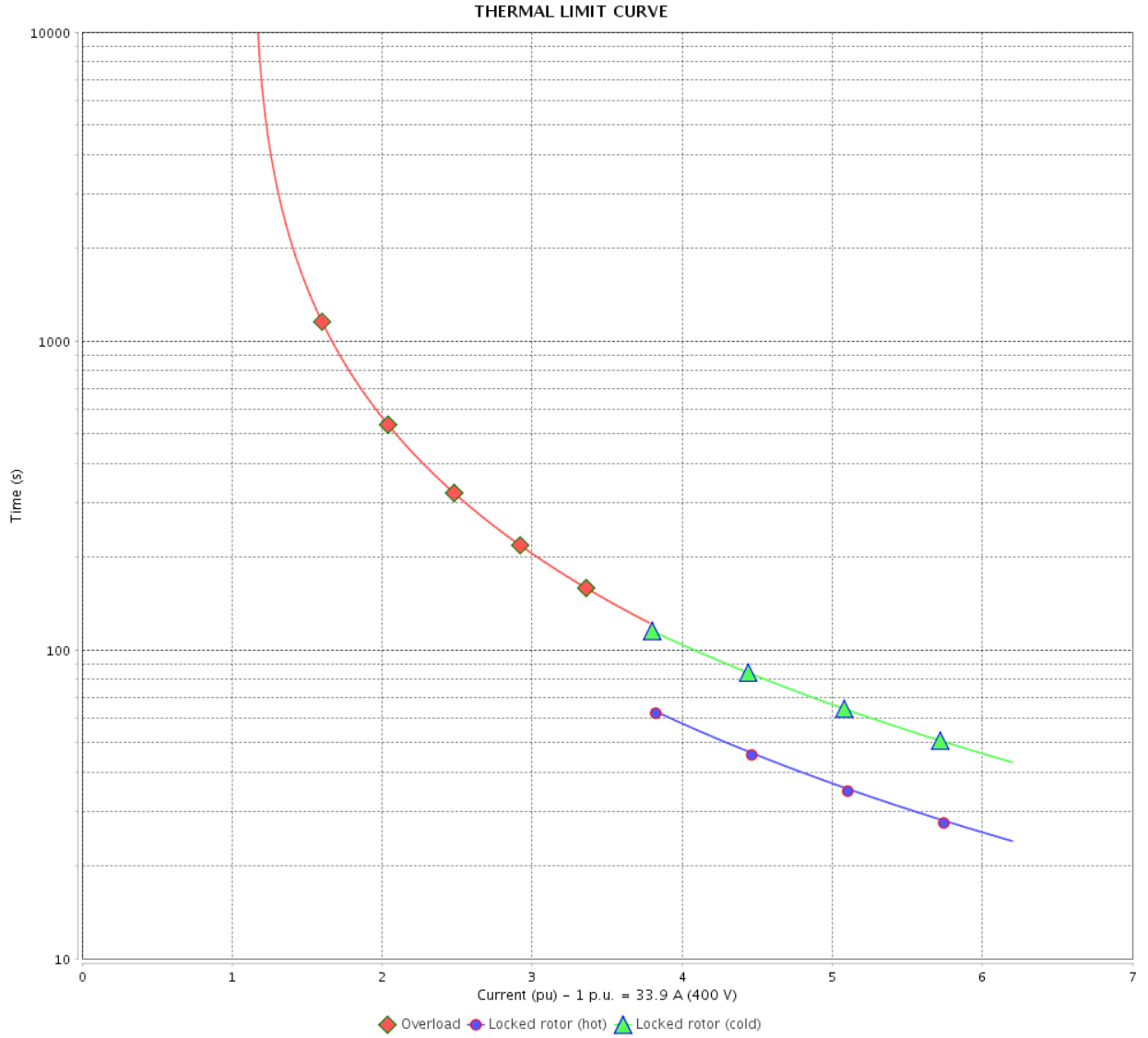
Rev.	Changes Summary	Performed	Checked	Date
Performed by				
Checked by			Page	Revision
Date	14/04/2022		4 / 6	

THERMAL LIMIT CURVE

Three Phase Induction Motor - Squirrel Cage



Customer : _____



Rev.	Changes Summary	Performed	Checked	Date
Performed by		Page		Revision
Checked by				
Date				

VFD OPERATION CURVE

Three Phase Induction Motor - Squirrel Cage



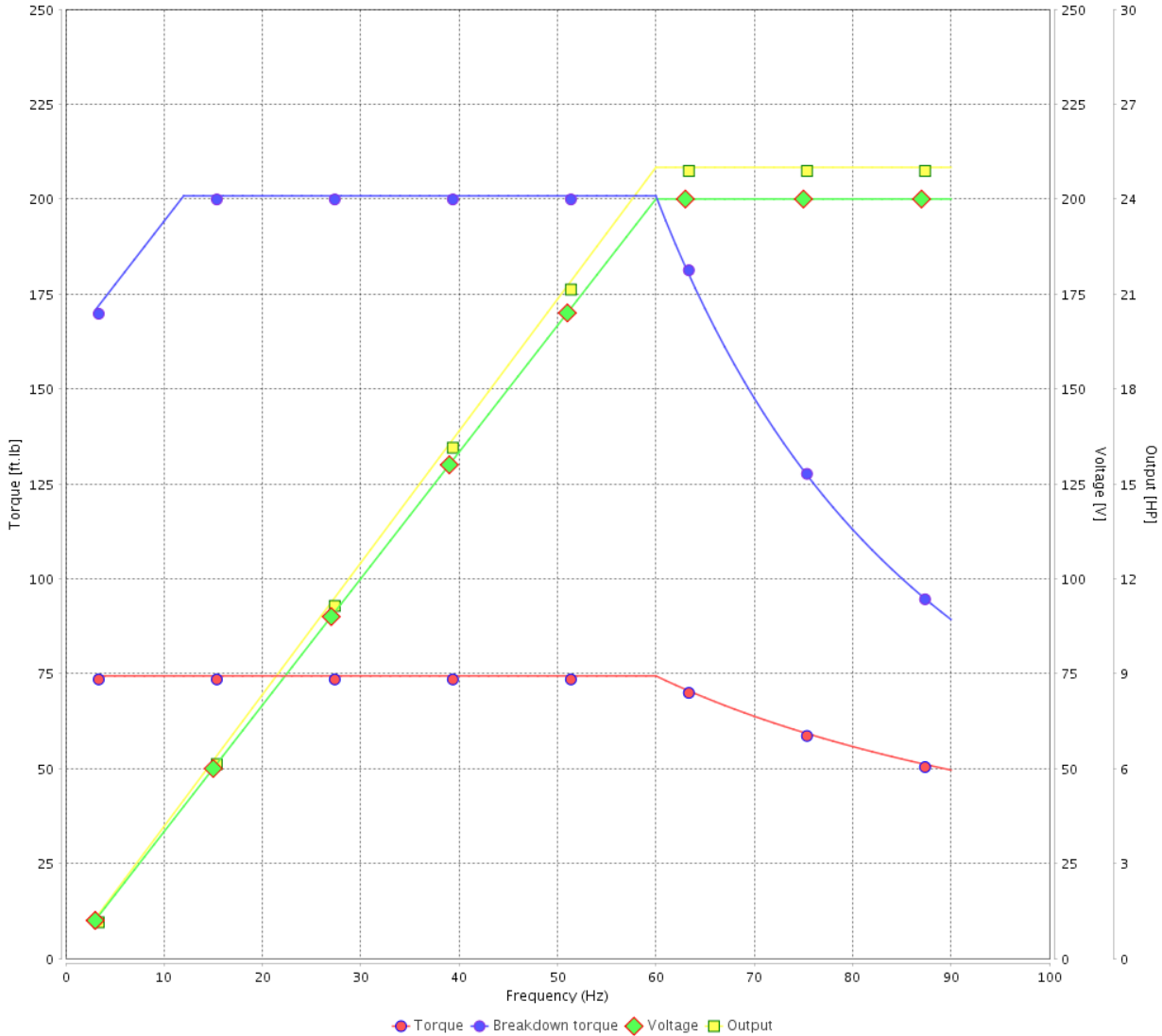
Customer :

Product line : NEMA Premium Efficiency Three-Phase

Product code : 12807285

Catalog # : 02518ET3V284T-W22G

VFD OPERATION CURVE



Performance : 200/400 V 60 Hz 4P

Rated current : 67.8/33.9 A
 LRC : 6.2
 Rated torque : 74.4 ft.lb
 Locked rotor torque : 240 %
 Breakdown torque : 270 %
 Rated speed : 1765 rpm

Moment of inertia (J) : 5.11 sq.ft.lb
 Duty cycle : Cont.(S1)
 Insulation class : F
 Service factor : 1.25
 Temperature rise : 80 K
 Design : B

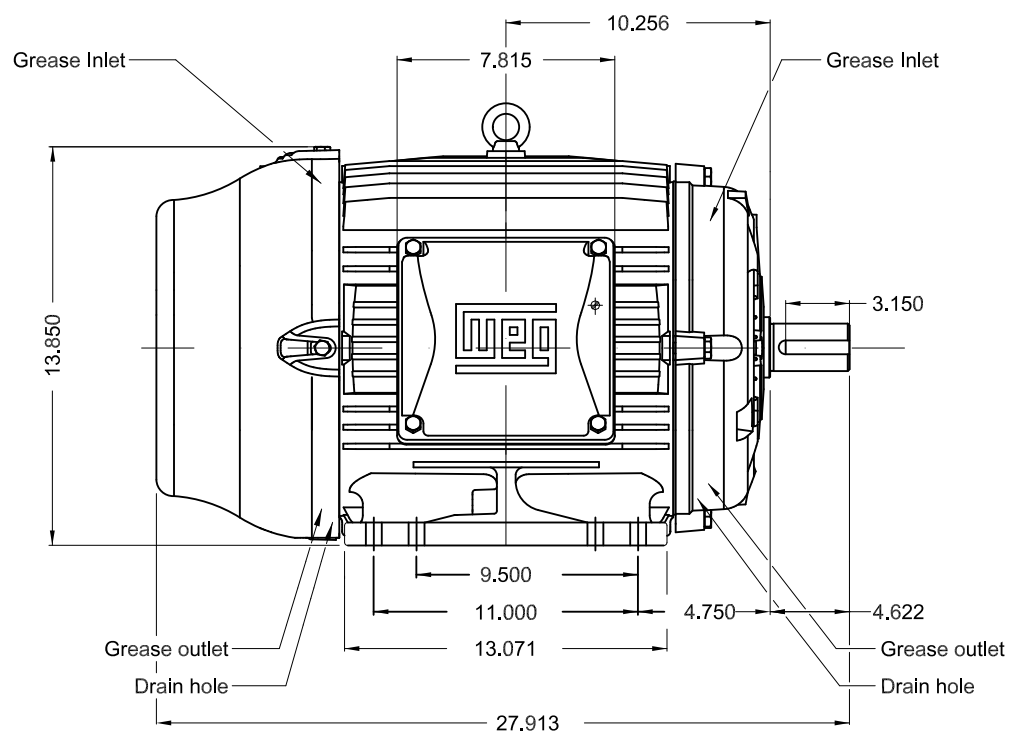
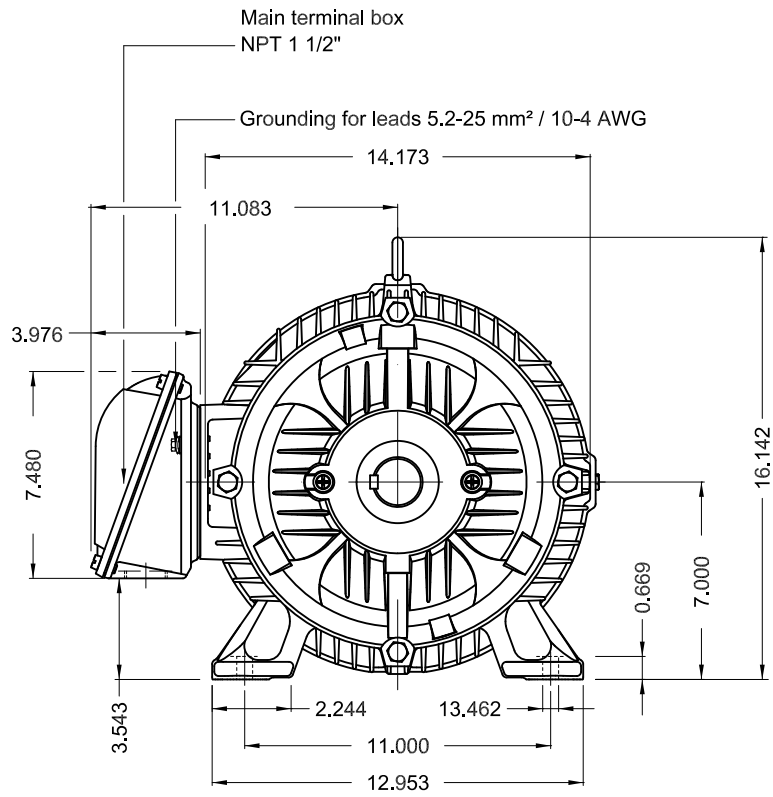
Rev.	Changes Summary	Performed	Checked	Date
Performed by			Page 6 / 6	Revision
Checked by				
Date	14/04/2022			

1 2 3 4 5 6

A

B

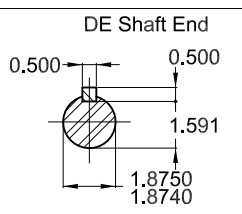
C



D

E

Internal AEGIS ground ring on the DE
 Color RAL 5009
 Painting plan 203A
 Mounting NEMA F-1
 Mounting B3R(D)



25 HP 04 Poles 60 Hz A

ECM	LOC	SUMMARY OF MODIFICATIONS	EXECUTED	CHECKED	RELEASED	DATE	VER
EXECUTED	PIRWBUSER	THREE PH. MOTOR W22 PREM. EFF.					
CHECKED		FRAME 284/6T IP55 TEFC					
RELEASED							
REL DT.	WMO	Jaragua do Sul	Product Engineering	SHEET	1 / 1		

PREVIEW
 WDD



MODEL 02518ET3V284T-W22G
MADE IN BRAZIL
12807285



*Inverter Duty Motor
Severe Duty*

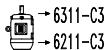
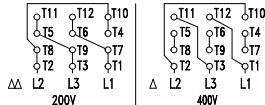


MOD.TE1BFOXON



For use on PWM, VT 1000:1, CT 20:1, 1.0SF

PH 3	FR 284/6T	HP(kW) 25.0(18.5)		Hz 60
V 200/400		A 67.9/33.9		IP55
NEMA NOM EFF		93.6	%	RPM 1765
ENCL TEFC	DUTY	CONT.		INS. CL. F Δ T 80 K
PF 0.84		DES B	CODE G	AMB. 40°C
SF 1.25	SFA 84.9/42.4		ALT 1000 m.a.s.l.	



MOBIL POLYREX EM
18 g 20000 h

430 Lbs