

DATA SHEET

Three Phase Induction Motor - Squirrel Cage



Customer :				
Product line	: JP Pump NEMA Premium Efficiency Three-Phase	Product code :	13507708	
		Catalog # :	02536ET3E256JP-S	
Frame	: 254/6JP	Cooling method	: IC411 - TEFC	
Insulation class	: F	Mounting	: F-1	
Duty cycle	: Cont.(S1)	Rotation ¹	: Both (CW and CCW)	
Ambient temperature	: -20°C to +40°C	Starting method	: Direct On Line	
Altitude	: 1000 m.a.s.l.	Approx. weight ²	: 247 lb	
Protection degree	: IP55	Moment of inertia (J)	: 1.31 sq.ft.lb	
Design	: A			
Output [HP]	25	20	20	
Poles	2	2	2	
Frequency [Hz]	60	50	50	
Rated voltage [V]	230/460	190/380	220/415	
Rated current [A]	57.0/28.5	55.8/27.9	50.4/26.7	
L. R. Amperes [A]	473/237	441/220	428/227	
LRC [A]	8.3x(Code J)	7.9x(Code J)	8.5x(Code J)	
No load current [A]	20.1/10.0	19.8/9.91	20.3/10.8	
Rated speed [RPM]	3530	2930	2940	
Slip [%]	1.94	2.33	2.00	
Rated torque [ft.lb]	37.2	35.8	35.7	
Locked rotor torque [%]	240	229	260	
Breakdown torque [%]	340	330	370	
Service factor	1.15	1.15	1.15	
Temperature rise	80 K	80 K	80 K	
Locked rotor time	14s (cold) 8s (hot)	14s (cold) 8s (hot)	14s (cold) 8s (hot)	
Noise level ²	75.0 dB(A)	72.0 dB(A)	72.0 dB(A)	
Efficiency (%)	25%	90.8	92.6	92.4
	50%	91.0	92.3	92.1
	75%	91.7	92.4	92.6
	100%	91.7	91.9	92.1
Power Factor	25%	0.50	0.50	0.45
	50%	0.77	0.77	0.73
	75%	0.85	0.86	0.83
	100%	0.89	0.89	0.88
Bearing type	: <u>Drive end</u> 6309 Z C3 <u>Non drive end</u> 6208 Z C3	Foundation loads		
Sealing	: V'Ring Without Bearing Seal	Max. traction	: 510 lb	
Lubrication interval	: 15797 h 20000 h	Max. compression	: 757 lb	
Lubricant amount	: 13 g 8 g			
Lubricant type	: Mobil Polyrex EM			
Notes USABLE @208V 63.0A SF 1.00 SFA 63.0A				
This revision replaces and cancel the previous one, which must be eliminated. (1) Looking the motor from the shaft end. (2) Measured at 1m and with tolerance of +3dB(A). (3) Approximate weight subject to changes after manufacturing process. (4) At 100% of full load.		These are average values based on tests with sinusoidal power supply, subject to the tolerances stipulated in NEMA MG-1.		
Rev.	Changes Summary	Performed	Checked	Date
Performed by				
Checked by			Page	Revision
Date	14/04/2022		1 / 16	

TORQUE AND CURRENT VS SPEED CURVE

Three Phase Induction Motor - Squirrel Cage



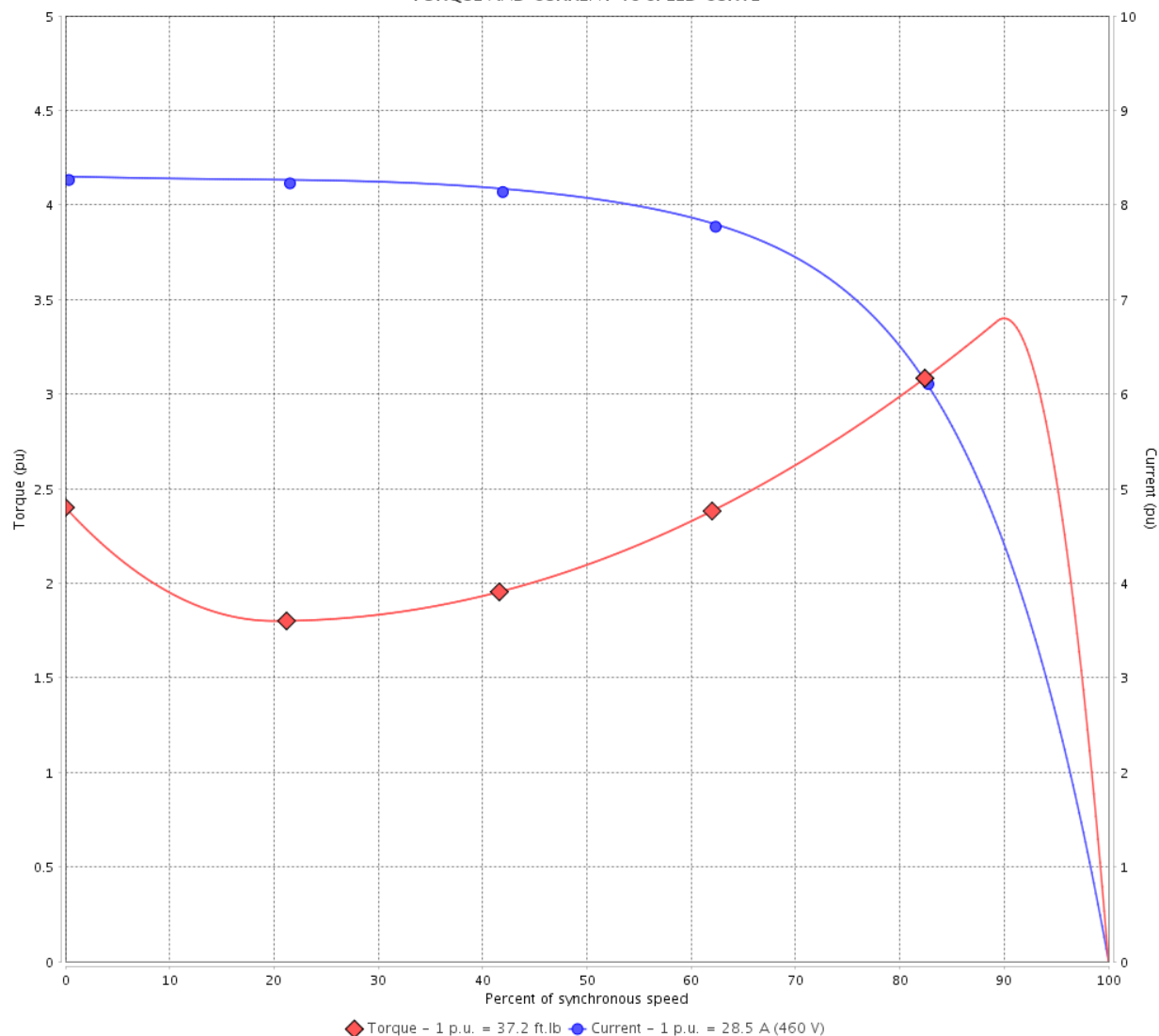
Customer :

Product line : JP Pump NEMA Premium Efficiency Three-Phase

Product code : 13507708

Catalog # : 02536ET3E256JP-S

TORQUE AND CURRENT VS SPEED CURVE



Performance : 230/460 V 60 Hz 2P

Rated current	: 57.0/28.5 A	Moment of inertia (J)	: 1.31 sq.ft.lb
LRC	: 8.3	Duty cycle	: Cont.(S1)
Rated torque	: 37.2 ft.lb	Insulation class	: F
Locked rotor torque	: 240 %	Service factor	: 1.15
Breakdown torque	: 340 %	Temperature rise	: 80 K
Rated speed	: 3530 rpm	Design	: A

Locked rotor time : 14s (cold) 8s (hot)

Rev.	Changes Summary	Performed	Checked	Date
Performed by			Page 2 / 16	Revision
Checked by				
Date	14/04/2022			

TORQUE AND CURRENT VS SPEED CURVE



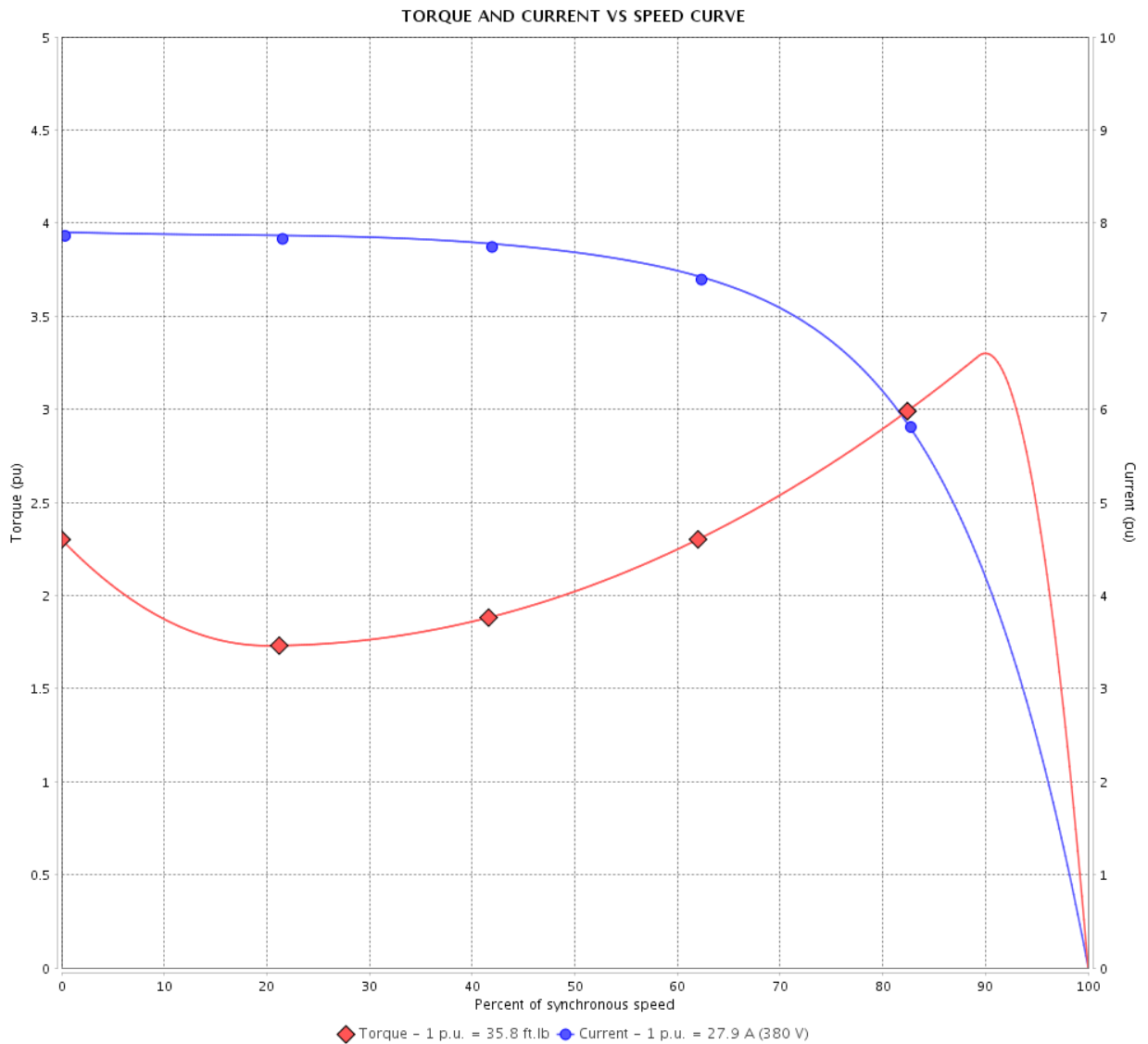
Three Phase Induction Motor - Squirrel Cage

Customer :

Product line : JP Pump NEMA Premium Efficiency Three-Phase

Product code : 13507708

Catalog # : 02536ET3E256JP-S



Performance : 190/380 V 50 Hz 2P

Rated current : 55.8/27.9 A
 LRC : 7.9
 Rated torque : 35.8 ft.lb
 Locked rotor torque : 229 %
 Breakdown torque : 330 %
 Rated speed : 2930 rpm

Moment of inertia (J) : 1.31 sq.ft.lb
 Duty cycle : Cont.(S1)
 Insulation class : F
 Service factor : 1.15
 Temperature rise : 80 K
 Design : A

Locked rotor time : 14s (cold) 8s (hot)

Rev.	Changes Summary	Performed	Checked	Date
Performed by			Page 3 / 16	Revision
Checked by				
Date	14/04/2022			

TORQUE AND CURRENT VS SPEED CURVE

Three Phase Induction Motor - Squirrel Cage



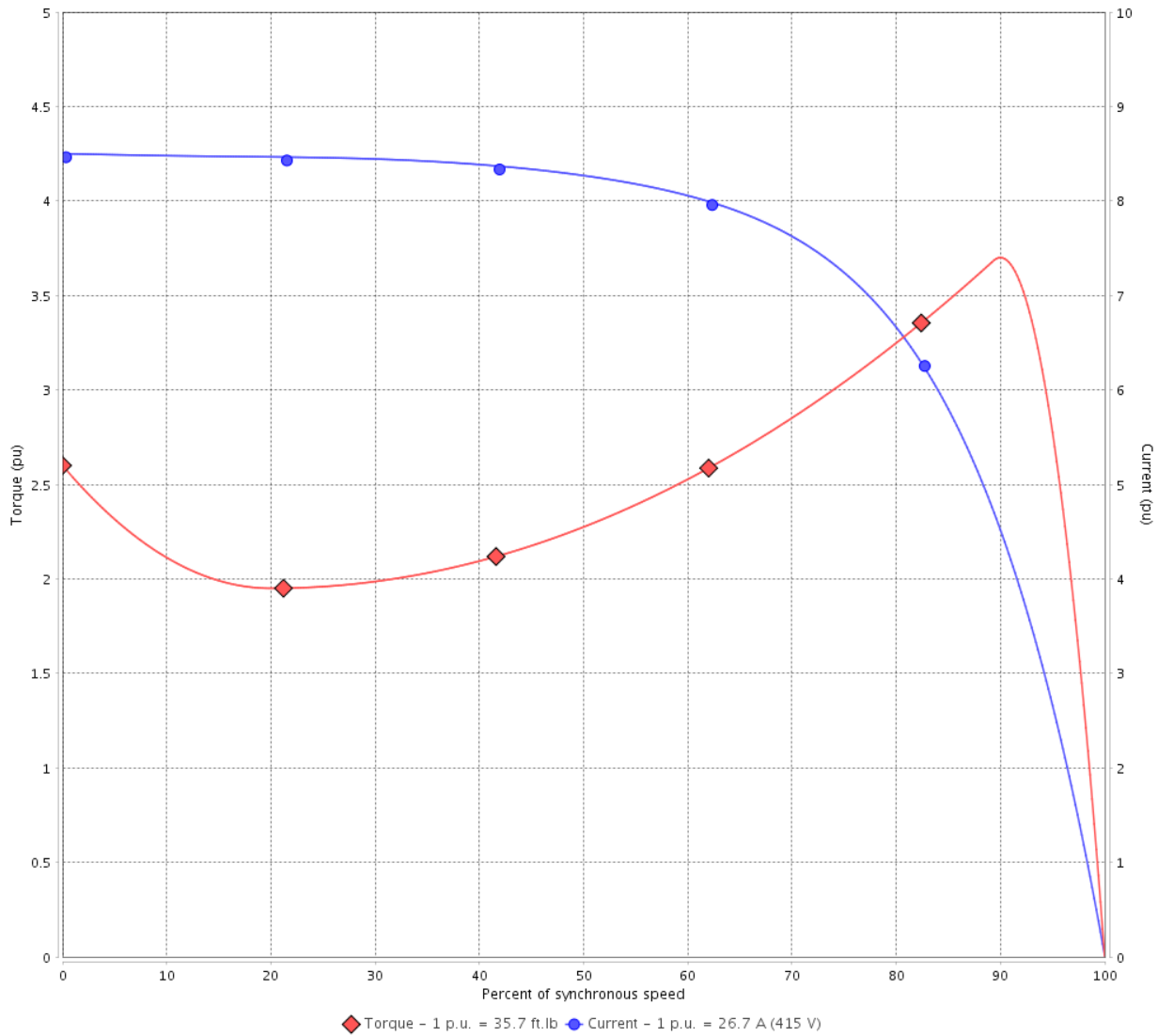
Customer :

Product line : JP Pump NEMA Premium
Efficiency Three-Phase

Product code : 13507708

Catalog # : 02536ET3E256JP-S

TORQUE AND CURRENT VS SPEED CURVE



Performance : 220/415 V 50 Hz 2P

Rated current	: 50.4/26.7 A	Moment of inertia (J)	: 1.31 sq.ft.lb
LRC	: 8.5	Duty cycle	: Cont.(S1)
Rated torque	: 35.7 ft.lb	Insulation class	: F
Locked rotor torque	: 260 %	Service factor	: 1.15
Breakdown torque	: 370 %	Temperature rise	: 80 K
Rated speed	: 2940 rpm	Design	: A

Locked rotor time : 14s (cold) 8s (hot)

Rev.	Changes Summary	Performed	Checked	Date
Performed by			Page 4 / 16	Revision
Checked by				
Date	14/04/2022			

LOAD PERFORMANCE CURVE

Three Phase Induction Motor - Squirrel Cage

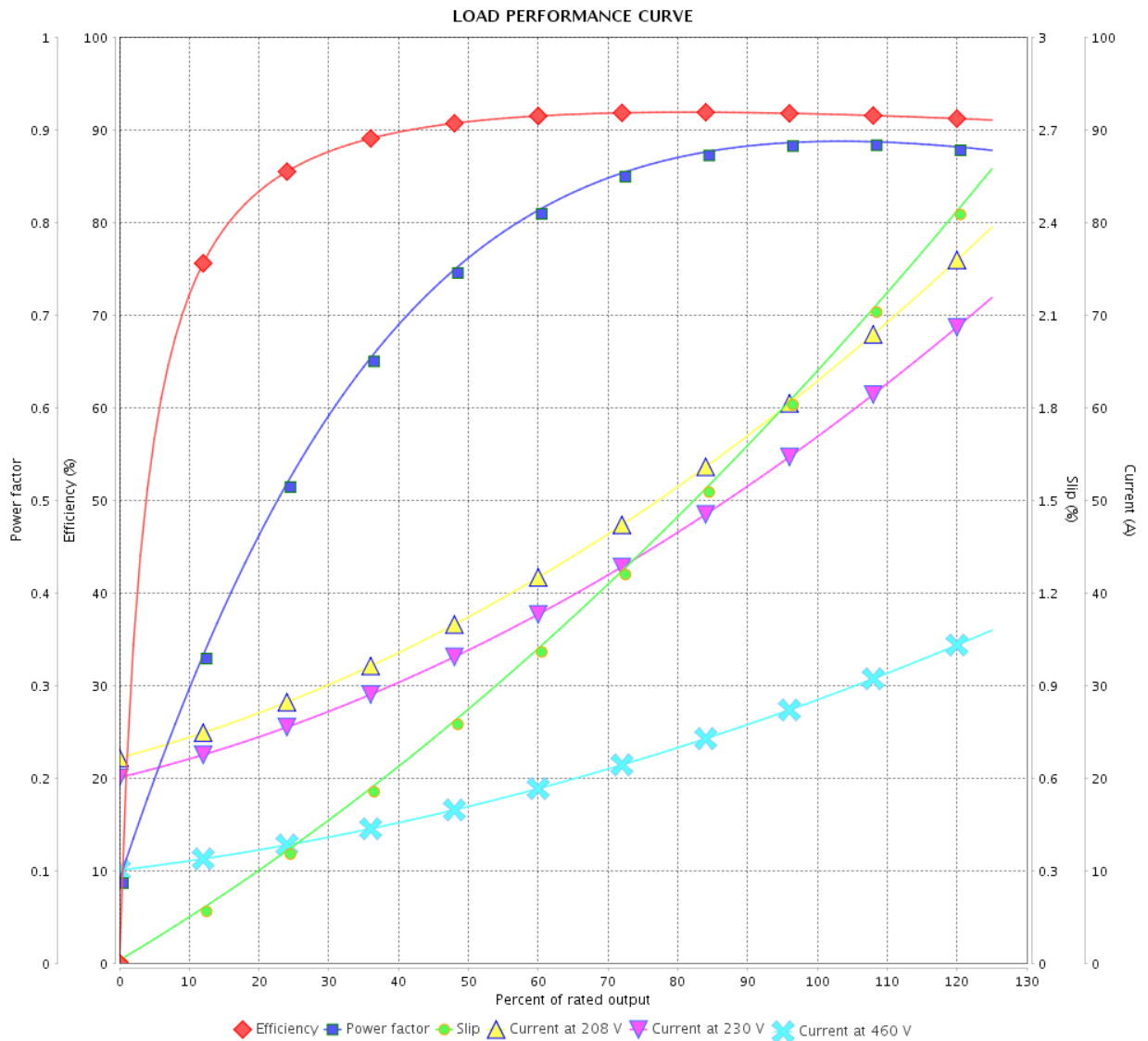


Customer :

Product line : JP Pump NEMA Premium
Efficiency Three-Phase

Product code : 13507708

Catalog # : 02536ET3E256JP-S



Performance : 230/460 V 60 Hz 2P

Rated current : 57.0/28.5 A
 LRC : 8.3
 Rated torque : 37.2 ft.lb
 Locked rotor torque : 240 %
 Breakdown torque : 340 %
 Rated speed : 3530 rpm

Moment of inertia (J) : 1.31 sq.ft.lb
 Duty cycle : Cont.(S1)
 Insulation class : F
 Service factor : 1.15
 Temperature rise : 80 K
 Design : A

Rev.	Changes Summary	Performed	Checked	Date
Performed by			Page	Revision
Checked by			5 / 16	
Date	14/04/2022			

LOAD PERFORMANCE CURVE

Three Phase Induction Motor - Squirrel Cage



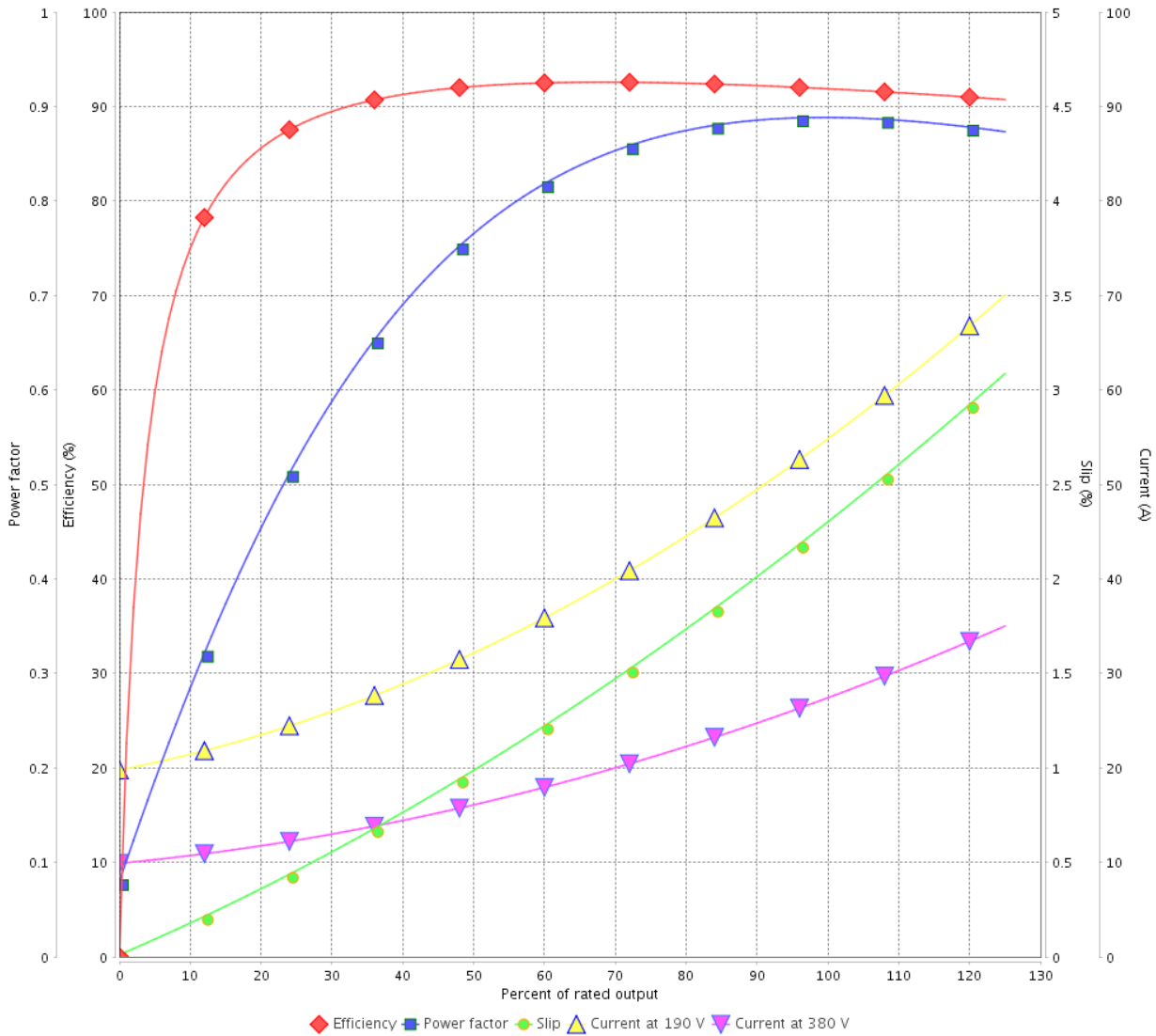
Customer :

Product line : JP Pump NEMA Premium
Efficiency Three-Phase

Product code : 13507708

Catalog # : 02536ET3E256JP-S

LOAD PERFORMANCE CURVE



Performance : 190/380 V 50 Hz 2P

Rated current : 55.8/27.9 A
 LRC : 7.9
 Rated torque : 35.8 ft.lb
 Locked rotor torque : 229 %
 Breakdown torque : 330 %
 Rated speed : 2930 rpm

Moment of inertia (J) : 1.31 sq.ft.lb
 Duty cycle : Cont.(S1)
 Insulation class : F
 Service factor : 1.15
 Temperature rise : 80 K
 Design : A

Rev.	Changes Summary	Performed	Checked	Date
Performed by			Page	Revision
Checked by			6 / 16	
Date	14/04/2022			

LOAD PERFORMANCE CURVE

Three Phase Induction Motor - Squirrel Cage

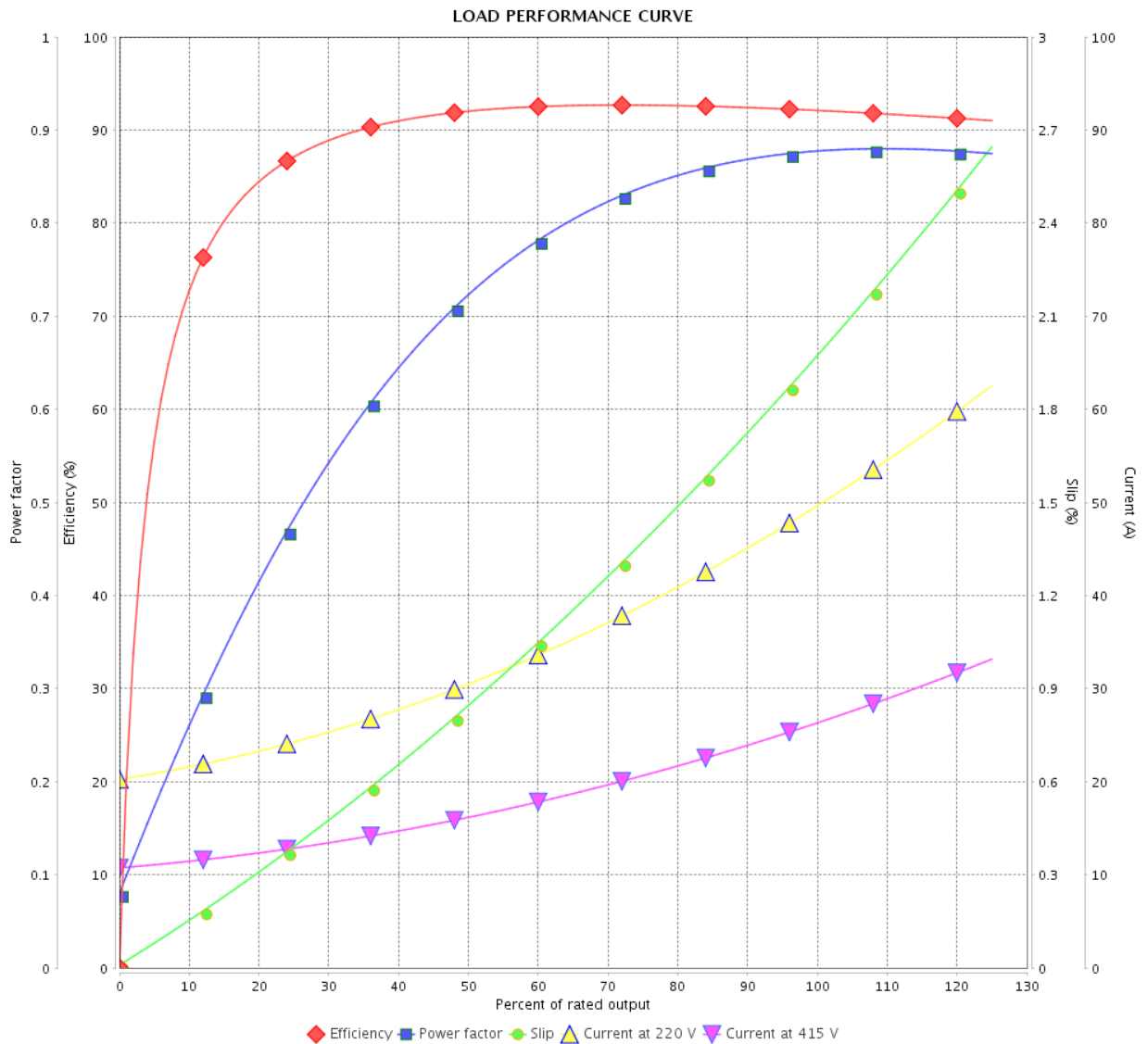


Customer :

Product line : JP Pump NEMA Premium Efficiency Three-Phase

Product code : 13507708

Catalog # : 02536ET3E256JP-S



Performance : 220/415 V 50 Hz 2P

Rated current : 50.4/26.7 A
 LRC : 8.5
 Rated torque : 35.7 ft.lb
 Locked rotor torque : 260 %
 Breakdown torque : 370 %
 Rated speed : 2940 rpm

Moment of inertia (J) : 1.31 sq.ft.lb
 Duty cycle : Cont.(S1)
 Insulation class : F
 Service factor : 1.15
 Temperature rise : 80 K
 Design : A

Rev.	Changes Summary	Performed	Checked	Date
Performed by		Page		Revision
Checked by		7 / 16		
Date		14/04/2022		

THERMAL LIMIT CURVE



Three Phase Induction Motor - Squirrel Cage

Customer :

Product line : JP Pump NEMA Premium
Efficiency Three-Phase

Product code : 13507708

Catalog # : 02536ET3E256JP-S

Performance : 230/460 V 60 Hz 2P

Rated current : 57.0/28.5 A
LRC : 8.3
Rated torque : 37.2 ft.lb
Locked rotor torque : 240 %
Breakdown torque : 340 %
Rated speed : 3530 rpm

Moment of inertia (J) : 1.31 sq.ft.lb
Duty cycle : Cont.(S1)
Insulation class : F
Service factor : 1.15
Temperature rise : 80 K
Design : A

Heating constant

Cooling constant

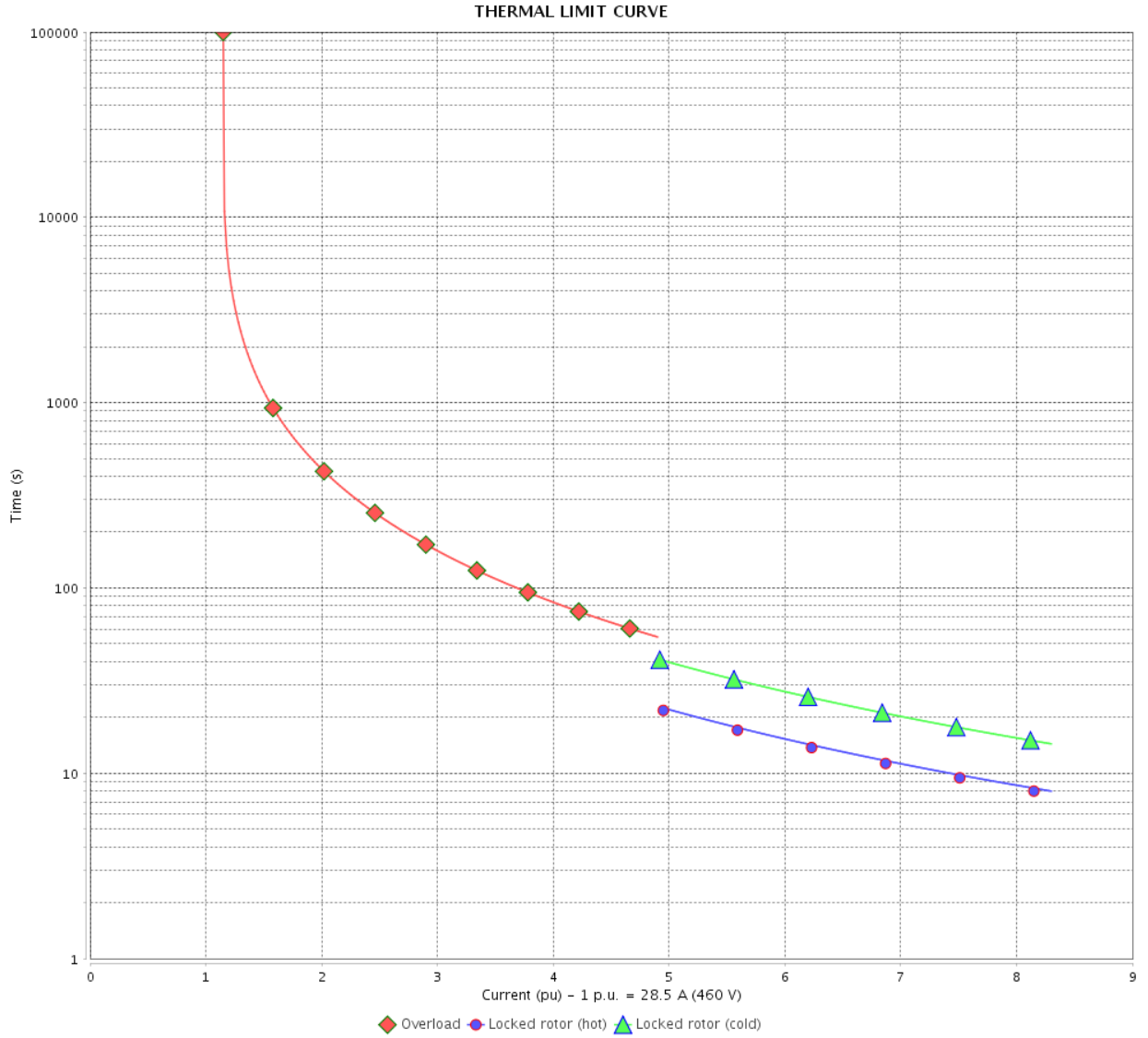
Rev.	Changes Summary	Performed	Checked	Date
Performed by				
Checked by			Page	Revision
Date	14/04/2022		8 / 16	

THERMAL LIMIT CURVE

Three Phase Induction Motor - Squirrel Cage



Customer : _____



Rev.	Changes Summary	Performed	Checked	Date
Performed by				
Checked by				
Date				
		Page 9 / 16	Revision	

THERMAL LIMIT CURVE



Three Phase Induction Motor - Squirrel Cage

Customer :

Product line : JP Pump NEMA Premium
Efficiency Three-Phase

Product code : 13507708

Catalog # : 02536ET3E256JP-S

Performance : 190/380 V 50 Hz 2P

Rated current : 55.8/27.9 A
LRC : 7.9
Rated torque : 35.8 ft.lb
Locked rotor torque : 229 %
Breakdown torque : 330 %
Rated speed : 2930 rpm

Moment of inertia (J) : 1.31 sq.ft.lb
Duty cycle : Cont.(S1)
Insulation class : F
Service factor : 1.15
Temperature rise : 80 K
Design : A

Heating constant

Cooling constant

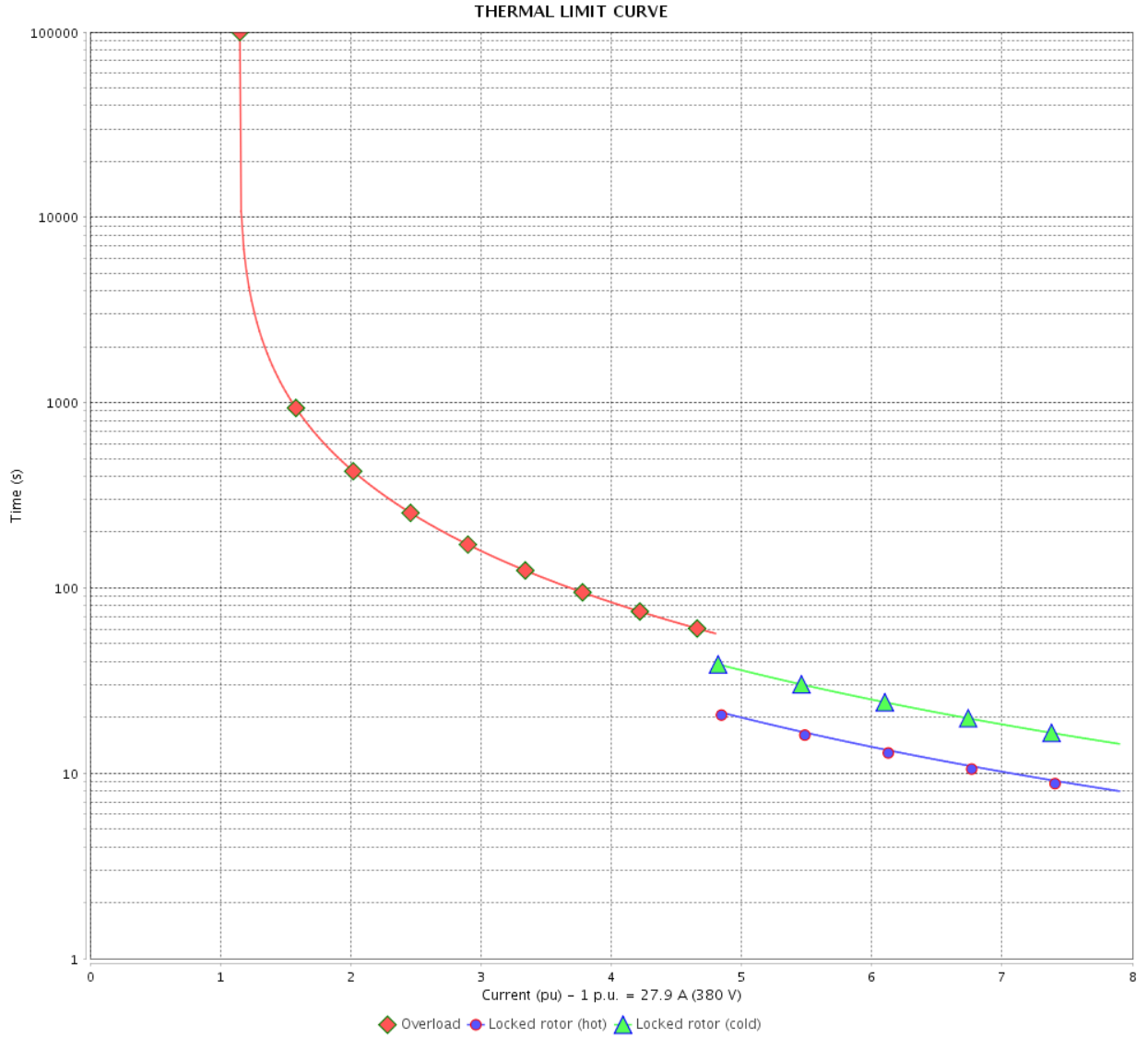
Rev.	Changes Summary	Performed	Checked	Date
Performed by				
Checked by			Page	Revision
Date	14/04/2022		10 / 16	

THERMAL LIMIT CURVE

Three Phase Induction Motor - Squirrel Cage



Customer : _____



Rev.	Changes Summary	Performed	Checked	Date
Performed by		Page		Revision
Checked by				
Date				

THERMAL LIMIT CURVE



Three Phase Induction Motor - Squirrel Cage

Customer :

Product line : JP Pump NEMA Premium
Efficiency Three-Phase

Product code : 13507708

Catalog # : 02536ET3E256JP-S

Performance : 220/415 V 50 Hz 2P

Rated current : 50.4/26.7 A
LRC : 8.5
Rated torque : 35.7 ft.lb
Locked rotor torque : 260 %
Breakdown torque : 370 %
Rated speed : 2940 rpm

Moment of inertia (J) : 1.31 sq.ft.lb
Duty cycle : Cont.(S1)
Insulation class : F
Service factor : 1.15
Temperature rise : 80 K
Design : A

Heating constant

Cooling constant

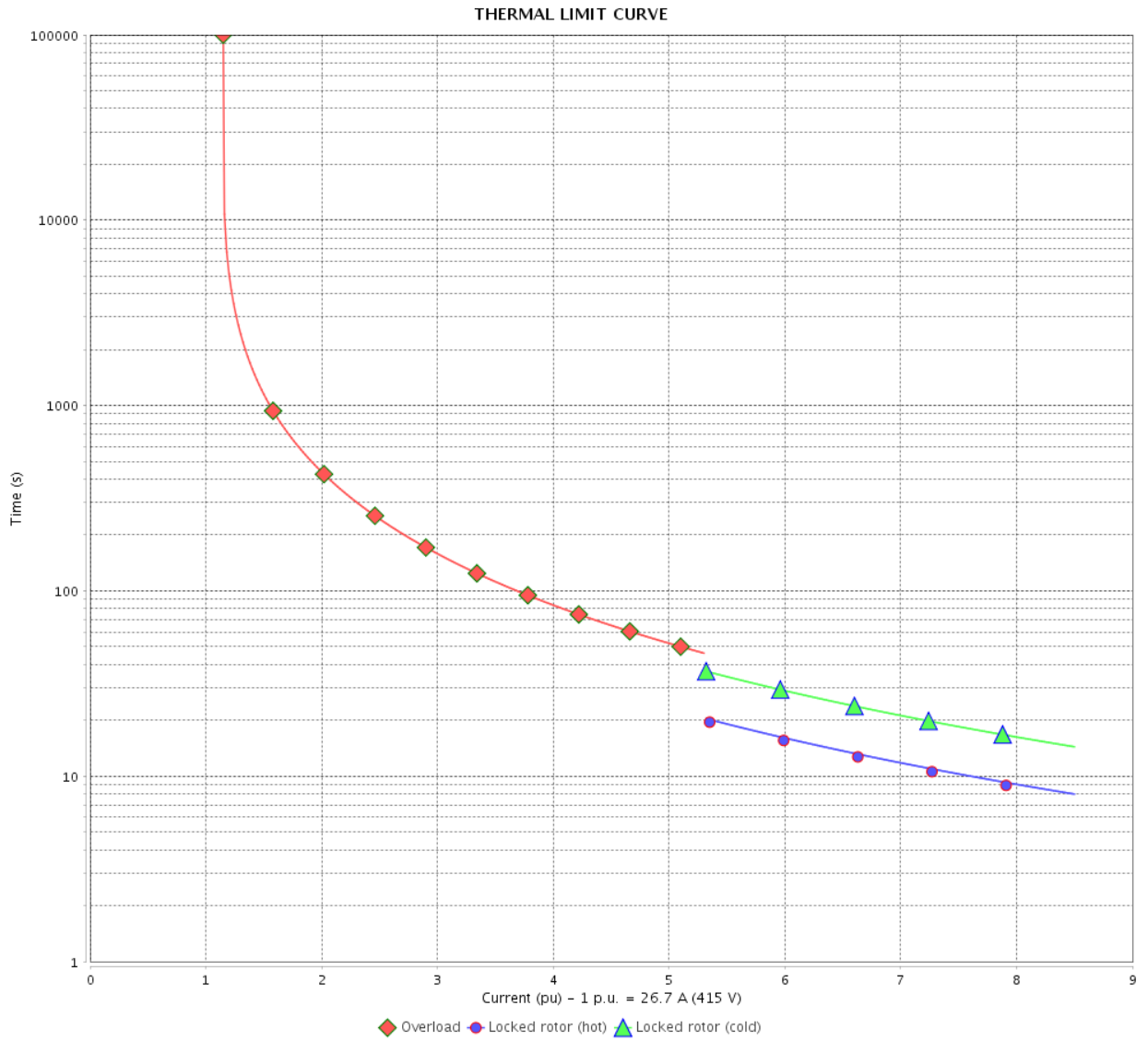
Rev.	Changes Summary	Performed	Checked	Date
Performed by				
Checked by			Page	Revision
Date	14/04/2022		12 / 16	

THERMAL LIMIT CURVE

Three Phase Induction Motor - Squirrel Cage



Customer : _____



Rev.	Changes Summary	Performed	Checked	Date
Performed by		Page 13 / 16		Revision
Checked by				
Date				

VFD OPERATION CURVE

Three Phase Induction Motor - Squirrel Cage

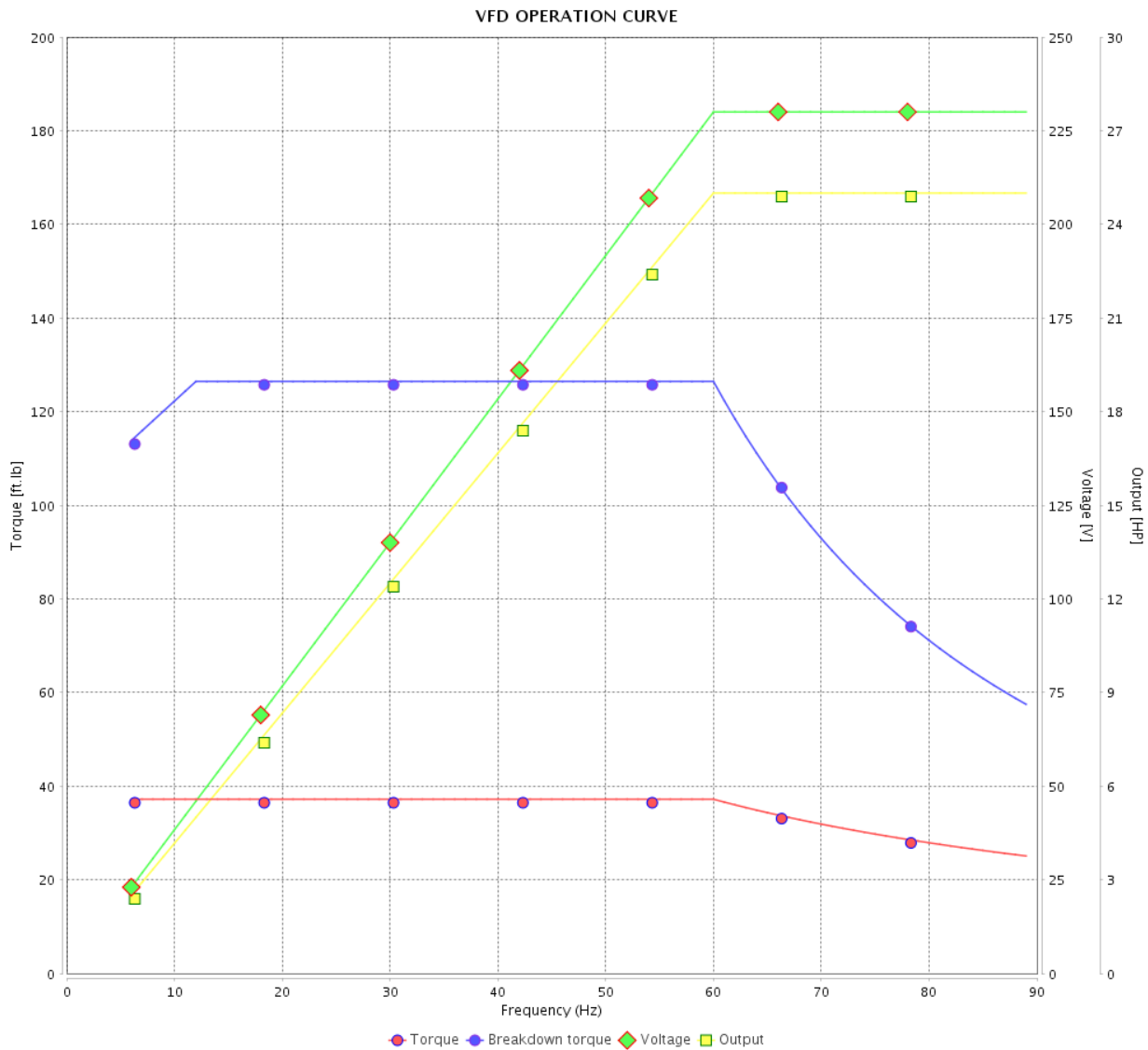


Customer :

Product line : JP Pump NEMA Premium Efficiency Three-Phase

Product code : 13507708

Catalog # : 02536ET3E256JP-S



Performance : 230/460 V 60 Hz 2P

Rated current : 57.0/28.5 A
 LRC : 8.3
 Rated torque : 37.2 ft.lb
 Locked rotor torque : 240 %
 Breakdown torque : 340 %
 Rated speed : 3530 rpm

Moment of inertia (J) : 1.31 sq.ft.lb
 Duty cycle : Cont.(S1)
 Insulation class : F
 Service factor : 1.15
 Temperature rise : 80 K
 Design : A

Rev.	Changes Summary	Performed	Checked	Date
Performed by			Page 14 / 16	Revision
Checked by				
Date	14/04/2022			

VFD OPERATION CURVE

Three Phase Induction Motor - Squirrel Cage

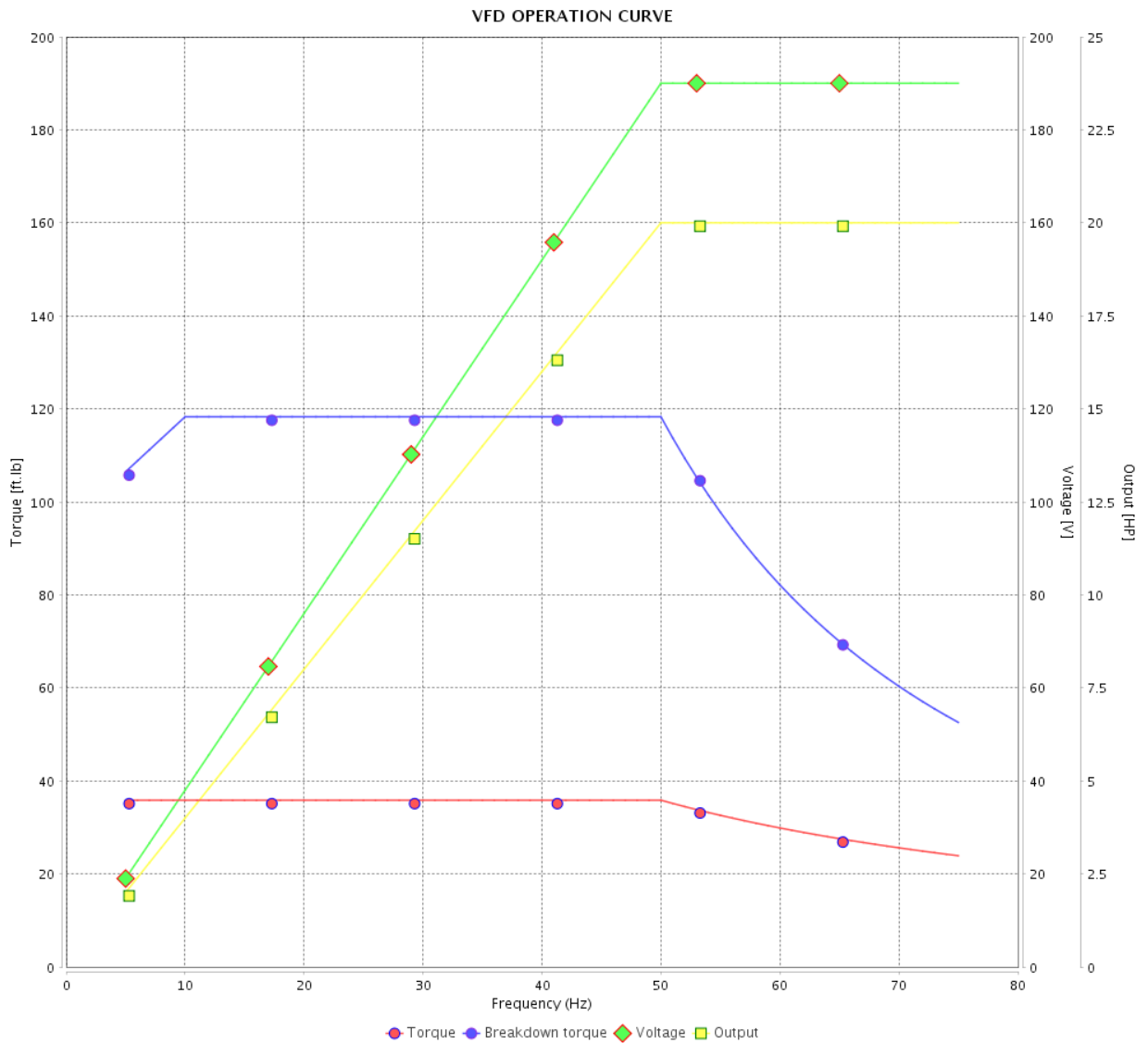


Customer :

Product line : JP Pump NEMA Premium Efficiency Three-Phase

Product code : 13507708

Catalog # : 02536ET3E256JP-S



Performance : 190/380 V 50 Hz 2P

Rated current : 55.8/27.9 A
 LRC : 7.9
 Rated torque : 35.8 ft.lb
 Locked rotor torque : 229 %
 Breakdown torque : 330 %
 Rated speed : 2930 rpm

Moment of inertia (J) : 1.31 sq.ft.lb
 Duty cycle : Cont.(S1)
 Insulation class : F
 Service factor : 1.15
 Temperature rise : 80 K
 Design : A

Rev.	Changes Summary	Performed	Checked	Date
Performed by		Page		Revision
Checked by		15 / 16		
Date	14/04/2022			

VFD OPERATION CURVE

Three Phase Induction Motor - Squirrel Cage



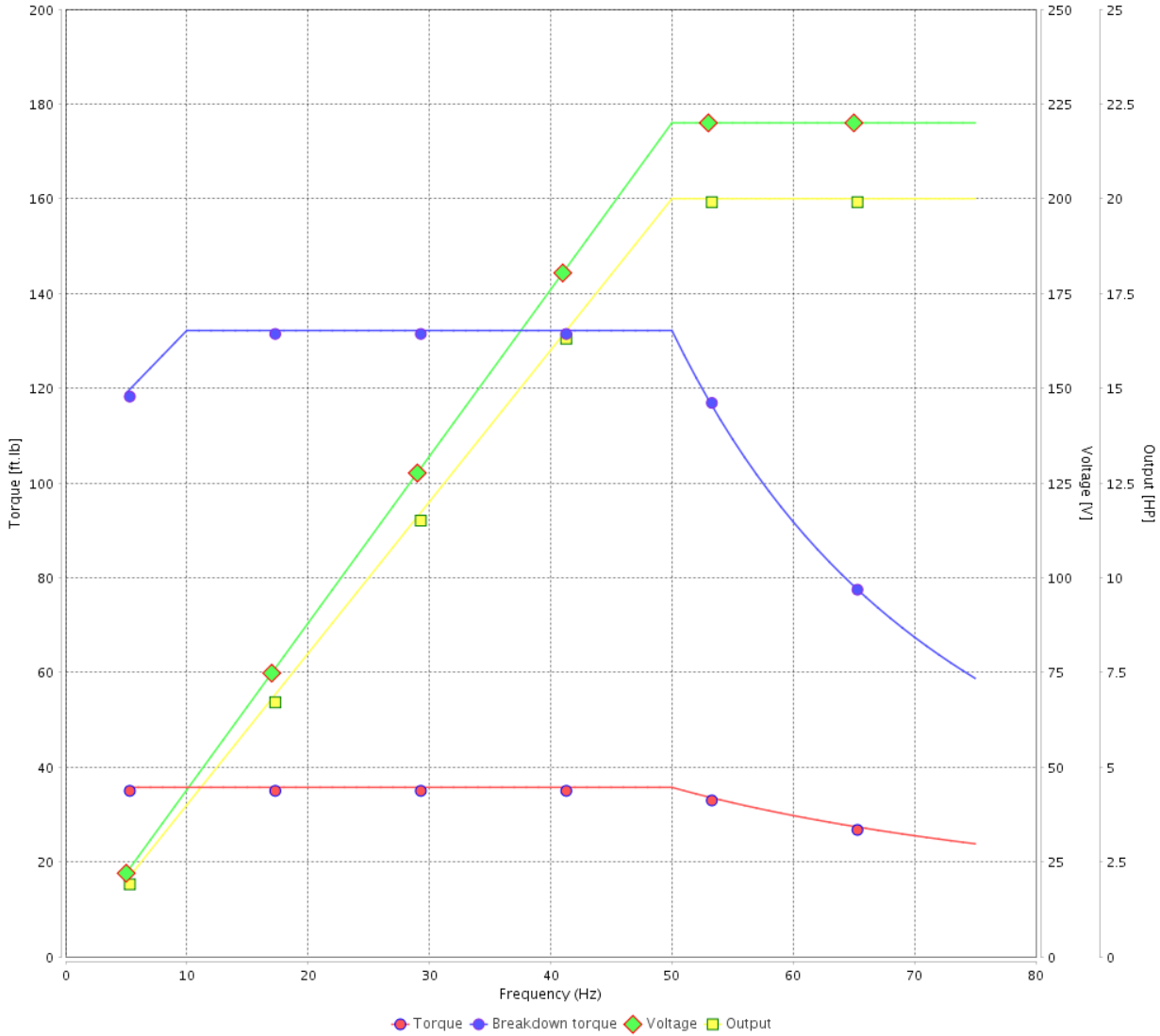
Customer :

Product line : JP Pump NEMA Premium Efficiency Three-Phase

Product code : 13507708

Catalog # : 02536ET3E256JP-S

VFD OPERATION CURVE



Performance : 220/415 V 50 Hz 2P

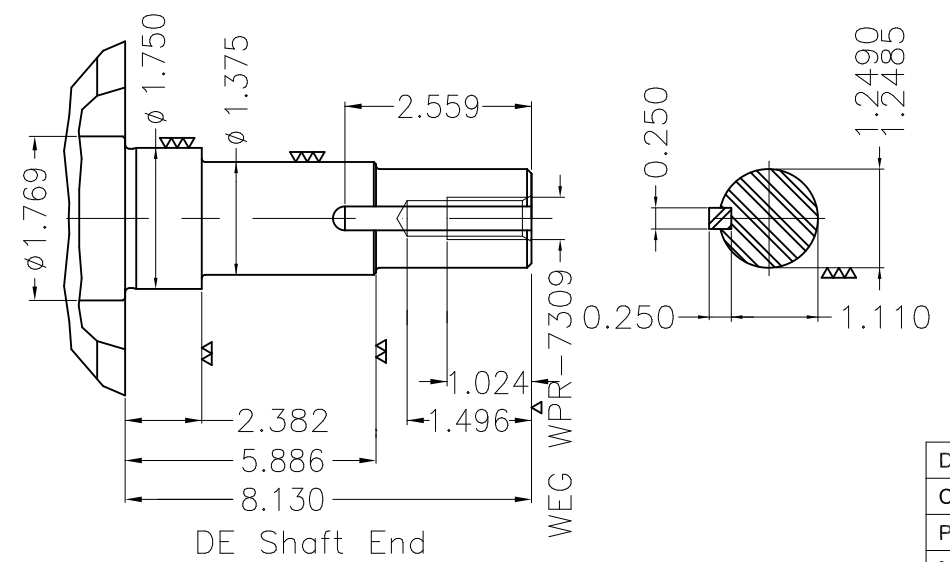
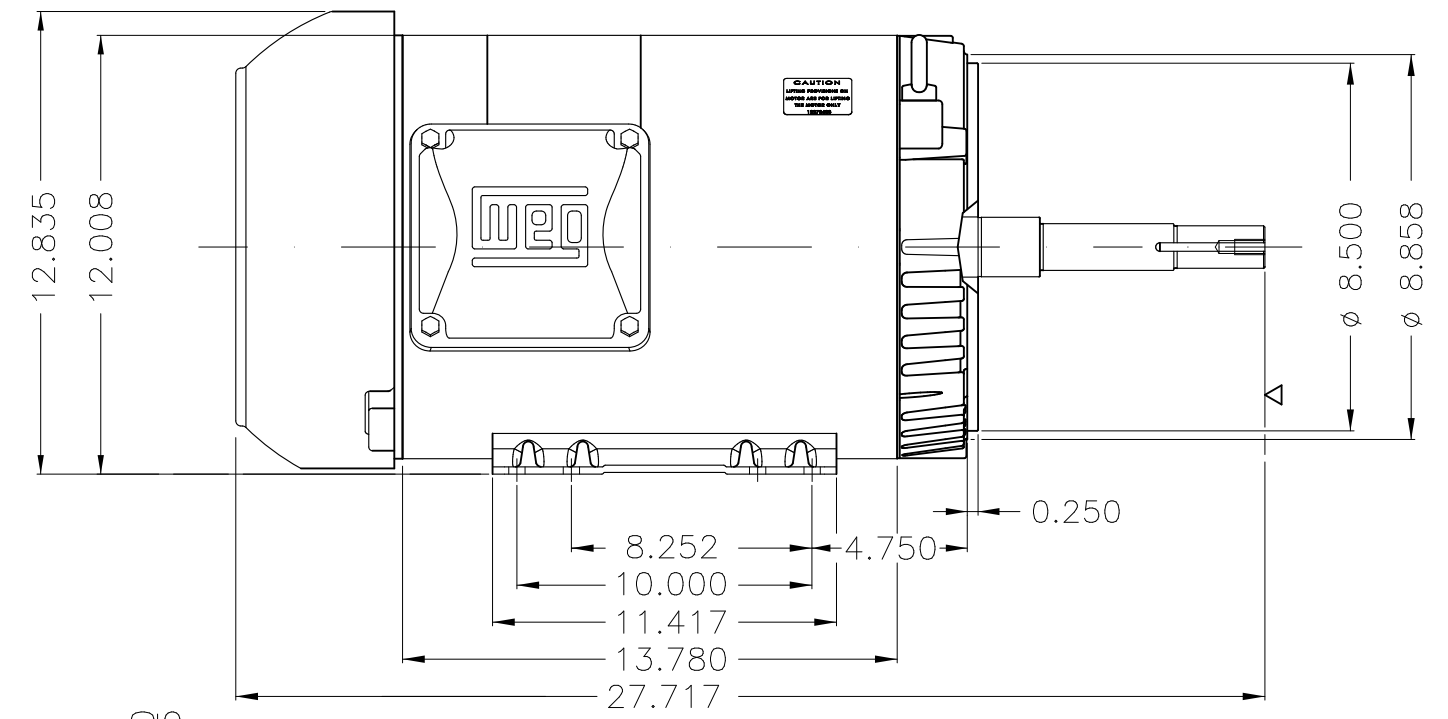
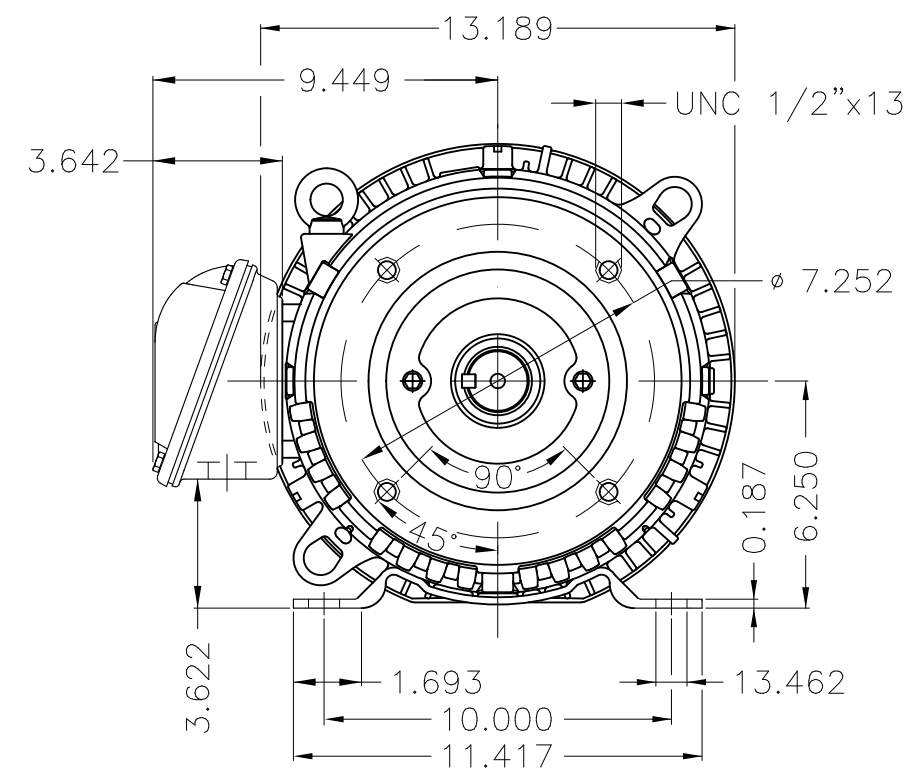
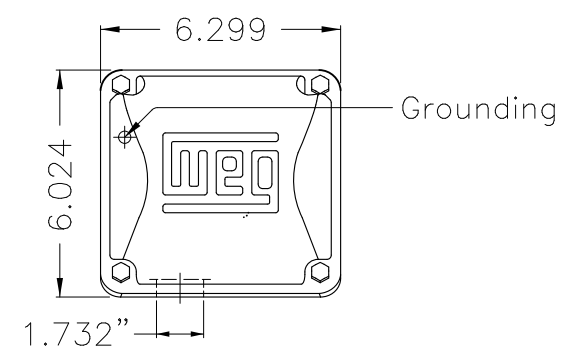
Rated current : 50.4/26.7 A
 LRC : 8.5
 Rated torque : 35.7 ft.lb
 Locked rotor torque : 260 %
 Breakdown torque : 370 %
 Rated speed : 2940 rpm

Moment of inertia (J) : 1.31 sq.ft.lb
 Duty cycle : Cont.(S1)
 Insulation class : F
 Service factor : 1.15
 Temperature rise : 80 K
 Design : A

Rev.	Changes Summary	Performed	Checked	Date
Performed by		Page		Revision
Checked by		16 / 16		
Date	14/04/2022			

1 2 3 4 5 6

A
B
C
D
E



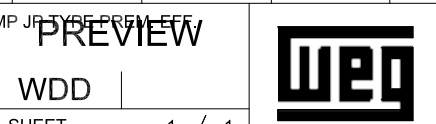
EUNC 1/2"-13 WEG WPR-7309

DE Shaft End

Design A										
Color Munsell N 1 matte black										
Painting plan 207N										
Mounting F-1/B34R(D)										
ECM	LOC	SUMMARY OF MODIFICATIONS				EXECUTED	CHECKED	RELEASED	DATE	VER
EXECUTED	PIRBUSER	THREE PH. MOTOR ROLLED STEEL CLOSE COUPLED PUMP JP 50 DE PREL ETX								
CHECKED		FRAME 254/6JP IP55 TEFC								
RELEASED										
REL DT.		WMO	Jaragua do Sul	Product Engineering						

25 HP 02 Poles 60 Hz

Dimensions in inches XME A3





NEMA
Premium



MADE IN MEXICO

MAT: 13507708 CC029A
W01.TE0IC0X0N
MODEL 02536ET3E256JP-S
24FEV2021 S/N:

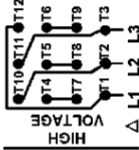
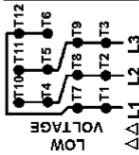
For 60Hz: Class I, Zone 2, IIC
Class I, Div.2, Gr. A,B,C,D - T3
Div 2 Inverter Duty (SF1.00)
CT 2:1/VT 1000:1

PH 3	Hz 60	HP 25
FR 254/6.JP		KW 18.5
DUTY CONT.		V 230/460
ALT 1000 m.a.s.l.		A 57.0/28.5
INS CL F AT 80K	IP55	SFA 65.5/32.8
AMB 40°C	DES A	SF 1.15
ENCL TEFC	CODE J	PF 0.89
USABLE @ 208V 63.0A		RPM 3530
SF1.00		NEMA NOM. EFF 91.7%

ALTERNATE RATING: 20HP 50Hz 190-220/380-415V SF1.15
55.8-49.6/27.9-26.3A 2930RPM EFF 91.9% (IE3) IEC 60034-1

For safe area-Inverter duty motor For 60Hz use on VPWM 1000:1 VT, 10:1 CT

DE 6309-Z-C3 ODE 6208-Z-C3 MOBIL POLYREX EM 15797h



T1-BLU T2-WHT
T3-ORG T4-YEL
T5-BLK T6-GRY
T7-PNK T8-RED
T9-BRK RED
T10-CURRY
T11-GRN T12-VLT

INTERCHANGE ANY TWO LINE WIRES TO REVERSE THE ROTATION



WARNING: Motor must be grounded in accordance with local and national electrical codes to prevent serious electrical shocks. Disconnect power source before servicing unit.

AVERTISSEMENT: Le moteur doit être mis à la terre conformément aux codes électriques locaux et nationaux afin d'éviter tout choc électrique grave. Déconnectez l'alimentation avant l'entretien de la machine.

