

DATA SHEET



Three Phase Induction Motor - Squirrel Cage

Customer :													
Product line : JM Pump NEMA Premium Efficiency Three-Phase	Product code : 13506324 Catalog # : 02536ET3H256JM-S												
Frame : 254/6JM Output : 25 HP (18.5 kW) Poles : 2 Frequency : 60 Hz Rated voltage : 575 V Rated current : 22.8 A L. R. Amperes : 189 A LRC : 8.3x(Code J) No load current : 8.04 A Rated speed : 3530 rpm Slip : 1.94 % Rated torque : 37.2 ft.lb Locked rotor torque : 240 % Breakdown torque : 340 % Insulation class : F Service factor : 1.15 Moment of inertia (J) : 1.31 sq.ft.lb Design : A	Locked rotor time : 14s (cold) 8s (hot) Temperature rise : 80 K Duty cycle : Cont.(S1) Ambient temperature : -20°C to +40°C Altitude : 1000 m.a.s.l. Protection degree : IP55 Cooling method : IC411 - TEFC Mounting : F-1 Rotation ¹ : Both (CW and CCW) Noise level ² : 75.0 dB(A) Starting method : Direct On Line Approx. weight ³ : 244 lb												
Output 25% 50% 75% 100% Efficiency (%) 90.8 91.0 91.7 91.7 Power Factor 0.50 0.77 0.85 0.89	Foundation loads Max. traction : 484 lb Max. compression : 729 lb												
Bearing type : Sealing : Lubrication interval : Lubricant amount : Lubricant type :	<table border="0"> <tr> <td style="text-align: center;"><u>Drive end</u></td> <td style="text-align: center;"><u>Non drive end</u></td> </tr> <tr> <td style="text-align: center;">6309 Z C3</td> <td style="text-align: center;">6208 Z C3</td> </tr> <tr> <td style="text-align: center;">V'Ring</td> <td style="text-align: center;">V'Ring</td> </tr> <tr> <td style="text-align: center;">15797 h</td> <td style="text-align: center;">20000 h</td> </tr> <tr> <td style="text-align: center;">13 g</td> <td style="text-align: center;">8 g</td> </tr> <tr> <td colspan="2" style="text-align: center;">Mobil Polyrex EM</td> </tr> </table>	<u>Drive end</u>	<u>Non drive end</u>	6309 Z C3	6208 Z C3	V'Ring	V'Ring	15797 h	20000 h	13 g	8 g	Mobil Polyrex EM	
<u>Drive end</u>	<u>Non drive end</u>												
6309 Z C3	6208 Z C3												
V'Ring	V'Ring												
15797 h	20000 h												
13 g	8 g												
Mobil Polyrex EM													
Notes													
This revision replaces and cancel the previous one, which must be eliminated. (1) Looking the motor from the shaft end. (2) Measured at 1m and with tolerance of +3dB(A). (3) Approximate weight subject to changes after manufacturing process. (4) At 100% of full load.	These are average values based on tests with sinusoidal power supply, subject to the tolerances stipulated in NEMA MG-1.												
Rev.	Changes Summary	Performed	Checked	Date									
Performed by													
Checked by			Page	Revision									
Date	14/04/2022		1 / 6										

TORQUE AND CURRENT VS SPEED CURVE

Three Phase Induction Motor - Squirrel Cage



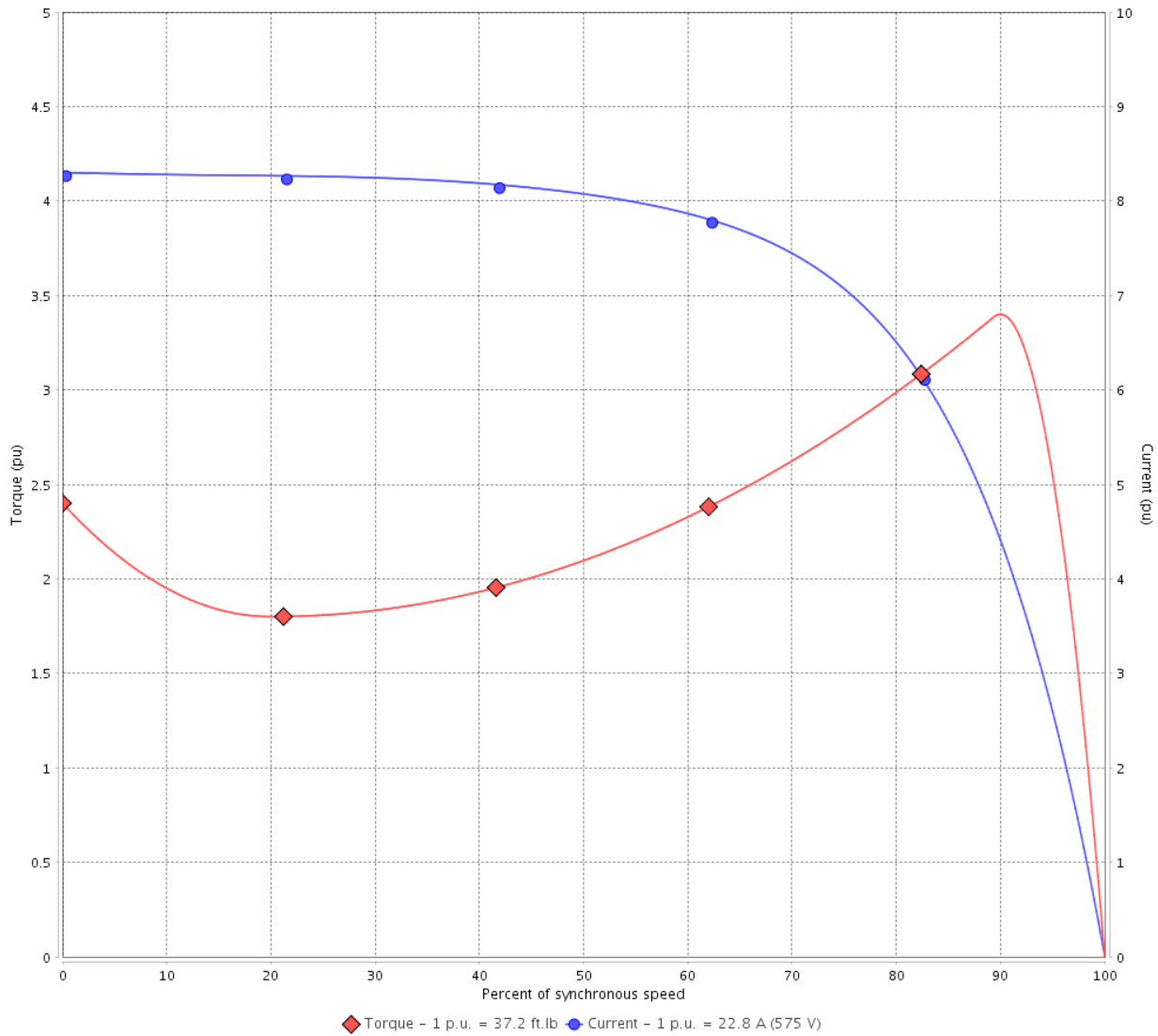
Customer :

Product line : JM Pump NEMA Premium
Efficiency Three-Phase

Product code : 13506324

Catalog # : 02536ET3H256JM-S

TORQUE AND CURRENT VS SPEED CURVE



Performance : 575 V 60 Hz 2P

Rated current	: 22.8 A	Moment of inertia (J)	: 1.31 sq.ft.lb
LRC	: 8.3	Duty cycle	: Cont.(S1)
Rated torque	: 37.2 ft.lb	Insulation class	: F
Locked rotor torque	: 240 %	Service factor	: 1.15
Breakdown torque	: 340 %	Temperature rise	: 80 K
Rated speed	: 3530 rpm	Design	: A

Locked rotor time : 14s (cold) 8s (hot)

Rev.	Changes Summary	Performed	Checked	Date
Performed by			Page 2 / 6	Revision
Checked by				
Date	14/04/2022			

LOAD PERFORMANCE CURVE

Three Phase Induction Motor - Squirrel Cage

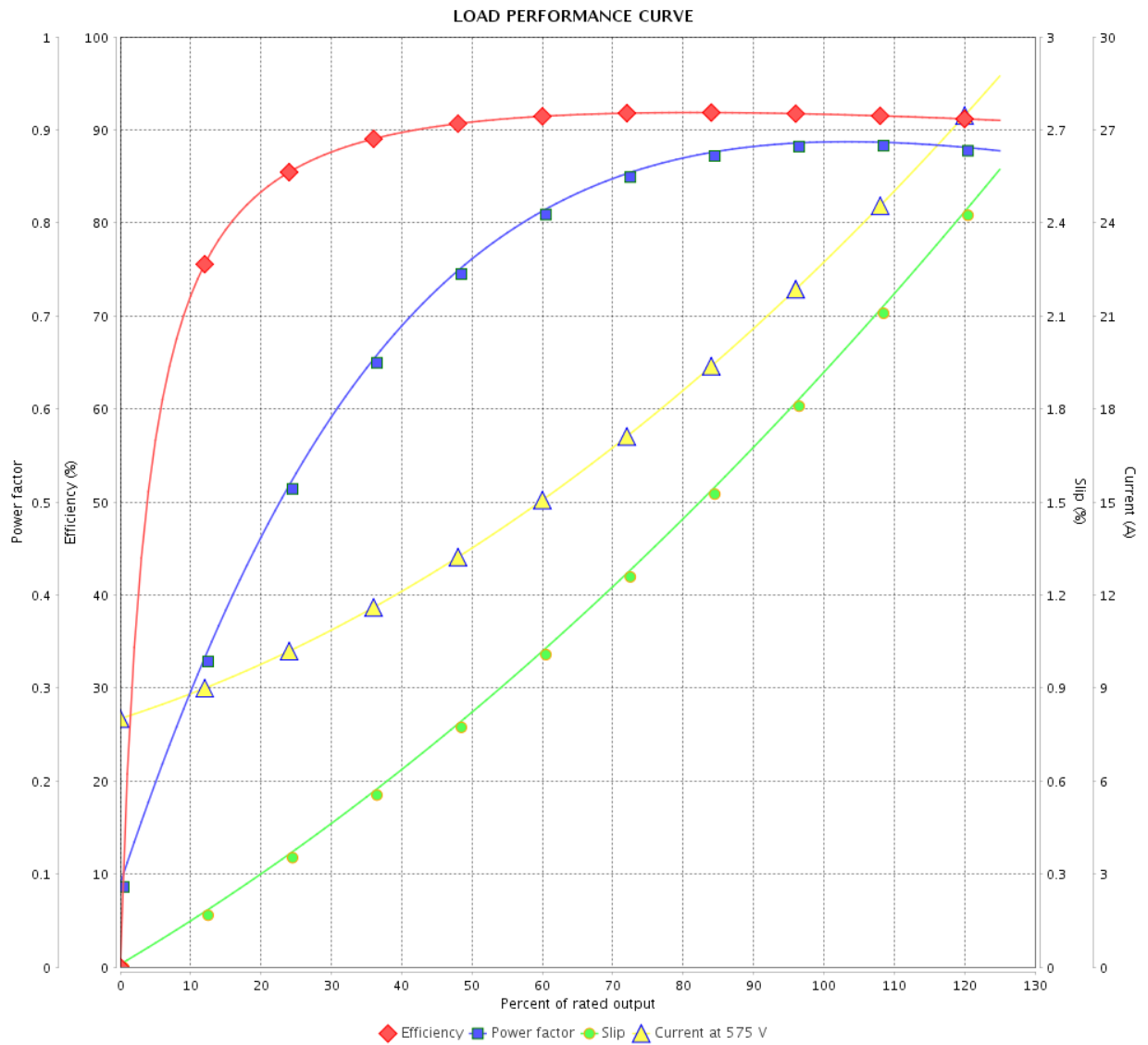


Customer : _____

Product line : JM Pump NEMA Premium
Efficiency Three-Phase

Product code : 13506324

Catalog # : 02536ET3H256JM-S



Performance : 575 V 60 Hz 2P

Rated current : 22.8 A
 LRC : 8.3
 Rated torque : 37.2 ft.lb
 Locked rotor torque : 240 %
 Breakdown torque : 340 %
 Rated speed : 3530 rpm

Moment of inertia (J) : 1.31 sq.ft.lb
 Duty cycle : Cont.(S1)
 Insulation class : F
 Service factor : 1.15
 Temperature rise : 80 K
 Design : A

Rev.	Changes Summary	Performed	Checked	Date	
Performed by					
Checked by					
Date					14/04/2022
		Page	Revision		
		3 / 6			

THERMAL LIMIT CURVE



Three Phase Induction Motor - Squirrel Cage

Customer :

Product line : JM Pump NEMA Premium
Efficiency Three-Phase

Product code : 13506324

Catalog # : 02536ET3H256JM-S

Performance : 575 V 60 Hz 2P

Rated current	: 22.8 A	Moment of inertia (J)	: 1.31 sq.ft.lb
LRC	: 8.3	Duty cycle	: Cont.(S1)
Rated torque	: 37.2 ft.lb	Insulation class	: F
Locked rotor torque	: 240 %	Service factor	: 1.15
Breakdown torque	: 340 %	Temperature rise	: 80 K
Rated speed	: 3530 rpm	Design	: A

Heating constant

Cooling constant

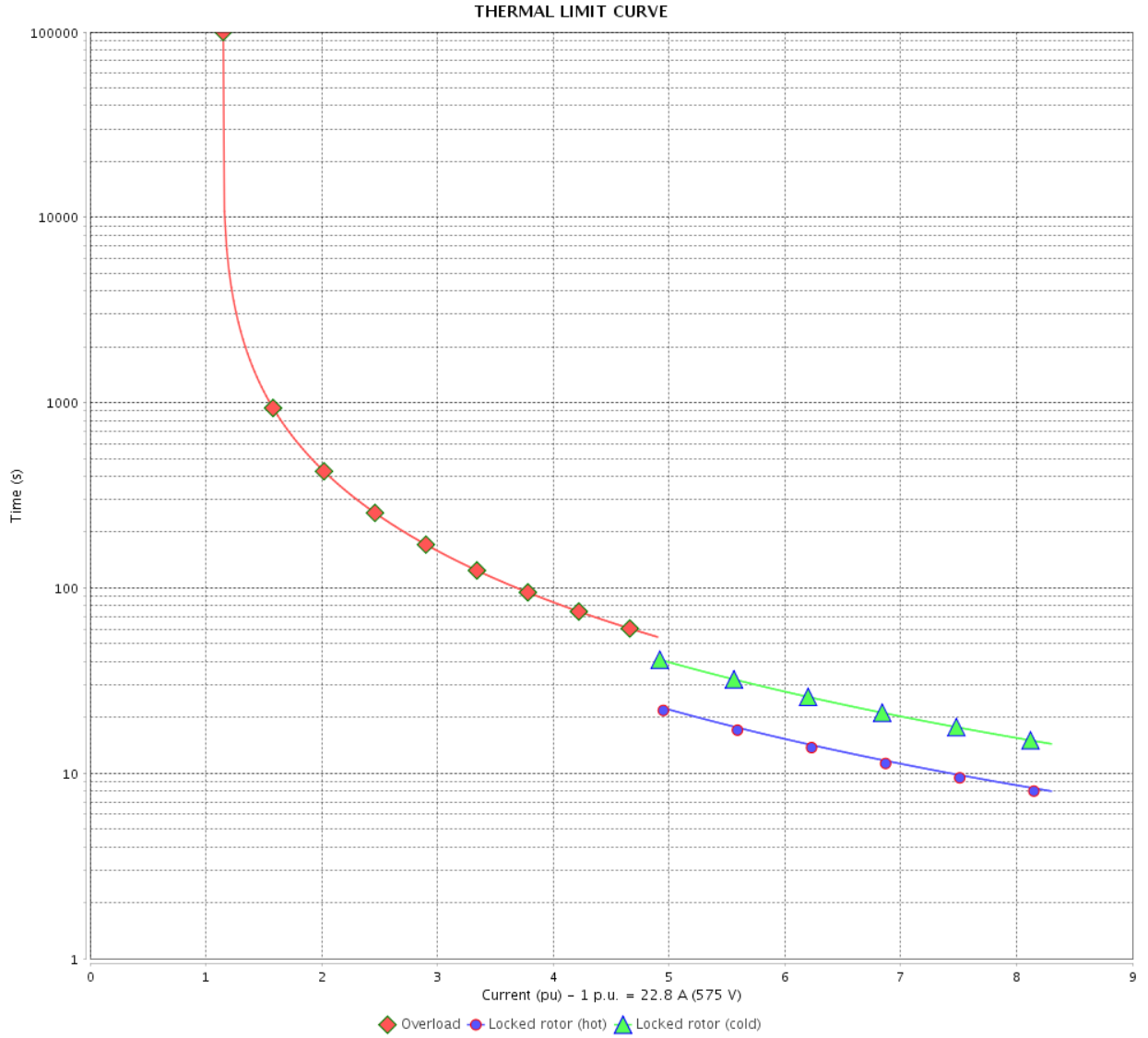
Rev.	Changes Summary	Performed	Checked	Date
Performed by				
Checked by			Page	Revision
Date	14/04/2022		4 / 6	

THERMAL LIMIT CURVE

Three Phase Induction Motor - Squirrel Cage



Customer : _____



Rev.	Changes Summary	Performed	Checked	Date
Performed by		Page 5 / 6		Revision
Checked by				
Date				

VFD OPERATION CURVE

Three Phase Induction Motor - Squirrel Cage

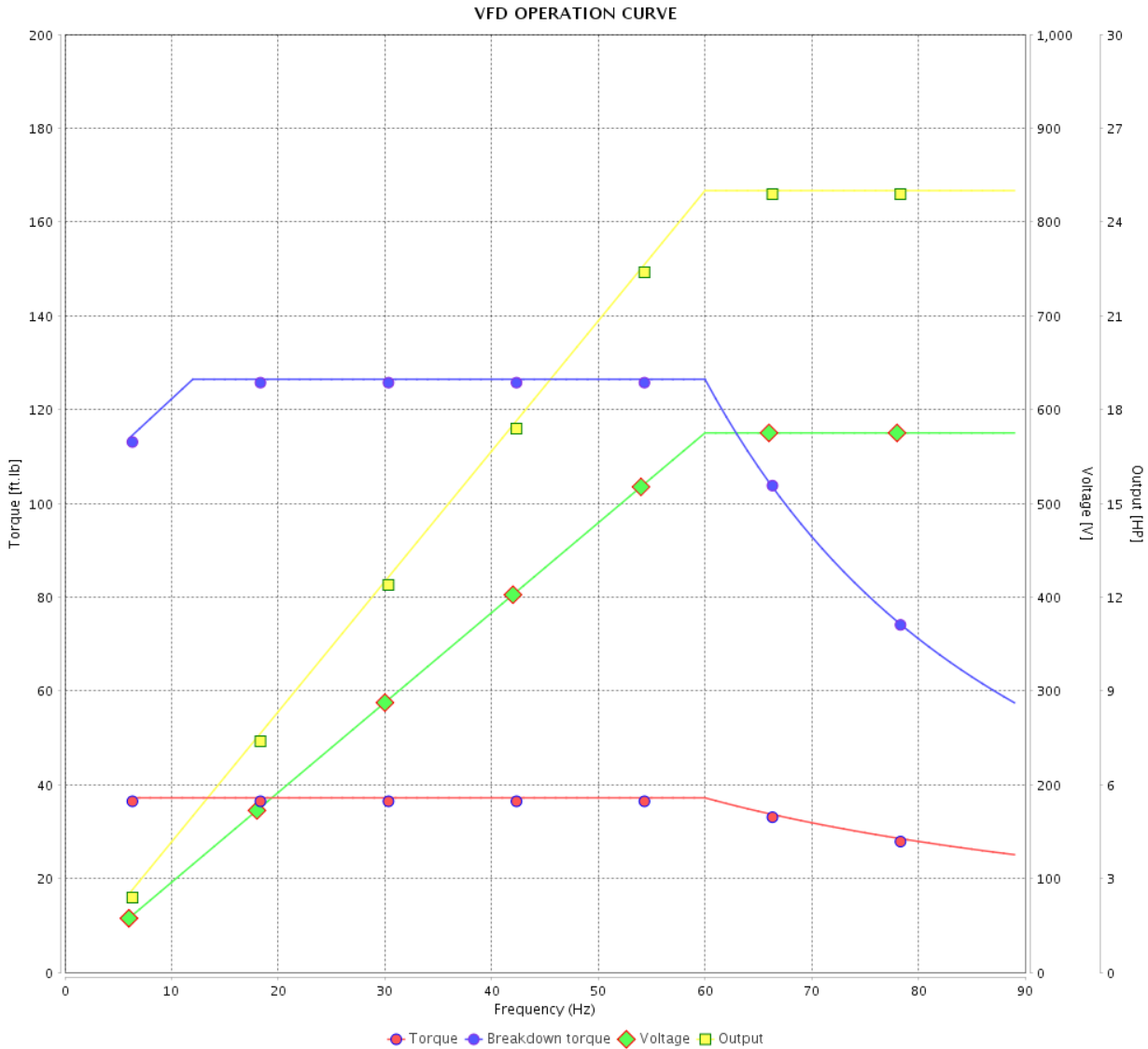


Customer :

Product line : JM Pump NEMA Premium Efficiency Three-Phase

Product code : 13506324

Catalog # : 02536ET3H256JM-S



Performance : 575 V 60 Hz 2P

Rated current : 22.8 A
 LRC : 8.3
 Rated torque : 37.2 ft.lb
 Locked rotor torque : 240 %
 Breakdown torque : 340 %
 Rated speed : 3530 rpm

Moment of inertia (J) : 1.31 sq.ft.lb
 Duty cycle : Cont.(S1)
 Insulation class : F
 Service factor : 1.15
 Temperature rise : 80 K
 Design : A

Rev.	Changes Summary	Performed	Checked	Date
Performed by			Page 6 / 6	Revision
Checked by				
Date	14/04/2022			

1 2 3 4 5 6

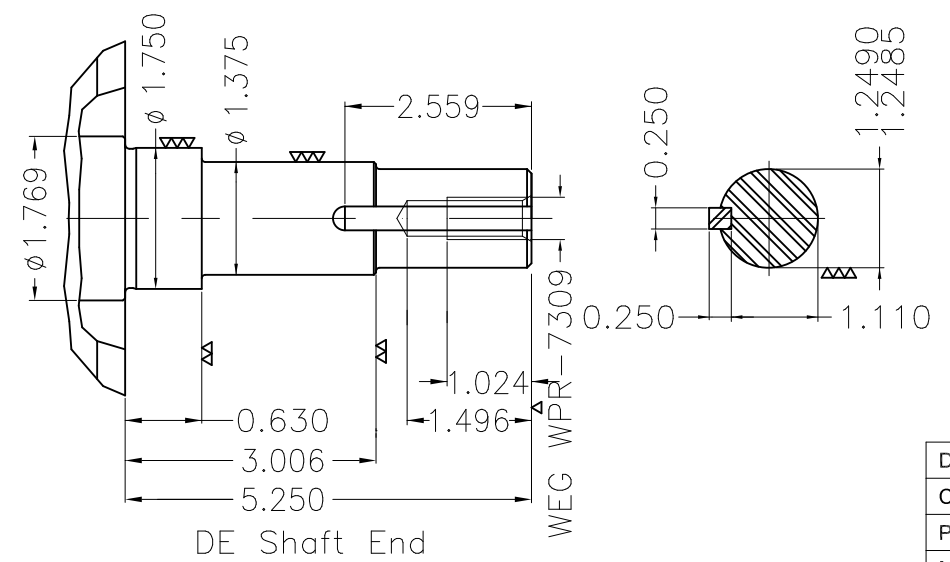
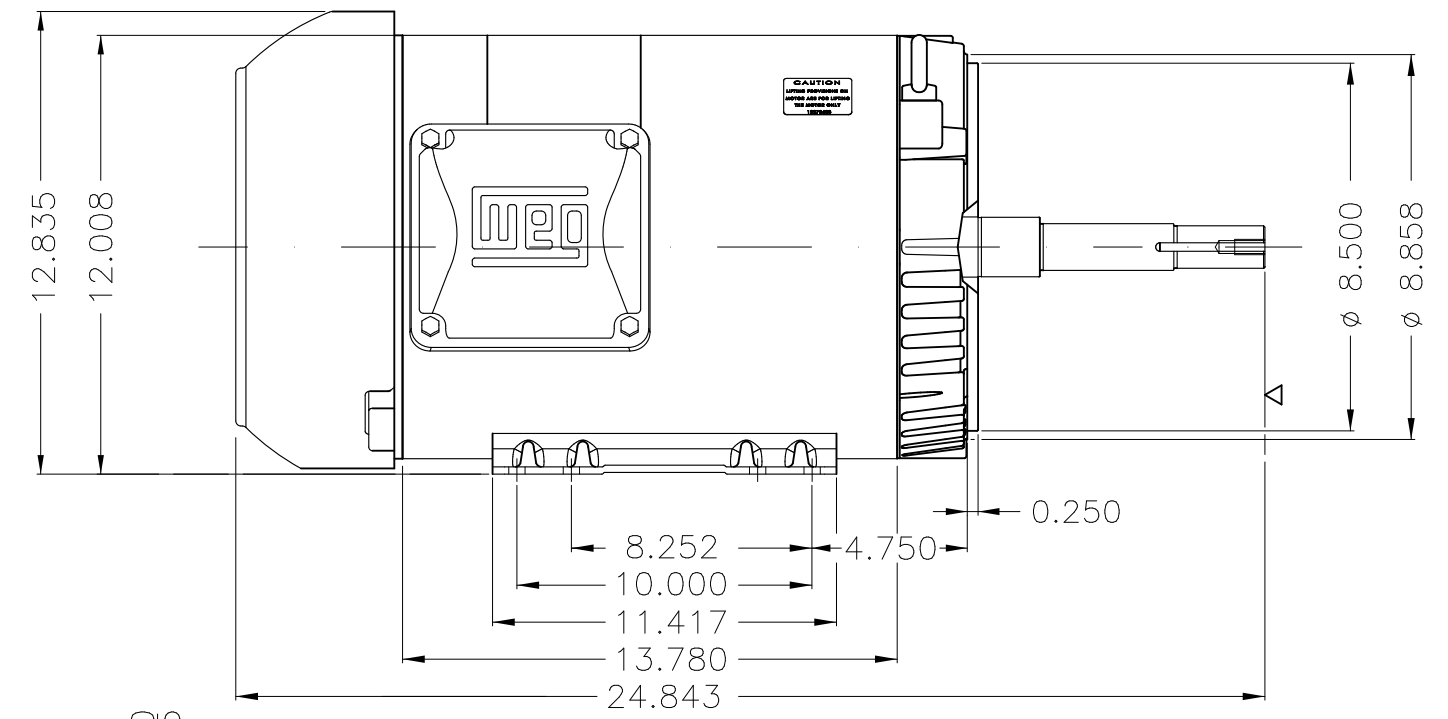
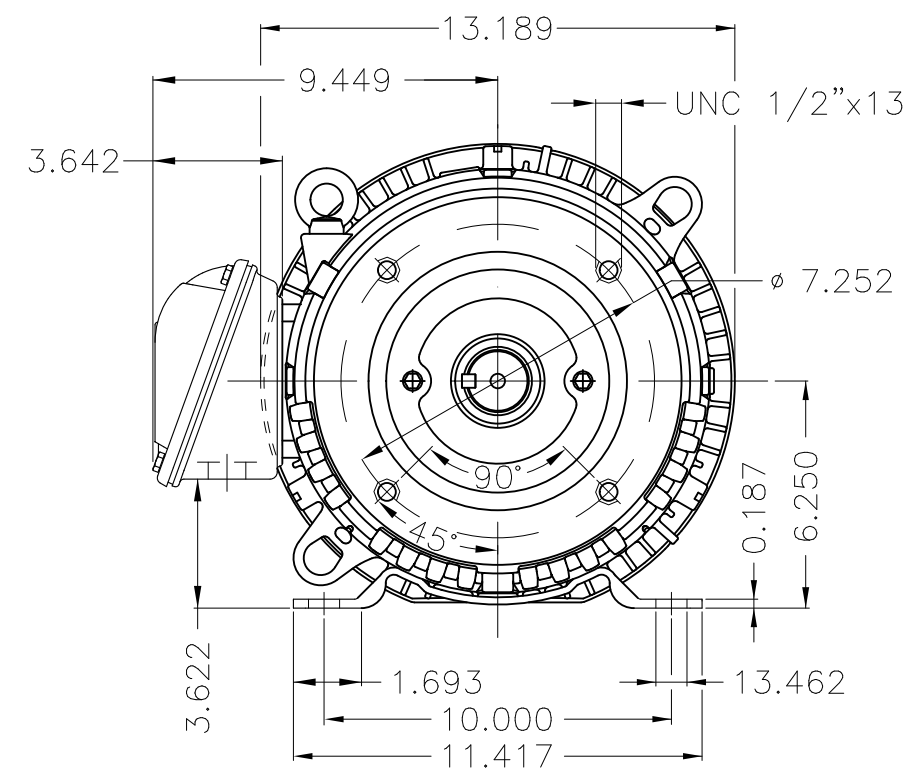
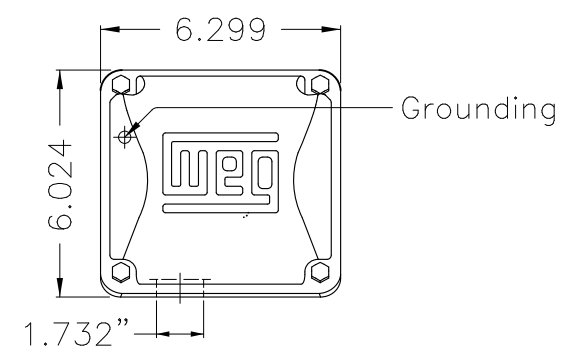
A

B

C

D

E



EUNC 1/2"-13 WEG WPR-7309

Design A										
Color Munsell N 1 matte black										
Painting plan 207N										
Mounting F-1/B34R(D)										
ECM	LOC	SUMMARY OF MODIFICATIONS				EXECUTED	CHECKED	RELEASED	DATE	VER
EXECUTED	PIRBUSER	THREE PH. MOTOR ROLLED STEEL CLOSE COUPLED PUMP JN TYPE PSE 1/2"				PREVIEW	WDD	SHEET	1 / 1	
CHECKED		FRAME 254/6JM IP55 TEFC								
RELEASED										
REL DT.		WMO	Jaragua do Sul	Product Engineering						

25 HP 02 Poles 60 Hz



NEMA
Premium



MADE IN MEXICO

MAT: 13506324 CC029A

W01.TE0IC0X0N

MODEL 02536ET3H256JM-S

14MAR2022 S/N:

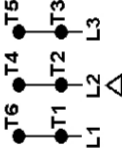
**For 60Hz: Class I, Zone 2, IIC
Class I, Div.2, Gr. A,B,C,D - T3
Div 2 Inverter Duty (SF1.00)**

CT 2:1/VT 1000:1

PH 3	Hz 60	HP 25
FR 254/6JM		KW 18.5
DUTY CONT.		V 575
ALT 1000 m.a.s.l.		A 22.8
INS CL F AT 80K	IP55	SFA 26.2
AMB 40°C	DES A	SF 1.15
ENCL TEFC	CODE J	PF 0.89
		RPM 3530
		NEMA NOM. EFF 91.7%

For safe area-inverter duty motor For use on VPWM 1000:1 VT, 10:1 CT

DE 6309-Z-C3	ODE 6208-Z-C3	MOBIL POLYREX EM	15797h
--------------	---------------	------------------	--------



T1-BLU
T2-WHT
T3-ORG
T4-YEL
T5-BLK
T6-GRY

INTERCHANGE ANY TWO LINE WIRES TO REVERSE THE ROTATION

WARNING: Motor must be grounded in accordance with local and national electrical codes to prevent serious electrical shocks. Disconnect power source before servicing unit.



AVERTISSEMENT: Le moteur doit être mis à la terre

conformément aux codes électriques locaux et nationaux afin d'éviter tout

choc électrique grave. Déconnectez l'alimentation avant l'entretien de la machine.

