

DATA SHEET



Three Phase Induction Motor - Squirrel Cage

| | | | | | | | | | | | | | | | | | | | |
|---|---|----------------------|----------------------|----------------|-----------|----------------|-----------|--------|----------------------|------------------------|--------------|---------|--------------------|------|------|---|------------------|--|--|
| Customer : | | | | | | | | | | | | | | | | | | | |
| Product line : JP Pump NEMA Premium Efficiency Three-Phase | Product code : 13506325 Catalog # : 02536ET3H256JP-S | | | | | | | | | | | | | | | | | | |
| Frame : 254/6JP Output : 25 HP (18.5 kW) Poles : 2 Frequency : 60 Hz Rated voltage : 575 V Rated current : 22.8 A L. R. Amperes : 189 A LRC : 8.3x(Code J) No load current : 8.04 A Rated speed : 3530 rpm Slip : 1.94 % Rated torque : 37.2 ft.lb Locked rotor torque : 240 % Breakdown torque : 340 % Insulation class : F Service factor : 1.15 Moment of inertia (J) : 1.31 sq.ft.lb Design : A | Locked rotor time : 14s (cold) 8s (hot) Temperature rise : 80 K Duty cycle : Cont.(S1) Ambient temperature : -20°C to +40°C Altitude : 1000 m.a.s.l. Protection degree : IP55 Cooling method : IC411 - TEFC Mounting : F-1 Rotation ¹ : Both (CW and CCW) Noise level ² : 75.0 dB(A) Starting method : Direct On Line Approx. weight ³ : 245 lb | | | | | | | | | | | | | | | | | | |
| <table border="1" style="width:100%; border-collapse: collapse;"> <tr> <td>Output</td> <td>25%</td> <td>50%</td> <td>75%</td> <td>100%</td> </tr> <tr> <td>Efficiency (%)</td> <td>90.8</td> <td>91.0</td> <td>91.7</td> <td>91.7</td> </tr> <tr> <td>Power Factor</td> <td>0.50</td> <td>0.77</td> <td>0.85</td> <td>0.89</td> </tr> </table> | Output | 25% | 50% | 75% | 100% | Efficiency (%) | 90.8 | 91.0 | 91.7 | 91.7 | Power Factor | 0.50 | 0.77 | 0.85 | 0.89 | Foundation loads Max. traction : 484 lb Max. compression : 729 lb | | | |
| Output | 25% | 50% | 75% | 100% | | | | | | | | | | | | | | | |
| Efficiency (%) | 90.8 | 91.0 | 91.7 | 91.7 | | | | | | | | | | | | | | | |
| Power Factor | 0.50 | 0.77 | 0.85 | 0.89 | | | | | | | | | | | | | | | |
| <table style="width:100%;"> <tr> <td></td> <td style="text-align:center;"><u>Drive end</u></td> <td style="text-align:center;"><u>Non drive end</u></td> </tr> <tr> <td>Bearing type :</td> <td style="text-align:center;">6309 Z C3</td> <td style="text-align:center;">6208 Z C3</td> </tr> <tr> <td>Sealing :</td> <td style="text-align:center;">V'Ring</td> <td style="text-align:center;">Without Bearing Seal</td> </tr> <tr> <td>Lubrication interval :</td> <td style="text-align:center;">15797 h</td> <td style="text-align:center;">20000 h</td> </tr> <tr> <td>Lubricant amount :</td> <td style="text-align:center;">13 g</td> <td style="text-align:center;">8 g</td> </tr> <tr> <td>Lubricant type :</td> <td colspan="2" style="text-align:center;">Mobil Polyrex EM</td> </tr> </table> | | <u>Drive end</u> | <u>Non drive end</u> | Bearing type : | 6309 Z C3 | 6208 Z C3 | Sealing : | V'Ring | Without Bearing Seal | Lubrication interval : | 15797 h | 20000 h | Lubricant amount : | 13 g | 8 g | Lubricant type : | Mobil Polyrex EM | | |
| | <u>Drive end</u> | <u>Non drive end</u> | | | | | | | | | | | | | | | | | |
| Bearing type : | 6309 Z C3 | 6208 Z C3 | | | | | | | | | | | | | | | | | |
| Sealing : | V'Ring | Without Bearing Seal | | | | | | | | | | | | | | | | | |
| Lubrication interval : | 15797 h | 20000 h | | | | | | | | | | | | | | | | | |
| Lubricant amount : | 13 g | 8 g | | | | | | | | | | | | | | | | | |
| Lubricant type : | Mobil Polyrex EM | | | | | | | | | | | | | | | | | | |
| Notes | | | | | | | | | | | | | | | | | | | |
| This revision replaces and cancel the previous one, which must be eliminated. (1) Looking the motor from the shaft end. (2) Measured at 1m and with tolerance of +3dB(A). (3) Approximate weight subject to changes after manufacturing process. (4) At 100% of full load. | These are average values based on tests with sinusoidal power supply, subject to the tolerances stipulated in NEMA MG-1. | | | | | | | | | | | | | | | | | | |
| Rev. | Changes Summary | Performed | Checked | Date | | | | | | | | | | | | | | | |
| Performed by | | | | | | | | | | | | | | | | | | | |
| Checked by | | | Page | Revision | | | | | | | | | | | | | | | |
| Date | 14/04/2022 | | 1 / 6 | | | | | | | | | | | | | | | | |

TORQUE AND CURRENT VS SPEED CURVE

Three Phase Induction Motor - Squirrel Cage



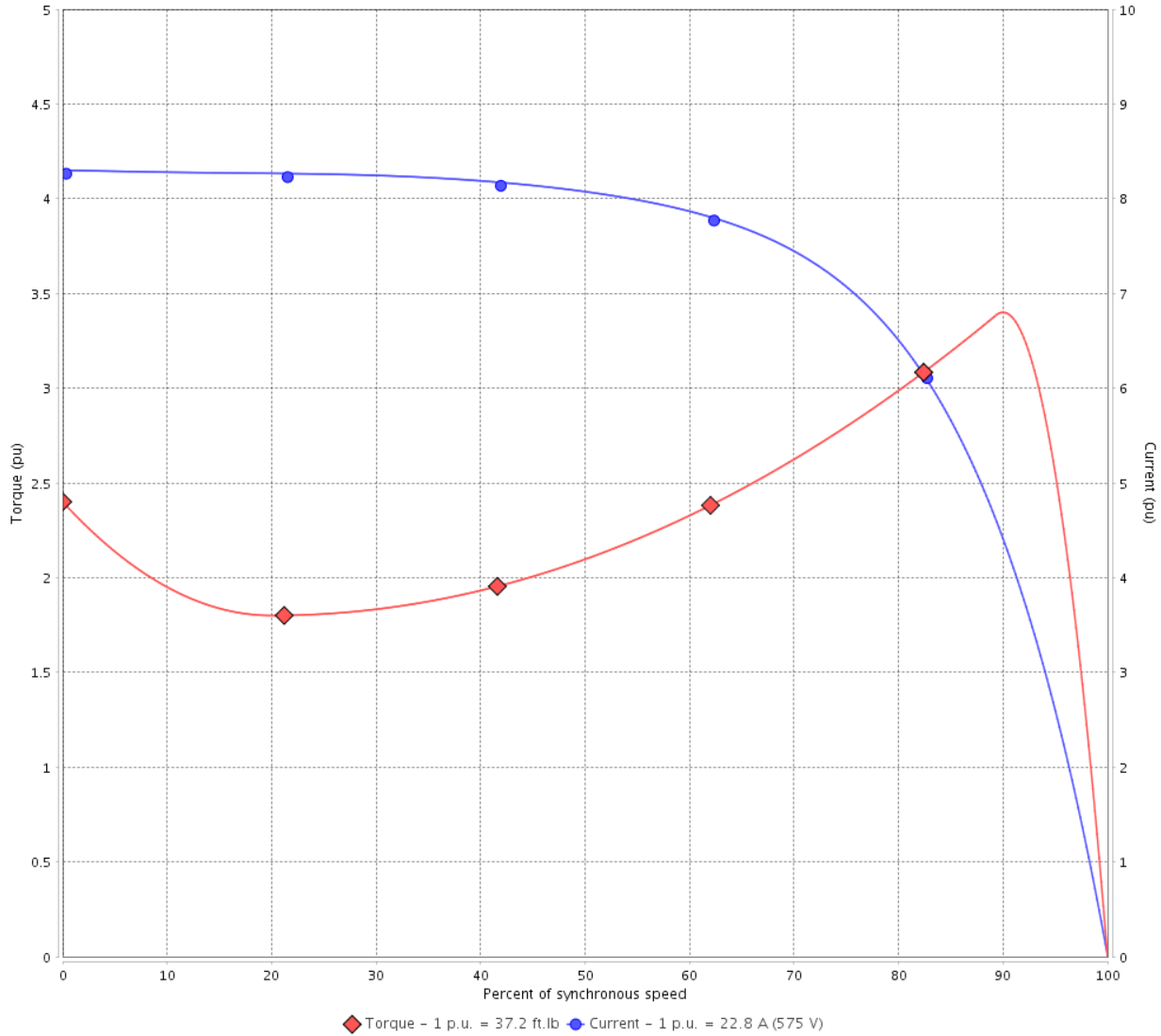
Customer :

Product line : JP Pump NEMA Premium
Efficiency Three-Phase

Product code : 13506325

Catalog # : 02536ET3H256JP-S

TORQUE AND CURRENT VS SPEED CURVE



Performance : 575 V 60 Hz 2P

| | | | |
|---------------------|--------------|-----------------------|-----------------|
| Rated current | : 22.8 A | Moment of inertia (J) | : 1.31 sq.ft.lb |
| LRC | : 8.3 | Duty cycle | : Cont.(S1) |
| Rated torque | : 37.2 ft.lb | Insulation class | : F |
| Locked rotor torque | : 240 % | Service factor | : 1.15 |
| Breakdown torque | : 340 % | Temperature rise | : 80 K |
| Rated speed | : 3530 rpm | Design | : A |

Locked rotor time : 14s (cold) 8s (hot)

| Rev. | Changes Summary | Performed | Checked | Date |
|--------------|-----------------|-----------|---------------|----------|
| | | | | |
| Performed by | | | Page 2 / 6 | Revision |
| Checked by | | | | |
| Date | 14/04/2022 | | | |

LOAD PERFORMANCE CURVE

Three Phase Induction Motor - Squirrel Cage

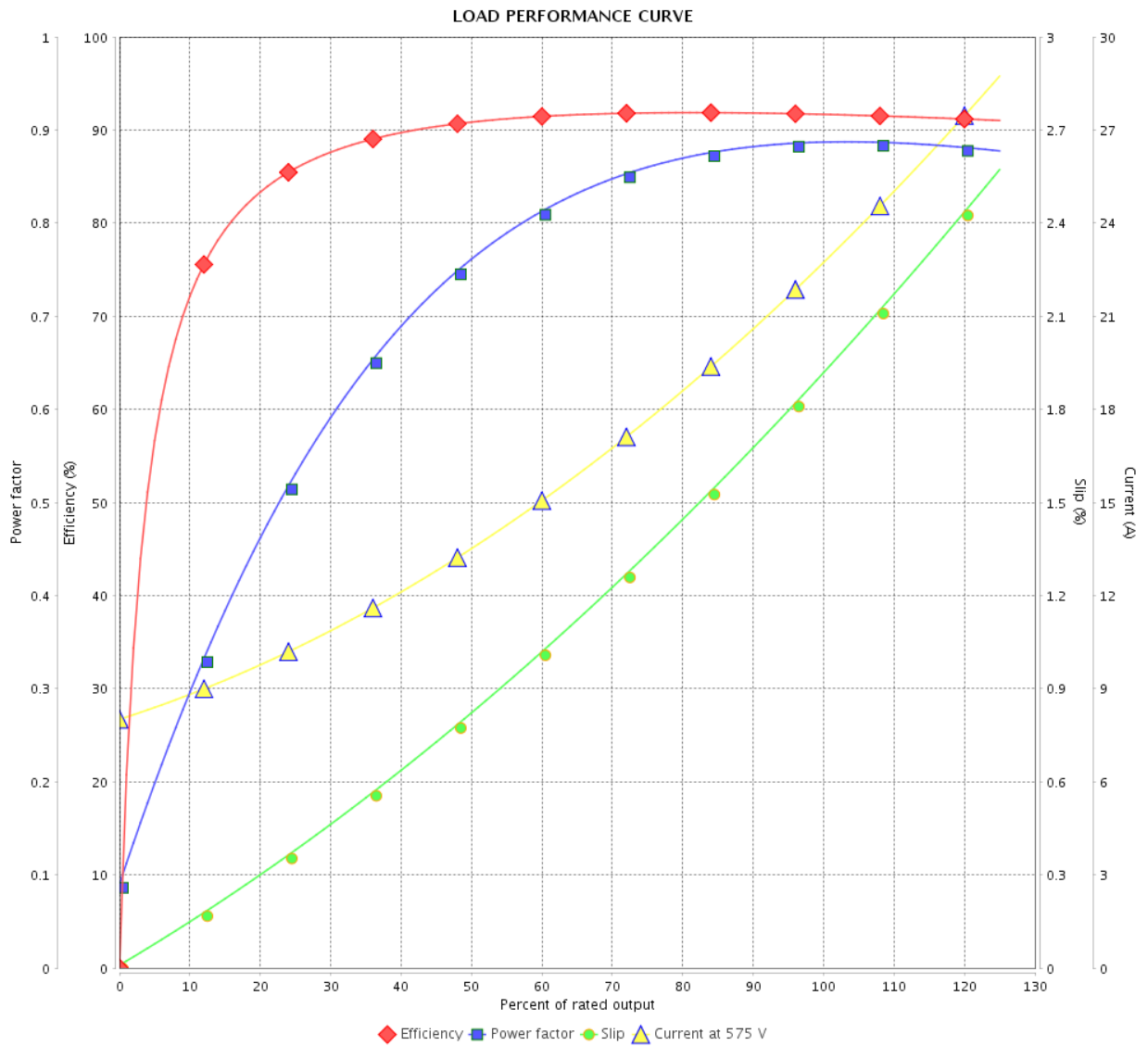


Customer : _____

Product line : JP Pump NEMA Premium
Efficiency Three-Phase

Product code : 13506325

Catalog # : 02536ET3H256JP-S



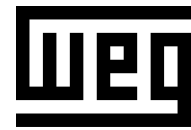
Performance : 575 V 60 Hz 2P

Rated current : 22.8 A
 LRC : 8.3
 Rated torque : 37.2 ft.lb
 Locked rotor torque : 240 %
 Breakdown torque : 340 %
 Rated speed : 3530 rpm

Moment of inertia (J) : 1.31 sq.ft.lb
 Duty cycle : Cont.(S1)
 Insulation class : F
 Service factor : 1.15
 Temperature rise : 80 K
 Design : A

| Rev. | Changes Summary | Performed | Checked | Date |
|--------------|-----------------|------------|---------|----------|
| | | | | |
| Performed by | | Page | | Revision |
| Checked by | | 3 / 6 | | |
| Date | | 14/04/2022 | | |

THERMAL LIMIT CURVE



Three Phase Induction Motor - Squirrel Cage

Customer :

Product line : JP Pump NEMA Premium
Efficiency Three-Phase

Product code : 13506325

Catalog # : 02536ET3H256JP-S

Performance : 575 V 60 Hz 2P

Rated current : 22.8 A
LRC : 8.3
Rated torque : 37.2 ft.lb
Locked rotor torque : 240 %
Breakdown torque : 340 %
Rated speed : 3530 rpm

Moment of inertia (J) : 1.31 sq.ft.lb
Duty cycle : Cont.(S1)
Insulation class : F
Service factor : 1.15
Temperature rise : 80 K
Design : A

Heating constant

Cooling constant

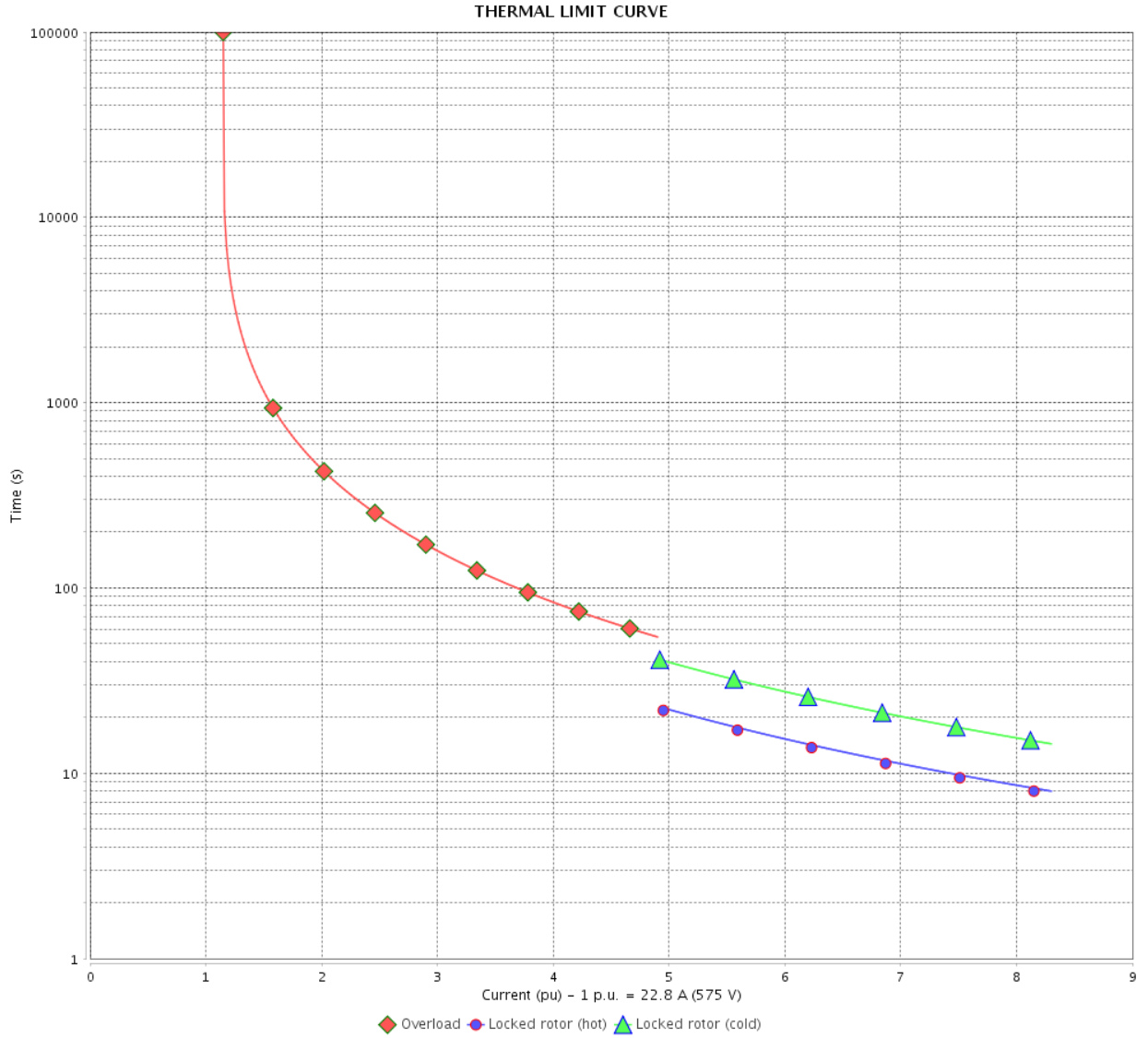
| Rev. | Changes Summary | Performed | Checked | Date |
|--------------|-----------------|-----------|---------|----------|
| | | | | |
| Performed by | | | | |
| Checked by | | | Page | Revision |
| Date | 14/04/2022 | | 4 / 6 | |

THERMAL LIMIT CURVE

Three Phase Induction Motor - Squirrel Cage



Customer : _____



| Rev. | Changes Summary | Performed | Checked | Date |
|--------------|-----------------|---------------|---------|----------|
| | | | | |
| Performed by | | Page 5 / 6 | | Revision |
| Checked by | | | | |
| Date | | | | |

VFD OPERATION CURVE

Three Phase Induction Motor - Squirrel Cage

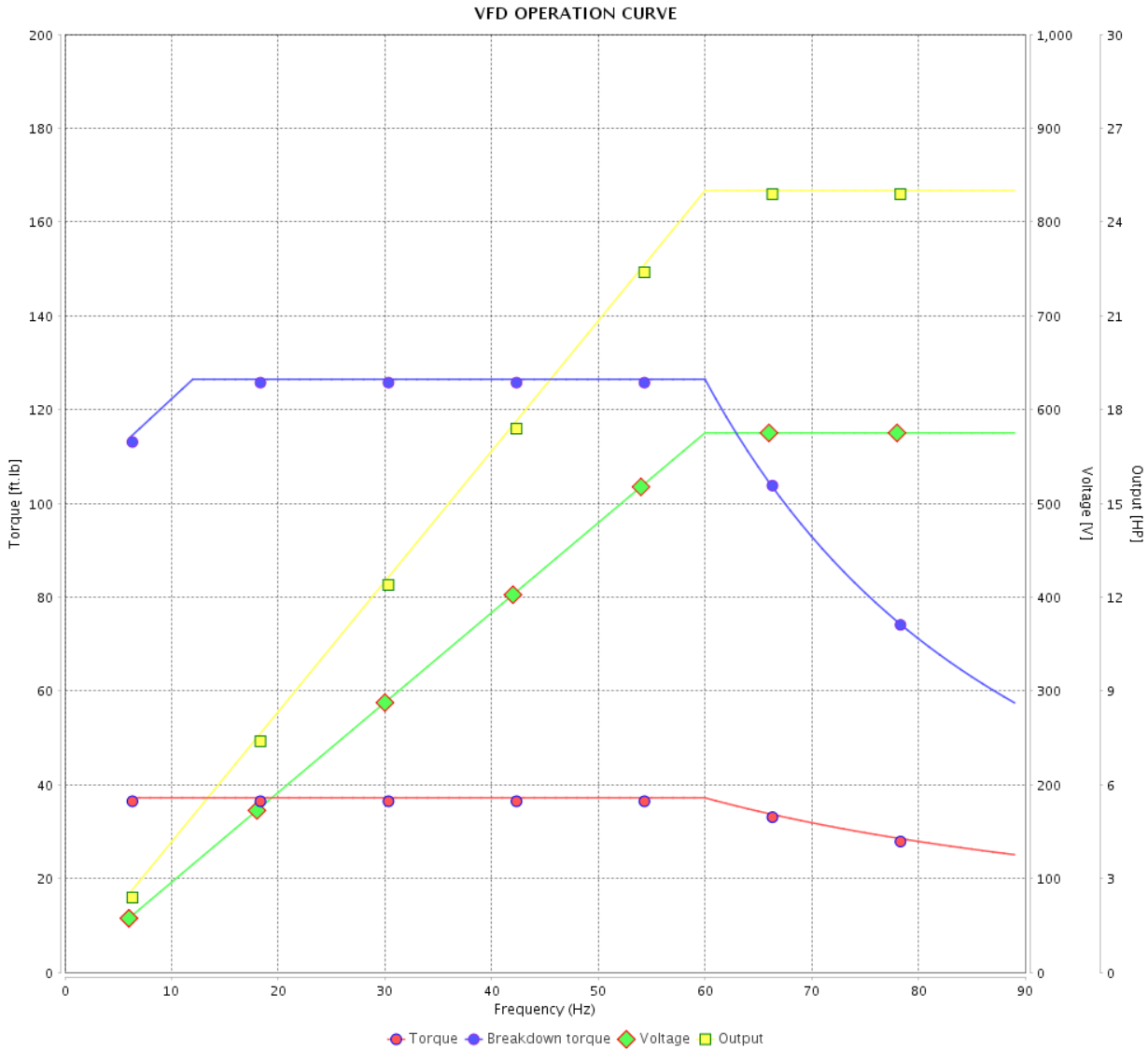


Customer : _____

Product line : JP Pump NEMA Premium Efficiency Three-Phase

Product code : 13506325

Catalog # : 02536ET3H256JP-S



Performance : 575 V 60 Hz 2P

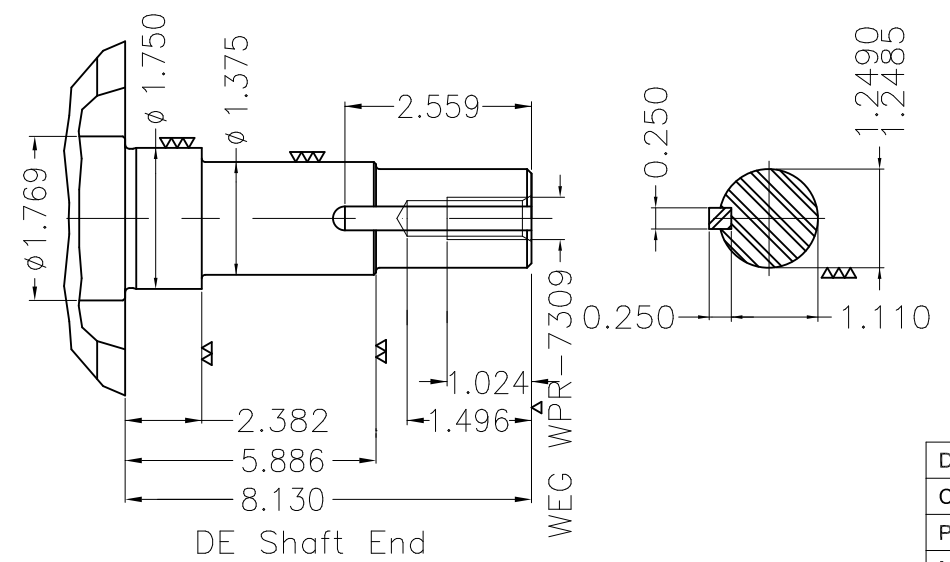
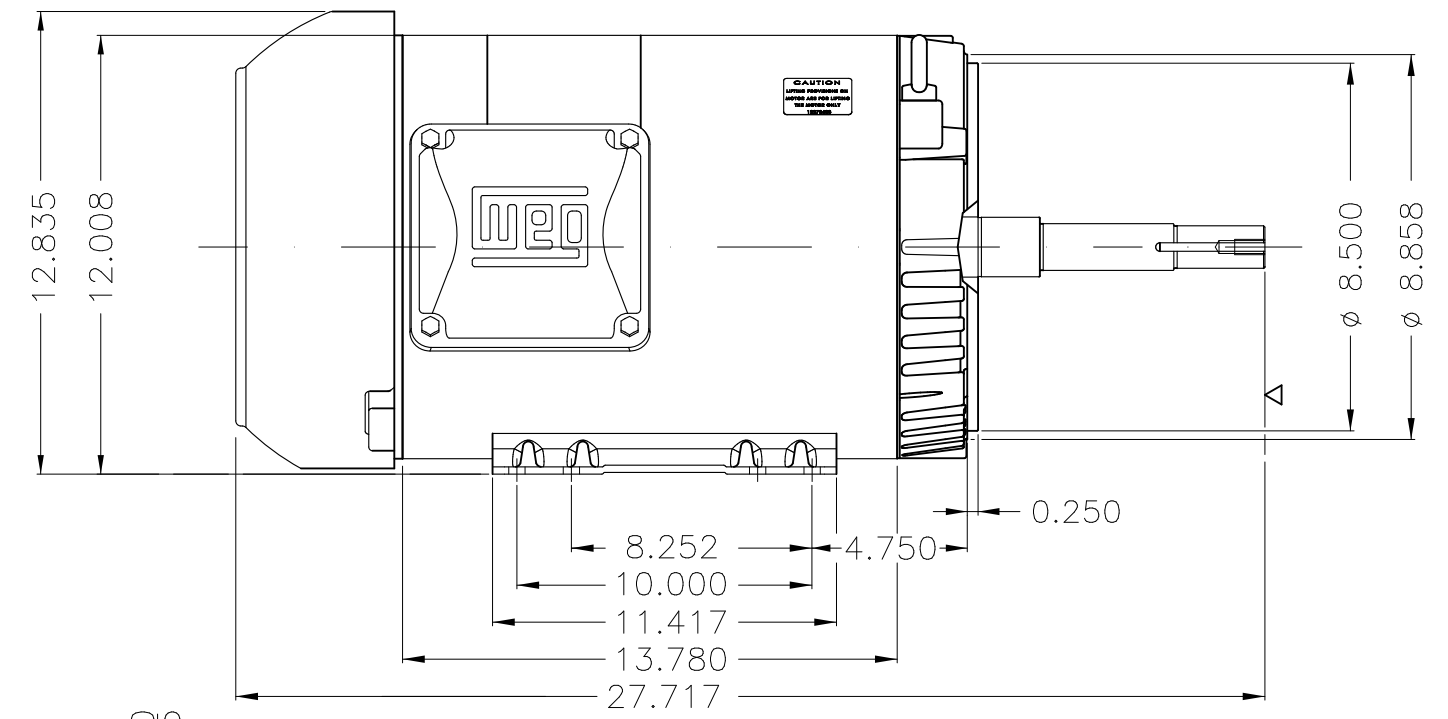
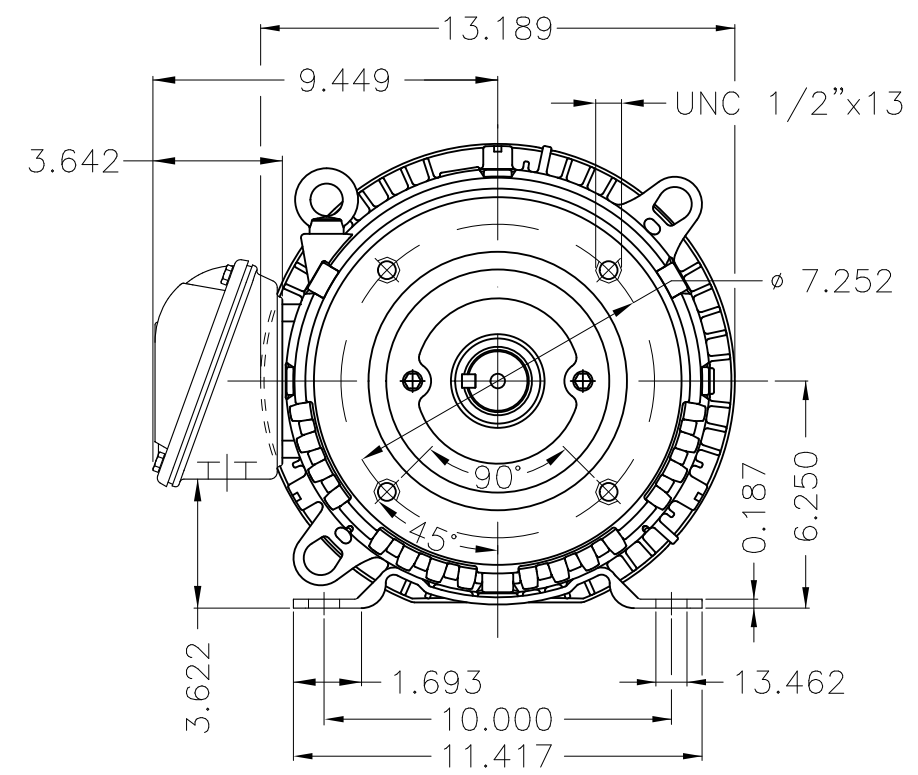
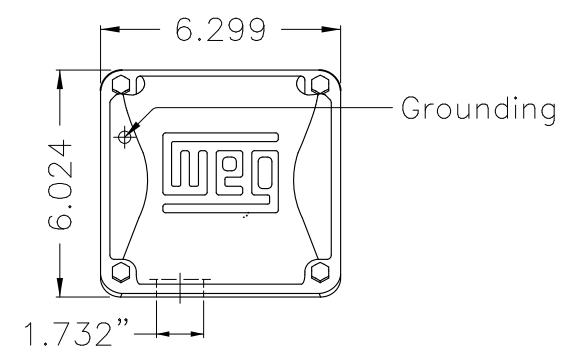
Rated current : 22.8 A
 LRC : 8.3
 Rated torque : 37.2 ft.lb
 Locked rotor torque : 240 %
 Breakdown torque : 340 %
 Rated speed : 3530 rpm

Moment of inertia (J) : 1.31 sq.ft.lb
 Duty cycle : Cont.(S1)
 Insulation class : F
 Service factor : 1.15
 Temperature rise : 80 K
 Design : A

| Rev. | Changes Summary | Performed | Checked | Date |
|--------------|-----------------|-----------|---------------|----------|
| | | | | |
| Performed by | | | Page 6 / 6 | Revision |
| Checked by | | | | |
| Date | 14/04/2022 | | | |

1 2 3 4 5 6

A
B
C
D
E



EUNC 1/2"-13 WEG WPR-7309

DE Shaft End

| | | | | | | | | | |
|-------------------------------|----------|---|----------------|---------------------|----------|---------|----------|------|-----|
| Design A | | | | | | | | | |
| Color Munsell N 1 matte black | | | | | | | | | |
| Painting plan 207N | | | | | | | | | |
| Mounting F-1/B34R(D) | | | | | | | | | |
| | | | | | | | | | |
| | | | | | | | | | |
| ECM | LOC | SUMMARY OF MODIFICATIONS | | | EXECUTED | CHECKED | RELEASED | DATE | VER |
| EXECUTED | PIRBUSER | THREE PH. MOTOR ROLLED STEEL CLOSE COUPLED PUMP JP 50 DE PREL ETX | | | | | | | |
| CHECKED | | FRAME 254/6JP IP55 TEFC | | | | | | | |
| RELEASED | | | | | | | | | |
| REL DT. | | WMO | Jaragua do Sul | Product Engineering | | | | | |

25 HP 02 Poles 60 Hz

Dimensions in inches XME A3

