

DATA SHEET



Three Phase Induction Motor - Squirrel Cage

Customer :				
Product line	: NEMA Premium Efficiency Three-Phase			
Product code :	11360154			
Catalog # :	02536XT3H284TS			
Frame : 284TS Output : 25 HP (18.5 kW) Poles : 2 Frequency : 60 Hz Rated voltage : 575 V Rated current : 22.9 A L. R. Amperes : 153 A LRC : 6.7x(Code G) No load current : 5.20 A Rated speed : 3545 rpm Slip : 1.53 % Rated torque : 37.0 ft.lb Locked rotor torque : 240 % Breakdown torque : 240 % Insulation class : F Service factor : 1.15 Moment of inertia (J) : 2.58 sq.ft.lb Design : B	Locked rotor time : 104s (cold) 58s (hot) Temperature rise : 80 K Duty cycle : Cont.(S1) Ambient temperature : -20°C to +40°C Altitude : 1000 m.a.s.l. Protection degree : IP55 Cooling method : IC411 - TEFC Mounting : F-1 Rotation ¹ : Both (CW and CCW) Noise level ² : 75.0 dB(A) Starting method : Direct On Line Approx. weight ³ : 463 lb			
Output	25% 50% 75% 100%			
Efficiency (%)	91.5 91.7 92.4 92.4			
Power Factor	0.57 0.78 0.85 0.88			
Foundation loads				
Max. traction	: 156 lb			
Max. compression	: 619 lb			
Bearing type	: <u>Drive end</u> 6311 2RS C3 <u>Non drive end</u> 6211 2RS C3			
Sealing	: Oil Seal Lip Seal			
Lubrication interval	: - -			
Lubricant amount	: - -			
Lubricant type	: POLYREA ESTER OIL (WT/ ENS)			
Notes				
This revision replaces and cancel the previous one, which must be eliminated. (1) Looking the motor from the shaft end. (2) Measured at 1m and with tolerance of +3dB(A). (3) Approximate weight subject to changes after manufacturing process. (4) At 100% of full load.				
These are average values based on tests with sinusoidal power supply, subject to the tolerances stipulated in NEMA MG-1.				
Rev.	Changes Summary	Performed	Checked	Date
Performed by				
Checked by			Page	Revision
Date	14/04/2022		1 / 7	

DATA SHEET

Three Phase Induction Motor - Squirrel Cage



Customer : _____

Thermal protection

ID	Application	Type	Quantity	Sensing Temperature
1	Winding	Thermostat - 2 wires	1 x Phase	155 °C

Rev.	Changes Summary	Performed	Checked	Date
Performed by				
Checked by			Page	Revision
Date	14/04/2022		2 / 7	

TORQUE AND CURRENT VS SPEED CURVE



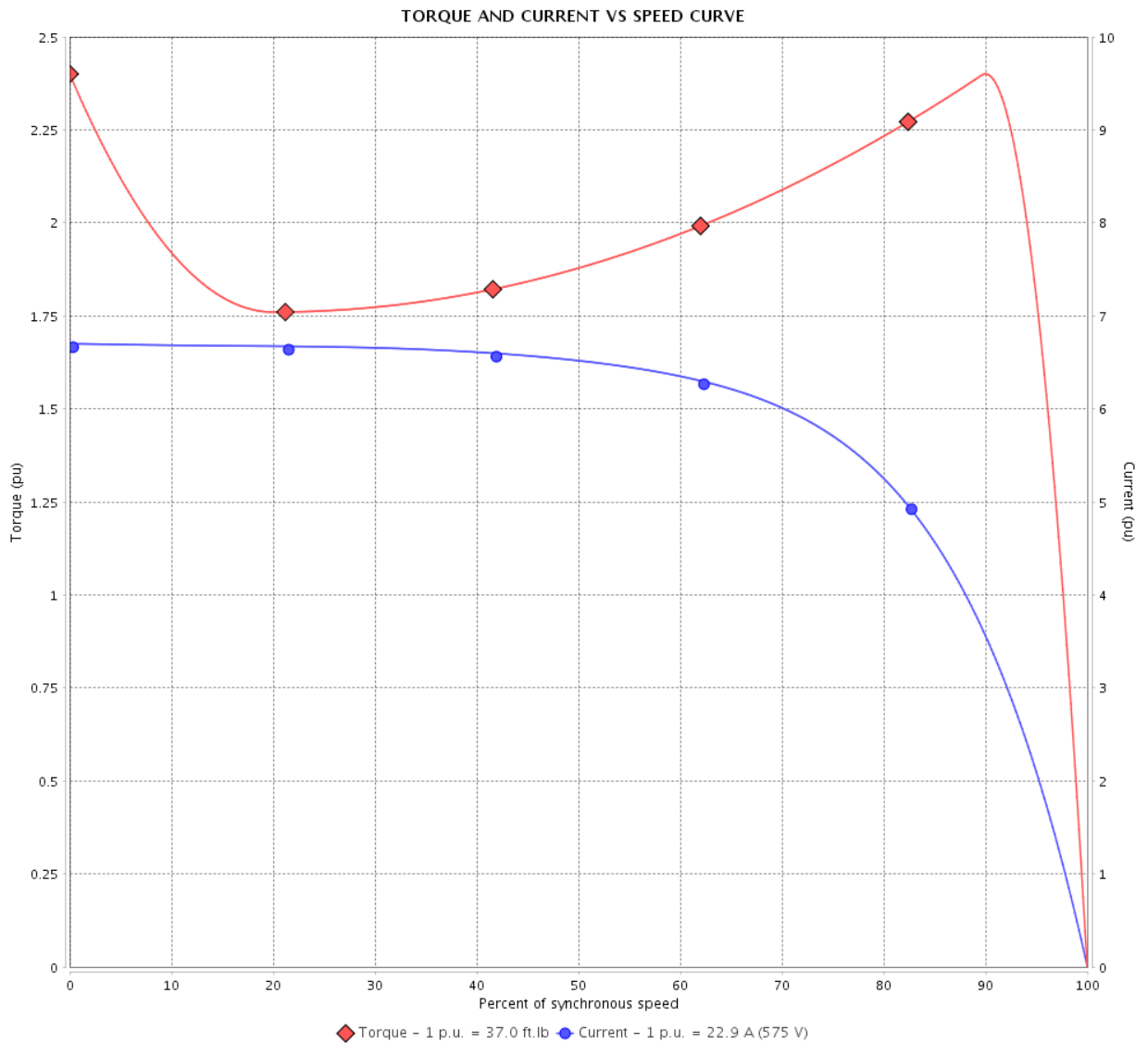
Three Phase Induction Motor - Squirrel Cage

Customer :

Product line : NEMA Premium Efficiency Three-Phase

Product code : 11360154

Catalog # : 02536XT3H284TS



Performance : 575 V 60 Hz 2P

Rated current	: 22.9 A	Moment of inertia (J)	: 2.58 sq.ft.lb
LRC	: 6.7	Duty cycle	: Cont.(S1)
Rated torque	: 37.0 ft.lb	Insulation class	: F
Locked rotor torque	: 240 %	Service factor	: 1.15
Breakdown torque	: 240 %	Temperature rise	: 80 K
Rated speed	: 3545 rpm	Design	: B

Locked rotor time : 104s (cold) 58s (hot)

Rev.	Changes Summary	Performed	Checked	Date
Performed by			Page 3 / 7	Revision
Checked by				
Date	14/04/2022			

LOAD PERFORMANCE CURVE

Three Phase Induction Motor - Squirrel Cage



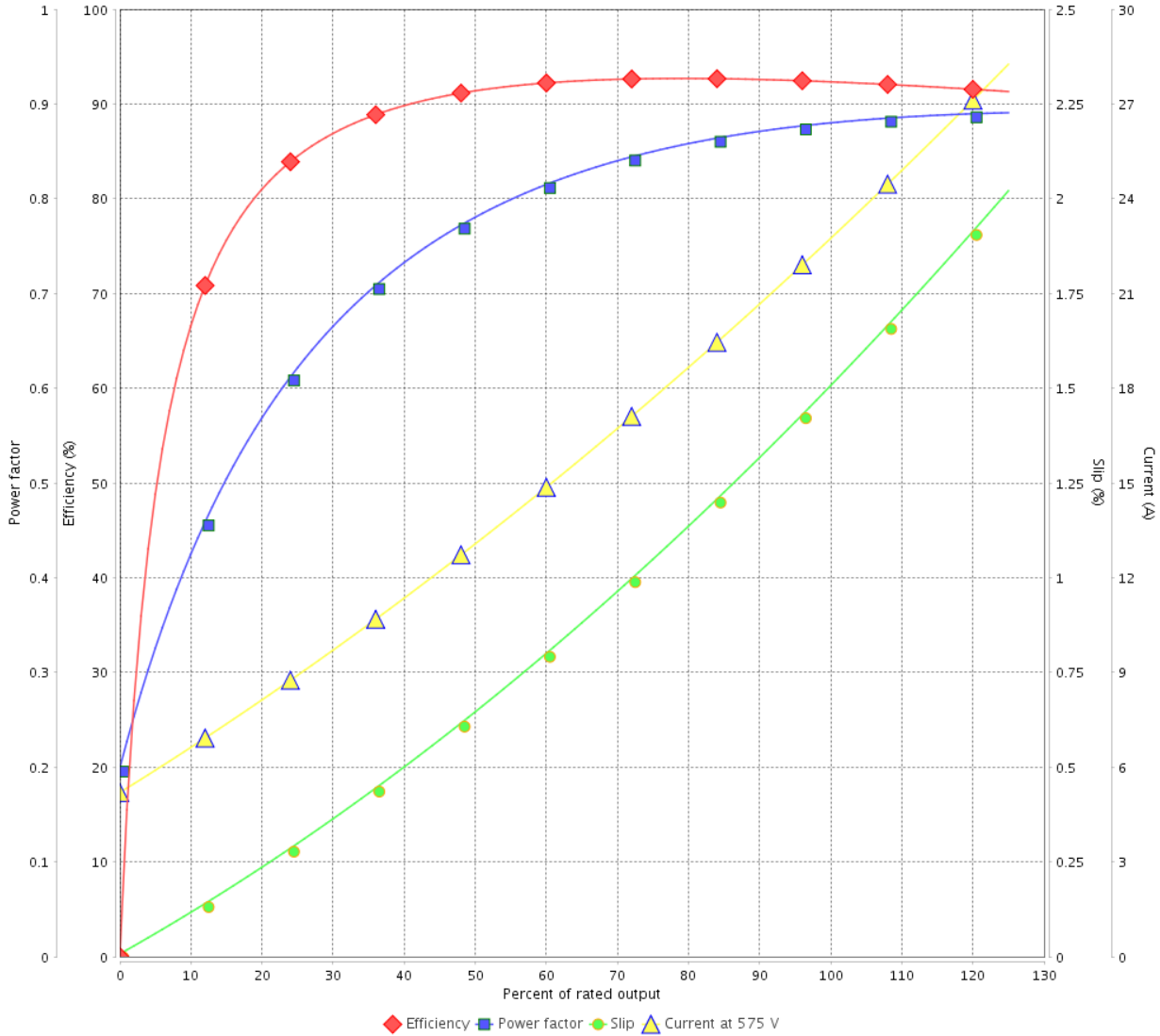
Customer :

Product line : NEMA Premium Efficiency Three-Phase

Product code : 11360154

Catalog # : 02536XT3H284TS

LOAD PERFORMANCE CURVE



Performance : 575 V 60 Hz 2P

Rated current : 22.9 A
 LRC : 6.7
 Rated torque : 37.0 ft.lb
 Locked rotor torque : 240 %
 Breakdown torque : 240 %
 Rated speed : 3545 rpm

Moment of inertia (J) : 2.58 sq.ft.lb
 Duty cycle : Cont.(S1)
 Insulation class : F
 Service factor : 1.15
 Temperature rise : 80 K
 Design : B

Rev.	Changes Summary	Performed	Checked	Date
Performed by			Page 4 / 7	Revision
Checked by				
Date	14/04/2022			

THERMAL LIMIT CURVE

Three Phase Induction Motor - Squirrel Cage



Customer :

Product line : NEMA Premium Efficiency Three-Phase

Product code : 11360154

Catalog # : 02536XT3H284TS

Performance : 575 V 60 Hz 2P

Rated current : 22.9 A
LRC : 6.7
Rated torque : 37.0 ft.lb
Locked rotor torque : 240 %
Breakdown torque : 240 %
Rated speed : 3545 rpm

Moment of inertia (J) : 2.58 sq.ft.lb
Duty cycle : Cont.(S1)
Insulation class : F
Service factor : 1.15
Temperature rise : 80 K
Design : B

Heating constant

Cooling constant

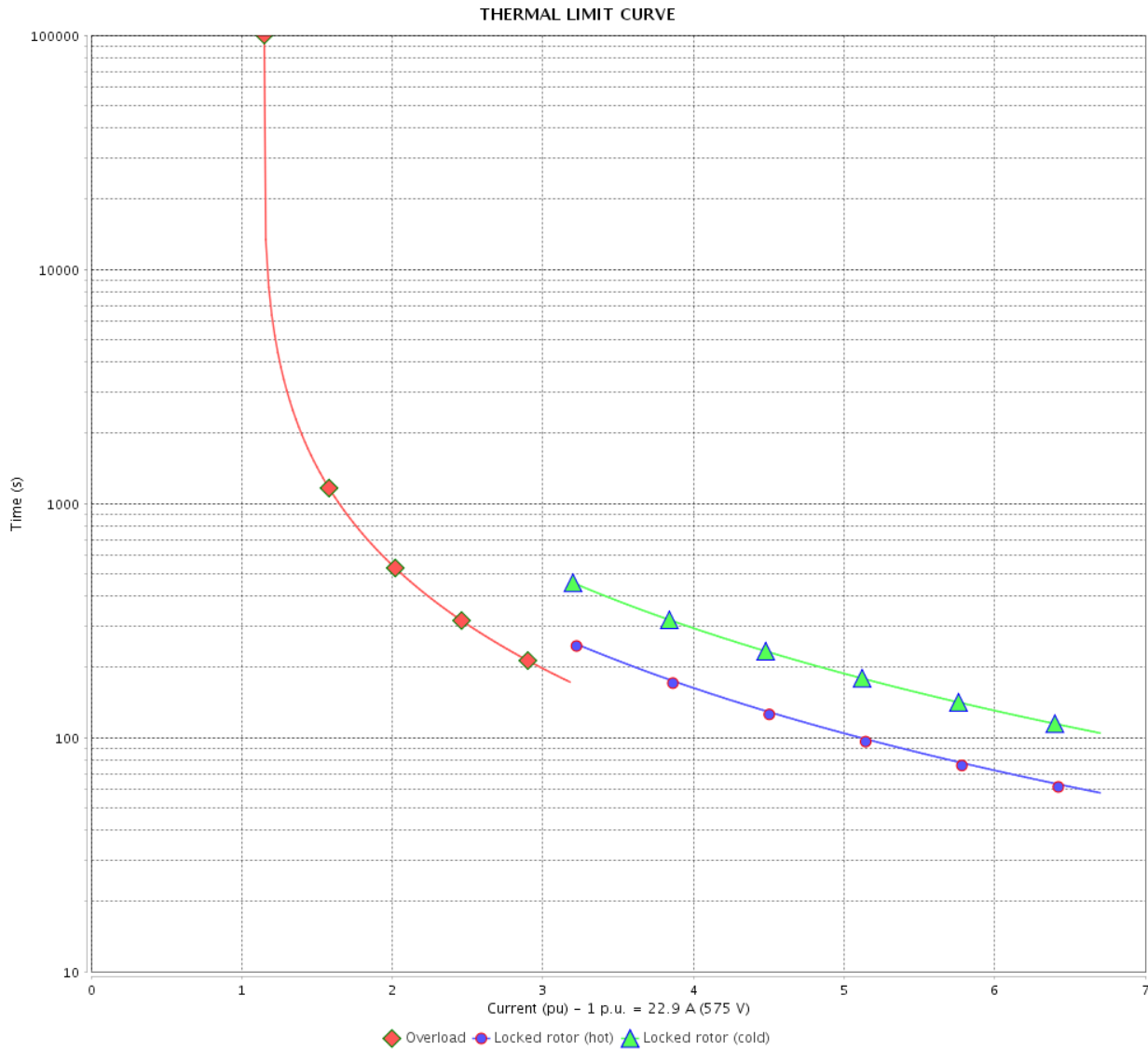
Rev.	Changes Summary	Performed	Checked	Date
Performed by				
Checked by			Page	Revision
Date	14/04/2022		5 / 7	

THERMAL LIMIT CURVE

Three Phase Induction Motor - Squirrel Cage



Customer : _____



Rev.	Changes Summary	Performed	Checked	Date
Performed by		Page 6 / 7		Revision
Checked by				
Date				

VFD OPERATION CURVE

Three Phase Induction Motor - Squirrel Cage

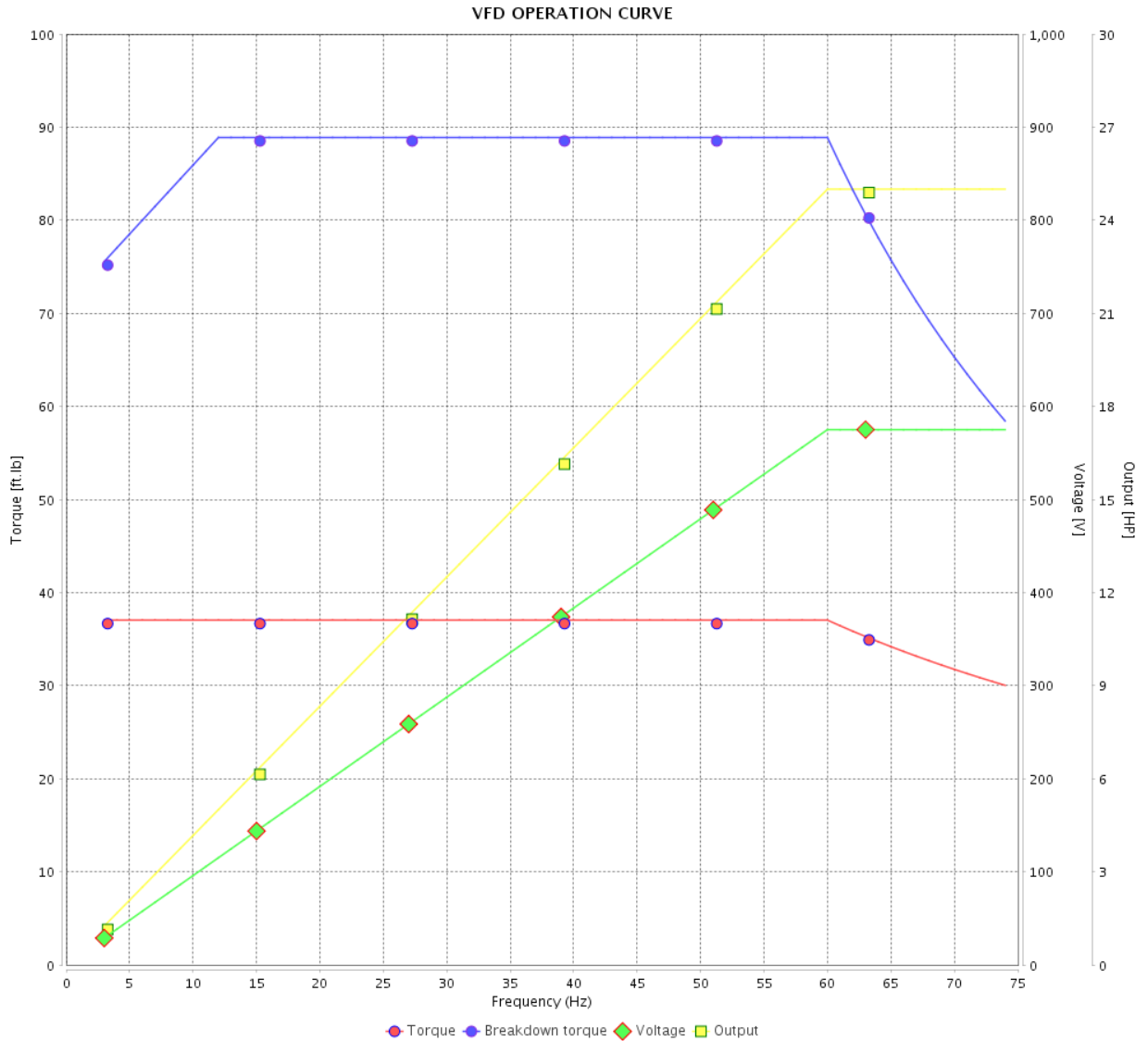


Customer :

Product line : NEMA Premium Efficiency Three-Phase

Product code : 11360154

Catalog # : 02536XT3H284TS

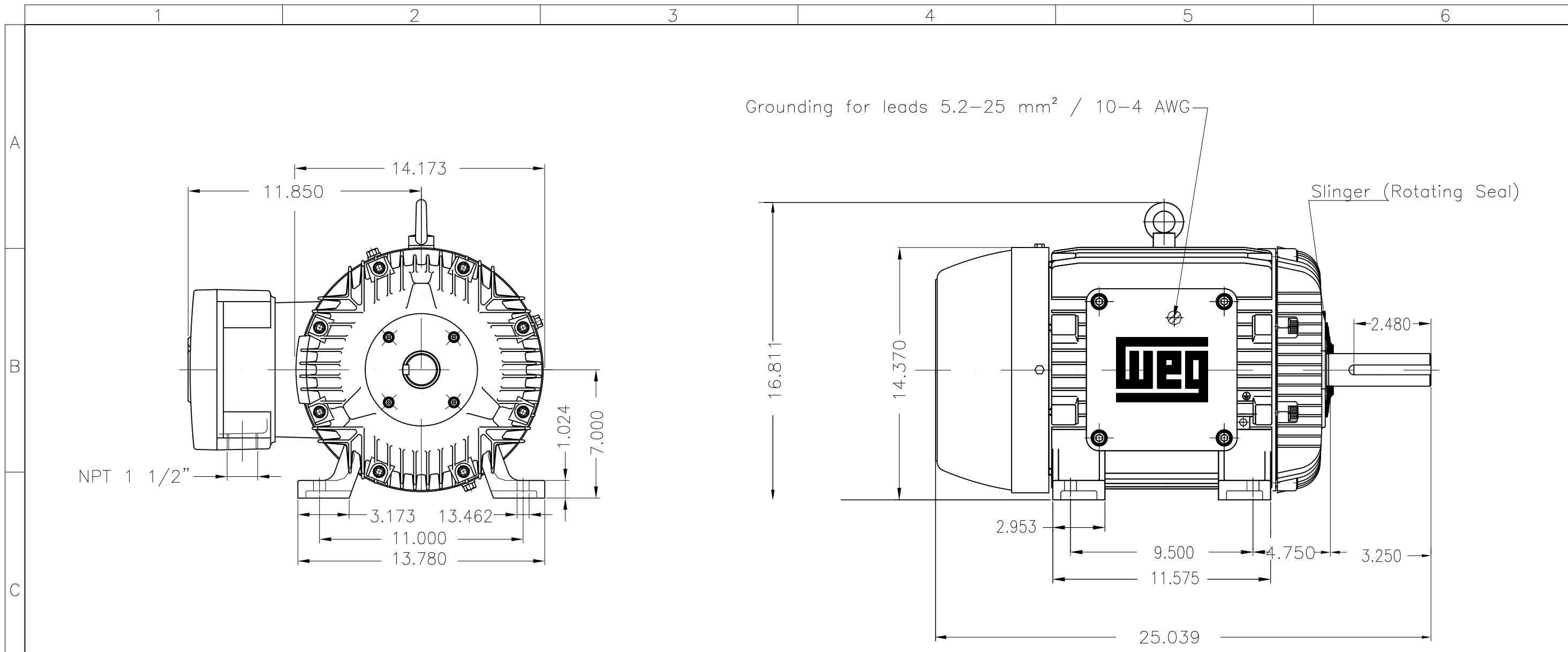


Performance : 575 V 60 Hz 2P

Rated current : 22.9 A
 LRC : 6.7
 Rated torque : 37.0 ft.lb
 Locked rotor torque : 240 %
 Breakdown torque : 240 %
 Rated speed : 3545 rpm

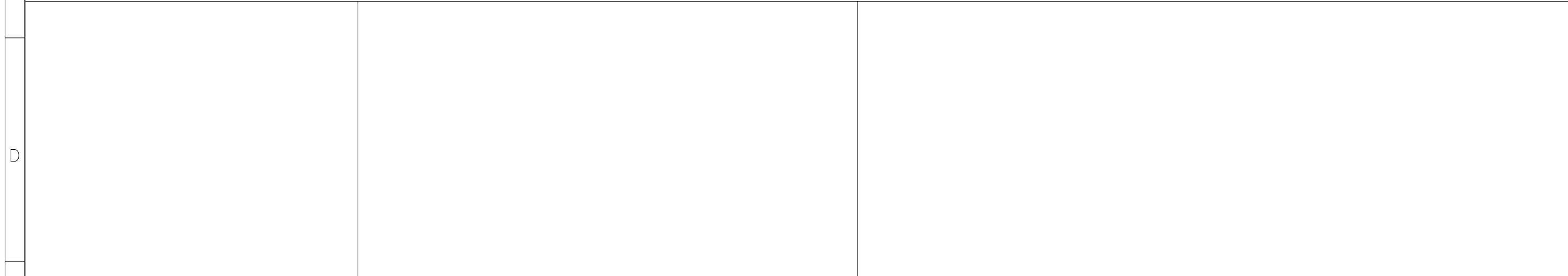
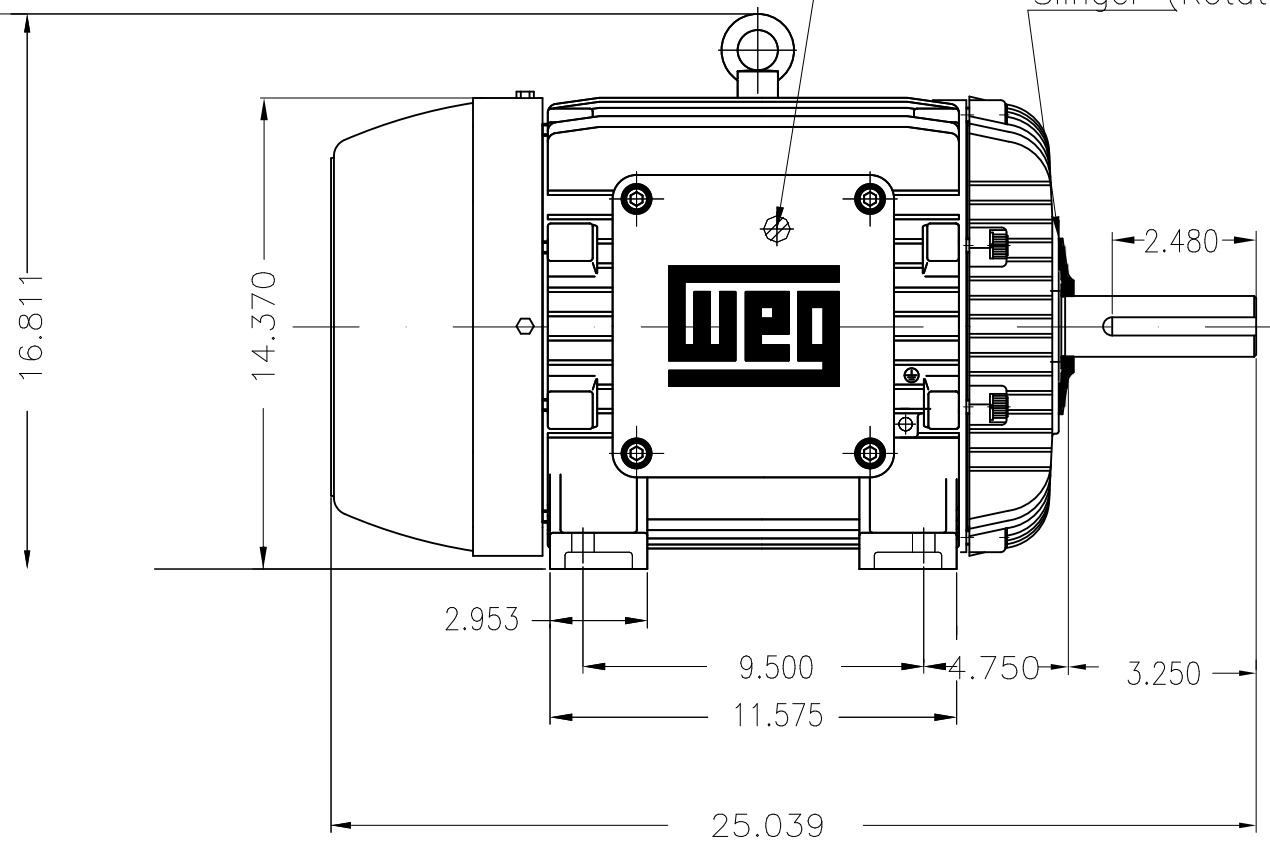
Moment of inertia (J) : 2.58 sq.ft.lb
 Duty cycle : Cont.(S1)
 Insulation class : F
 Service factor : 1.15
 Temperature rise : 80 K
 Design : B

Rev.	Changes Summary	Performed	Checked	Date
Performed by		Page		Revision
Checked by		7 / 7		
Date		14/04/2022		



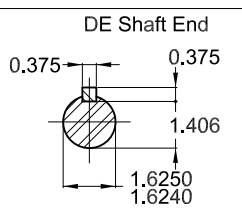
Grounding for leads 5.2–25 mm² / 10–4 AWG

Slinger (Rotating Seal)



25 HP 02 Poles 60 Hz A

Without Grease fitting
Grease - POLYUREA ESTER OIL
Color RAL 5009
Painting plan 202P
Mounting B3R(D)



ECM	LOC	SUMMARY OF MODIFICATIONS	EXECUTED	CHECKED	RELEASED	DATE	VER
EXECUTED	PIRWBUSER	THREE PH. MOTOR EXPLOSION PROOF PREM. EFF.					
CHECKED		FRAME 284TS IP55 TEFC					
RELEASED							
REL DT.	WMO	Jaragua do Sul	Product Engineering				

PREVIEW
WDD



SHEET 1 / 1

MADE IN BRAZIL

**W21X NEMA**
Premium

11360154

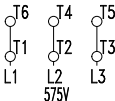
CC029A

Inverter Duty Motor
Severe Duty

LISTED

MODEL 02536XT3H284TS

PH 3	FR 284TS		
HP(kW) 25(18.5)		HZ 60	IP55
V 575		A 22.9	
RPM 3545		NEMA NOM EFF 92.4%	
PF 0.88		SFA 26.3	DES B
INS CL F Δ T 80 K		SF 1.15	ENCL TEFC
DUTY CONT.		CODE G	ALT 1000 m.a.s.l.
AMB 40°C			
AMB 55°C SF1.0			



→ 6311-2RS-C3 POLYREA ESTER OIL
→ 6211-2RS-C3 (WT/ ENS)

463 Lbs



TEMP CODE T3C
CSA/UL: Class I - Div. 1 - Groups C and D
CSA: Class II - Div. 1 - Groups F and G
CSA: Class I - Zone 1 - IIB

EXPLOSION PROOF MOTOR

FOR USE ON VPWM VFD 1000:1VT, 6:1CT, 1.0SF, T3C, AMB 40°C.