

DATA SHEET



Three Phase Induction Motor - Squirrel Cage

Customer :																																		
Product line	: NEMA Premium Efficiency Three-Phase	Product code :	11440653																															
		Catalog # :	03012ET3H326T-W22																															
Frame	: 324/6T	Locked rotor time	: 37s (cold) 21s (hot)																															
Output	: 30 HP (22 kW)	Temperature rise	: 80 K																															
Poles	: 6	Duty cycle	: Cont.(S1)																															
Frequency	: 60 Hz	Ambient temperature	: -20°C to +40°C																															
Rated voltage	: 575 V	Altitude	: 1000 m.a.s.l.																															
Rated current	: 29.0 A	Protection degree	: IP55																															
L. R. Amperes	: 180 A	Cooling method	: IC411 - TEFC																															
LRC	: 6.2x(Code G)	Mounting	: F-1																															
No load current	: 11.6 A	Rotation ¹	: Both (CW and CCW)																															
Rated speed	: 1180 rpm	Noise level ²	: 62.0 dB(A)																															
Slip	: 1.67 %	Starting method	: Direct On Line																															
Rated torque	: 134 ft.lb	Approx. weight ³	: 587 lb																															
Locked rotor torque	: 220 %																																	
Breakdown torque	: 240 %																																	
Insulation class	: F																																	
Service factor	: 1.25																																	
Moment of inertia (J)	: 13.2 sq.ft.lb																																	
Design	: B																																	
Output	25%	50%	75%	100%																														
Efficiency (%)	91.5	91.7	93.0	93.0																														
Power Factor	0.41	0.65	0.76	0.82																														
Foundation loads																																		
Max. traction : 936 lb																																		
Max. compression : 1523 lb																																		
<table border="0"> <tr> <td></td> <td></td> <td style="text-align: center;"><u>Drive end</u></td> <td></td> <td style="text-align: center;"><u>Non drive end</u></td> </tr> <tr> <td>Bearing type</td> <td>:</td> <td>6312 C3</td> <td></td> <td>6212 C3</td> </tr> <tr> <td>Sealing</td> <td>:</td> <td>V'Ring</td> <td></td> <td>V'Ring</td> </tr> <tr> <td>Lubrication interval</td> <td>:</td> <td>20000 h</td> <td></td> <td>20000 h</td> </tr> <tr> <td>Lubricant amount</td> <td>:</td> <td>21 g</td> <td></td> <td>13 g</td> </tr> <tr> <td>Lubricant type</td> <td>:</td> <td colspan="3" style="text-align: center;">Mobil Polyrex EM</td> </tr> </table>							<u>Drive end</u>		<u>Non drive end</u>	Bearing type	:	6312 C3		6212 C3	Sealing	:	V'Ring		V'Ring	Lubrication interval	:	20000 h		20000 h	Lubricant amount	:	21 g		13 g	Lubricant type	:	Mobil Polyrex EM		
		<u>Drive end</u>		<u>Non drive end</u>																														
Bearing type	:	6312 C3		6212 C3																														
Sealing	:	V'Ring		V'Ring																														
Lubrication interval	:	20000 h		20000 h																														
Lubricant amount	:	21 g		13 g																														
Lubricant type	:	Mobil Polyrex EM																																
Notes																																		
<p>This revision replaces and cancel the previous one, which must be eliminated.</p> <p>(1) Looking the motor from the shaft end.</p> <p>(2) Measured at 1m and with tolerance of +3dB(A).</p> <p>(3) Approximate weight subject to changes after manufacturing process.</p> <p>(4) At 100% of full load.</p>			<p>These are average values based on tests with sinusoidal power supply, subject to the tolerances stipulated in NEMA MG-1.</p>																															
Rev.	Changes Summary		Performed	Checked	Date																													
Performed by																																		
Checked by				Page	Revision																													
Date	14/04/2022			1 / 6																														

TORQUE AND CURRENT VS SPEED CURVE

Three Phase Induction Motor - Squirrel Cage



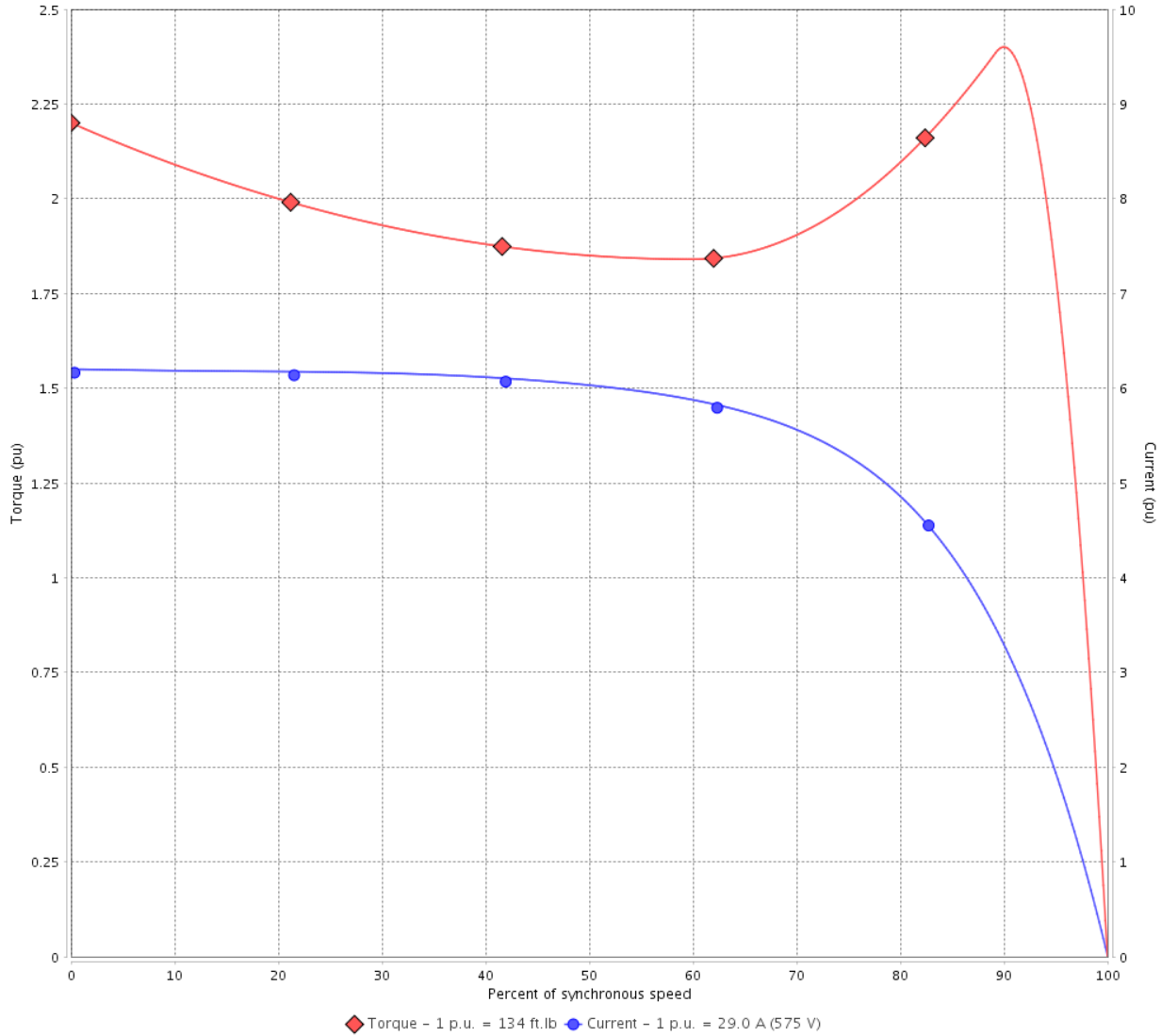
Customer :

Product line : NEMA Premium Efficiency Three-Phase

Product code : 11440653

Catalog # : 03012ET3H326T-W22

TORQUE AND CURRENT VS SPEED CURVE



Performance : 575 V 60 Hz 6P

Rated current	: 29.0 A	Moment of inertia (J)	: 13.2 sq.ft.lb
LRC	: 6.2	Duty cycle	: Cont.(S1)
Rated torque	: 134 ft.lb	Insulation class	: F
Locked rotor torque	: 220 %	Service factor	: 1.25
Breakdown torque	: 240 %	Temperature rise	: 80 K
Rated speed	: 1180 rpm	Design	: B

Locked rotor time : 37s (cold) 21s (hot)

Rev.	Changes Summary	Performed	Checked	Date
Performed by			Page 2 / 6	Revision
Checked by				
Date	14/04/2022			

LOAD PERFORMANCE CURVE

Three Phase Induction Motor - Squirrel Cage

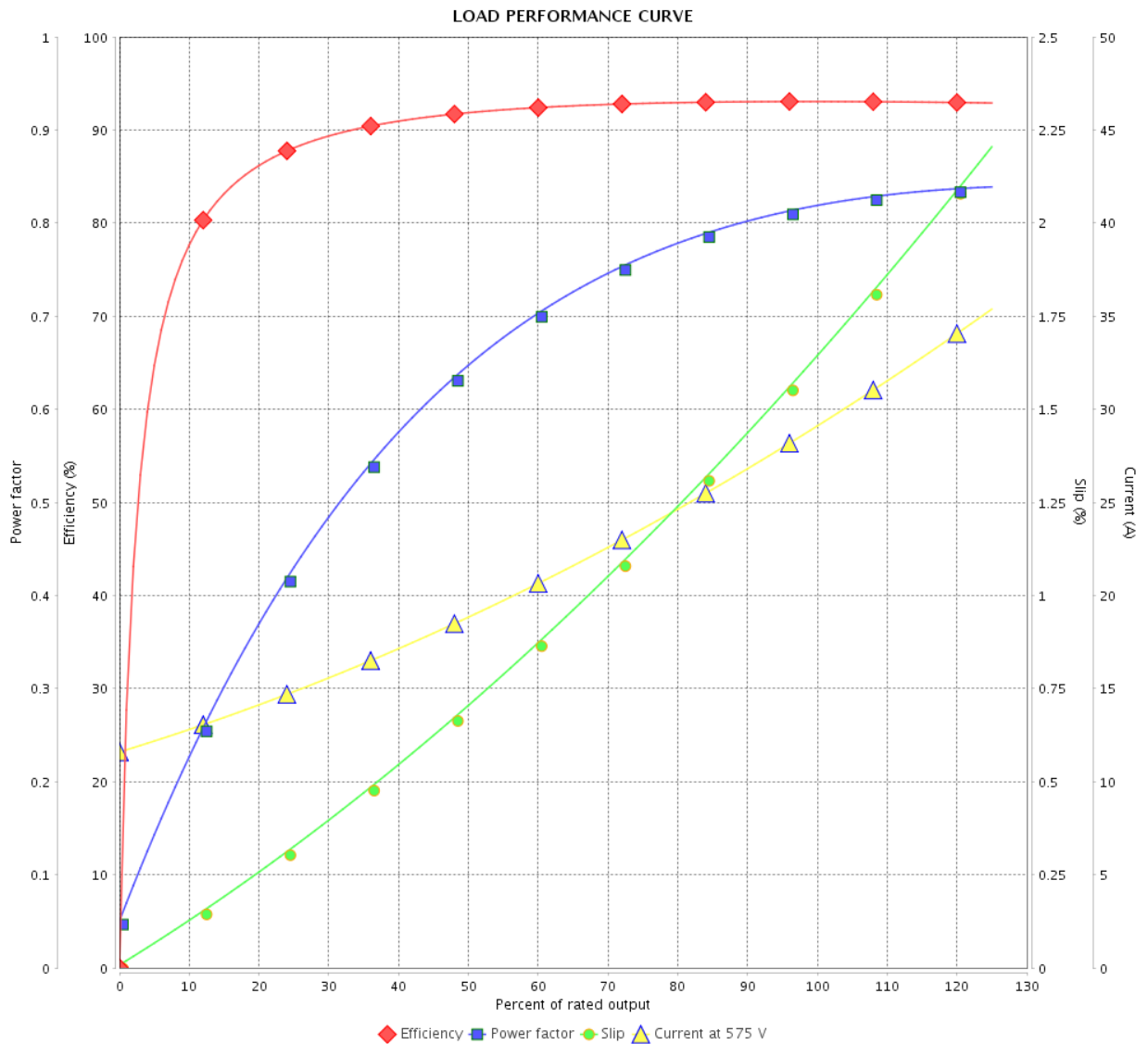


Customer :

Product line : NEMA Premium Efficiency Three-Phase

Product code : 11440653

Catalog # : 03012ET3H326T-W22



Performance : 575 V 60 Hz 6P

Rated current : 29.0 A
 LRC : 6.2
 Rated torque : 134 ft.lb
 Locked rotor torque : 220 %
 Breakdown torque : 240 %
 Rated speed : 1180 rpm

Moment of inertia (J) : 13.2 sq.ft.lb
 Duty cycle : Cont.(S1)
 Insulation class : F
 Service factor : 1.25
 Temperature rise : 80 K
 Design : B

Rev.	Changes Summary	Performed	Checked	Date
Performed by				
Checked by				
Date				
		Page	Revision	
		3 / 6		

THERMAL LIMIT CURVE



Three Phase Induction Motor - Squirrel Cage

Customer :

Product line : NEMA Premium Efficiency Three-Phase
Product code : 11440653
Catalog # : 03012ET3H326T-W22

Performance : 575 V 60 Hz 6P

Rated current	: 29.0 A	Moment of inertia (J)	: 13.2 sq.ft.lb
LRC	: 6.2	Duty cycle	: Cont.(S1)
Rated torque	: 134 ft.lb	Insulation class	: F
Locked rotor torque	: 220 %	Service factor	: 1.25
Breakdown torque	: 240 %	Temperature rise	: 80 K
Rated speed	: 1180 rpm	Design	: B

Heating constant

Cooling constant

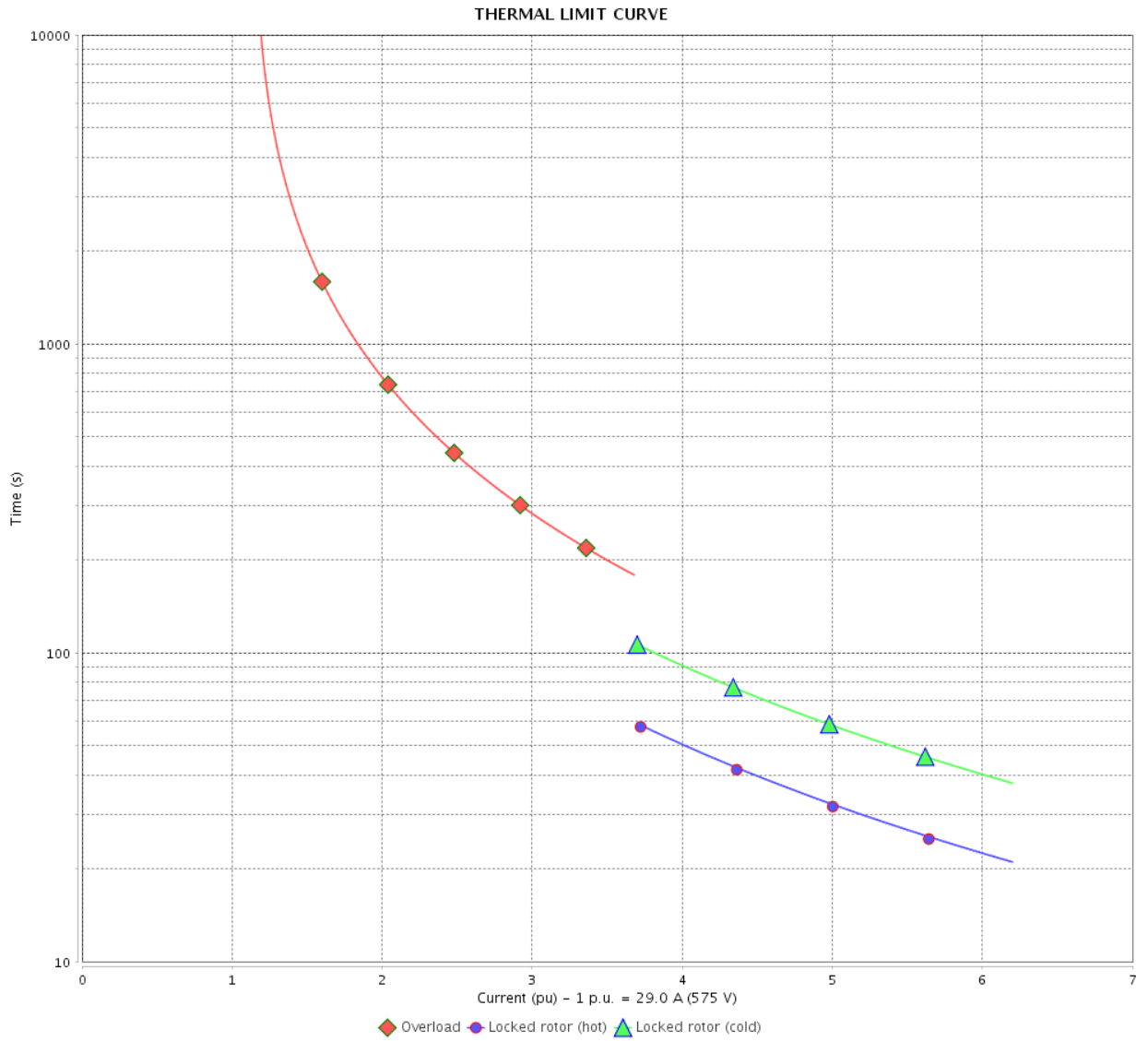
Rev.	Changes Summary	Performed	Checked	Date
Performed by				
Checked by			Page	Revision
Date	14/04/2022		4 / 6	

THERMAL LIMIT CURVE

Three Phase Induction Motor - Squirrel Cage



Customer : _____



Rev.	Changes Summary	Performed	Checked	Date
Performed by		Page 5 / 6		Revision
Checked by				
Date				

VFD OPERATION CURVE

Three Phase Induction Motor - Squirrel Cage

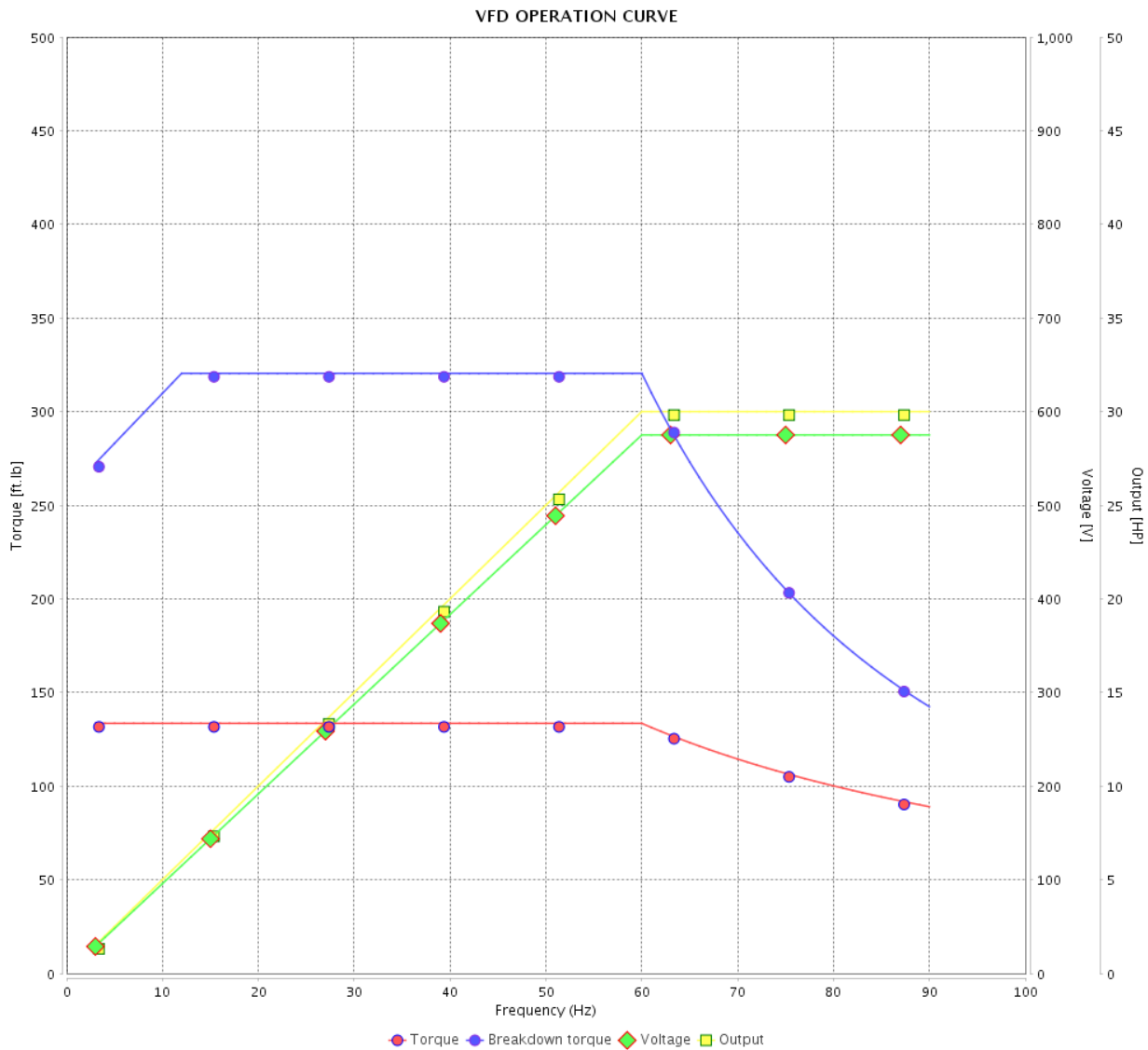


Customer :

Product line : NEMA Premium Efficiency Three-Phase

Product code : 11440653

Catalog # : 03012ET3H326T-W22



Performance : 575 V 60 Hz 6P

Rated current	: 29.0 A	Moment of inertia (J)	: 13.2 sq.ft.lb
LRC	: 6.2	Duty cycle	: Cont.(S1)
Rated torque	: 134 ft.lb	Insulation class	: F
Locked rotor torque	: 220 %	Service factor	: 1.25
Breakdown torque	: 240 %	Temperature rise	: 80 K
Rated speed	: 1180 rpm	Design	: B

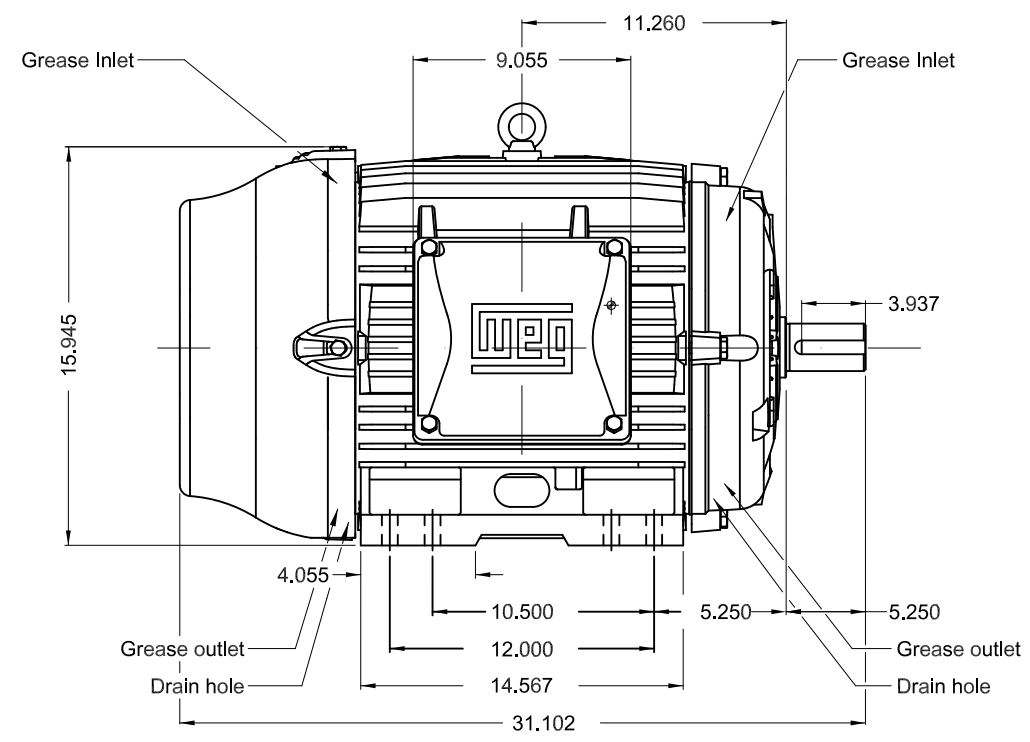
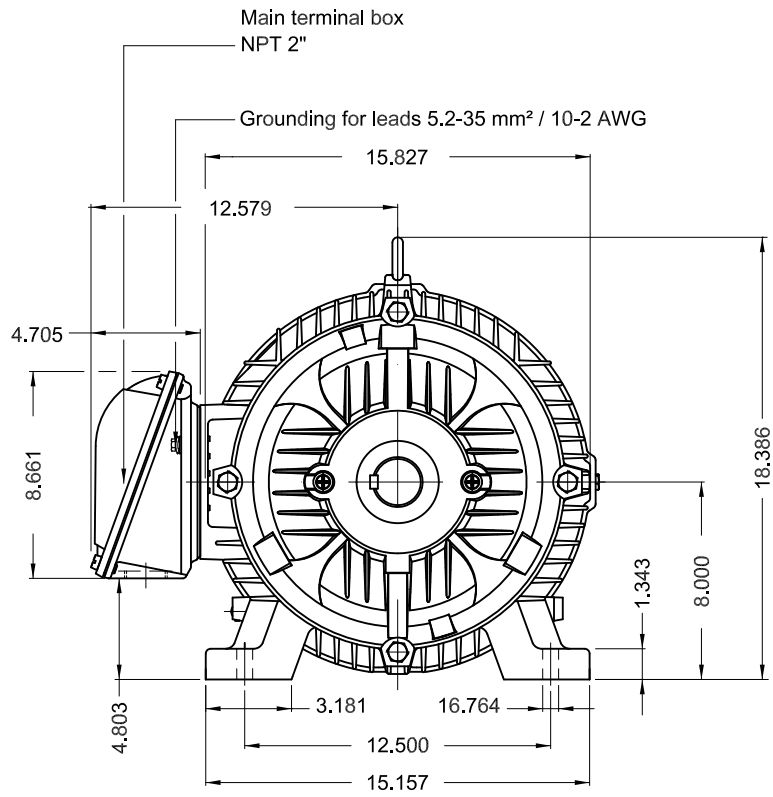
Rev.	Changes Summary	Performed	Checked	Date
Performed by			Page 6 / 6	Revision
Checked by				
Date	14/04/2022			

1 2 3 4 5 6

A

B

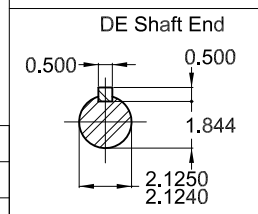
C



D

E

Color RAL 5009
 Painting plan 203A
 Mounting B3R(D)



30 HP 06 Poles 60 Hz A

ECM	LOC	SUMMARY OF MODIFICATIONS	EXECUTED	CHECKED	RELEASED	DATE	VER
EXECUTED	PIRWBUSER	THREE PH. MOTOR W22 PREM. EFF. FRAME 324/6T IP55 TEFC					
CHECKED							
RELEASED							
REL DT.	WMO	Jaragua do Sul	Product Engineering	SHEET	1 / 1		

PREVIEW
 WDD



Dimensions in inches XME A3



NEMA
Premium
W22



FOR SAFE AREA
Mod.TE1BFOXON
CC029A



Class I, Div 2, Gr A, B, C and D - T3
Class I, Zone 2, IIC - T3
Class II, Div 2, Gr F and G - T4
For use on PWM: Gr. A, B, C, D and F,
VT 1000:1, CT 20:1, 1.00SF - T3A

MODEL 03012ET3H326T-W22

Inverter Duty Motor
Severe Duty

PH3 60Hz Fr. 324/6T 1000m.a.s.l. IP55 TEFC 588lb

V 575

A 29.0

HP 30

kW 22

SF 1.25

SFA 36.3

RPM 1180

PF 0.82

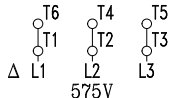
AMB 40°C

INS cl. F DT80K

NEMA NOM EFF 93.0%

DUTY CONT.

DES B Code G

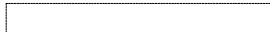


→ 6312-C3 (21g)

→ 6212-C3 (13g)



MOBIL POLYREX EM (20000h)



MADE IN MEXICO
11440653