

DATA SHEET



Three Phase Induction Motor - Squirrel Cage

Customer :		
Product line	: NEMA Premium Efficiency Three-Phase	
Product code :	12700708	
Catalog # :	03018ET3E286T-W22G	
Frame	: 284/6T	
Insulation class	: F	
Duty cycle	: Cont.(S1)	
Ambient temperature	: -20°C to +40°C	
Altitude	: 1000 m.a.s.l.	
Protection degree	: IP55	
Design	: B	
Cooling method	: IC411 - TEFC	
Mounting	: F-1	
Rotation ¹	: Both (CW and CCW)	
Starting method	: Direct On Line	
Approx. weight ²	: 445 lb	
Moment of inertia (J)		
Output [HP]	30	
Poles	4	
Frequency [Hz]	60	
Rated voltage [V]	208-230/460	
Rated current [A]	77.6-70.2/35.1	
L. R. Amperes [A]	473-428/214	
LRC [A]	6.1x(Code G)	
No load current [A]	22.4-26.0/13.0	
Rated speed [RPM]	1765	
Slip [%]	1.94	
Rated torque [ft.lb]	89.3	
Locked rotor torque [%]	240	
Breakdown torque [%]	240	
Service factor	1.25	
Temperature rise	80 K	
Locked rotor time	36s (cold) 20s (hot)	
Noise level ²	64.0 dB(A)	
Efficiency (%)	25%	0.000
	50%	93.0
	75%	93.0
	100%	93.6
Power Factor	25%	0.00
	50%	0.70
	75%	0.80
	100%	0.84
Bearing type	: <u>Drive end</u> 6311 C3 <u>Non drive end</u> 6211 C3	
Sealing	: V'Ring V'Ring	
Lubrication interval	: 20000 h 20000 h	
Lubricant amount	: 18 g 11 g	
Lubricant type	: Mobil Polyrex EM	
Foundation loads	Max. traction : 680 lb	
	Max. compression : 1126 lb	
Notes		
This revision replaces and cancel the previous one, which must be eliminated. (1) Looking the motor from the shaft end. (2) Measured at 1m and with tolerance of +3dB(A). (3) Approximate weight subject to changes after manufacturing process. (4) At 100% of full load.		
These are average values based on tests with sinusoidal power supply, subject to the tolerances stipulated in NEMA MG-1.		
Rev.	Changes Summary	
Performed by	Performed	
Checked by	Checked	
Date	14/04/2022	
Page	1 / 11	
Revision		

TORQUE AND CURRENT VS SPEED CURVE

Three Phase Induction Motor - Squirrel Cage



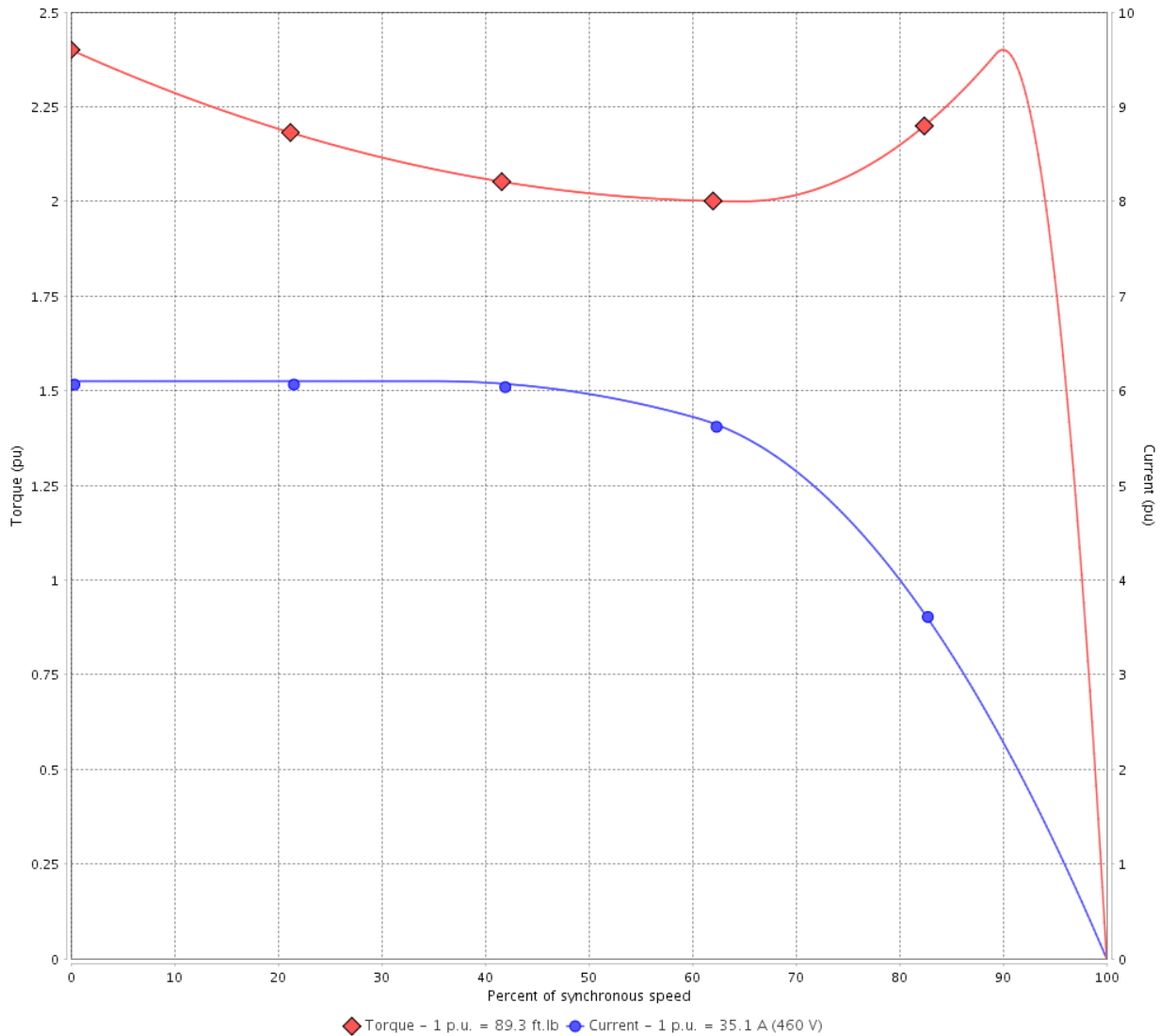
Customer :

Product line : NEMA Premium Efficiency Three-Phase

Product code : 12700708

Catalog # : 03018ET3E286T-W22G

TORQUE AND CURRENT VS SPEED CURVE



Performance : 208-230/460 V 60 Hz 4P

Rated current	: 77.6-70.2/35.1 A	Moment of inertia (J)	
LRC	: 6.1	Duty cycle	: Cont.(S1)
Rated torque	: 89.3 ft.lb	Insulation class	: F
Locked rotor torque	: 240 %	Service factor	: 1.25
Breakdown torque	: 240 %	Temperature rise	: 80 K
Rated speed	: 1765 rpm	Design	: B

Locked rotor time : 36s (cold) 20s (hot)

Rev.	Changes Summary	Performed	Checked	Date
Performed by			Page 2 / 11	Revision
Checked by				
Date	14/04/2022			

TORQUE AND CURRENT VS SPEED CURVE



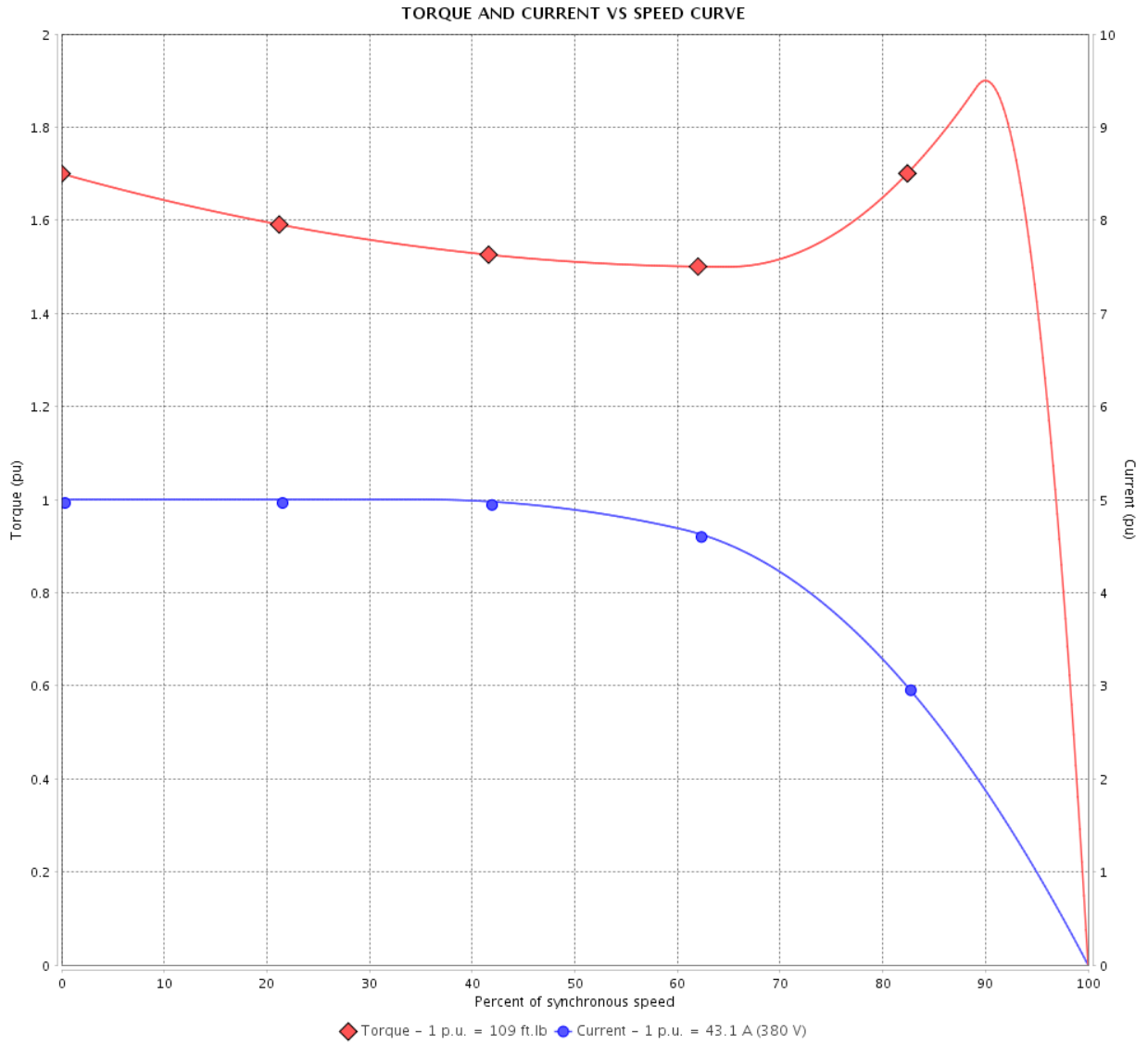
Three Phase Induction Motor - Squirrel Cage

Customer :

Product line : NEMA Premium Efficiency Three-Phase

Product code : 12700708

Catalog # : 03018ET3E286T-W22G



Performance : 380 V 50 Hz 4P

Rated current : 43.1 A
 LRC : 5.0
 Rated torque : 109 ft.lb
 Locked rotor torque : 170 %
 Breakdown torque : 190 %
 Rated speed : 1445 rpm

Moment of inertia (J)
 Duty cycle : Cont.(S1)
 Insulation class : F
 Service factor : 1.00
 Temperature rise : 80 K
 Design : B

Locked rotor time : 27s (cold) 15s (hot)

Rev.	Changes Summary	Performed	Checked	Date
Performed by			Page	Revision
Checked by			3 / 11	
Date	14/04/2022			

LOAD PERFORMANCE CURVE

Three Phase Induction Motor - Squirrel Cage



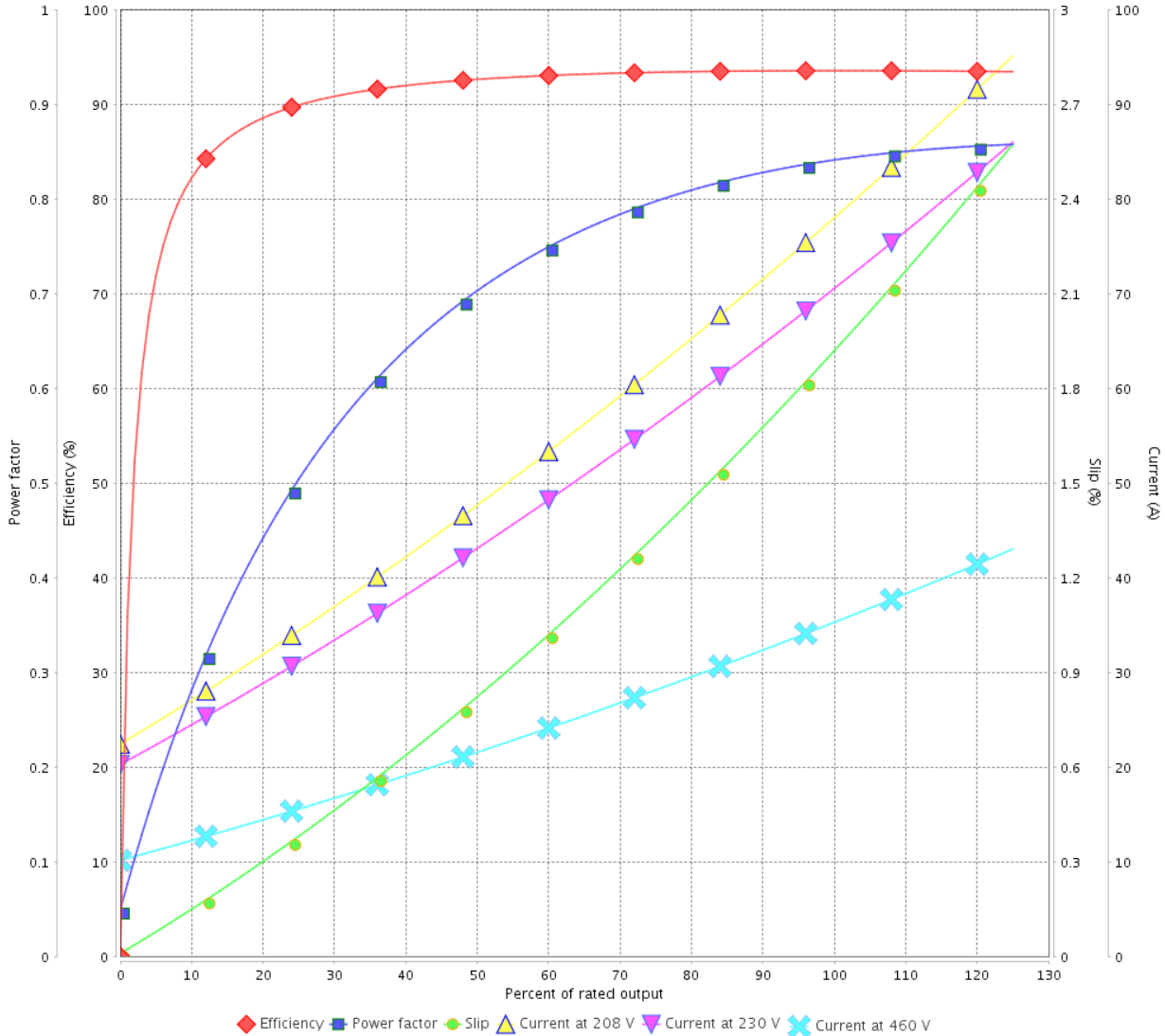
Customer :

Product line : NEMA Premium Efficiency Three-Phase

Product code : 12700708

Catalog # : 03018ET3E286T-W22G

LOAD PERFORMANCE CURVE



Performance : 208-230/460 V 60 Hz 4P

Rated current : 77.6-70.2/35.1 A
 LRC : 6.1
 Rated torque : 89.3 ft.lb
 Locked rotor torque : 240 %
 Breakdown torque : 240 %
 Rated speed : 1765 rpm

Moment of inertia (J)
 Duty cycle : Cont.(S1)
 Insulation class : F
 Service factor : 1.25
 Temperature rise : 80 K
 Design : B

Rev.	Changes Summary	Performed	Checked	Date
Performed by			Page	Revision
Checked by			4 / 11	
Date	14/04/2022			

LOAD PERFORMANCE CURVE

Three Phase Induction Motor - Squirrel Cage

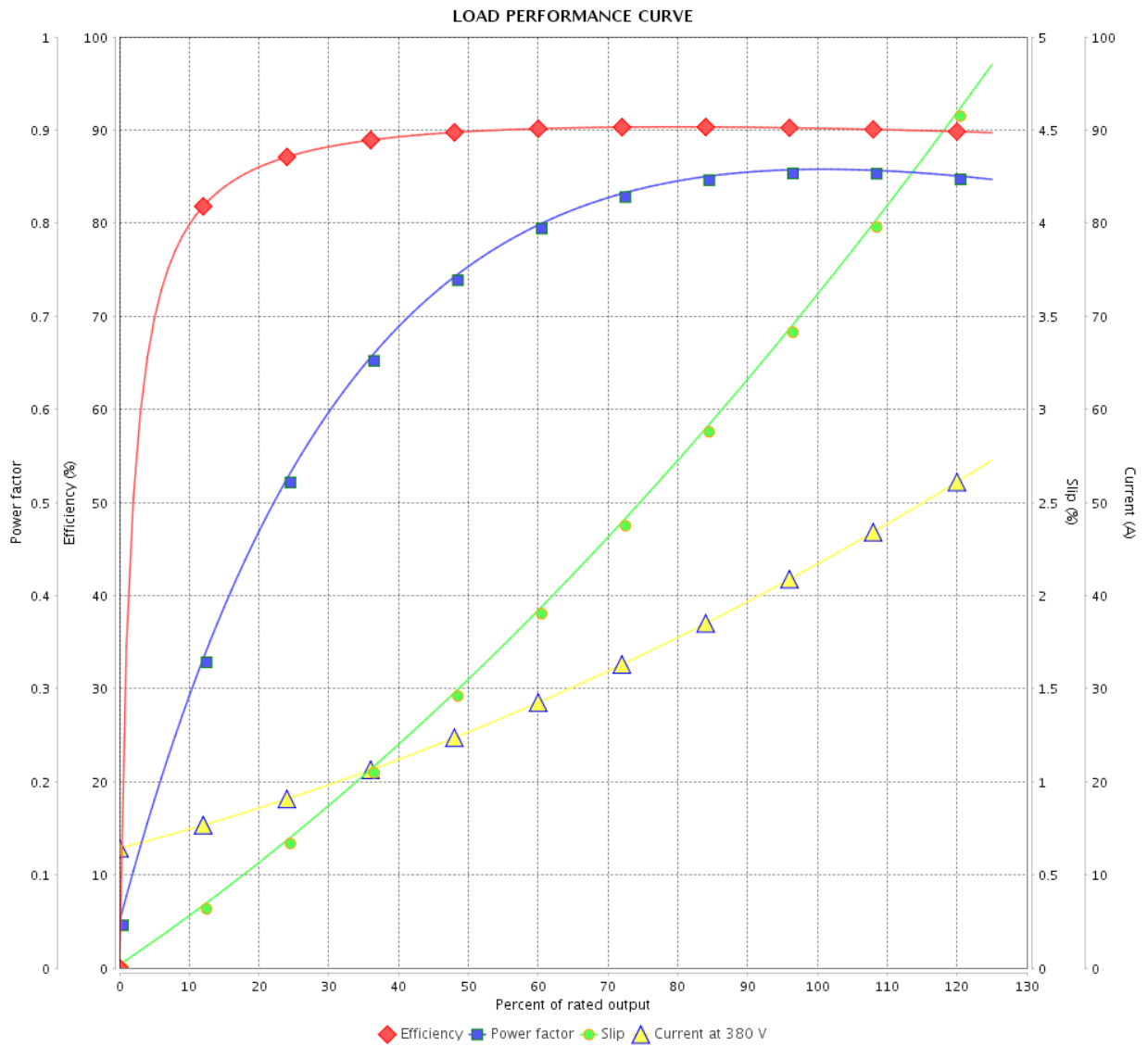


Customer :

Product line : NEMA Premium Efficiency Three-Phase

Product code : 12700708

Catalog # : 03018ET3E286T-W22G



Performance : 380 V 50 Hz 4P

Rated current : 43.1 A
 LRC : 5.0
 Rated torque : 109 ft.lb
 Locked rotor torque : 170 %
 Breakdown torque : 190 %
 Rated speed : 1445 rpm

Moment of inertia (J)
 Duty cycle : Cont.(S1)
 Insulation class : F
 Service factor : 1.00
 Temperature rise : 80 K
 Design : B

Rev.	Changes Summary	Performed	Checked	Date
Performed by		Page		Revision
Checked by		5 / 11		
Date		14/04/2022		

THERMAL LIMIT CURVE

Three Phase Induction Motor - Squirrel Cage



Customer :

Product line : NEMA Premium Efficiency Three-Phase
Product code : 12700708
Catalog # : 03018ET3E286T-W22G

Performance : 208-230/460 V 60 Hz 4P

Rated current	: 77.6-70.2/35.1 A	Moment of inertia (J)	
LRC	: 6.1	Duty cycle	: Cont.(S1)
Rated torque	: 89.3 ft.lb	Insulation class	: F
Locked rotor torque	: 240 %	Service factor	: 1.25
Breakdown torque	: 240 %	Temperature rise	: 80 K
Rated speed	: 1765 rpm	Design	: B

Heating constant

Cooling constant

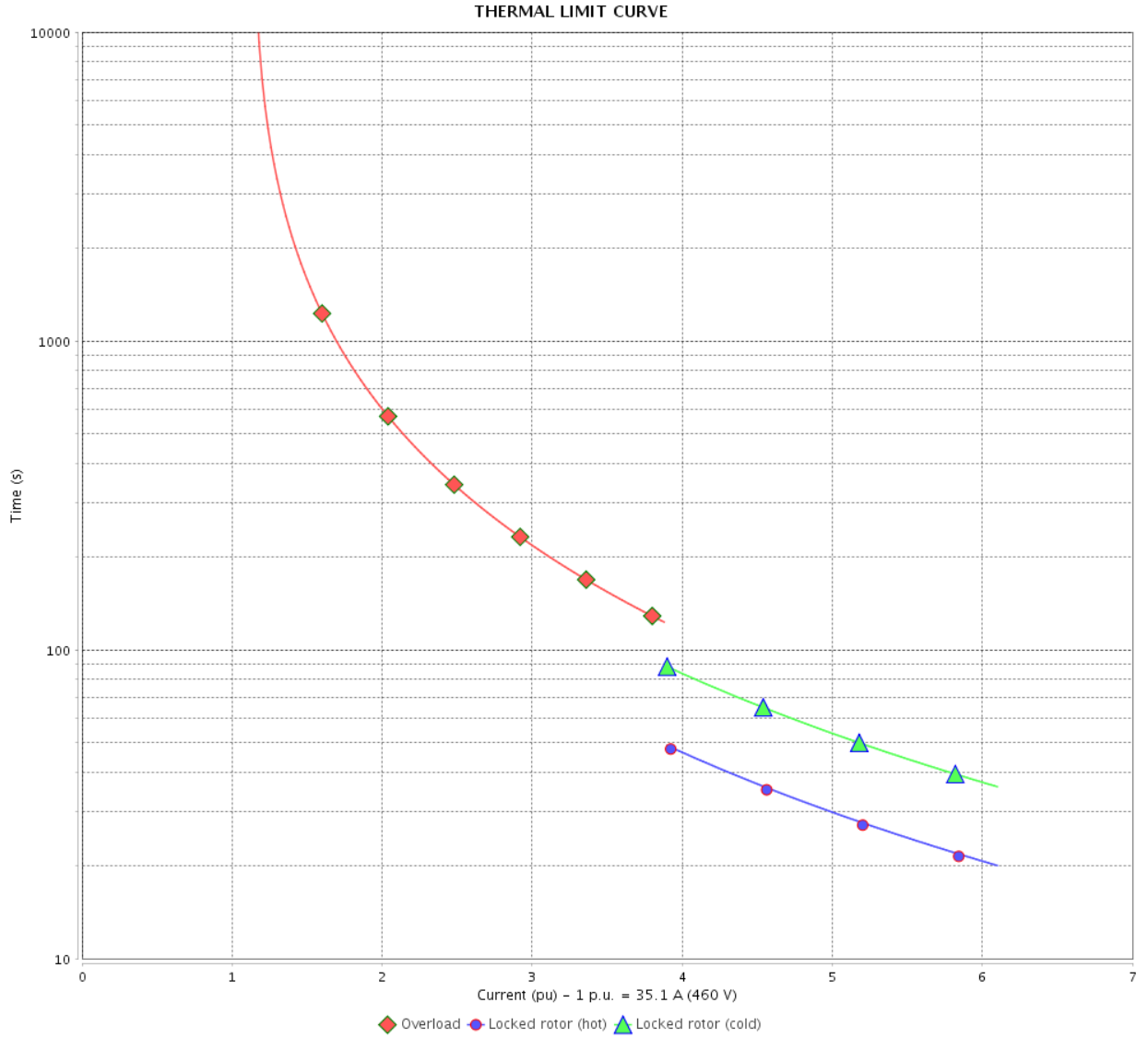
Rev.	Changes Summary	Performed	Checked	Date
Performed by				
Checked by			Page	Revision
Date	14/04/2022		6 / 11	

THERMAL LIMIT CURVE

Three Phase Induction Motor - Squirrel Cage



Customer : _____



Rev.	Changes Summary	Performed	Checked	Date
Performed by		Page 7 / 11		Revision
Checked by				
Date				

THERMAL LIMIT CURVE

Three Phase Induction Motor - Squirrel Cage



Customer :

Product line : NEMA Premium Efficiency Three-Phase

Product code : 12700708

Catalog # : 03018ET3E286T-W22G

Performance : 380 V 50 Hz 4P

Rated current : 43.1 A
LRC : 5.0
Rated torque : 109 ft.lb
Locked rotor torque : 170 %
Breakdown torque : 190 %
Rated speed : 1445 rpm

Moment of inertia (J)
Duty cycle : Cont.(S1)
Insulation class : F
Service factor : 1.00
Temperature rise : 80 K
Design : B

Heating constant

Cooling constant

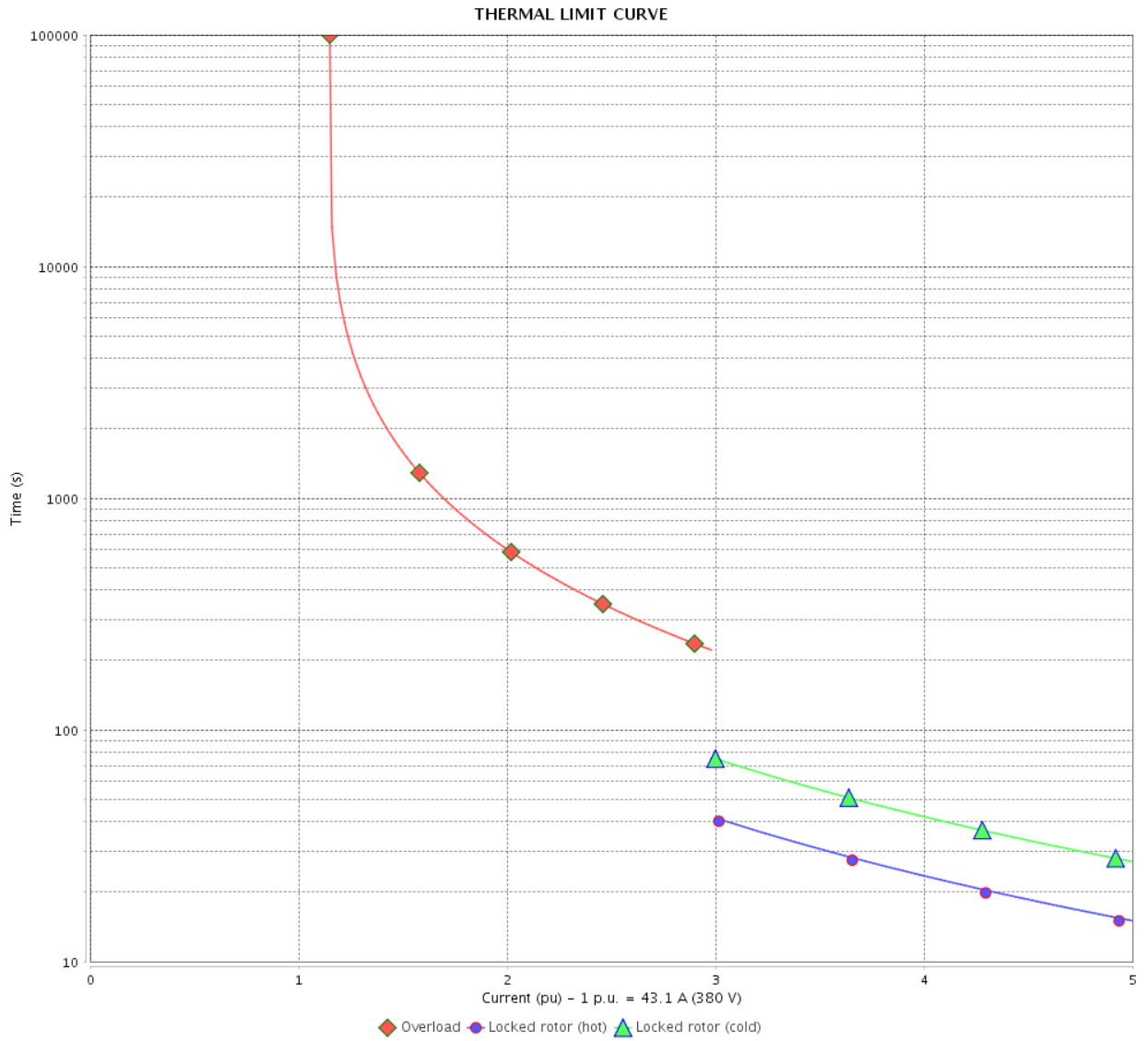
Rev.	Changes Summary	Performed	Checked	Date
Performed by				
Checked by			Page	Revision
Date	14/04/2022		8 / 11	

THERMAL LIMIT CURVE

Three Phase Induction Motor - Squirrel Cage



Customer : _____



Rev.	Changes Summary	Performed	Checked	Date
Performed by				
Checked by				
Date				
		Page	Revision	
		9 / 11		

VFD OPERATION CURVE

Three Phase Induction Motor - Squirrel Cage



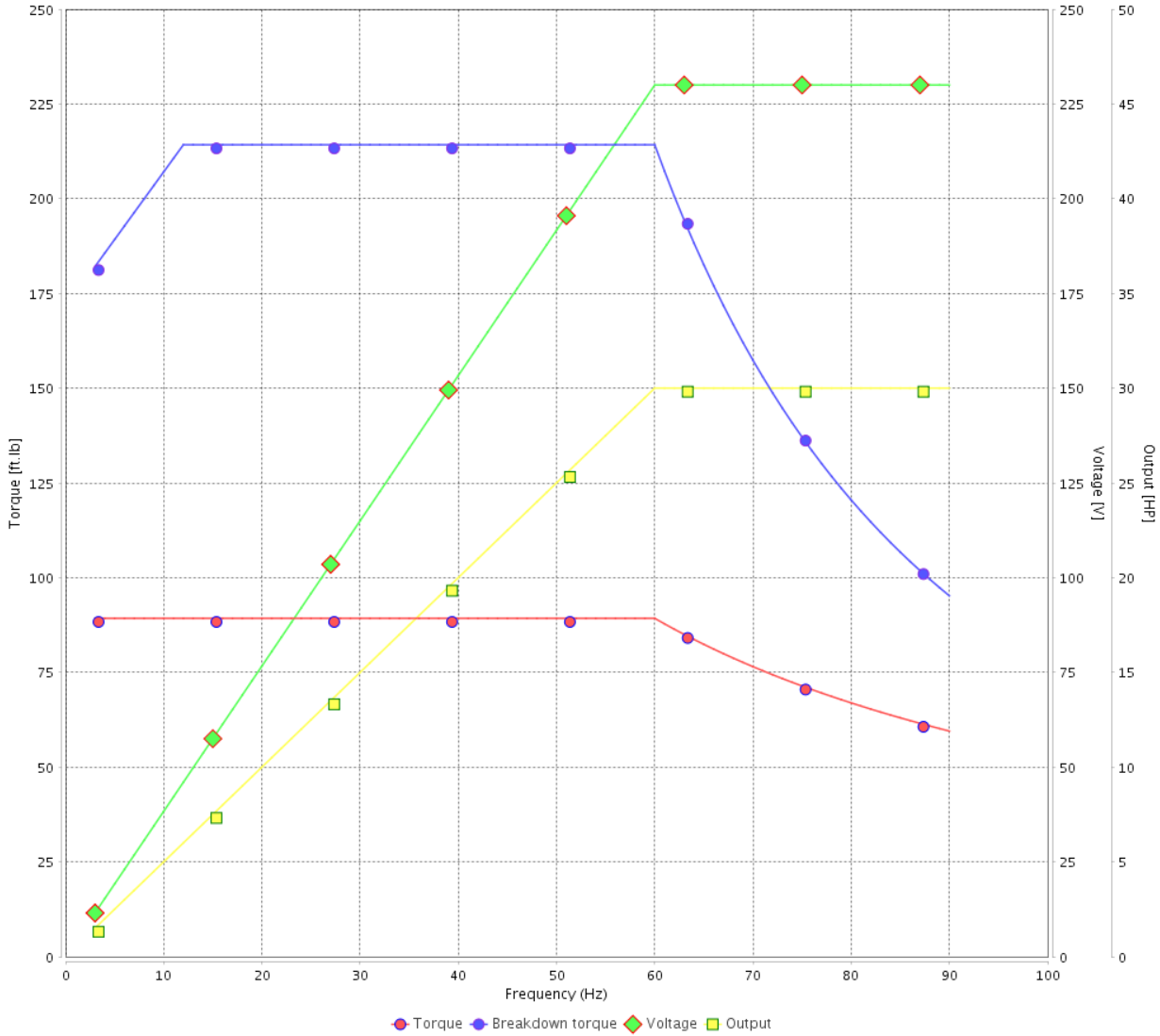
Customer :

Product line : NEMA Premium Efficiency Three-Phase

Product code : 12700708

Catalog # : 03018ET3E286T-W22G

VFD OPERATION CURVE



Performance : 208-230/460 V 60 Hz 4P

Rated current : 77.6-70.2/35.1 A
 LRC : 6.1
 Rated torque : 89.3 ft.lb
 Locked rotor torque : 240 %
 Breakdown torque : 240 %
 Rated speed : 1765 rpm

Moment of inertia (J)
 Duty cycle : Cont.(S1)
 Insulation class : F
 Service factor : 1.25
 Temperature rise : 80 K
 Design : B

Rev.	Changes Summary	Performed	Checked	Date
Performed by			Page 10 / 11	Revision
Checked by				
Date	14/04/2022			

VFD OPERATION CURVE

Three Phase Induction Motor - Squirrel Cage

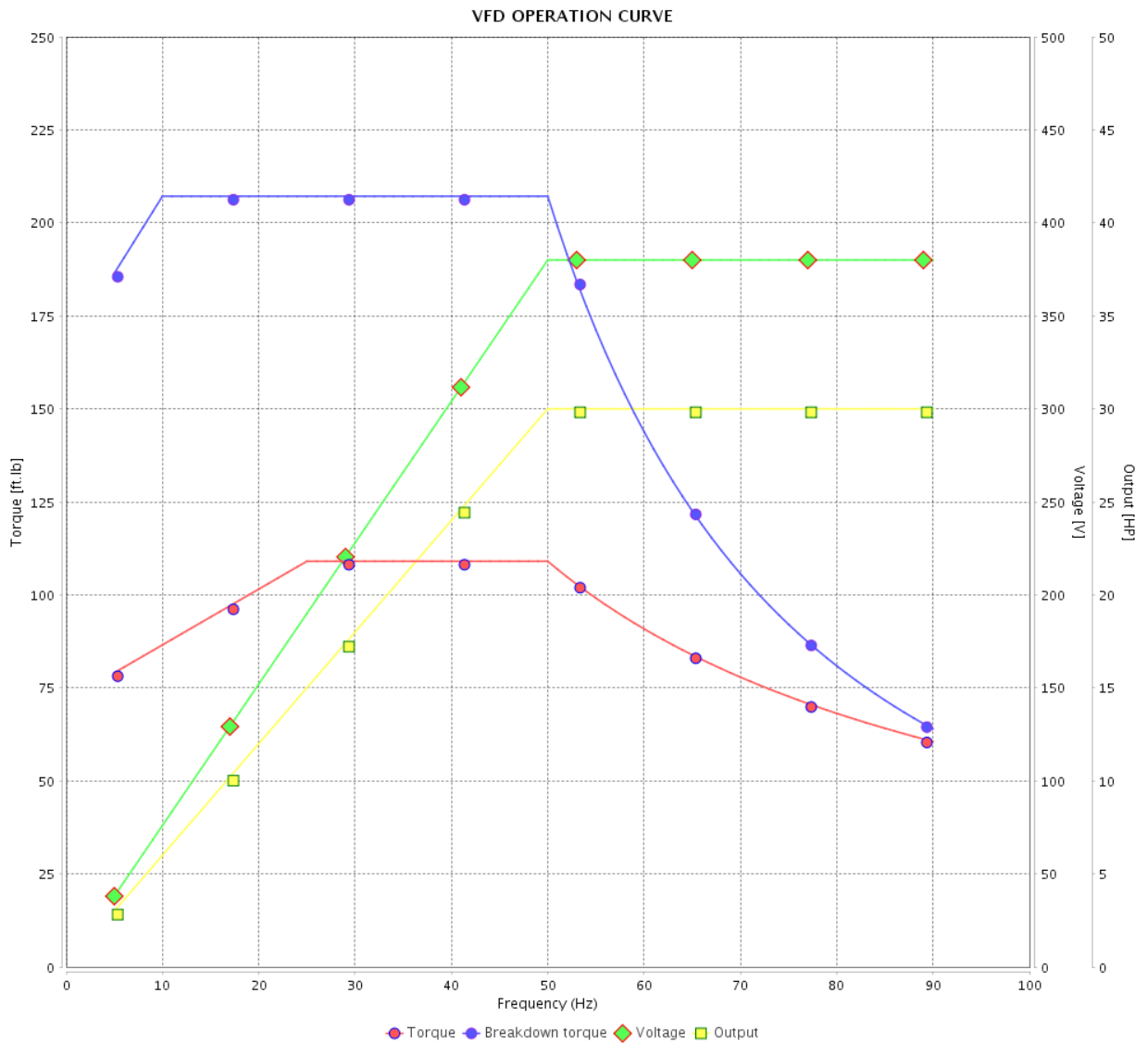


Customer :

Product line : NEMA Premium Efficiency Three-Phase

Product code : 12700708

Catalog # : 03018ET3E286T-W22G



Performance : 380 V 50 Hz 4P

Rated current : 43.1 A
 LRC : 5.0
 Rated torque : 109 ft.lb
 Locked rotor torque : 170 %
 Breakdown torque : 190 %
 Rated speed : 1445 rpm

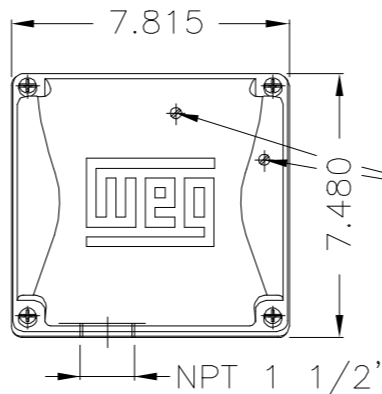
Moment of inertia (J)
 Duty cycle : Cont.(S1)
 Insulation class : F
 Service factor : 1.00
 Temperature rise : 80 K
 Design : B

Rev.	Changes Summary	Performed	Checked	Date
Performed by			Page	Revision
Checked by			11 / 11	
Date	14/04/2022			

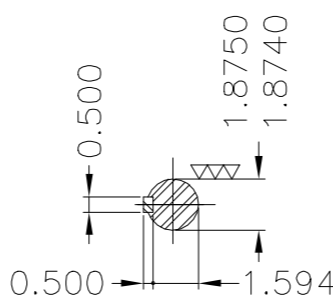
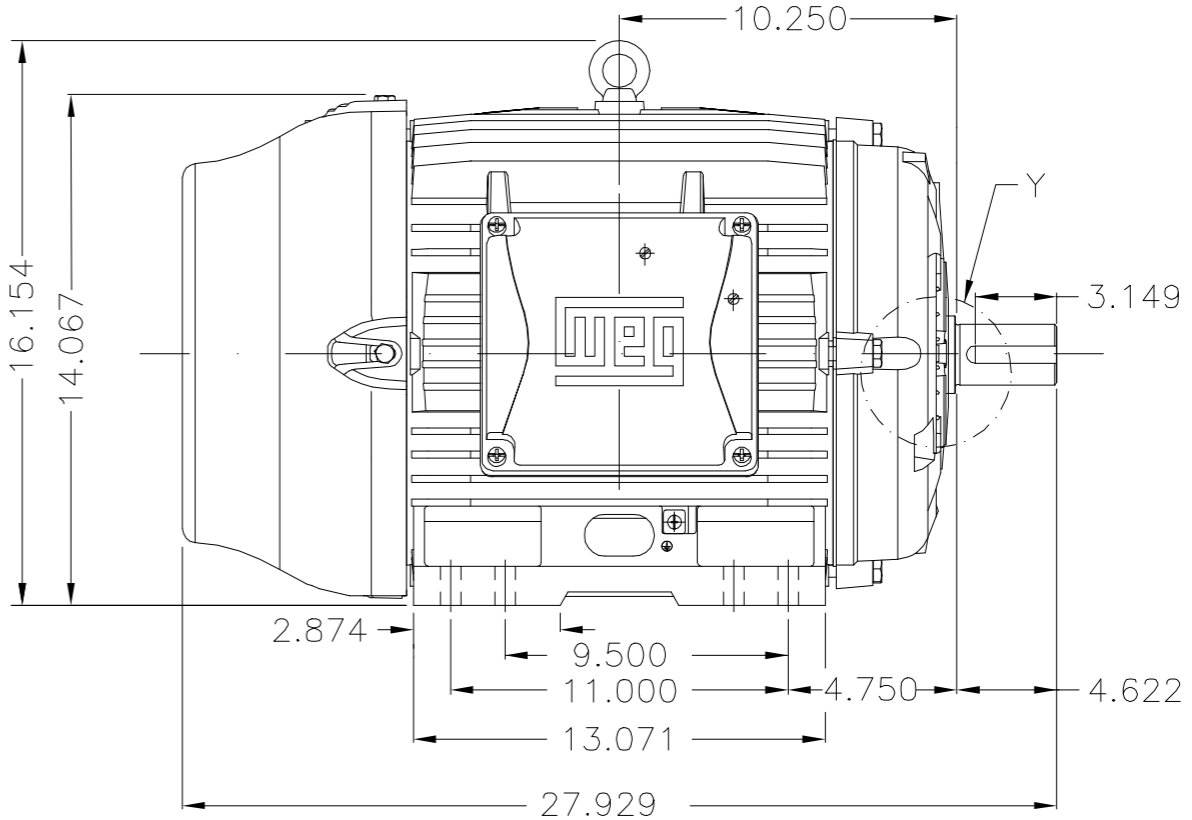
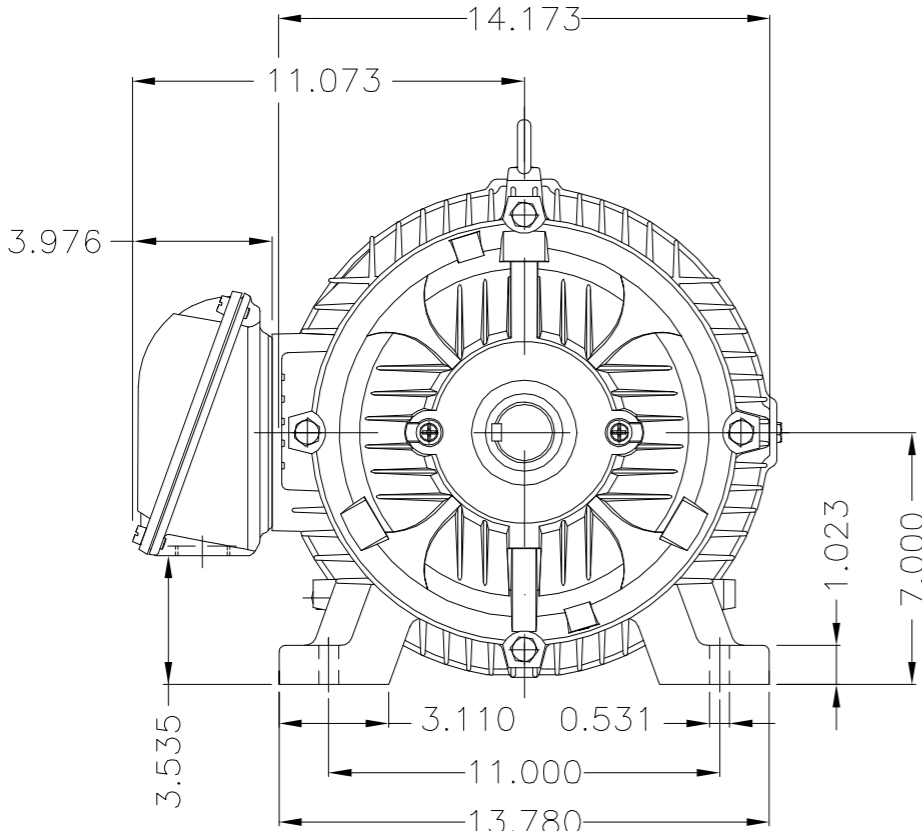
EIXO/SHAFT	
PADRÃO/STANDARD	X
OPCIONAL/OPTIONAL	
ESPECIAL/SPECIAL	

Dimensões em polegadas
Dimensions in inches

THIS IS AN UPDATED REVISION, THE PREVIOUS ONE MUST BE DISREGARDED.

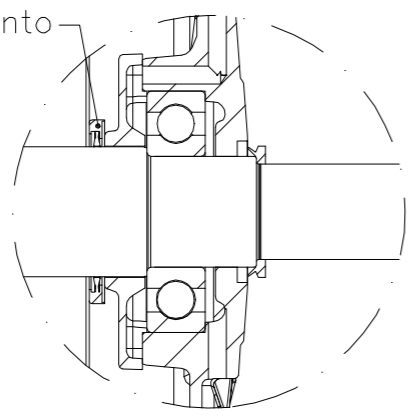


Main terminal box



DE Shaft End

Anel de aterramento



Detail Y

Kit porta escova de aterramento AEGIS interno na tampa dianteira /
Brush holder Kit AEGIS internal D.E.
Plano de pintura 203A / Painting plan 203A
Forma construtiva NEMA F-1 / Mounting NEMA F-1
Forma construtiva B3D / Mounting B3R(D)

WEG ELECTRIC CORP.

500000940979	ALTERADO PARA NORMAL	JOSEMEDEIROS	WILLIANR	19.09.2014	02		
500000861825	CARIMBO LOTE PILOTO	PATRICKL	WILLIANR	27.02.2014	01		
ECM	LOC	SUMMARY OF MODIFICATIONS	EXECUTED	CHECKED	RELEASED	DATE	VER
EXECUTED	PATRICKL	THREE PHASE W22 MOTOR - NEMA PREMIUM EFF					
CHECKED		FRAME 284/6T IP55					
RELEASED	ALCHINI						
REL DT	10.02.2014	WMO	JARAGUA DO SUL	ENGENHARIA DE PRODUTO			

OV: 20339917

30 HP 04 Poles 60Hz

A

10002700045
000 02



UNCONTROLLED COPY RELEASED ZME A3