

# DATA SHEET



## Three Phase Induction Motor - Squirrel Cage

Customer :																			
Product line	: NEMA Premium Efficiency Three-Phase																		
Product code :	12807378																		
Catalog # :	05018ET3V326T-W22G																		
Frame : 324/6T Output : 50 HP (37 kW) Poles : 4 Frequency : 60 Hz Rated voltage : 200/400 V Rated current : 136/68.1 A L. R. Amperes : 844/422 A LRC : 6.2x(Code G) No load current : 54.0/27.0 A Rated speed : 1775 rpm Slip : 1.39 % Rated torque : 148 ft.lb Locked rotor torque : 229 % Breakdown torque : 270 % Insulation class : F Service factor : 1.25 Moment of inertia (J) : 9.16 sq.ft.lb Design : B	Locked rotor time : 27s (cold) 15s (hot) Temperature rise : 80 K Duty cycle : Cont.(S1) Ambient temperature : -20°C to +40°C Altitude : 1000 m.a.s.l. Protection degree : IP55 Cooling method : IC411 - TEFC Mounting : F-1 Rotation <sup>1</sup> : Both (CW and CCW) Noise level <sup>2</sup> : 66.0 dB(A) Starting method : Direct On Line Approx. weight <sup>3</sup> : 594 lb																		
Output	25%    50%    75%    100%																		
Efficiency (%)	92.5    93.0    94.1    94.5																		
Power Factor	0.42    0.66    0.77    0.83																		
Foundation loads																			
Max. traction	: 1236 lb																		
Max. compression	: 1830 lb																		
	<table border="0" style="width:100%;"> <tr> <td></td> <td style="text-align: center;"><u>Drive end</u></td> <td style="text-align: center;"><u>Non drive end</u></td> </tr> <tr> <td>Bearing type</td> <td>: 6312 C3</td> <td>6212 C3</td> </tr> <tr> <td>Sealing</td> <td>: V'Ring</td> <td>V'Ring</td> </tr> <tr> <td>Lubrication interval</td> <td>: 20000 h</td> <td>20000 h</td> </tr> <tr> <td>Lubricant amount</td> <td>: 21 g</td> <td>13 g</td> </tr> <tr> <td>Lubricant type</td> <td colspan="2" style="text-align: center;">Mobil Polyrex EM</td> </tr> </table>		<u>Drive end</u>	<u>Non drive end</u>	Bearing type	: 6312 C3	6212 C3	Sealing	: V'Ring	V'Ring	Lubrication interval	: 20000 h	20000 h	Lubricant amount	: 21 g	13 g	Lubricant type	Mobil Polyrex EM	
	<u>Drive end</u>	<u>Non drive end</u>																	
Bearing type	: 6312 C3	6212 C3																	
Sealing	: V'Ring	V'Ring																	
Lubrication interval	: 20000 h	20000 h																	
Lubricant amount	: 21 g	13 g																	
Lubricant type	Mobil Polyrex EM																		
Notes																			
This revision replaces and cancel the previous one, which must be eliminated. (1) Looking the motor from the shaft end. (2) Measured at 1m and with tolerance of +3dB(A). (3) Approximate weight subject to changes after manufacturing process. (4) At 100% of full load.																			
These are average values based on tests with sinusoidal power supply, subject to the tolerances stipulated in NEMA MG-1.																			
Rev.	Changes Summary	Performed	Checked	Date															
Performed by																			
Checked by			Page	Revision															
Date	13/04/2022		1 / 6																

# TORQUE AND CURRENT VS SPEED CURVE

Three Phase Induction Motor - Squirrel Cage



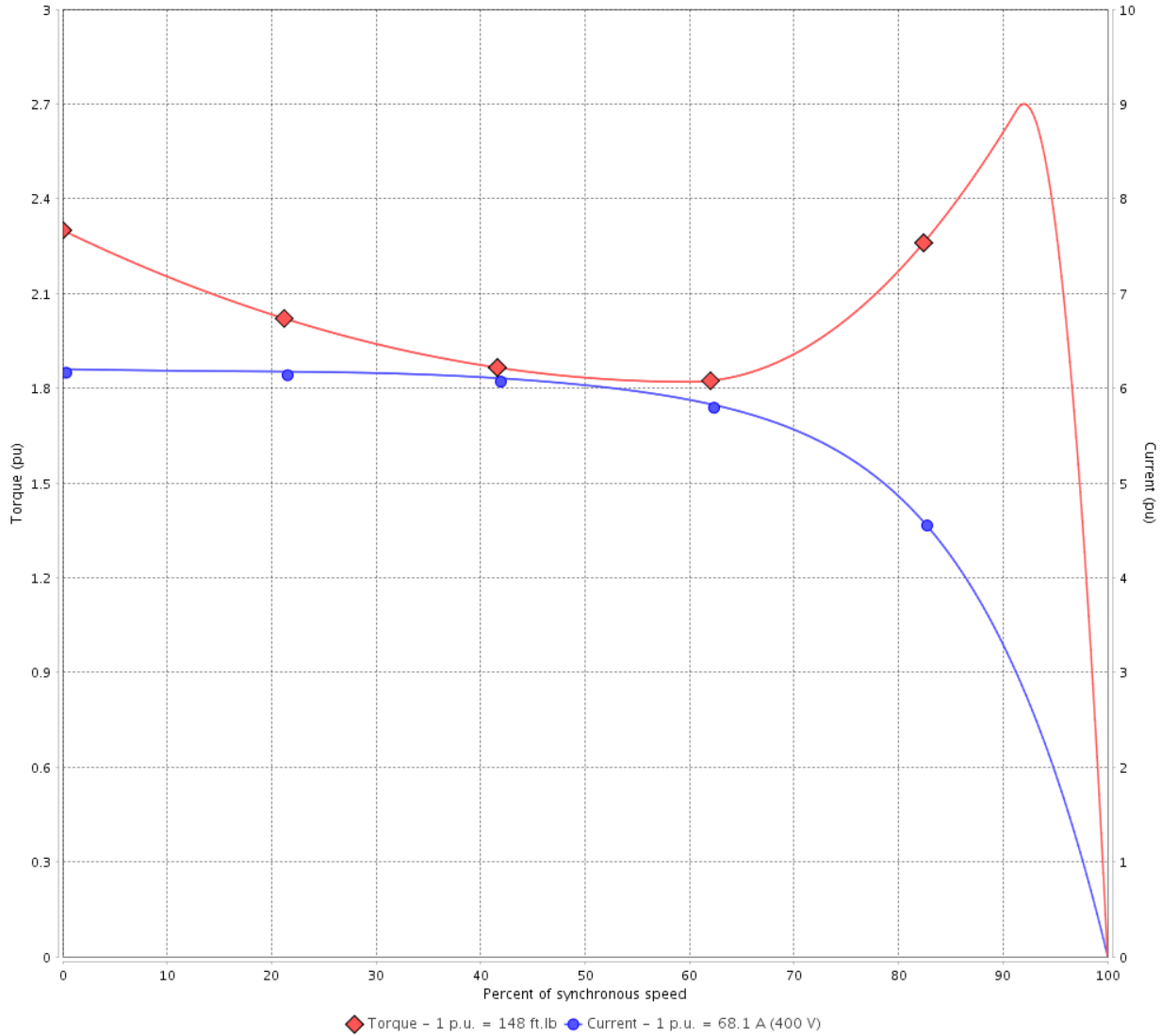
Customer :

Product line : NEMA Premium Efficiency Three-Phase

Product code : 12807378

Catalog # : 05018ET3V326T-W22G

TORQUE AND CURRENT VS SPEED CURVE



Performance : 200/400 V 60 Hz 4P

Rated current	: 136/68.1 A	Moment of inertia (J)	: 9.16 sq.ft.lb
LRC	: 6.2	Duty cycle	: Cont.(S1)
Rated torque	: 148 ft.lb	Insulation class	: F
Locked rotor torque	: 229 %	Service factor	: 1.25
Breakdown torque	: 270 %	Temperature rise	: 80 K
Rated speed	: 1775 rpm	Design	: B

Locked rotor time : 27s (cold) 15s (hot)

Rev.	Changes Summary	Performed	Checked	Date
Performed by			Page 2 / 6	Revision
Checked by				
Date	13/04/2022			

# LOAD PERFORMANCE CURVE

## Three Phase Induction Motor - Squirrel Cage

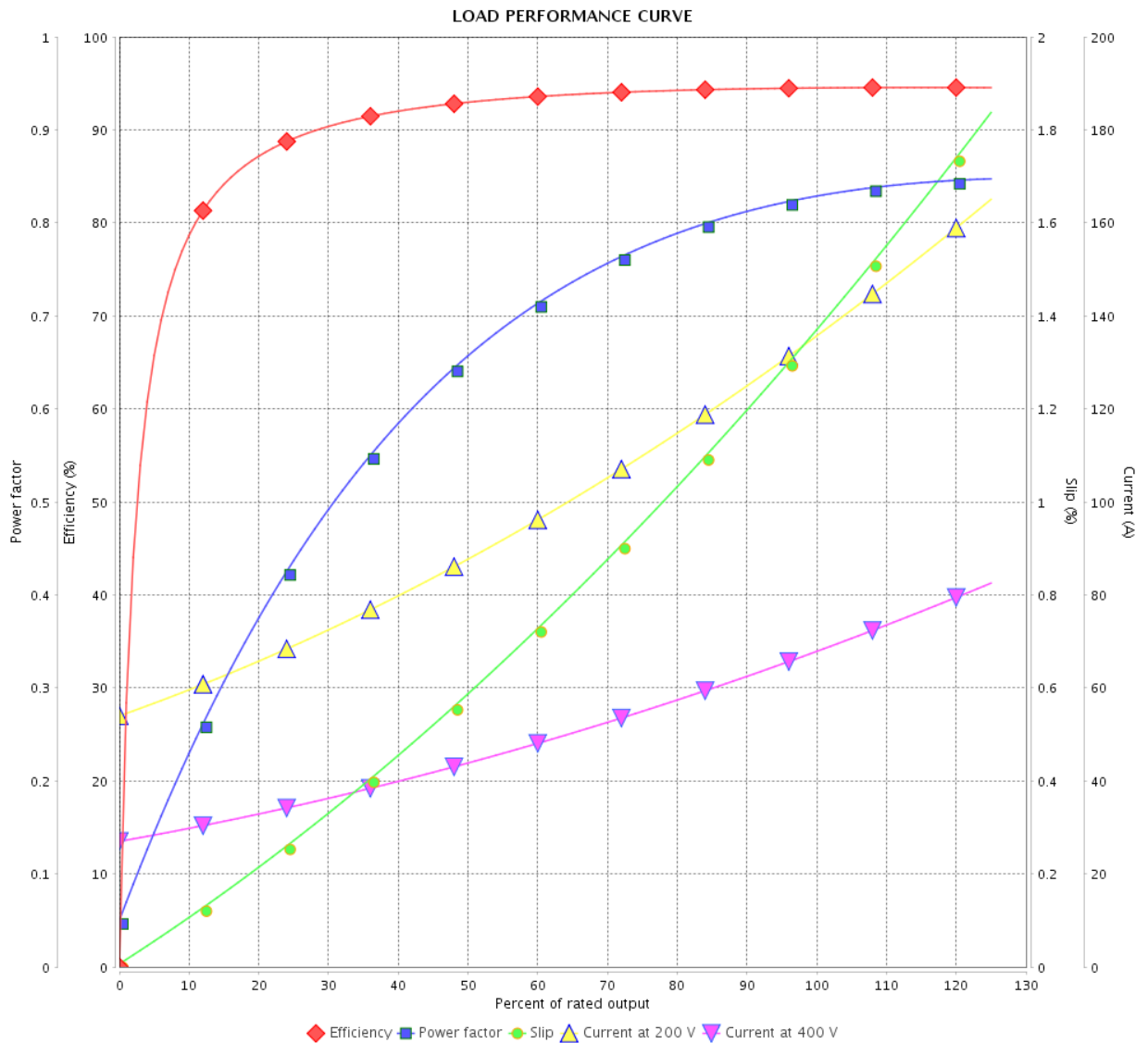


Customer :

Product line : NEMA Premium Efficiency Three-Phase

Product code : 12807378

Catalog # : 05018ET3V326T-W22G



Performance : 200/400 V 60 Hz 4P

Rated current : 136/68.1 A  
 LRC : 6.2  
 Rated torque : 148 ft.lb  
 Locked rotor torque : 229 %  
 Breakdown torque : 270 %  
 Rated speed : 1775 rpm

Moment of inertia (J) : 9.16 sq.ft.lb  
 Duty cycle : Cont.(S1)  
 Insulation class : F  
 Service factor : 1.25  
 Temperature rise : 80 K  
 Design : B

Rev.	Changes Summary	Performed	Checked	Date
Performed by			Page	Revision
Checked by			3 / 6	
Date	13/04/2022			

# THERMAL LIMIT CURVE



## Three Phase Induction Motor - Squirrel Cage

Customer :

Product line : NEMA Premium Efficiency Three-Phase  
Product code : 12807378  
Catalog # : 05018ET3V326T-W22G

Performance : 200/400 V 60 Hz 4P

Rated current	: 136/68.1 A	Moment of inertia (J)	: 9.16 sq.ft.lb
LRC	: 6.2	Duty cycle	: Cont.(S1)
Rated torque	: 148 ft.lb	Insulation class	: F
Locked rotor torque	: 229 %	Service factor	: 1.25
Breakdown torque	: 270 %	Temperature rise	: 80 K
Rated speed	: 1775 rpm	Design	: B

Heating constant

Cooling constant

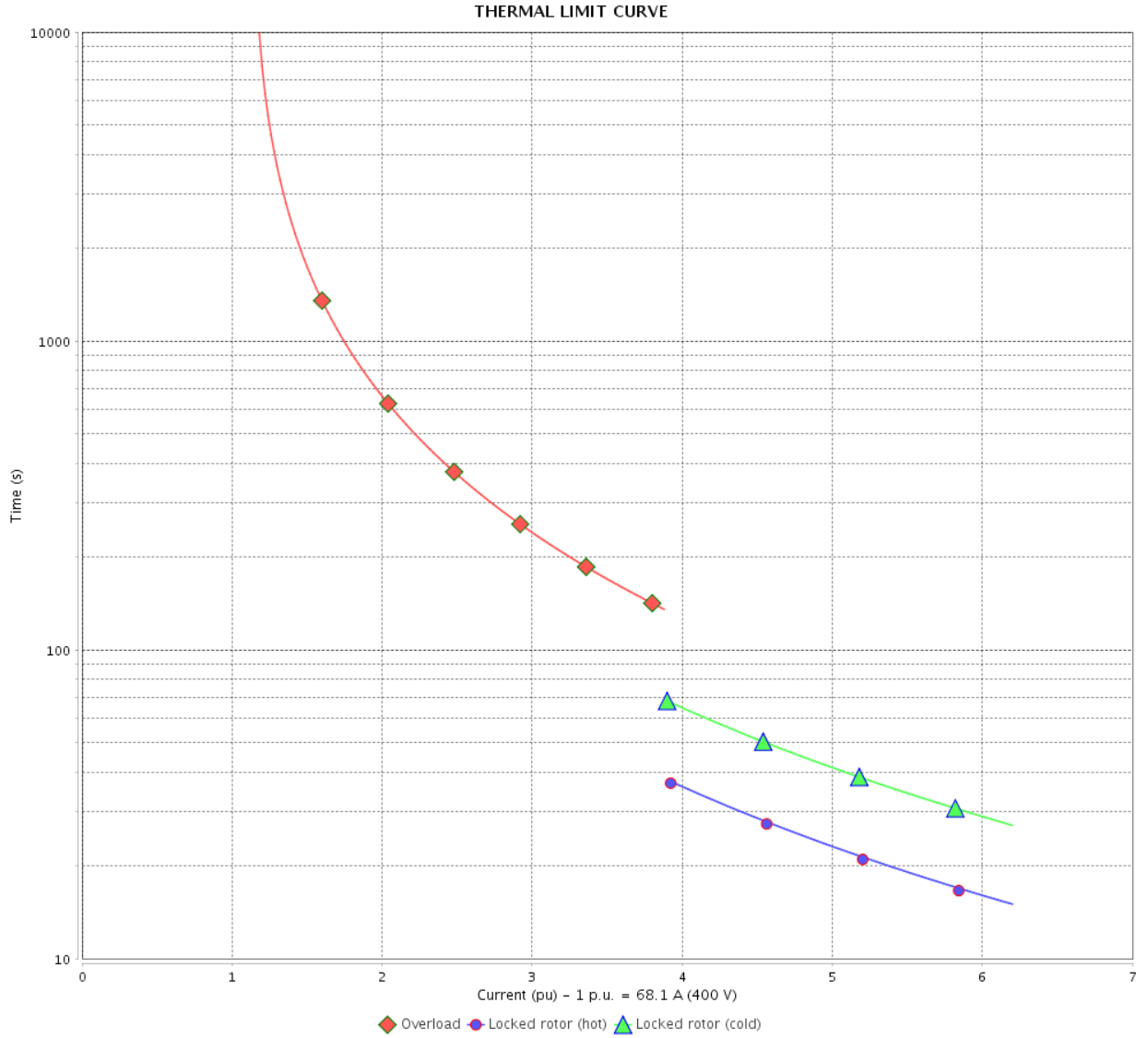
Rev.	Changes Summary	Performed	Checked	Date
Performed by				
Checked by			Page	Revision
Date	13/04/2022		4 / 6	

# THERMAL LIMIT CURVE

Three Phase Induction Motor - Squirrel Cage



Customer : \_\_\_\_\_



Rev.	Changes Summary	Performed	Checked	Date
Performed by		Page		Revision
Checked by		5 / 6		
Date		13/04/2022		

# VFD OPERATION CURVE

Three Phase Induction Motor - Squirrel Cage

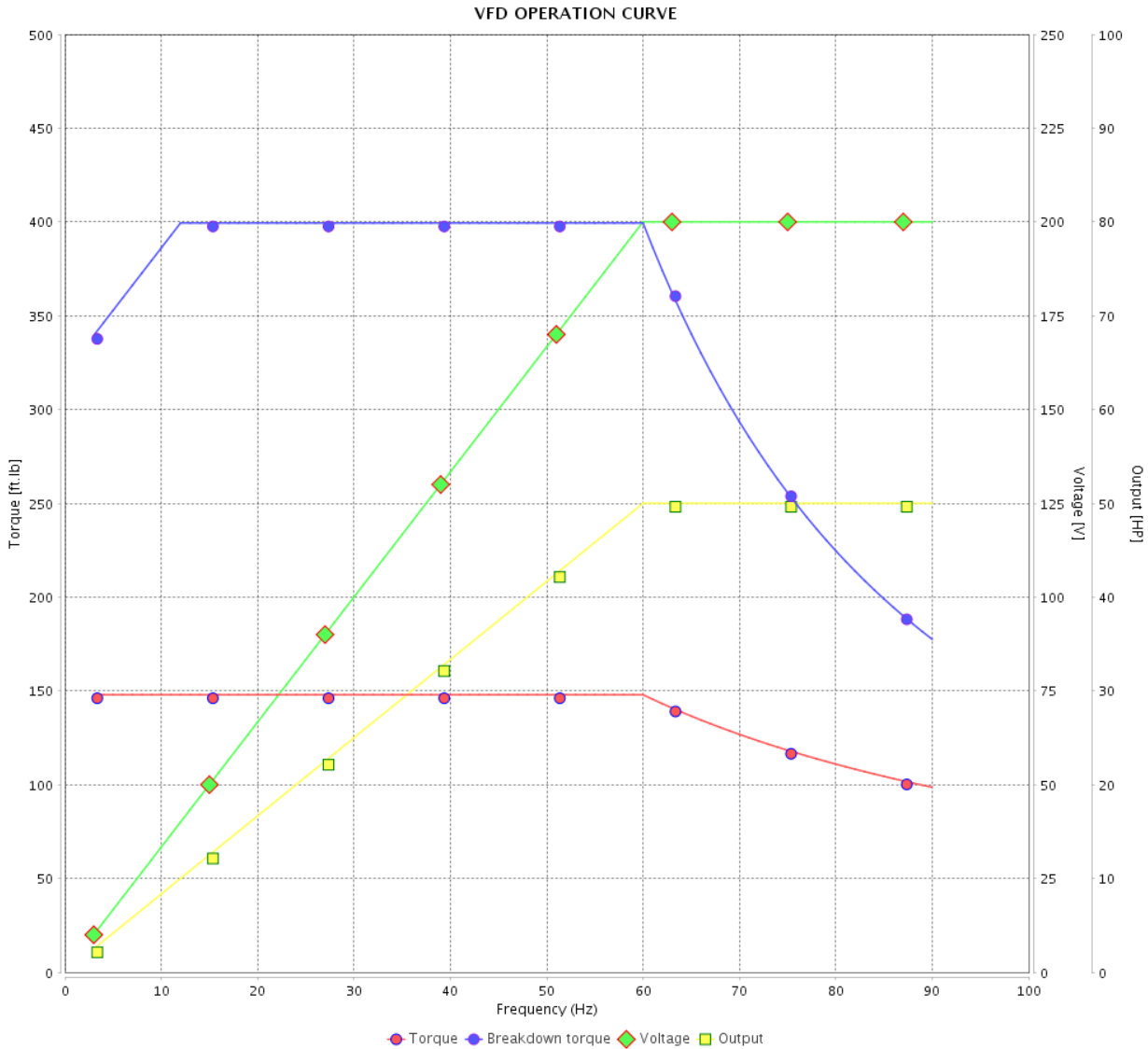


Customer :

Product line : NEMA Premium Efficiency Three-Phase

Product code : 12807378

Catalog # : 05018ET3V326T-W22G



Performance : 200/400 V 60 Hz 4P

Rated current : 136/68.1 A  
 LRC : 6.2  
 Rated torque : 148 ft.lb  
 Locked rotor torque : 229 %  
 Breakdown torque : 270 %  
 Rated speed : 1775 rpm

Moment of inertia (J) : 9.16 sq.ft.lb  
 Duty cycle : Cont.(S1)  
 Insulation class : F  
 Service factor : 1.25  
 Temperature rise : 80 K  
 Design : B

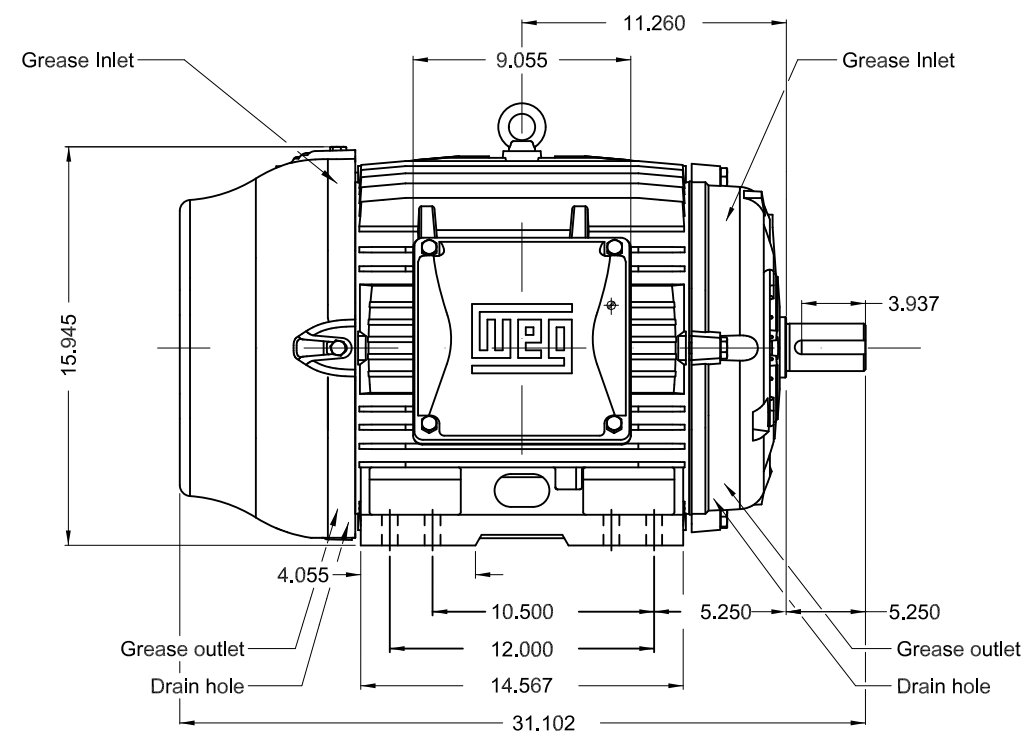
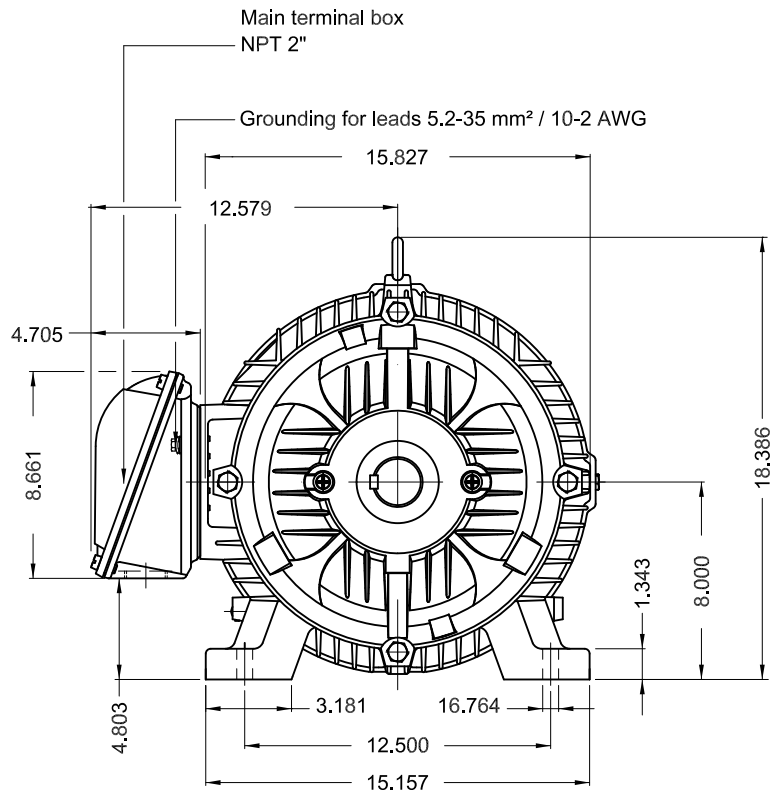
Rev.	Changes Summary	Performed	Checked	Date
Performed by			Page	Revision
Checked by				
Date				

1 2 3 4 5 6

A

B

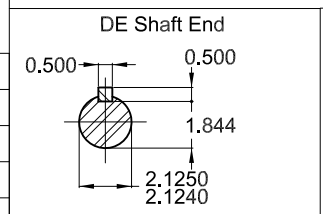
C



D

E

Internal AEGIS ground ring on the DE
Color RAL 5009
Painting plan 203A
Mounting NEMA F-1
Mounting B3R(D)



50 HP 04 Poles 60 Hz A

ECM	LOC	SUMMARY OF MODIFICATIONS	EXECUTED	CHECKED	RELEASED	DATE	VER
EXECUTED	PIRWBUSER	THREE PH. MOTOR W22 PREM. EFF.					
CHECKED		FRAME 324/6T IP55 TEFC					
RELEASED							
REL DT.	WMO	Jaragua do Sul	Product Engineering	SHEET	1 / 1		

PREVIEW  
WDD





Mod.TE1BFOXON  
CC029A

MODEL 05018ET3V326T-W22G

Inverter Duty Motor  
Severe Duty

For use on PWM: VT 1000:1, CT 20:1,  
1.00SF

MADE IN BRAZIL  
12807378

PH3 60Hz Fr. 324/6T 1000m.a.s.l. IP55 TEFC 594lb

V 200/400

A 136/68.1

HP 50

kW 37

SF 1.25

SFA 170/85.1

RPM 1775

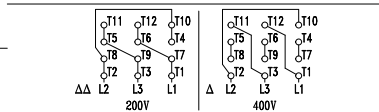
PF 0.83


AMB 40°C

INS cl. F DT80K NEMA NOM EFF 94.5%

DUTY CONT.

DES B Code G



 → 6312-C3 (21g)  
→ 6212-C3 (13g)

 MOBIL POLYREX EM (20000h)

