

DATA SHEET



Three Phase Induction Motor - Squirrel Cage

| | | | | |
|--|--|-----------|---------|----------|
| Customer : | | | | |
| Product line | : NEMA Premium Efficiency Three-Phase | | | |
| Product code : | 11360894 | | | |
| Catalog # : | 05036XT3H326TS | | | |
| Frame : 326TS Output : 50 HP (37 kW) Poles : 2 Frequency : 60 Hz Rated voltage : 575 V Rated current : 44.4 A L. R. Amperes : 320 A LRC : 7.2x(Code H) No load current : 11.8 A Rated speed : 3560 rpm Slip : 1.11 % Rated torque : 73.8 ft.lb Locked rotor torque : 260 % Breakdown torque : 260 % Insulation class : F Service factor : 1.15 Moment of inertia (J) : 5.42 sq.ft.lb Design : B | Locked rotor time : 59s (cold) 33s (hot) Temperature rise : 80 K Duty cycle : Cont.(S1) Ambient temperature : -20°C to +40°C Altitude : 1000 m.a.s.l. Protection degree : IP55 Cooling method : IC411 - TEFC Mounting : F-1 Rotation ¹ : Both (CW and CCW) Noise level ² : 81.0 dB(A) Starting method : Direct On Line Approx. weight ³ : 692 lb | | | |
| Output | 25% 50% 75% 100% | | | |
| Efficiency (%) | 91.8 92.4 93.6 94.1 | | | |
| Power Factor | 0.58 0.82 0.88 0.89 | | | |
| Foundation loads | | | | |
| Max. traction : 390 lb | | | | |
| Max. compression : 1082 lb | | | | |
| Bearing type | : <u>Drive end</u> 6312 2RS C3 <u>Non drive end</u> 6212 2RS C3 | | | |
| Sealing | : Oil Seal Lip Seal | | | |
| Lubrication interval | : - - | | | |
| Lubricant amount | : - - | | | |
| Lubricant type | : POLYREA ESTER OIL (WT/ ENS) | | | |
| Notes | | | | |
| This revision replaces and cancel the previous one, which must be eliminated. (1) Looking the motor from the shaft end. (2) Measured at 1m and with tolerance of +3dB(A). (3) Approximate weight subject to changes after manufacturing process. (4) At 100% of full load. | | | | |
| These are average values based on tests with sinusoidal power supply, subject to the tolerances stipulated in NEMA MG-1. | | | | |
| Rev. | Changes Summary | Performed | Checked | Date |
| Performed by | | | | |
| Checked by | | | Page | Revision |
| Date | 12/04/2022 | | 1 / 7 | |

DATA SHEET

Three Phase Induction Motor - Squirrel Cage



Customer : _____

Thermal protection

| ID | Application | Type | Quantity | Sensing Temperature |
|----|-------------|----------------------|-----------|---------------------|
| 1 | Winding | Thermostat - 2 wires | 1 x Phase | 155 °C |

| Rev. | Changes Summary | Performed | Checked | Date |
|--------------|-----------------|-----------|---------|----------|
| Performed by | | | | |
| Checked by | | | Page | Revision |
| Date | 12/04/2022 | | 2 / 7 | |

TORQUE AND CURRENT VS SPEED CURVE



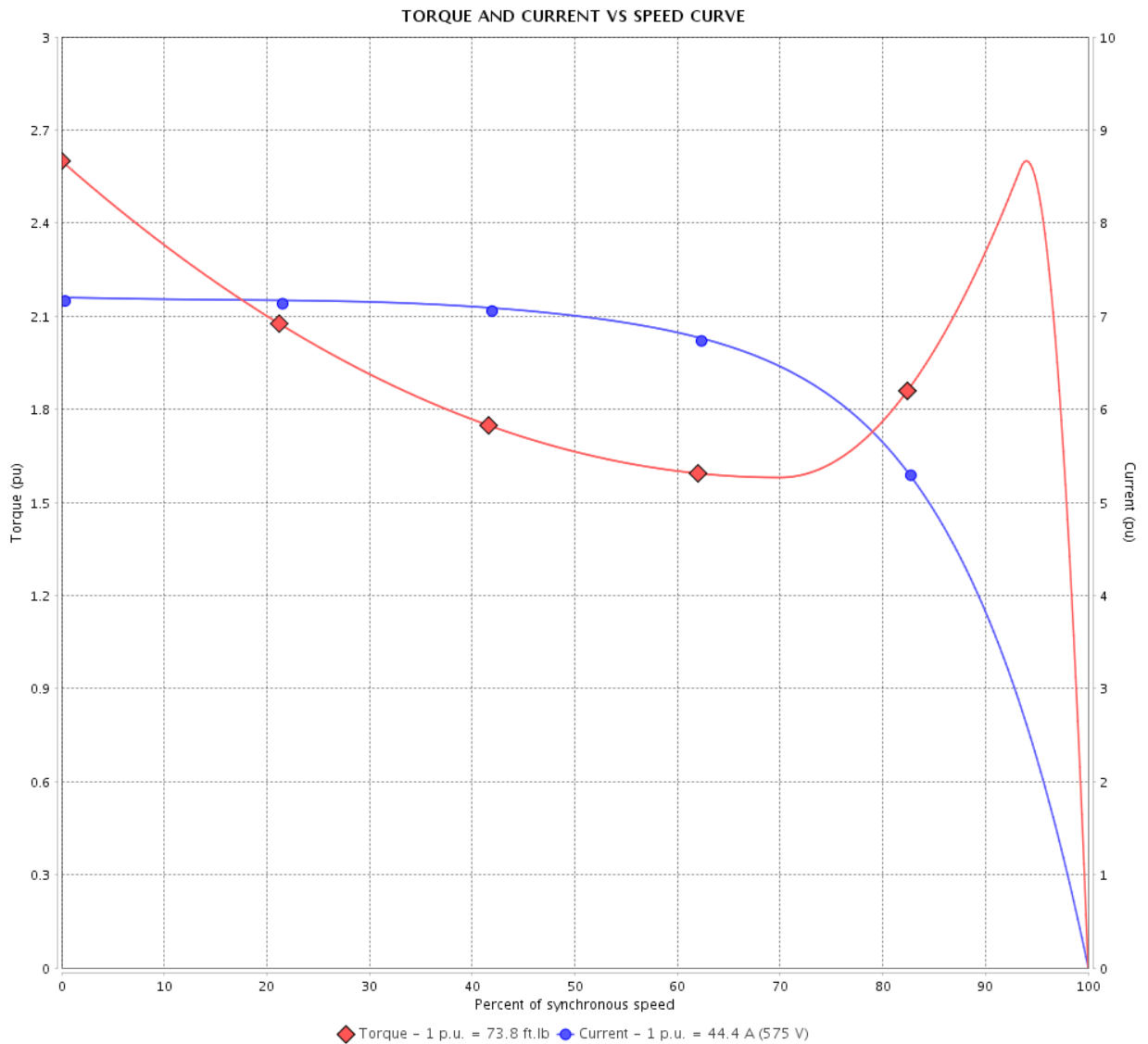
Three Phase Induction Motor - Squirrel Cage

Customer :

Product line : NEMA Premium Efficiency Three-Phase

Product code : 11360894

Catalog # : 05036XT3H326TS



Performance : 575 V 60 Hz 2P

| | | | |
|---------------------|--------------|-----------------------|-----------------|
| Rated current | : 44.4 A | Moment of inertia (J) | : 5.42 sq.ft.lb |
| LRC | : 7.2 | Duty cycle | : Cont.(S1) |
| Rated torque | : 73.8 ft.lb | Insulation class | : F |
| Locked rotor torque | : 260 % | Service factor | : 1.15 |
| Breakdown torque | : 260 % | Temperature rise | : 80 K |
| Rated speed | : 3560 rpm | Design | : B |

Locked rotor time : 59s (cold) 33s (hot)

| Rev. | Changes Summary | Performed | Checked | Date |
|--------------|-----------------|-----------|---------------|----------|
| | | | | |
| Performed by | | | Page 3 / 7 | Revision |
| Checked by | | | | |
| Date | 12/04/2022 | | | |

LOAD PERFORMANCE CURVE

Three Phase Induction Motor - Squirrel Cage

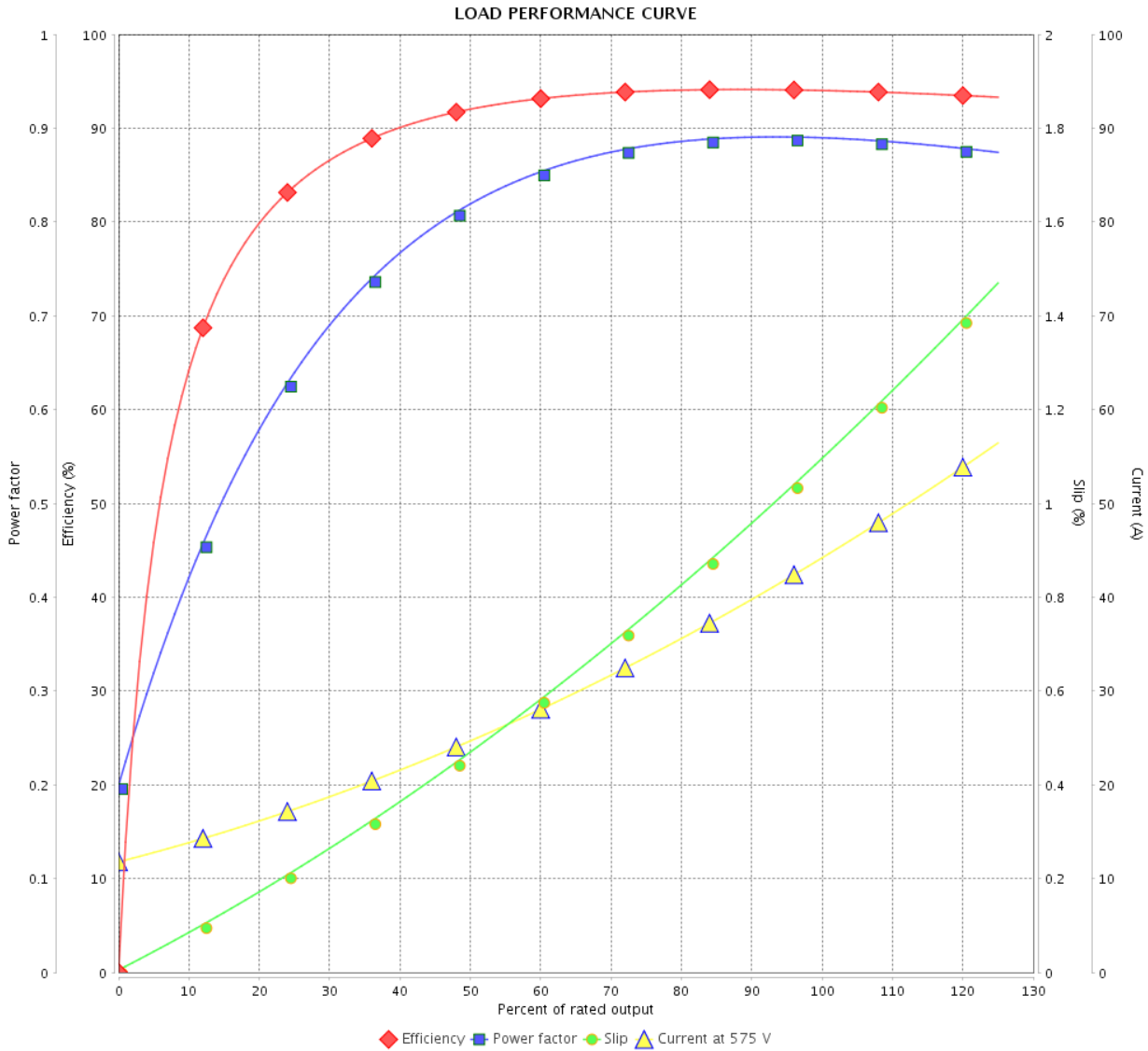


Customer :

Product line : NEMA Premium Efficiency Three-Phase

Product code : 11360894

Catalog # : 05036XT3H326TS



Performance : 575 V 60 Hz 2P

| | | | |
|---------------------|--------------|-----------------------|-----------------|
| Rated current | : 44.4 A | Moment of inertia (J) | : 5.42 sq.ft.lb |
| LRC | : 7.2 | Duty cycle | : Cont.(S1) |
| Rated torque | : 73.8 ft.lb | Insulation class | : F |
| Locked rotor torque | : 260 % | Service factor | : 1.15 |
| Breakdown torque | : 260 % | Temperature rise | : 80 K |
| Rated speed | : 3560 rpm | Design | : B |

| Rev. | Changes Summary | Performed | Checked | Date |
|--------------|-----------------|-----------|---------------|----------|
| | | | | |
| Performed by | | | Page 4 / 7 | Revision |
| Checked by | | | | |
| Date | 12/04/2022 | | | |

THERMAL LIMIT CURVE



Three Phase Induction Motor - Squirrel Cage

Customer :

Product line : NEMA Premium Efficiency Three-Phase
 Product code : 11360894
 Catalog # : 05036XT3H326TS

Performance : 575 V 60 Hz 2P

| | |
|-----------------------------|---------------------------------------|
| Rated current : 44.4 A | Moment of inertia (J) : 5.42 sq.ft.lb |
| LRC : 7.2 | Duty cycle : Cont.(S1) |
| Rated torque : 73.8 ft.lb | Insulation class : F |
| Locked rotor torque : 260 % | Service factor : 1.15 |
| Breakdown torque : 260 % | Temperature rise : 80 K |
| Rated speed : 3560 rpm | Design : B |

Heating constant

Cooling constant

| Rev. | Changes Summary | Performed | Checked | Date |
|--------------|-----------------|-----------|---------------|----------|
| | | | | |
| Performed by | | | Page 5 / 7 | Revision |
| Checked by | | | | |
| Date | 12/04/2022 | | | |

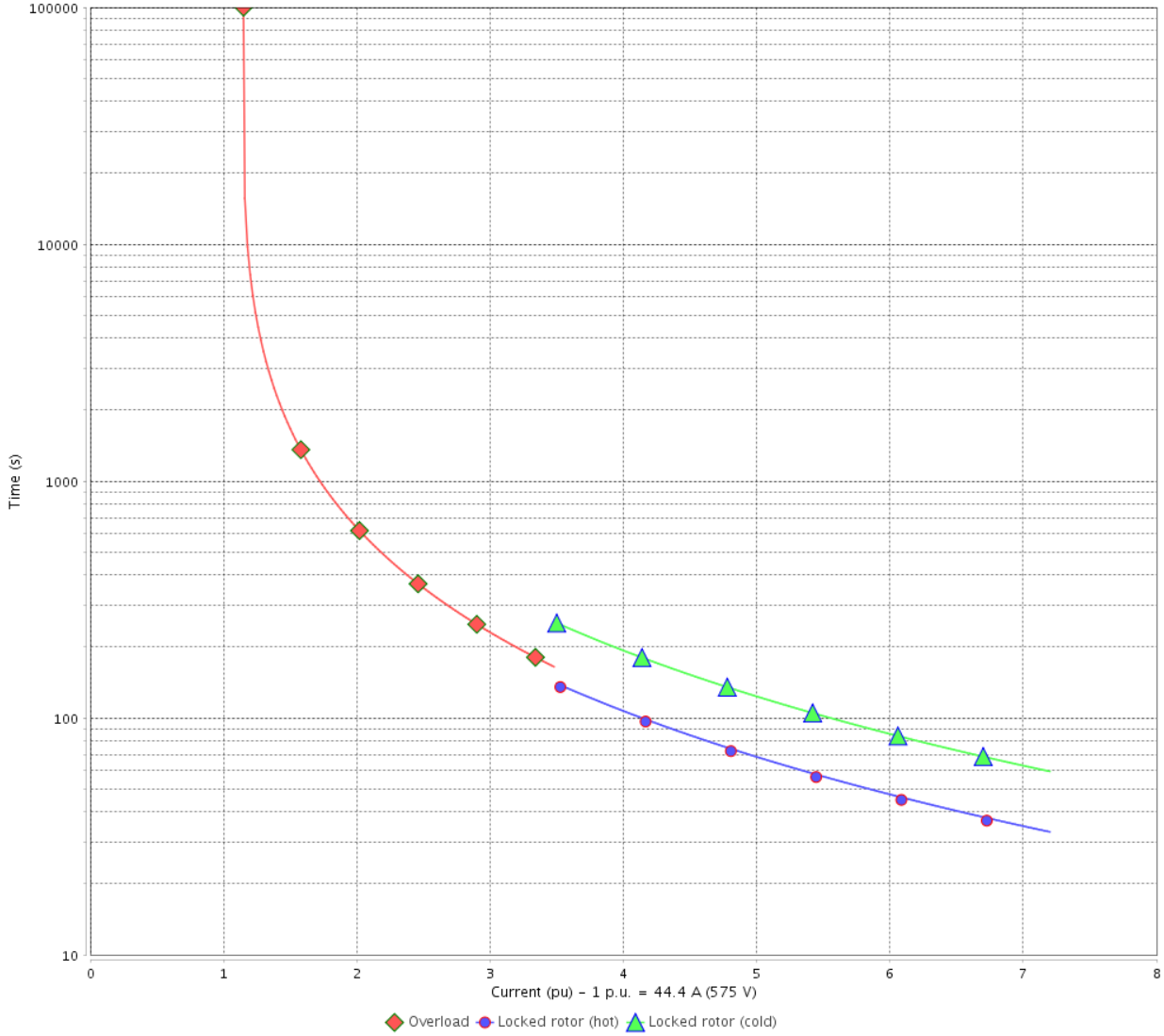
THERMAL LIMIT CURVE

Three Phase Induction Motor - Squirrel Cage



Customer : _____

THERMAL LIMIT CURVE



| Rev. | Changes Summary | Performed | Checked | Date |
|--------------|-----------------|-----------|---------------|----------|
| | | | | |
| Performed by | | | Page 6 / 7 | Revision |
| Checked by | | | | |
| Date | 12/04/2022 | | | |

VFD OPERATION CURVE

Three Phase Induction Motor - Squirrel Cage

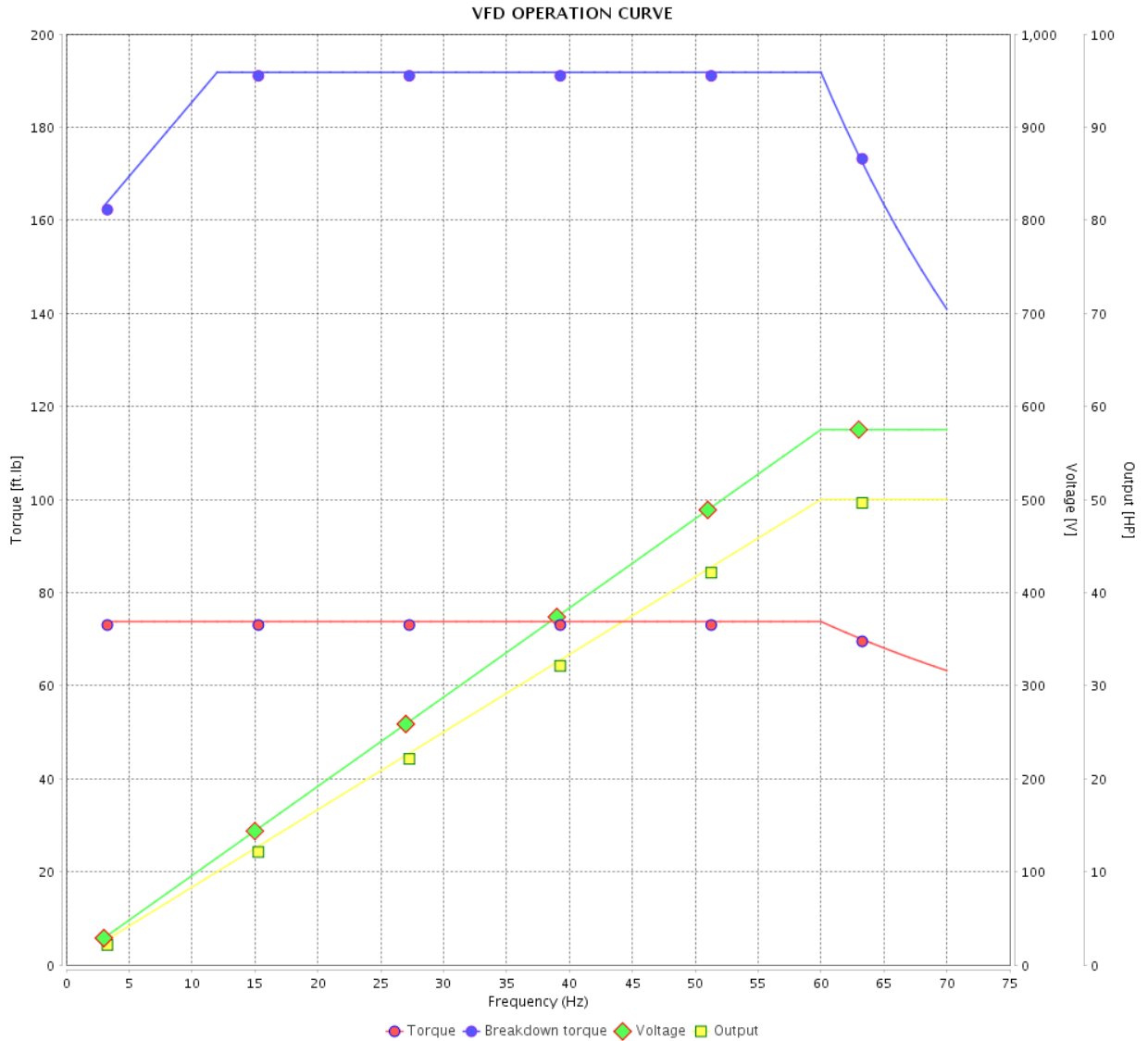


Customer :

Product line : NEMA Premium Efficiency Three-Phase

Product code : 11360894

Catalog # : 05036XT3H326TS

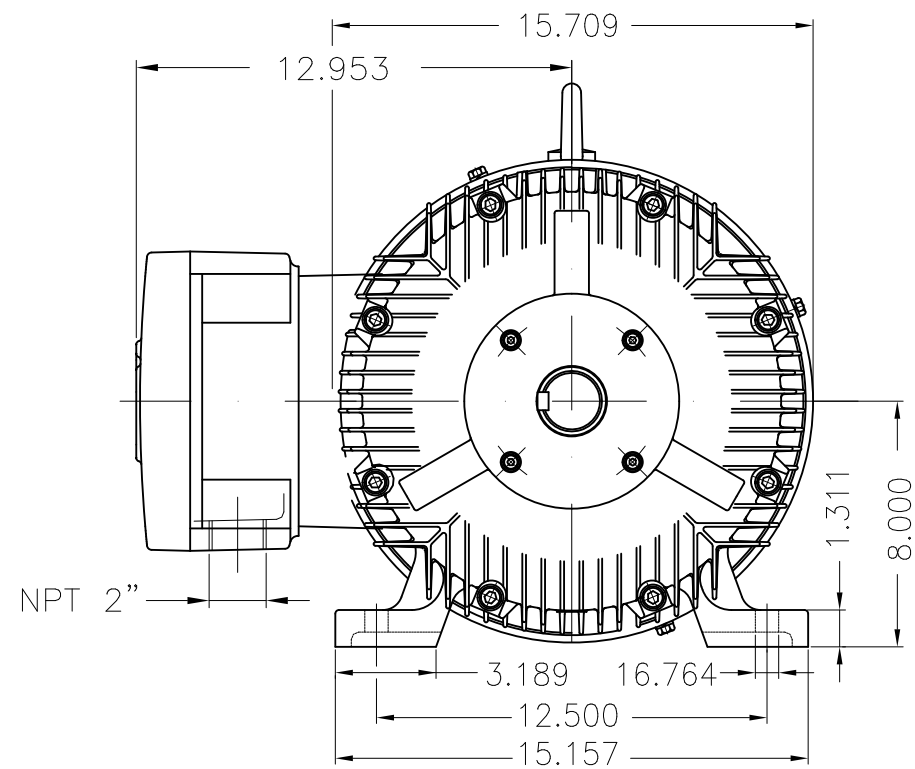


Performance : 575 V 60 Hz 2P

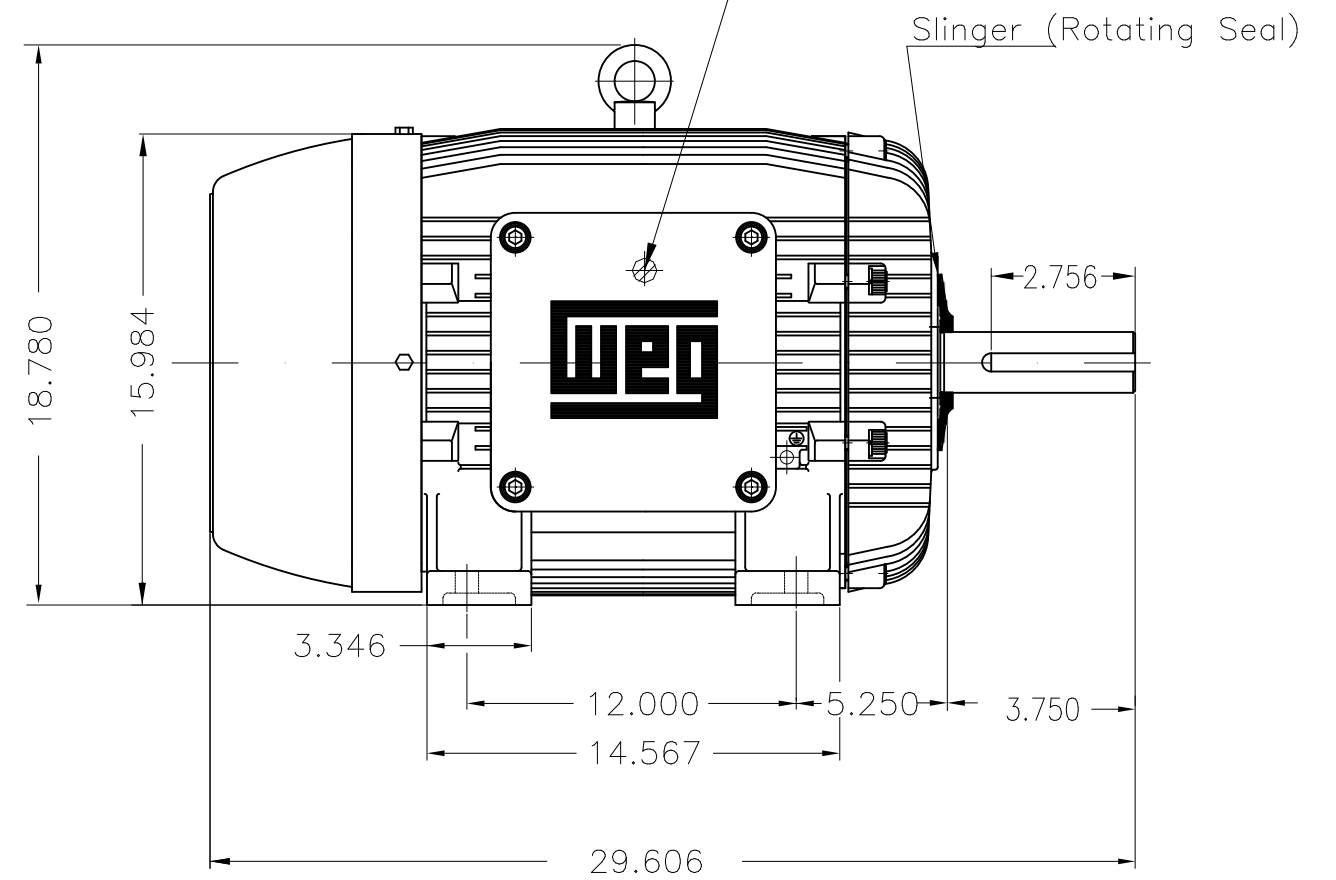
Rated current : 44.4 A
 LRC : 7.2
 Rated torque : 73.8 ft.lb
 Locked rotor torque : 260 %
 Breakdown torque : 260 %
 Rated speed : 3560 rpm

Moment of inertia (J) : 5.42 sq.ft.lb
 Duty cycle : Cont.(S1)
 Insulation class : F
 Service factor : 1.15
 Temperature rise : 80 K
 Design : B

| Rev. | Changes Summary | Performed | Checked | Date |
|--------------|-----------------|-----------|---------|----------|
| | | | | |
| Performed by | | | Page | Revision |
| Checked by | | | | |
| Date | | | | |



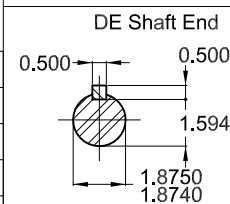
Grounding for leads 5.2–35 mm² / 10–2 AWG



50 HP 02 Poles 60 Hz

Dimensions in inches

Without Grease fitting
Grease - POLYUREA ESTER OIL
Color RAL 5009
Painting plan 202P
Mounting B3R(D)



| ECM | LOC | SUMMARY OF MODIFICATIONS | EXECUTED | CHECKED | RELEASED | DATE | VER |
|----------|-----------|--|---------------------|---------|----------|------|-----|
| EXECUTED | PIRWBUSER | THREE PH. MOTOR EXPLOSION PROOF PREM. EFF. | | | | | |
| CHECKED | | FRAME 326TS IP55 TEFC | | | | | |
| RELEASED | | | | | | | |
| REL DT. | WMO | Jaragua do Sul | Product Engineering | | | | |

PREVIEW
WDD



SHEET 1 / 1