

DATA SHEET



Three Phase Induction Motor - Squirrel Cage

| | | | | |
|--|--|-----------|---------|----------|
| Customer : | | | | |
| Product line | : W40 JM Pump NEMA Premium Efficiency Three-Phase | | | |
| Product code : | 14837653 | | | |
| Catalog # : | 06036OT3H326JMV-W40 | | | |
| Frame : 324/6JM Output : 60 HP (45 kW) Poles : 2 Frequency : 60 Hz Rated voltage : 575 V Rated current : 56.8 A L. R. Amperes : 358 A LRC : 6.3x(Code G) No load current : 16.0 A Rated speed : 3560 rpm Slip : 1.11 % Rated torque : 88.5 ft.lb Locked rotor torque : 220 % Breakdown torque : 229 % Insulation class : F Service factor : 1.25 Moment of inertia (J) : 3.82 sq.ft.lb Design : B | Locked rotor time : 21s (cold) 12s (hot) Temperature rise : 80 K Duty cycle : Cont.(S1) Ambient temperature : -20°C to +40°C Altitude : 1000 m.a.s.l. Protection degree : IP23 Cooling method : IC01 - ODP Mounting : W-6 Rotation ¹ : Both (CW and CCW) Noise level ² : 75.0 dB(A) Starting method : Direct On Line Approx. weight ³ : 473 lb | | | |
| Output | 25% 50% 75% 100% | | | |
| Efficiency (%) | 91.7 92.4 93.0 93.6 | | | |
| Power Factor | 0.51 0.73 0.82 0.85 | | | |
| Foundation loads | | | | |
| Max. traction | | | | |
| Max. compression | | | | |
| Bearing type | : <u>Drive end</u> 6312 Z C3 <u>Non drive end</u> 6211 Z C3 | | | |
| Sealing | : Without Bearing Seal Without Bearing Seal | | | |
| Lubrication interval | : 9829 h 14226 h | | | |
| Lubricant amount | : 21 g 11 g | | | |
| Lubricant type | : Mobil Polyrex EM | | | |
| Notes | | | | |
| This revision replaces and cancel the previous one, which must be eliminated. (1) Looking the motor from the shaft end. (2) Measured at 1m and with tolerance of +3dB(A). (3) Approximate weight subject to changes after manufacturing process. (4) At 100% of full load. | | | | |
| These are average values based on tests with sinusoidal power supply, subject to the tolerances stipulated in NEMA MG-1. | | | | |
| Rev. | Changes Summary | Performed | Checked | Date |
| Performed by | | | | |
| Checked by | | | Page | Revision |
| Date | 13/04/2022 | | 1 / 6 | |

TORQUE AND CURRENT VS SPEED CURVE

Three Phase Induction Motor - Squirrel Cage



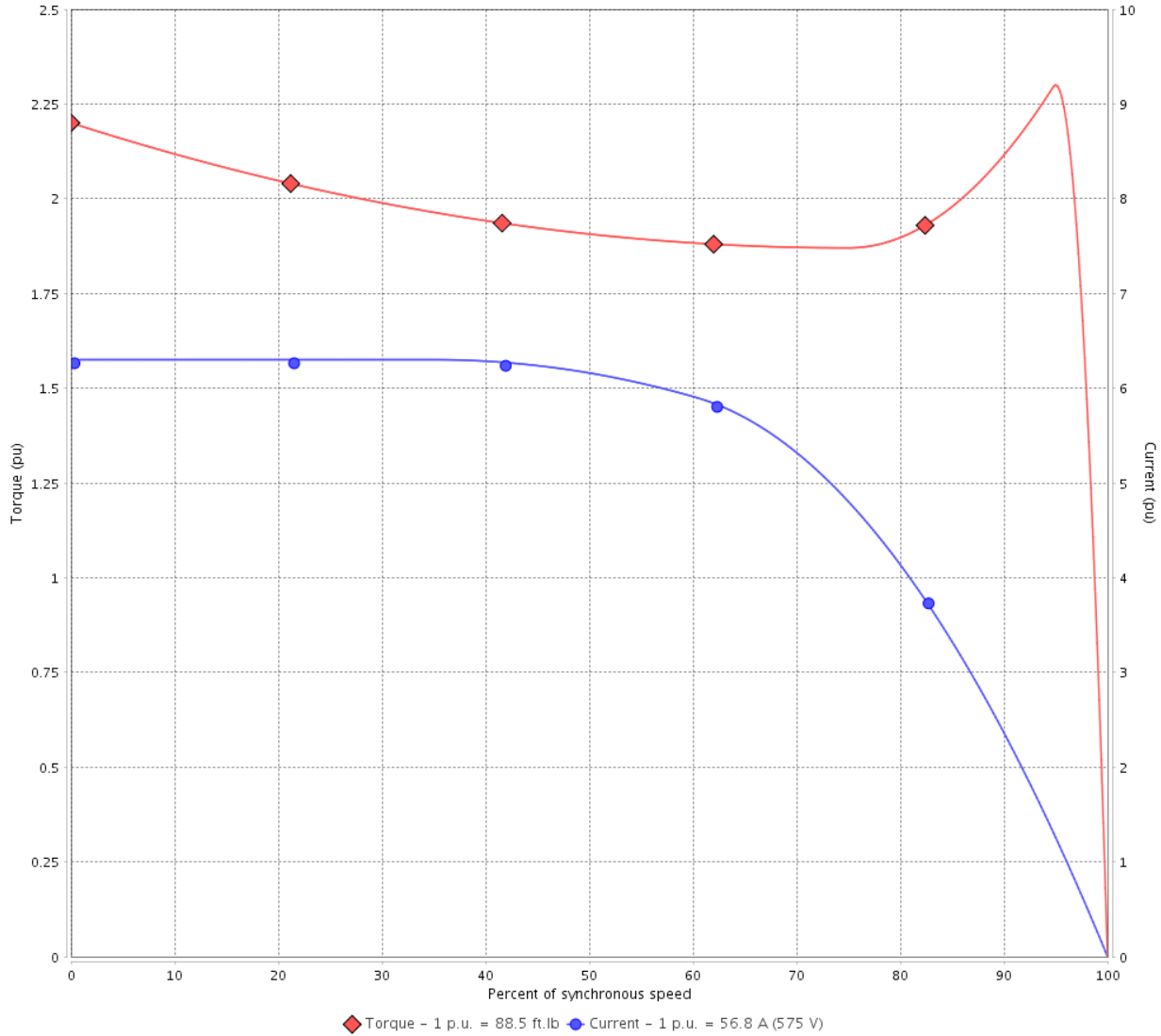
Customer :

Product line : W40 JM Pump NEMA Premium Efficiency Three-Phase

Product code : 14837653

Catalog # : 06036OT3H326JMV-W40

TORQUE AND CURRENT VS SPEED CURVE



Performance : 575 V 60 Hz 2P

| | | | |
|---------------------|--------------|-----------------------|-----------------|
| Rated current | : 56.8 A | Moment of inertia (J) | : 3.82 sq.ft.lb |
| LRC | : 6.3 | Duty cycle | : Cont.(S1) |
| Rated torque | : 88.5 ft.lb | Insulation class | : F |
| Locked rotor torque | : 220 % | Service factor | : 1.25 |
| Breakdown torque | : 229 % | Temperature rise | : 80 K |
| Rated speed | : 3560 rpm | Design | : B |

Locked rotor time : 21s (cold) 12s (hot)

| Rev. | Changes Summary | Performed | Checked | Date |
|--------------|-----------------|-----------|---------------|----------|
| | | | | |
| Performed by | | | Page 2 / 6 | Revision |
| Checked by | | | | |
| Date | 13/04/2022 | | | |

LOAD PERFORMANCE CURVE

Three Phase Induction Motor - Squirrel Cage

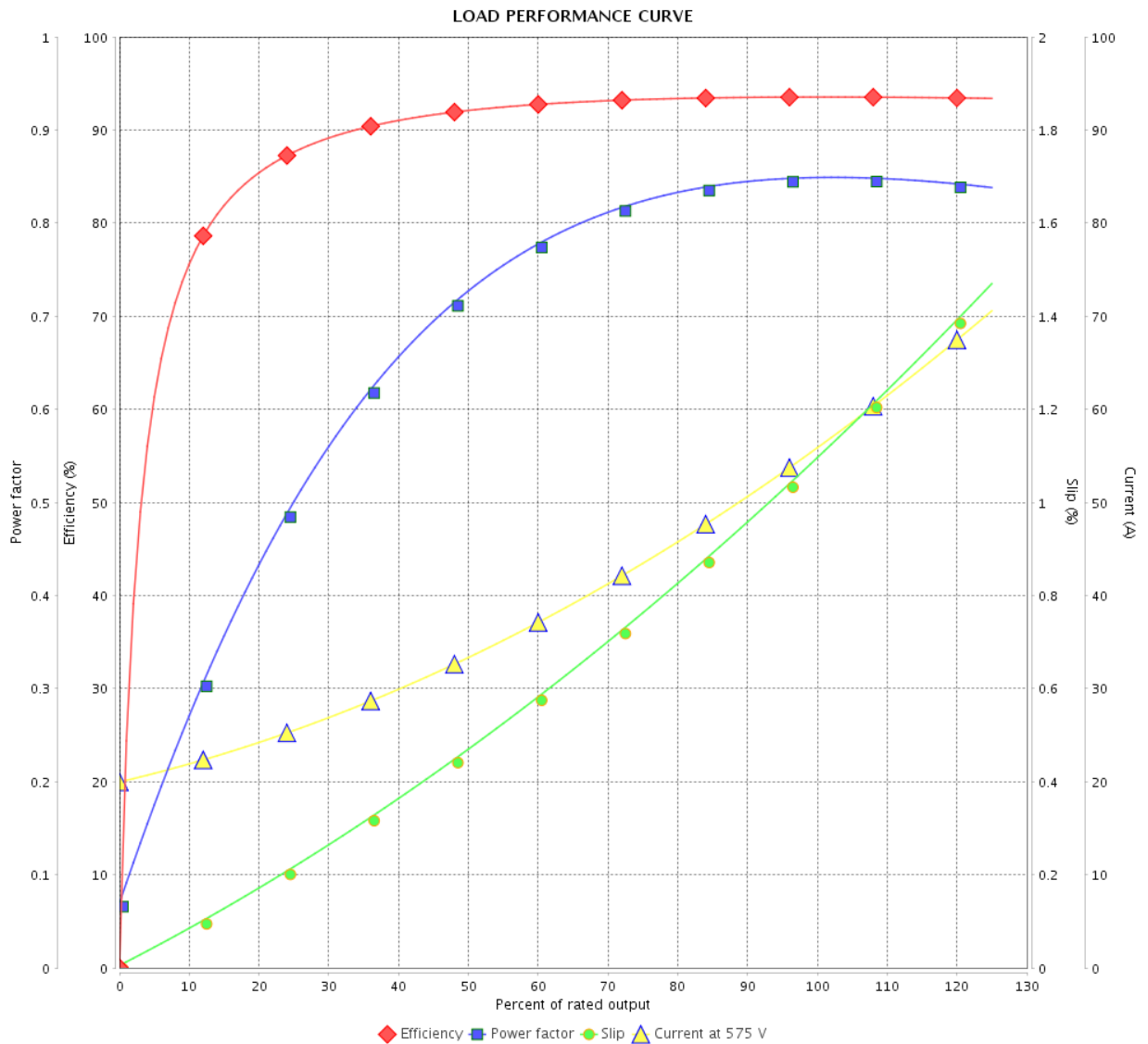


Customer :

Product line : W40 JM Pump NEMA Premium
Efficiency Three-Phase

Product code : 14837653

Catalog # : 06036OT3H326JMV-W40



Performance : 575 V 60 Hz 2P

Rated current : 56.8 A
 LRC : 6.3
 Rated torque : 88.5 ft.lb
 Locked rotor torque : 220 %
 Breakdown torque : 229 %
 Rated speed : 3560 rpm

Moment of inertia (J) : 3.82 sq.ft.lb
 Duty cycle : Cont.(S1)
 Insulation class : F
 Service factor : 1.25
 Temperature rise : 80 K
 Design : B

| Rev. | Changes Summary | Performed | Checked | Date |
|--------------|-----------------|------------|---------|----------|
| | | | | |
| Performed by | | Page | | Revision |
| Checked by | | 3 / 6 | | |
| Date | | 13/04/2022 | | |

THERMAL LIMIT CURVE

Three Phase Induction Motor - Squirrel Cage



Customer :

Product line : W40 JM Pump NEMA Premium
Efficiency Three-Phase

Product code : 14837653

Catalog # : 06036OT3H326JMV-W40

Performance : 575 V 60 Hz 2P

| | | | |
|---------------------|--------------|-----------------------|-----------------|
| Rated current | : 56.8 A | Moment of inertia (J) | : 3.82 sq.ft.lb |
| LRC | : 6.3 | Duty cycle | : Cont.(S1) |
| Rated torque | : 88.5 ft.lb | Insulation class | : F |
| Locked rotor torque | : 220 % | Service factor | : 1.25 |
| Breakdown torque | : 229 % | Temperature rise | : 80 K |
| Rated speed | : 3560 rpm | Design | : B |

Heating constant

Cooling constant

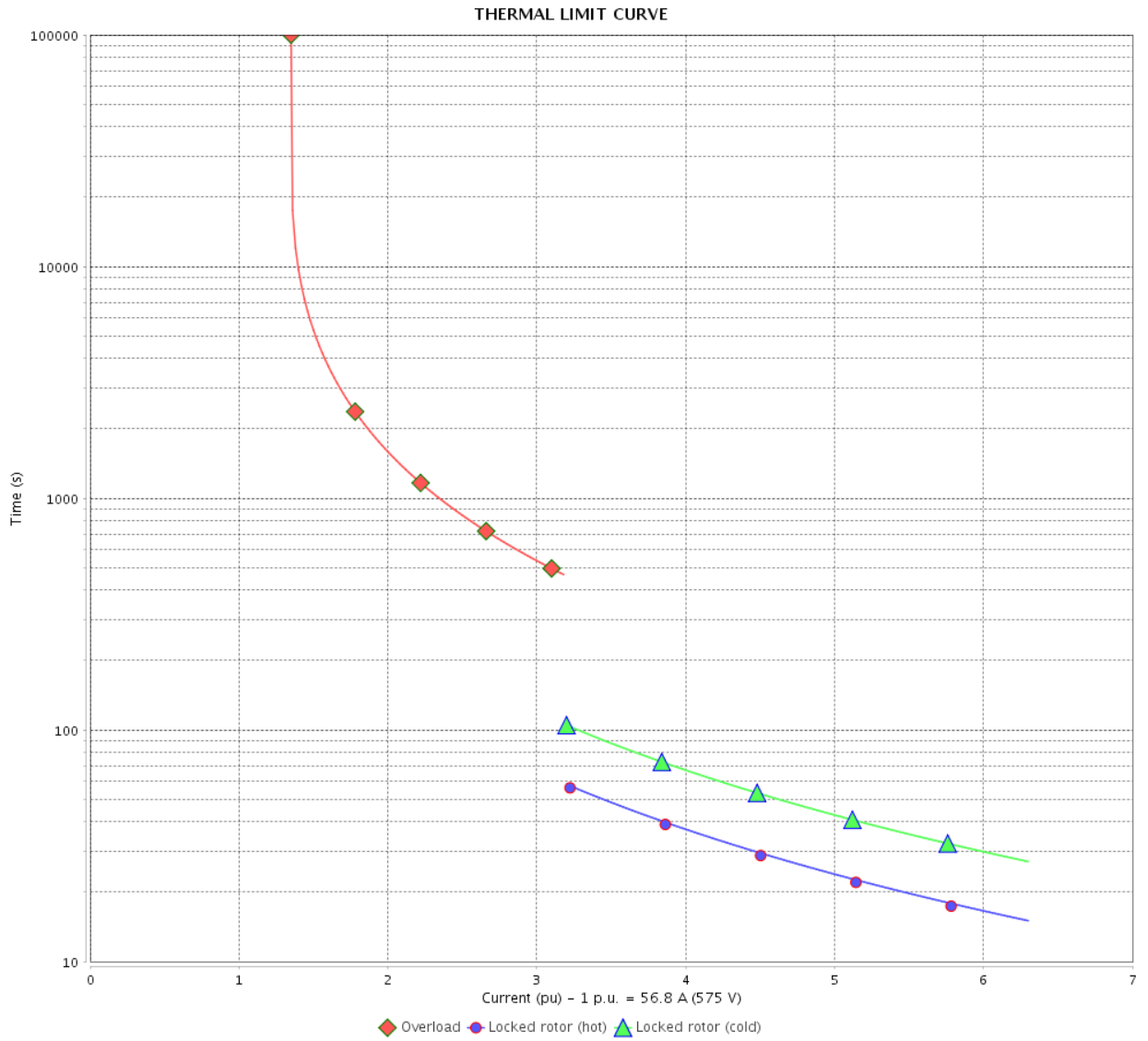
| Rev. | Changes Summary | Performed | Checked | Date |
|--------------|-----------------|-----------|---------|----------|
| | | | | |
| Performed by | | | | |
| Checked by | | | Page | Revision |
| Date | 13/04/2022 | | 4 / 6 | |

THERMAL LIMIT CURVE

Three Phase Induction Motor - Squirrel Cage



Customer : _____



| Rev. | Changes Summary | Performed | Checked | Date |
|--------------|-----------------|---------------|---------|----------|
| | | | | |
| Performed by | | Page 5 / 6 | | Revision |
| Checked by | | | | |
| Date | | | | |

VFD OPERATION CURVE

Three Phase Induction Motor - Squirrel Cage



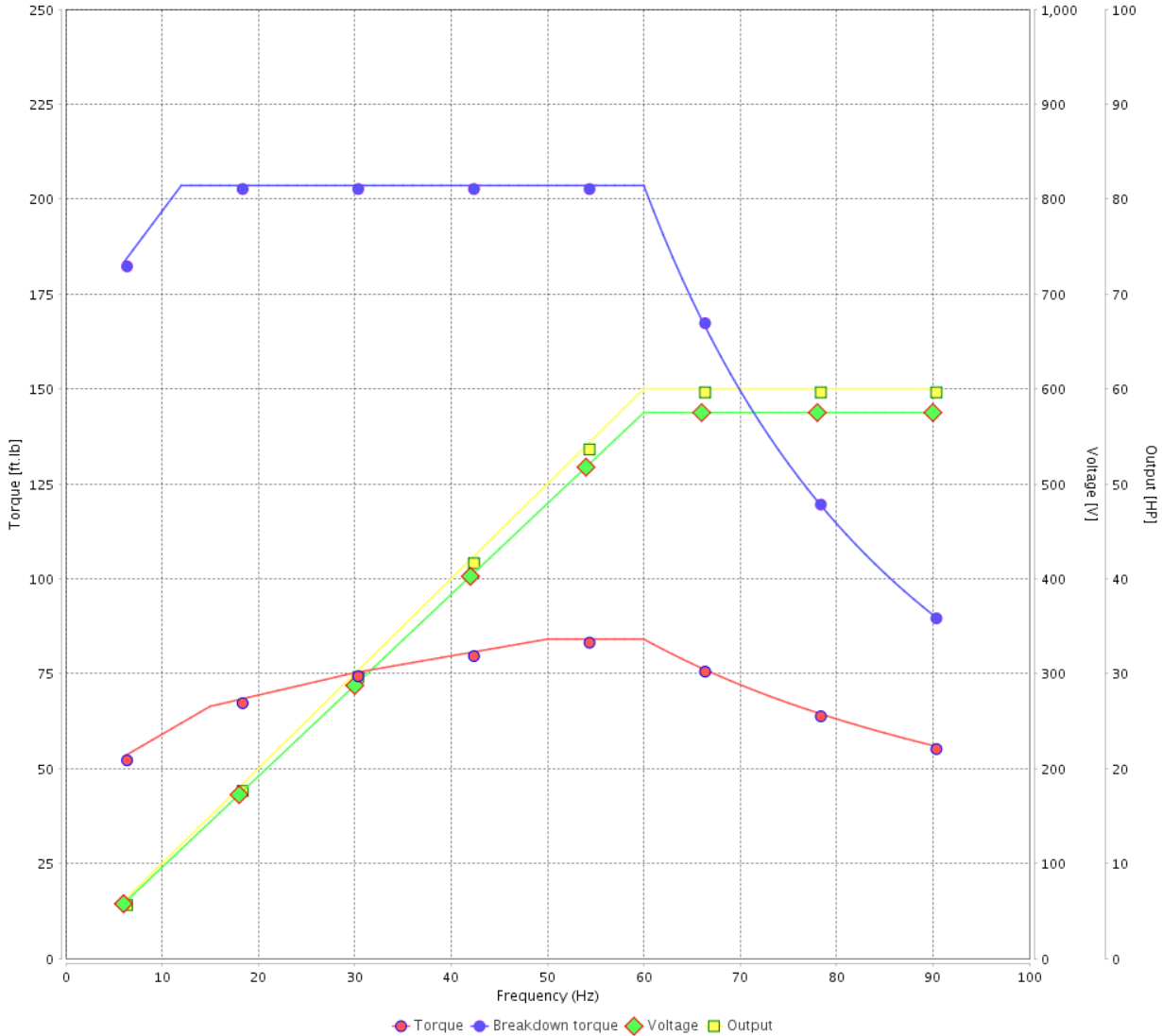
Customer :

Product line : W40 JM Pump NEMA Premium Efficiency Three-Phase

Product code : 14837653

Catalog # : 06036OT3H326JMV-W40

VFD OPERATION CURVE

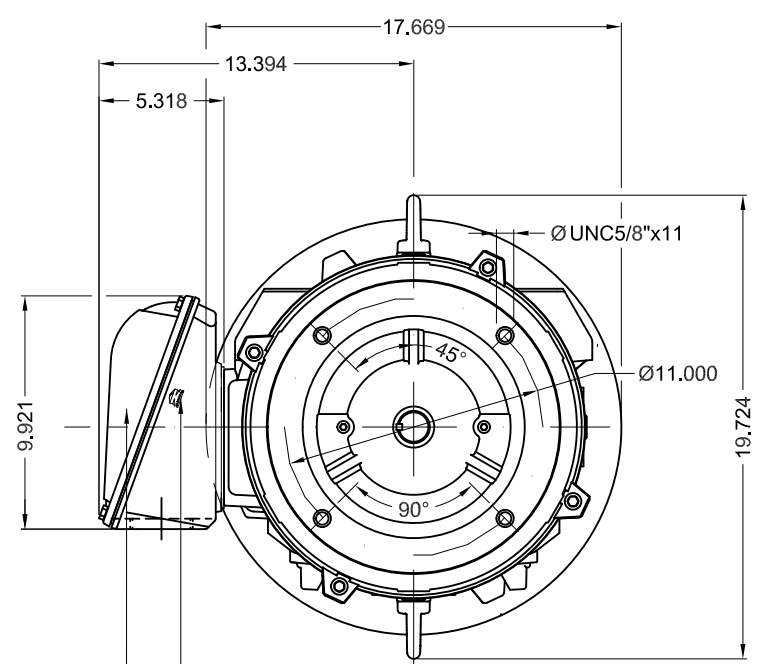


Performance : 575 V 60 Hz 2P

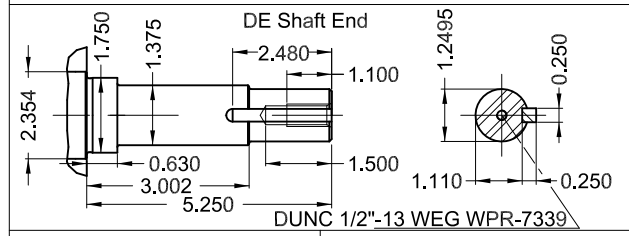
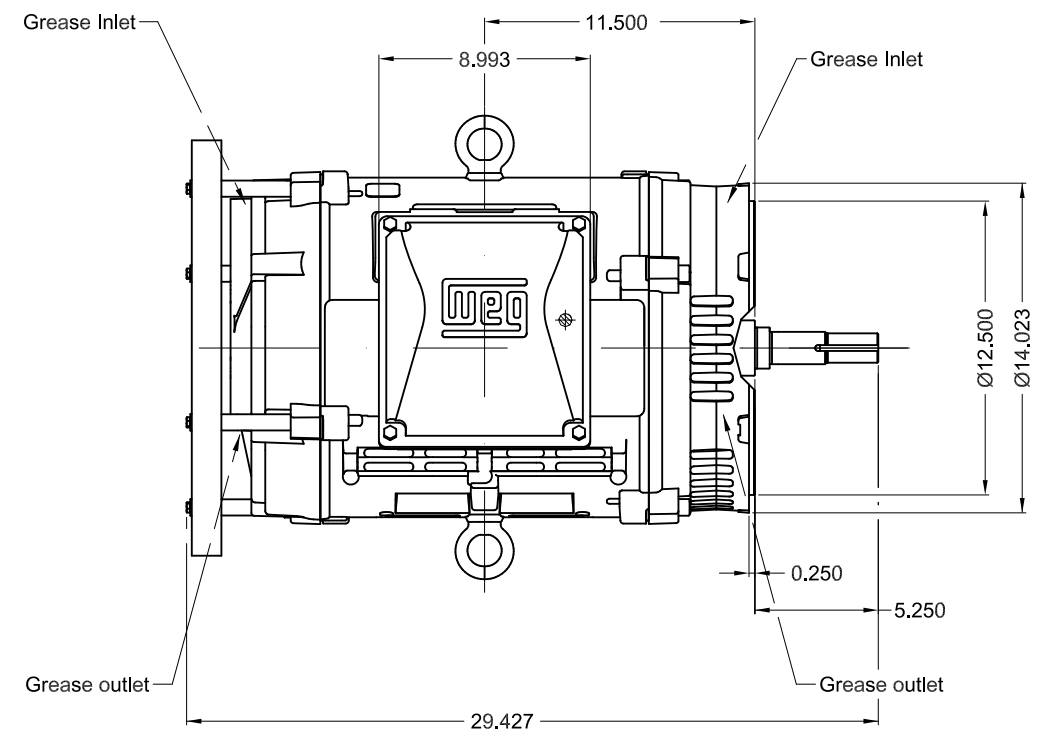
Rated current : 56.8 A
 LRC : 6.3
 Rated torque : 88.5 ft.lb
 Locked rotor torque : 220 %
 Breakdown torque : 229 %
 Rated speed : 3560 rpm

Moment of inertia (J) : 3.82 sq.ft.lb
 Duty cycle : Cont.(S1)
 Insulation class : F
 Service factor : 1.25
 Temperature rise : 80 K
 Design : B

| Rev. | Changes Summary | Performed | Checked | Date |
|--------------|-----------------|-----------|---------|----------|
| | | | | |
| Performed by | | | Page | Revision |
| Checked by | | | | |
| Date | | | | |



Grounding for leads 5.2-35 mm² / 10-2 AWG
Main terminal box
NPT 2"



60 HP 02 Poles 60 Hz A

1:8

| ECM | LOC | SUMMARY OF MODIFICATIONS | EXECUTED | CHECKED | RELEASED | DATE | VER |
|----------|-----------|--|---------------------|---------|----------|------|-----|
| EXECUTED | PIRWBUSER | THREE PH. MOTOR W40 CLOSE COUPLED PUMP JM TYPE PREM-EST. | | | | | |
| CHECKED | | FRAME 324/6JM IP23 ODP | | | | | |
| RELEASED | | | | | | | |
| REL DT. | WMO | Jaragua do Sul | Product Engineering | SHEET | 1 / 1 | | |

Color RAL 5009
Painting plan 203A
Mounting NEMA W-6
Mounting V18

PREVIEW
WDD

