

DATA SHEET



Three Phase Induction Motor - Squirrel Cage

Customer :							
Product line		: W40 NEMA Premium Efficiency Three-Phase		Product code : 14497528			
				Catalog # : 06036OT3H326TS-W40			
Frame	:	: 324/6TS		Locked rotor time	:	: 27s (cold) 15s (hot)	
Output	:	: 60 HP (45 kW)		Temperature rise	:	: 80 K	
Poles	:	: 2		Duty cycle	:	: Cont.(S1)	
Frequency	:	: 60 Hz		Ambient temperature	:	: -20°C to +40°C	
Rated voltage	:	: 575 V		Altitude	:	: 1000 m.a.s.l.	
Rated current	:	: 56.8 A		Protection degree	:	: IP23	
L. R. Amperes	:	: 358 A		Cooling method	:	: IC01 - ODP	
LRC	:	: 6.3x(Code G)		Mounting	:	: F-1	
No load current	:	: 20.0 A		Rotation ¹	:	: Both (CW and CCW)	
Rated speed	:	: 3560 rpm		Noise level ²	:	: 75.0 dB(A)	
Slip	:	: 1.11 %		Starting method	:	: Direct On Line	
Rated torque	:	: 88.5 ft.lb		Approx. weight ³	:	: 460 lb	
Locked rotor torque	:	: 220 %					
Breakdown torque	:	: 229 %					
Insulation class	:	: F					
Service factor	:	: 1.25					
Moment of inertia (J)	:	: 3.82 sq.ft.lb					
Design	:	: B					
Output	50%	75%	100%	Foundation loads			
Efficiency (%)	92.4	93.0	93.6	Max. traction			
Power Factor	0.73	0.82	0.85	Max. compression			
		<u>Drive end</u>		<u>Non drive end</u>			
Bearing type	:	6312 Z C3		6211 Z C3			
Sealing	:	Without Bearing Seal		Without Bearing Seal			
Lubrication interval	:	19658 h		20000 h			
Lubricant amount	:	21 g		11 g			
Lubricant type	:	Mobil Polyrex EM					
Notes							
This revision replaces and cancel the previous one, which must be eliminated. (1) Looking the motor from the shaft end. (2) Measured at 1m and with tolerance of +3dB(A). (3) Approximate weight subject to changes after manufacturing process. (4) At 100% of full load.				These are average values based on tests with sinusoidal power supply, subject to the tolerances stipulated in NEMA MG-1.			
Rev.	Changes Summary			Performed	Checked	Date	
Performed by							
Checked by					Page	Revision	
Date	13/04/2022				1 / 6		

TORQUE AND CURRENT VS SPEED CURVE

Three Phase Induction Motor - Squirrel Cage



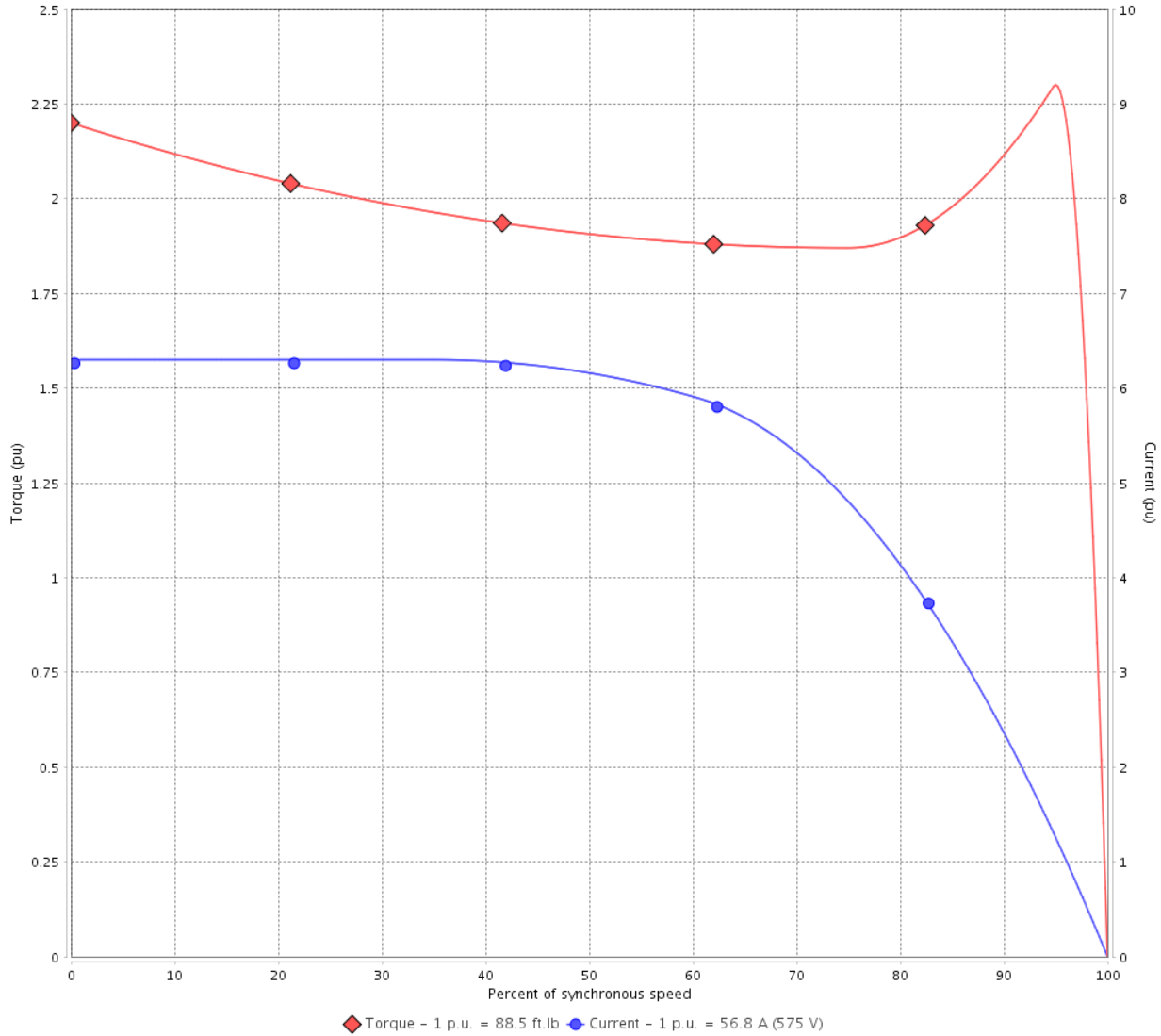
Customer :

Product line : W40 NEMA Premium Efficiency
Three-Phase

Product code : 14497528

Catalog # : 06036OT3H326TS-W40

TORQUE AND CURRENT VS SPEED CURVE



Performance : 575 V 60 Hz 2P

Rated current	: 56.8 A	Moment of inertia (J)	: 3.82 sq.ft.lb
LRC	: 6.3	Duty cycle	: Cont.(S1)
Rated torque	: 88.5 ft.lb	Insulation class	: F
Locked rotor torque	: 220 %	Service factor	: 1.25
Breakdown torque	: 229 %	Temperature rise	: 80 K
Rated speed	: 3560 rpm	Design	: B

Locked rotor time : 27s (cold) 15s (hot)

Rev.	Changes Summary	Performed	Checked	Date
Performed by			Page 2 / 6	Revision
Checked by				
Date	13/04/2022			

LOAD PERFORMANCE CURVE

Three Phase Induction Motor - Squirrel Cage

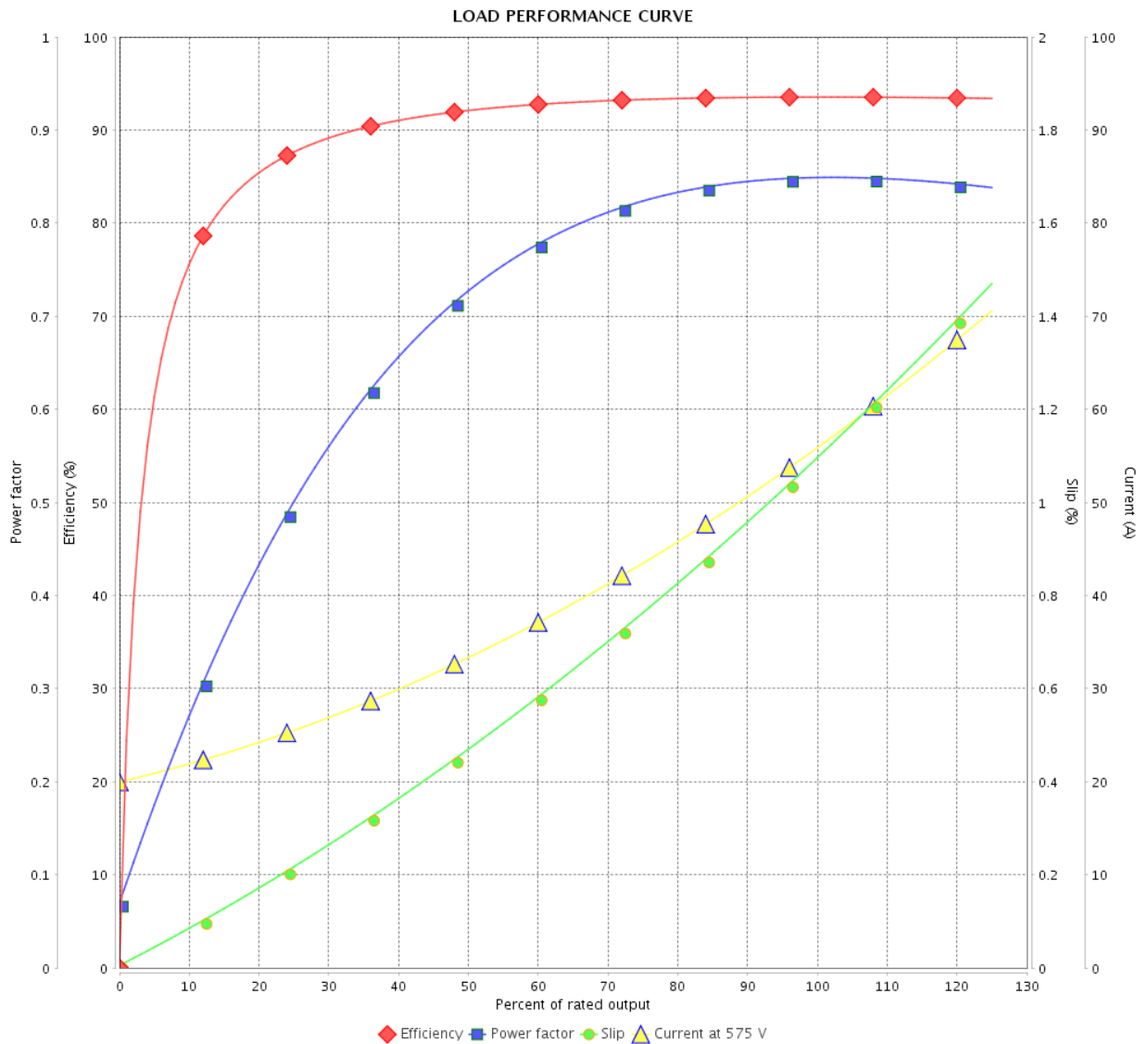


Customer :

Product line : W40 NEMA Premium Efficiency
Three-Phase

Product code : 14497528

Catalog # : 06036OT3H326TS-W40



Performance : 575 V 60 Hz 2P

Rated current : 56.8 A
LRC : 6.3
Rated torque : 88.5 ft.lb
Locked rotor torque : 220 %
Breakdown torque : 229 %
Rated speed : 3560 rpm

Moment of inertia (J) : 3.82 sq.ft.lb
Duty cycle : Cont.(S1)
Insulation class : F
Service factor : 1.25
Temperature rise : 80 K
Design : B

Rev.	Changes Summary	Performed	Checked	Date
Performed by		Page		Revision
Checked by		3 / 6		
Date		13/04/2022		

THERMAL LIMIT CURVE



Three Phase Induction Motor - Squirrel Cage

Customer :

Product line : W40 NEMA Premium Efficiency
Three-Phase

Product code : 14497528

Catalog # : 06036OT3H326TS-W40

Performance : 575 V 60 Hz 2P

Rated current	: 56.8 A	Moment of inertia (J)	: 3.82 sq.ft.lb
LRC	: 6.3	Duty cycle	: Cont.(S1)
Rated torque	: 88.5 ft.lb	Insulation class	: F
Locked rotor torque	: 220 %	Service factor	: 1.25
Breakdown torque	: 229 %	Temperature rise	: 80 K
Rated speed	: 3560 rpm	Design	: B

Heating constant

Cooling constant

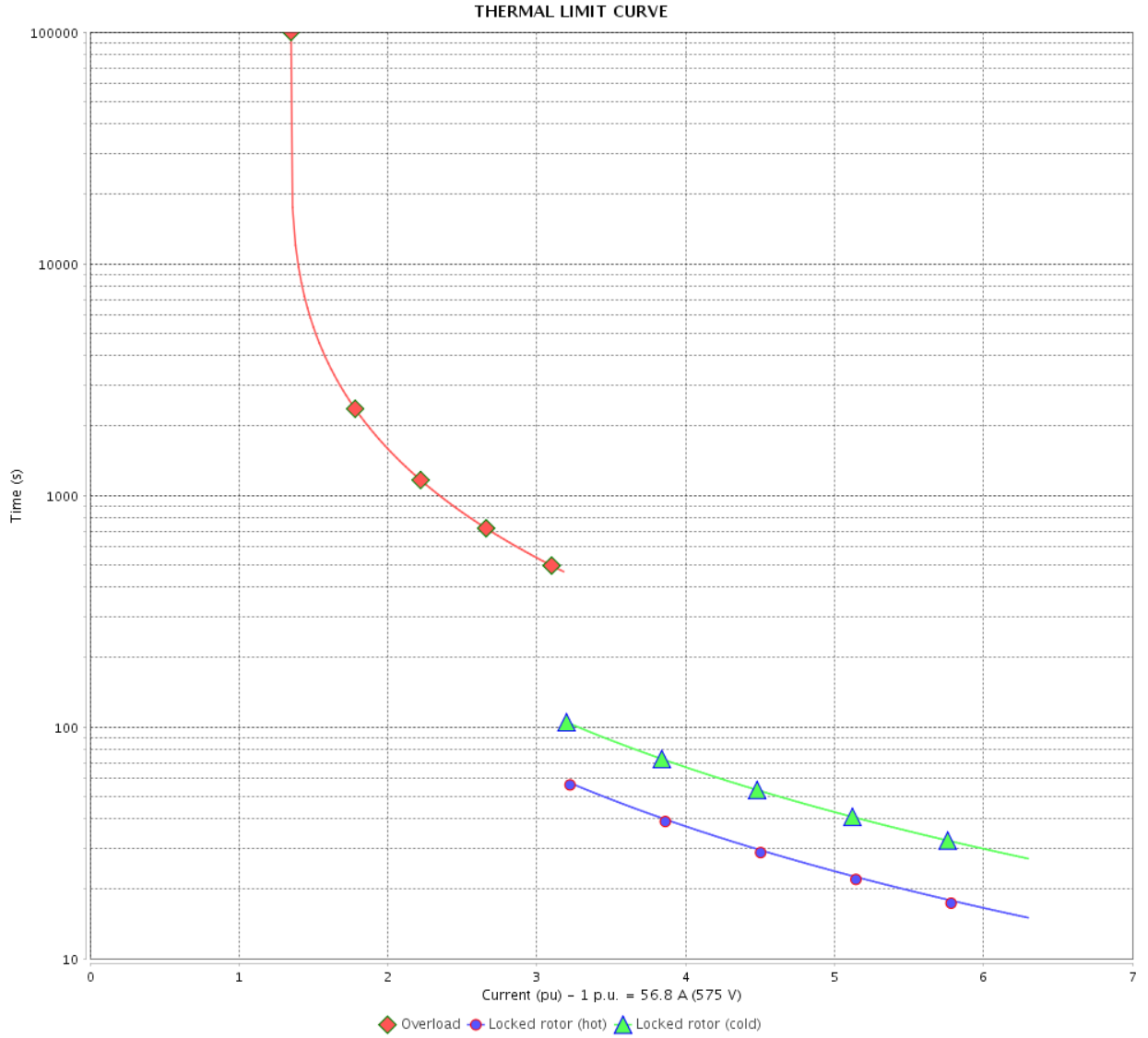
Rev.	Changes Summary	Performed	Checked	Date
Performed by				
Checked by			Page	Revision
Date	13/04/2022		4 / 6	

THERMAL LIMIT CURVE

Three Phase Induction Motor - Squirrel Cage



Customer : _____



Rev.	Changes Summary	Performed	Checked	Date
Performed by		Page		Revision
Checked by		5 / 6		
Date		13/04/2022		

VFD OPERATION CURVE

Three Phase Induction Motor - Squirrel Cage



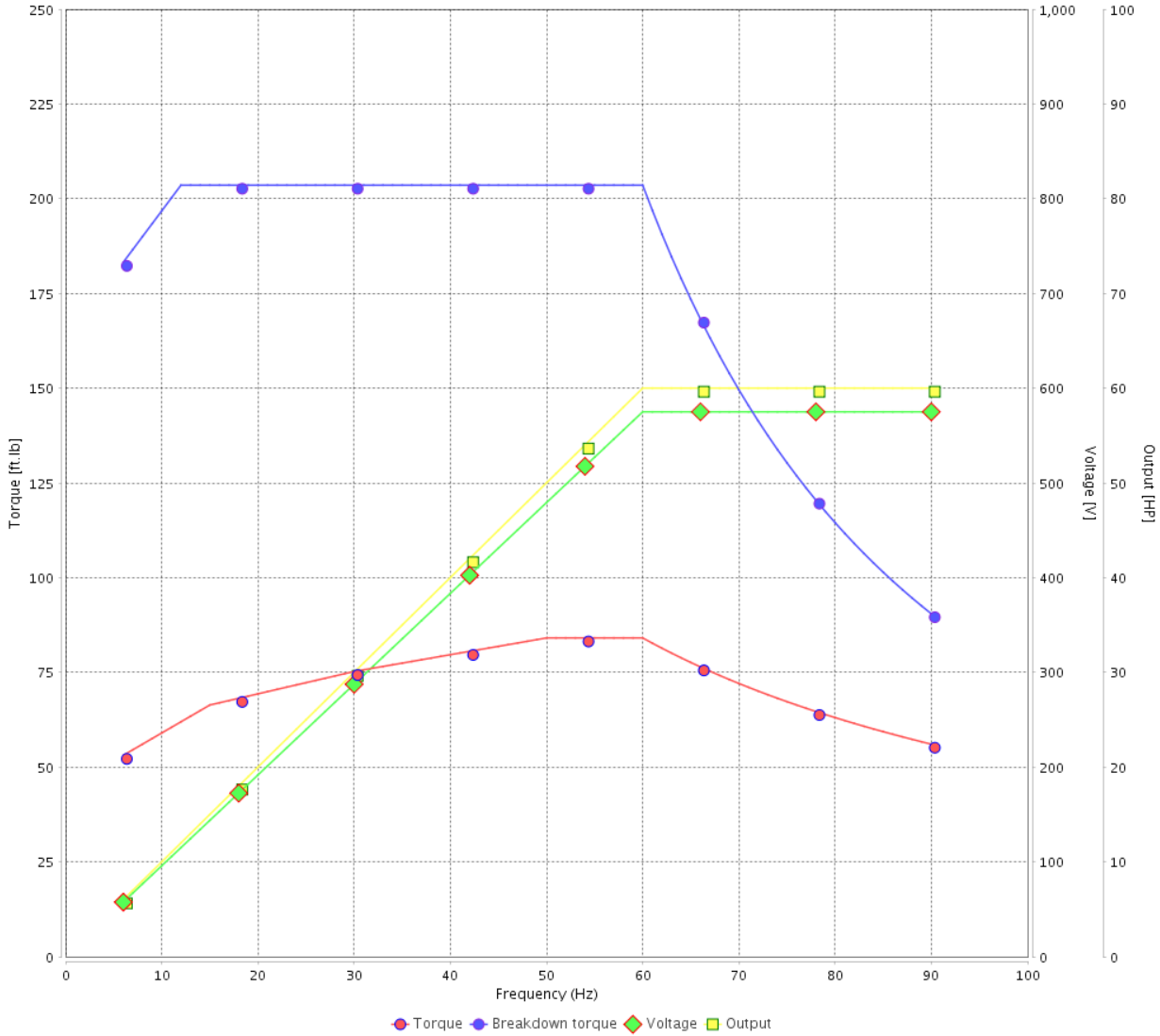
Customer :

Product line : W40 NEMA Premium Efficiency Three-Phase

Product code : 14497528

Catalog # : 06036OT3H326TS-W40

VFD OPERATION CURVE

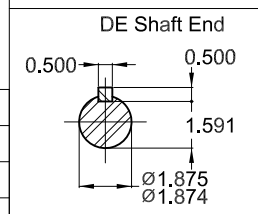
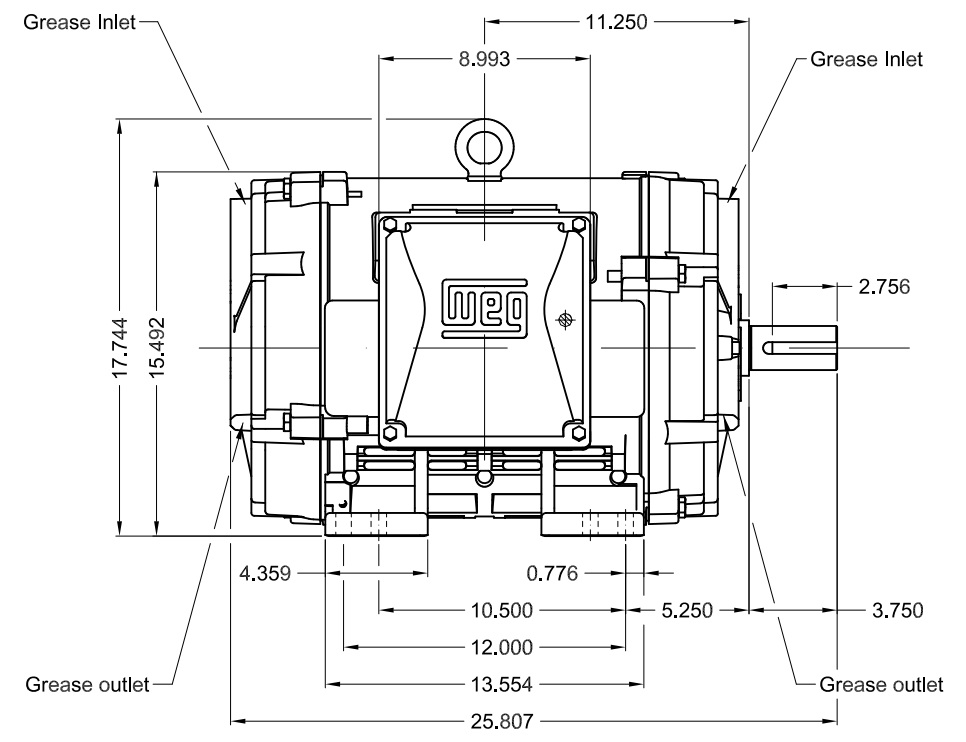
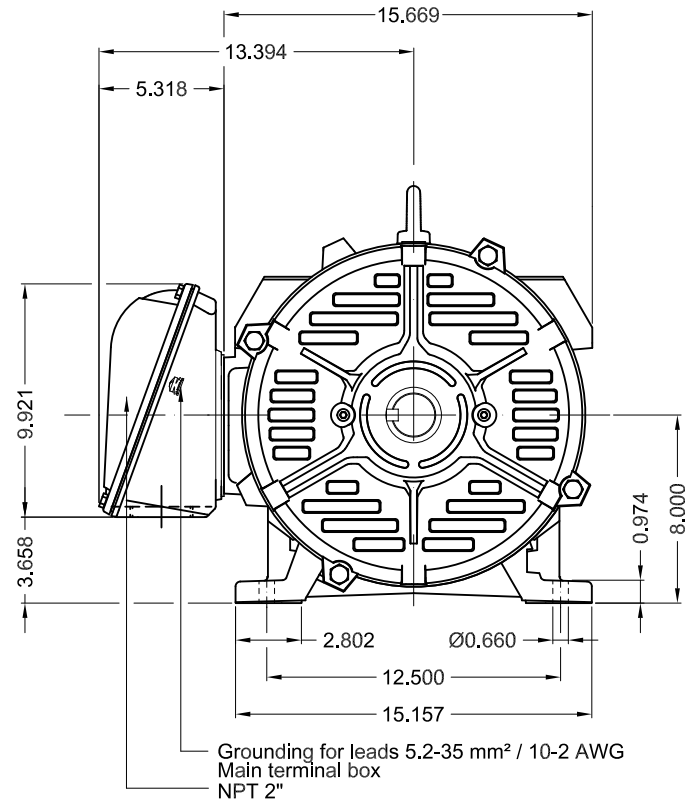


Performance : 575 V 60 Hz 2P

Rated current : 56.8 A
 LRC : 6.3
 Rated torque : 88.5 ft.lb
 Locked rotor torque : 220 %
 Breakdown torque : 229 %
 Rated speed : 3560 rpm

Moment of inertia (J) : 3.82 sq.ft.lb
 Duty cycle : Cont.(S1)
 Insulation class : F
 Service factor : 1.25
 Temperature rise : 80 K
 Design : B

Rev.	Changes Summary	Performed	Checked	Date
Performed by			Page 6 / 6	Revision
Checked by				
Date	13/04/2022			



Color RAL 5009
Painting plan 203A
Mounting NEMA F-1
Mounting B3R(D)

60 HP 02 Poles 60 Hz A

1:8

ECM	LOC	SUMMARY OF MODIFICATIONS	EXECUTED	CHECKED	RELEASED	DATE	VER
EXECUTED	PIRWBUSER	THREE PH. MOTOR W40 PREM. EFF.					
CHECKED		FRAME 324/6TS IP23 ODP					
RELEASED							
REL DT.	WMO	Jaragua do Sul	Product Engineering	SHEET	1 / 1		

PREVIEW
WDD



WEG **W40 NEMA**
CC029A Premium
Inverter Duty Motor



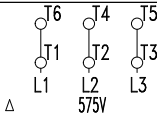
IEC 60034-1
 MOD.T01#FOXON



For use on PWM, VT 1000:1, CT 3:1, 1.0SF

DP060502NPW40
 MADE IN BRAZIL
 14497528

PH 3	FR 324/6TS	HP(kW) 60(45)		Hz 60
V 575		A 56.8		IP23
NEMA NOM EFF		93.6	%	RPM 3560
ENCL ODP	DUTY CONT.		INS. CL. F Δ T 80 K	
PF 0.85		DES B	CODE G	AMB. 40°C
SF 1.25	SFA 71.0		ALT 1000 m.a.s.l.	



→ 6312-Z-C3
 → 6211-Z-C3

MOBIL POLYREX EM
 21 g 19658 h

461 Lbs