



# TORQUE AND CURRENT VS SPEED CURVE

Three Phase Induction Motor - Squirrel Cage



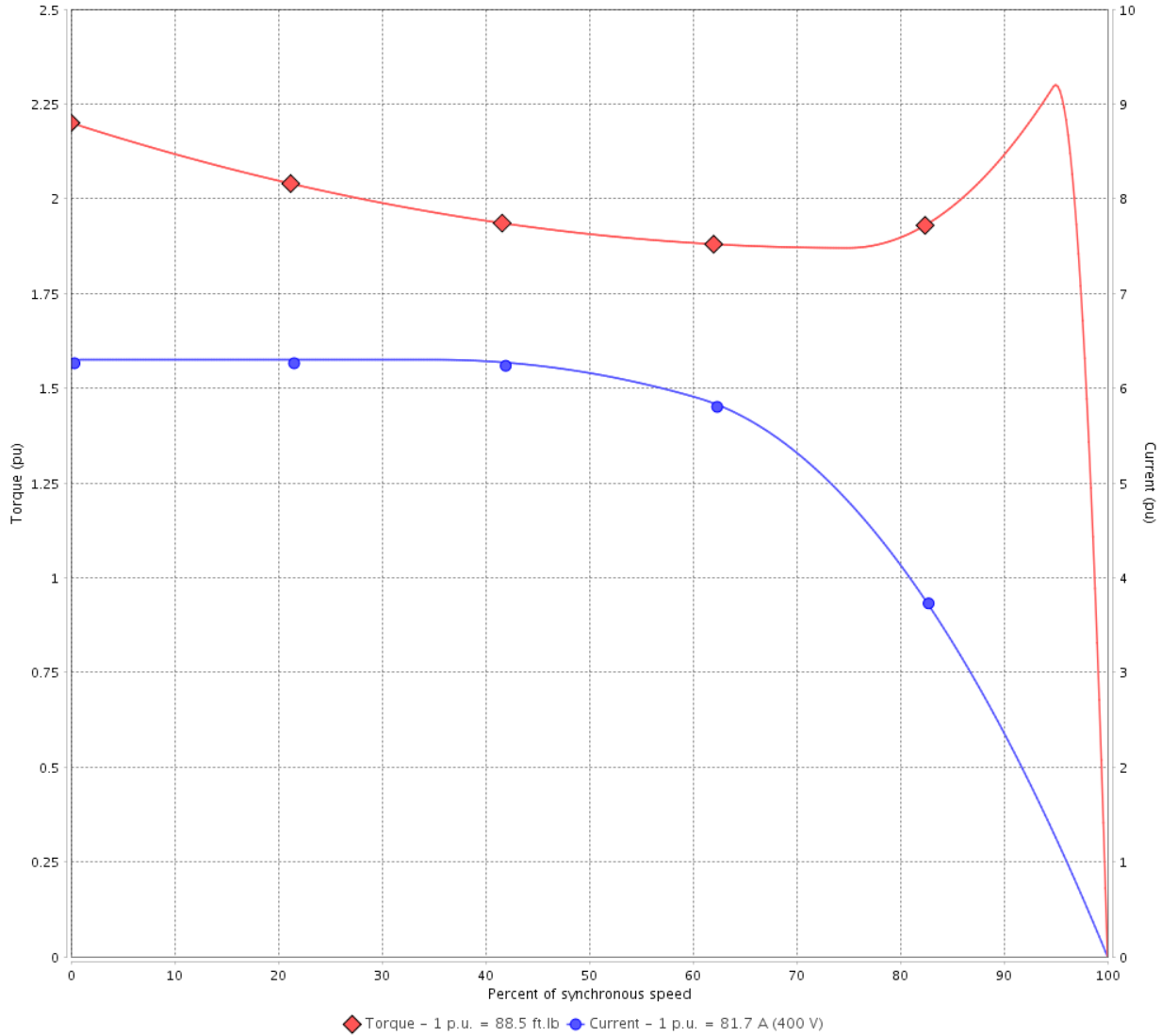
Customer :

Product line : W40 NEMA Premium Efficiency  
Three-Phase

Product code : 14497531

Catalog # : 06036OT3V326TS-W40

TORQUE AND CURRENT VS SPEED CURVE



Performance : 200/400 V 60 Hz 2P

Rated current	: 163/81.7 A	Moment of inertia (J)	: 3.82 sq.ft.lb
LRC	: 6.3	Duty cycle	: Cont.(S1)
Rated torque	: 88.5 ft.lb	Insulation class	: F
Locked rotor torque	: 220 %	Service factor	: 1.25
Breakdown torque	: 229 %	Temperature rise	: 80 K
Rated speed	: 3560 rpm	Design	: B

Locked rotor time : 27s (cold) 15s (hot)

Rev.	Changes Summary	Performed	Checked	Date
Performed by			Page 2 / 6	Revision
Checked by				
Date	13/04/2022			

# LOAD PERFORMANCE CURVE

## Three Phase Induction Motor - Squirrel Cage

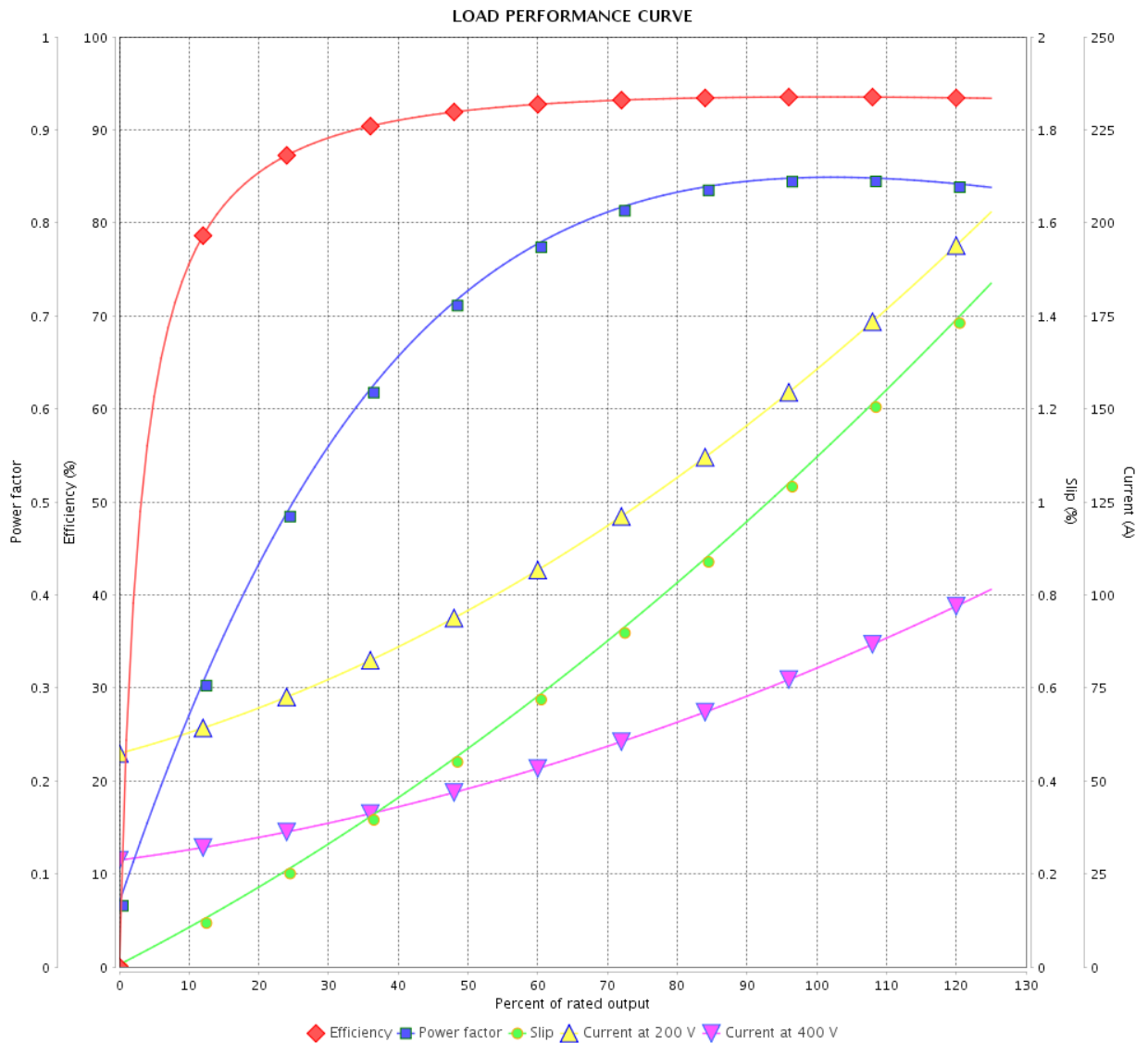


Customer :

Product line : W40 NEMA Premium Efficiency  
Three-Phase

Product code : 14497531

Catalog # : 06036OT3V326TS-W40



Performance : 200/400 V 60 Hz 2P

Rated current : 163/81.7 A  
 LRC : 6.3  
 Rated torque : 88.5 ft.lb  
 Locked rotor torque : 220 %  
 Breakdown torque : 229 %  
 Rated speed : 3560 rpm

Moment of inertia (J) : 3.82 sq.ft.lb  
 Duty cycle : Cont.(S1)  
 Insulation class : F  
 Service factor : 1.25  
 Temperature rise : 80 K  
 Design : B

Rev.	Changes Summary	Performed	Checked	Date
Performed by				Page 3 / 6
Checked by				
Date				

# THERMAL LIMIT CURVE



## Three Phase Induction Motor - Squirrel Cage

Customer :

Product line : W40 NEMA Premium Efficiency  
Three-Phase

Product code : 14497531

Catalog # : 06036OT3V326TS-W40

Performance : 200/400 V 60 Hz 2P

Rated current : 163/81.7 A  
LRC : 6.3  
Rated torque : 88.5 ft.lb  
Locked rotor torque : 220 %  
Breakdown torque : 229 %  
Rated speed : 3560 rpm

Moment of inertia (J) : 3.82 sq.ft.lb  
Duty cycle : Cont.(S1)  
Insulation class : F  
Service factor : 1.25  
Temperature rise : 80 K  
Design : B

Heating constant

Cooling constant

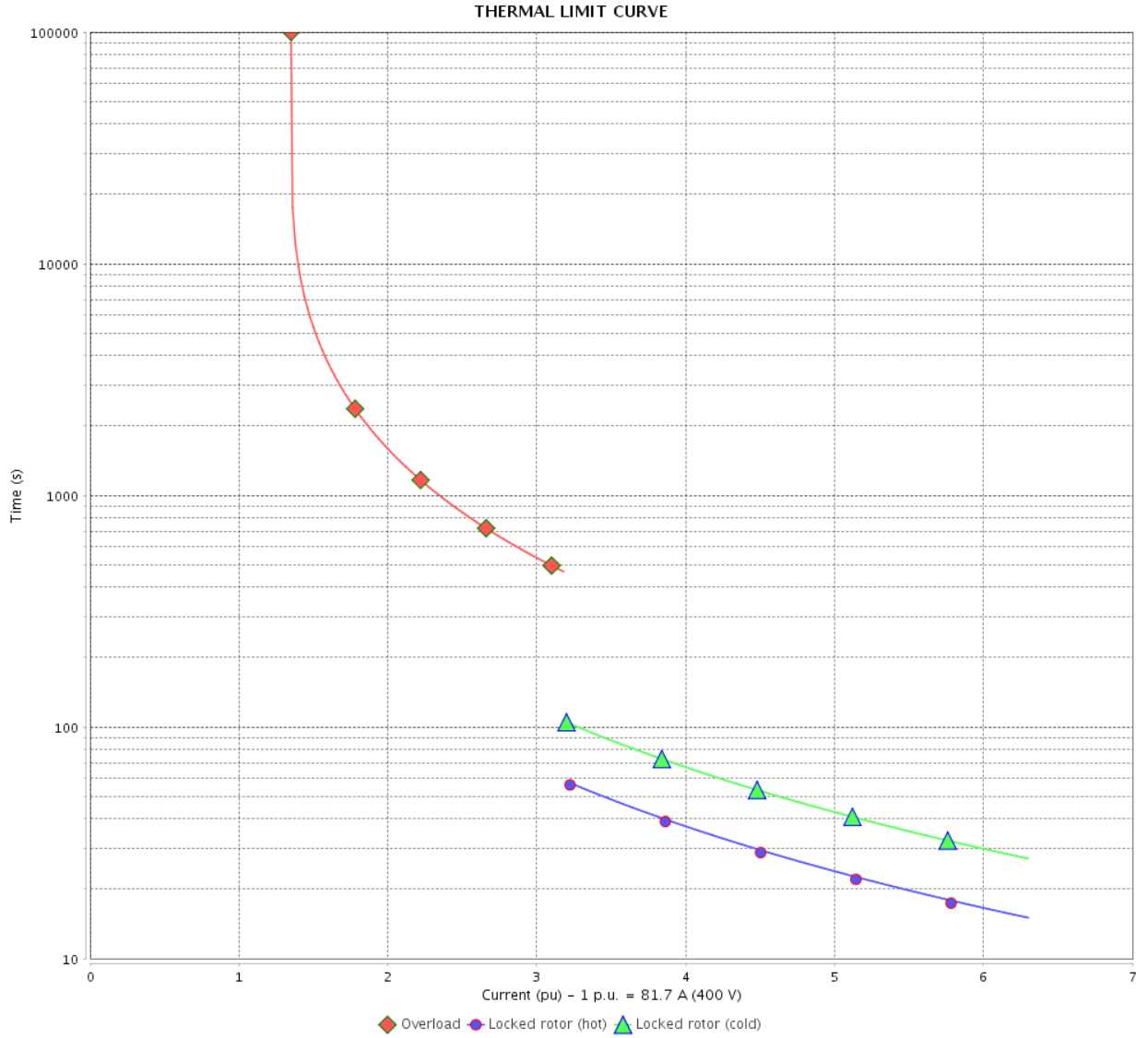
Rev.	Changes Summary	Performed	Checked	Date
Performed by				
Checked by			Page	Revision
Date	13/04/2022		4 / 6	

# THERMAL LIMIT CURVE

Three Phase Induction Motor - Squirrel Cage



Customer : \_\_\_\_\_



Rev.	Changes Summary	Performed	Checked	Date
Performed by		Page 5 / 6		Revision
Checked by				
Date				

# VFD OPERATION CURVE

Three Phase Induction Motor - Squirrel Cage



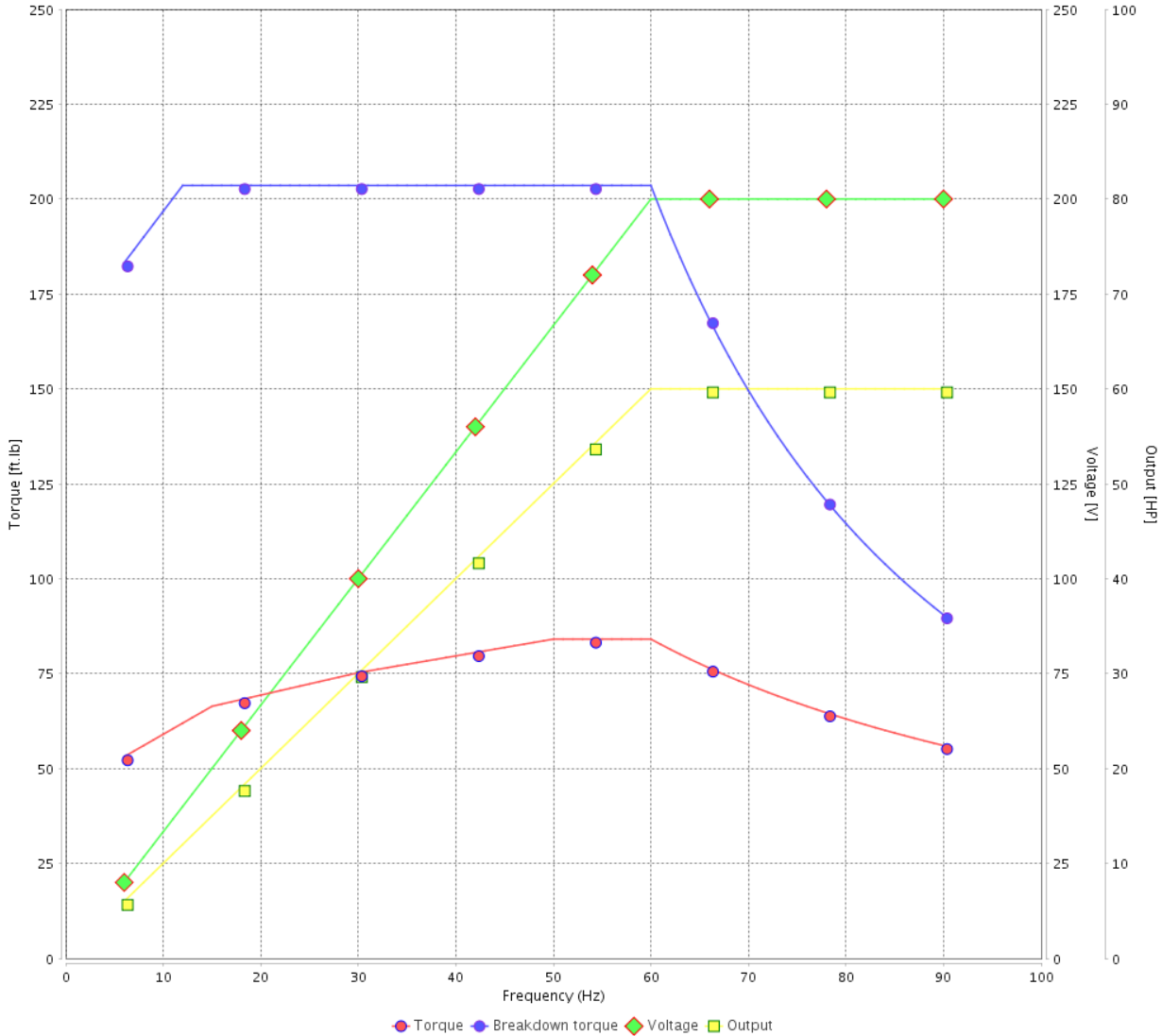
Customer :

Product line : W40 NEMA Premium Efficiency Three-Phase

Product code : 14497531

Catalog # : 06036OT3V326TS-W40

VFD OPERATION CURVE

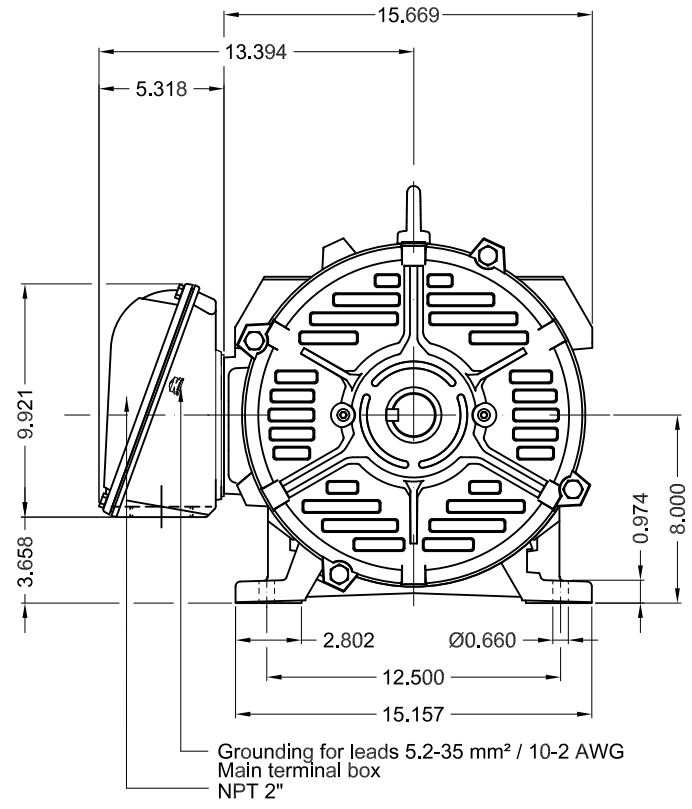


Performance : 200/400 V 60 Hz 2P

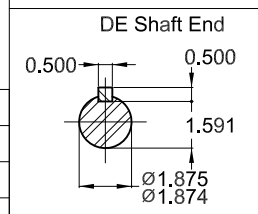
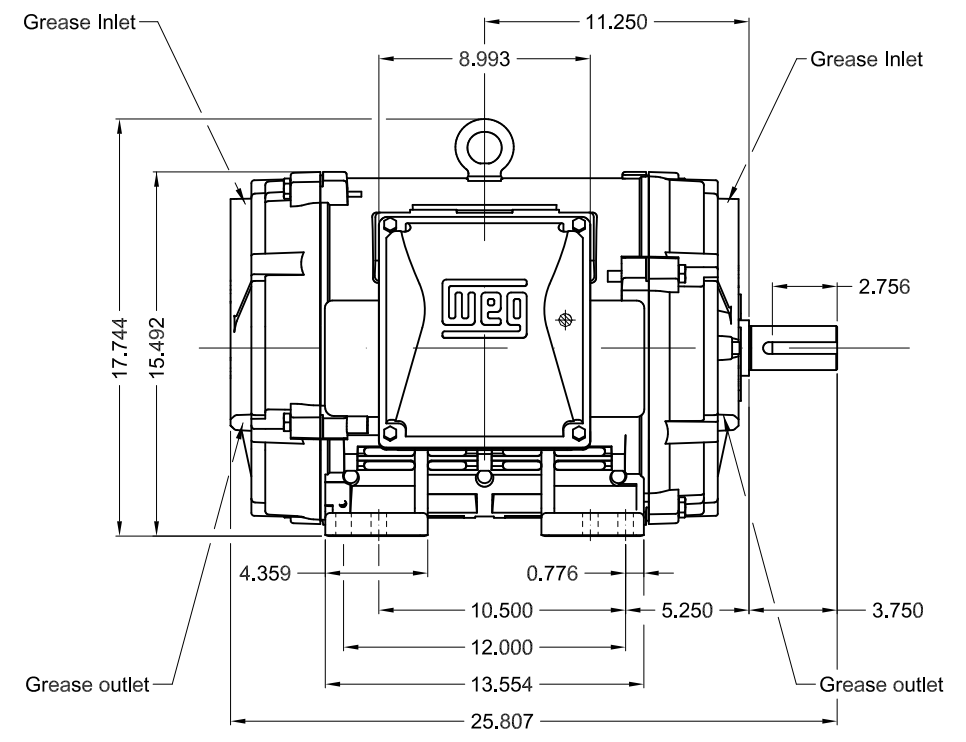
Rated current : 163/81.7 A  
 LRC : 6.3  
 Rated torque : 88.5 ft.lb  
 Locked rotor torque : 220 %  
 Breakdown torque : 229 %  
 Rated speed : 3560 rpm

Moment of inertia (J) : 3.82 sq.ft.lb  
 Duty cycle : Cont.(S1)  
 Insulation class : F  
 Service factor : 1.25  
 Temperature rise : 80 K  
 Design : B

Rev.	Changes Summary	Performed	Checked	Date
Performed by			Page 6 / 6	Revision
Checked by				
Date	13/04/2022			



Grounding for leads 5.2-35 mm<sup>2</sup> / 10-2 AWG  
Main terminal box  
NPT 2"



Color RAL 5009  
Painting plan 203A  
Mounting NEMA F-1  
Mounting B3R(D)

60 HP 02 Poles 60 Hz A

1:8

ECM	LOC	SUMMARY OF MODIFICATIONS	EXECUTED	CHECKED	RELEASED	DATE	VER
EXECUTED	PIRWBUSER	THREE PH. MOTOR W40 PREM. EFF.					
CHECKED		FRAME 324/6TS IP23 ODP					
RELEASED							
REL DT.	WMO	Jaragua do Sul	Product Engineering	SHEET	1 / 1		

**PREVIEW**  
WDD



MODEL 060360T3V326TS-W40  
MADE IN BRAZIL  
14497531

**WEG** **W40 NEMA**  
**CC029A Premium**  
Inverter Duty Motor

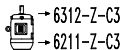
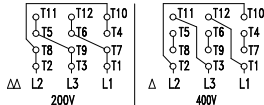


IEC 60034-1  
MOD.T01#FOXON



For use on PWM, VT 1000:1, CT 3:1, 1.0SF

PH 3	FR 324/6TS	HP(kW) 60.0(45.0)		Hz 60
V 200/400		A 163/81.7		IP23
NEMA NOM EFF		93.6	%	RPM 3560
ENCL ODP	DUTY CONT.		INS. CL. F $\Delta$ T 80 K	
PF 0.85		DES B	CODE G	AMB. 40°C
SF 1.25	SFA 204/102		ALT 1000 m.a.s.l.	



MOBIL POLYREX EM  
21 g 19658 h

474 Lbs