

DATA SHEET



Three Phase Induction Motor - Squirrel Cage

Customer :																			
Product line	: NEMA Premium Efficiency Three-Phase																		
Product code :	13503282																		
Catalog # :	07509ET3GKD444T-W22																		
Frame : 444/5T Output : 75 HP (55 kW) Poles : 8 Frequency : 60 Hz Rated voltage : 460 V Rated current : 93.0 A L. R. Amperes : 558 A LRC : 6.0x(Code G) No load current : 40.0 A Rated speed : 890 rpm Slip : 1.11 % Rated torque : 443 ft.lb Locked rotor torque : 180 % Breakdown torque : 210 % Insulation class : F Service factor : 1.25 Design : A	Locked rotor time : 32s (cold) 18s (hot) Temperature rise : 80 K Duty cycle : Cont.(S1) Ambient temperature : -20°C to +40°C Altitude : 1000 m.a.s.l. Protection degree : IP55 Cooling method : IC411 - TEFC Mounting : F-1 Rotation ¹ : Both (CW and CCW) Noise level ² : 63.0 dB(A) Starting method : Direct On Line Approx. weight ³ : 1444 lb																		
Output	25% 50% 75% 100%																		
Efficiency (%)	0.000 93.0 93.6 93.6																		
Power Factor	0.00 0.64 0.74 0.79																		
Foundation loads																			
Max. traction	: 1755 lb																		
Max. compression	: 3199 lb																		
	<table border="0"> <tr> <td></td> <td style="text-align: center;"><u>Drive end</u></td> <td style="text-align: center;"><u>Non drive end</u></td> </tr> <tr> <td>Bearing type :</td> <td>NU-319 C3</td> <td>6316 C3</td> </tr> <tr> <td>Sealing :</td> <td>WSeal</td> <td>WSeal</td> </tr> <tr> <td>Lubrication interval :</td> <td>15000 h</td> <td>20000 h</td> </tr> <tr> <td>Lubricant amount :</td> <td>45 g</td> <td>34 g</td> </tr> <tr> <td>Lubricant type :</td> <td colspan="2" style="text-align: center;">Mobil Polyrex EM</td> </tr> </table>		<u>Drive end</u>	<u>Non drive end</u>	Bearing type :	NU-319 C3	6316 C3	Sealing :	WSeal	WSeal	Lubrication interval :	15000 h	20000 h	Lubricant amount :	45 g	34 g	Lubricant type :	Mobil Polyrex EM	
	<u>Drive end</u>	<u>Non drive end</u>																	
Bearing type :	NU-319 C3	6316 C3																	
Sealing :	WSeal	WSeal																	
Lubrication interval :	15000 h	20000 h																	
Lubricant amount :	45 g	34 g																	
Lubricant type :	Mobil Polyrex EM																		
Notes																			
This revision replaces and cancel the previous one, which must be eliminated. (1) Looking the motor from the shaft end. (2) Measured at 1m and with tolerance of +3dB(A). (3) Approximate weight subject to changes after manufacturing process. (4) At 100% of full load.																			
These are average values based on tests with sinusoidal power supply, subject to the tolerances stipulated in NEMA MG-1.																			
Rev.	Changes Summary	Performed	Checked	Date															
Performed by																			
Checked by			Page	Revision															
Date	13/04/2022		1 / 6																

TORQUE AND CURRENT VS SPEED CURVE

Three Phase Induction Motor - Squirrel Cage



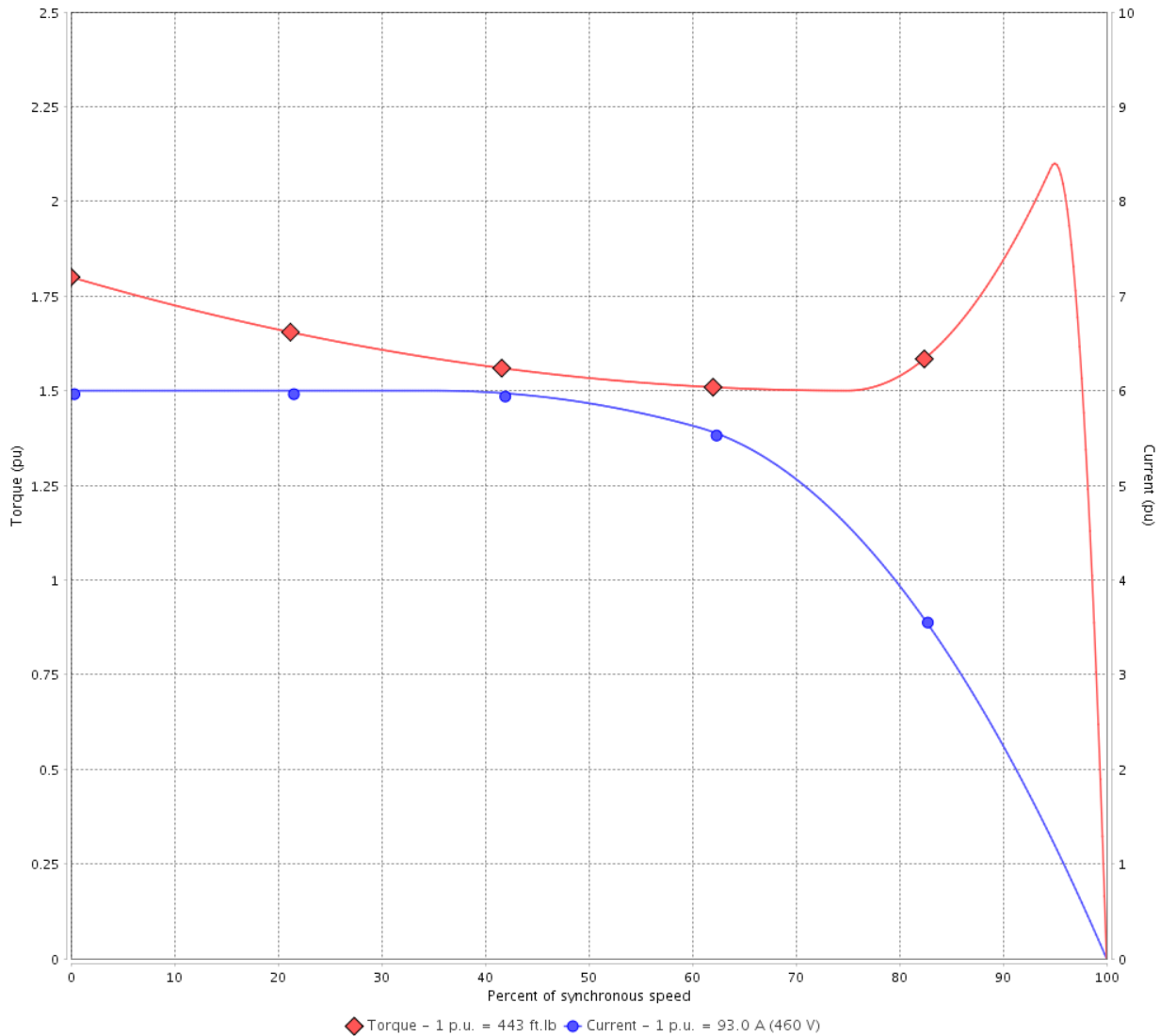
Customer :

Product line : NEMA Premium Efficiency Three-Phase

Product code : 13503282

Catalog # : 07509ET3GKD444T-W22

TORQUE AND CURRENT VS SPEED CURVE



Performance : 460 V 60 Hz 8P

Rated current	: 93.0 A	Moment of inertia (J)	
LRC	: 6.0	Duty cycle	: Cont.(S1)
Rated torque	: 443 ft.lb	Insulation class	: F
Locked rotor torque	: 180 %	Service factor	: 1.25
Breakdown torque	: 210 %	Temperature rise	: 80 K
Rated speed	: 890 rpm	Design	: A

Locked rotor time : 32s (cold) 18s (hot)

Rev.	Changes Summary	Performed	Checked	Date
Performed by			Page 2 / 6	Revision
Checked by				
Date	13/04/2022			

LOAD PERFORMANCE CURVE

Three Phase Induction Motor - Squirrel Cage

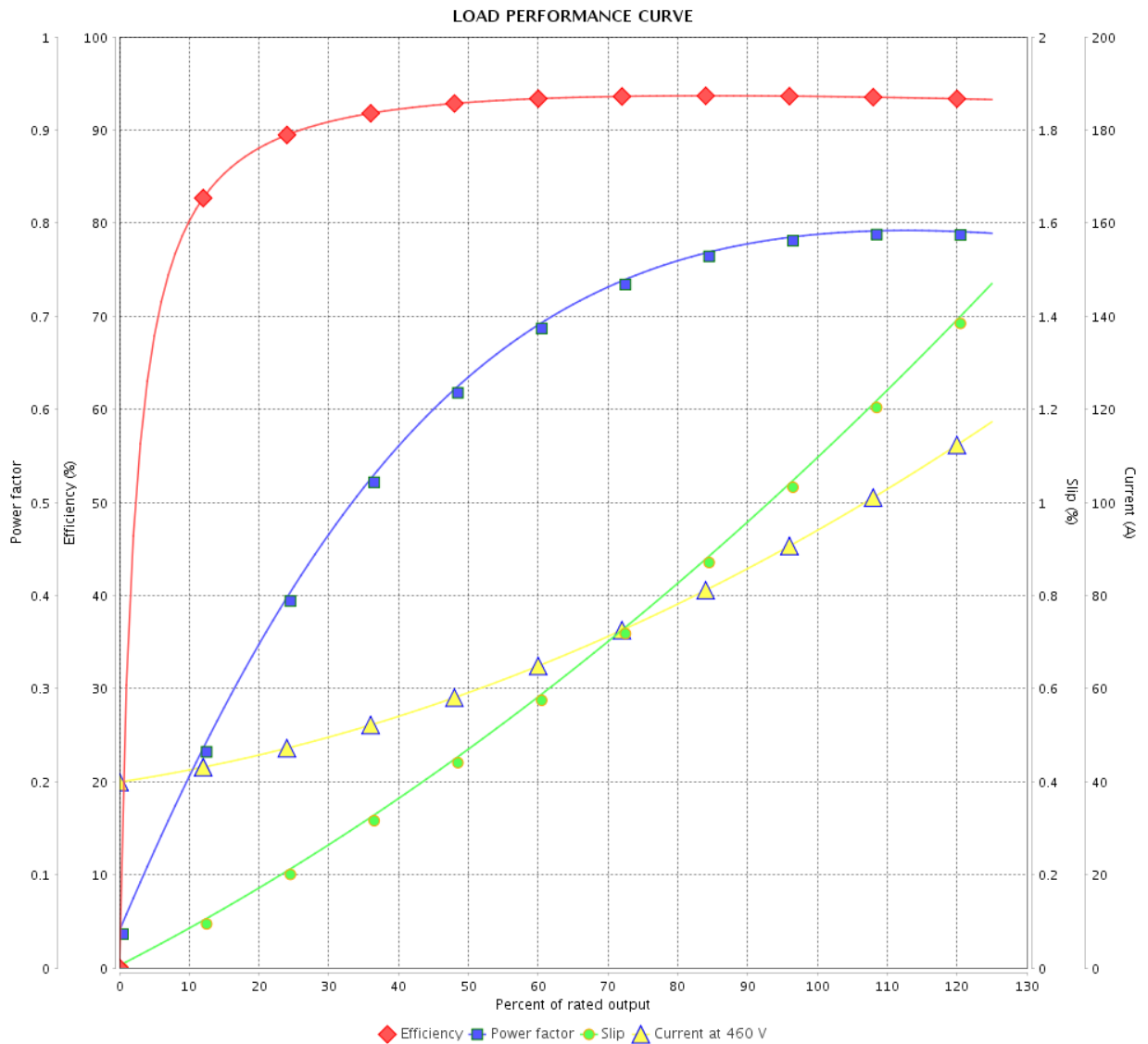


Customer :

Product line : NEMA Premium Efficiency Three-Phase

Product code : 13503282

Catalog # : 07509ET3GKD444T-W22



Performance : 460 V 60 Hz 8P

Rated current : 93.0 A
 LRC : 6.0
 Rated torque : 443 ft.lb
 Locked rotor torque : 180 %
 Breakdown torque : 210 %
 Rated speed : 890 rpm

Moment of inertia (J)
 Duty cycle : Cont.(S1)
 Insulation class : F
 Service factor : 1.25
 Temperature rise : 80 K
 Design : A

Rev.	Changes Summary	Performed	Checked	Date
Performed by		Page		Revision
Checked by		3 / 6		
Date		13/04/2022		

THERMAL LIMIT CURVE



Three Phase Induction Motor - Squirrel Cage

Customer :

Product line : NEMA Premium Efficiency Three-Phase
Product code : 13503282
Catalog # : 07509ET3GKD444T-W22

Performance : 460 V 60 Hz 8P

Rated current	: 93.0 A	Moment of inertia (J)	
LRC	: 6.0	Duty cycle	: Cont.(S1)
Rated torque	: 443 ft.lb	Insulation class	: F
Locked rotor torque	: 180 %	Service factor	: 1.25
Breakdown torque	: 210 %	Temperature rise	: 80 K
Rated speed	: 890 rpm	Design	: A

Heating constant

Cooling constant

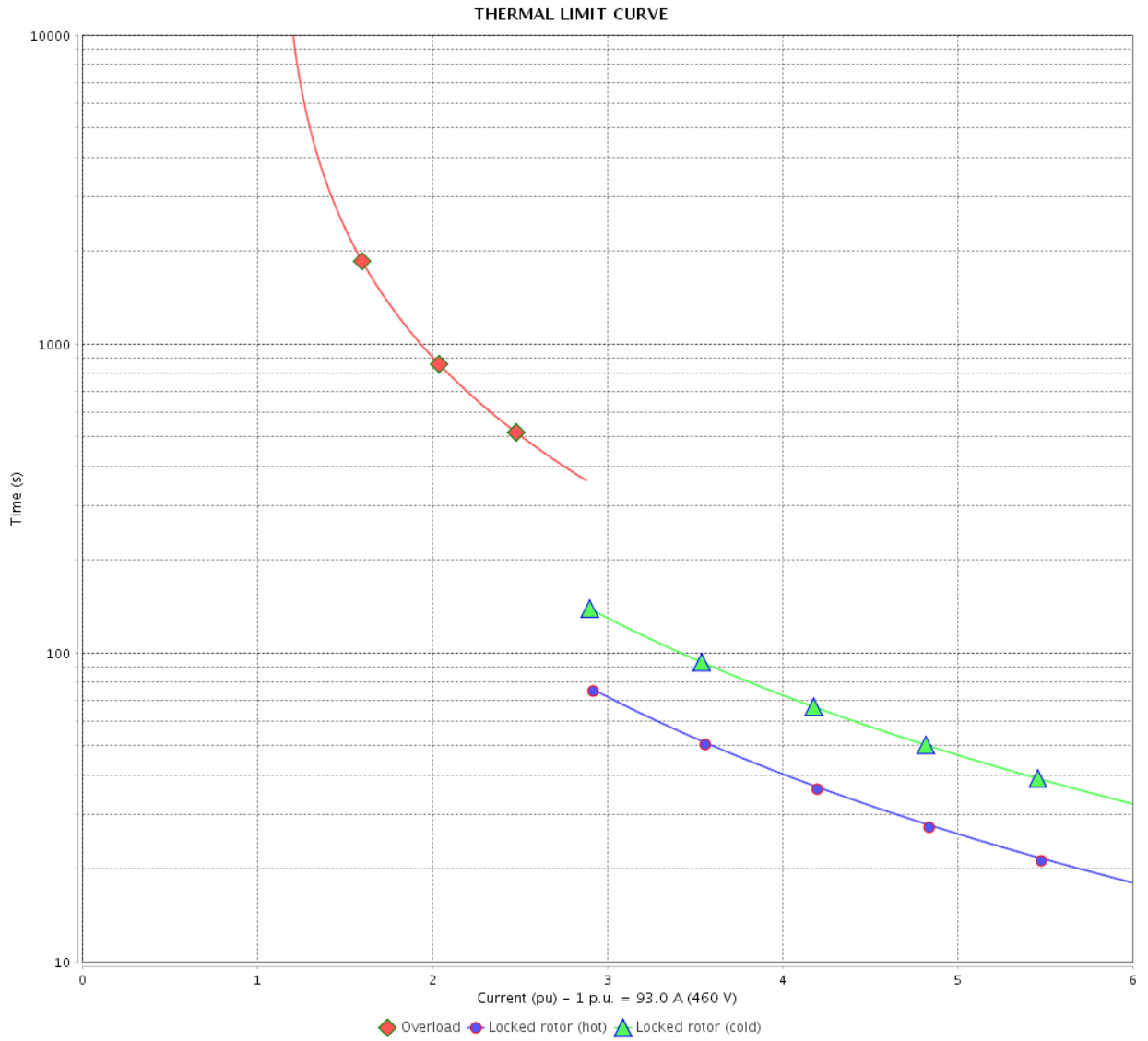
Rev.	Changes Summary	Performed	Checked	Date
Performed by				
Checked by			Page	Revision
Date	13/04/2022		4 / 6	

THERMAL LIMIT CURVE

Three Phase Induction Motor - Squirrel Cage



Customer : _____



Rev.	Changes Summary	Performed	Checked	Date
Performed by		Page 5 / 6		Revision
Checked by				
Date				

VFD OPERATION CURVE

Three Phase Induction Motor - Squirrel Cage



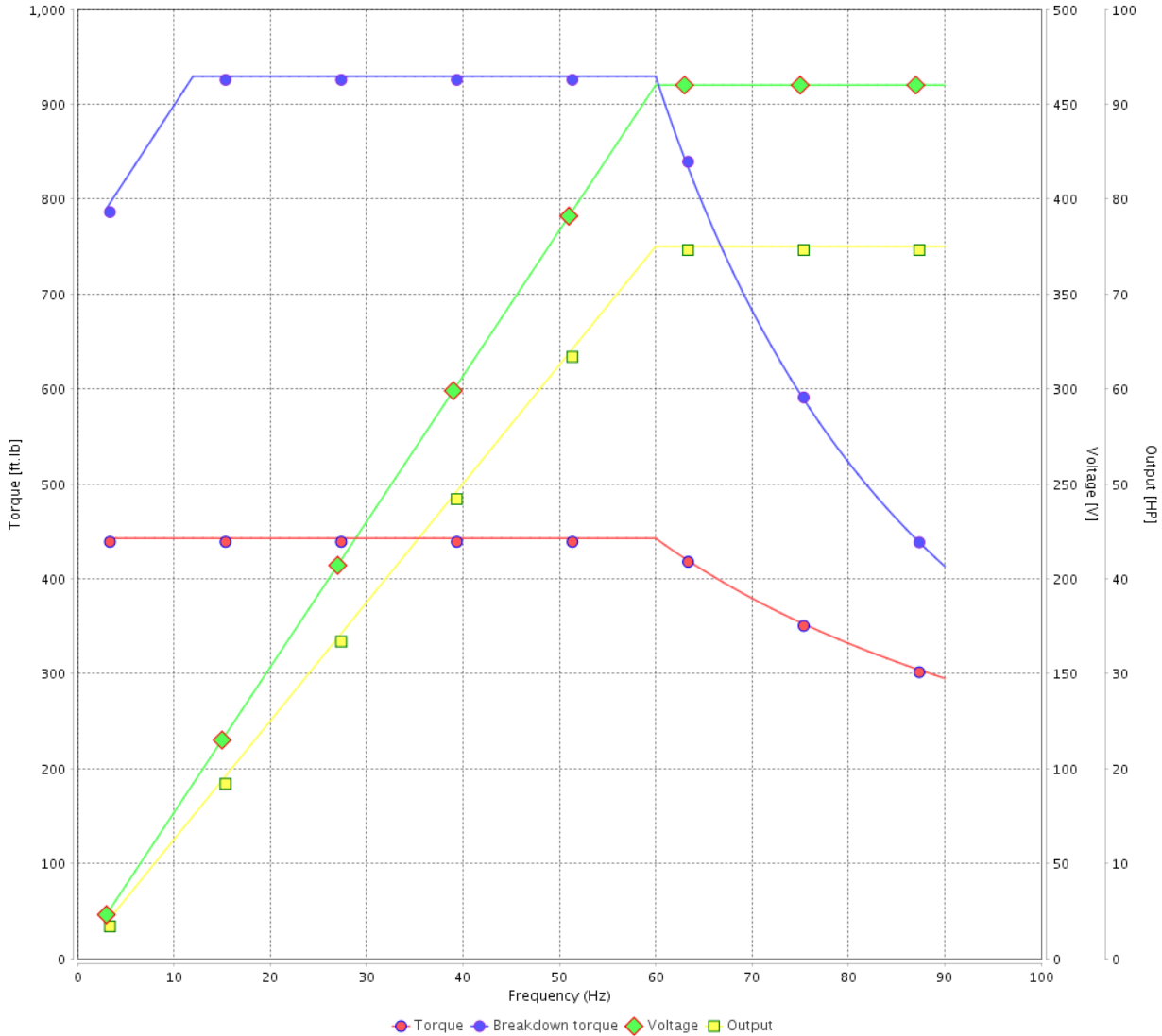
Customer :

Product line : NEMA Premium Efficiency Three-Phase

Product code : 13503282

Catalog # : 07509ET3GKD444T-W22

VFD OPERATION CURVE



Performance : 460 V 60 Hz 8P

Rated current : 93.0 A
 LRC : 6.0
 Rated torque : 443 ft.lb
 Locked rotor torque : 180 %
 Breakdown torque : 210 %
 Rated speed : 890 rpm

Moment of inertia (J)
 Duty cycle : Cont.(S1)
 Insulation class : F
 Service factor : 1.25
 Temperature rise : 80 K
 Design : A

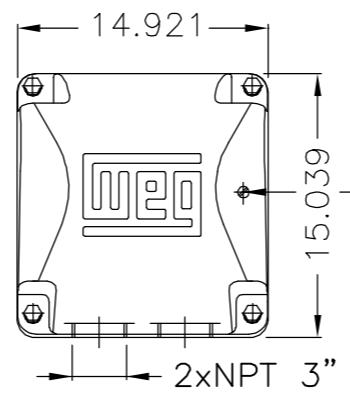
Rev.	Changes Summary	Performed	Checked	Date
Performed by			Page	Revision
Checked by				
Date				

EIXO/SHAFT	
PADRÃO/STANDARD	X
OPCIONAL/OPTIONAL	
ESPECIAL/SPECIAL	

Dimensões em polegada
Dimensions in inches

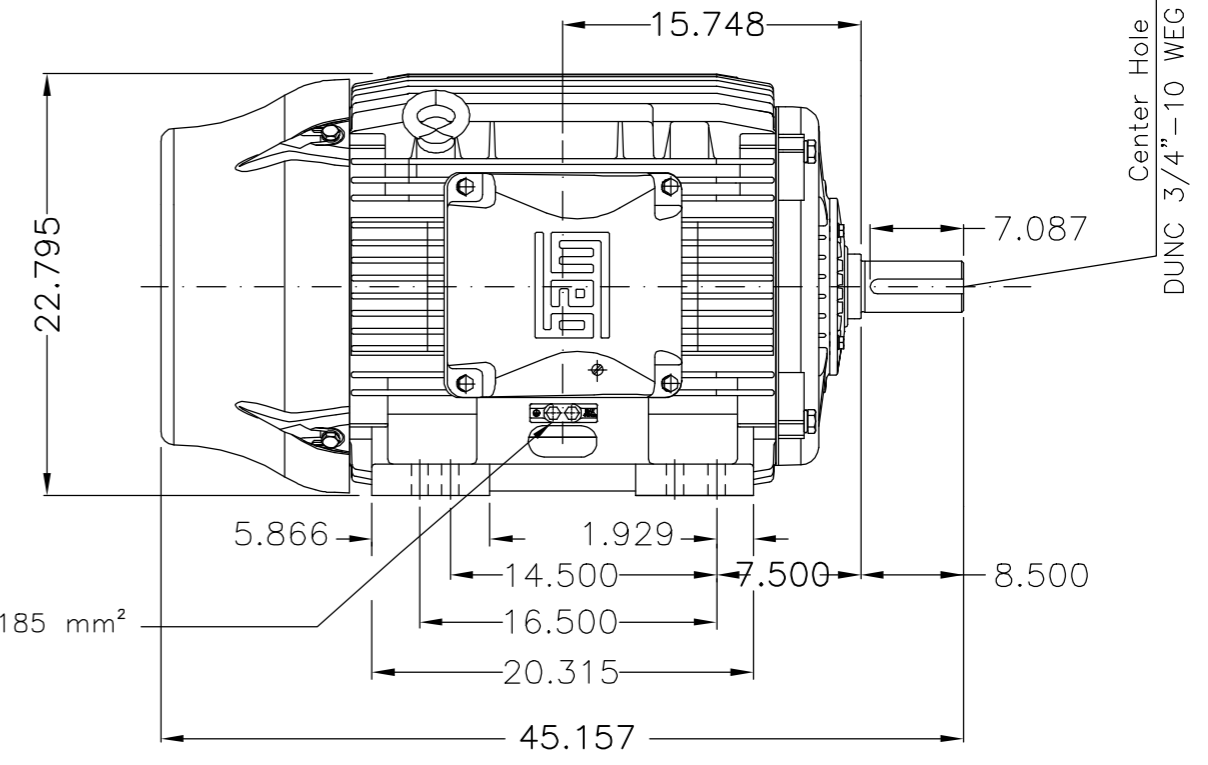
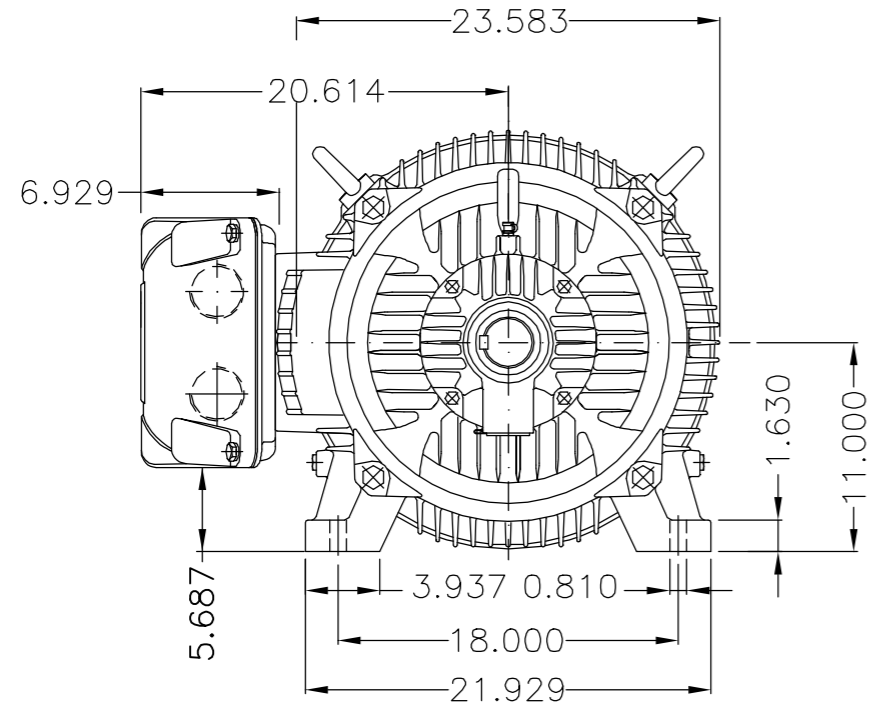
CERTIFIED WEG MOTORES
Certified document.
Not subject to changes.

THIS IS AN UPDATED REVISION, THE PREVIOUS ONE MUST BE DISREGARDED.



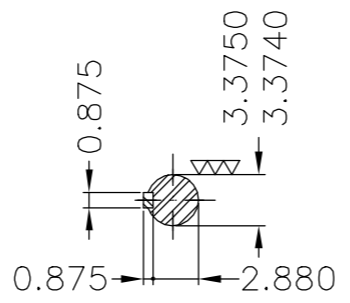
Main terminal box

Grounding for leads 35-70 mm²



Grounding for leads 25-185 mm²

Center Hole
DUNC 3/4"-10 WEG TBG12



DE Shaft End

Caixa de ligação da carcaça 504/5T / Terminal box from frame 504/5T						
Base intermediária / Intermediate base						
Placa de bornes com 12 pinos / Terminal block with 12 terminals						
Categoria A / Design A						
Saída dos cabos voltada para a traseira / Cables outlet directed to NDE						
Dispositivo de travamento de eixo / Shaft locking device						
Rolamento dianteiro de rolos / DE roller bearing						
Cor RAL 5009 / Color RAL 5009						
Plano de pintura 203A / Painting plan 203A						
Forma construtiva NEMA F-1 / Mounting NEMA F-1						
Forma construtiva B3D / Mounting B3R(D)						

WEG ELECTRIC CORPORATION - WEG

500001133616		DOCUMENTO NOVO	DVEGINI	ADRIANAP	27.01.2016	00
ECM	LOC	SUMMARY OF MODIFICATIONS	EXECUTED	CHECKED	RELEASED	DATE VER
EXECUTED	DVEGINI	THREE PHASE W22 MOTOR - NEMA PREMIUM EFF FRAME 444/5T IP55	10004044774			
CHECKED			000	00		
RELEASED	ADRIANAP					
REL DT	27.01.2016		WMO	Jaraguá do Sul		

75 HP 08 Poles 60Hz 414154626/0 MEC

UNCONTROLLED COPY RELEASED ZME A3