

# DATA SHEET

## Three Phase Induction Motor - Squirrel Cage



Customer :				
Product line	: NEMA Premium Efficiency Three-Phase			
Product code :	12693676			
Catalog # :	07518ET3E365T-W22G			
Frame	: 364/5T			
Insulation class	: F			
Duty cycle	: Cont.(S1)			
Ambient temperature	: -20°C to +40°C			
Altitude	: 1000 m.a.s.l.			
Protection degree	: IP55			
Design	: B			
Cooling method	: IC411 - TEFC			
Mounting	: F-1			
Rotation <sup>1</sup>	: Both (CW and CCW)			
Starting method	: Direct On Line			
Approx. weight <sup>2</sup>	: 939 lb			
Moment of inertia (J)				
Output [HP]	75			
Poles	4			
Frequency [Hz]	60			
Rated voltage [V]	208-230/460			
Rated current [A]	186-174/87.2			
L. R. Amperes [A]	1190-1114/558			
LRC [A]	6.4x(Code G)			
No load current [A]	56.9-66.0/33.0			
Rated speed [RPM]	1780			
Slip [%]	1.11			
Rated torque [ft.lb]	221			
Locked rotor torque [%]	240			
Breakdown torque [%]	260			
Service factor	1.25			
Temperature rise	80 K			
Locked rotor time	25s (cold) 14s (hot)			
Noise level <sup>2</sup>	67.0 dB(A)			
Efficiency (%)	25%	0.000		
	50%	94.5		
	75%	95.0		
	100%	95.4		
Power Factor	25%	0.00		
	50%	0.68		
	75%	0.78		
	100%	0.83		
Bearing type	: <u>Drive end</u> 6314 C3 <u>Non drive end</u> 6314 C3			
Sealing	: WSeal WSeal			
Lubrication interval	: 12000 h 12000 h			
Lubricant amount	: 27 g 27 g			
Lubricant type	: Mobil Polyrex EM			
Foundation loads	Max. traction : 1365 lb			
	Max. compression : 2304 lb			
Notes				
This revision replaces and cancel the previous one, which must be eliminated. (1) Looking the motor from the shaft end. (2) Measured at 1m and with tolerance of +3dB(A). (3) Approximate weight subject to changes after manufacturing process. (4) At 100% of full load.				
These are average values based on tests with sinusoidal power supply, subject to the tolerances stipulated in NEMA MG-1.				
Rev.	Changes Summary	Performed	Checked	Date
Performed by				
Checked by			Page	Revision
Date	13/04/2022		1 / 11	

# TORQUE AND CURRENT VS SPEED CURVE

Three Phase Induction Motor - Squirrel Cage



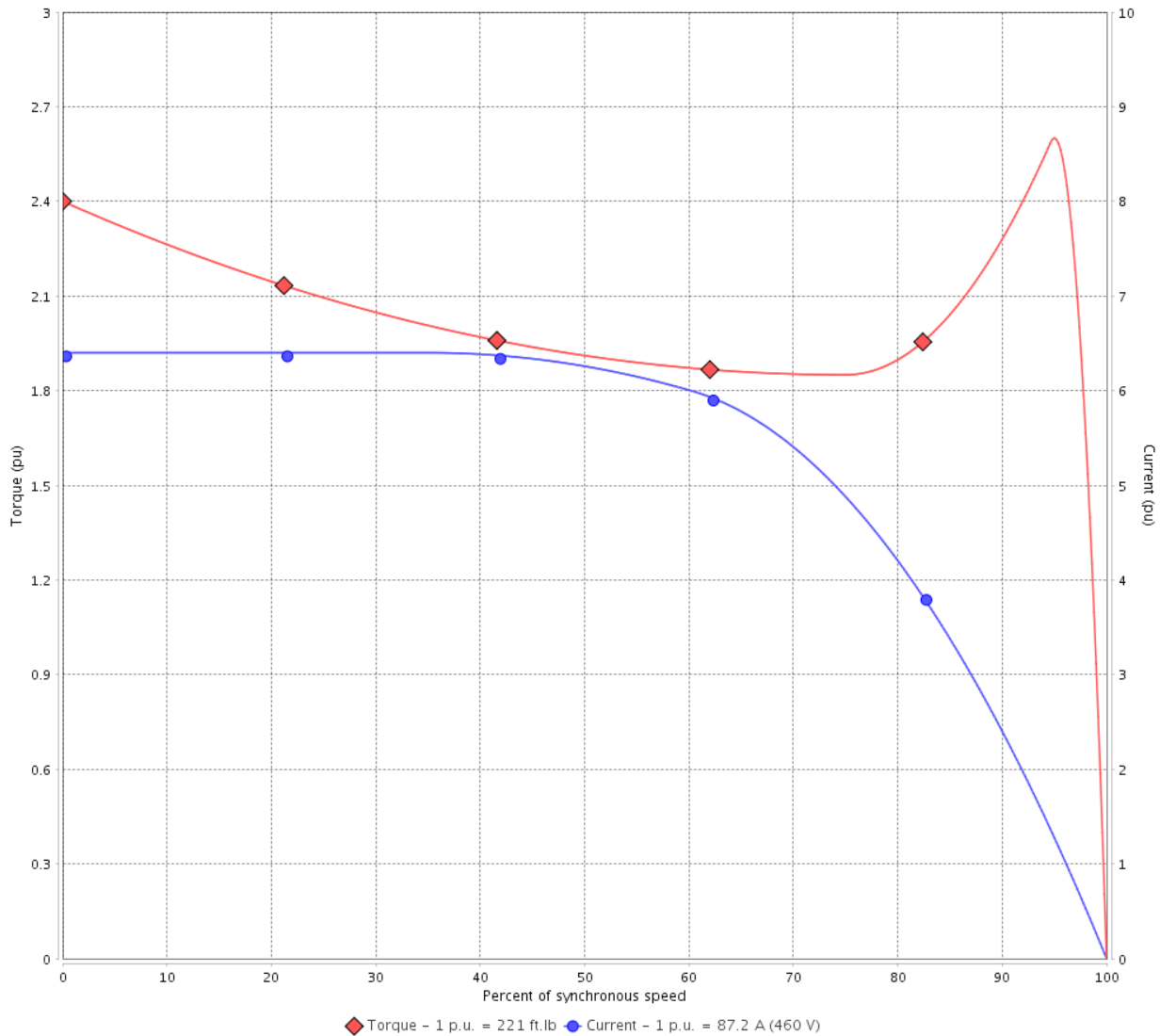
Customer :

Product line : NEMA Premium Efficiency Three-Phase

Product code : 12693676

Catalog # : 07518ET3E365T-W22G

TORQUE AND CURRENT VS SPEED CURVE



Performance : 208-230/460 V 60 Hz 4P

Rated current : 186-174/87.2 A  
 LRC : 6.4  
 Rated torque : 221 ft.lb  
 Locked rotor torque : 240 %  
 Breakdown torque : 260 %  
 Rated speed : 1780 rpm

Moment of inertia (J)  
 Duty cycle : Cont.(S1)  
 Insulation class : F  
 Service factor : 1.25  
 Temperature rise : 80 K  
 Design : B

Locked rotor time : 25s (cold) 14s (hot)

Rev.	Changes Summary	Performed	Checked	Date
Performed by			Page 2 / 11	Revision
Checked by				
Date	13/04/2022			

# TORQUE AND CURRENT VS SPEED CURVE



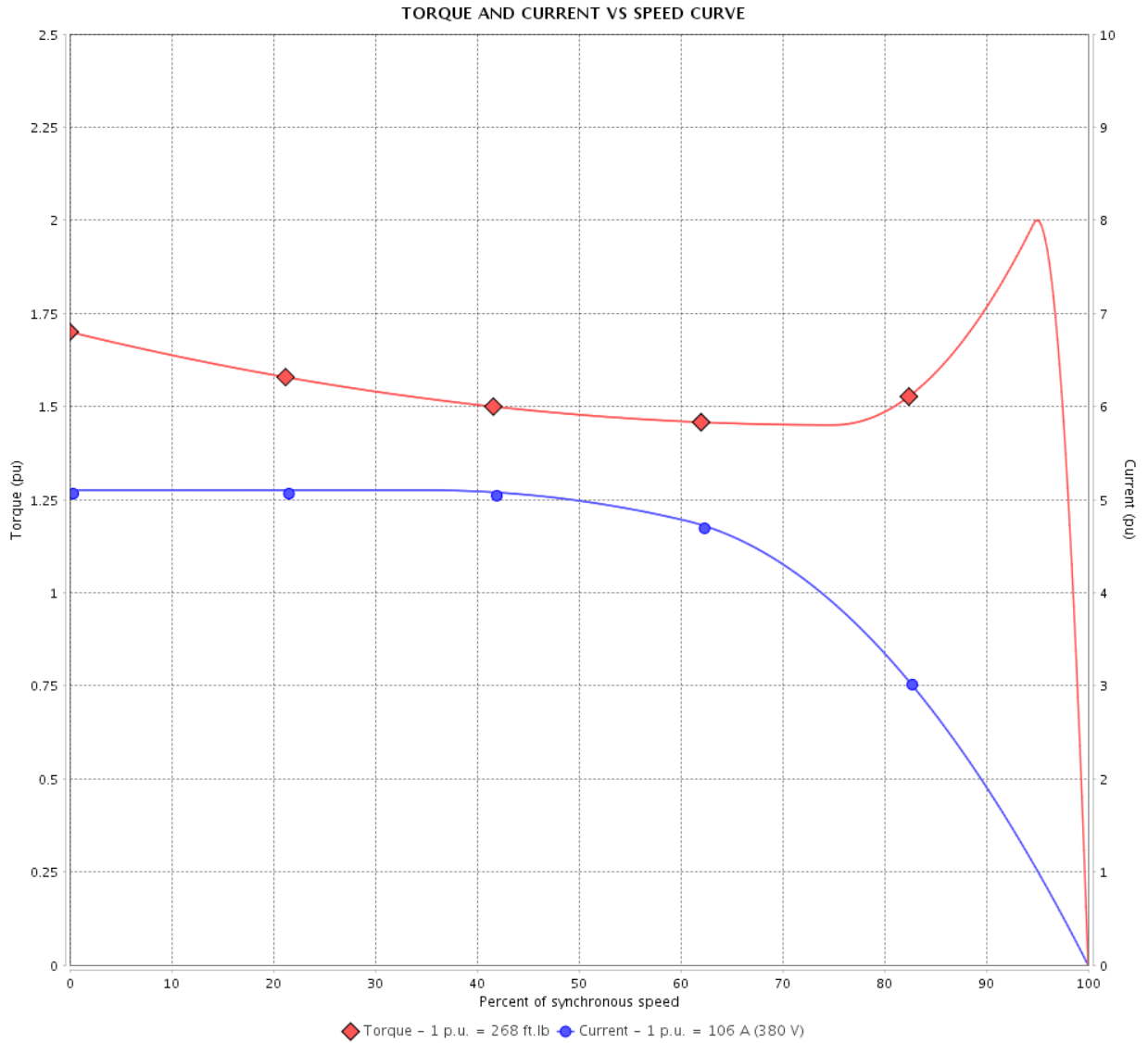
## Three Phase Induction Motor - Squirrel Cage

Customer :

Product line : NEMA Premium Efficiency Three-Phase

Product code : 12693676

Catalog # : 07518ET3E365T-W22G



Performance : 380 V 50 Hz 4P

Rated current	: 106 A	Moment of inertia (J)	
LRC	: 5.1	Duty cycle	: Cont.(S1)
Rated torque	: 268 ft.lb	Insulation class	: F
Locked rotor torque	: 170 %	Service factor	: 1.00
Breakdown torque	: 200 %	Temperature rise	: 80 K
Rated speed	: 1470 rpm	Design	: B

Locked rotor time : 18s (cold) 10s (hot)

Rev.	Changes Summary	Performed	Checked	Date
Performed by			Page 3 / 11	Revision
Checked by				
Date	13/04/2022			

# LOAD PERFORMANCE CURVE

Three Phase Induction Motor - Squirrel Cage



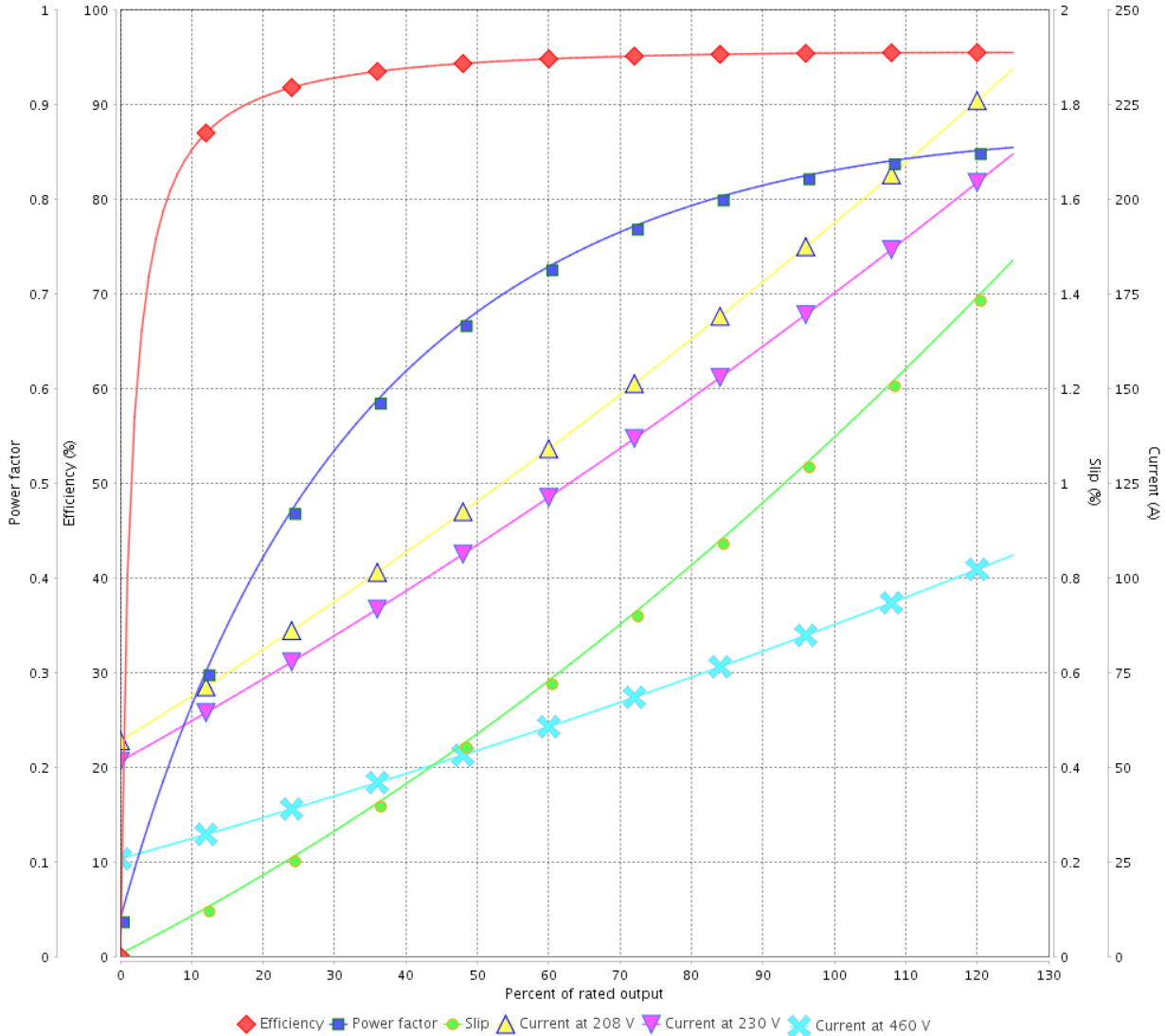
Customer :

Product line : NEMA Premium Efficiency Three-Phase

Product code : 12693676

Catalog # : 07518ET3E365T-W22G

LOAD PERFORMANCE CURVE



Performance : 208-230/460 V 60 Hz 4P

Rated current : 186-174/87.2 A  
 LRC : 6.4  
 Rated torque : 221 ft.lb  
 Locked rotor torque : 240 %  
 Breakdown torque : 260 %  
 Rated speed : 1780 rpm

Moment of inertia (J)  
 Duty cycle : Cont.(S1)  
 Insulation class : F  
 Service factor : 1.25  
 Temperature rise : 80 K  
 Design : B

Rev.	Changes Summary	Performed	Checked	Date
Performed by			Page 4 / 11	Revision
Checked by				
Date	13/04/2022			

# LOAD PERFORMANCE CURVE

## Three Phase Induction Motor - Squirrel Cage

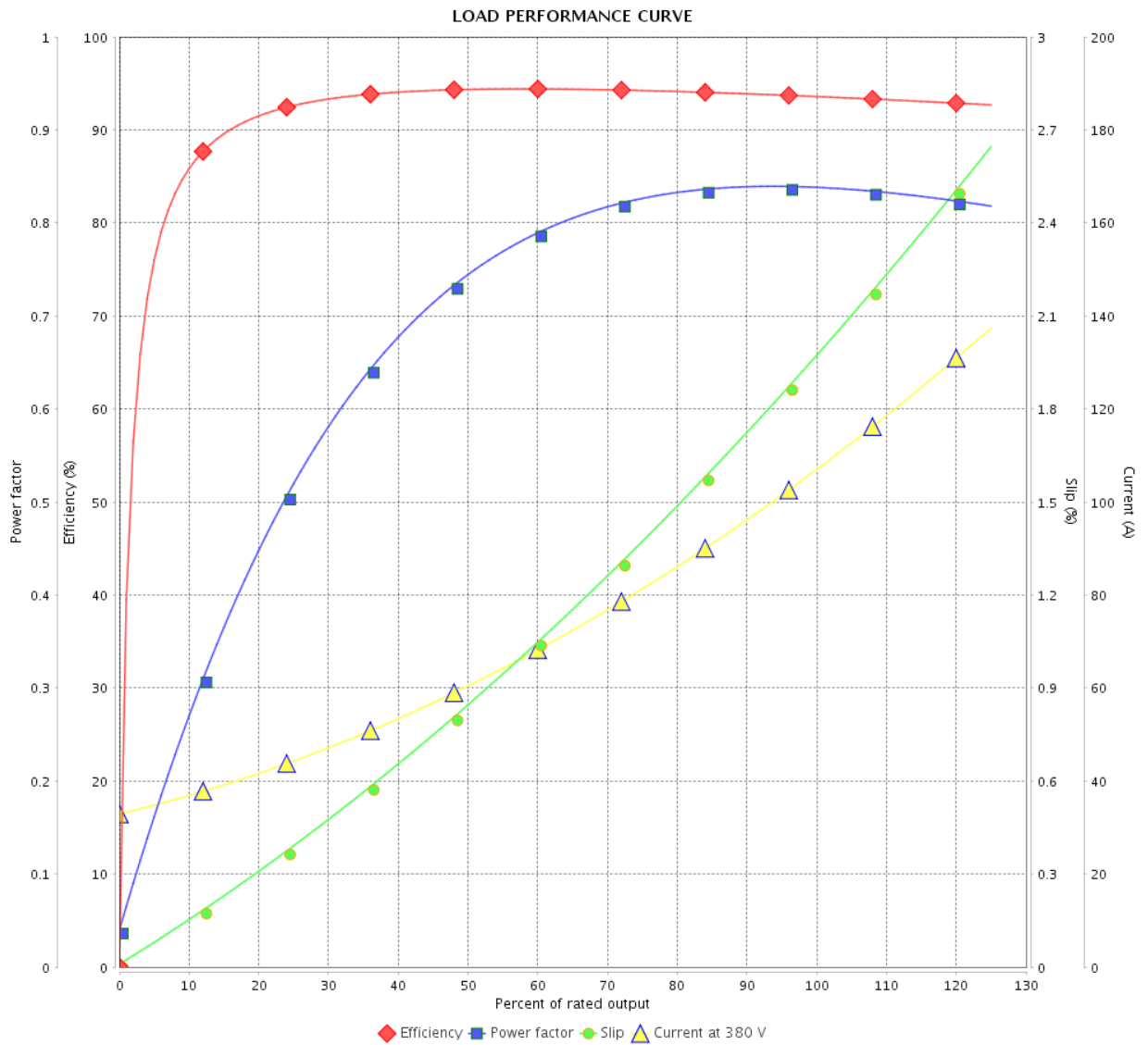


Customer :

Product line : NEMA Premium Efficiency Three-Phase

Product code : 12693676

Catalog # : 07518ET3E365T-W22G



Performance : 380 V 50 Hz 4P

Rated current : 106 A  
 LRC : 5.1  
 Rated torque : 268 ft.lb  
 Locked rotor torque : 170 %  
 Breakdown torque : 200 %  
 Rated speed : 1470 rpm

Moment of inertia (J)  
 Duty cycle : Cont.(S1)  
 Insulation class : F  
 Service factor : 1.00  
 Temperature rise : 80 K  
 Design : B

Rev.	Changes Summary	Performed	Checked	Date
Performed by			Page	Revision
Checked by			5 / 11	
Date	13/04/2022			

# THERMAL LIMIT CURVE



## Three Phase Induction Motor - Squirrel Cage

Customer :

Product line : NEMA Premium Efficiency Three-Phase  
 Product code : 12693676  
 Catalog # : 07518ET3E365T-W22G

Performance : 208-230/460 V 60 Hz 4P

Rated current : 186-174/87.2 A	Moment of inertia (J)
LRC : 6.4	Duty cycle : Cont.(S1)
Rated torque : 221 ft.lb	Insulation class : F
Locked rotor torque : 240 %	Service factor : 1.25
Breakdown torque : 260 %	Temperature rise : 80 K
Rated speed : 1780 rpm	Design : B

Heating constant

Cooling constant

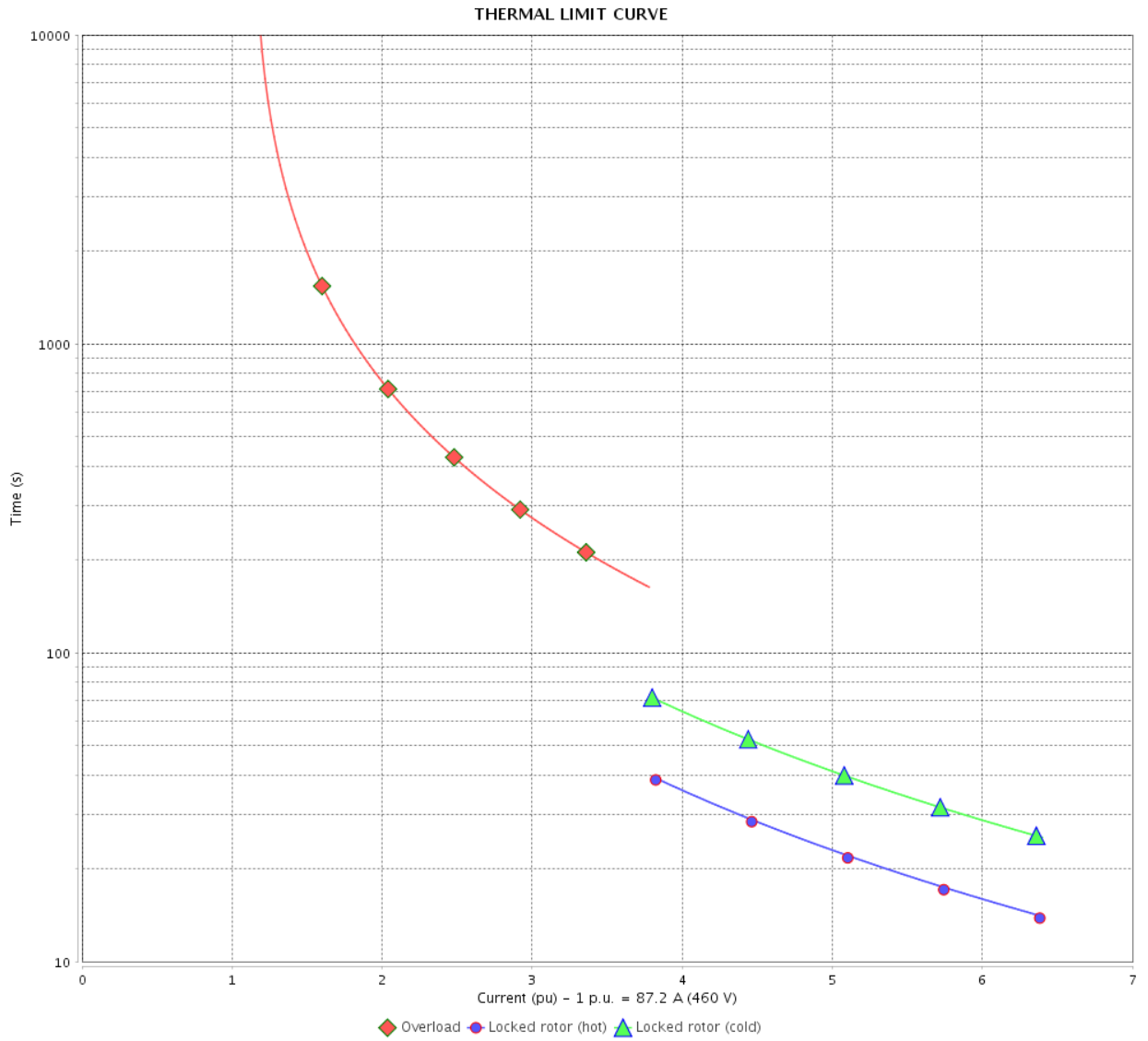
Rev.	Changes Summary	Performed	Checked	Date
Performed by			Page	Revision
Checked by				
Date				

# THERMAL LIMIT CURVE

Three Phase Induction Motor - Squirrel Cage



Customer : \_\_\_\_\_



Rev.	Changes Summary	Performed	Checked	Date
Performed by		Page		Revision
Checked by		7 / 11		
Date		13/04/2022		

# THERMAL LIMIT CURVE

## Three Phase Induction Motor - Squirrel Cage



Customer :

Product line : NEMA Premium Efficiency Three-Phase

Product code : 12693676

Catalog # : 07518ET3E365T-W22G

Performance : 380 V 50 Hz 4P

Rated current : 106 A  
LRC : 5.1  
Rated torque : 268 ft.lb  
Locked rotor torque : 170 %  
Breakdown torque : 200 %  
Rated speed : 1470 rpm

Moment of inertia (J)  
Duty cycle : Cont.(S1)  
Insulation class : F  
Service factor : 1.00  
Temperature rise : 80 K  
Design : B

Heating constant

Cooling constant

Rev.	Changes Summary	Performed	Checked	Date
Performed by				
Checked by			Page	Revision
Date	13/04/2022		8 / 11	

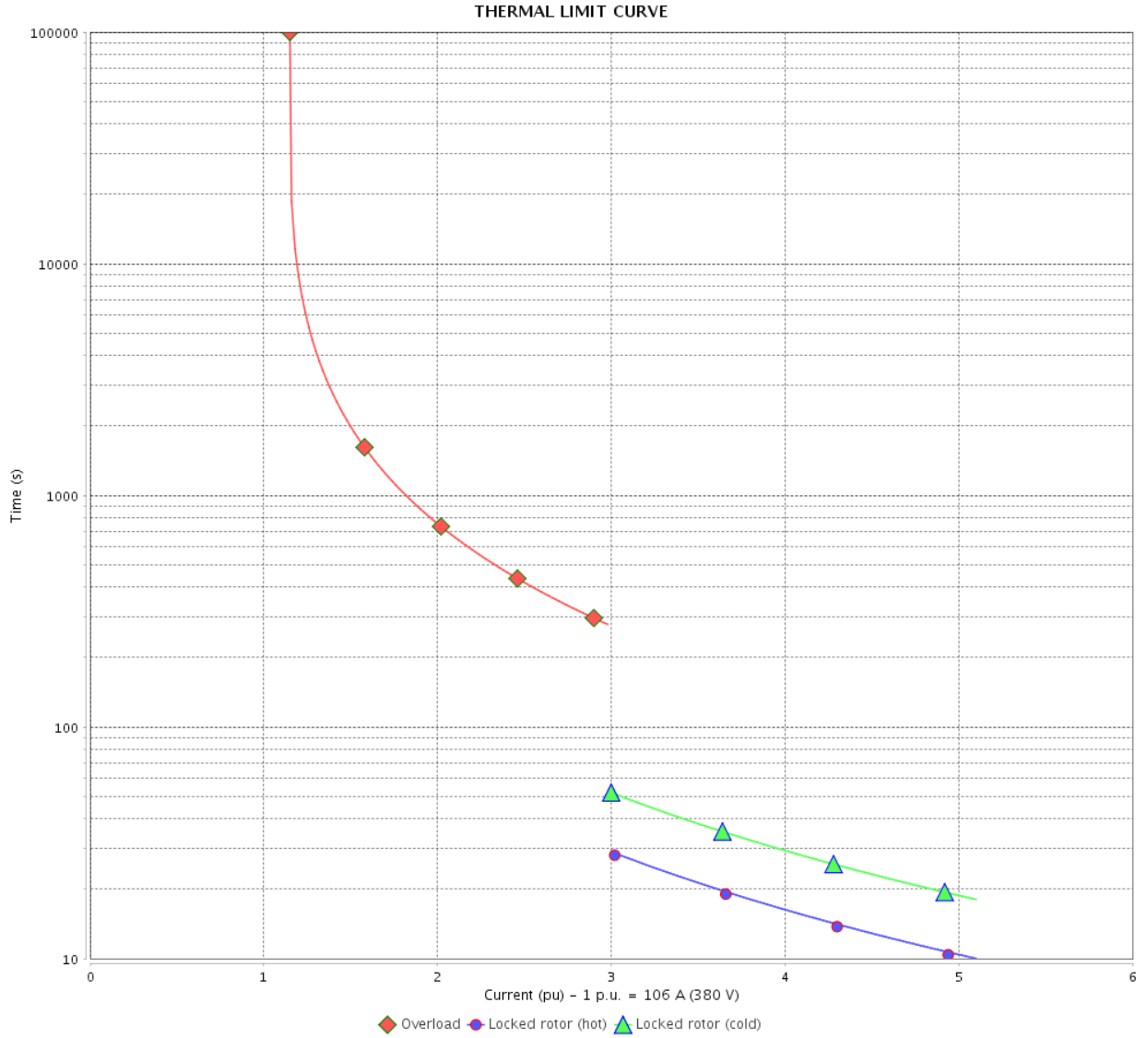


# THERMAL LIMIT CURVE

Three Phase Induction Motor - Squirrel Cage



Customer : \_\_\_\_\_



Rev.	Changes Summary	Performed	Checked	Date
Performed by		Page		Revision
Checked by		9 / 11		
Date		13/04/2022		

# VFD OPERATION CURVE

Three Phase Induction Motor - Squirrel Cage



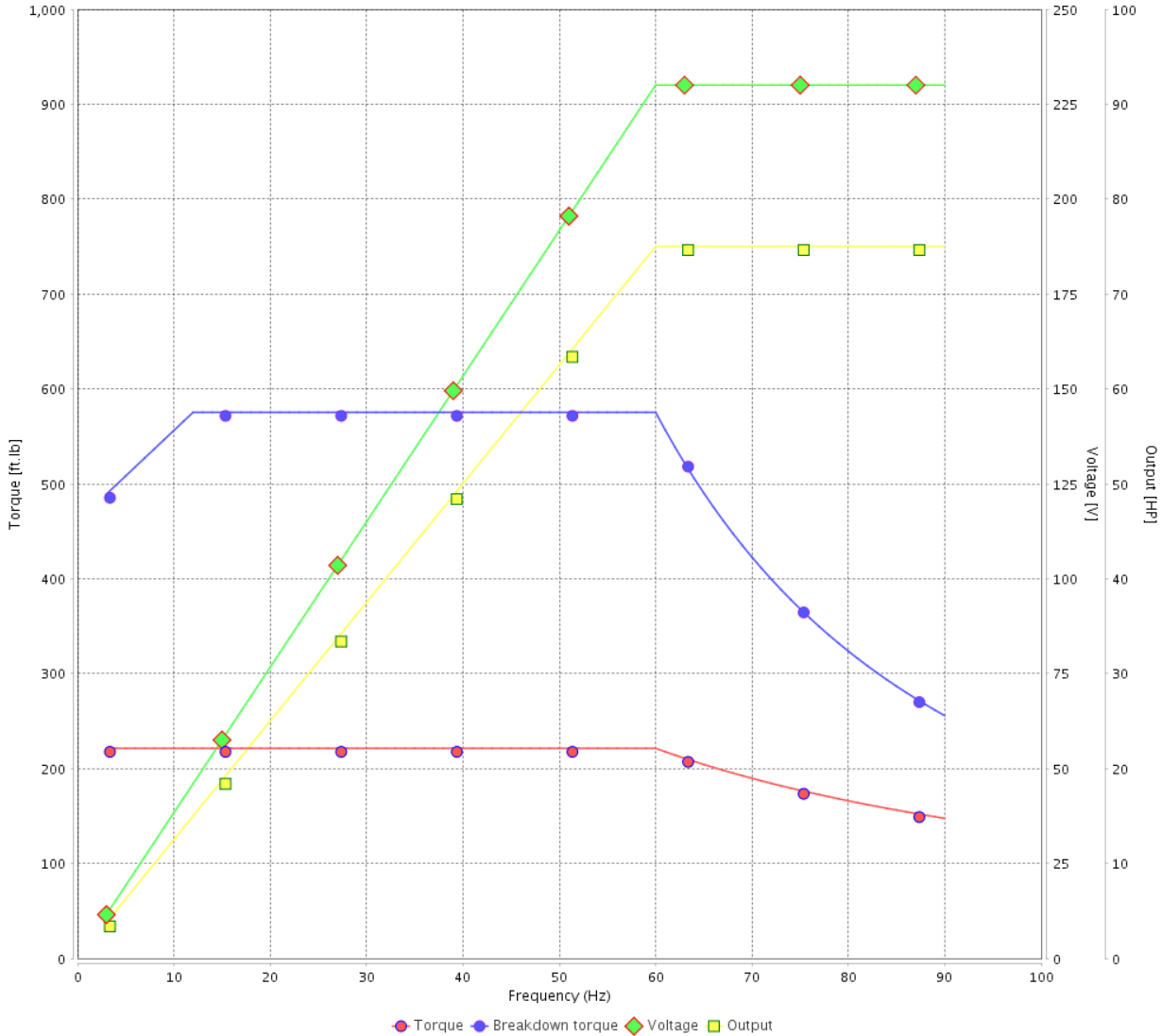
Customer :

Product line : NEMA Premium Efficiency Three-Phase

Product code : 12693676

Catalog # : 07518ET3E365T-W22G

VFD OPERATION CURVE



Performance : 208-230/460 V 60 Hz 4P

Rated current : 186-174/87.2 A  
 LRC : 6.4  
 Rated torque : 221 ft.lb  
 Locked rotor torque : 240 %  
 Breakdown torque : 260 %  
 Rated speed : 1780 rpm

Moment of inertia (J)  
 Duty cycle : Cont.(S1)  
 Insulation class : F  
 Service factor : 1.25  
 Temperature rise : 80 K  
 Design : B

Rev.	Changes Summary	Performed	Checked	Date
Performed by			Page	Revision
Checked by			10 / 11	
Date	13/04/2022			

# VFD OPERATION CURVE

## Three Phase Induction Motor - Squirrel Cage

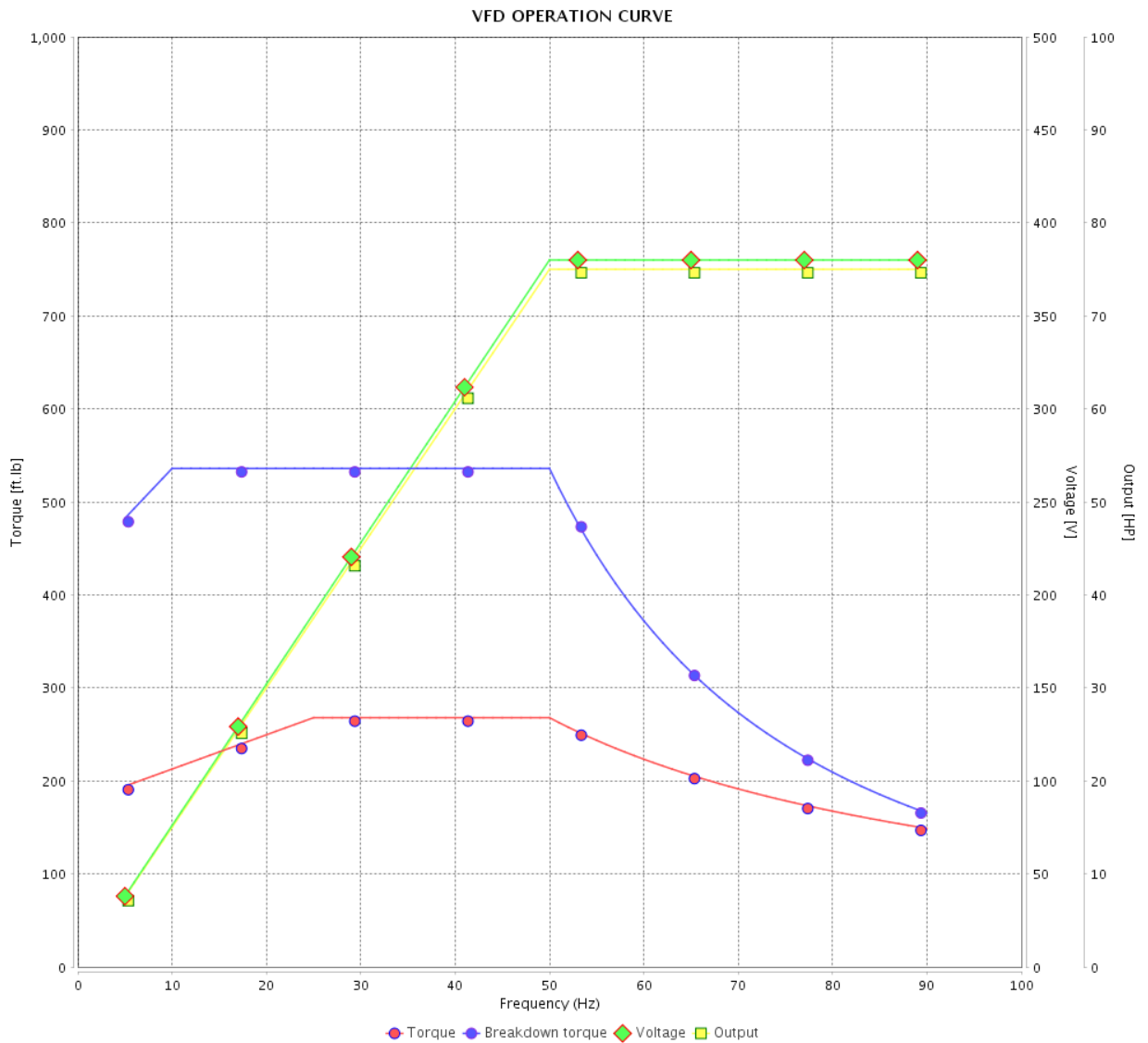


Customer :

Product line : NEMA Premium Efficiency Three-Phase

Product code : 12693676

Catalog # : 07518ET3E365T-W22G



Performance : 380 V 50 Hz 4P

Rated current : 106 A  
 LRC : 5.1  
 Rated torque : 268 ft.lb  
 Locked rotor torque : 170 %  
 Breakdown torque : 200 %  
 Rated speed : 1470 rpm

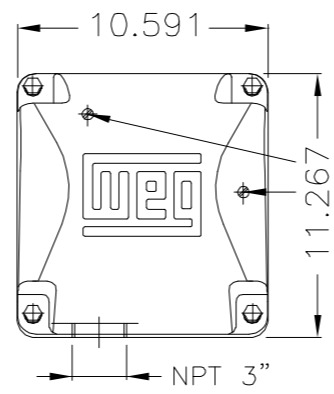
Moment of inertia (J)  
 Duty cycle : Cont.(S1)  
 Insulation class : F  
 Service factor : 1.00  
 Temperature rise : 80 K  
 Design : B

Rev.	Changes Summary	Performed	Checked	Date
Performed by				Page 11 / 11
Checked by				
Date	13/04/2022			

EIXO/SHAFT	
PADRÃO/STANDARD	X
OPCIONAL/OPTIONAL	
ESPECIAL/SPECIAL	

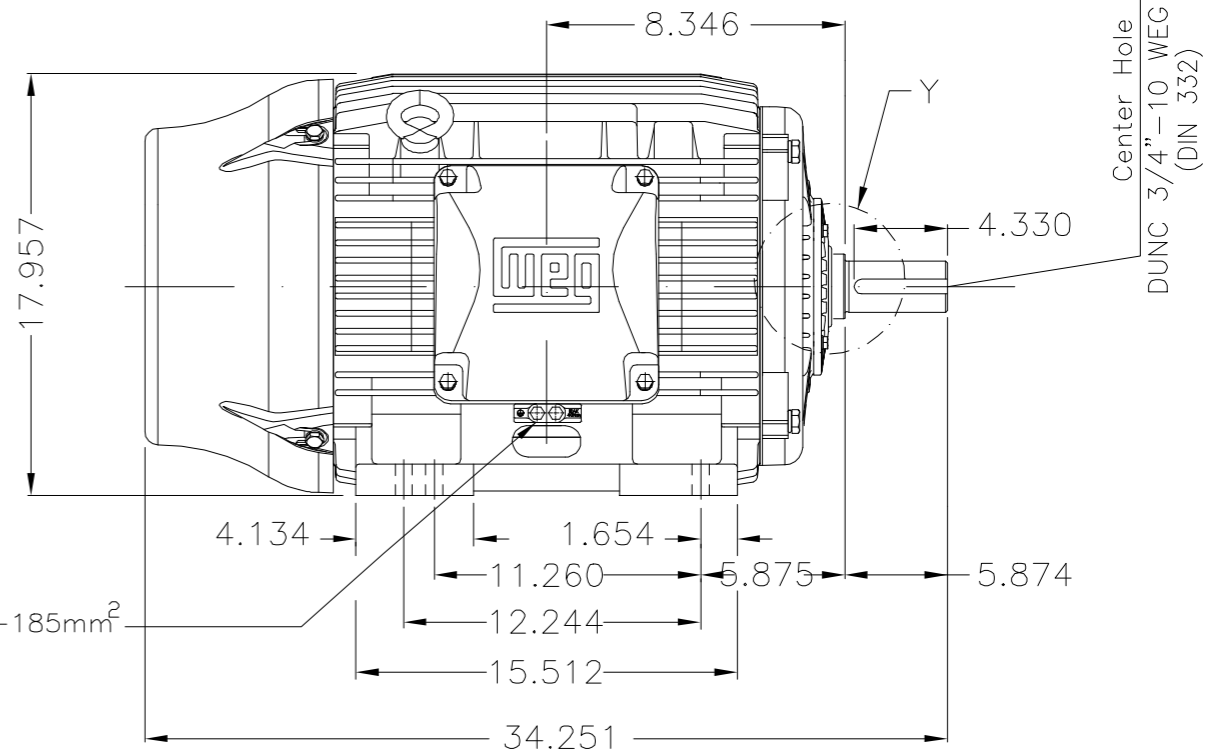
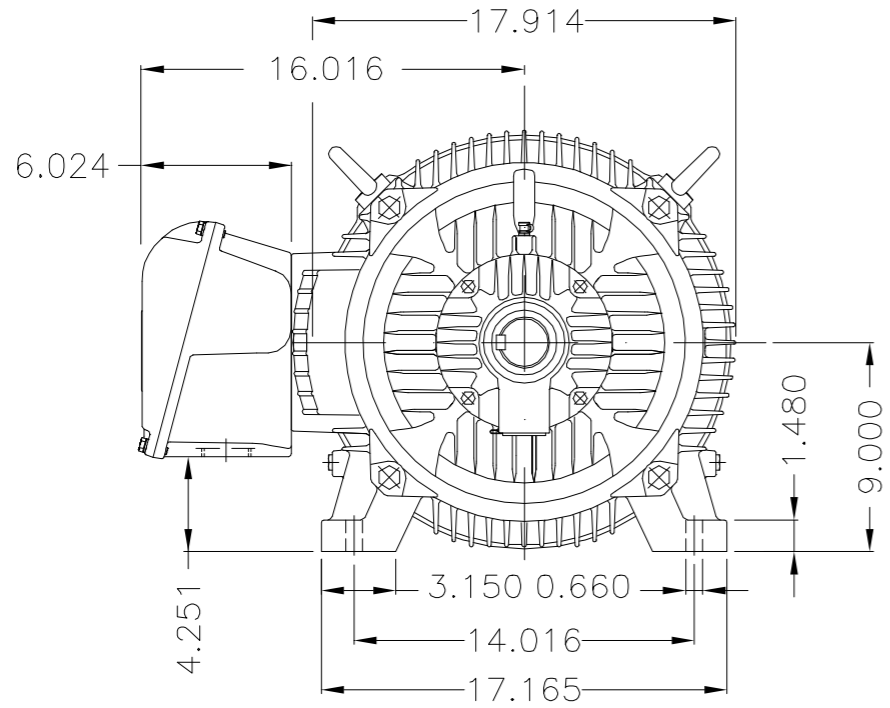
Dimensões em polegadas  
Dimensions in inches

THIS IS AN UPDATED REVISION, THE PREVIOUS ONE MUST BE DISREGARDED.



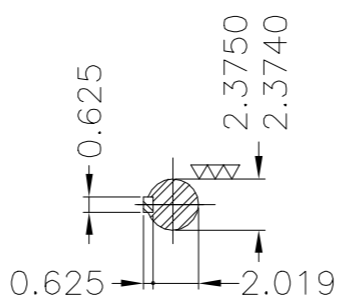
Main terminal box

Grounding for leads 25-50mm<sup>2</sup>



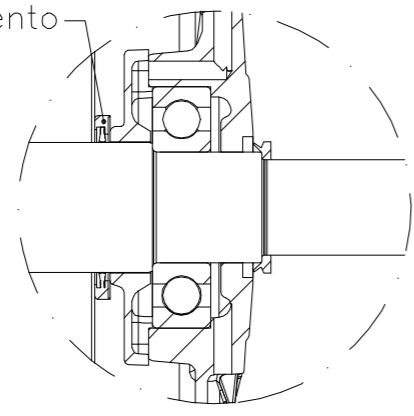
Center Hole  
DUNC 3/4"-10 WEG TBG12  
(DIN 332)

Grounding for leads 25-185mm<sup>2</sup>



DE Shaft End

Anel de aterramento



Detail Y

Kit porta escova de aterramento AEGIS interno na tampa dianteira /  
Brush holder Kit AEGIS internal D.E.  
Plano de pintura 203A / Painting plan 203A  
Forma construtiva NEMA F-1 / Mounting NEMA F-1  
Forma construtiva B3D / Mounting B3R(D)

WEG ELECTRIC CORP.

500001025383		RETIRADO NOTA TAMPA ISOLADA	ITALOGRAHL	ITALOGRAHL	15.04.2015	03
500000893425		RETIRADO CARIMBO LOTE PILOTO	WILLIANR	DWAGNER	22.05.2014	02
ECM	LOC	SUMMARY OF MODIFICATIONS	EXECUTED	CHECKED	RELEASED	DATE
EXECUTED	PATRICKL	THREE PHASE W22 MOTOR - NEMA PREMIUM EFF				
CHECKED		FRAME 364/5T IP55				
RELEASED	ALCHINI					
REL DT	10.02.2014	WMO	JARAGUA DO SUL	ENGENHARIA DE PRODUTO	10002700161	000   03
					SHEET	1 / 1

OV: 3053340  
PC: ATL000021712

75 HP 04 Poles 60Hz





Mod.TE1BFOXON  
CC029A

MODEL 07518ET3E365T-W22G

Inverter Duty Motor  
Severe Duty

60Hz: For use on PWM: VT 1000:1,  
CT 20:1, 1.00SF

MADE IN BRAZIL  
12693676

PH3 60Hz Fr. 364/5T 1000m.a.s.l. IP55 TEFC 925lb

V 230/460

A 174/87.2

HP 75

kW 55

SF 1.25

SFA 218/109

RPM 1780

PF 0.83

AMB 40°C

INS cl. F DT80K

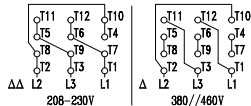
NEMA NOM EFF 95.4%

DUTY CONT.

DES B Code G

USABLE @208V 186A SF 1.10 SFA 205

75HP 55kW 50Hz 380V 106A 1470RPM SF 1.00 EFF 93.6% (IE2)



→ 6314-C3 (27g)

→ 6314-C3 (27g)



MOBIL POLYREX EM (12000h)

