

DATA SHEET



Three Phase Induction Motor - Squirrel Cage

Customer :																			
Product line	: NEMA Premium Efficiency Three-Phase																		
Product code :	12208161																		
Catalog # :	15009ET3G449T-W22																		
Frame : 447/9T Output : 150 HP (110 kW) Poles : 8 Frequency : 60 Hz Rated voltage : 460 V Rated current : 190 A L. R. Amperes : 1178 A LRC : 6.2x(Code G) No load current : 84.3 A Rated speed : 890 rpm Slip : 1.11 % Rated torque : 885 ft.lb Locked rotor torque : 200 % Breakdown torque : 220 % Insulation class : F Service factor : 1.15 Design : B	Locked rotor time : 32s (cold) 18s (hot) Temperature rise : 80 K Duty cycle : Cont.(S1) Ambient temperature : -20°C to +40°C Altitude : 1000 m.a.s.l. Protection degree : IP55 Cooling method : IC411 - TEFC Mounting : F-1 Rotation ¹ : Both (CW and CCW) Noise level ² : 66.0 dB(A) Starting method : Direct On Line Approx. weight ³ : 2858 lb																		
Output	25% 50% 75% 100%																		
Efficiency (%)	0.000 93.9 94.5 94.5																		
Power Factor	0.00 0.61 0.71 0.77																		
Foundation loads																			
Max. traction	: 3762 lb																		
Max. compression	: 6619 lb																		
	<table border="0"> <tr> <td></td> <td style="text-align: center;"><u>Drive end</u></td> <td style="text-align: center;"><u>Non drive end</u></td> </tr> <tr> <td>Bearing type :</td> <td>6322 C3</td> <td>6319 C3</td> </tr> <tr> <td>Sealing :</td> <td>WSeal</td> <td>WSeal</td> </tr> <tr> <td>Lubrication interval :</td> <td>14000 h</td> <td>17000 h</td> </tr> <tr> <td>Lubricant amount :</td> <td>60 g</td> <td>45 g</td> </tr> <tr> <td>Lubricant type :</td> <td colspan="2" style="text-align: center;">Mobil Polyrex EM</td> </tr> </table>		<u>Drive end</u>	<u>Non drive end</u>	Bearing type :	6322 C3	6319 C3	Sealing :	WSeal	WSeal	Lubrication interval :	14000 h	17000 h	Lubricant amount :	60 g	45 g	Lubricant type :	Mobil Polyrex EM	
	<u>Drive end</u>	<u>Non drive end</u>																	
Bearing type :	6322 C3	6319 C3																	
Sealing :	WSeal	WSeal																	
Lubrication interval :	14000 h	17000 h																	
Lubricant amount :	60 g	45 g																	
Lubricant type :	Mobil Polyrex EM																		
Notes																			
This revision replaces and cancel the previous one, which must be eliminated. (1) Looking the motor from the shaft end. (2) Measured at 1m and with tolerance of +3dB(A). (3) Approximate weight subject to changes after manufacturing process. (4) At 100% of full load.																			
These are average values based on tests with sinusoidal power supply, subject to the tolerances stipulated in NEMA MG-1.																			
Rev.	Changes Summary	Performed	Checked	Date															
Performed by																			
Checked by			Page	Revision															
Date	13/04/2022		1 / 6																

TORQUE AND CURRENT VS SPEED CURVE

Three Phase Induction Motor - Squirrel Cage



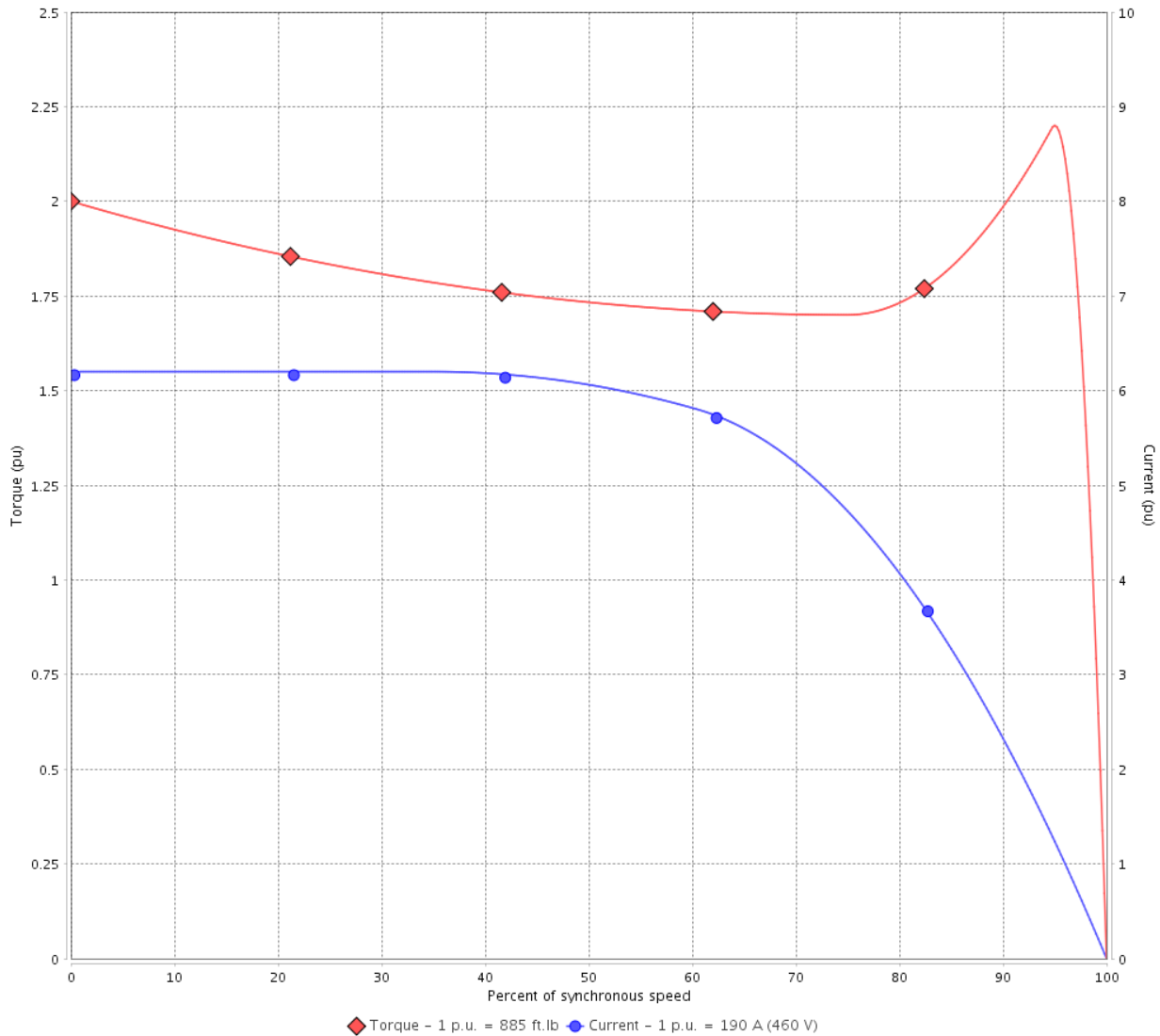
Customer :

Product line : NEMA Premium Efficiency Three-Phase

Product code : 12208161

Catalog # : 15009ET3G449T-W22

TORQUE AND CURRENT VS SPEED CURVE



Performance : 460 V 60 Hz 8P

Rated current	: 190 A	Moment of inertia (J)	
LRC	: 6.2	Duty cycle	: Cont.(S1)
Rated torque	: 885 ft.lb	Insulation class	: F
Locked rotor torque	: 200 %	Service factor	: 1.15
Breakdown torque	: 220 %	Temperature rise	: 80 K
Rated speed	: 890 rpm	Design	: B

Locked rotor time : 32s (cold) 18s (hot)

Rev.	Changes Summary	Performed	Checked	Date
Performed by			Page 2 / 6	Revision
Checked by				
Date	13/04/2022			

LOAD PERFORMANCE CURVE

Three Phase Induction Motor - Squirrel Cage

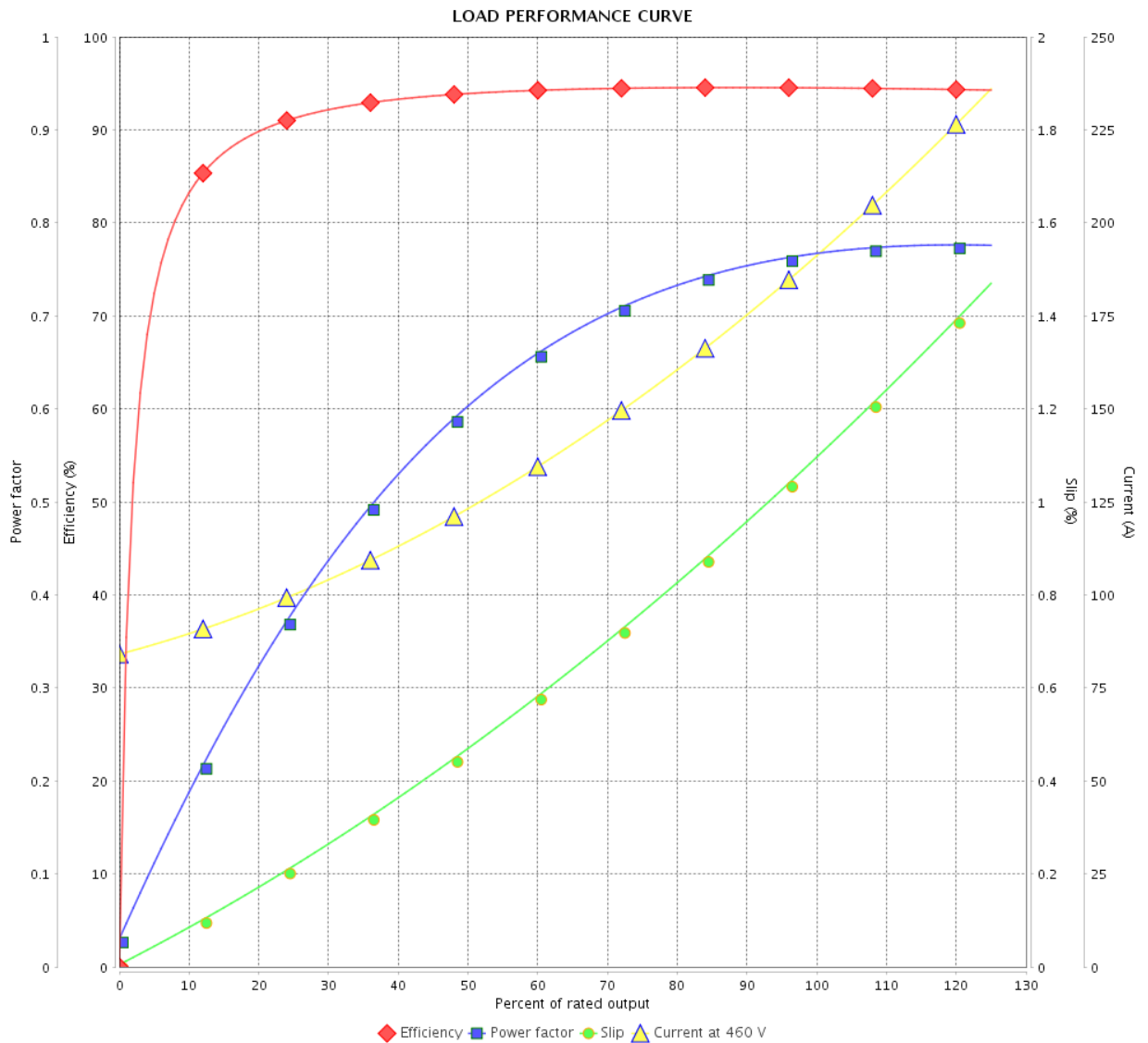


Customer : _____

Product line : NEMA Premium Efficiency Three-Phase

Product code : 12208161

Catalog # : 15009ET3G449T-W22



Performance : 460 V 60 Hz 8P

Rated current : 190 A
 LRC : 6.2
 Rated torque : 885 ft.lb
 Locked rotor torque : 200 %
 Breakdown torque : 220 %
 Rated speed : 890 rpm

Moment of inertia (J)
 Duty cycle : Cont.(S1)
 Insulation class : F
 Service factor : 1.15
 Temperature rise : 80 K
 Design : B

Rev.	Changes Summary	Performed	Checked	Date
Performed by		Page		Revision
Checked by		3 / 6		
Date		13/04/2022		

THERMAL LIMIT CURVE

Three Phase Induction Motor - Squirrel Cage



Customer :

Product line : NEMA Premium Efficiency Three-Phase
Product code : 12208161
Catalog # : 15009ET3G449T-W22

Performance : 460 V 60 Hz 8P

Rated current	: 190 A	Moment of inertia (J)	
LRC	: 6.2	Duty cycle	: Cont.(S1)
Rated torque	: 885 ft.lb	Insulation class	: F
Locked rotor torque	: 200 %	Service factor	: 1.15
Breakdown torque	: 220 %	Temperature rise	: 80 K
Rated speed	: 890 rpm	Design	: B

Heating constant

Cooling constant

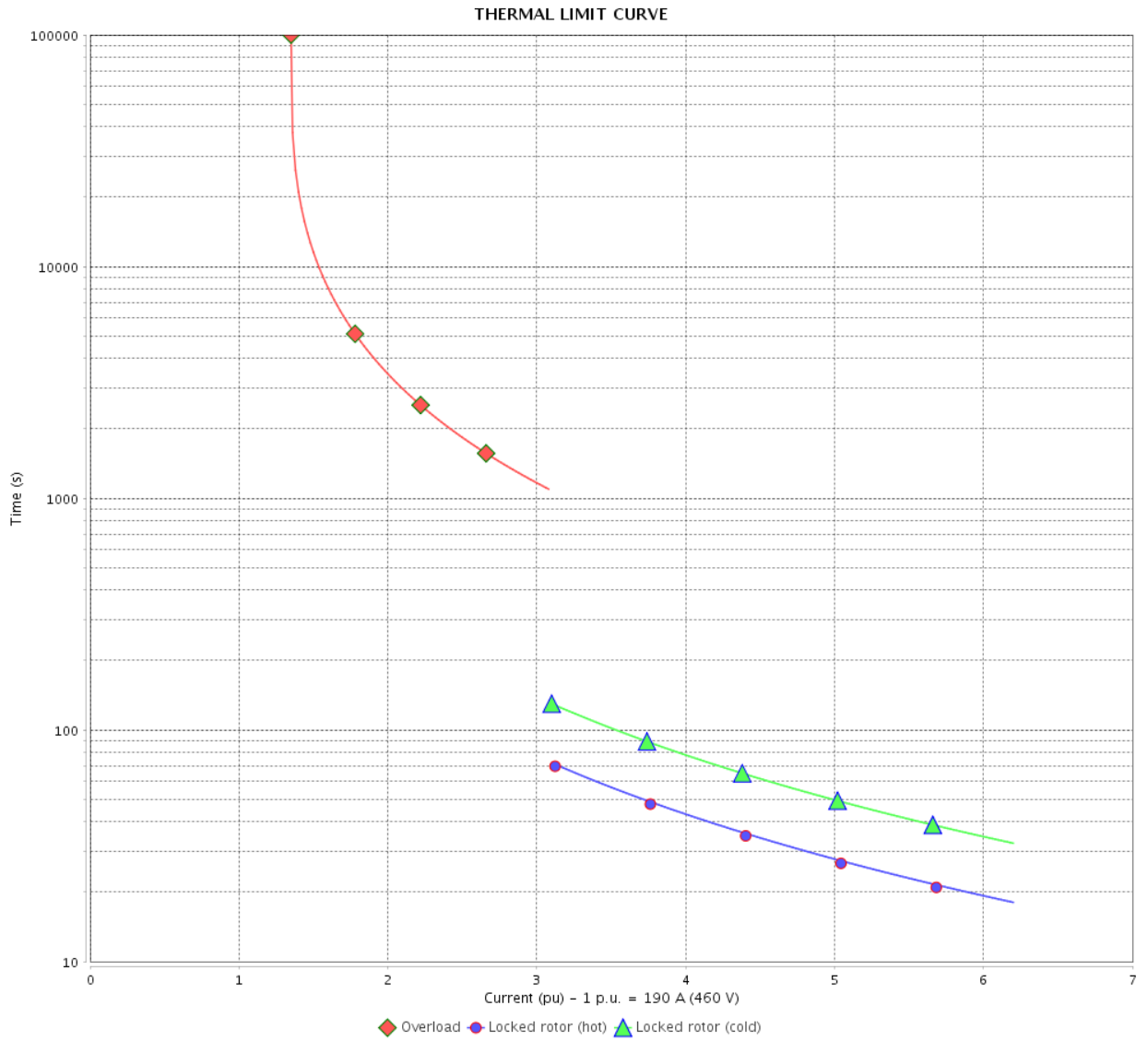
Rev.	Changes Summary	Performed	Checked	Date
Performed by				
Checked by			Page	Revision
Date	13/04/2022		4 / 6	

THERMAL LIMIT CURVE

Three Phase Induction Motor - Squirrel Cage



Customer : _____



Rev.	Changes Summary	Performed	Checked	Date
Performed by		Page 5 / 6		Revision
Checked by				
Date				

VFD OPERATION CURVE

Three Phase Induction Motor - Squirrel Cage

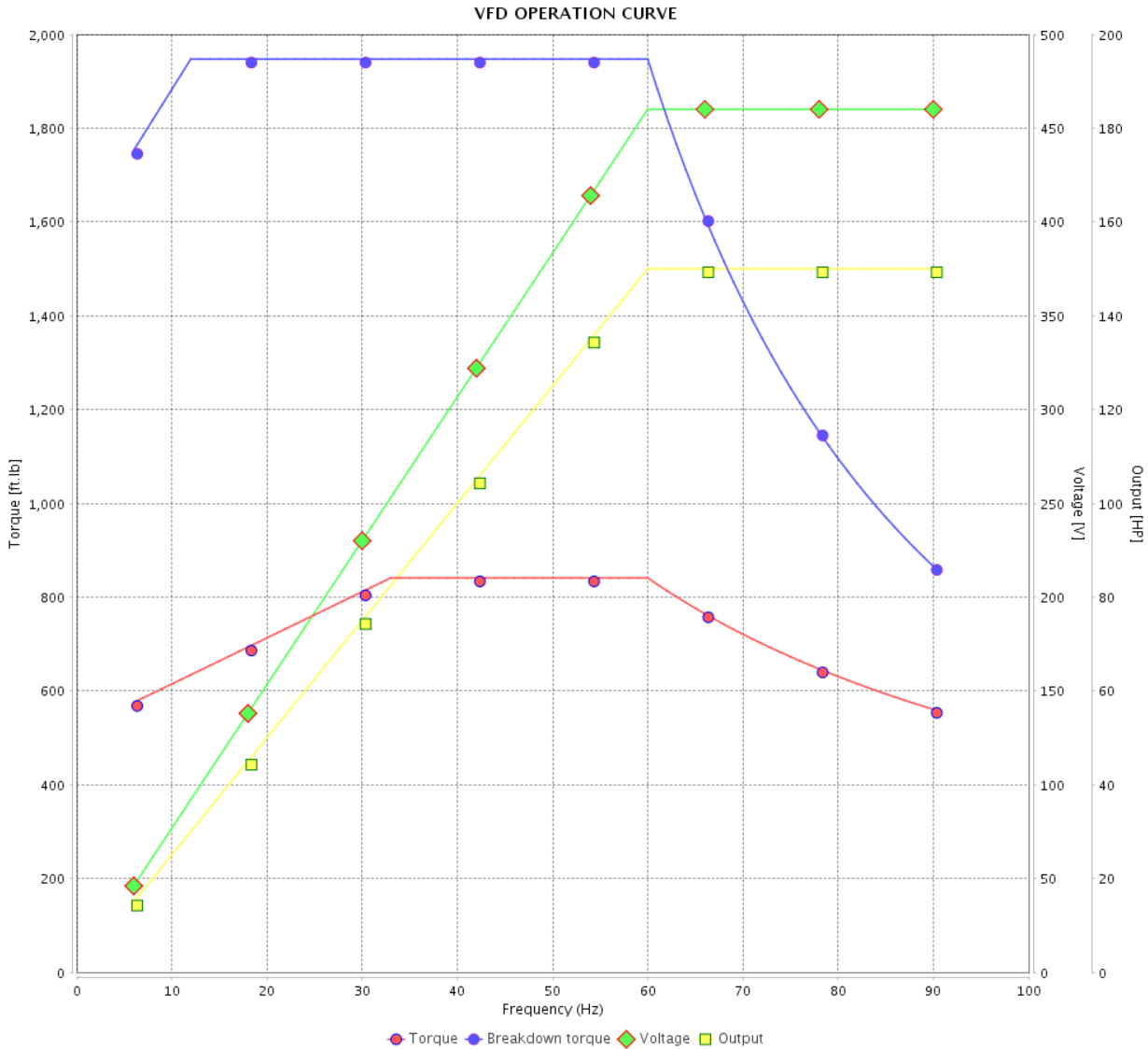


Customer :

Product line : NEMA Premium Efficiency Three-Phase

Product code : 12208161

Catalog # : 15009ET3G449T-W22

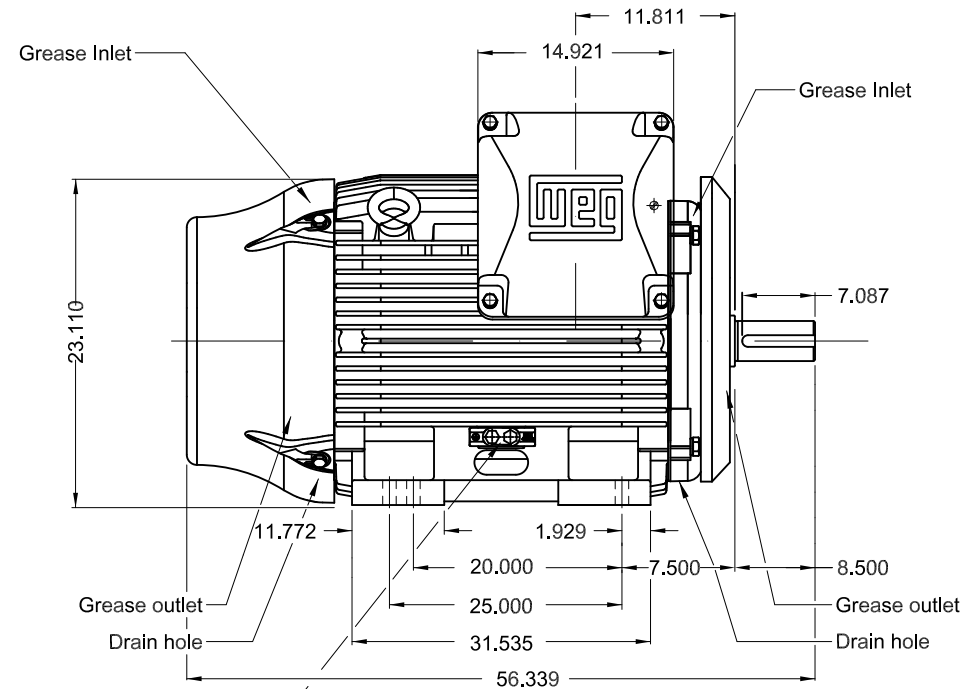
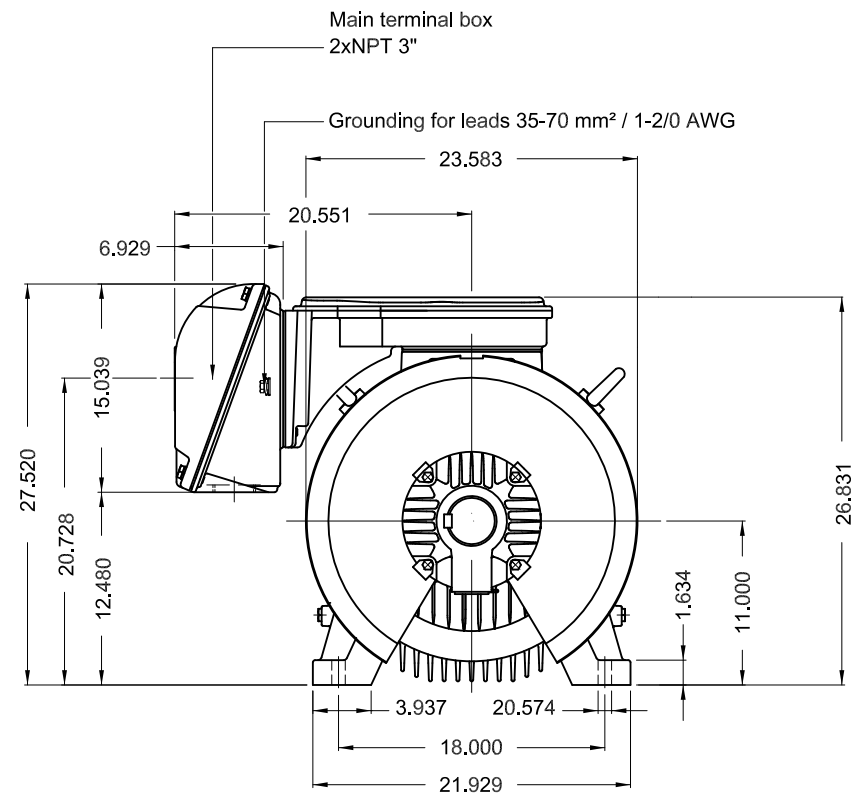


Performance : 460 V 60 Hz 8P

Rated current : 190 A
 LRC : 6.2
 Rated torque : 885 ft.lb
 Locked rotor torque : 200 %
 Breakdown torque : 220 %
 Rated speed : 890 rpm

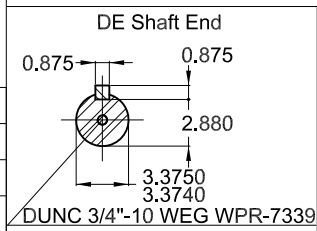
Moment of inertia (J)
 Duty cycle : Cont.(S1)
 Insulation class : F
 Service factor : 1.15
 Temperature rise : 80 K
 Design : B

Rev.	Changes Summary	Performed	Checked	Date
Performed by			Page 6 / 6	Revision
Checked by				
Date	13/04/2022			



Grounding for leads 25-185 mm² / 3AWG-350MCM

Drive-End Air Deflector
 Color RAL 5009
 Painting plan 203A
 Mounting B3R(D)



150 HP 08 Poles 60 Hz

A

ECM	LOC	SUMMARY OF MODIFICATIONS	EXECUTED	CHECKED	RELEASED	DATE	VER
EXECUTED	PIRWUSER	THREE PH. MOTOR W22 PREM. EFF.					
CHECKED		FRAME 447/9T IP55 TEFC					
RELEASED							
REL DT.	WMO	Jaragua do Sul	Product Engineering	SHEET	1 / 1		

PREVIEW
 WDD



MODEL 15009ET3G449T-W22
MADE IN BRAZIL
12208161

WEG **W22 NEMA**
CC029A Premium
Inverter Duty Motor
Severe Duty

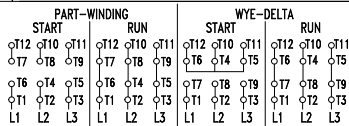


FOR SAFE AREA
MOD.TE1BFOXON



Class I, Div 2, Gr. A, B, C and D - T3
Class I, Zone 2, IIC - T3
Class II, Div 2, Gr. F and G - T3C
For use on PWM, Gr. A, B, C, D and F,
VT 1000:1, CT 20:1, 1.0SF, T3

PH 3	FR 447/9T	HP(kW) 150(110)	Hz 60
V 460	A 190		IP55
NEMA NOM EFF	94.5 %	RPM 890	
ENCL TEFC	DUTY CONT.	INS. CL. F	ΔT 80 K
PF 0.77	DES B	CODE G	AMB. 40°C
SF 1.15	SFA 218	ALT 1000 m.a.s.l.	



→ 6322-C3(60g)
→ 6319-C3(45g)

MOBIL POLYREX EM
14000 h

2888 Lbs