

DATA SHEET



Three Phase Induction Motor - Squirrel Cage

Customer :						
Product line		: W40 NEMA Premium Efficiency Three-Phase		Product code : 14272545		
				Catalog # : 15036OT3H405TS-W40		
Frame : 404/5TS Output : 150 HP (110 kW) Poles : 2 Frequency : 60 Hz Rated voltage : 575 V Rated current : 134 A L. R. Amperes : 882 A LRC : 6.6x(Code G) No load current : 32.0 A Rated speed : 3552 rpm Slip : 1.33 % Rated torque : 222 ft.lb Locked rotor torque : 200 % Breakdown torque : 250 % Insulation class : F Service factor : 1.25 Moment of inertia (J) : 8.80 sq.ft.lb Design : B			Locked rotor time : 16s (cold) 9s (hot) Temperature rise : 80 K Duty cycle : Cont.(S1) Ambient temperature : -20°C to +40°C Altitude : 1000 m.a.s.l. Protection degree : IP23 Cooling method : IC01 - ODP Mounting : F-1 Rotation ¹ : Both (CW and CCW) Noise level ² : 84.0 dB(A) Starting method : Direct On Line Approx. weight ³ : 878 lb			
Output		25%	50%	75%	100%	
Efficiency (%)		93.5	93.6	94.1	94.1	
Power Factor		0.58	0.79	0.86	0.88	
Foundation loads						
Max. traction : 1224 lb						
Max. compression : 2101 lb						
		<u>Drive end</u>		<u>Non drive end</u>		
Bearing type		: 6314 C3		: 6212 Z C3		
Sealing		: Without Bearing Seal		: Without Bearing Seal		
Lubrication interval		: 14418 h		: 20000 h		
Lubricant amount		: 27 g		: 13 g		
Lubricant type		: Mobil Polyrex EM				
Notes						
This revision replaces and cancel the previous one, which must be eliminated. (1) Looking the motor from the shaft end. (2) Measured at 1m and with tolerance of +3dB(A). (3) Approximate weight subject to changes after manufacturing process. (4) At 100% of full load.			These are average values based on tests with sinusoidal power supply, subject to the tolerances stipulated in NEMA MG-1.			
Rev.	Changes Summary			Performed	Checked	Date
Performed by						
Checked by					Page	Revision
Date	13/04/2022				1 / 6	

TORQUE AND CURRENT VS SPEED CURVE

Three Phase Induction Motor - Squirrel Cage



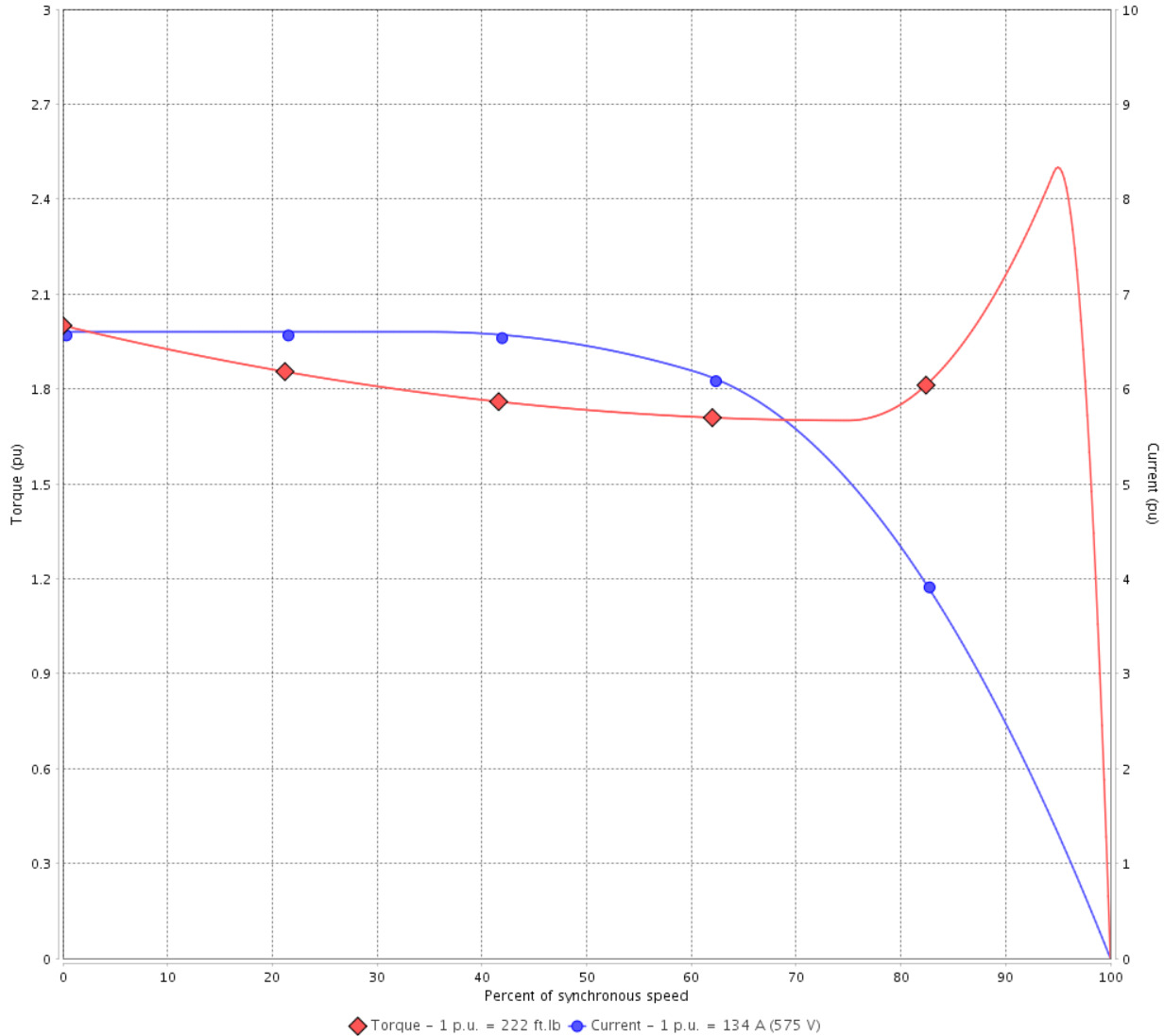
Customer :

Product line : W40 NEMA Premium Efficiency
Three-Phase

Product code : 14272545

Catalog # : 15036OT3H405TS-W40

TORQUE AND CURRENT VS SPEED CURVE



Performance : 575 V 60 Hz 2P

Rated current	: 134 A	Moment of inertia (J)	: 8.80 sq.ft.lb
LRC	: 6.6	Duty cycle	: Cont.(S1)
Rated torque	: 222 ft.lb	Insulation class	: F
Locked rotor torque	: 200 %	Service factor	: 1.25
Breakdown torque	: 250 %	Temperature rise	: 80 K
Rated speed	: 3552 rpm	Design	: B

Locked rotor time : 16s (cold) 9s (hot)

Rev.	Changes Summary	Performed	Checked	Date
Performed by			Page 2 / 6	Revision
Checked by				
Date	13/04/2022			

LOAD PERFORMANCE CURVE

Three Phase Induction Motor - Squirrel Cage

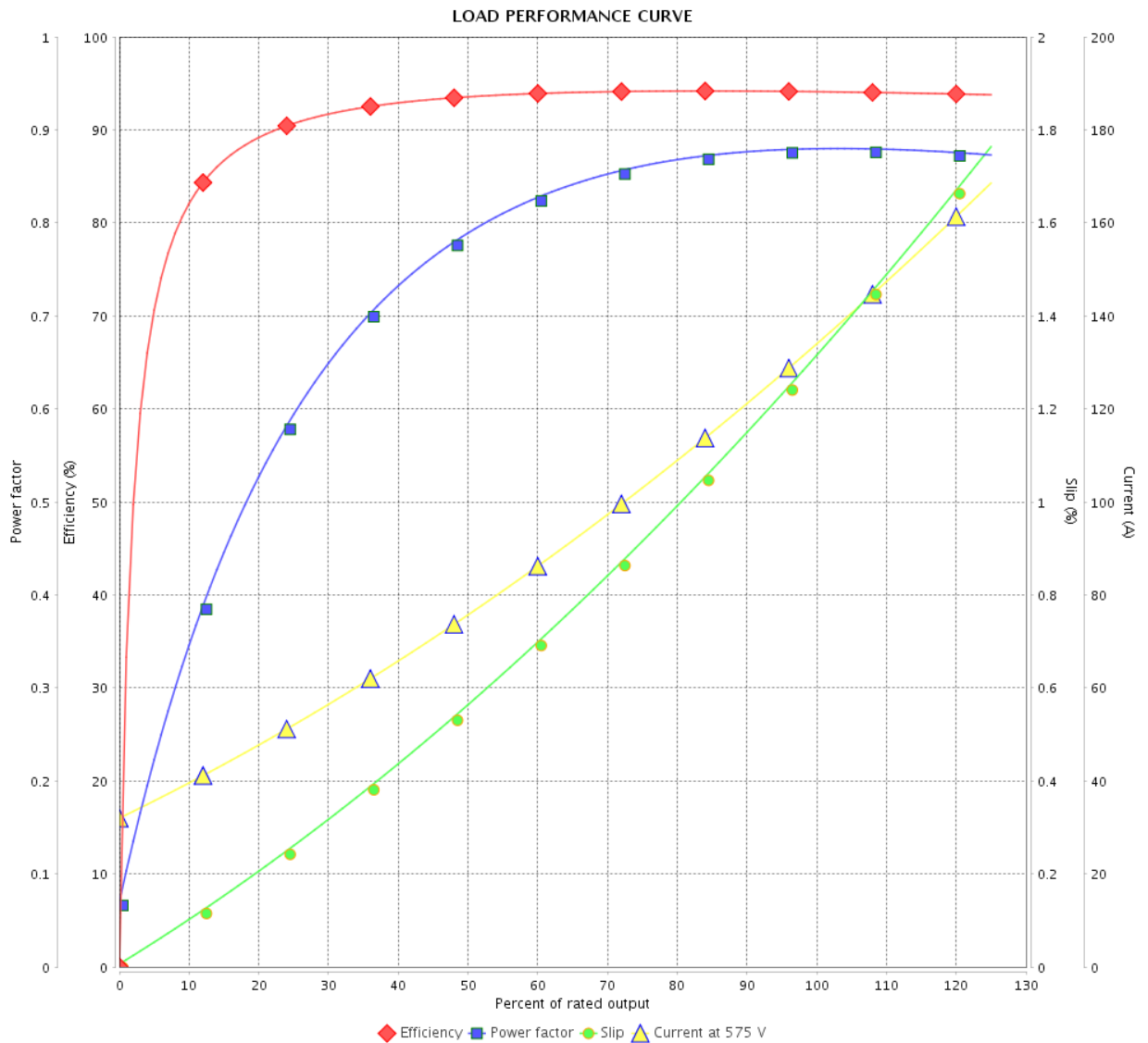


Customer : _____

Product line : W40 NEMA Premium Efficiency
Three-Phase

Product code : 14272545

Catalog # : 15036OT3H405TS-W40



Performance : 575 V 60 Hz 2P

Rated current : 134 A
 LRC : 6.6
 Rated torque : 222 ft.lb
 Locked rotor torque : 200 %
 Breakdown torque : 250 %
 Rated speed : 3552 rpm

Moment of inertia (J) : 8.80 sq.ft.lb
 Duty cycle : Cont.(S1)
 Insulation class : F
 Service factor : 1.25
 Temperature rise : 80 K
 Design : B

Rev.	Changes Summary	Performed	Checked	Date
Performed by				Page 3 / 6
Checked by				
Date				

THERMAL LIMIT CURVE



Three Phase Induction Motor - Squirrel Cage

Customer :

Product line : W40 NEMA Premium Efficiency
Three-Phase

Product code : 14272545

Catalog # : 15036OT3H405TS-W40

Performance : 575 V 60 Hz 2P

Rated current	: 134 A	Moment of inertia (J)	: 8.80 sq.ft.lb
LRC	: 6.6	Duty cycle	: Cont.(S1)
Rated torque	: 222 ft.lb	Insulation class	: F
Locked rotor torque	: 200 %	Service factor	: 1.25
Breakdown torque	: 250 %	Temperature rise	: 80 K
Rated speed	: 3552 rpm	Design	: B

Heating constant

Cooling constant

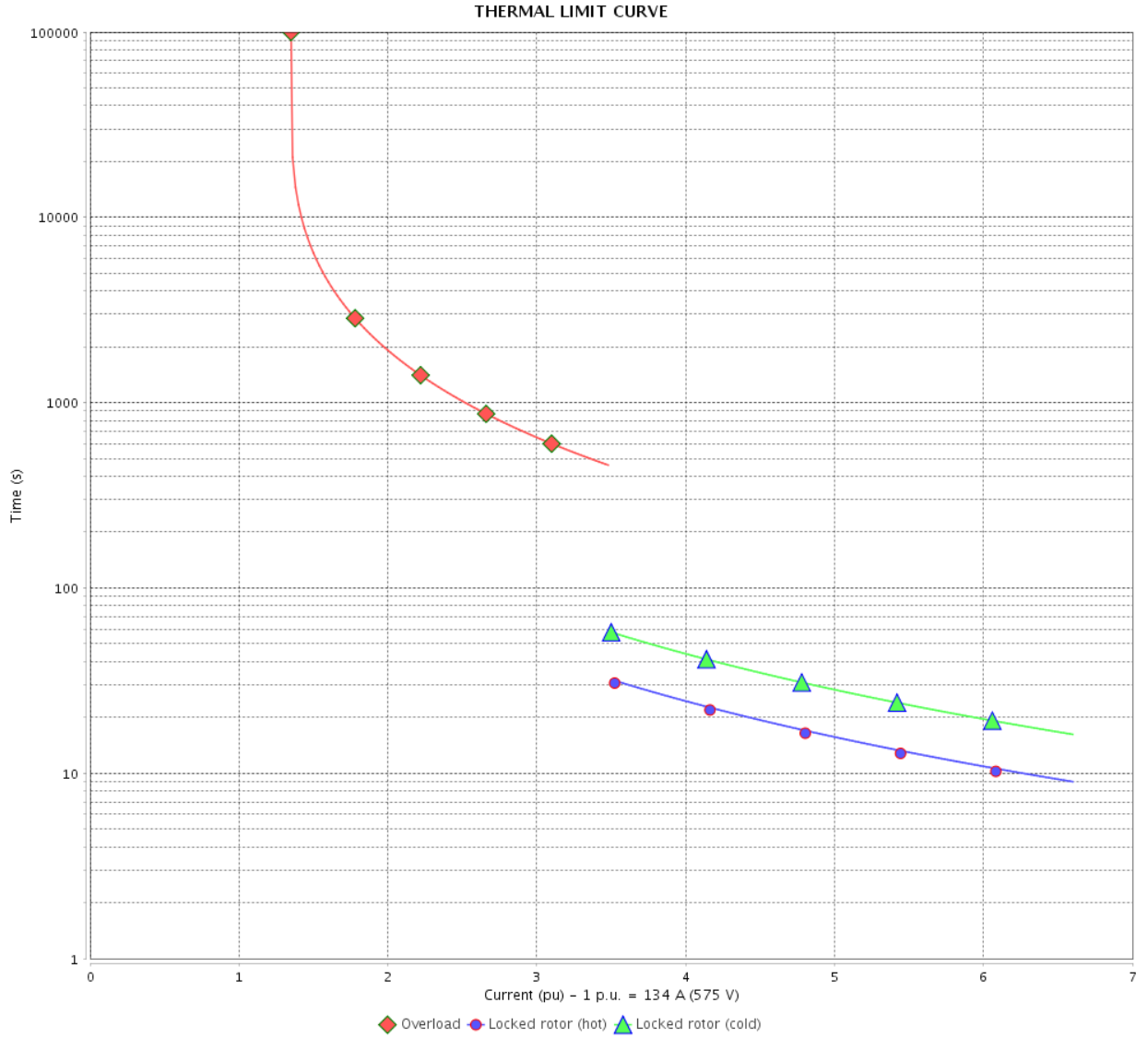
Rev.	Changes Summary	Performed	Checked	Date
Performed by				
Checked by			Page	Revision
Date	13/04/2022		4 / 6	

THERMAL LIMIT CURVE

Three Phase Induction Motor - Squirrel Cage



Customer : _____



Rev.	Changes Summary	Performed	Checked	Date
Performed by				
Checked by				
Date				
			Page	Revision
			5 / 6	

VFD OPERATION CURVE

Three Phase Induction Motor - Squirrel Cage



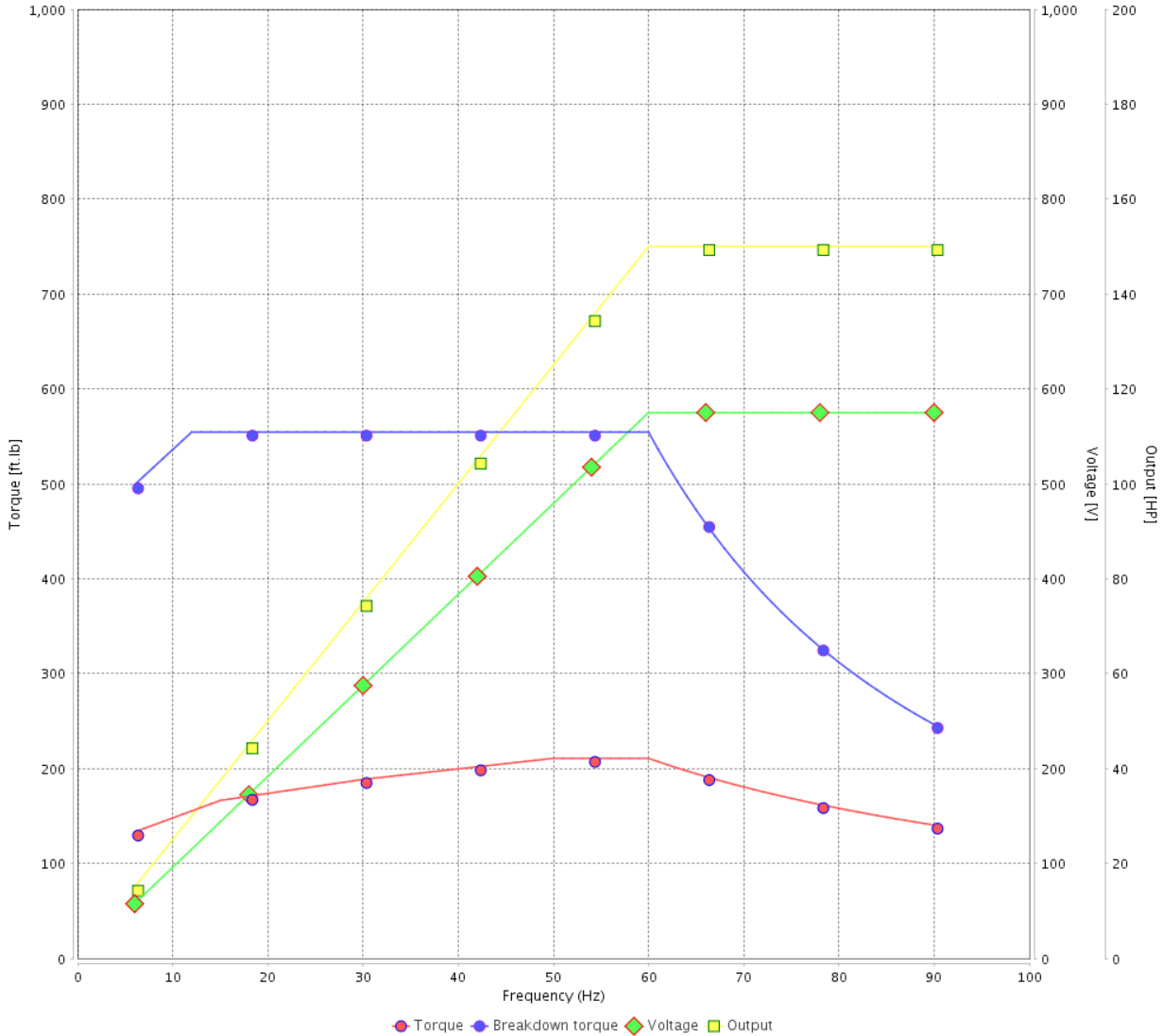
Customer :

Product line : W40 NEMA Premium Efficiency
Three-Phase

Product code : 14272545

Catalog # : 15036OT3H405TS-W40

VFD OPERATION CURVE

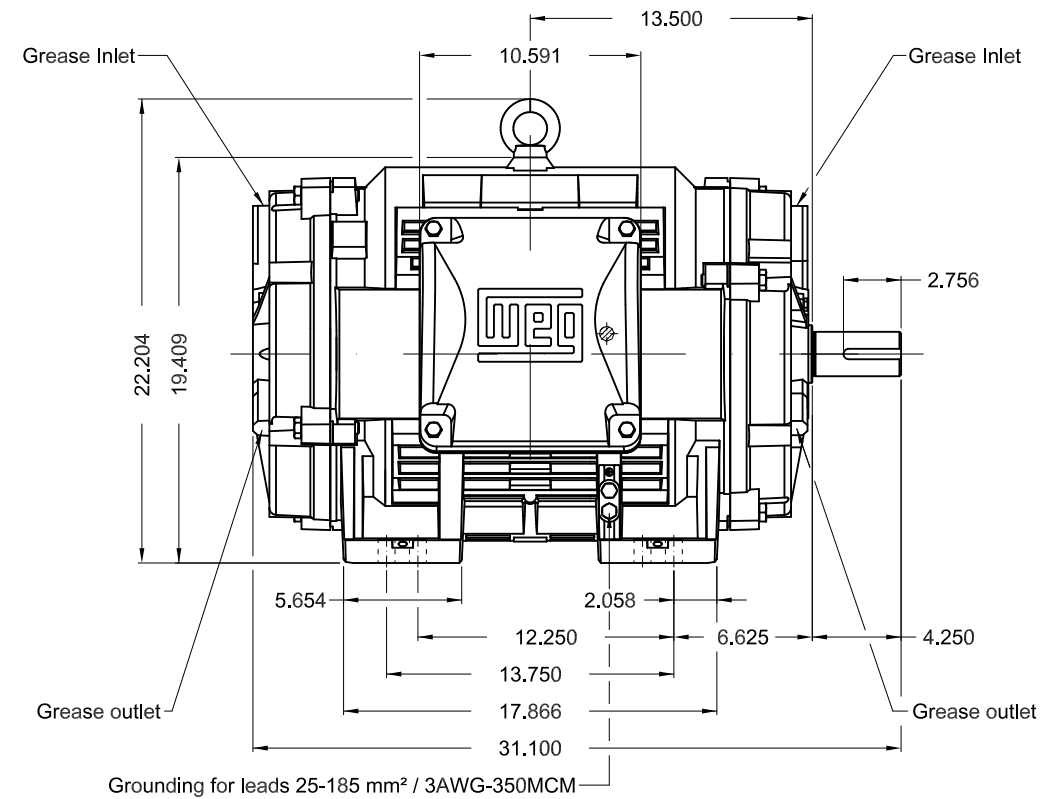
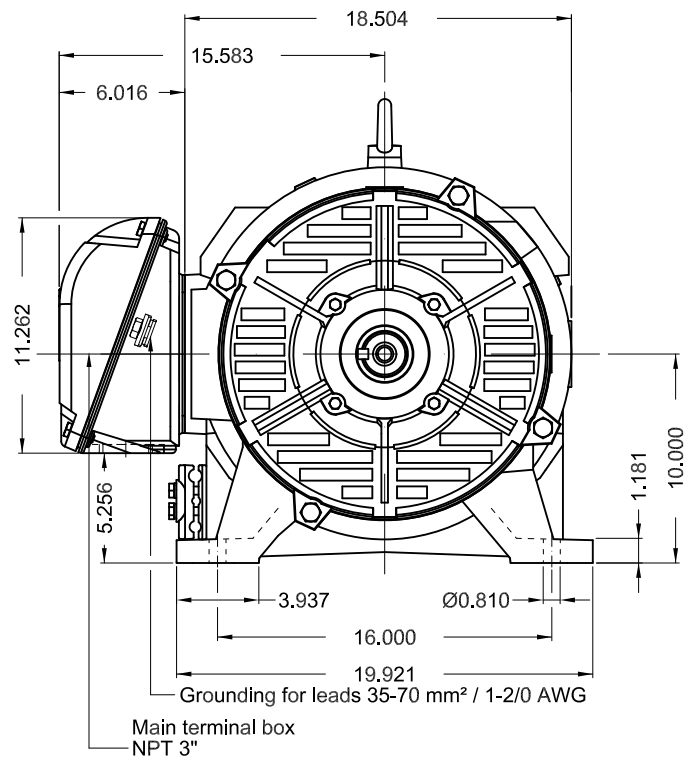


Performance : 575 V 60 Hz 2P

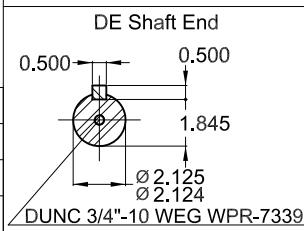
Rated current : 134 A
LRC : 6.6
Rated torque : 222 ft.lb
Locked rotor torque : 200 %
Breakdown torque : 250 %
Rated speed : 3552 rpm

Moment of inertia (J) : 8.80 sq.ft.lb
Duty cycle : Cont.(S1)
Insulation class : F
Service factor : 1.25
Temperature rise : 80 K
Design : B

Rev.	Changes Summary	Performed	Checked	Date
Performed by			Page 6 / 6	Revision
Checked by				
Date	13/04/2022			



Color RAL 5009
 Painting plan 203A
 Mounting NEMA F-1
 Mounting B3R(D)



150 HP 02 Poles 60 Hz

A

1:9

ECM	LOC	SUMMARY OF MODIFICATIONS	EXECUTED	CHECKED	RELEASED	DATE	VER
EXECUTED	PIRWBUSER	THREE PH. MOTOR W40 PREM. EFF.					
CHECKED		FRAME 404/5TS IP23 ODP					
RELEASED							
REL DT.	WMO	Jaragua do Sul	Product Engineering				

PREVIEW
WDD



SHEET 1 / 1

WEG **W40 NEMA**
CC029A Premium
Inverter Duty Motor



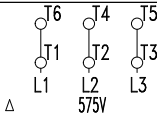
MOD.T01#FOXON



For use on PWM, VT 1000:1, CT 2:1, 1.0SF

DP150502NPBBW40
 MADE IN BRAZIL
 14272545

PH 3	FR 404/5TS	HP(kW) 150(110)	Hz 60
V 575	A 134	IP23	
NEMA NOM EFF	94.1 %	RPM 3552	
ENCL ODP	DUTY CONT.	INS. CL. F Δ T 80 K	
PF 0.88	DES B	CODE G	AMB. 40°C
SF 1.25	SFA 168	ALT 1000 m.a.s.l.	



→ 6314-C3(27g)
 → 6212-Z-C3(13g)

MOBIL POLYREX EM
 14418 h

877 Lbs