

TORQUE AND CURRENT VS SPEED CURVE

Three Phase Induction Motor - Squirrel Cage



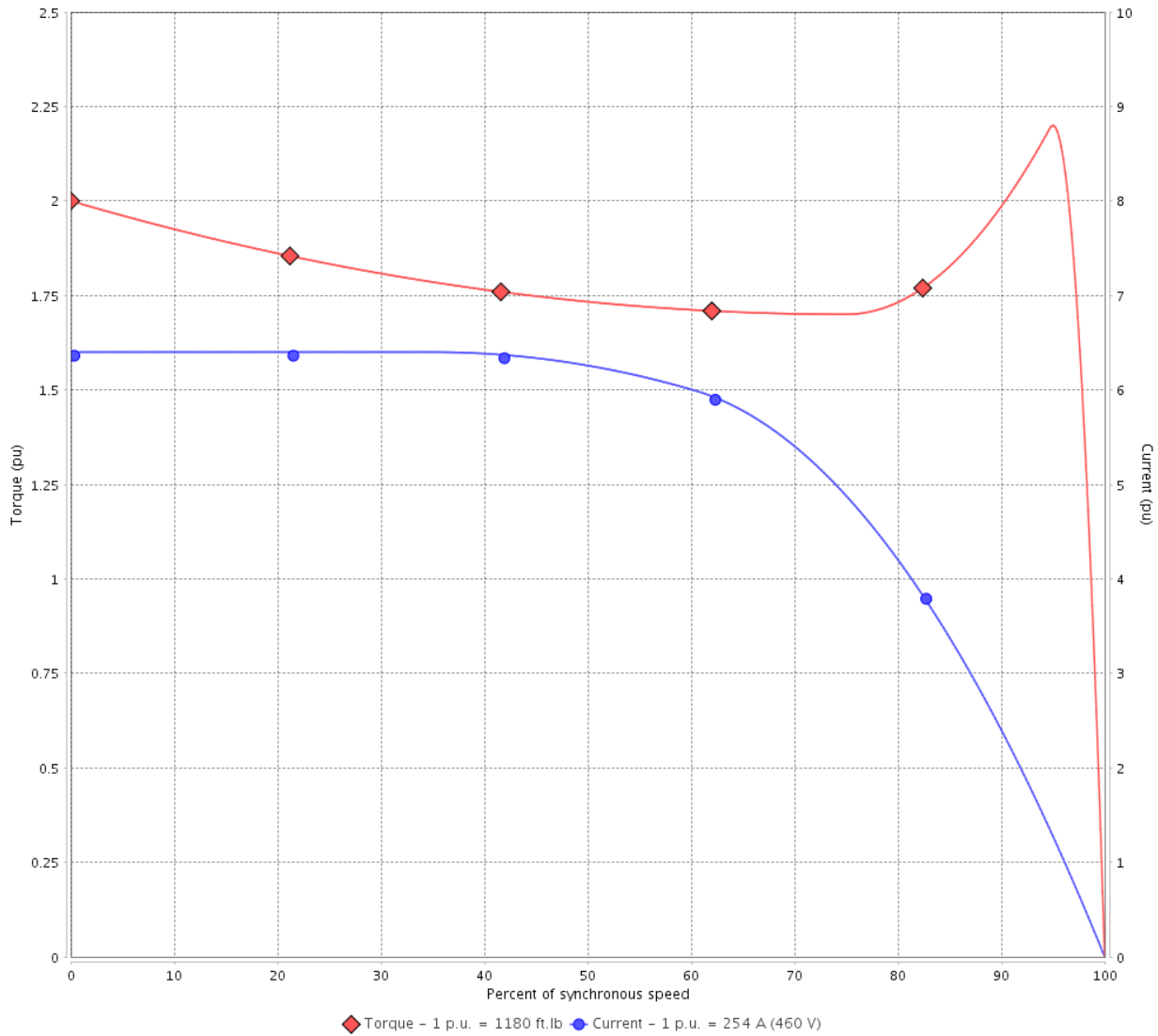
Customer :

Product line : NEMA Premium Efficiency Three-Phase

Product code : 13526433

Catalog # : 20009ET3GKD449T-W22

TORQUE AND CURRENT VS SPEED CURVE



Performance : 460 V 60 Hz 8P

Rated current	: 254 A	Moment of inertia (J)	
LRC	: 6.4	Duty cycle	: Cont.(S1)
Rated torque	: 1180 ft.lb	Insulation class	: F
Locked rotor torque	: 200 %	Service factor	: 1.15
Breakdown torque	: 220 %	Temperature rise	: 80 K
Rated speed	: 890 rpm	Design	: A

Locked rotor time : 23s (cold) 13s (hot)

Rev.	Changes Summary	Performed	Checked	Date
Performed by			Page 2 / 6	Revision
Checked by				
Date	14/04/2022			

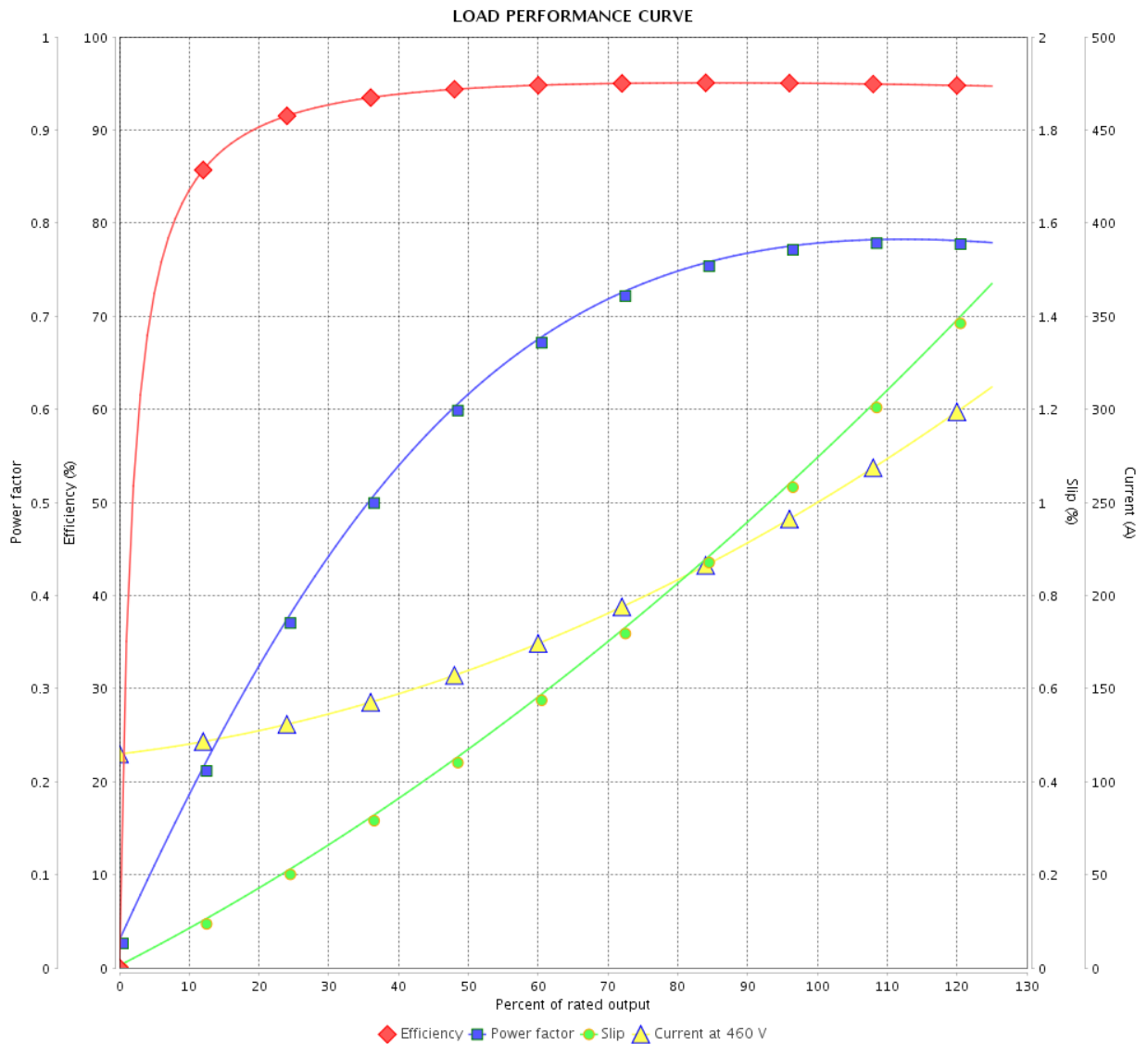
LOAD PERFORMANCE CURVE

Three Phase Induction Motor - Squirrel Cage



Customer : _____

Product line : NEMA Premium Efficiency Three-Phase Product code : 13526433
 Catalog # : 20009ET3GKD449T-W22



Performance : 460 V 60 Hz 8P

Rated current : 254 A
 LRC : 6.4
 Rated torque : 1180 ft.lb
 Locked rotor torque : 200 %
 Breakdown torque : 220 %
 Rated speed : 890 rpm

Moment of inertia (J)
 Duty cycle : Cont.(S1)
 Insulation class : F
 Service factor : 1.15
 Temperature rise : 80 K
 Design : A

Rev.	Changes Summary	Performed	Checked	Date
Performed by		Page		Revision
Checked by		3 / 6		
Date		14/04/2022		

THERMAL LIMIT CURVE



Three Phase Induction Motor - Squirrel Cage

Customer :

Product line : NEMA Premium Efficiency Three-Phase
Product code : 13526433
Catalog # : 20009ET3GKD449T-W22

Performance : 460 V 60 Hz 8P

Rated current : 254 A	Moment of inertia (J)
LRC : 6.4	Duty cycle : Cont.(S1)
Rated torque : 1180 ft.lb	Insulation class : F
Locked rotor torque : 200 %	Service factor : 1.15
Breakdown torque : 220 %	Temperature rise : 80 K
Rated speed : 890 rpm	Design : A

Heating constant

Cooling constant

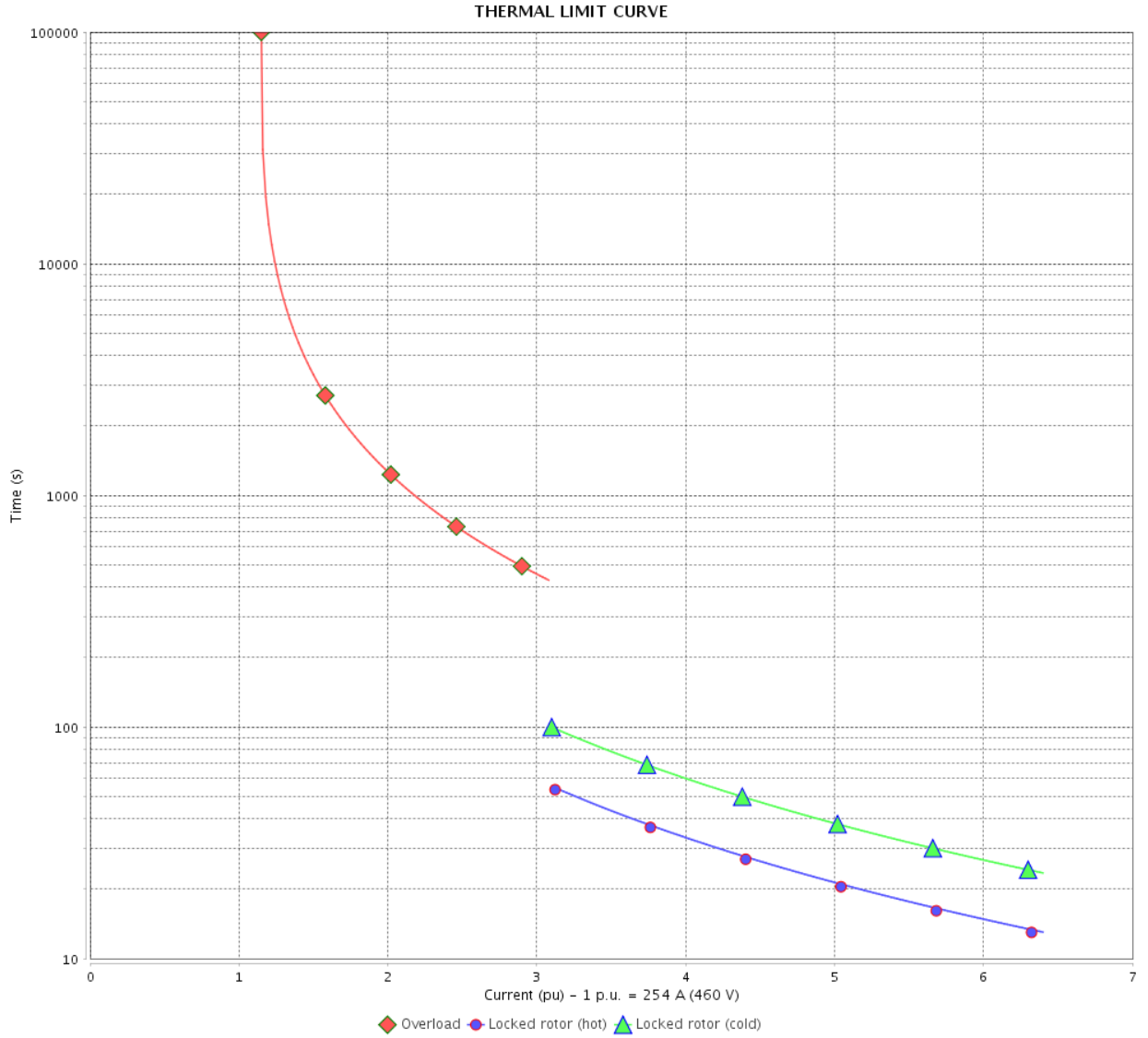
Rev.	Changes Summary	Performed	Checked	Date
Performed by				
Checked by			Page	Revision
Date	14/04/2022		4 / 6	

THERMAL LIMIT CURVE

Three Phase Induction Motor - Squirrel Cage



Customer : _____



Rev.	Changes Summary	Performed	Checked	Date
Performed by		Page 5 / 6		Revision
Checked by				
Date				

VFD OPERATION CURVE

Three Phase Induction Motor - Squirrel Cage



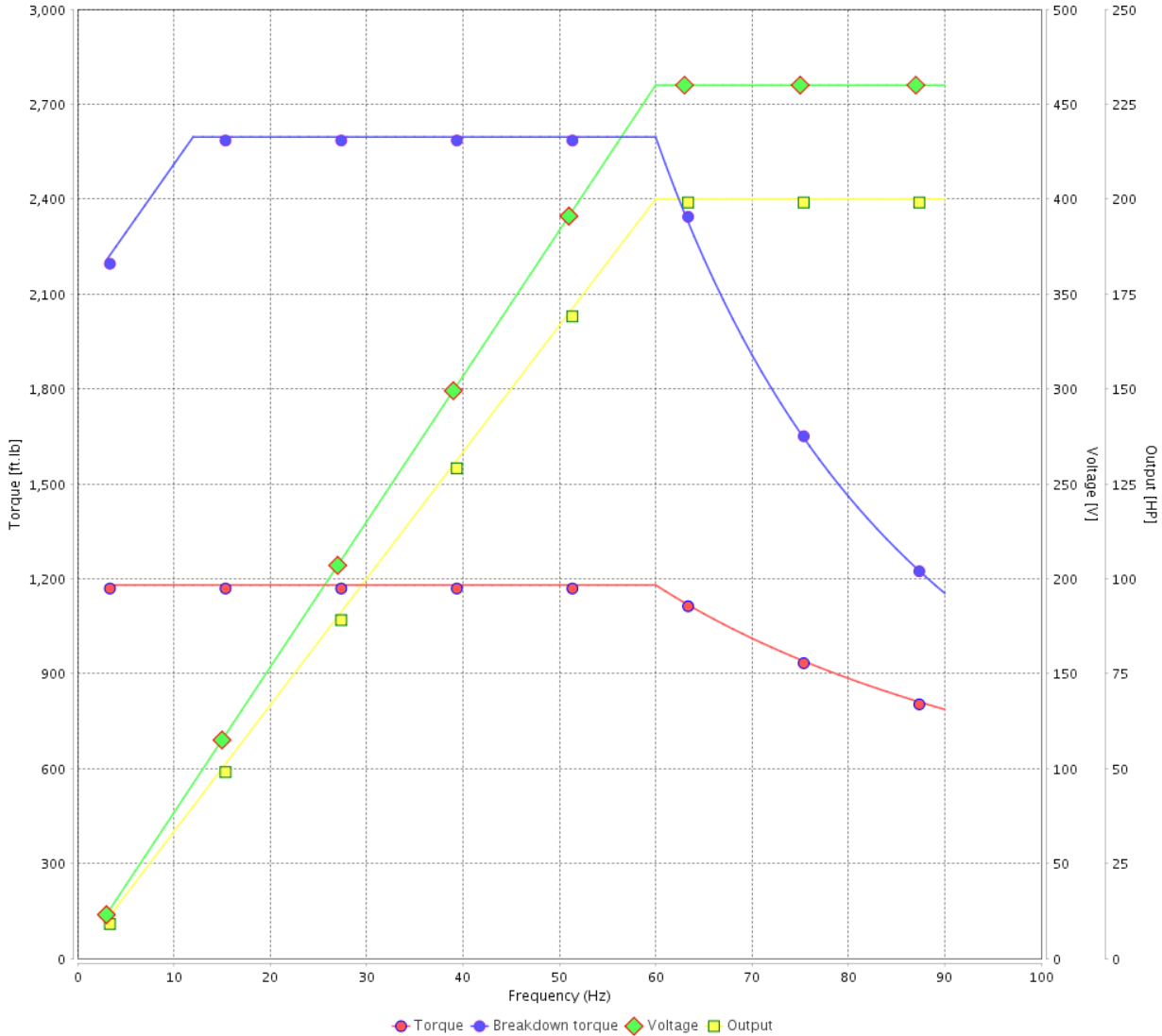
Customer :

Product line : NEMA Premium Efficiency Three-Phase

Product code : 13526433

Catalog # : 20009ET3GKD449T-W22

VFD OPERATION CURVE



Performance : 460 V 60 Hz 8P

Rated current : 254 A
 LRC : 6.4
 Rated torque : 1180 ft.lb
 Locked rotor torque : 200 %
 Breakdown torque : 220 %
 Rated speed : 890 rpm

Moment of inertia (J)
 Duty cycle : Cont.(S1)
 Insulation class : F
 Service factor : 1.15
 Temperature rise : 80 K
 Design : A

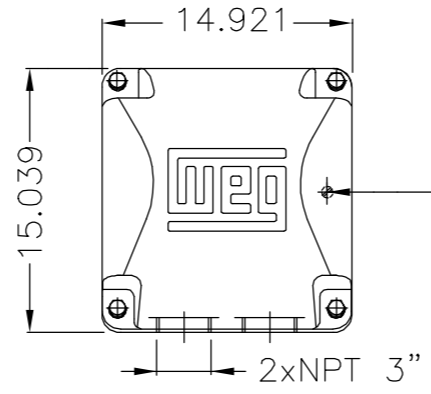
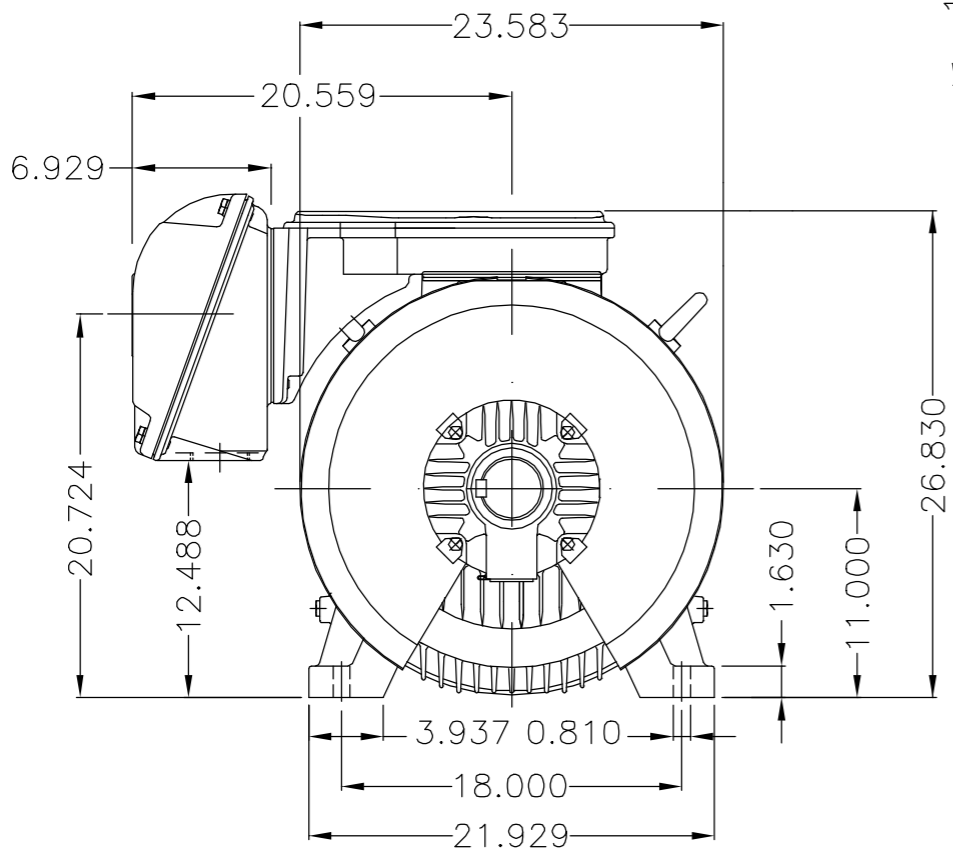
Rev.	Changes Summary	Performed	Checked	Date
Performed by			Page	Revision
Checked by				
Date				

EIXO/SHAFT	
PADRÃO/STANDARD	X
OPCIONAL/OPTIONAL	
ESPECIAL/SPECIAL	

Dimensões em polegada
Dimensions in inches

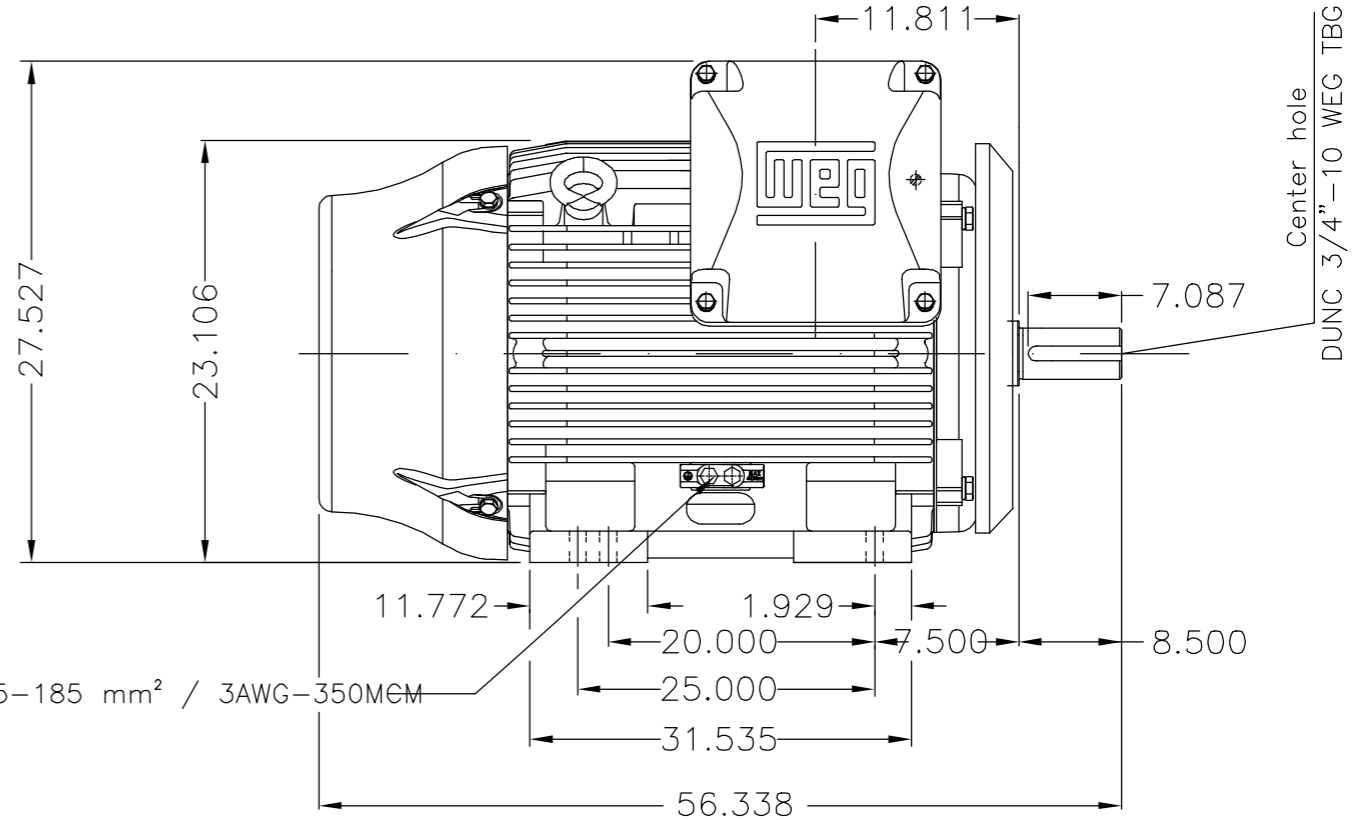
THIS IS AN UPDATED REVISION, THE PREVIOUS ONE MUST BE DISREGARDED.

A
B
C
D
E



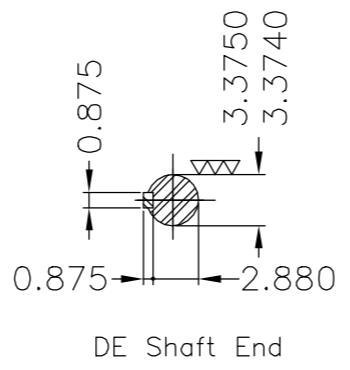
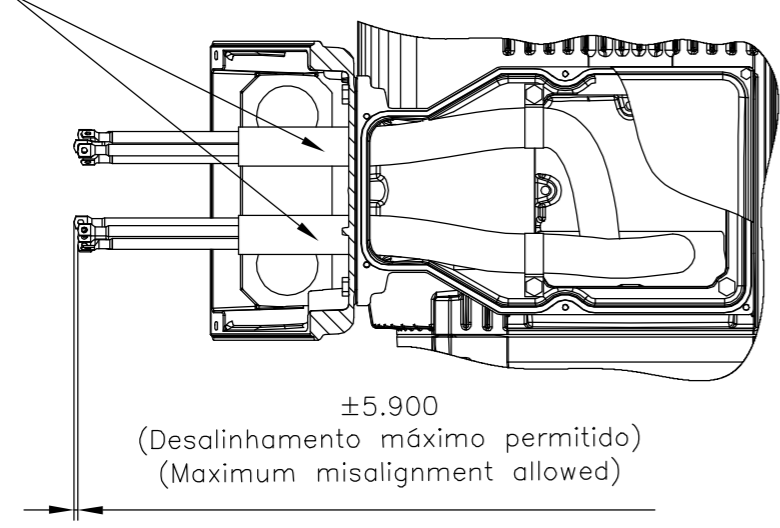
Main terminal box

Grounding for leads 35-70 mm² / 1-2/0 AWG



Grounding for leads 25-185 mm² / 3AWG-350MEM

Fixar o conduíte no suporte com abraçadeiras.
Fasten the conduit on support with cables ties.



DE Shaft End

Linha do motor: Crusher Duty / Motor purpose: Crusher Duty	
Rolamento dianteiro de rolos / DE roller bearing	
Conduíte para cabos no interior do suporte da caixa de ligação	
Cables conduit inside terminal box support	
Dispositivo de travamento de eixo / Shaft locking device	
Cor RAL 5009 / Color RAL 5009	
Plano de pintura 203A / Painting plan 203A	
Forma construtiva B3D / Mounting B3R(D)	
WEG EQUIPAMENTOS ELÉTRICOS S/A	

E	200 HP	08 Poles	60Hz	414658029
	300 HP	06 Poles	60Hz	414658029
	250 HP	06 Poles	60Hz	414658029
	350 HP	04 Poles	60Hz	414658029
	300 HP	04 Poles	60Hz	414658029

E	500001474636	RET. LINHAS DE POTÊNCIA INCORRETAS	DCARDOSO	SAORIN	SAORIN	09.07.2018	05		
D	500001331189	ADIC.NOTA CONDUITE/ADD NOTE CONDUIT	MENSOR	EANJOS	EANJOS	05.07.2017	04		
C	EXECUTED	GABRIELID	SUMMARY OF MODIFICATIONS		EXECUTED	CHECKED	RELEASED	DATE	VER
B	CHECKED	JMANENTE	THREE PHASE W22 MOTOR		10004923929				
A	RELEASED	JMANENTE	FRAME 447/9T IP55 TEFC		000 05				
	REL DT	09.05.2017	WMO	Jaragua do Sul	Product Engineering	SHEET	1 / 1		



UNCONTROLLED COPY
RELEASED
ZME A3

MADE IN BRAZIL
13526433



NEMA
Premium
W22



FOR SAFE AREA
Mod.TE1BFOXON
CC029A



Class I, Div 2, Gr A, B, C and D - T3
Class I, Zone 2, IIC - T3
Class II, Div 2, Gr F and G - T3C
For use on PWM: Gr. A, B, C, D and F,
VT 1000:1, CT 20:1, 1.00SF - T3

MODEL 20009ET3GKD449T-W22

Inverter Duty Motor
Severe Duty

PH3 60Hz Fr. 447/9T 1000m.a.s.l. IP55 TEFC 3074lb

V 460

A 254

HP 200

kW 150

SF 1.15

SFA 292

RPM 890

PF 0.78

AMB 40°C

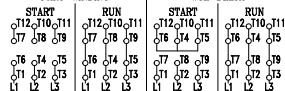
INS cl. F DT80K

NEMA NOM EFF 95.0%

DUTY CONT.

DES A Code H

PART-WINDING



→ NU-322-C3 (60g)

→ 6319-C3 (45g)



MOBIL POLYREX EM (13000h)

