

TORQUE AND CURRENT VS SPEED CURVE

Three Phase Induction Motor - Squirrel Cage



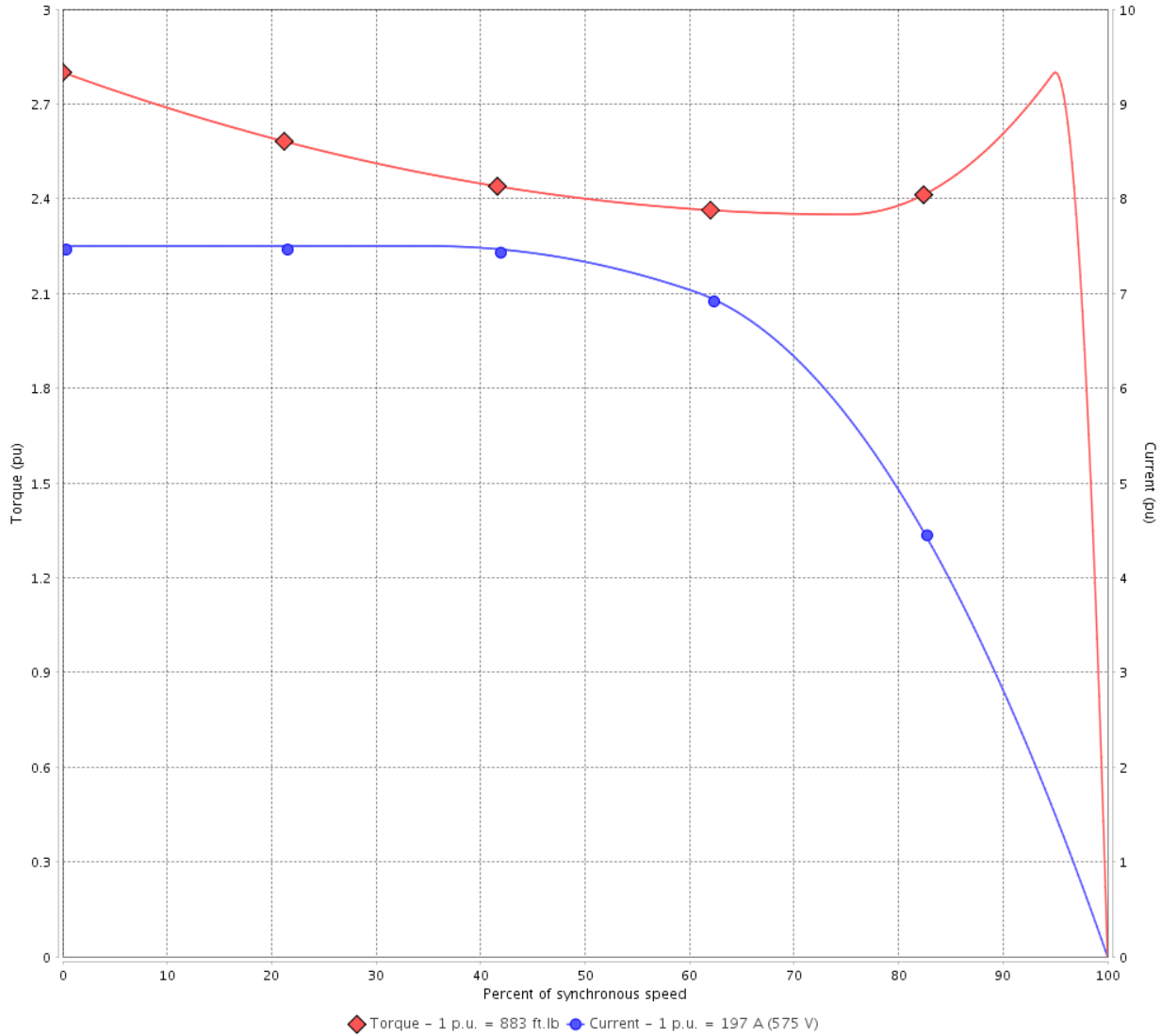
Customer :

Product line : NEMA Premium Efficiency Three-Phase

Product code : 11537013

Catalog # : 20012ET3HKD505Z-W22

TORQUE AND CURRENT VS SPEED CURVE



Performance : 575 V 60 Hz 6P

Rated current	: 197 A	Moment of inertia (J)	
LRC	: 7.5	Duty cycle	: Cont.(S1)
Rated torque	: 883 ft.lb	Insulation class	: F
Locked rotor torque	: 280 %	Service factor	: 1.15
Breakdown torque	: 280 %	Temperature rise	: 80 K
Rated speed	: 1190 rpm	Design	: A

Locked rotor time : 32s (cold) 18s (hot)

Rev.	Changes Summary	Performed	Checked	Date
Performed by			Page 2 / 6	Revision
Checked by				
Date	14/04/2022			

LOAD PERFORMANCE CURVE

Three Phase Induction Motor - Squirrel Cage

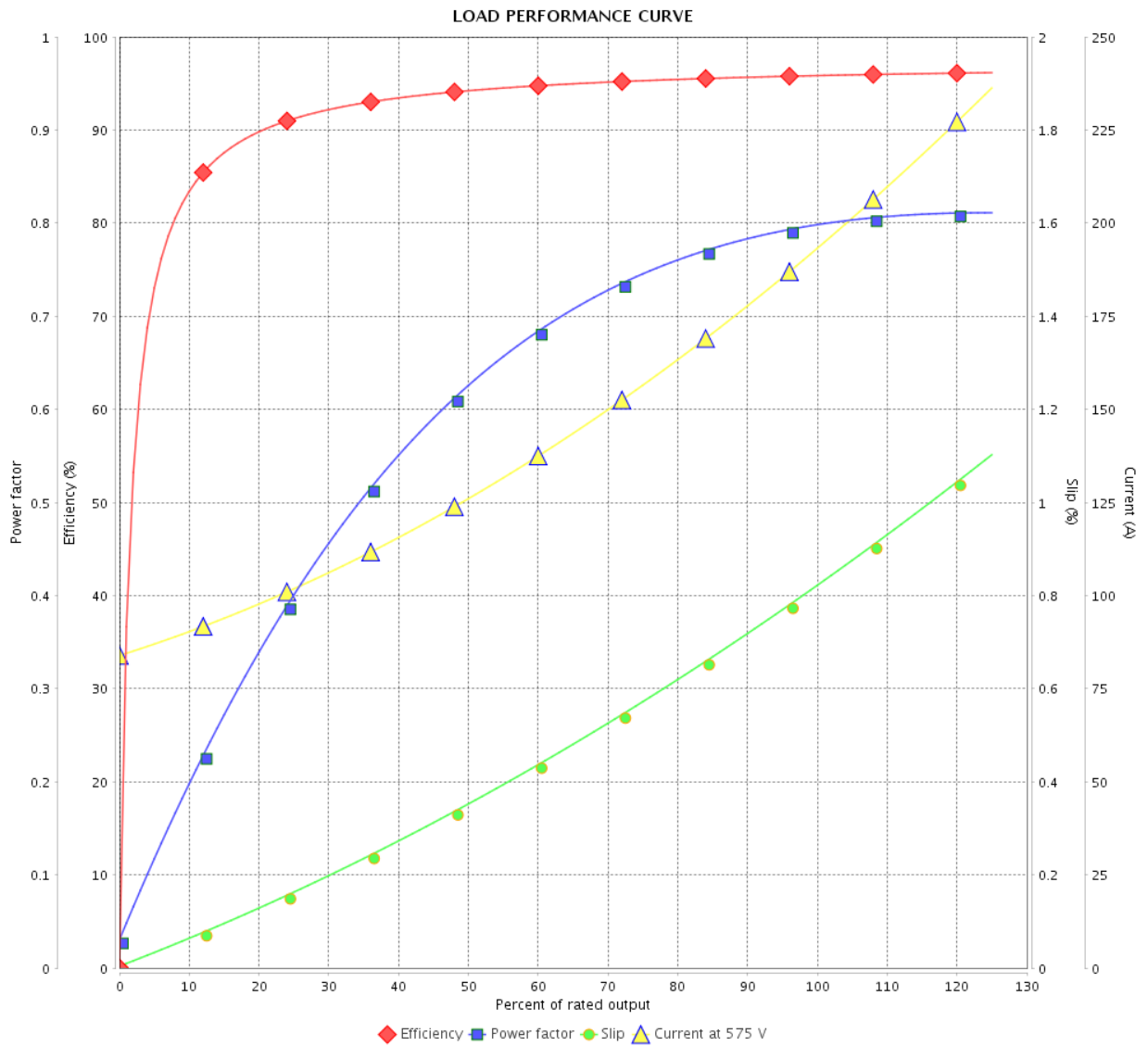


Customer : _____

Product line : NEMA Premium Efficiency Three-Phase

Product code : 11537013

Catalog # : 20012ET3HKD505Z-W22



Performance : 575 V 60 Hz 6P

Rated current : 197 A
 LRC : 7.5
 Rated torque : 883 ft.lb
 Locked rotor torque : 280 %
 Breakdown torque : 280 %
 Rated speed : 1190 rpm

Moment of inertia (J)
 Duty cycle : Cont.(S1)
 Insulation class : F
 Service factor : 1.15
 Temperature rise : 80 K
 Design : A

Rev.	Changes Summary	Performed	Checked	Date
Performed by		Page		Revision
Checked by		3 / 6		
Date	14/04/2022			

THERMAL LIMIT CURVE



Three Phase Induction Motor - Squirrel Cage

Customer :

Product line : NEMA Premium Efficiency Three-Phase
Product code : 11537013
Catalog # : 20012ET3HKD505Z-W22

Performance : 575 V 60 Hz 6P

Rated current : 197 A	Moment of inertia (J)
LRC : 7.5	Duty cycle : Cont.(S1)
Rated torque : 883 ft.lb	Insulation class : F
Locked rotor torque : 280 %	Service factor : 1.15
Breakdown torque : 280 %	Temperature rise : 80 K
Rated speed : 1190 rpm	Design : A

Heating constant

Cooling constant

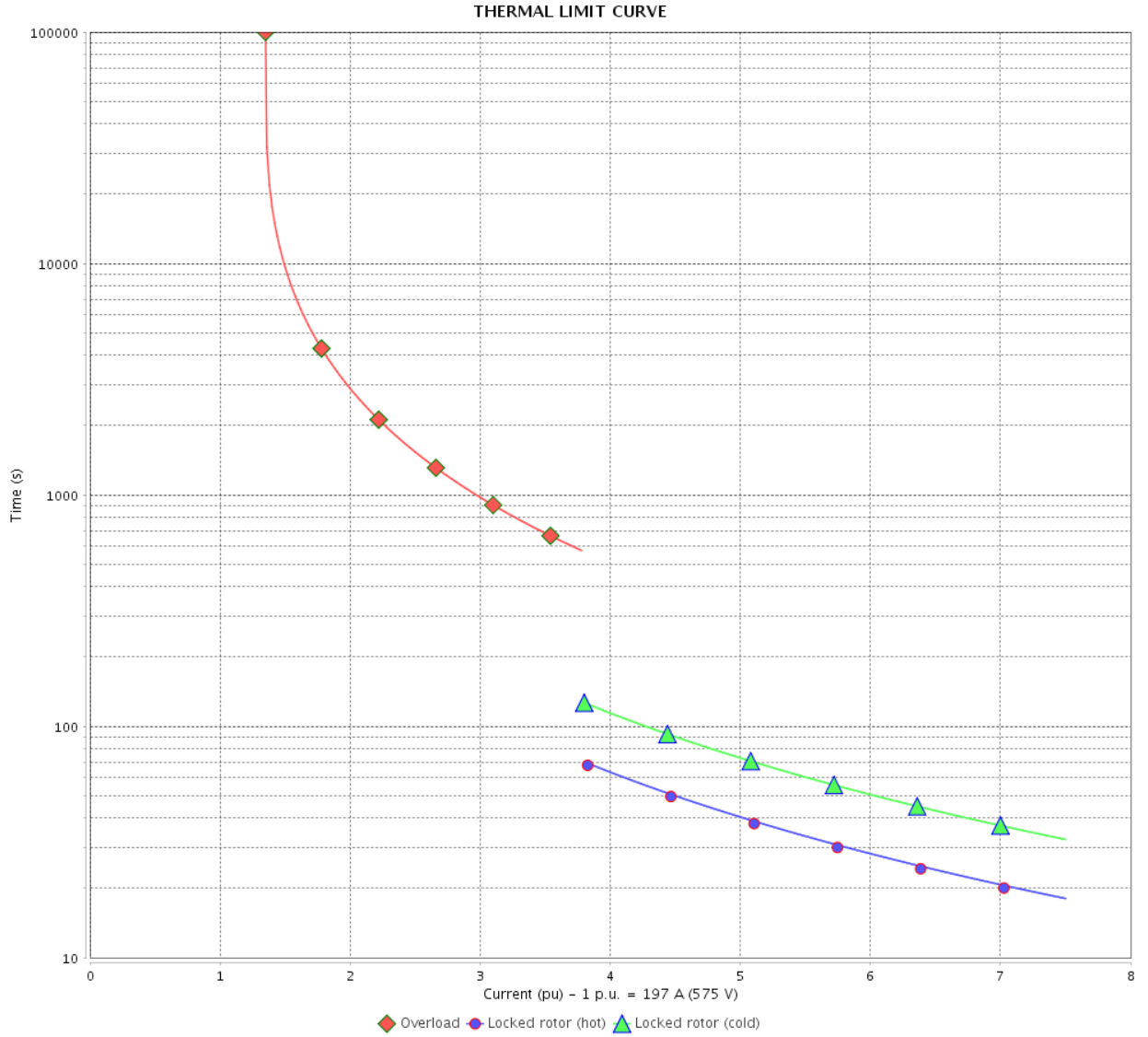
Rev.	Changes Summary	Performed	Checked	Date
Performed by				
Checked by			Page	Revision
Date	14/04/2022		4 / 6	

THERMAL LIMIT CURVE

Three Phase Induction Motor - Squirrel Cage



Customer : _____



Rev.	Changes Summary	Performed	Checked	Date
Performed by		Page 5 / 6		Revision
Checked by				
Date				

VFD OPERATION CURVE

Three Phase Induction Motor - Squirrel Cage

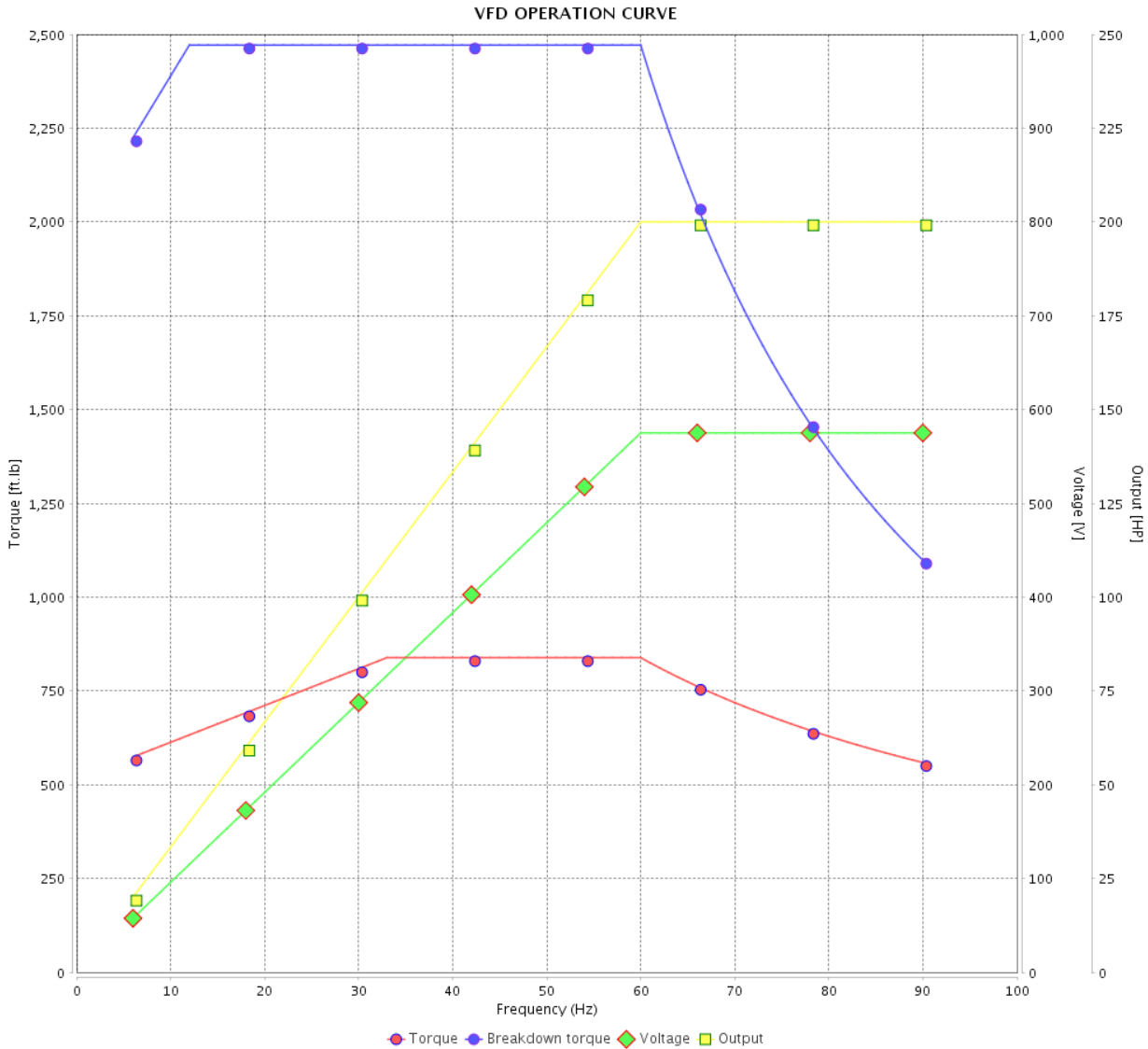


Customer : _____

Product line : NEMA Premium Efficiency Three-Phase

Product code : 11537013

Catalog # : 20012ET3HKD505Z-W22



Performance : 575 V 60 Hz 6P

Rated current : 197 A
 LRC : 7.5
 Rated torque : 883 ft.lb
 Locked rotor torque : 280 %
 Breakdown torque : 280 %
 Rated speed : 1190 rpm

Moment of inertia (J)
 Duty cycle : Cont.(S1)
 Insulation class : F
 Service factor : 1.15
 Temperature rise : 80 K
 Design : A

Rev.	Changes Summary	Performed	Checked	Date
Performed by			Page 6 / 6	Revision
Checked by				
Date	14/04/2022			

No reproduction of this drawing is allowed without written permission of WEG Motores

EIXO	
PADRÃO	
OPCIONAL	
ESPECIAL	X

Dimensões em polegada
Dimensions in inch

CERTIFIED WEG MOTORES

Certified document.
Not subject to changes.

THIS IS AN UPDATED REVISION, THE PREVIOUS ONE MUST BE DISREGARDED.

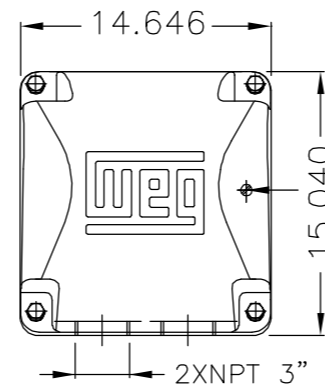
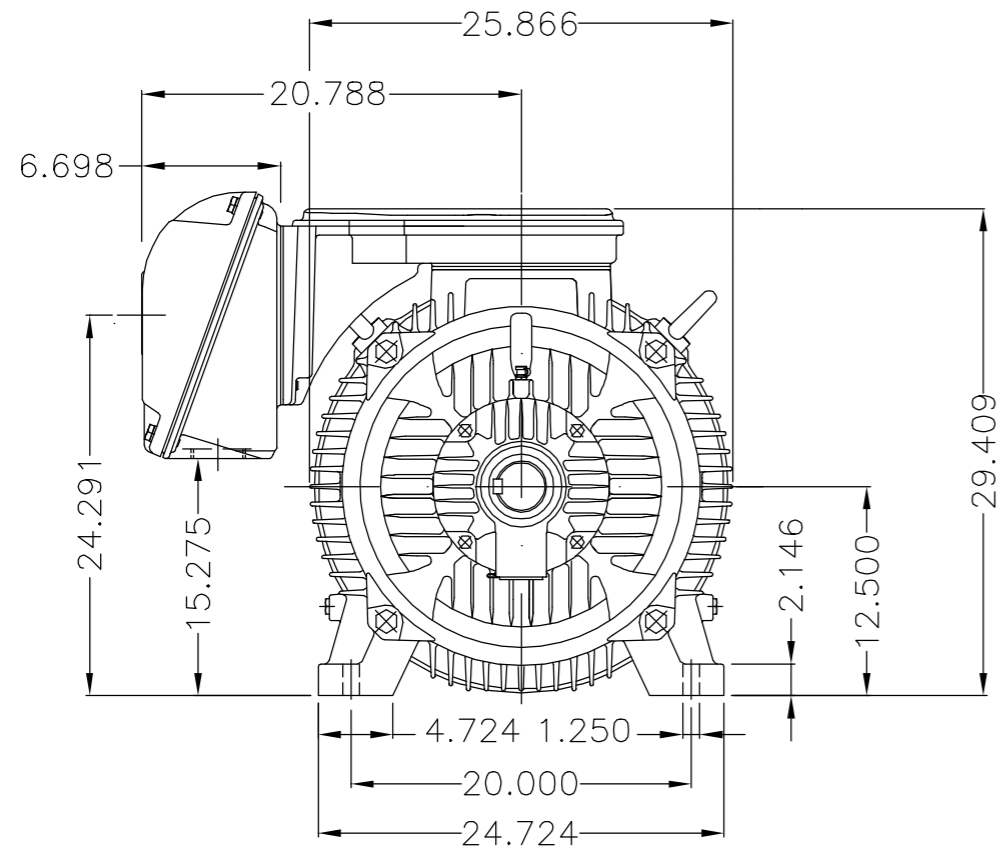
A

B

C

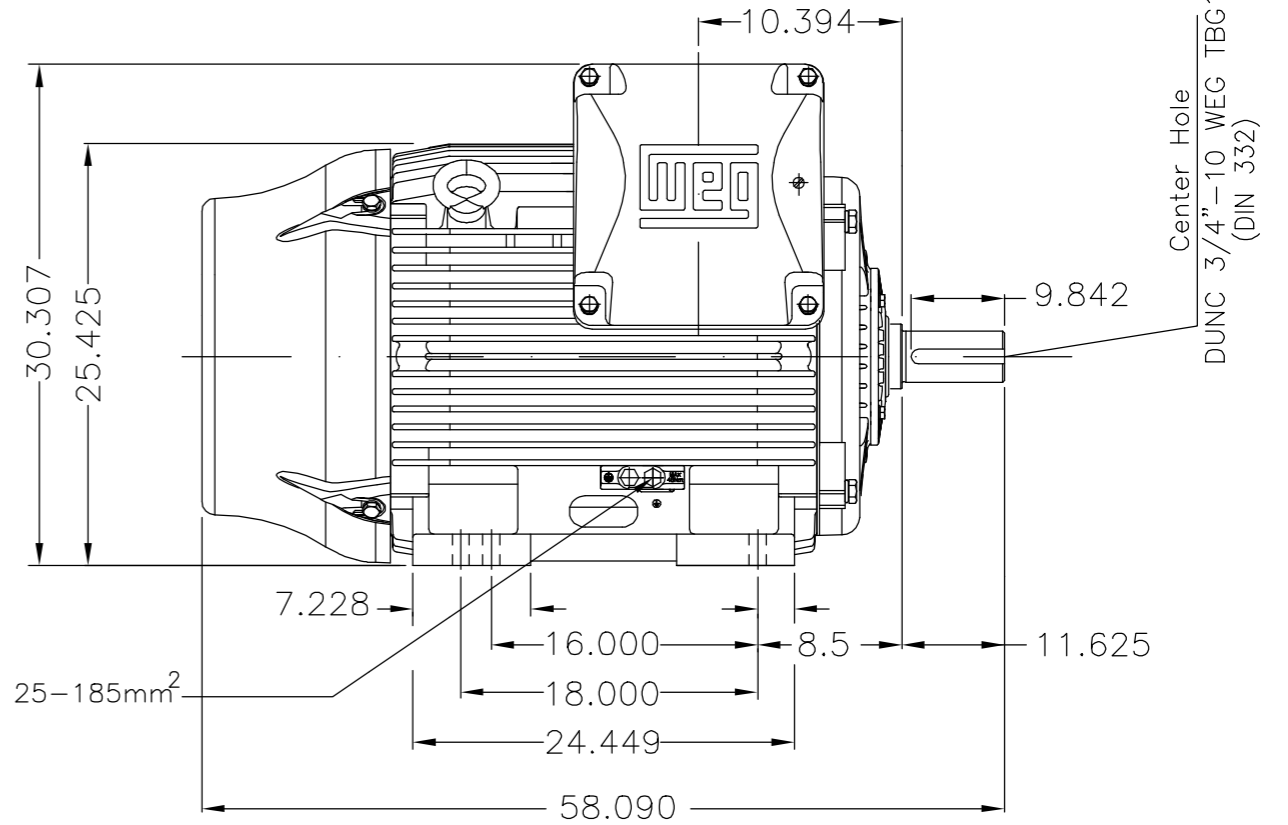
D

E



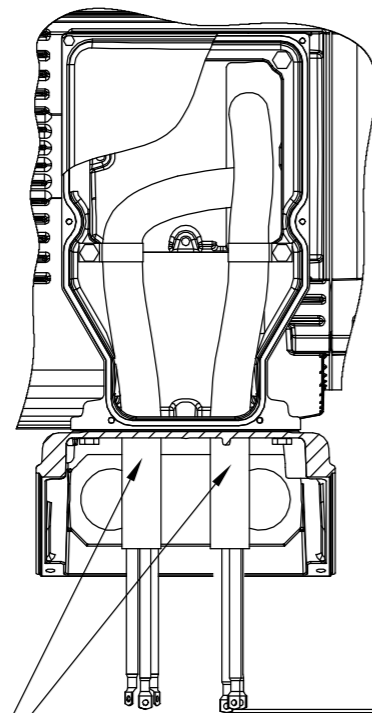
Main terminal box

Grounding for leads 35-70mm²

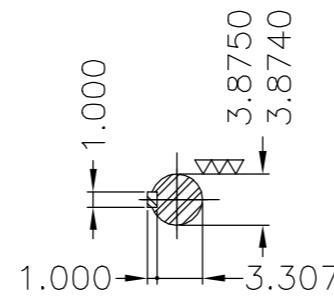


Grounding for leads 25-185mm²

Fixar o conduto no suporte com abraçadeiras.
Fasten the conduit on support with cables ties.



±5.900
(Desalinamento máximo permitido)
(Maximum misalignment allowed)



DE Shaft End

Categoria A / Design A						
Linha do motor: Crusher Duty / Motor purpose: Crusher Duty						
Rolamento dianteiro de rolos / DE roller bearing						
Rolamento dianteiro de rolos NU-322 / NU-322 DE roller bearing						
Conduite para cabos no interior do suporte da caixa de ligação						
Cables conduit inside terminal box support						
Dispositivo de travamento de eixo / Shaft locking device						
Plano de pintura 203A / Painting plan 203A						
Forma construtiva B3D / Mounting B3R(D)						
WEG CORP.LOGISTICS - MILWAUKIE						

500001570109		ALTERADO CONFORME CLAIM 415380108	PKREYSSIG	FRANCINES	FRANCINES	13.03.2019	05
500001331189		ADIC.NOTA CONDUITE/ADD NOTE CONDUIT	MENSOR	EANJOS	EANJOS	05.07.2017	04
ECM	LOC	SUMMARY OF MODIFICATIONS	EXECUTED	CHECKED	RELEASED	DATE	VER
EXECUTED	SCARMAGNANI	THREE PHASE W22 MOTOR - NEMA PREMIUM EFF FRAME 504/5T IP55	10000964926				
CHECKED	ADRIANAP		000 05				
RELEASED	ADRIANAP						
REL DT	13.09.2010	WMO	JARAGUÁ DO SUL	ENG. MOTORES INDUSTRIAIS	SHEET	1 / 1	

200 HP 06 Poles 60Hz 405281761/02 ELET



NEMA
Premium[®]
W22



FOR SAFE AREA
Mod.TE1BFOXON
CC029A



Class I, Div 2, Gr A, B, C and D - T3
Class I, Zone 2, IIC - T3
Class II, Div 2, Gr F and G - T3C
For use on PWM: Gr. A, B, C, D and F,
VT 1000:1, CT 20:1, 1.00SF - T3

HT200506NPRBW22505Z

Inverter Duty Motor
Severe Duty

PH3 60Hz Fr. 504/5T 1000m.a.s.l. IP55 TEFC 2688lb

V 575

A 197

HP 200

kW 150

SF 1.15

SFA 227

RPM 1190

PF 0.80

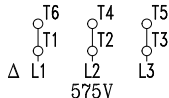
AMB 40°C

INS cl. F DT80K

NEMA NOM EFF 95.8%

DUTY CONT.

DES A Code J



→ NU-322-C3 (60g)

→ 6316-C3 (34g)



MOBIL POLYREX EM (7000h)



MADE IN BRAZIL
11537013