

DATA SHEET

Three Phase Induction Motor - Squirrel Cage



Customer : _____

Space heater information

Voltage: 200 - 240 V

Rev.	Changes Summary	Performed	Checked	Date
Performed by				
Checked by			Page	Revision
Date	13/04/2022		2 / 7	

TORQUE AND CURRENT VS SPEED CURVE



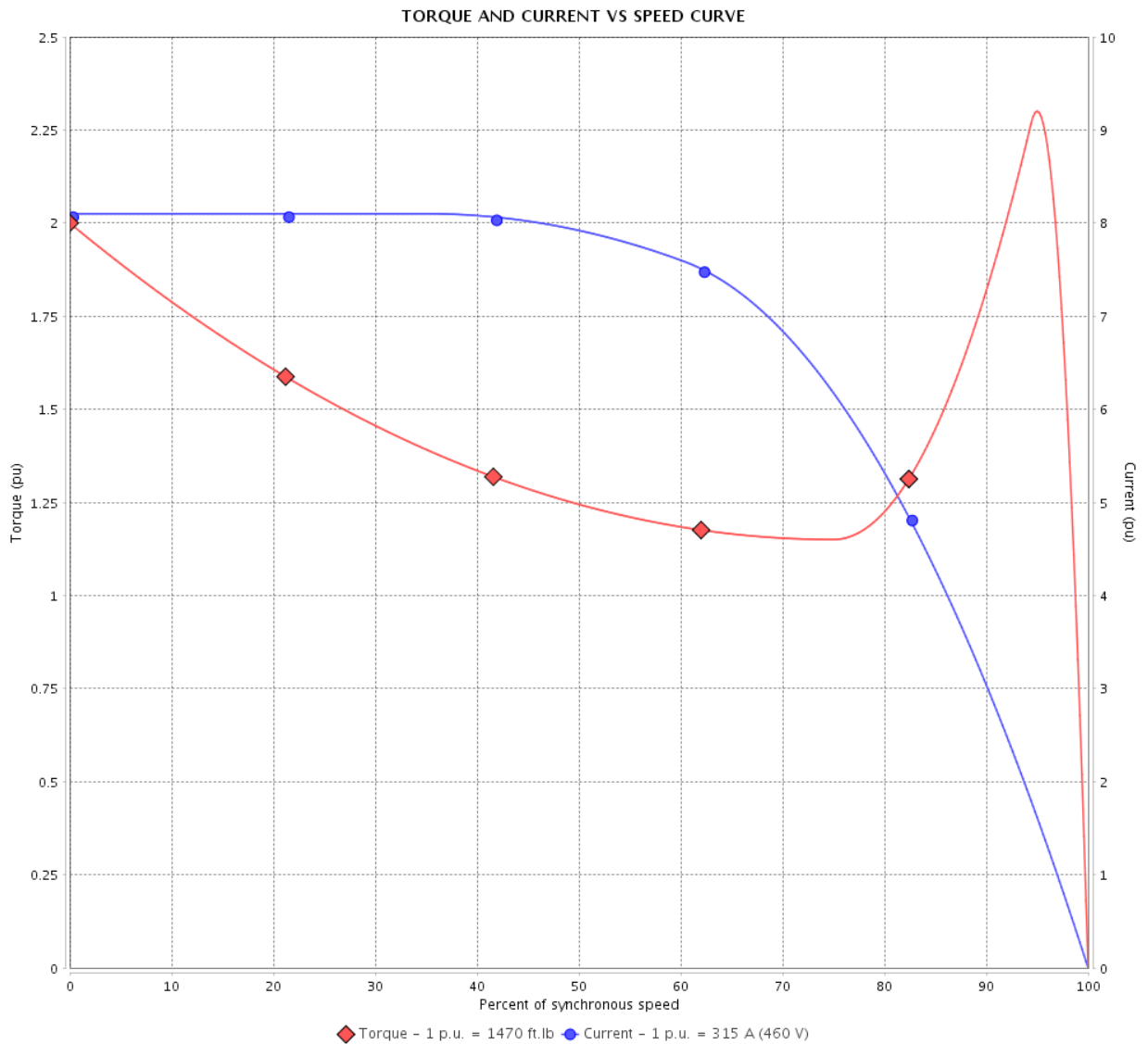
Three Phase Induction Motor - Squirrel Cage

Customer :

Product line : NEMA Premium Efficiency Three-Phase

Product code : 13500595

Catalog # : 25009ET3GKD586/7-W22



Performance : 460 V 60 Hz 8P

Rated current : 315 A
 LRC : 8.1
 Rated torque : 1470 ft.lb
 Locked rotor torque : 200 %
 Breakdown torque : 229 %
 Rated speed : 895 rpm

Moment of inertia (J)
 Duty cycle : Cont.(S1)
 Insulation class : F
 Service factor : 1.15
 Temperature rise : 80 K
 Design : A

Locked rotor time : 72s (cold) 40s (hot)

Rev.	Changes Summary	Performed	Checked	Date
Performed by			Page 3 / 7	Revision
Checked by				
Date	13/04/2022			

LOAD PERFORMANCE CURVE

Three Phase Induction Motor - Squirrel Cage

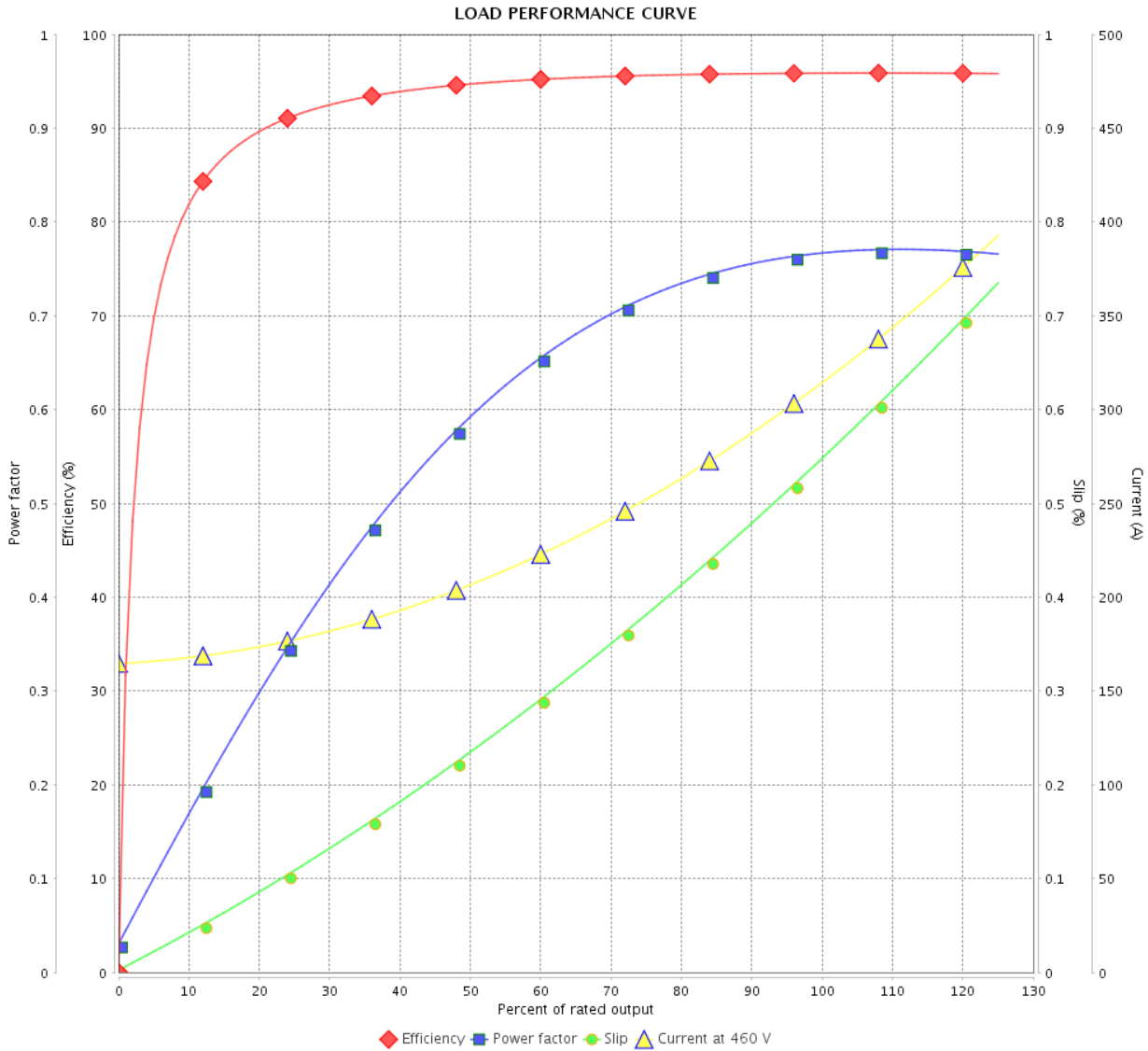


Customer :

Product line : NEMA Premium Efficiency Three-Phase

Product code : 13500595

Catalog # : 25009ET3GKD586/7-W22



Performance : 460 V 60 Hz 8P

Rated current : 315 A
 LRC : 8.1
 Rated torque : 1470 ft.lb
 Locked rotor torque : 200 %
 Breakdown torque : 229 %
 Rated speed : 895 rpm

Moment of inertia (J)
 Duty cycle : Cont.(S1)
 Insulation class : F
 Service factor : 1.15
 Temperature rise : 80 K
 Design : A

Rev.	Changes Summary	Performed	Checked	Date
Performed by		Page		Revision
Checked by		4 / 7		
Date	13/04/2022			

THERMAL LIMIT CURVE



Three Phase Induction Motor - Squirrel Cage

Customer :

Product line : NEMA Premium Efficiency Three-Phase
 Product code : 13500595
 Catalog # : 25009ET3GKD586/7-W22

Performance : 460 V 60 Hz 8P

Rated current : 315 A	Moment of inertia (J)
LRC : 8.1	Duty cycle : Cont.(S1)
Rated torque : 1470 ft.lb	Insulation class : F
Locked rotor torque : 200 %	Service factor : 1.15
Breakdown torque : 229 %	Temperature rise : 80 K
Rated speed : 895 rpm	Design : A

Heating constant

Cooling constant

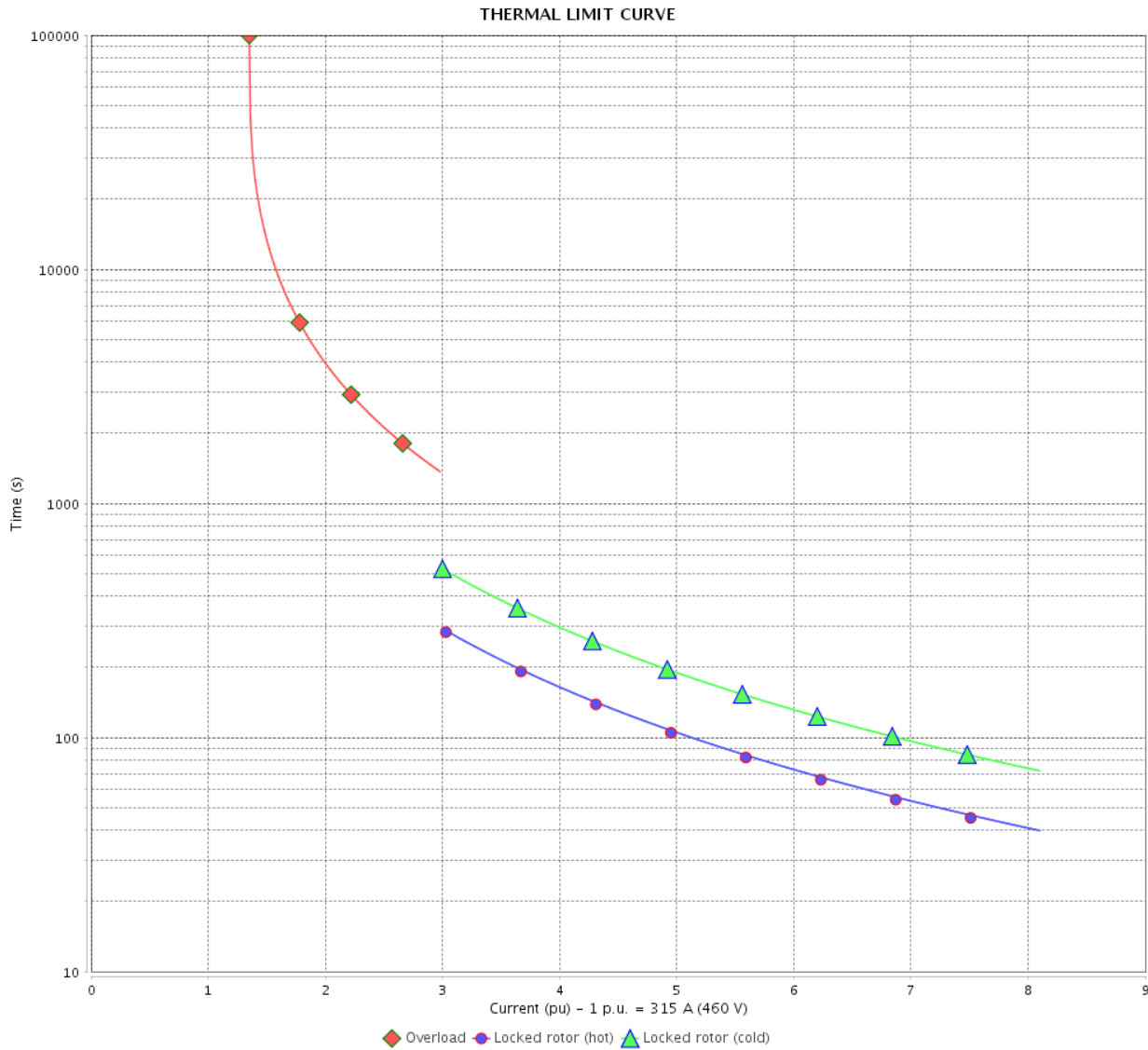
Rev.	Changes Summary	Performed	Checked	Date
Performed by			Page 5 / 7	Revision
Checked by				
Date	13/04/2022			

THERMAL LIMIT CURVE

Three Phase Induction Motor - Squirrel Cage



Customer : _____



Rev.	Changes Summary	Performed	Checked	Date
Performed by		Page 6 / 7		Revision
Checked by				
Date				

VFD OPERATION CURVE

Three Phase Induction Motor - Squirrel Cage

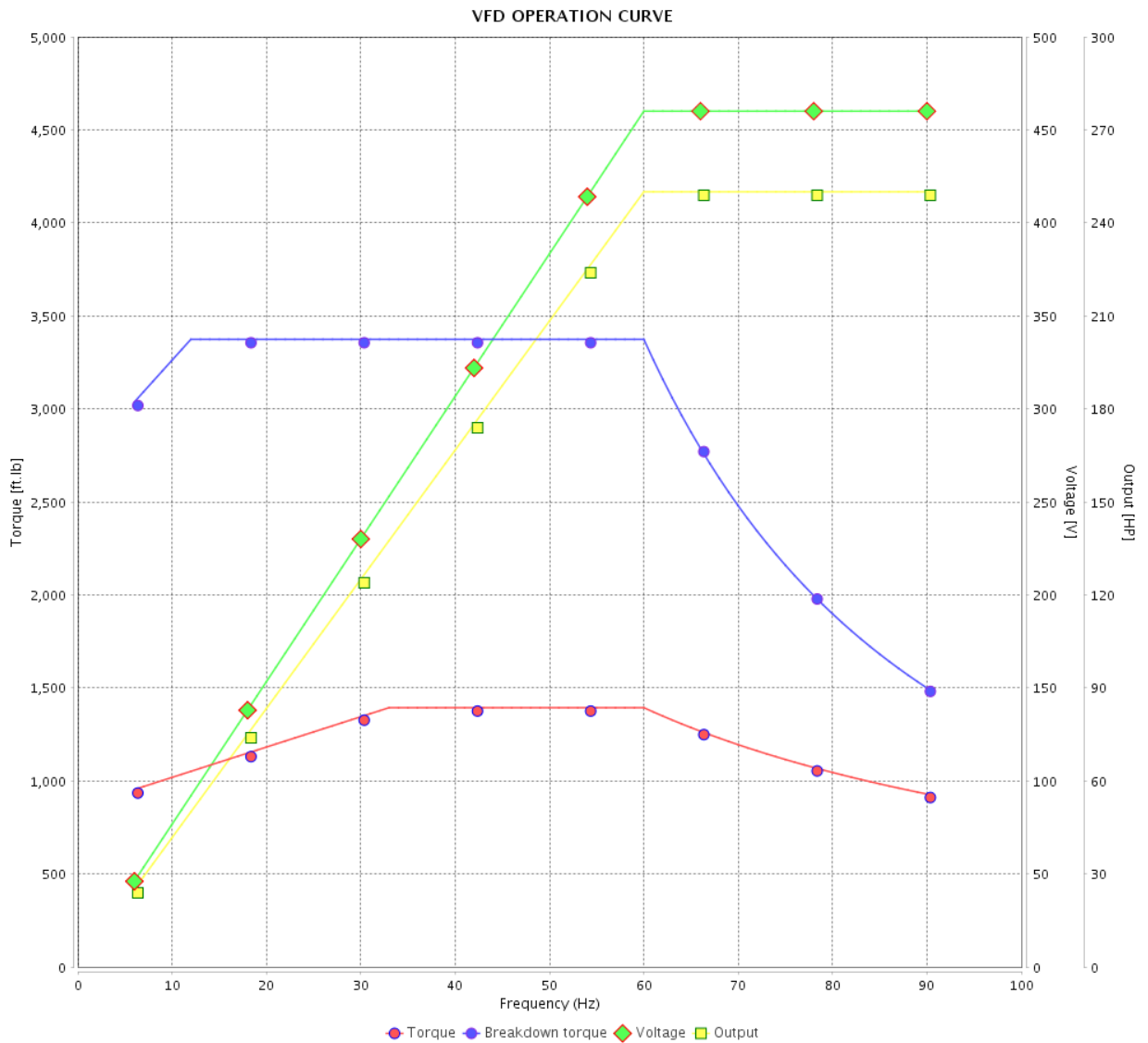


Customer : _____

Product line : NEMA Premium Efficiency Three-Phase

Product code : 13500595

Catalog # : 25009ET3GKD586/7-W22



Performance : 460 V 60 Hz 8P

Rated current : 315 A
 LRC : 8.1
 Rated torque : 1470 ft.lb
 Locked rotor torque : 200 %
 Breakdown torque : 229 %
 Rated speed : 895 rpm

Moment of inertia (J)
 Duty cycle : Cont.(S1)
 Insulation class : F
 Service factor : 1.15
 Temperature rise : 80 K
 Design : A

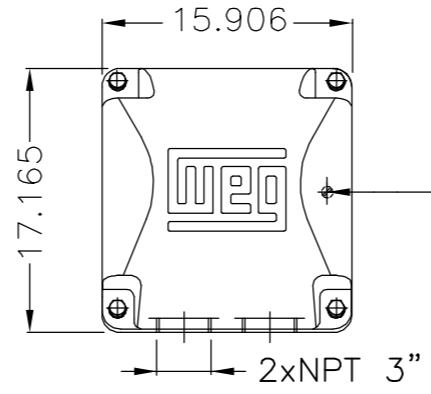
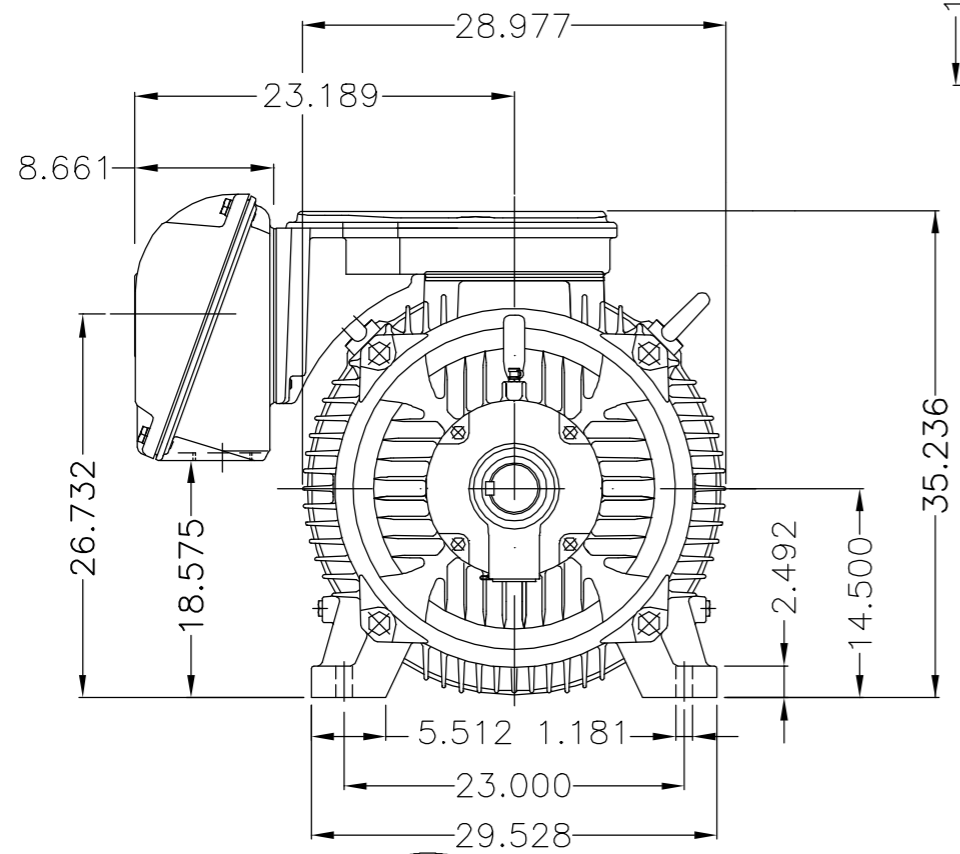
Rev.	Changes Summary	Performed	Checked	Date
Performed by				Page 7 / 7
Checked by				
Date	13/04/2022			

EIXO/SHAFT	
PADRÃO/STANDARD	X
OPCIONAL/OPTIONAL	
ESPECIAL/SPECIAL	

Dimensões em polegada
Dimensions in inches

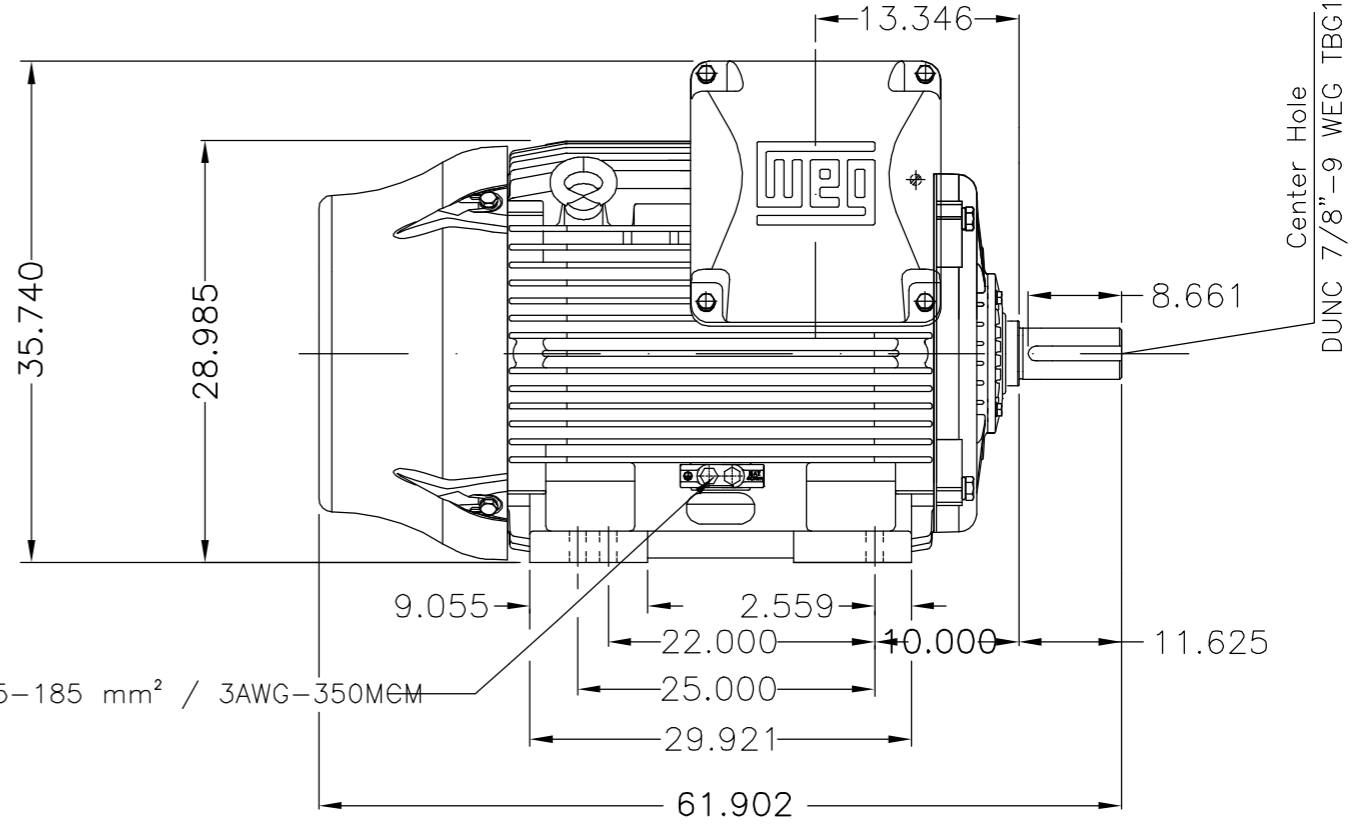
THIS IS AN UPDATED REVISION, THE PREVIOUS ONE MUST BE DISREGARDED.

A
B
C
D
E



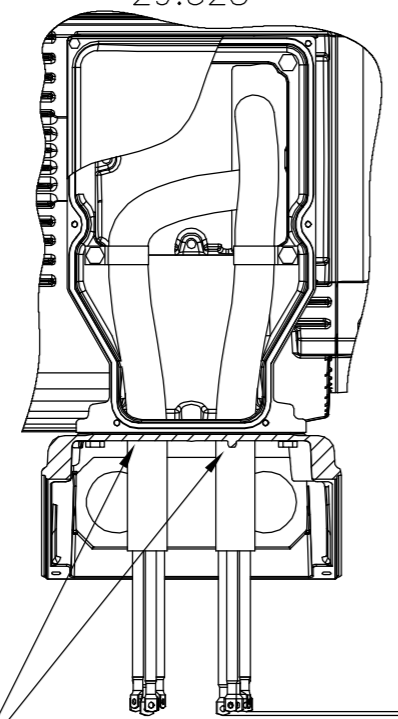
Main terminal box

Grounding for leads 35-120 mm² / 1-4/0 AWG

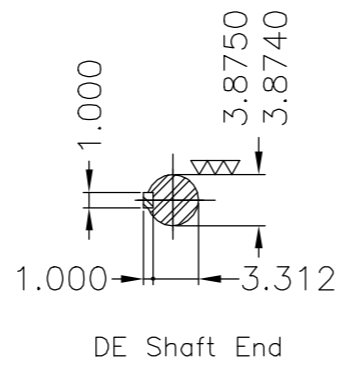


Grounding for leads 25-185 mm² / 3AWG-350MEM

Fixar o conduto no suporte com abraçadeiras.
Fasten the conduit on support with cables ties.



±5.900
(Desalinhamento máximo permitido)
(Maximum misalignment allowed)



DE Shaft End

Conduite para cabos no interior do suporte da caixa de ligação Cables conduit inside terminal box support									
Rolamento dianteiro de rolos / DE roller bearing									
Dispositivo de travamento de eixo / Shaft locking device									
Linha do motor: Crusher Duty / Motor purpose: Crusher Duty									
Tampa traseira com mancal eletricamente isolado NDE endshield with electrically insulated bearing hub									
Cor RAL 5009 / Color RAL 5009									
Plano de pintura 203A / Painting plan 203A									
Forma construtiva B3D / Mounting B3R(D)									
WEG EQUIPAMENTOS ELÉTRICOS S/A									

E	300 HP	08 Poles	60Hz	414658029
	250 HP	08 Poles	60Hz	414668751
	400 HP	06 Poles	60Hz	414658029
	350 HP	06 Poles	60Hz	414658029
	300 HP	06 Poles	60Hz	414658029

E	500001331189	ADIC.NOTA CONDUITE/ADD NOTE CONDUIT	MENSOR	EANJOS	05.07.2017	04			
D	500001323616	ALTERADO CONFORME CDP 414658625	MENSOR	JMANENTE	20.06.2017	03			
C	EXECUTED	GABRIELID	SUMMARY OF MODIFICATIONS		EXECUTED	CHECKED	RELEASED	DATE	VER
B	CHECKED		THREE PHASE W22 MOTOR		10004924169				
A	RELEASED	JMANENTE	FRAME 586/7T IP55 TEFC		000 04				
	REL DT	09.05.2017	WMO	Jaragua do Sul	Product Engineering	SHEET 1 / 1			



MADE IN BRAZIL
13500595



NEMA
Premium
W22



FOR SAFE AREA
Mod.TE1BFOXON
CC029A

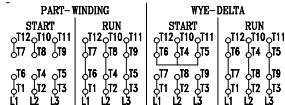


Class I, Div 2, Gr A, B, C and D - T3
Class I, Zone 2, IIC - T3
Class II, Div 2, Gr F and G - T3C
For use on PWM: Gr. A, B, C and D,
VT 1000:1, CT 20:1, 1.00SF - T2B

MODEL 25009ET3GKD586/7-W22

Inverter Duty Motor
Severe Duty

PH3	60Hz	Fr. 586/7T	1000m.a.s.l.	IP55	TEFC	4111lb		
V	460			A	315			
HP	250			kW	185			
SF	1.15			SFA	362			
RPM	895			PF	0.77			
AMB	40°C			INS cl.	F DT80K	NEMA NOM EFF	95.8%	
DUTY CONT.				DES A	Code K			



→ NU-322-C3 (60g)

→ 6319-C3 (45g)



MOBIL POLYREX EM (13000h)

