

DATA SHEET



Three Phase Induction Motor - Squirrel Cage

Customer	:			
Product line	: NEMA Premium Efficiency Three-Phase		Product code :	13500597
			Catalog # :	25012ET3GKD580Z-W22
Frame	: 586/7TZ		Locked rotor time	: 54s (cold) 30s (hot)
Output	: 250 HP (185 kW)		Temperature rise	: 80 K
Poles	: 6		Duty cycle	: Cont.(S1)
Frequency	: 60 Hz		Ambient temperature	: -20°C to +40°C
Rated voltage	: 460 V		Altitude	: 1000 m.a.s.l.
Rated current	: 299 A		Protection degree	: IP55
L. R. Amperes	: 1824 A		Cooling method	: IC411 - TEFC
LRC	: 6.1x(Code G)		Mounting	: F-1
No load current	: 128 A		Rotation ¹	: Both (CW and CCW)
Rated speed	: 1193 rpm		Noise level ²	: 77.0 dB(A)
Slip	: 0.58 %		Starting method	: Direct On Line
Rated torque	: 1100 ft.lb		Approx. weight ³	: 3206 lb
Locked rotor torque	: 210 %			
Breakdown torque	: 229 %			
Insulation class	: F			
Service factor	: 1.15			
Design	: A			
Output	25%	50%	75%	100%
Efficiency (%)	0.000	95.0	95.4	95.8
Power Factor	0.00	0.68	0.77	0.81
	Foundation loads			
			Max. traction	: 3677 lb
			Max. compression	: 6883 lb
		<u>Drive end</u>	<u>Non drive end</u>	
Bearing type	:	NU-324 C3	6319 C3	
Sealing	:	Taconite Labyrinth	Taconite Labyrinth	
Lubrication interval	:	6000 h	13000 h	
Lubricant amount	:	72 g	45 g	
Lubricant type	:	Mobil Polyrex EM		
Notes				
This revision replaces and cancel the previous one, which must be eliminated. (1) Looking the motor from the shaft end. (2) Measured at 1m and with tolerance of +3dB(A). (3) Approximate weight subject to changes after manufacturing process. (4) At 100% of full load.			These are average values based on tests with sinusoidal power supply, subject to the tolerances stipulated in NEMA MG-1.	
Rev.	Changes Summary		Performed	Checked
Performed by			Page	Revision
Checked by				
Date	13/04/2022		1 / 7	

DATA SHEET

Three Phase Induction Motor - Squirrel Cage



Customer : _____

Thermal protection

ID	Application	Type	Quantity	Sensing Temperature
1	Winding	Thermostat - 2 wires	1 x Phase	155 °C

Space heater information

Voltage: 200 - 240 V

Rev.	Changes Summary	Performed	Checked	Date
Performed by				
Checked by				
Date	13/04/2022		Page 2 / 7	Revision

TORQUE AND CURRENT VS SPEED CURVE



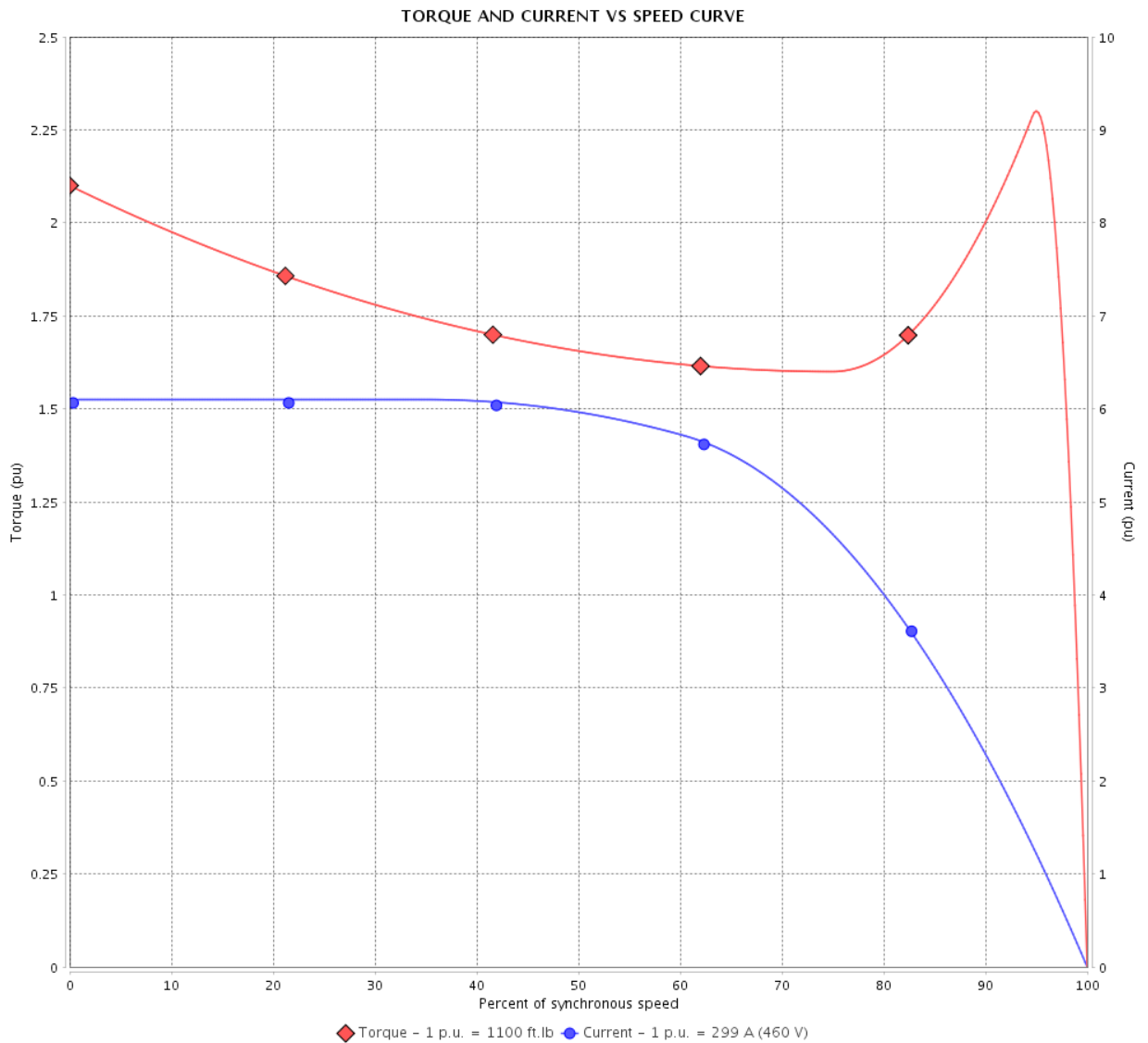
Three Phase Induction Motor - Squirrel Cage

Customer :

Product line : NEMA Premium Efficiency Three-Phase

Product code : 13500597

Catalog # : 25012ET3GKD580Z-W22



Performance : 460 V 60 Hz 6P

Rated current : 299 A
 LRC : 6.1
 Rated torque : 1100 ft.lb
 Locked rotor torque : 210 %
 Breakdown torque : 229 %
 Rated speed : 1193 rpm

Moment of inertia (J)
 Duty cycle : Cont.(S1)
 Insulation class : F
 Service factor : 1.15
 Temperature rise : 80 K
 Design : A

Locked rotor time : 54s (cold) 30s (hot)

Rev.	Changes Summary	Performed	Checked	Date
Performed by			Page 3 / 7	Revision
Checked by				
Date	13/04/2022			

LOAD PERFORMANCE CURVE

Three Phase Induction Motor - Squirrel Cage

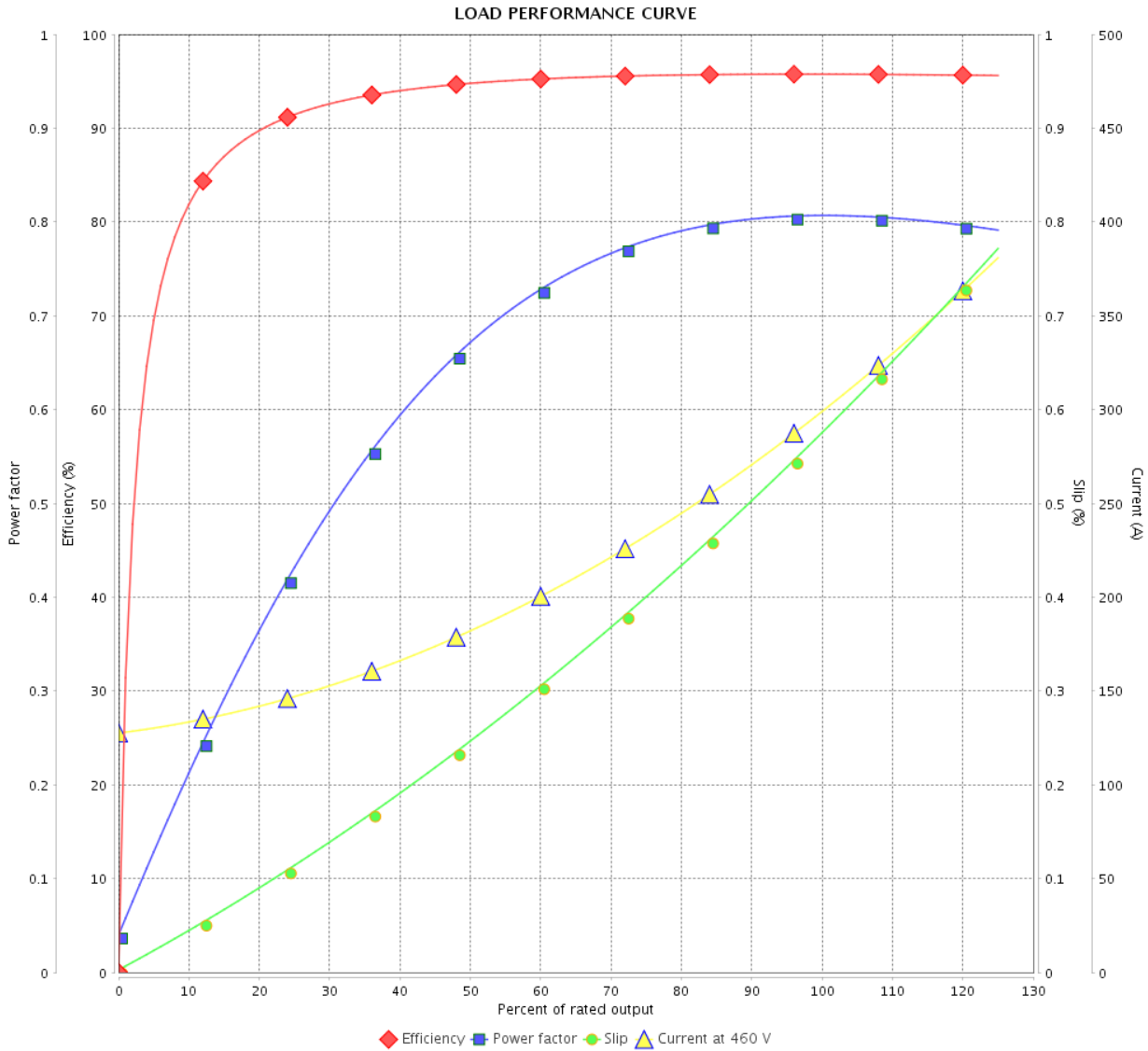


Customer : _____

Product line : NEMA Premium Efficiency Three-Phase

Product code : 13500597

Catalog # : 25012ET3GKD580Z-W22



Performance : 460 V 60 Hz 6P

Rated current : 299 A
 LRC : 6.1
 Rated torque : 1100 ft.lb
 Locked rotor torque : 210 %
 Breakdown torque : 229 %
 Rated speed : 1193 rpm

Moment of inertia (J)
 Duty cycle : Cont.(S1)
 Insulation class : F
 Service factor : 1.15
 Temperature rise : 80 K
 Design : A

Rev.	Changes Summary	Performed	Checked	Date
Performed by			Page 4 / 7	Revision
Checked by				
Date	13/04/2022			

THERMAL LIMIT CURVE



Three Phase Induction Motor - Squirrel Cage

Customer :

Product line : NEMA Premium Efficiency Three-Phase
 Product code : 13500597
 Catalog # : 25012ET3GKD580Z-W22

Performance : 460 V 60 Hz 6P

Rated current : 299 A	Moment of inertia (J)
LRC : 6.1	Duty cycle : Cont.(S1)
Rated torque : 1100 ft.lb	Insulation class : F
Locked rotor torque : 210 %	Service factor : 1.15
Breakdown torque : 229 %	Temperature rise : 80 K
Rated speed : 1193 rpm	Design : A

Heating constant

Cooling constant

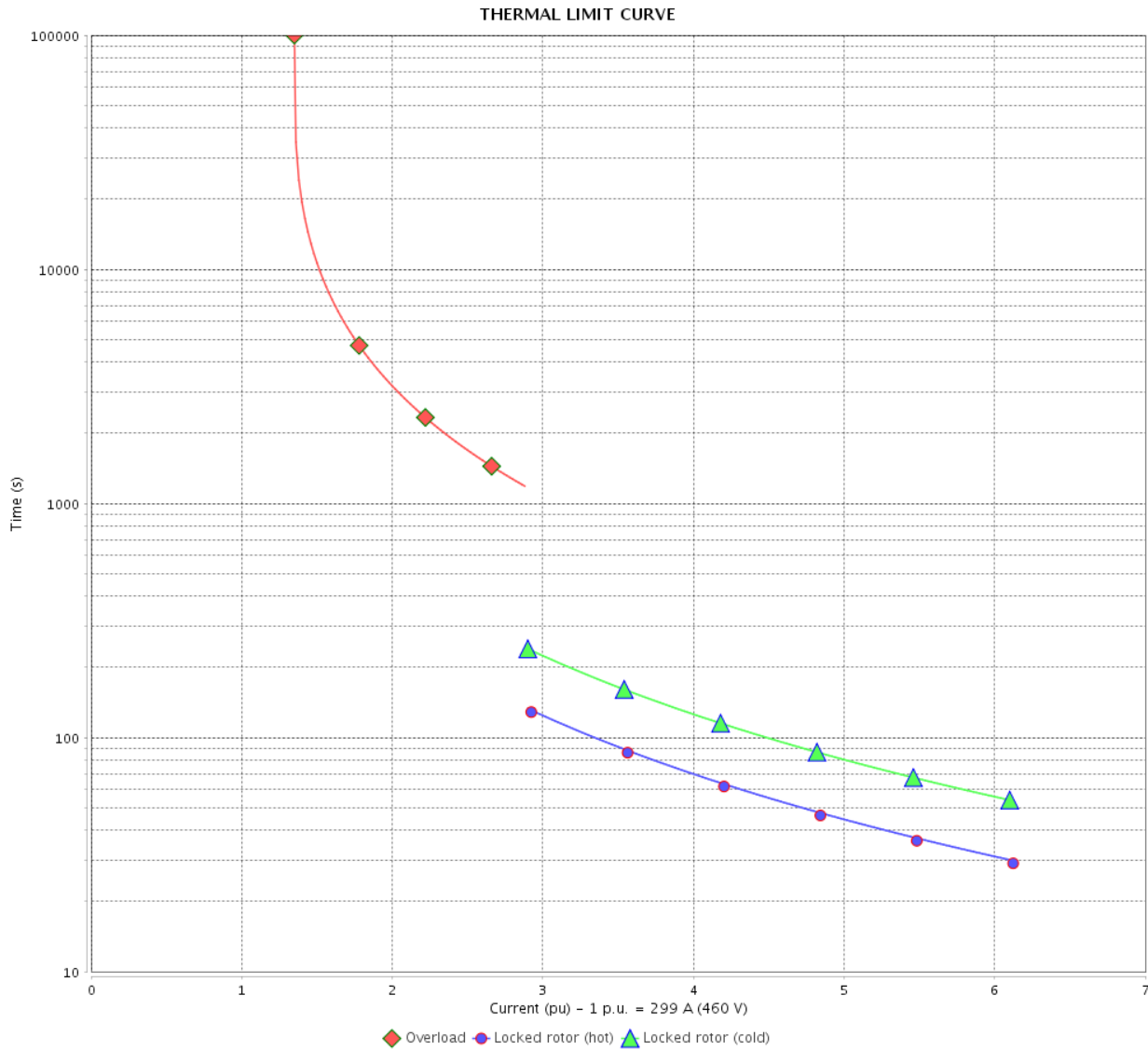
Rev.	Changes Summary	Performed	Checked	Date
Performed by			Page 5 / 7	Revision
Checked by				
Date	13/04/2022			

THERMAL LIMIT CURVE

Three Phase Induction Motor - Squirrel Cage



Customer : _____



Rev.	Changes Summary	Performed	Checked	Date
Performed by		Page		Revision
Checked by		6 / 7		
Date		13/04/2022		

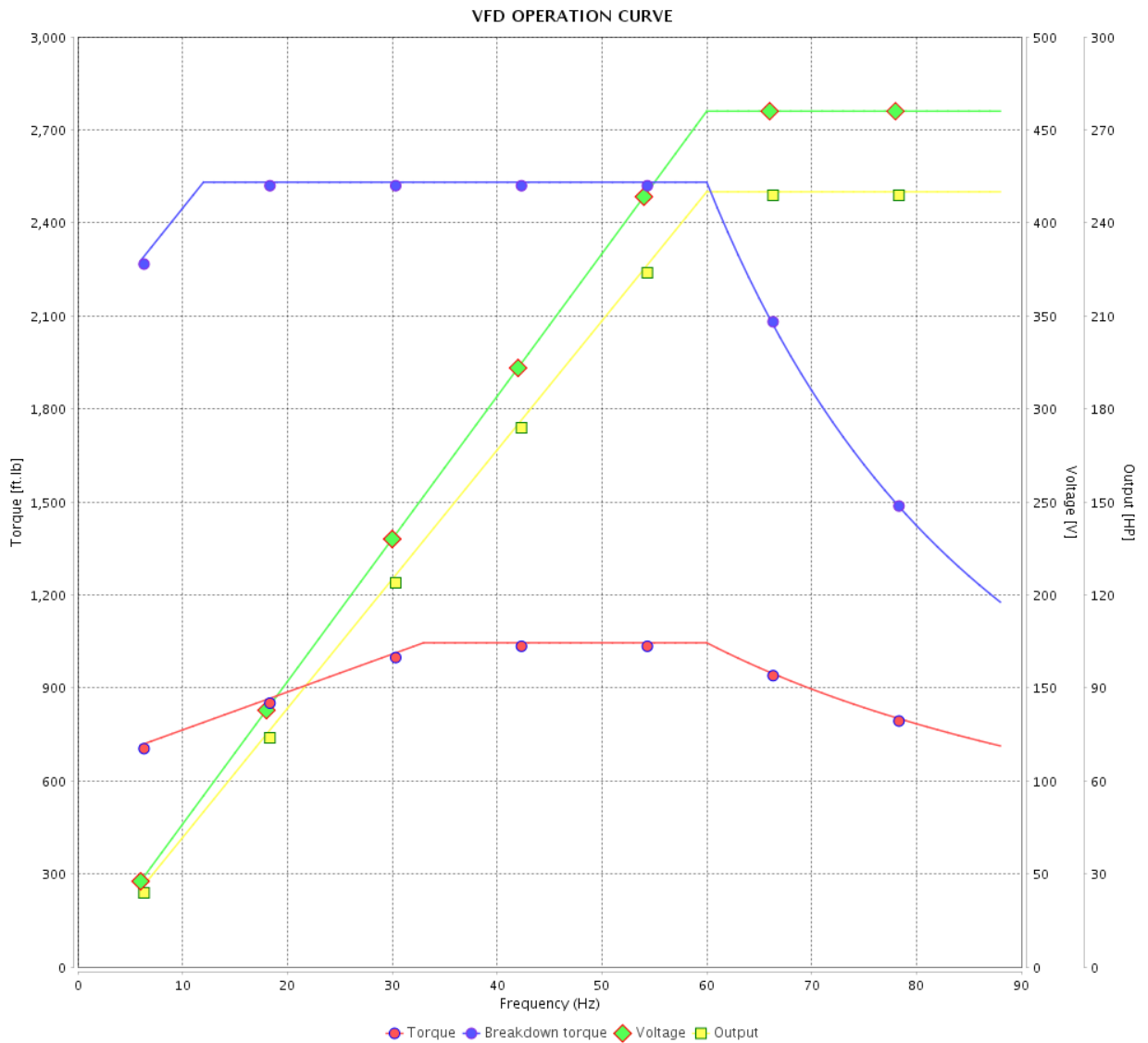
VFD OPERATION CURVE

Three Phase Induction Motor - Squirrel Cage



Customer :

Product line : NEMA Premium Efficiency Three-Phase
 Product code : 13500597
 Catalog # : 25012ET3GKD580Z-W22



Performance : 460 V 60 Hz 6P

Rated current : 299 A
 LRC : 6.1
 Rated torque : 1100 ft.lb
 Locked rotor torque : 210 %
 Breakdown torque : 229 %
 Rated speed : 1193 rpm

Moment of inertia (J)
 Duty cycle : Cont.(S1)
 Insulation class : F
 Service factor : 1.15
 Temperature rise : 80 K
 Design : A

Rev.	Changes Summary	Performed	Checked	Date
Performed by			Page	Revision
Checked by				
Date				

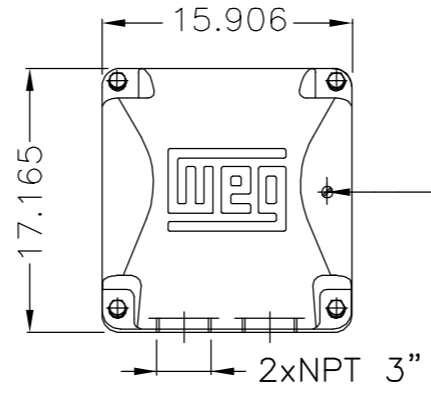
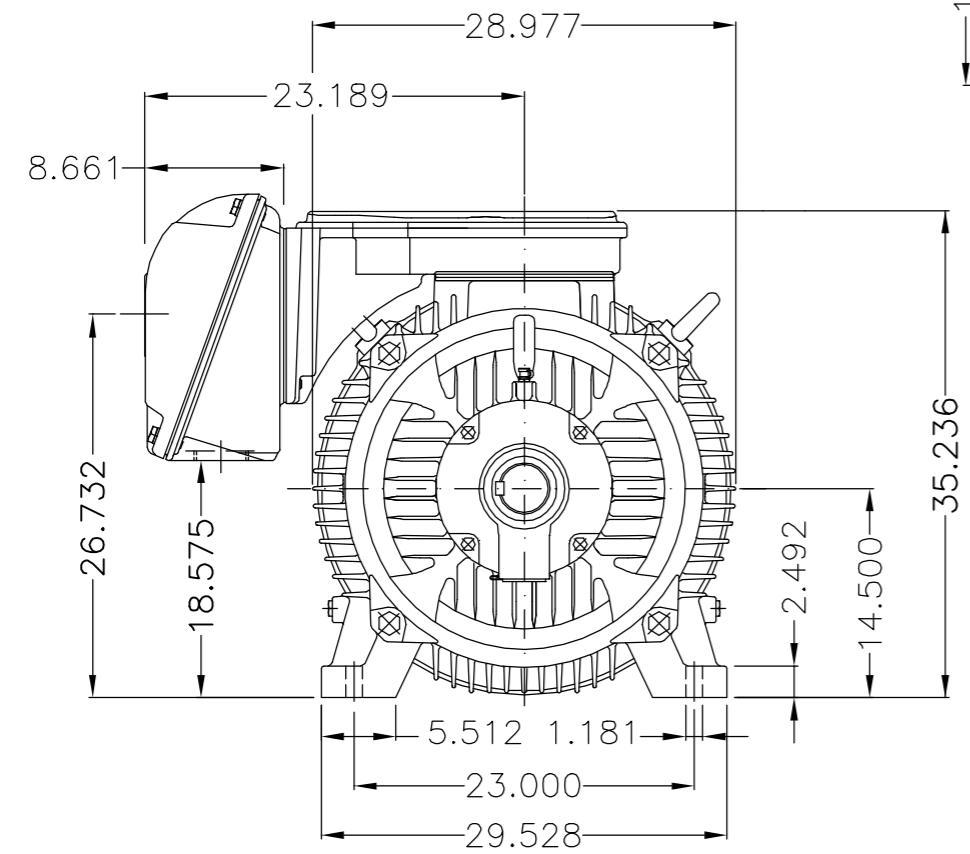
EIXO/SHAFT	
PADRÃO/STANDARD	
OPCIONAL/OPTIONAL	
ESPECIAL/SPECIAL	X

Dimensões em polegada
Dimensions in inches

CERTIFIED WEG MOTORES
Certified document.
Not subject to changes.

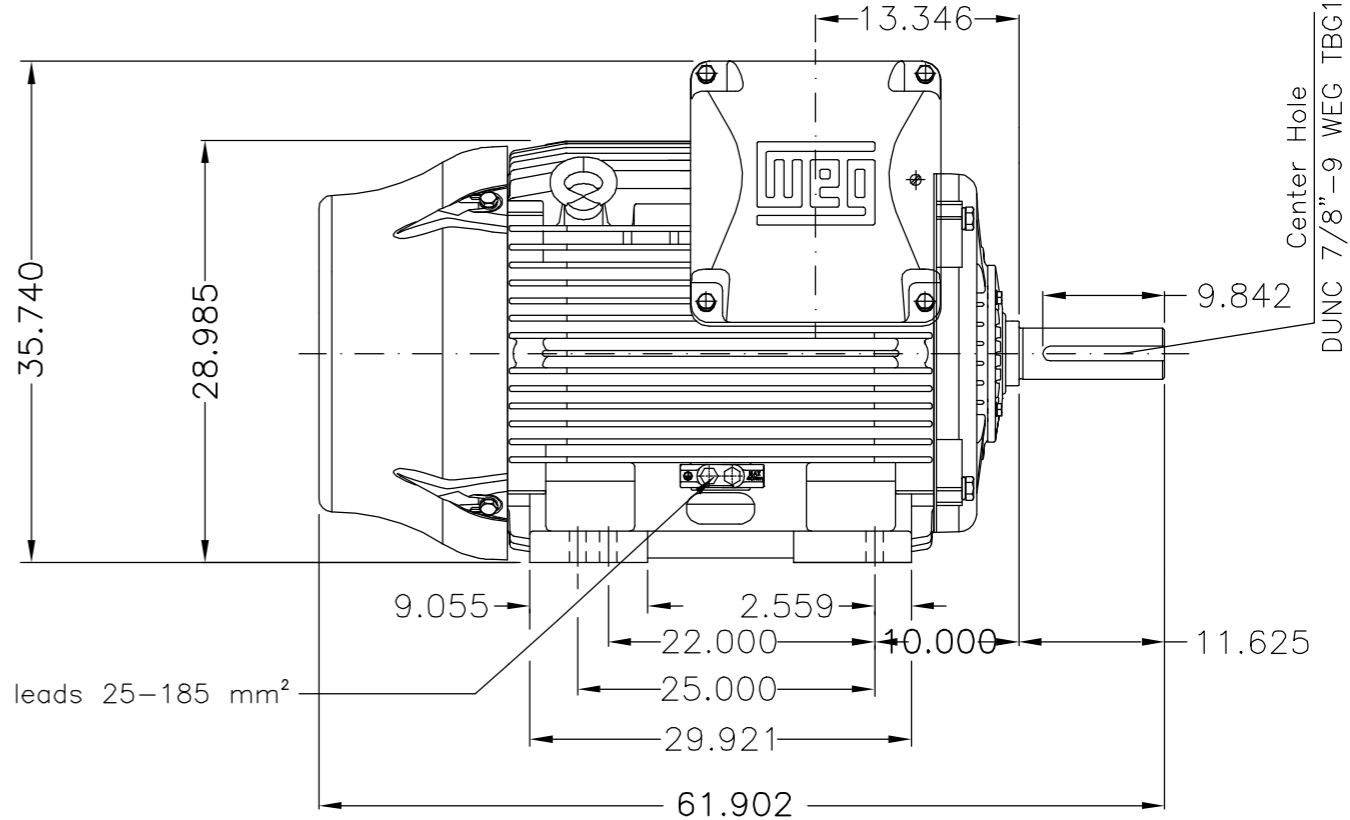
THIS IS AN UPDATED REVISION, THE PREVIOUS ONE MUST BE DISREGARDED.

A
B
C
D
E



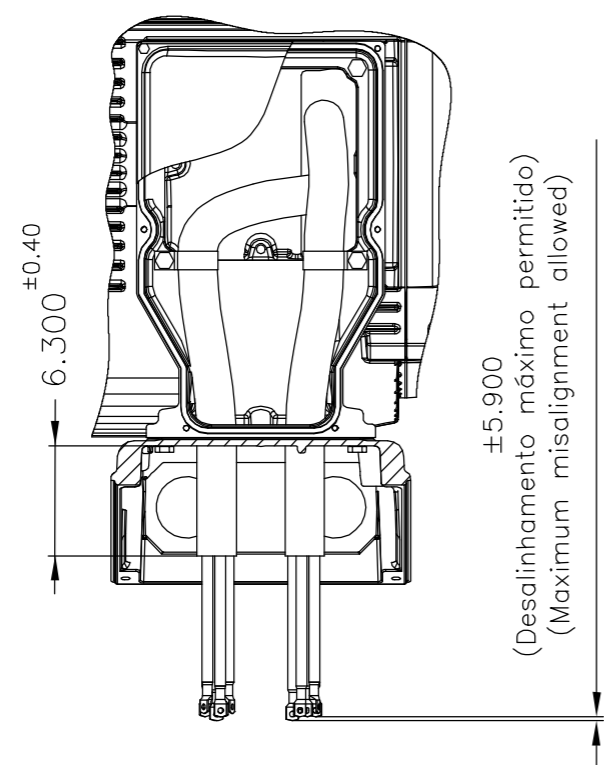
Main terminal box

Grounding for leads 35-120 mm²

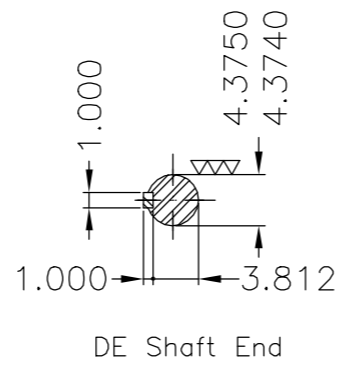


Grounding for leads 25-185 mm²

Center Hole
DUNC 7/8"-9 WEG TBG12



(Desalinhamento máximo permitido)
(Maximum misalignment allowed)



DE Shaft End

- Categoria A / Design A
- Proteção térmica desligamento - termostato 155°C / Thermostats 155°C to trip
- Tampa dianteira especial / Special DE endshield
- Conduite para cabos no interior do suporte da caixa de ligação
Cables conduit inside terminal box support
- Linha do motor: Crusher Duty / Motor purpose: Crusher Duty
- Rolamento dianteiro de rolos NU-324 / NU-324 DE roller bearing
- Dispositivo de travamento de eixo / Shaft locking device
- Tampa traseira com mancal eletricamente isolado
NDE endshield with electrically insulated bearing hub
- Cor RAL 5009 / Color RAL 5009
- Plano de pintura 203A / Painting plan 203A
- Forma construtiva NEMA F-1 / Mounting NEMA F-1
- Forma construtiva B3D / Mounting B3R(D)

WEG ELECTRIC CORPORATION - WEC

500001323616		ALTERADO CONFORME CDP 414658625	MENSOR		JMANENTE	20.06.2017	03
500001317820		ALTERADO CONFORME CLAIM 414658625	AKLOSOWSKI		JMANENTE	01.06.2017	02
ECM	LOC	SUMMARY OF MODIFICATIONS	EXECUTED	CHECKED	RELEASED	DATE	VER
EXECUTED	DVEGINI	THREE PHASE W22 MOTOR - NEMA PREMIUM EFF FRAME 586/7TZ IP55			10004037876		
CHECKED					000 03		
RELEASED	NSCHMIDT						
REL DT	22.01.2016		WMO	Jaraguá do Sul			

250 HP 06 Poles 60Hz 414149566/0 MEC

A

UNCONTROLLED COPY

RELEASED

ZME A3

MADE IN BRAZIL
13500597



NEMA
Premium
W22



FOR SAFE AREA
Mod.TE1BFOXON
CC029A



Class I, Div 2, Gr A, B, C and D - T3
Class I, Zone 2, IIC - T3
Class II, Div 2, Gr F and G - T3C
For use on PWM: Gr. A, B, C and D,
VT 1000:1, CT 20:1, 1.00SF - T2B

MODEL 25012ET3GKD580Z-W22

Inverter Duty Motor
Severe Duty

PH3 60Hz Fr. 586/7TZ 1000m.a.s.l. IP55 TEFC 3518lb

V 460

A 299

HP 250

kW 185

SF 1.15

SFA 344

RPM 1193

PF 0.81

AMB 40°C

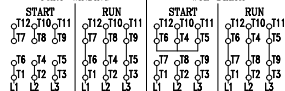
INS cl. F DT80K

NEMA NOM EFF 95.8%

DUTY CONT.

DES A Code G

PART-WINDING



→ NU-324-C3 (72g)

→ 6319-C3 (45g)

MOBIL POLYREX EM (6000h)

