

TORQUE AND CURRENT VS SPEED CURVE

Three Phase Induction Motor - Squirrel Cage



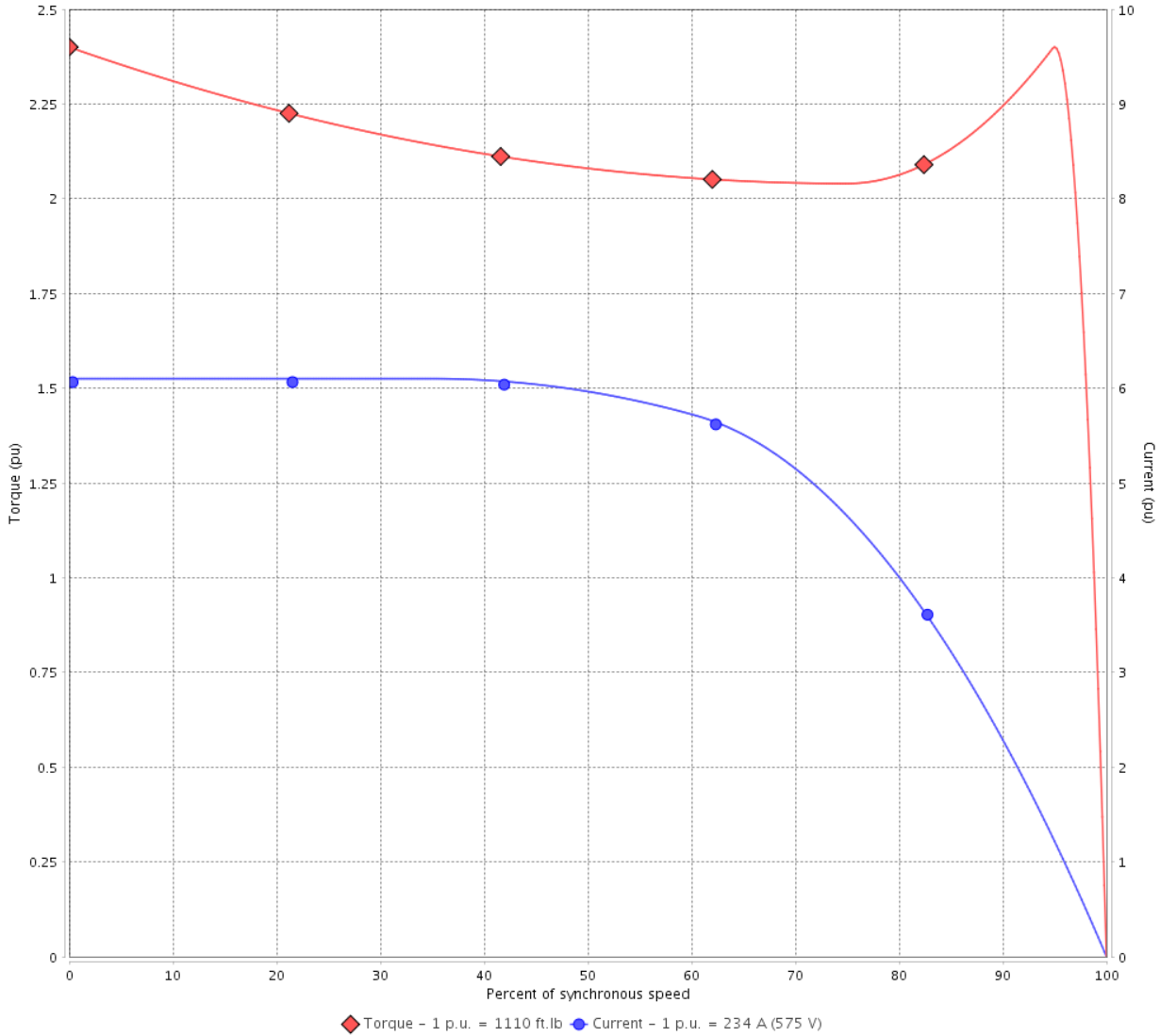
Customer :

Product line : NEMA Premium Efficiency Three-Phase

Product code : 12431876

Catalog # : 25012ST3HIE449T-W22

TORQUE AND CURRENT VS SPEED CURVE



Performance : 575 V 60 Hz 6P

Rated current	: 234 A	Moment of inertia (J)	: 145 sq.ft.lb
LRC	: 6.1	Duty cycle	: Cont.(S1)
Rated torque	: 1110 ft.lb	Insulation class	: F
Locked rotor torque	: 240 %	Service factor	: 1.15
Breakdown torque	: 240 %	Temperature rise	: 80 K
Rated speed	: 1185 rpm	Design	: B

Locked rotor time : 21s (cold) 12s (hot)

Rev.	Changes Summary	Performed	Checked	Date
Performed by			Page 2 / 6	Revision
Checked by				
Date	01/06/2022			

LOAD PERFORMANCE CURVE

Three Phase Induction Motor - Squirrel Cage

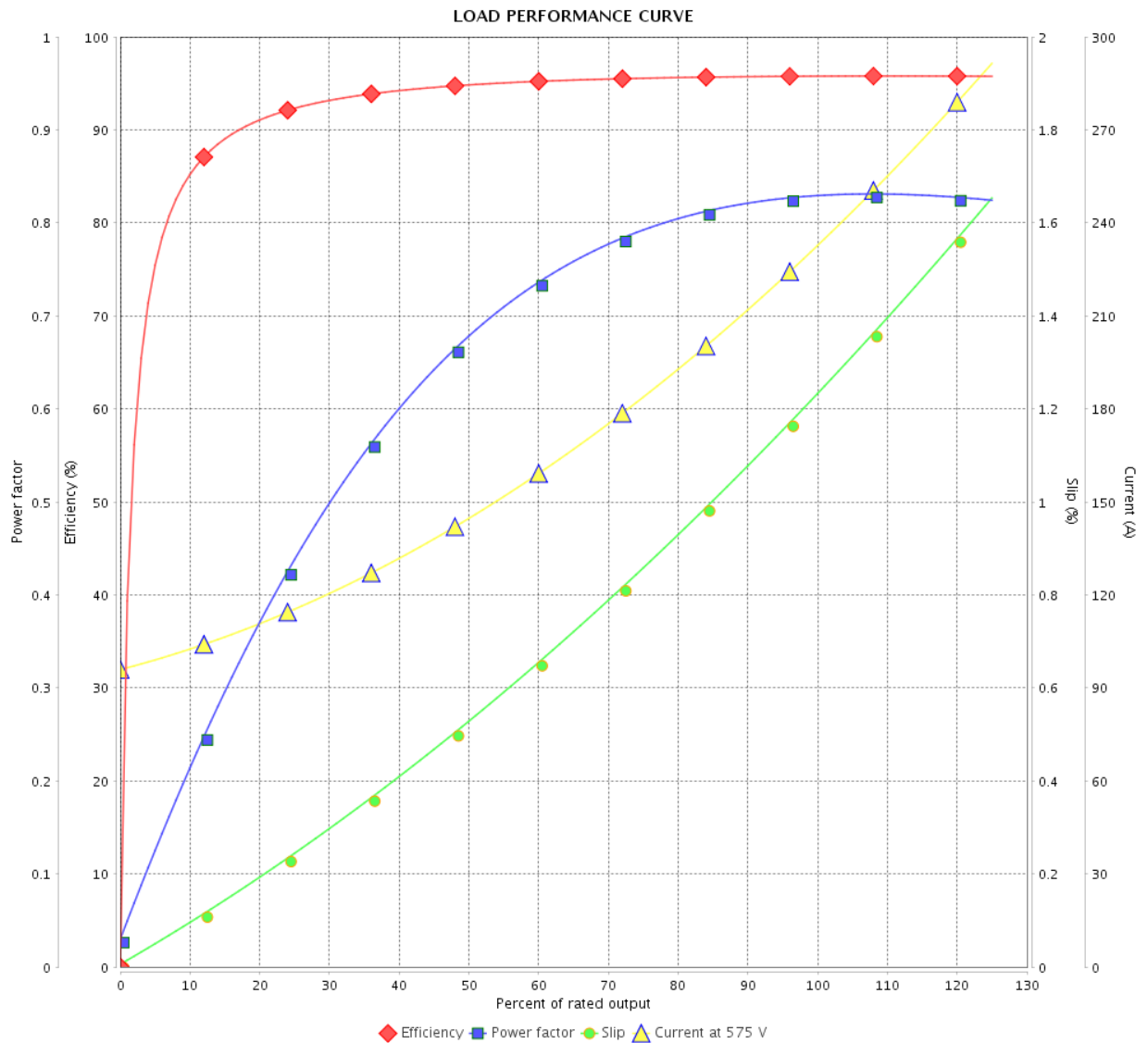


Customer : _____

Product line : NEMA Premium Efficiency Three-Phase

Product code : 12431876

Catalog # : 25012ST3HIE449T-W22



Performance : 575 V 60 Hz 6P

Rated current : 234 A
 LRC : 6.1
 Rated torque : 1110 ft.lb
 Locked rotor torque : 240 %
 Breakdown torque : 240 %
 Rated speed : 1185 rpm

Moment of inertia (J) : 145 sq.ft.lb
 Duty cycle : Cont.(S1)
 Insulation class : F
 Service factor : 1.15
 Temperature rise : 80 K
 Design : B

Rev.	Changes Summary	Performed	Checked	Date
Performed by				
Checked by				
Date				
		Page	Revision	
		3 / 6		

THERMAL LIMIT CURVE

Three Phase Induction Motor - Squirrel Cage



Customer :

Product line : NEMA Premium Efficiency Three-Phase
Product code : 12431876
Catalog # : 25012ST3HIE449T-W22

Performance : 575 V 60 Hz 6P

Rated current	: 234 A	Moment of inertia (J)	: 145 sq.ft.lb
LRC	: 6.1	Duty cycle	: Cont.(S1)
Rated torque	: 1110 ft.lb	Insulation class	: F
Locked rotor torque	: 240 %	Service factor	: 1.15
Breakdown torque	: 240 %	Temperature rise	: 80 K
Rated speed	: 1185 rpm	Design	: B

Heating constant

Cooling constant

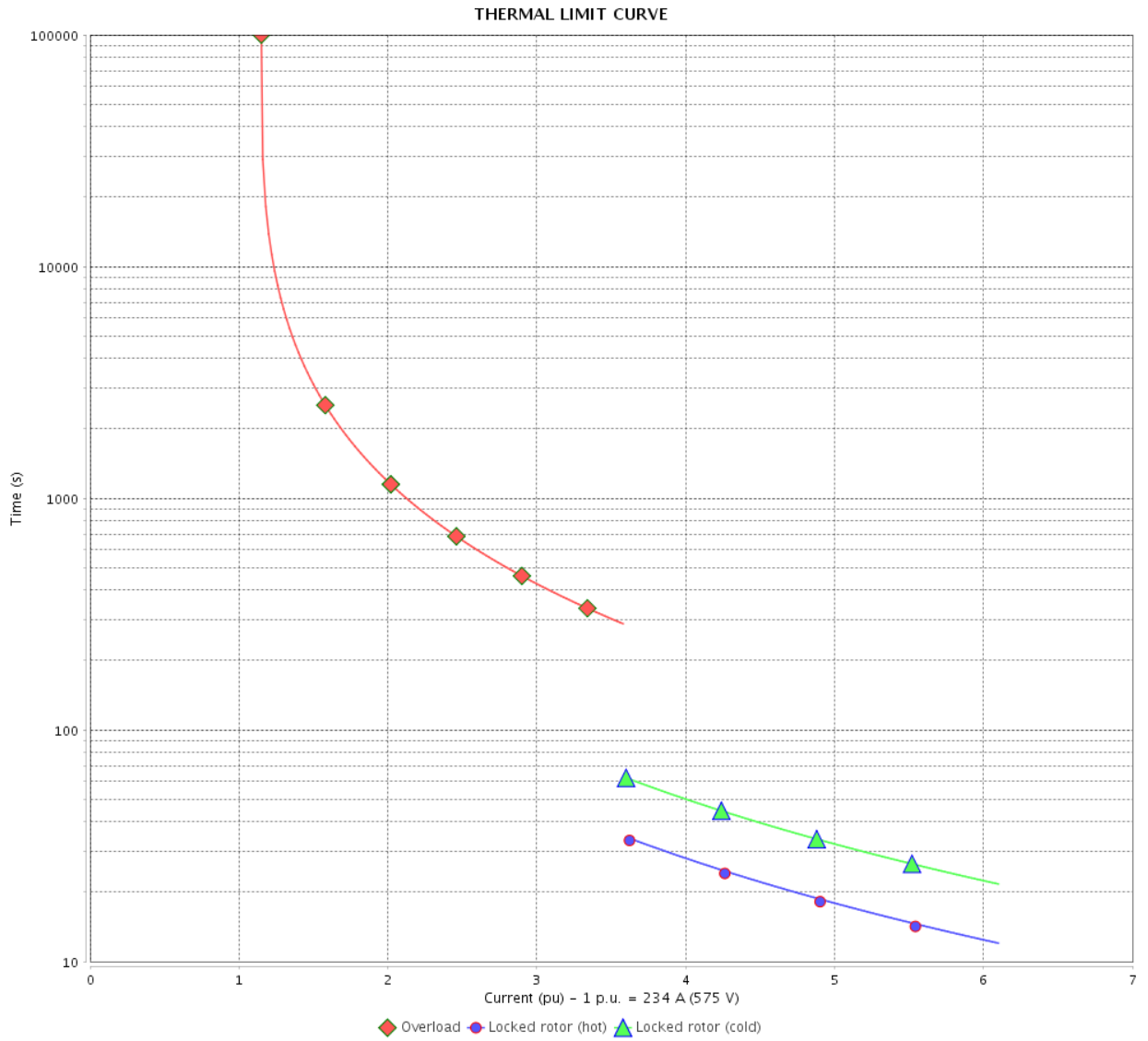
Rev.	Changes Summary	Performed	Checked	Date
Performed by				
Checked by			Page	Revision
Date	01/06/2022		4 / 6	

THERMAL LIMIT CURVE

Three Phase Induction Motor - Squirrel Cage



Customer : _____



Rev.	Changes Summary	Performed	Checked	Date
Performed by		Page 5 / 6		Revision
Checked by				
Date				

VFD OPERATION CURVE

Three Phase Induction Motor - Squirrel Cage



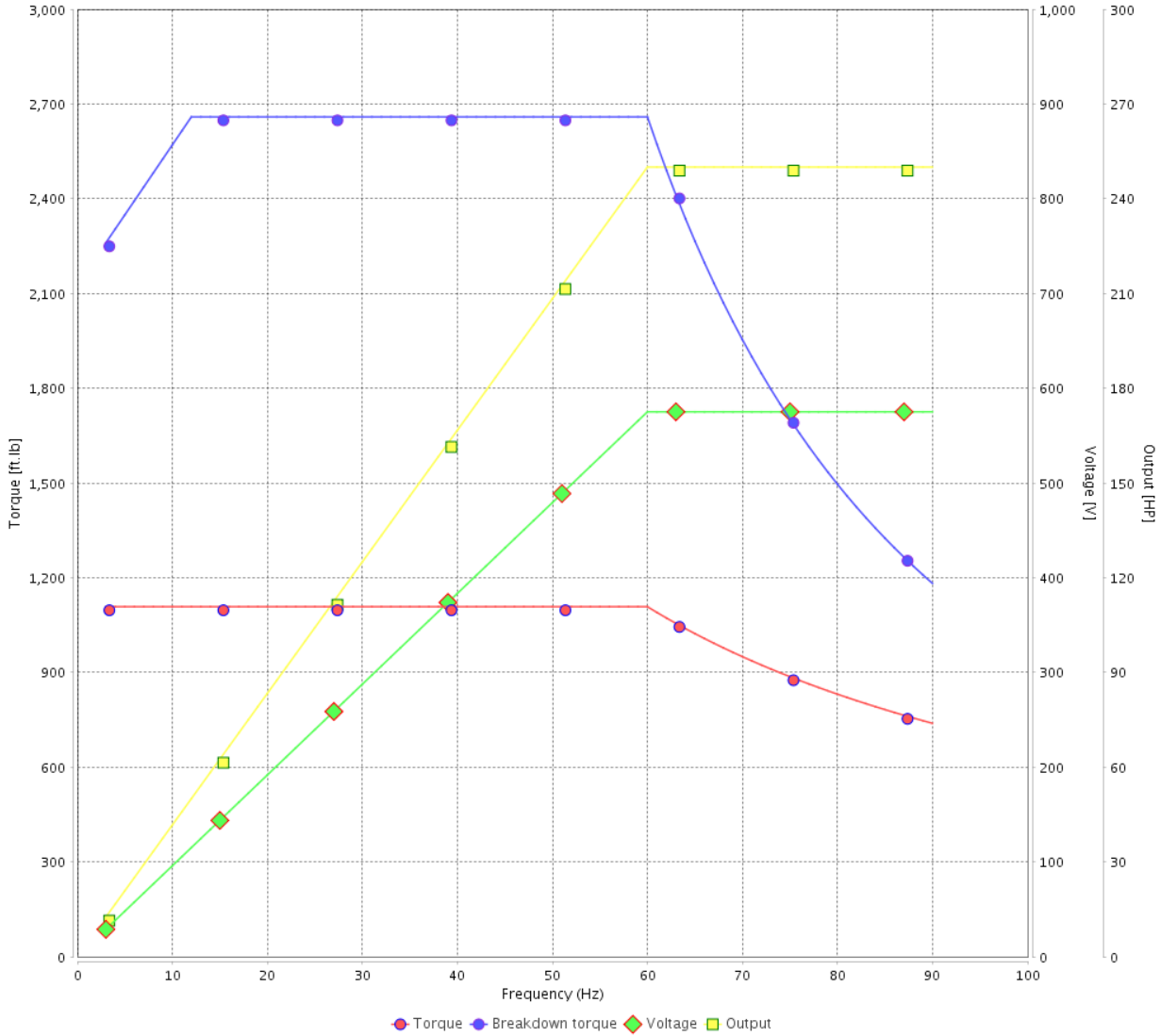
Customer :

Product line : NEMA Premium Efficiency Three-Phase

Product code : 12431876

Catalog # : 25012ST3HIE449T-W22

VFD OPERATION CURVE

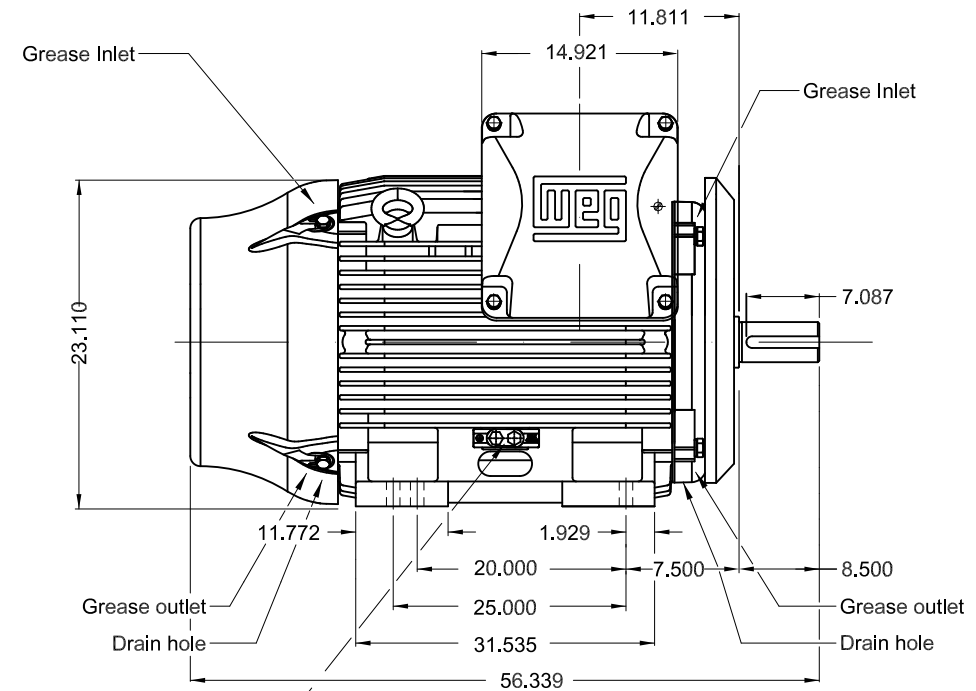
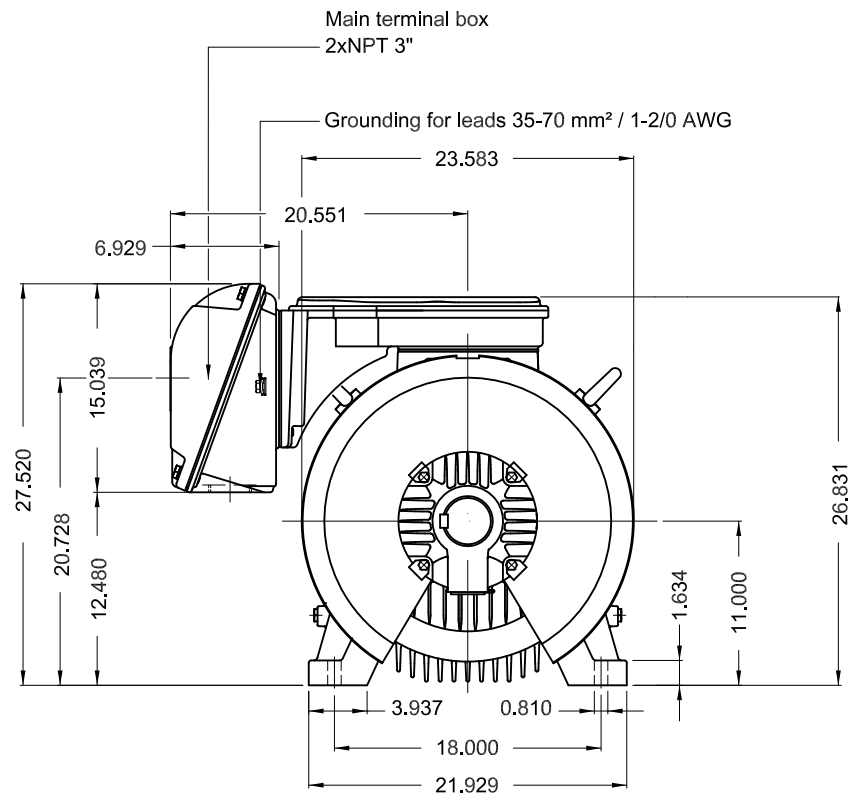


Performance : 575 V 60 Hz 6P

Rated current : 234 A
 LRC : 6.1
 Rated torque : 1110 ft.lb
 Locked rotor torque : 240 %
 Breakdown torque : 240 %
 Rated speed : 1185 rpm

Moment of inertia (J) : 145 sq.ft.lb
 Duty cycle : Cont.(S1)
 Insulation class : F
 Service factor : 1.15
 Temperature rise : 80 K
 Design : B

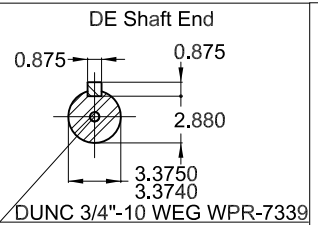
Rev.	Changes Summary	Performed	Checked	Date
Performed by			Page 6 / 6	Revision
Checked by				
Date	01/06/2022			



Grounding for leads 25-185 mm² / 3AWG-350MCM

250 HP 06 Poles 60 Hz A

- Without vertical jackscrews
- Drive-End Air Deflector
- Color RAL 5009
- Painting plan 202E
- Mounting B3R(D)



ECM	LOC	SUMMARY OF MODIFICATIONS	EXECUTED	CHECKED	RELEASED	DATE	VER
EXECUTED	HYBRISUSER	THREE PH. MOTOR IEEE 841 W22 PREM. EFF. FRAME 447/9T IP55 TEFC					
CHECKED							
RELEASED							
REL DT.							
		WMO Jaragua do Sul	Product Engineering	PREVIEW WDD			
			SHEET		1 / 1		



NEMA
Premium
W22



FOR SAFE AREA
Mod.TE1BFOXON
CC029A



Class I, Div 2, Gr A, B, C and D - T3
Class I, Zone 2, IIC - T3
Class II, Div 2, Gr F and G - T3C
For use on PWM: Gr. A, B, C, D and F,
VT 1000:1, CT 20:1, 1.00SF - T3

MODEL 25012ST3HIE449T-W22



Inverter Duty Motor
Severe Duty

MADE IN BRAZIL
12431876

PH3 60Hz Fr. 447/9T 1000m.a.s.l. IP55 TEFC 2970lb

V 575

A 234

HP 250

kW 185

SF 1.15

SFA 269

RPM 1185

PF 0.83

AMB 40°C

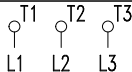
INS cl. F DT80K

NEMA NOM EFF 95.8%

DUTY CONT.

DES B Code G

GUARANT. EFF 95.0%



575V



→ 6322-C3 (60g) 110BC03X30

→ 6319-C3 (45g) 95BC03X30



MOBIL POLYREX EM (11000h)

