

DATA SHEET



Three Phase Induction Motor - Squirrel Cage

Customer :																			
Product line	: NEMA Premium Efficiency Three-Phase																		
Product code :	13822262																		
Catalog # :	25018ET3GKD447T-W22																		
Frame : 445/7T Output : 250 HP (185 kW) Poles : 4 Frequency : 60 Hz Rated voltage : 460 V Rated current : 281 A L. R. Amperes : 1827 A LRC : 6.5x(Code G) No load current : 90.0 A Rated speed : 1780 rpm Slip : 1.11 % Rated torque : 738 ft.lb Locked rotor torque : 229 % Breakdown torque : 240 % Insulation class : F Service factor : 1.15 Design : A	Locked rotor time : 27s (cold) 15s (hot) Temperature rise : 80 K Duty cycle : Cont.(S1) Ambient temperature : -20°C to +40°C Altitude : 1000 m.a.s.l. Protection degree : IP55 Cooling method : IC411 - TEFC Mounting : F-1 Rotation ¹ : Both (CW and CCW) Noise level ² : 73.0 dB(A) Starting method : Direct On Line Approx. weight ³ : 2578 lb																		
Output	25% 50% 75% 100%																		
Efficiency (%)	0.000 95.8 96.2 96.2																		
Power Factor	0.00 0.75 0.83 0.86																		
Foundation loads																			
Max. traction	: 3430 lb																		
Max. compression	: 6008 lb																		
	<table border="0"> <tr> <td></td> <td style="text-align: center;"><u>Drive end</u></td> <td style="text-align: center;"><u>Non drive end</u></td> </tr> <tr> <td>Bearing type :</td> <td>NU-319 C3</td> <td>6316 C3</td> </tr> <tr> <td>Sealing :</td> <td>WSeal</td> <td>WSeal</td> </tr> <tr> <td>Lubrication interval :</td> <td>5000 h</td> <td>10000 h</td> </tr> <tr> <td>Lubricant amount :</td> <td>45 g</td> <td>34 g</td> </tr> <tr> <td>Lubricant type :</td> <td colspan="2" style="text-align: center;">Mobil Polyrex EM</td> </tr> </table>		<u>Drive end</u>	<u>Non drive end</u>	Bearing type :	NU-319 C3	6316 C3	Sealing :	WSeal	WSeal	Lubrication interval :	5000 h	10000 h	Lubricant amount :	45 g	34 g	Lubricant type :	Mobil Polyrex EM	
	<u>Drive end</u>	<u>Non drive end</u>																	
Bearing type :	NU-319 C3	6316 C3																	
Sealing :	WSeal	WSeal																	
Lubrication interval :	5000 h	10000 h																	
Lubricant amount :	45 g	34 g																	
Lubricant type :	Mobil Polyrex EM																		
Notes																			
This revision replaces and cancel the previous one, which must be eliminated. (1) Looking the motor from the shaft end. (2) Measured at 1m and with tolerance of +3dB(A). (3) Approximate weight subject to changes after manufacturing process. (4) At 100% of full load.																			
These are average values based on tests with sinusoidal power supply, subject to the tolerances stipulated in NEMA MG-1.																			
Rev.	Changes Summary	Performed	Checked	Date															
Performed by																			
Checked by			Page	Revision															
Date	13/04/2022		1 / 6																

TORQUE AND CURRENT VS SPEED CURVE

Three Phase Induction Motor - Squirrel Cage



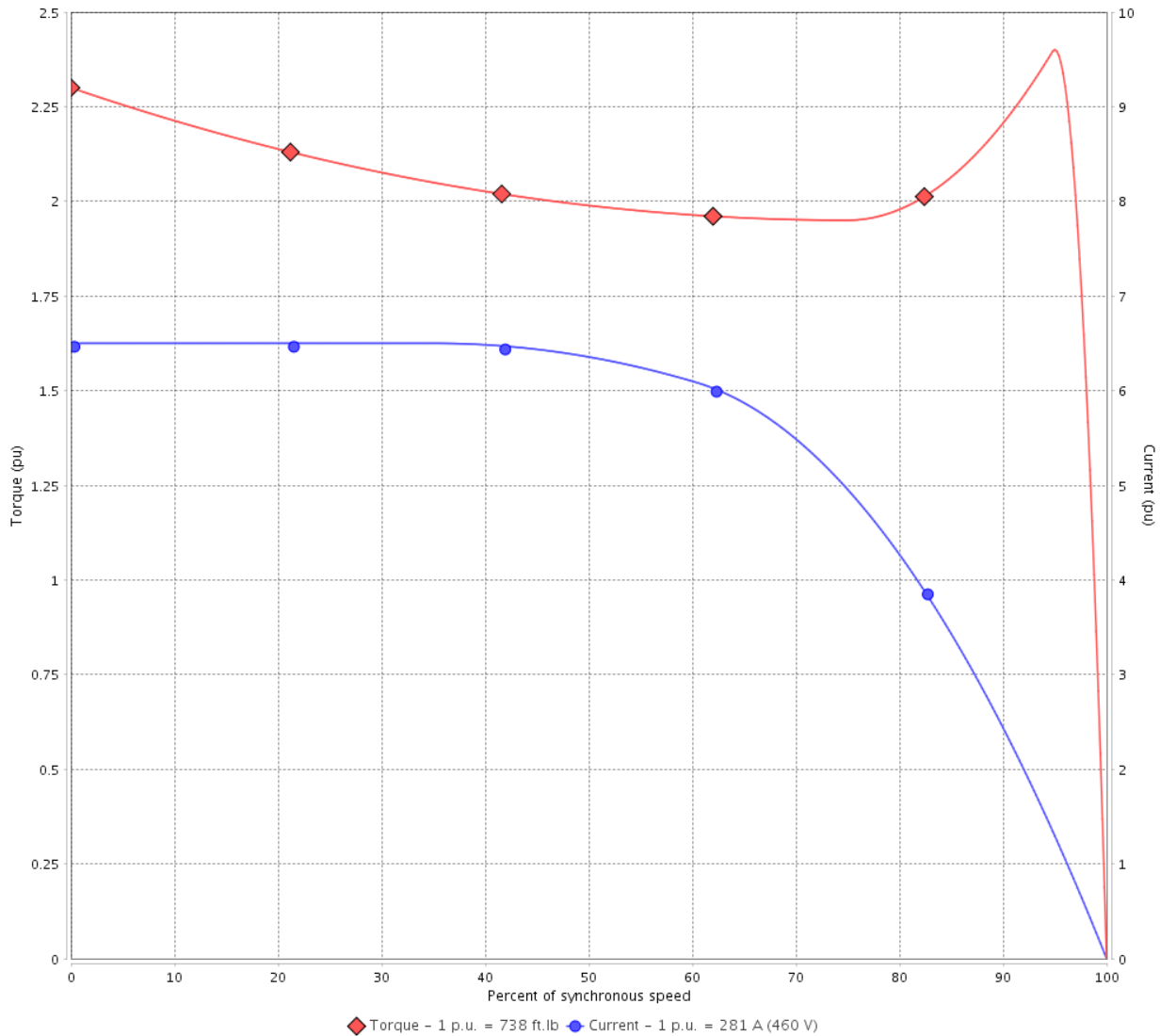
Customer :

Product line : NEMA Premium Efficiency Three-Phase

Product code : 13822262

Catalog # : 25018ET3GKD447T-W22

TORQUE AND CURRENT VS SPEED CURVE



Performance : 460 V 60 Hz 4P

Rated current	: 281 A	Moment of inertia (J)	
LRC	: 6.5	Duty cycle	: Cont.(S1)
Rated torque	: 738 ft.lb	Insulation class	: F
Locked rotor torque	: 229 %	Service factor	: 1.15
Breakdown torque	: 240 %	Temperature rise	: 80 K
Rated speed	: 1780 rpm	Design	: A

Locked rotor time : 27s (cold) 15s (hot)

Rev.	Changes Summary	Performed	Checked	Date
Performed by			Page 2 / 6	Revision
Checked by				
Date	13/04/2022			

LOAD PERFORMANCE CURVE

Three Phase Induction Motor - Squirrel Cage

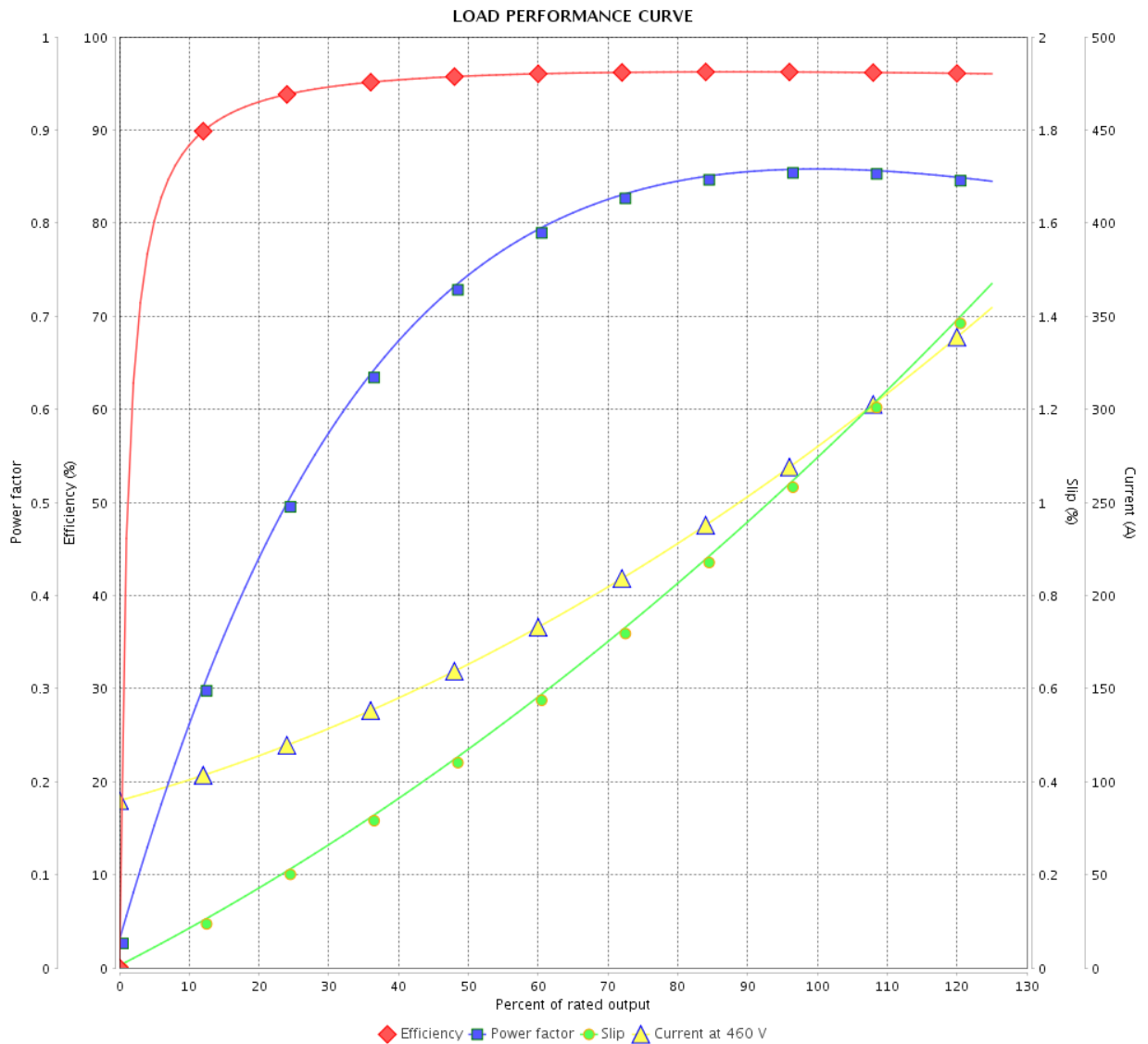


Customer : _____

Product line : NEMA Premium Efficiency Three-Phase

Product code : 13822262

Catalog # : 25018ET3GKD447T-W22



Performance : 460 V 60 Hz 4P

Rated current : 281 A
 LRC : 6.5
 Rated torque : 738 ft.lb
 Locked rotor torque : 229 %
 Breakdown torque : 240 %
 Rated speed : 1780 rpm

Moment of inertia (J)
 Duty cycle : Cont.(S1)
 Insulation class : F
 Service factor : 1.15
 Temperature rise : 80 K
 Design : A

Rev.	Changes Summary	Performed	Checked	Date
Performed by		Page		Revision
Checked by		3 / 6		
Date		13/04/2022		

THERMAL LIMIT CURVE



Three Phase Induction Motor - Squirrel Cage

Customer :

Product line : NEMA Premium Efficiency Three-Phase
 Product code : 13822262
 Catalog # : 25018ET3GKD447T-W22

Performance : 460 V 60 Hz 4P

Rated current : 281 A	Moment of inertia (J)
LRC : 6.5	Duty cycle : Cont.(S1)
Rated torque : 738 ft.lb	Insulation class : F
Locked rotor torque : 229 %	Service factor : 1.15
Breakdown torque : 240 %	Temperature rise : 80 K
Rated speed : 1780 rpm	Design : A

Heating constant

Cooling constant

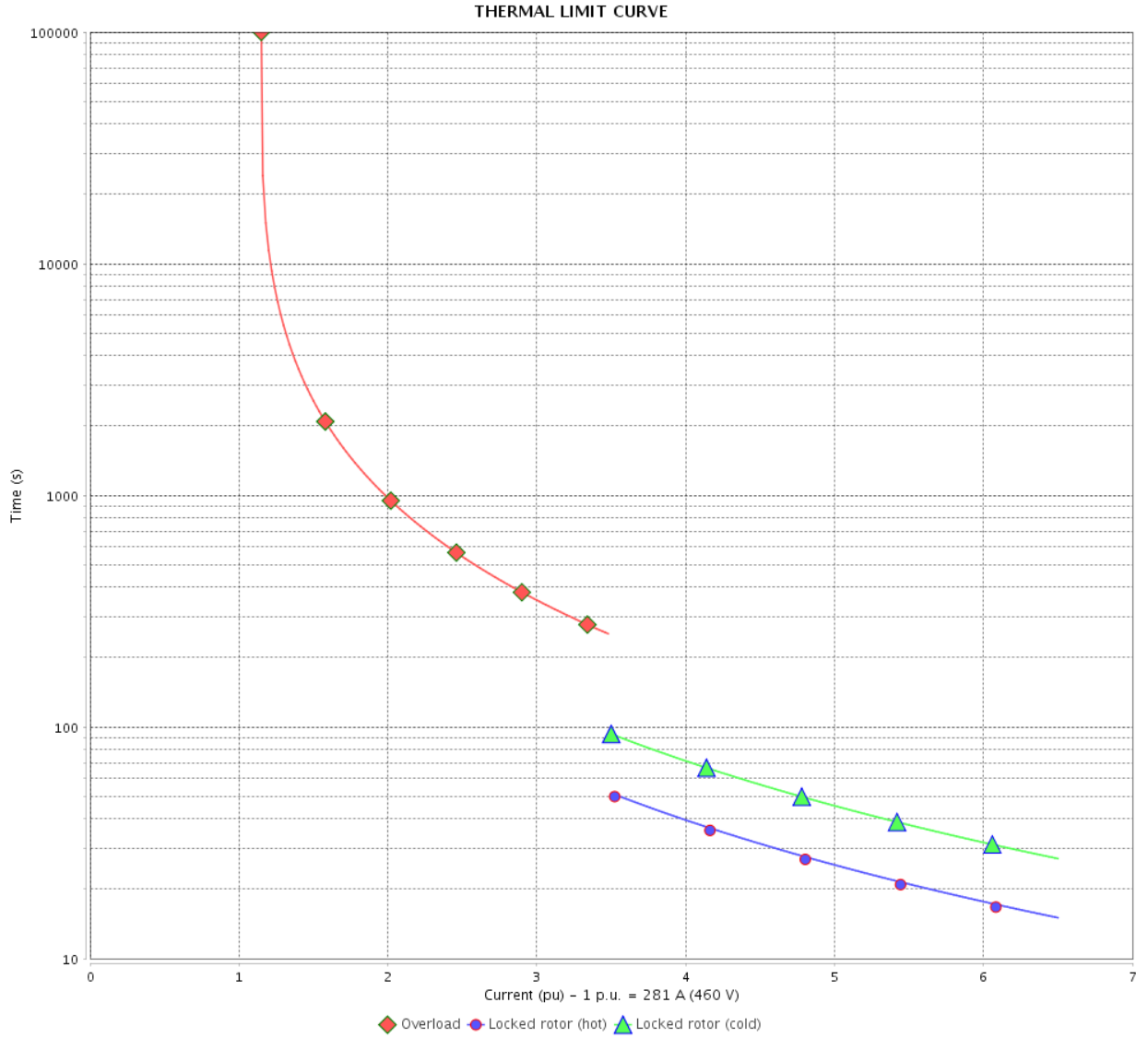
Rev.	Changes Summary	Performed	Checked	Date
Performed by			Page	Revision
Checked by				
Date	13/04/2022			

THERMAL LIMIT CURVE

Three Phase Induction Motor - Squirrel Cage



Customer : _____



Rev.	Changes Summary	Performed	Checked	Date
Performed by		Page 5 / 6		Revision
Checked by				
Date				

VFD OPERATION CURVE

Three Phase Induction Motor - Squirrel Cage

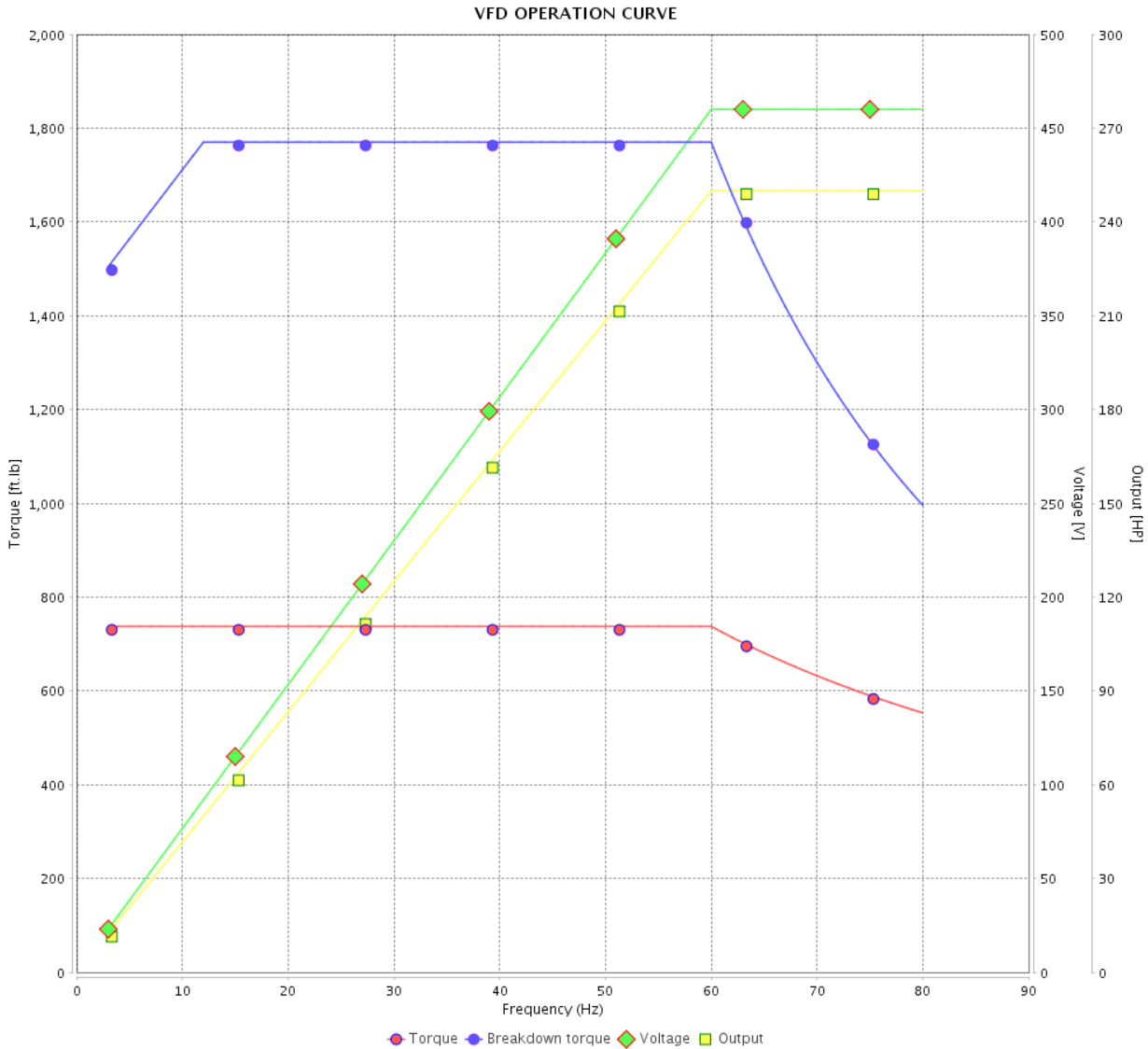


Customer :

Product line : NEMA Premium Efficiency Three-Phase

Product code : 13822262

Catalog # : 25018ET3GKD447T-W22



Performance : 460 V 60 Hz 4P

Rated current : 281 A
 LRC : 6.5
 Rated torque : 738 ft.lb
 Locked rotor torque : 229 %
 Breakdown torque : 240 %
 Rated speed : 1780 rpm

Moment of inertia (J)
 Duty cycle : Cont.(S1)
 Insulation class : F
 Service factor : 1.15
 Temperature rise : 80 K
 Design : A

Rev.	Changes Summary	Performed	Checked	Date
Performed by			Page 6 / 6	Revision
Checked by				
Date	13/04/2022			

EIXO/SHAFT	
PADRÃO/STANDARD	X
OPCIONAL/OPTIONAL	
ESPECIAL/SPECIAL	

Dimensões em polegada
Dimensions in inches

THIS IS AN UPDATED REVISION, THE PREVIOUS ONE MUST BE DISREGARDED.

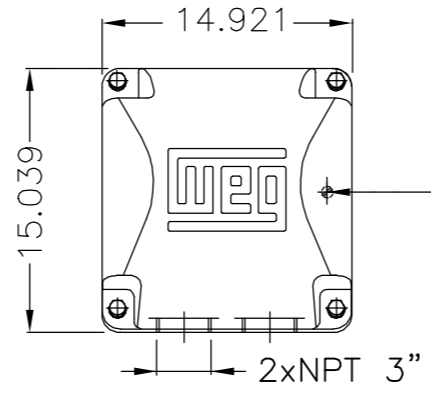
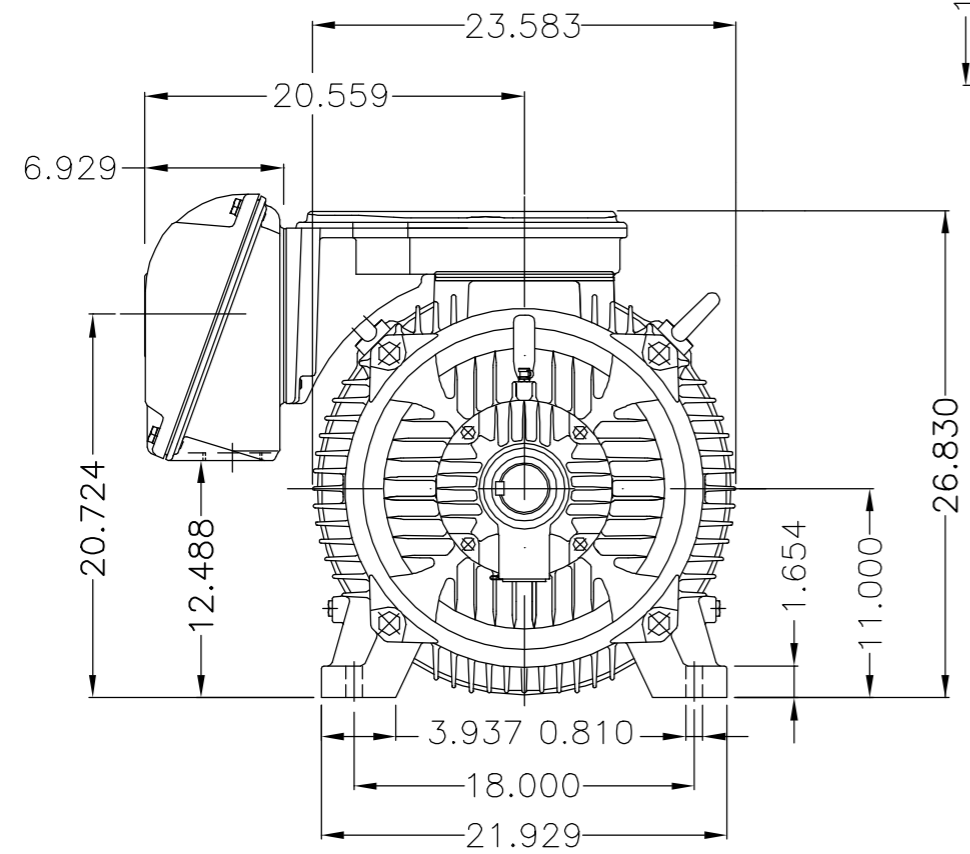
A

B

C

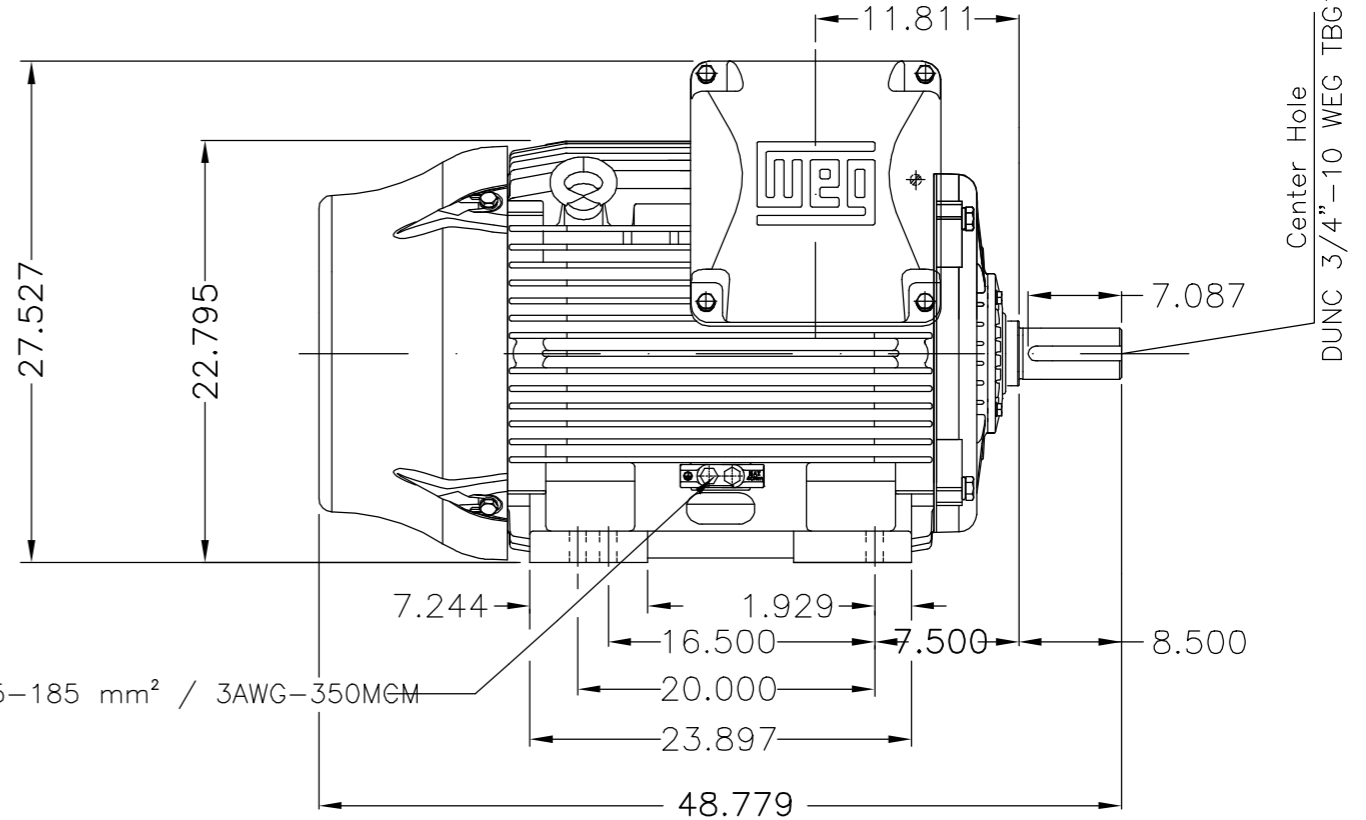
D

E



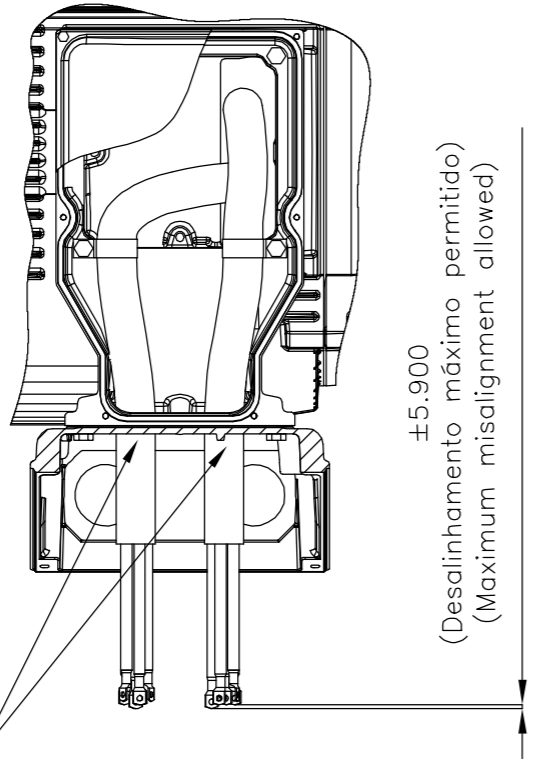
Main terminal box

Grounding for leads 35-70 mm² / 1-2/0 AWG

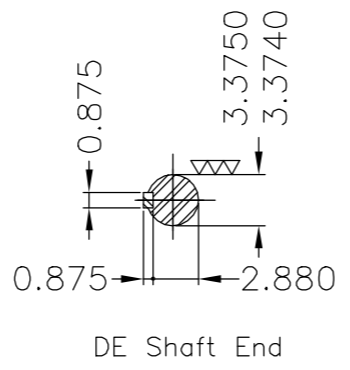


Grounding for leads 25-185 mm² / 3AWG-350MCM

Fixar o conduto no suporte com abraçadeiras.
Fasten the conduit on support with cables ties.



(Desalinhamento máximo permitido)
(Maximum misalignment allowed)



DE Shaft End

Linha do motor: Crusher Duty / Motor purpose: Crusher Duty						
Rolamento dianteiro de rolos / DE roller bearing						
Conduite para cabos no interior do suporte da caixa de ligação						
Cables conduit inside terminal box support						
Dispositivo de travamento de eixo / Shaft locking device						
Cor RAL 5009 / Color RAL 5009						
Plano de pintura 203A / Painting plan 203A						
Forma construtiva B3D / Mounting B3R(D)						
WEG EQUIPAMENTOS ELETRICOS S/A						

500001331189	ADIC.NOTA CONDUITE/ADD NOTE CONDUIT	MENSOR		EANJOS	05.07.2017	03
500001323616	ALTERADO CONFORME CLAIM 414658625	MENSOR		JMANENTE	20.06.2017	02
ECM	LOC	SUMMARY OF MODIFICATIONS		EXECUTED	CHECKED	RELEASED
EXECUTED	GABRIELID	THREE PHASE W22 MOTOR		10004923855		
CHECKED		FRAME 445/7T IP55 TEFC		000 04		
RELEASED	JMANENTE			SHEET 1 / 1		
REL DT	09.05.2017	WMO	Jaragua do Sul	Product Engineering		

200 HP	06 Poles	60Hz	414668751	D
150 HP	06 Poles	60Hz	414668751	C
250 HP	04 Poles	60Hz	414658029	B
200 HP	04 Poles	60Hz	414668751	A

UNCONTROLLED COPY

RELEASED

ZME A3

MADE IN BRAZIL
13822262



NEMA
Premium
W22



FOR SAFE AREA
Mod.TE1BFOXON
CC029A



Class I, Div 2, Gr A, B, C and D - T3
Class I, Zone 2, IIC - T3
Class II, Div 2, Gr F and G - T3C
For use on PWM: Gr. A, B, C, D and F,
VT 1000:1, CT 20:1, 1.00SF - T3

MODEL 25018ET3GKD447T-W22

Inverter Duty Motor
Severe Duty

PH3 60Hz Fr. 445/7T 1000m.a.s.l. IP55 TEFC 2576lb

V 460

A 281

HP 250

kW 185

SF 1.15

SFA 323

RPM 1780

PF 0.86

AMB 40°C

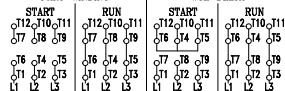
INS cl. F DT80K

NEMA NOM EFF 96.2%

DUTY CONT.

DES A Code G

PART-WINDING



→ NU-319-C3 (45g)

→ 6316-C3 (34g)



MOBIL POLYREX EM (5000h)

