

TORQUE AND CURRENT VS SPEED CURVE

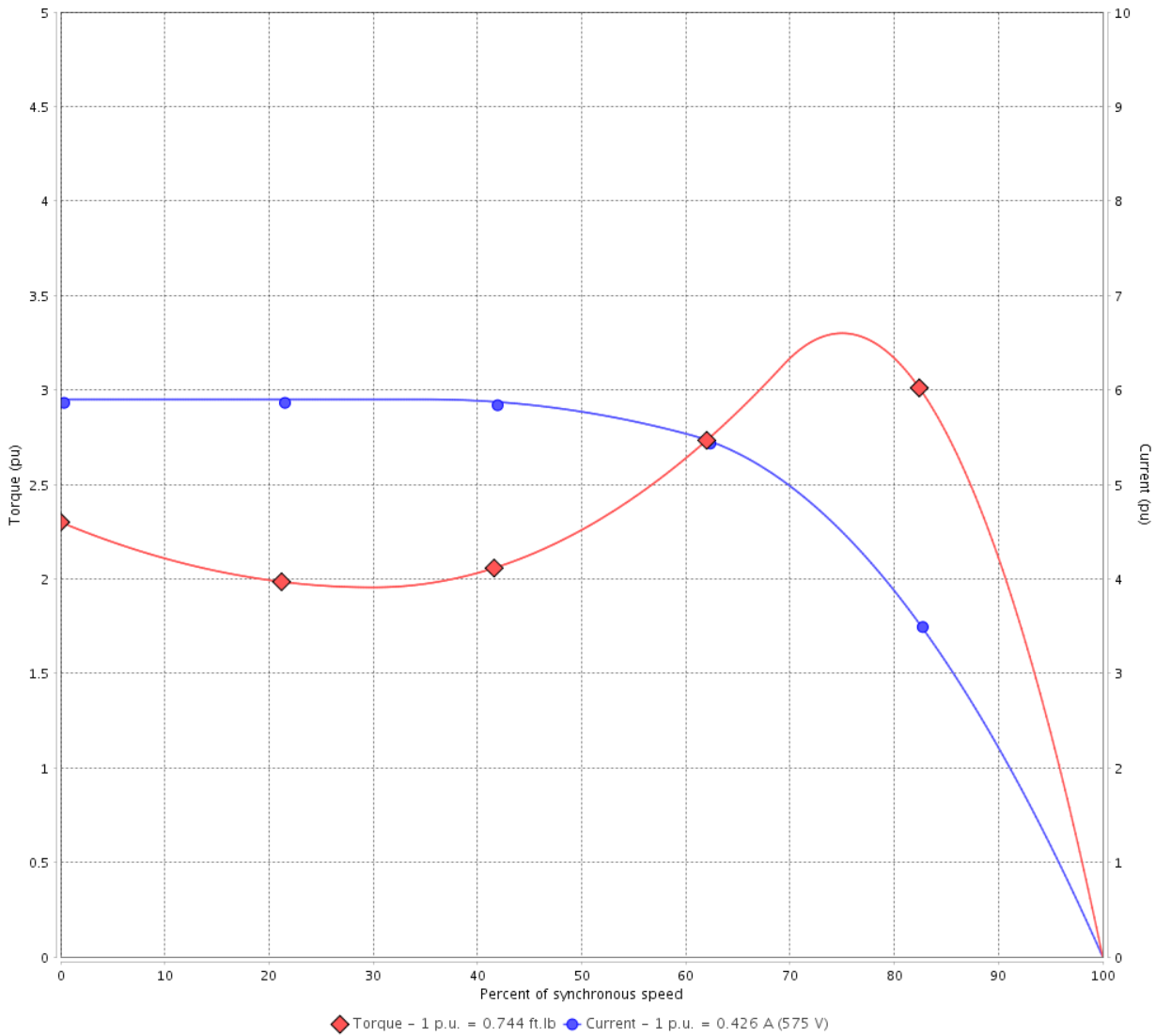
Three Phase Induction Motor - Squirrel Cage



Customer :

Product line : Premium Efficiency Three-Phase Product code : 12809199
 Catalog # : .2518OT3H56CFL-S

TORQUE AND CURRENT VS SPEED CURVE



Performance : 575 V 60 Hz 4P

Rated current	: 0.426 A	Moment of inertia (J)	: 0.0389 sq.ft.lb
LRC	: 5.9	Duty cycle	: Cont.(S1)
Rated torque	: 0.744 ft.lb	Insulation class	: F
Locked rotor torque	: 229 %	Service factor	: 1.35
Breakdown torque	: 330 %	Temperature rise	: 80 K
Rated speed	: 1765 rpm		

Locked rotor time : 68s (cold) 38s (hot)

Rev.	Changes Summary	Performed	Checked	Date
Performed by			Page 2 / 5	Revision
Checked by				
Date	11/04/2022			

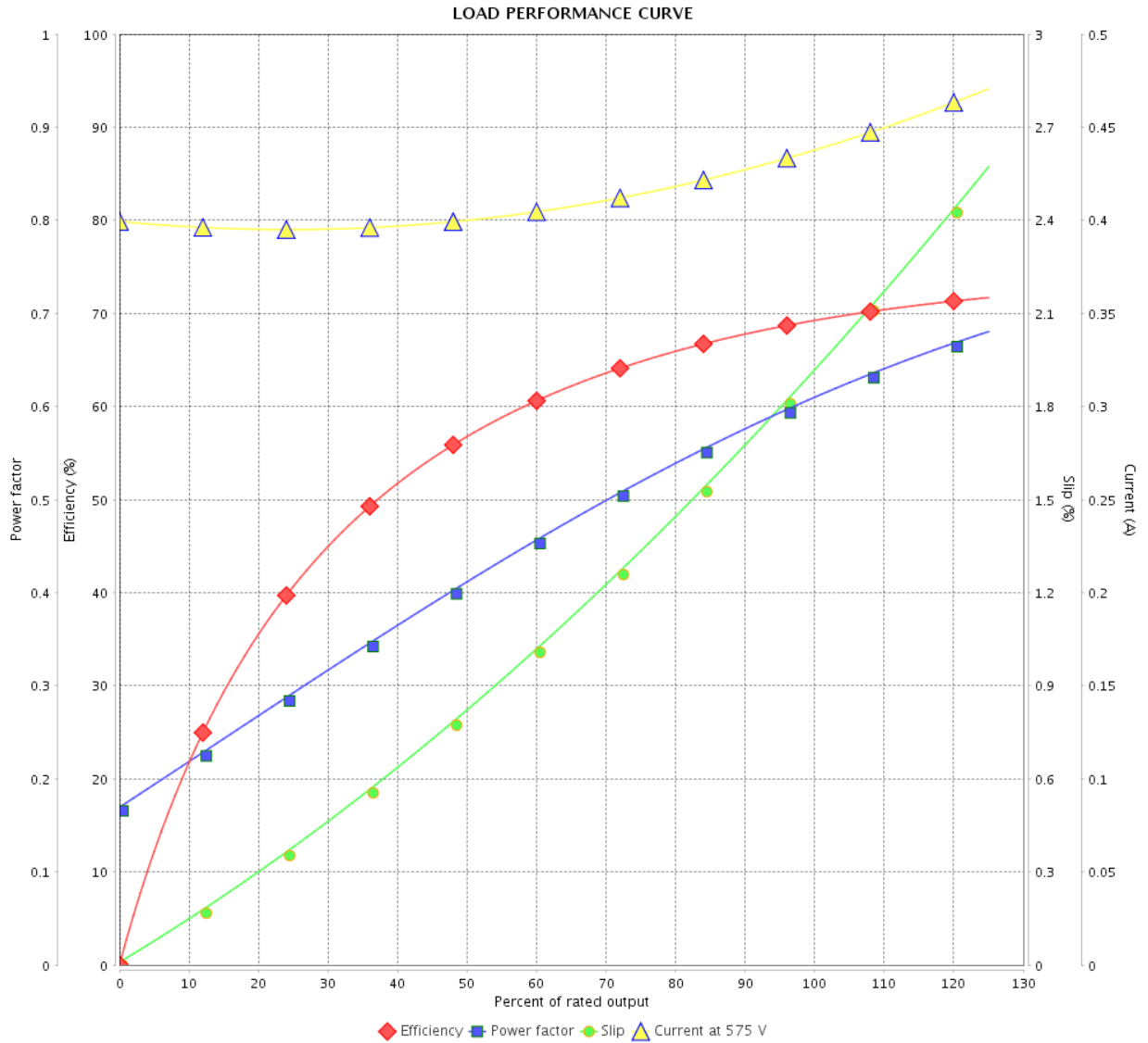
LOAD PERFORMANCE CURVE

Three Phase Induction Motor - Squirrel Cage



Customer : _____

Product line : Premium Efficiency Three-Phase Product code : 12809199
 Catalog # : .2518OT3H56CFL-S



Performance : 575 V 60 Hz 4P

Rated current : 0.426 A
 LRC : 5.9
 Rated torque : 0.744 ft.lb
 Locked rotor torque : 229 %
 Breakdown torque : 330 %
 Rated speed : 1765 rpm

Moment of inertia (J) : 0.0389 sq.ft.lb
 Duty cycle : Cont.(S1)
 Insulation class : F
 Service factor : 1.35
 Temperature rise : 80 K

Rev.	Changes Summary	Performed	Checked	Date
Performed by			Page	Revision
Checked by				
Date				

THERMAL LIMIT CURVE

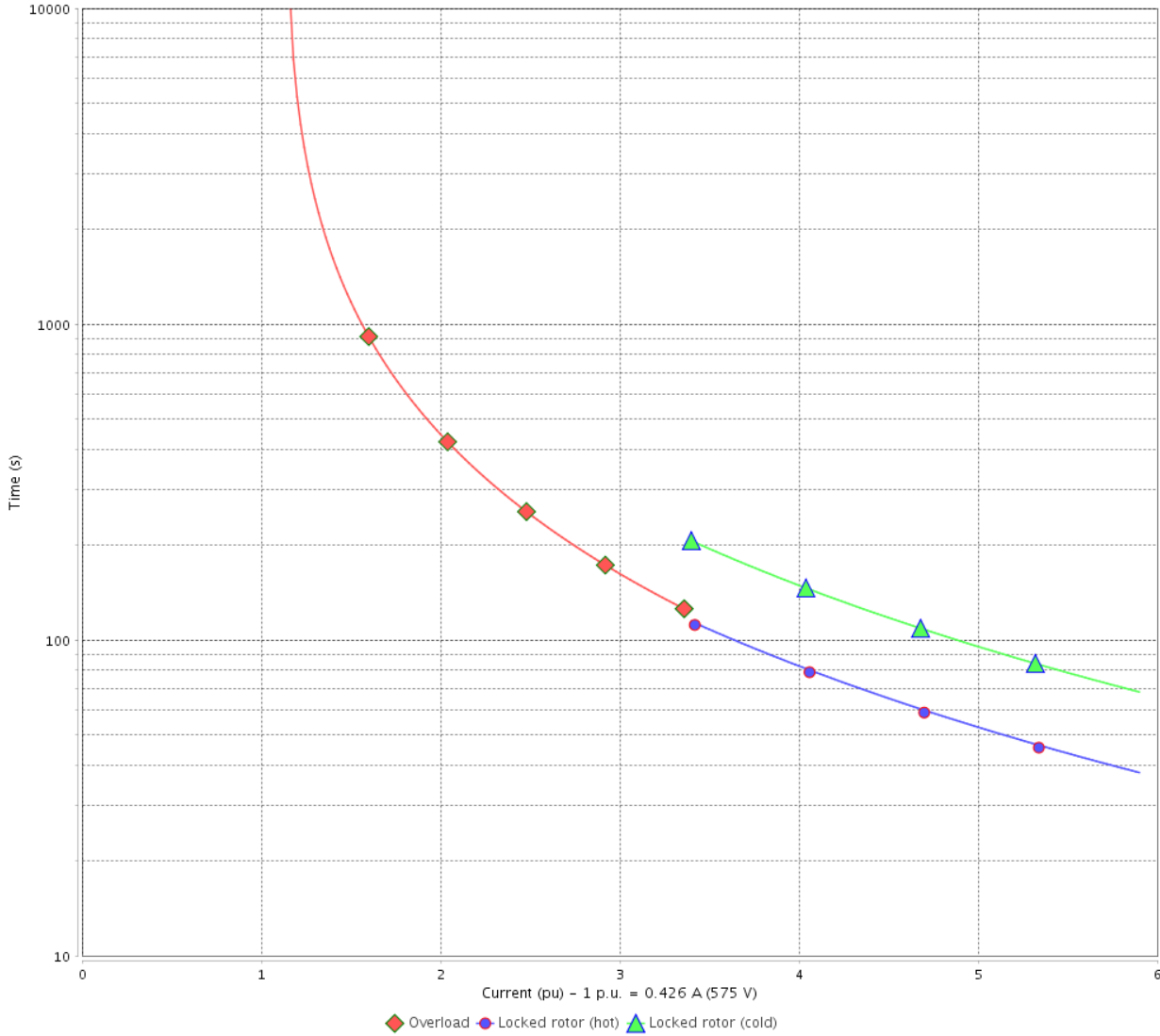
Three Phase Induction Motor - Squirrel Cage



Customer : _____

Product line : Premium Efficiency Three-Phase Product code : 12809199
 Catalog # : .2518OT3H56CFL-S

THERMAL LIMIT CURVE



Performance : 575 V 60 Hz 4P

Rated current	: 0.426 A	Moment of inertia (J)	: 0.0389 sq.ft.lb
LRC	: 5.9	Duty cycle	: Cont.(S1)
Rated torque	: 0.744 ft.lb	Insulation class	: F
Locked rotor torque	: 229 %	Service factor	: 1.35
Breakdown torque	: 330 %	Temperature rise	: 80 K
Rated speed	: 1765 rpm		

Heating constant

Cooling constant

Rev.	Changes Summary	Performed	Checked	Date
Performed by			Page 4 / 5	Revision
Checked by				
Date	11/04/2022			

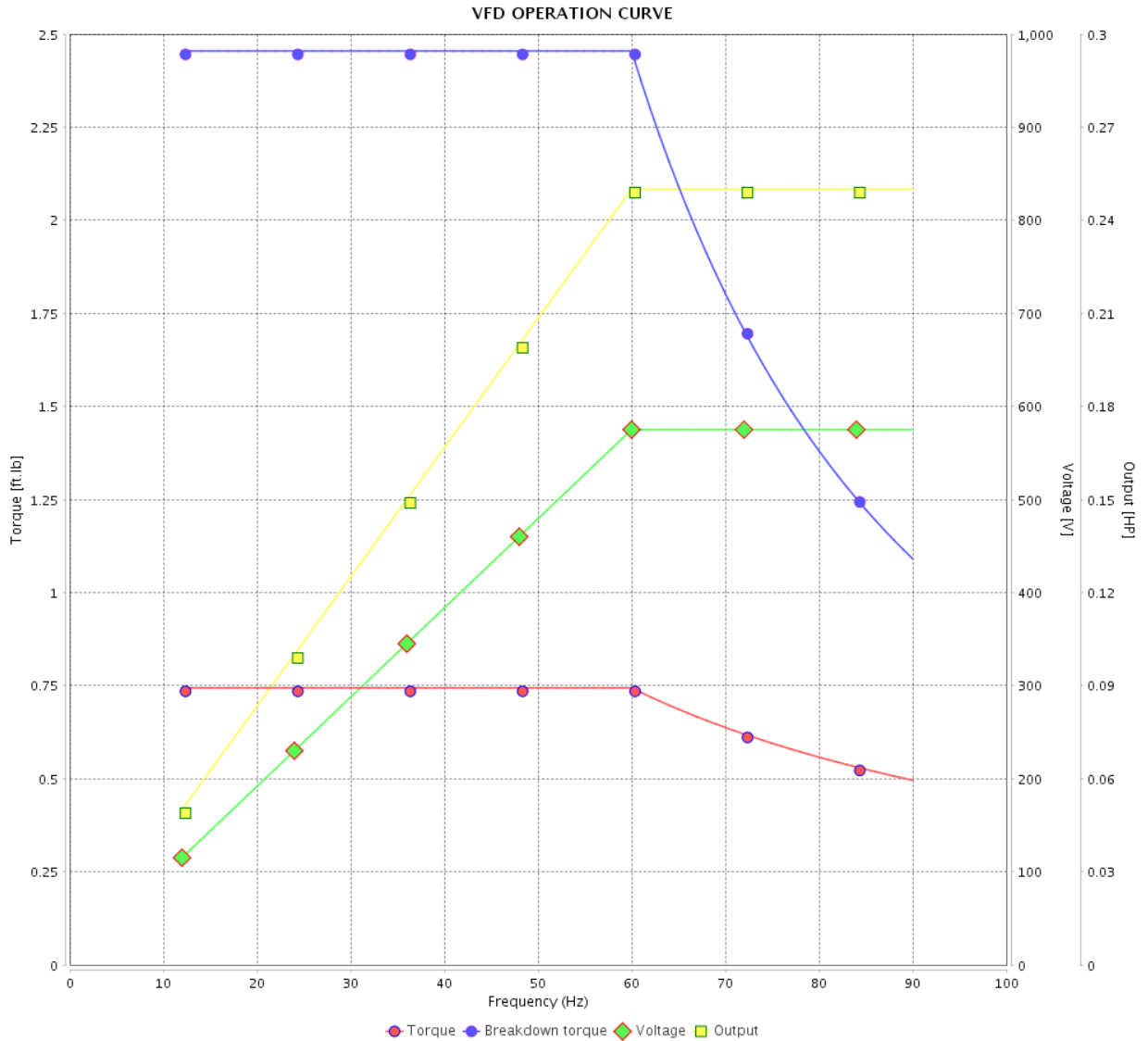
VFD OPERATION CURVE

Three Phase Induction Motor - Squirrel Cage



Customer :

Product line : Premium Efficiency Three-Phase Product code : 12809199
 Catalog # : .2518OT3H56CFL-S



Performance : 575 V 60 Hz 4P

Rated current : 0.426 A
 LRC : 5.9
 Rated torque : 0.744 ft.lb
 Locked rotor torque : 229 %
 Breakdown torque : 330 %
 Rated speed : 1765 rpm

Moment of inertia (J) : 0.0389 sq.ft.lb
 Duty cycle : Cont.(S1)
 Insulation class : F
 Service factor : 1.35
 Temperature rise : 80 K

Rev.	Changes Summary	Performed	Checked	Date
Performed by			Page 5 / 5	Revision
Checked by				
Date	11/04/2022			

1 2 3 4 5 6

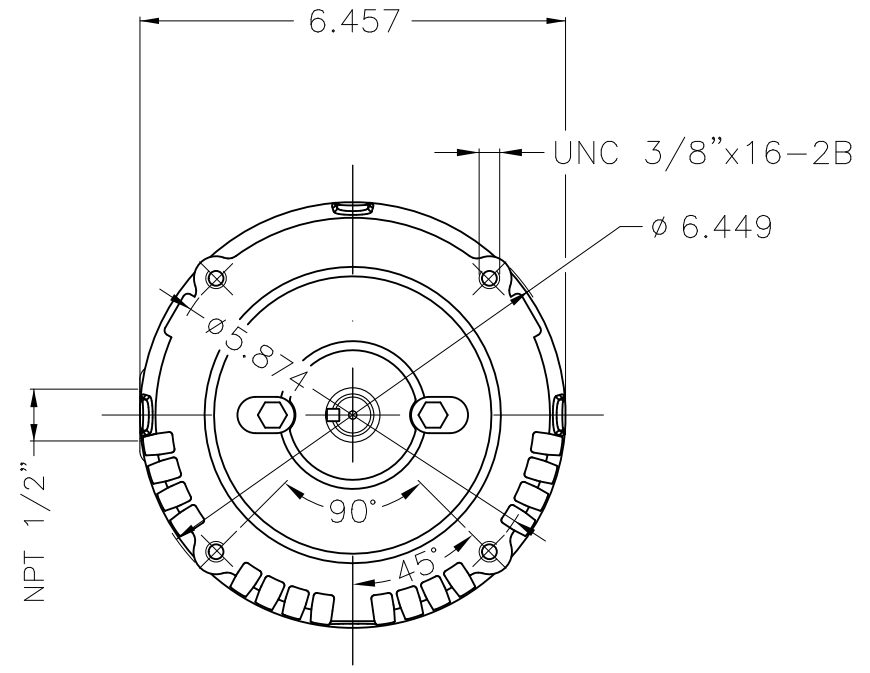
A

B

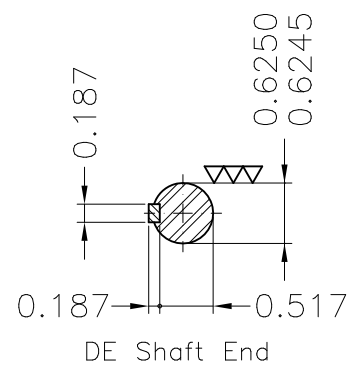
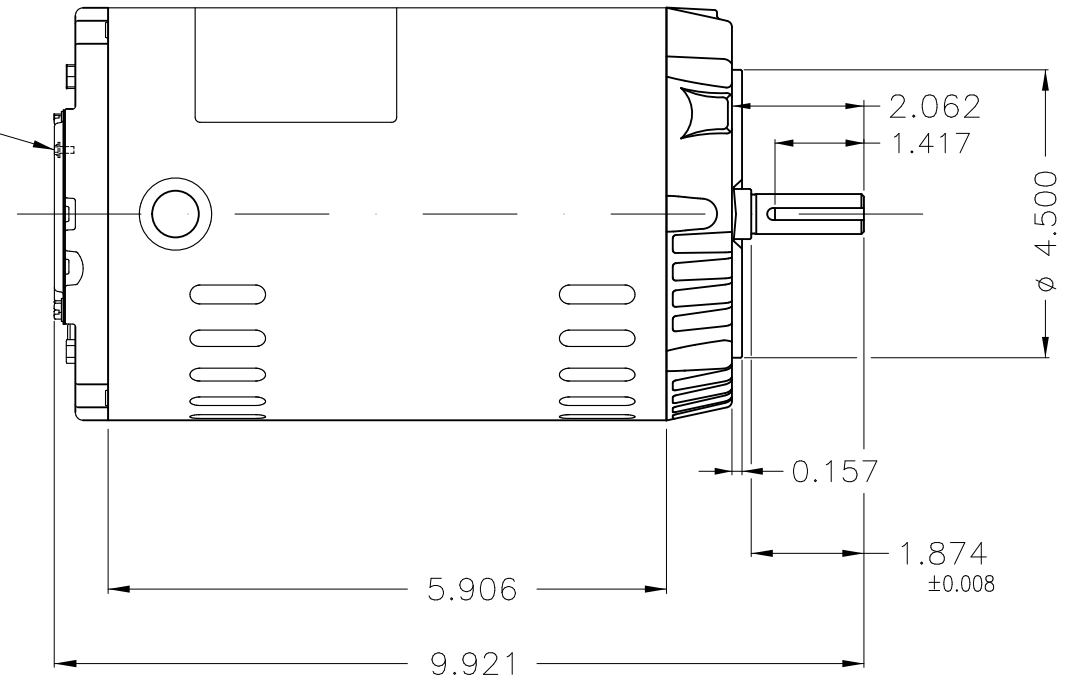
C

D

E



Grounding



Dimensions in inches

Without coating										
Mounting F-1/B14R(D)										
ECM	LOC	SUMMARY OF MODIFICATIONS				EXECUTED	CHECKED	RELEASED	DATE	VER
EXECUTED	PIRWUSER	THREE PH. MOTOR ROLLED STEEL PREM. EFF.				PREVIEW	WDD	SHEET	1 / 1	
CHECKED		FRAME 56C IP21 ODP								
RELEASED										
REL DT.		WMO	Jaragua do Sul	Product Engineering						

0.25 HP 04 Poles 60 Hz

A

XME A3