

# DATA SHEET



## Three Phase Induction Motor - Squirrel Cage

Customer	:			
Product line	: NEMA Premium Efficiency Three-Phase		Product code :	13500625
			Catalog # :	30012ET3GKD586/7-W22
Frame	: 586/7T		Locked rotor time	: 54s (cold) 30s (hot)
Output	: 300 HP (220 kW)		Temperature rise	: 80 K
Poles	: 6		Duty cycle	: Cont.(S1)
Frequency	: 60 Hz		Ambient temperature	: -20°C to +40°C
Rated voltage	: 460 V		Altitude	: 1000 m.a.s.l.
Rated current	: 360 A		Protection degree	: IP55
L. R. Amperes	: 2124 A		Cooling method	: IC411 - TEFC
LRC	: 5.9x(Code G)		Mounting	: F-1
No load current	: 165 A		Rotation <sup>1</sup>	: Both (CW and CCW)
Rated speed	: 1193 rpm		Noise level <sup>2</sup>	: 77.0 dB(A)
Slip	: 0.58 %		Starting method	: Direct On Line
Rated torque	: 1320 ft.lb		Approx. weight <sup>3</sup>	: 3495 lb
Locked rotor torque	: 220 %			
Breakdown torque	: 250 %			
Insulation class	: F			
Service factor	: 1.15			
Design	: A			
Output	25%	50%	75%	100%
Efficiency (%)	0.000	95.0	95.8	95.8
Power Factor	0.00	0.65	0.75	0.80
	Foundation loads			
			Max. traction	: 5140 lb
			Max. compression	: 8635 lb
		<u>Drive end</u>	<u>Non drive end</u>	
Bearing type	:	NU-322 C3	6319 C3	
Sealing	:	Taconite Labyrinth	Taconite Labyrinth	
Lubrication interval	:	7000 h	13000 h	
Lubricant amount	:	60 g	45 g	
Lubricant type	:	Mobil Polyrex EM		
Notes				
This revision replaces and cancel the previous one, which must be eliminated. (1) Looking the motor from the shaft end. (2) Measured at 1m and with tolerance of +3dB(A). (3) Approximate weight subject to changes after manufacturing process. (4) At 100% of full load.			These are average values based on tests with sinusoidal power supply, subject to the tolerances stipulated in NEMA MG-1.	
Rev.	Changes Summary		Performed	Checked
Performed by			Page	Revision
Checked by				
Date	12/04/2022		1 / 7	

# DATA SHEET

## Three Phase Induction Motor - Squirrel Cage



Customer : \_\_\_\_\_

### Space heater information

Voltage: 200 - 240 V

Rev.	Changes Summary	Performed	Checked	Date
Performed by				
Checked by			Page	Revision
Date	12/04/2022		2 / 7	

# TORQUE AND CURRENT VS SPEED CURVE



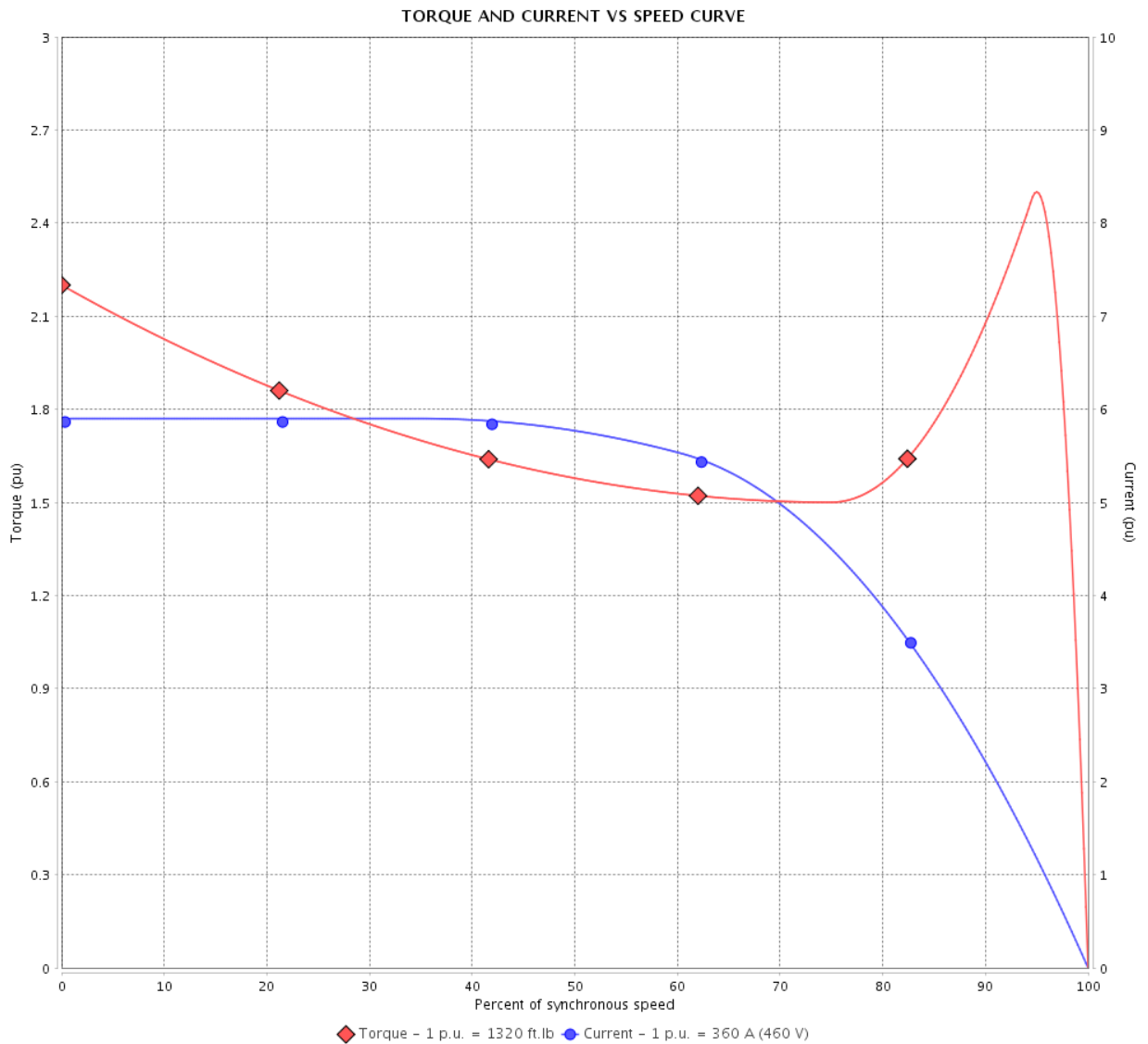
## Three Phase Induction Motor - Squirrel Cage

Customer :

Product line : NEMA Premium Efficiency Three-Phase

Product code : 13500625

Catalog # : 30012ET3GKD586/7-W22



Performance : 460 V 60 Hz 6P

Rated current : 360 A  
 LRC : 5.9  
 Rated torque : 1320 ft.lb  
 Locked rotor torque : 220 %  
 Breakdown torque : 250 %  
 Rated speed : 1193 rpm

Moment of inertia (J)  
 Duty cycle : Cont.(S1)  
 Insulation class : F  
 Service factor : 1.15  
 Temperature rise : 80 K  
 Design : A

Locked rotor time : 54s (cold) 30s (hot)

Rev.	Changes Summary	Performed	Checked	Date
Performed by			Page 3 / 7	Revision
Checked by				
Date	12/04/2022			

# LOAD PERFORMANCE CURVE

Three Phase Induction Motor - Squirrel Cage

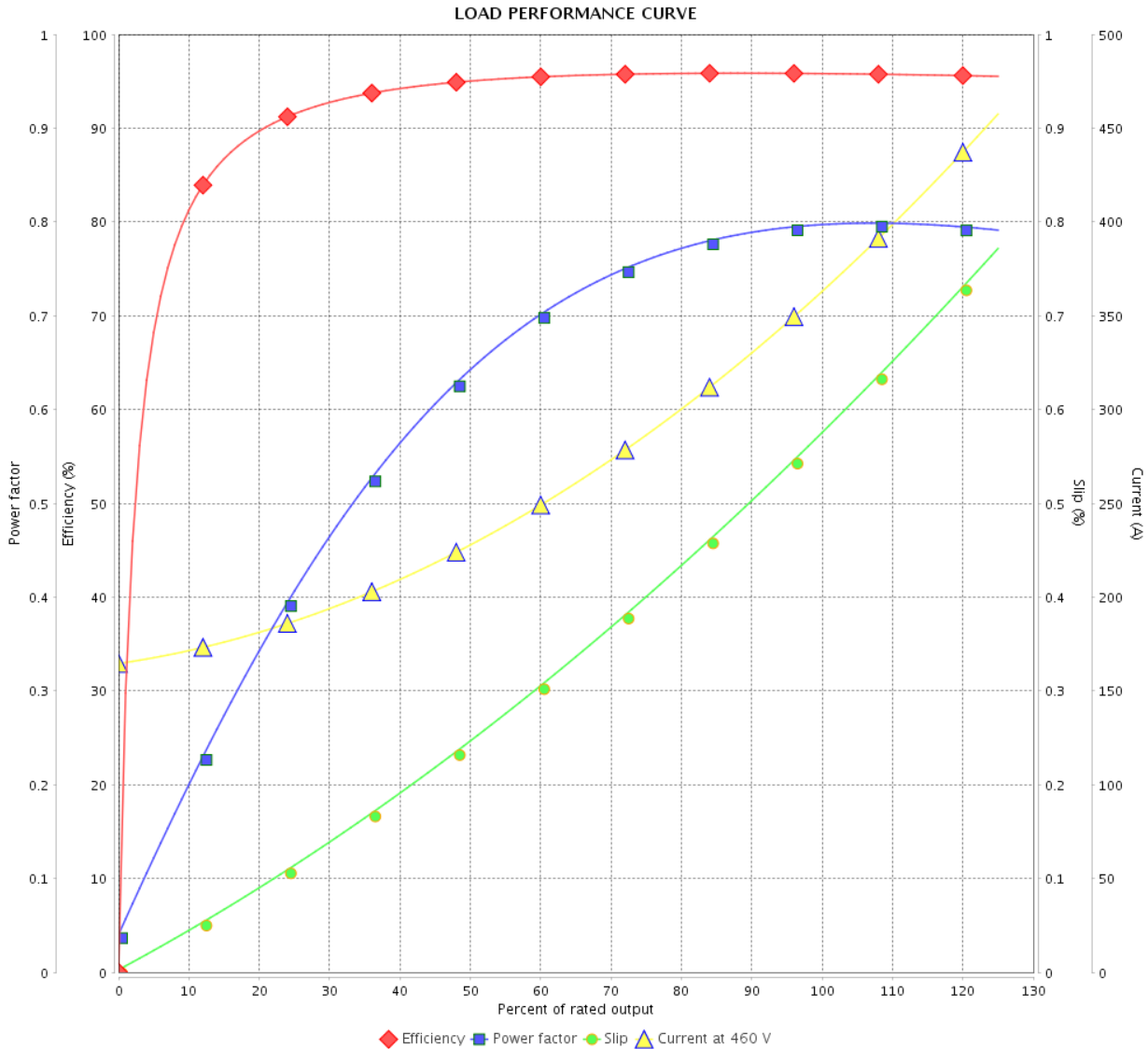


Customer :

Product line : NEMA Premium Efficiency Three-Phase

Product code : 13500625

Catalog # : 30012ET3GKD586/7-W22



Performance : 460 V 60 Hz 6P

Rated current : 360 A	Moment of inertia (J)
LRC : 5.9	Duty cycle : Cont.(S1)
Rated torque : 1320 ft.lb	Insulation class : F
Locked rotor torque : 220 %	Service factor : 1.15
Breakdown torque : 250 %	Temperature rise : 80 K
Rated speed : 1193 rpm	Design : A

Rev.	Changes Summary	Performed	Checked	Date
Performed by			Page	Revision
Checked by			4 / 7	
Date	12/04/2022			

# THERMAL LIMIT CURVE



## Three Phase Induction Motor - Squirrel Cage

Customer :

Product line : NEMA Premium Efficiency Three-Phase  
 Product code : 13500625  
 Catalog # : 30012ET3GKD586/7-W22

Performance : 460 V 60 Hz 6P

Rated current : 360 A	Moment of inertia (J)
LRC : 5.9	Duty cycle : Cont.(S1)
Rated torque : 1320 ft.lb	Insulation class : F
Locked rotor torque : 220 %	Service factor : 1.15
Breakdown torque : 250 %	Temperature rise : 80 K
Rated speed : 1193 rpm	Design : A

Heating constant

Cooling constant

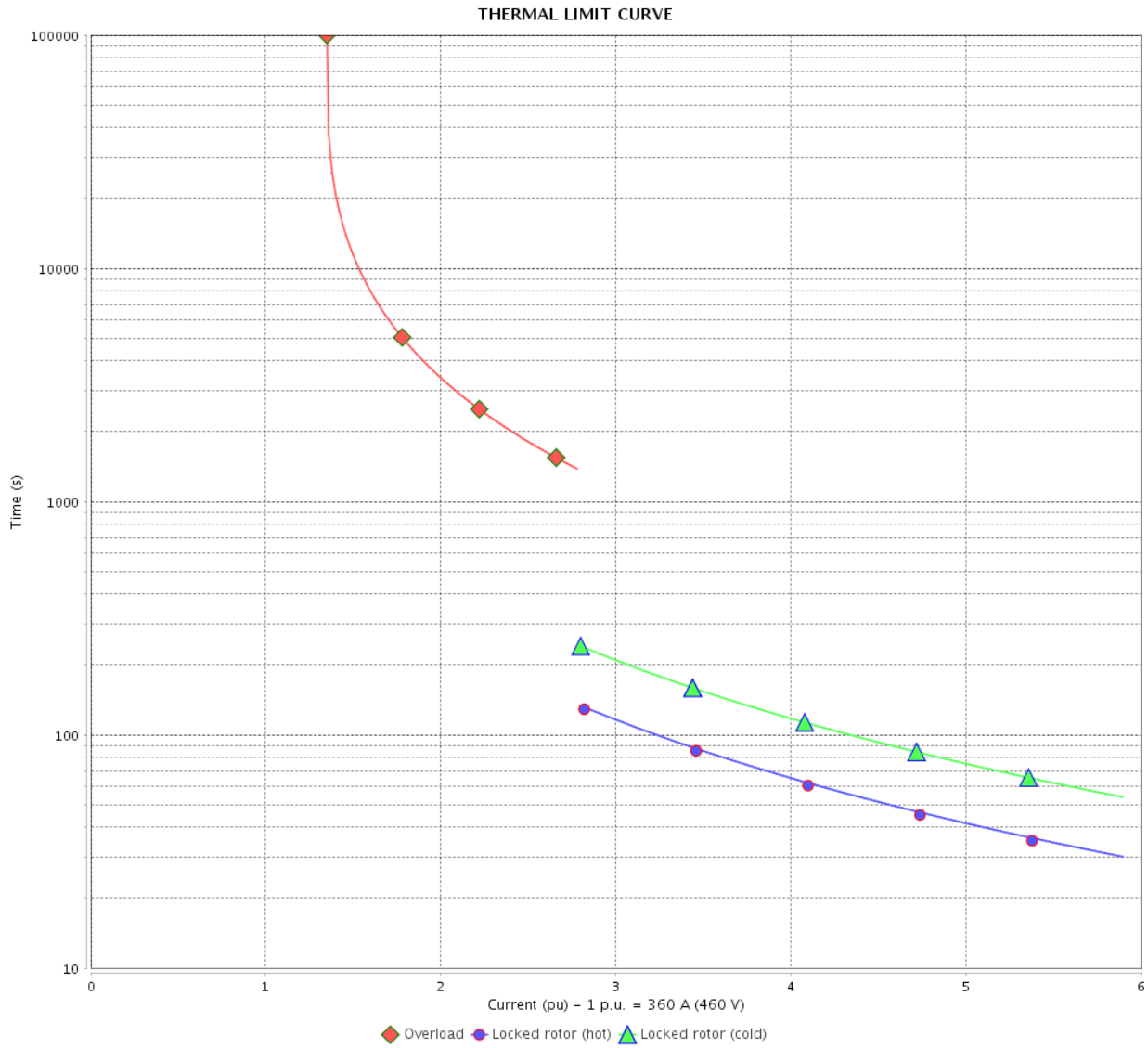
Rev.	Changes Summary	Performed	Checked	Date
Performed by			Page 5 / 7	Revision
Checked by				
Date	12/04/2022			

# THERMAL LIMIT CURVE

Three Phase Induction Motor - Squirrel Cage



Customer : \_\_\_\_\_



Rev.	Changes Summary	Performed	Checked	Date
Performed by		Page 6 / 7		Revision
Checked by				
Date				

# VFD OPERATION CURVE

## Three Phase Induction Motor - Squirrel Cage

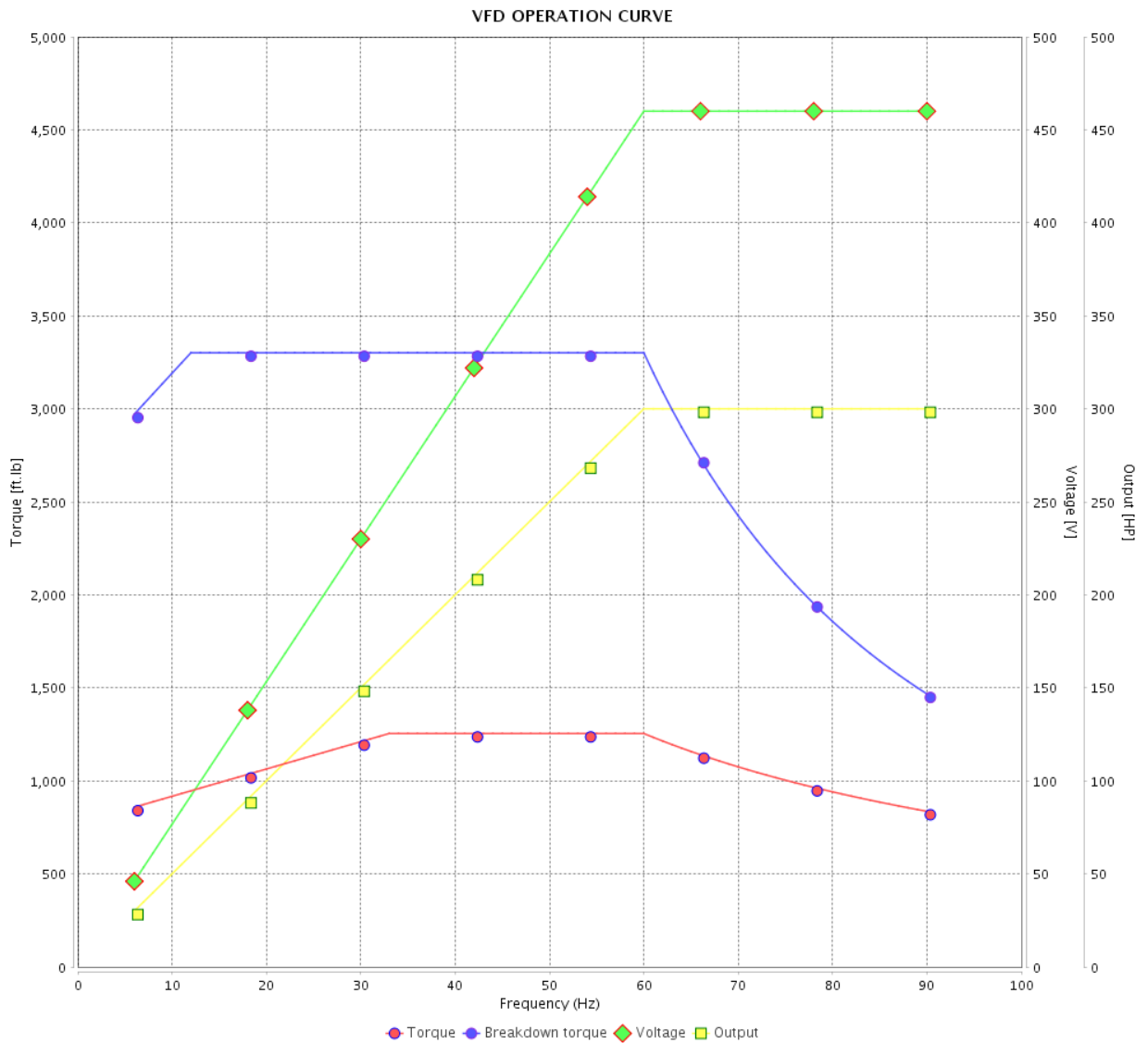


Customer :

Product line : NEMA Premium Efficiency Three-Phase

Product code : 13500625

Catalog # : 30012ET3GKD586/7-W22



Performance : 460 V 60 Hz 6P

Rated current : 360 A  
 LRC : 5.9  
 Rated torque : 1320 ft.lb  
 Locked rotor torque : 220 %  
 Breakdown torque : 250 %  
 Rated speed : 1193 rpm

Moment of inertia (J)  
 Duty cycle : Cont.(S1)  
 Insulation class : F  
 Service factor : 1.15  
 Temperature rise : 80 K  
 Design : A

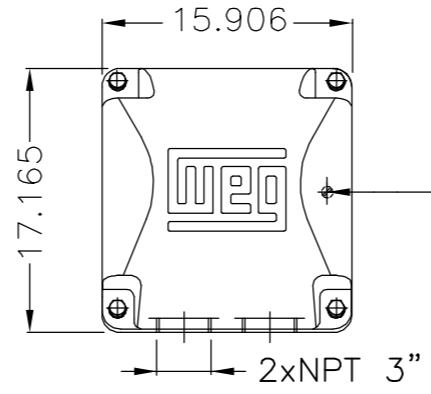
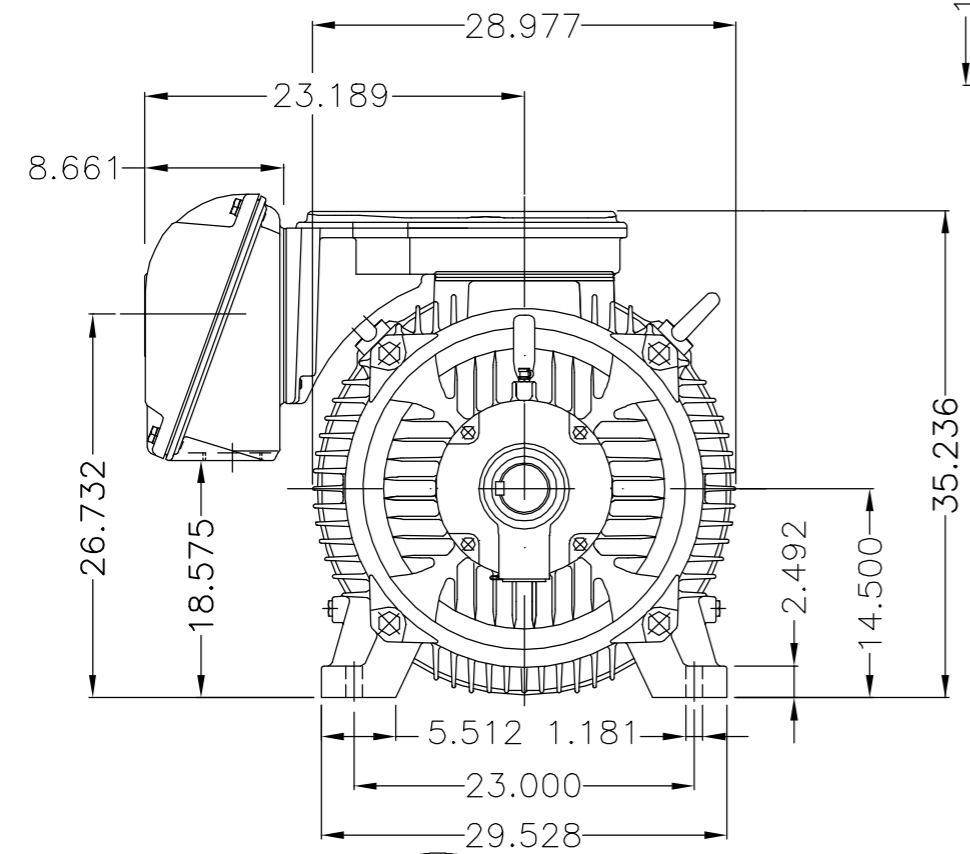
Rev.	Changes Summary	Performed	Checked	Date
Performed by				Page 7 / 7
Checked by				
Date	12/04/2022			

EIXO/SHAFT	
PADRÃO/STANDARD	X
OPCIONAL/OPTIONAL	
ESPECIAL/SPECIAL	

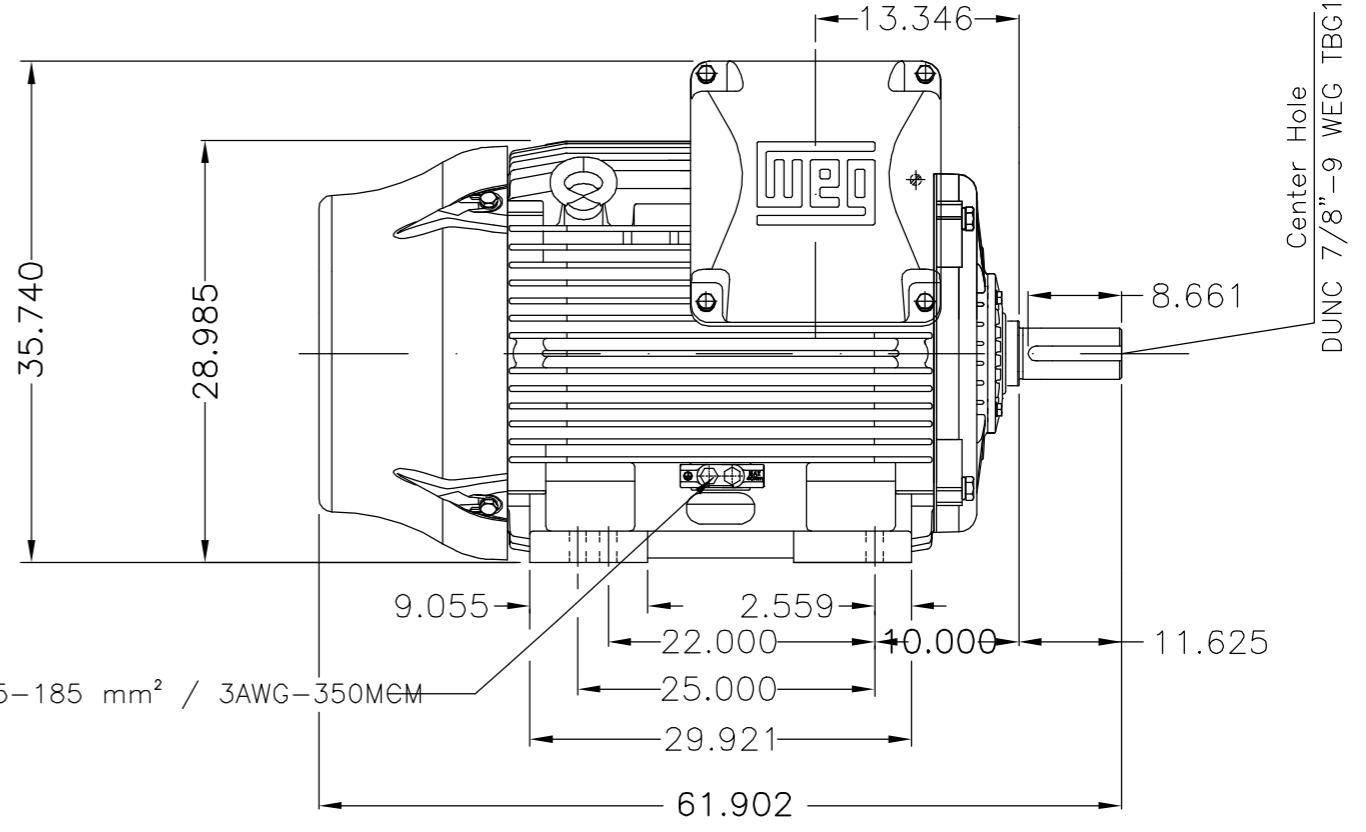
Dimensões em polegada  
Dimensions in inches

THIS IS AN UPDATED REVISION, THE PREVIOUS ONE MUST BE DISREGARDED.

A  
B  
C  
D  
E

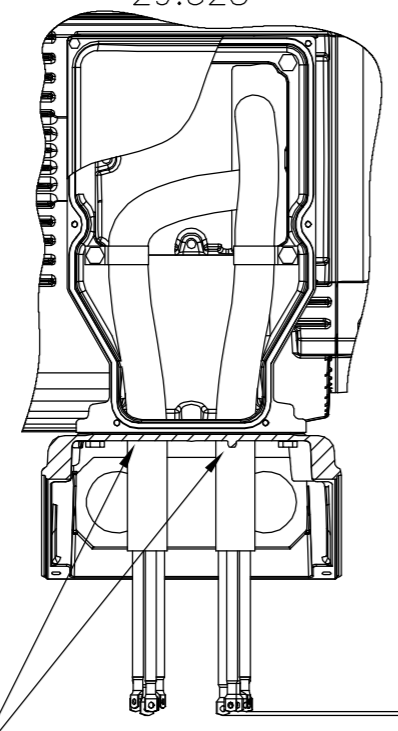


Main terminal box

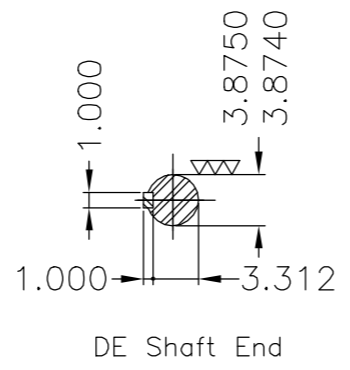


Grounding for leads 25-185 mm<sup>2</sup> / 3AWG-350MEM

Fixar o conduto no suporte com abraçadeiras.  
Fasten the conduit on support with cables ties.



±5.900  
(Desalinhamento máximo permitido)  
(Maximum misalignment allowed)



DE Shaft End

Conduite para cabos no interior do suporte da caixa de ligação									
Cables conduit inside terminal box support									
Rolamento dianteiro de rolos / DE roller bearing									
Dispositivo de travamento de eixo / Shaft locking device									
Linha do motor: Crusher Duty / Motor purpose: Crusher Duty									
Tampa traseira com mancal eletricamente isolado									
NDE endshield with electrically insulated bearing hub									
Cor RAL 5009 / Color RAL 5009									
Plano de pintura 203A / Painting plan 203A									
Forma construtiva B3D / Mounting B3R(D)									
<b>WEG EQUIPAMENTOS ELÉTRICOS S/A</b>									

E	300 HP	08 Poles	60Hz	414658029
	250 HP	08 Poles	60Hz	414668751
	400 HP	06 Poles	60Hz	414658029
	350 HP	06 Poles	60Hz	414658029
	300 HP	06 Poles	60Hz	414658029

E	500001331189	ADIC.NOTA CONDUITE/ADD NOTE CONDUIT	MENSOR	EANJOS	05.07.2017	04
D	500001323616	ALTERADO CONFORME CDP 414658625	MENSOR	JMANENTE	20.06.2017	03
C	EXECUTED	GABRIELID	SUMMARY OF MODIFICATIONS			
B	CHECKED		THREE PHASE W22 MOTOR			
A	RELEASED	JMANENTE	FRAME 586/7T IP55 TEFC			
	REL DT	09.05.2017	WMO	Jaragua do Sul	Product Engineering	

10004924169  
000 | 04  
SHEET 1 / 1

UNCONTROLLED COPY  
RELEASED  
ZME A3



MADE IN BRAZIL  
13500625



**NEMA**  
Premium  
W22



FOR SAFE AREA  
Mod.TE1BFOXON  
CC029A



Class I, Div 2, Gr A, B, C and D - T3  
Class I, Zone 2, IIC - T3  
Class II, Div 2, Gr F and G - T3C  
For use on PWM: Gr. A, B, C and D,  
VT 1000:1, CT 6:1, 1.00SF - T2B

MODEL 30012ET3GKD586/7-W22

Inverter Duty Motor  
Severe Duty

PH3 60Hz Fr. 586/7T 1000m.a.s.l. IP55 TEFC 3749lb

V 460

A 360

HP 300

kW 220

SF 1.15

SFA 414

RPM 1193

PF 0.80

AMB 40°C

INS cl. F DT80K

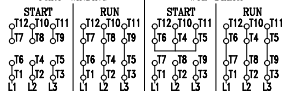
NEMA NOM EFF 95.8%

DUTY CONT.

DES A Code G

PART-WINDING

WYE-DELTA



→ NU-322-C3 (60g)

→ 6319-C3 (45g)



MOBIL POLYREX EM (7000h)

