

DATA SHEET



Three Phase Induction Motor - Squirrel Cage

Customer :																			
Product line	: NEMA Premium Efficiency Three-Phase																		
Product code :	11435296																		
Catalog # :	30012ST3QIE449T-W22																		
Frame : L447/9T Output : 300 HP (220 kW) Poles : 6 Frequency : 60 Hz Rated voltage : 460 V Rated current : 351 A L. R. Amperes : 2352 A LRC : 6.7x(Code G) No load current : 130 A Rated speed : 1190 rpm Slip : 0.83 % Rated torque : 1320 ft.lb Locked rotor torque : 240 % Breakdown torque : 250 % Insulation class : F Service factor : 1.15 Design : B	Locked rotor time : 32s (cold) 18s (hot) Temperature rise : 80 K Duty cycle : Cont.(S1) Ambient temperature : -20°C to +40°C Altitude : 1000 m.a.s.l. Protection degree : IP55 Cooling method : IC411 - TEFC Mounting : F-1 Rotation ¹ : Both (CW and CCW) Starting method : Direct On Line Approx. weight ³ : 3574 lb																		
Output	25% 50% 75% 100%																		
Efficiency (%)	0.000 95.0 95.8 95.8																		
Power Factor	0.00 0.69 0.78 0.82																		
Foundation loads																			
Max. traction	: 7036 lb																		
Max. compression	: 10610 lb																		
	<table border="0"> <tr> <td></td> <td style="text-align: center;"><u>Drive end</u></td> <td style="text-align: center;"><u>Non drive end</u></td> </tr> <tr> <td>Bearing type :</td> <td>6322 C3</td> <td>6319 C3</td> </tr> <tr> <td>Sealing :</td> <td>Inpro/Seal</td> <td>Inpro/Seal</td> </tr> <tr> <td>Lubrication interval :</td> <td>11000 h</td> <td>13000 h</td> </tr> <tr> <td>Lubricant amount :</td> <td>60 g</td> <td>45 g</td> </tr> <tr> <td>Lubricant type :</td> <td colspan="2" style="text-align: center;">Mobil Polyrex EM</td> </tr> </table>		<u>Drive end</u>	<u>Non drive end</u>	Bearing type :	6322 C3	6319 C3	Sealing :	Inpro/Seal	Inpro/Seal	Lubrication interval :	11000 h	13000 h	Lubricant amount :	60 g	45 g	Lubricant type :	Mobil Polyrex EM	
	<u>Drive end</u>	<u>Non drive end</u>																	
Bearing type :	6322 C3	6319 C3																	
Sealing :	Inpro/Seal	Inpro/Seal																	
Lubrication interval :	11000 h	13000 h																	
Lubricant amount :	60 g	45 g																	
Lubricant type :	Mobil Polyrex EM																		
Notes																			
This revision replaces and cancel the previous one, which must be eliminated. (1) Looking the motor from the shaft end. (2) Measured at 1m and with tolerance of +3dB(A). (3) Approximate weight subject to changes after manufacturing process. (4) At 100% of full load.																			
These are average values based on tests with sinusoidal power supply, subject to the tolerances stipulated in NEMA MG-1.																			
Rev.	Changes Summary	Performed	Checked	Date															
Performed by																			
Checked by			Page	Revision															
Date	13/04/2022		1 / 6																

TORQUE AND CURRENT VS SPEED CURVE

Three Phase Induction Motor - Squirrel Cage



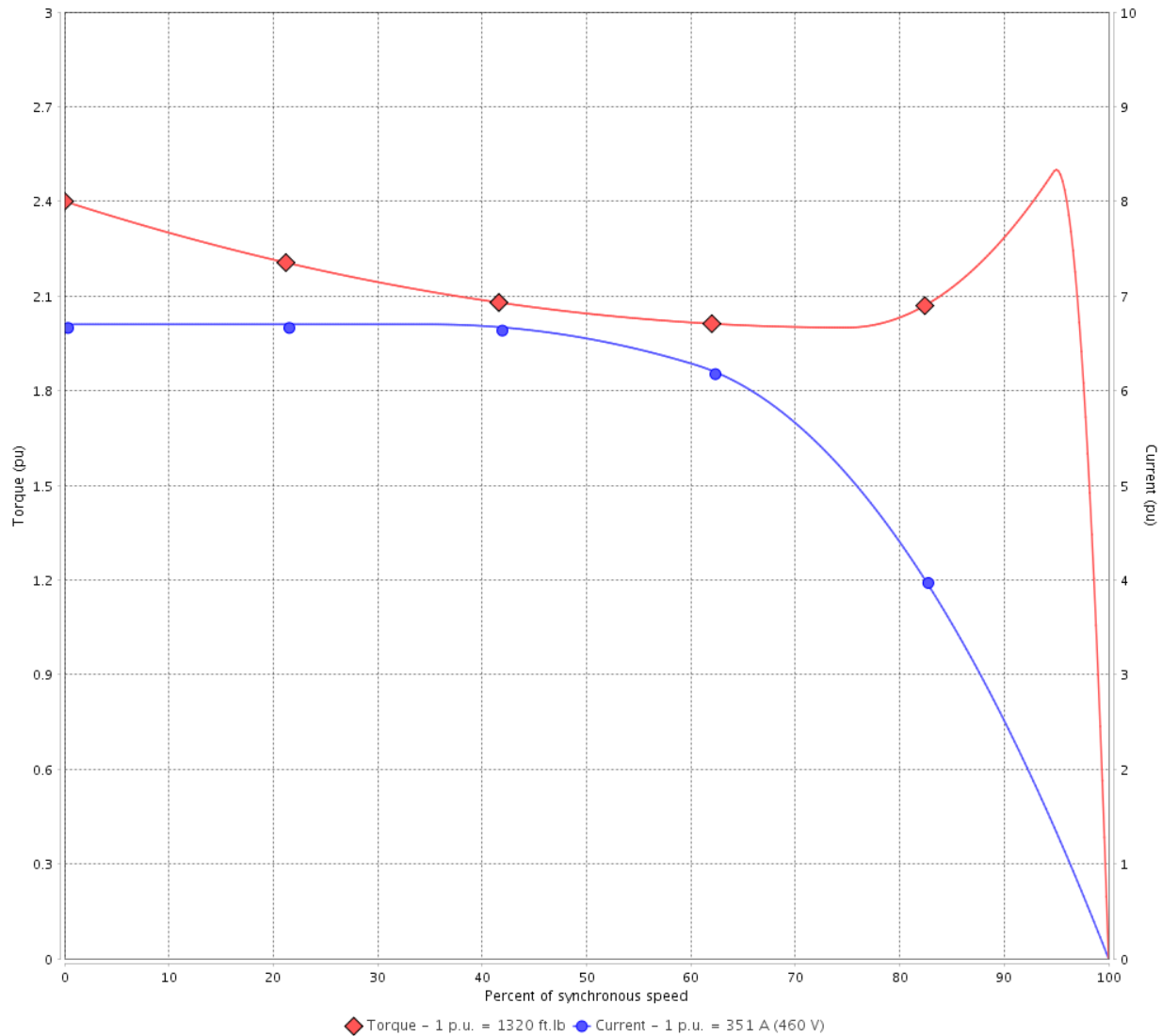
Customer :

Product line : NEMA Premium Efficiency Three-Phase

Product code : 11435296

Catalog # : 30012ST3QIE449T-W22

TORQUE AND CURRENT VS SPEED CURVE



Performance : 460 V 60 Hz 6P

Rated current	: 351 A	Moment of inertia (J)	
LRC	: 6.7	Duty cycle	: Cont.(S1)
Rated torque	: 1320 ft.lb	Insulation class	: F
Locked rotor torque	: 240 %	Service factor	: 1.15
Breakdown torque	: 250 %	Temperature rise	: 80 K
Rated speed	: 1190 rpm	Design	: B

Locked rotor time : 32s (cold) 18s (hot)

Rev.	Changes Summary	Performed	Checked	Date
Performed by			Page 2 / 6	Revision
Checked by				
Date	13/04/2022			

LOAD PERFORMANCE CURVE

Three Phase Induction Motor - Squirrel Cage

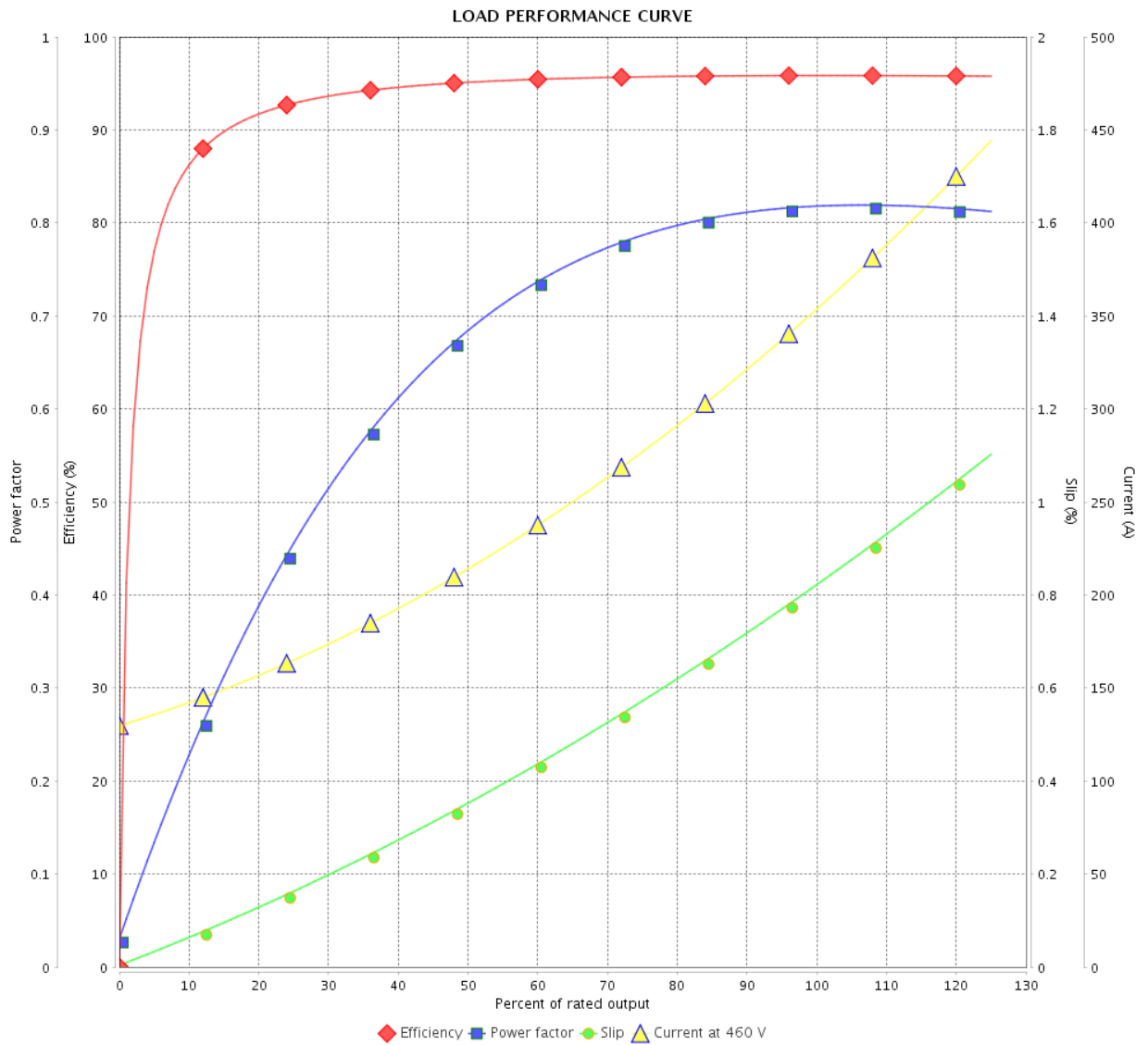


Customer : _____

Product line : NEMA Premium Efficiency Three-Phase

Product code : 11435296

Catalog # : 30012ST3QIE449T-W22



Performance : 460 V 60 Hz 6P

Rated current : 351 A
 LRC : 6.7
 Rated torque : 1320 ft.lb
 Locked rotor torque : 240 %
 Breakdown torque : 250 %
 Rated speed : 1190 rpm

Moment of inertia (J)
 Duty cycle : Cont.(S1)
 Insulation class : F
 Service factor : 1.15
 Temperature rise : 80 K
 Design : B

Rev.	Changes Summary	Performed	Checked	Date
Performed by		Page		Revision
Checked by		3 / 6		
Date		13/04/2022		

THERMAL LIMIT CURVE



Three Phase Induction Motor - Squirrel Cage

Customer :

Product line : NEMA Premium Efficiency Three-Phase
Product code : 11435296
Catalog # : 30012ST3QIE449T-W22

Performance : 460 V 60 Hz 6P

Rated current	: 351 A	Moment of inertia (J)	
LRC	: 6.7	Duty cycle	: Cont.(S1)
Rated torque	: 1320 ft.lb	Insulation class	: F
Locked rotor torque	: 240 %	Service factor	: 1.15
Breakdown torque	: 250 %	Temperature rise	: 80 K
Rated speed	: 1190 rpm	Design	: B

Heating constant

Cooling constant

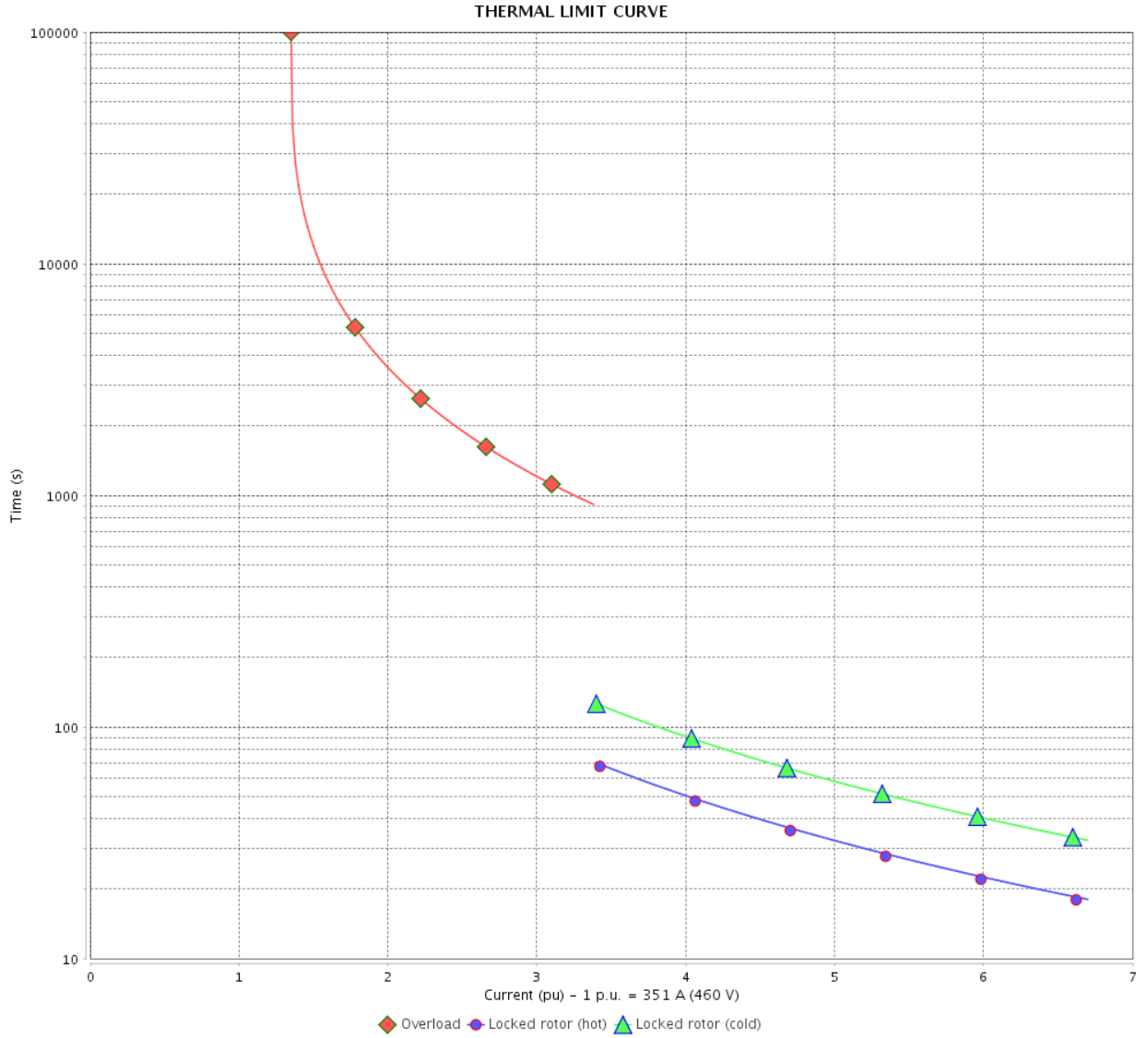
Rev.	Changes Summary	Performed	Checked	Date
Performed by				
Checked by			Page	Revision
Date	13/04/2022		4 / 6	

THERMAL LIMIT CURVE

Three Phase Induction Motor - Squirrel Cage



Customer : _____



Rev.	Changes Summary	Performed	Checked	Date
Performed by		Page 5 / 6		Revision
Checked by				
Date				

VFD OPERATION CURVE

Three Phase Induction Motor - Squirrel Cage



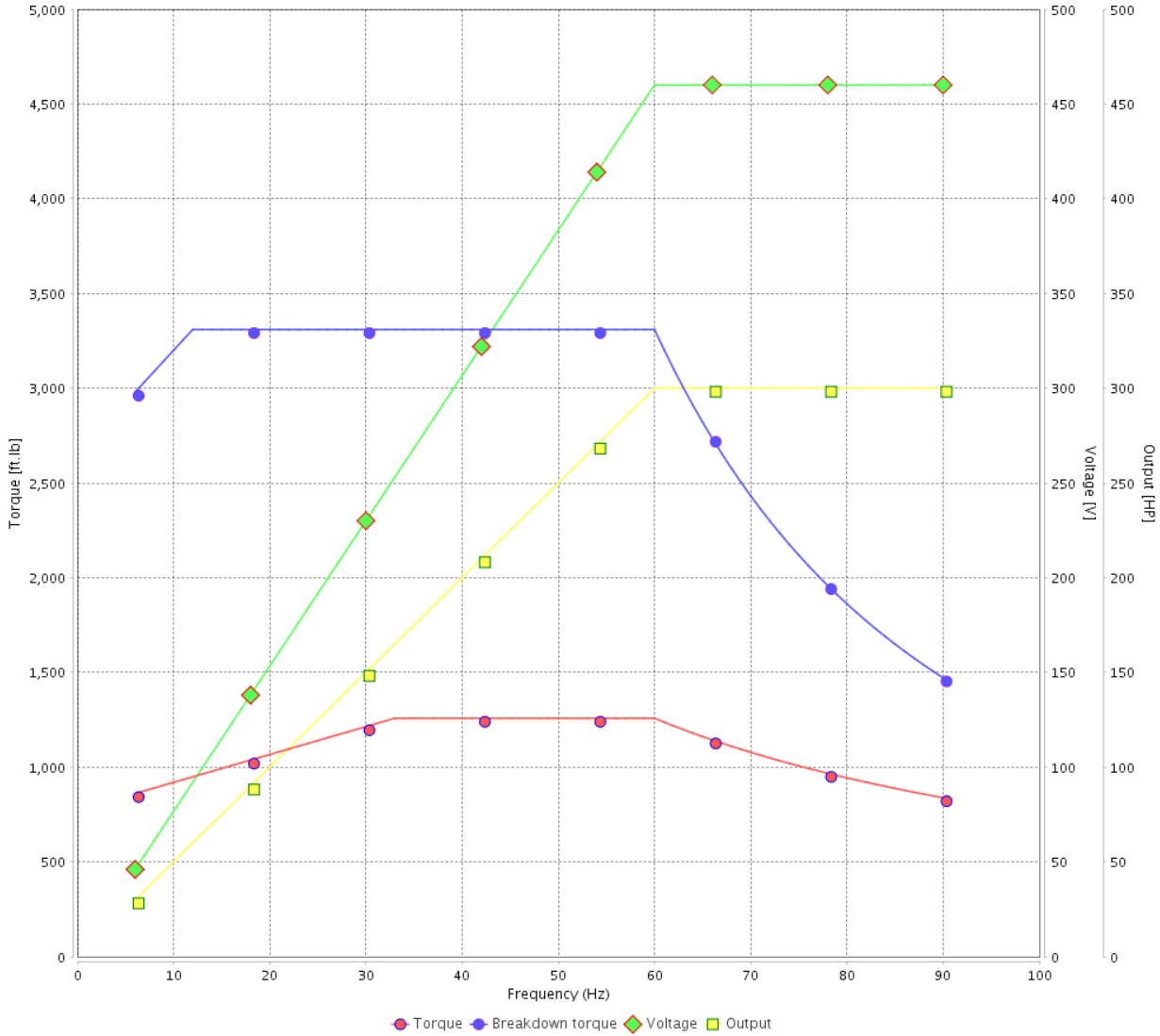
Customer :

Product line : NEMA Premium Efficiency Three-Phase

Product code : 11435296

Catalog # : 30012ST3QIE449T-W22

VFD OPERATION CURVE



Performance : 460 V 60 Hz 6P

Rated current : 351 A
 LRC : 6.7
 Rated torque : 1320 ft.lb
 Locked rotor torque : 240 %
 Breakdown torque : 250 %
 Rated speed : 1190 rpm

Moment of inertia (J)
 Duty cycle : Cont.(S1)
 Insulation class : F
 Service factor : 1.15
 Temperature rise : 80 K
 Design : B

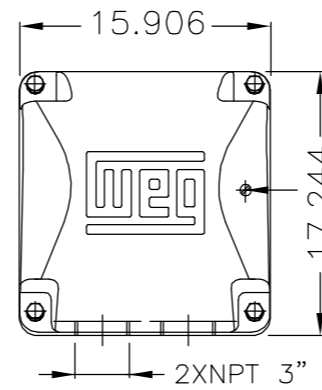
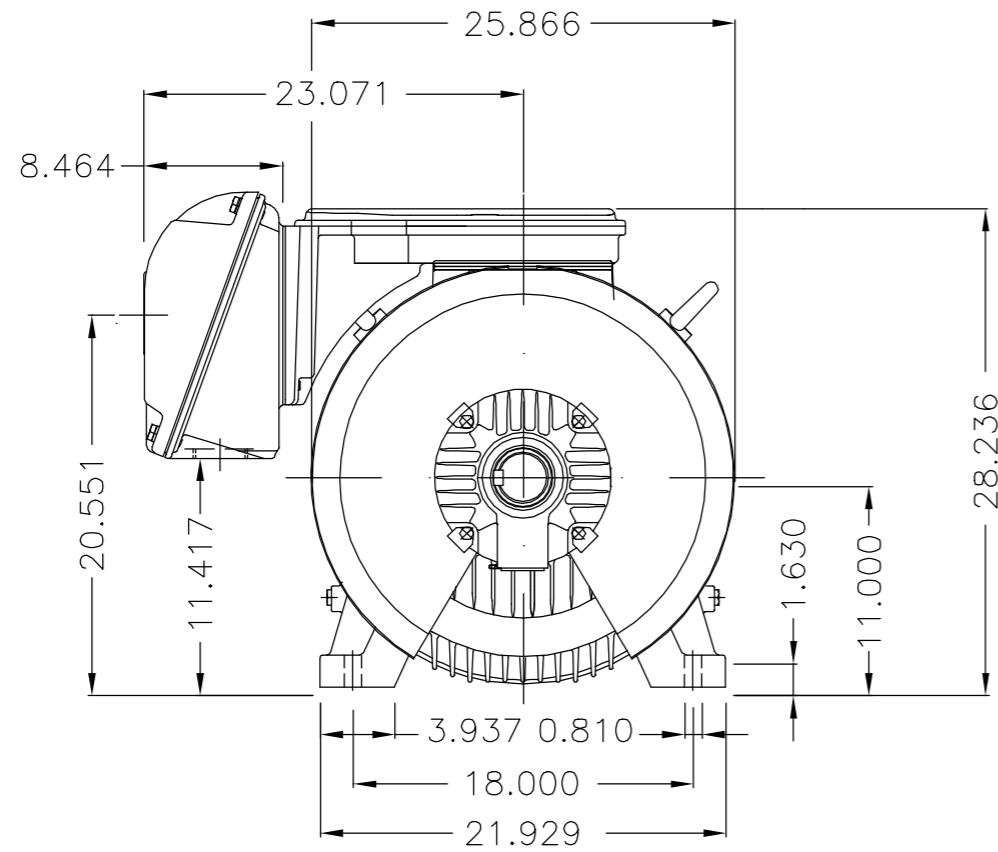
Rev.	Changes Summary	Performed	Checked	Date
Performed by			Page 6 / 6	Revision
Checked by				
Date	13/04/2022			

No reproduction of this drawing is allowed without written permission of WEG Motores

EIXO	
PADRÃO	X
OPCIONAL	
ESPECIAL	

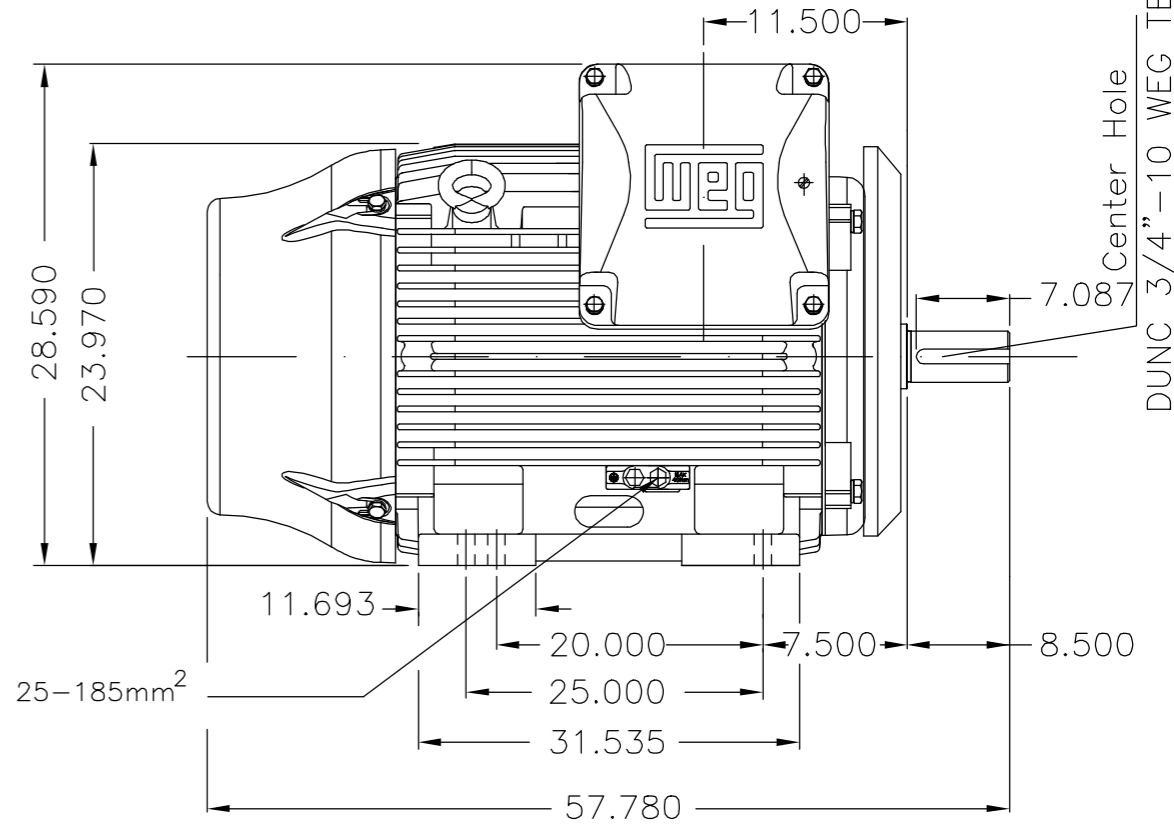
Dimensões em polegada
Dimensions in inch

THIS IS AN UPDATED REVISION, THE PREVIOUS ONE MUST BE DISREGARDED.

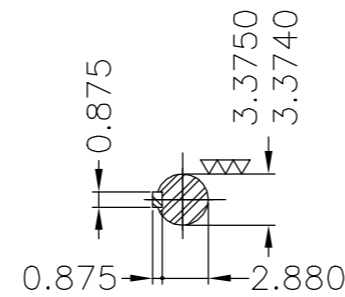


Main terminal box

Grounding for leads 35-70mm²



Grounding for leads 25-185mm²



DE Shaft End

Plano de pintura 202E / Painting plan 202E						
Forma construtiva B3D / Mounting B3R(D)						
WEG ELECTRIC CORPORATION - WEC						
500001619525		ALTERADO CONF. CLAIM 415525398	JJULIANA	ALISSON	ALISSON	05.09.2019 04
500001385643		Alt. Conforme claim 414857097	PKREYSSIG	FRANCINES	FRANCINES	21.11.2017 03
ECM	LOC	SUMMARY OF MODIFICATIONS	EXECUTED	CHECKED	RELEASED	DATE VER
EXECUTED	ALCIDESZ	THREE PH. W22 NEMA P.EFF MOTOR IIEEE841 FRAME L447/9T IP55	10000852600			SHEET 1 / 1
CHECKED	ADEMILSON		000	04		
RELEASED	ADEMILSON					
REL DT	21.05.2010	WMO	JARAGUÁ DO SUL	ENG. MOTORES INDUSTRIAIS		

300 HP 06 Poles 60Hz 402632389/0 ELET/MEC



NEMA
Premium
W22



FOR SAFE AREA
Mod.TE1BFOXON
CC029A



Class I, Div 2, Gr A, B, C and D - T3
Class I, Zone 2, IIC - T3
Class II, Div 2, Gr F and G - T3C
For use on PWM: Gr. A, B, C and D,
VT 1000:1, CT 6:1, 1.00SF - T2B

MODEL 30012ST3QIE449T-W22



Inverter Duty Motor
Severe Duty

MADE IN BRAZIL
11435296

PH3 60Hz Fr. L447/9T 1000m.a.s.l. IP55 TEFC 3559lb

V 460

A 351

HP 300

kW 220

SF 1.15

SFA 404

RPM 1190

PF 0.82

AMB 40°C

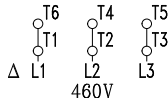
INS cl. F DT80K

NEMA NOM EFF 95.8%

DUTY CONT.

DES B Code G

GUARANT. EFF 95.0%



→ 6322-C3 (60g) 110BC03X30

→ 6319-C3 (45g) 95BC03X30



MOBIL POLYREX EM (11000h)

