

# DATA SHEET



## Three Phase Induction Motor - Squirrel Cage

Customer :																			
Product line	: NEMA Premium Efficiency Three-Phase																		
Product code :	13500626																		
Catalog # :	30018ET3GKD449T-W22																		
Frame : 447/9T Output : 300 HP (220 kW) Poles : 4 Frequency : 60 Hz Rated voltage : 460 V Rated current : 330 A L. R. Amperes : 2145 A LRC : 6.5x(Code G) No load current : 105 A Rated speed : 1780 rpm Slip : 1.11 % Rated torque : 885 ft.lb Locked rotor torque : 250 % Breakdown torque : 250 % Insulation class : F Service factor : 1.15 Design : A	Locked rotor time : 28s (cold) 16s (hot) Temperature rise : 80 K Duty cycle : Cont.(S1) Ambient temperature : -20°C to +40°C Altitude : 1000 m.a.s.l. Protection degree : IP55 Cooling method : IC411 - TEFC Mounting : F-1 Rotation <sup>1</sup> : Both (CW and CCW) Noise level <sup>2</sup> : 75.0 dB(A) Starting method : Direct On Line Approx. weight <sup>3</sup> : 2864 lb																		
Output	25% 50% 75% 100%																		
Efficiency (%)	0.000 95.8 96.2 96.2																		
Power Factor	0.00 0.77 0.84 0.87																		
Foundation loads																			
Max. traction	: 4466 lb																		
Max. compression	: 7331 lb																		
	<table border="0"> <tr> <td></td> <td style="text-align: center;"><u>Drive end</u></td> <td style="text-align: center;"><u>Non drive end</u></td> </tr> <tr> <td>Bearing type :</td> <td>NU-322 C3</td> <td>6319 C3</td> </tr> <tr> <td>Sealing :</td> <td>WSeal</td> <td>WSeal</td> </tr> <tr> <td>Lubrication interval :</td> <td>4000 h</td> <td>8000 h</td> </tr> <tr> <td>Lubricant amount :</td> <td>60 g</td> <td>45 g</td> </tr> <tr> <td>Lubricant type :</td> <td colspan="2" style="text-align: center;">Mobil Polyrex EM</td> </tr> </table>		<u>Drive end</u>	<u>Non drive end</u>	Bearing type :	NU-322 C3	6319 C3	Sealing :	WSeal	WSeal	Lubrication interval :	4000 h	8000 h	Lubricant amount :	60 g	45 g	Lubricant type :	Mobil Polyrex EM	
	<u>Drive end</u>	<u>Non drive end</u>																	
Bearing type :	NU-322 C3	6319 C3																	
Sealing :	WSeal	WSeal																	
Lubrication interval :	4000 h	8000 h																	
Lubricant amount :	60 g	45 g																	
Lubricant type :	Mobil Polyrex EM																		
Notes																			
This revision replaces and cancel the previous one, which must be eliminated. (1) Looking the motor from the shaft end. (2) Measured at 1m and with tolerance of +3dB(A). (3) Approximate weight subject to changes after manufacturing process. (4) At 100% of full load.																			
These are average values based on tests with sinusoidal power supply, subject to the tolerances stipulated in NEMA MG-1.																			
Rev.	Changes Summary	Performed	Checked	Date															
Performed by																			
Checked by			Page	Revision															
Date	12/04/2022		1 / 6																

# TORQUE AND CURRENT VS SPEED CURVE

## Three Phase Induction Motor - Squirrel Cage



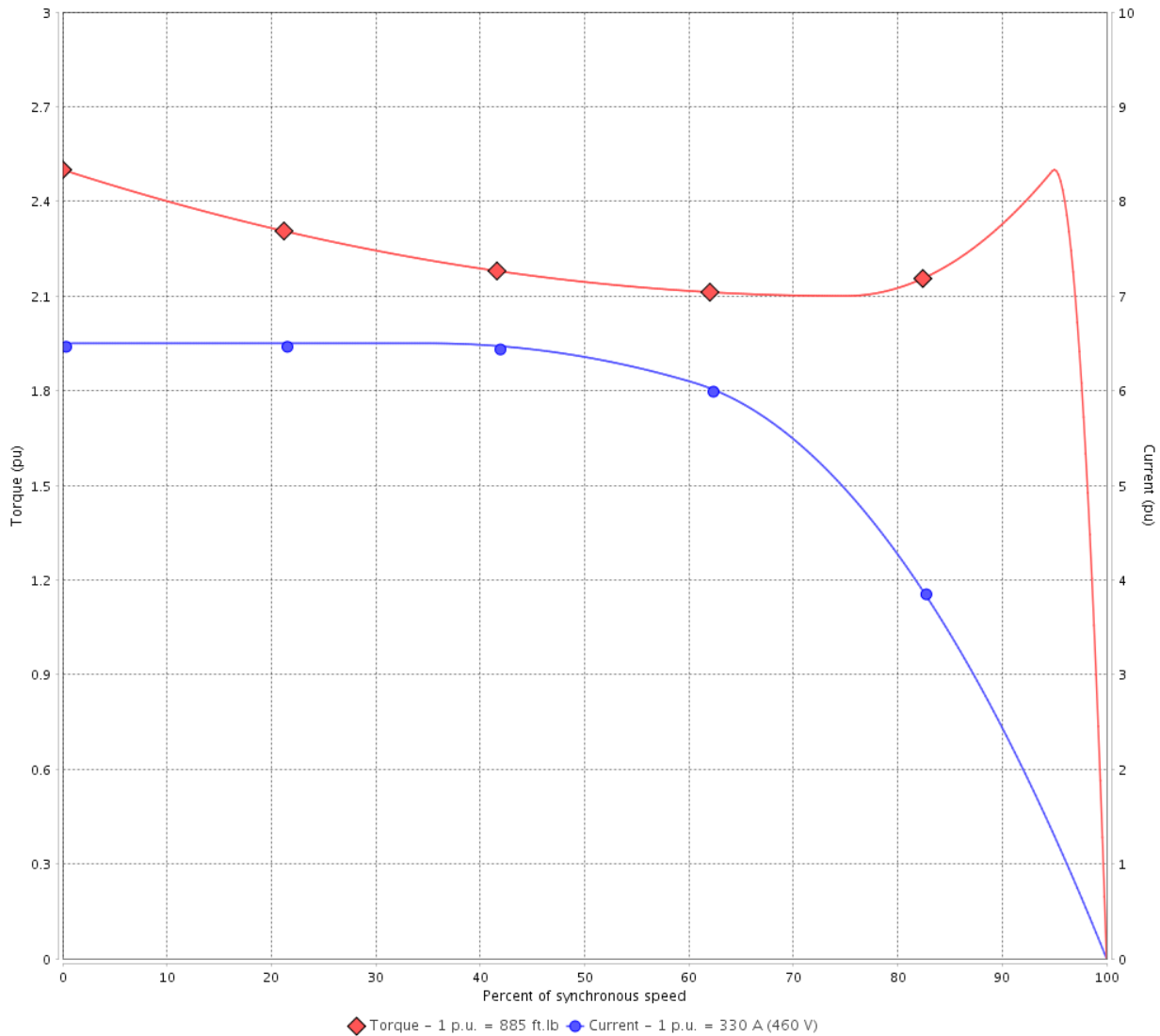
Customer :

Product line : NEMA Premium Efficiency Three-Phase

Product code : 13500626

Catalog # : 30018ET3GKD449T-W22

TORQUE AND CURRENT VS SPEED CURVE



Performance : 460 V 60 Hz 4P

Rated current	: 330 A	Moment of inertia (J)	
LRC	: 6.5	Duty cycle	: Cont.(S1)
Rated torque	: 885 ft.lb	Insulation class	: F
Locked rotor torque	: 250 %	Service factor	: 1.15
Breakdown torque	: 250 %	Temperature rise	: 80 K
Rated speed	: 1780 rpm	Design	: A

Locked rotor time : 28s (cold) 16s (hot)

Rev.	Changes Summary	Performed	Checked	Date
Performed by			Page 2 / 6	Revision
Checked by				
Date	12/04/2022			

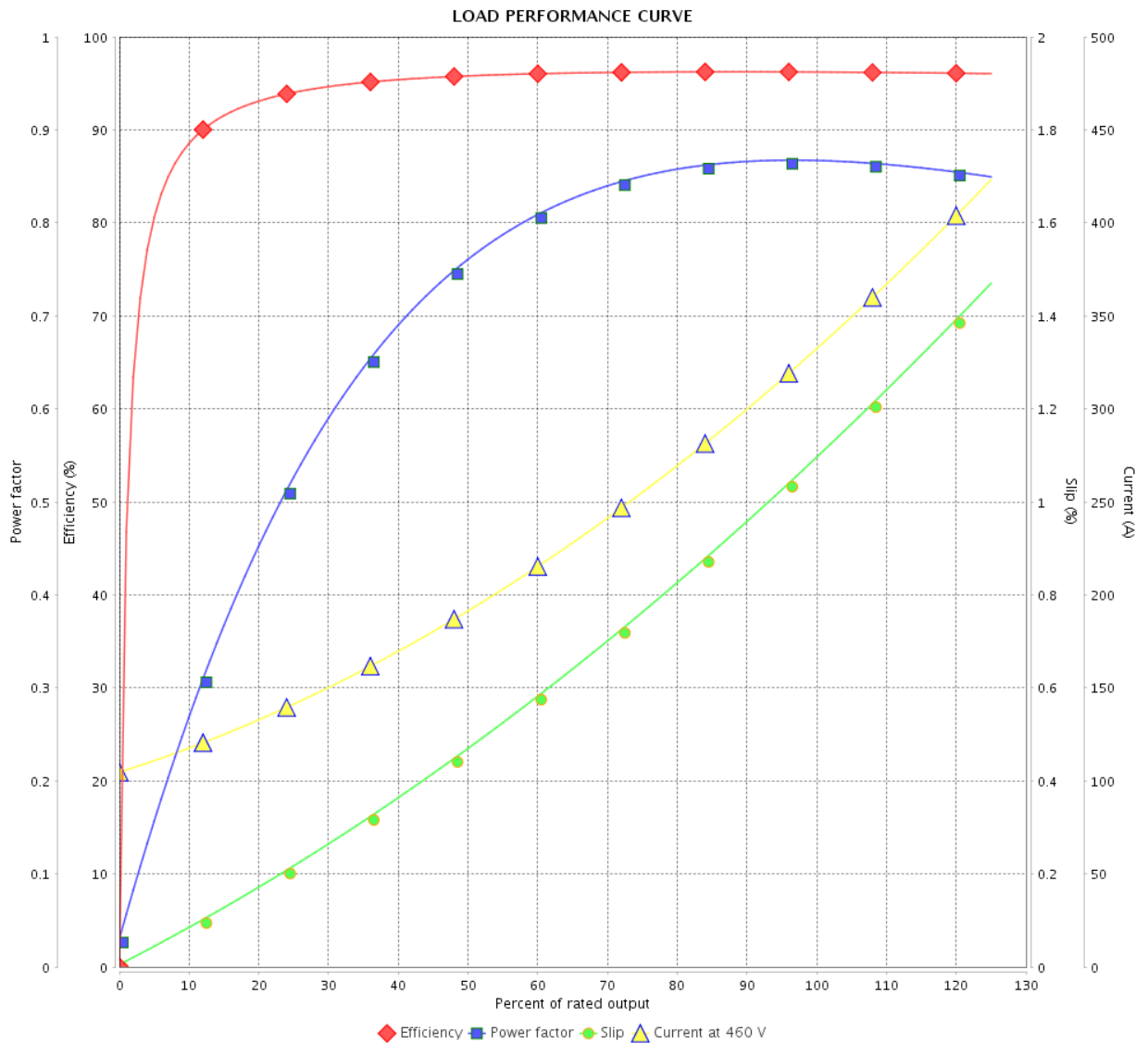
# LOAD PERFORMANCE CURVE

## Three Phase Induction Motor - Squirrel Cage



Customer : \_\_\_\_\_

Product line : NEMA Premium Efficiency Three-Phase      Product code : 13500626  
 Catalog # : 30018ET3GKD449T-W22



Performance : 460 V 60 Hz 4P

Rated current : 330 A  
 LRC : 6.5  
 Rated torque : 885 ft.lb  
 Locked rotor torque : 250 %  
 Breakdown torque : 250 %  
 Rated speed : 1780 rpm

Moment of inertia (J)  
 Duty cycle : Cont.(S1)  
 Insulation class : F  
 Service factor : 1.15  
 Temperature rise : 80 K  
 Design : A

Rev.	Changes Summary	Performed	Checked	Date
Performed by		Page		Revision
Checked by		3 / 6		
Date		12/04/2022		

# THERMAL LIMIT CURVE



## Three Phase Induction Motor - Squirrel Cage

Customer :

Product line : NEMA Premium Efficiency Three-Phase  
Product code : 13500626  
Catalog # : 30018ET3GKD449T-W22

Performance : 460 V 60 Hz 4P

Rated current : 330 A	Moment of inertia (J)
LRC : 6.5	Duty cycle : Cont.(S1)
Rated torque : 885 ft.lb	Insulation class : F
Locked rotor torque : 250 %	Service factor : 1.15
Breakdown torque : 250 %	Temperature rise : 80 K
Rated speed : 1780 rpm	Design : A

Heating constant

Cooling constant

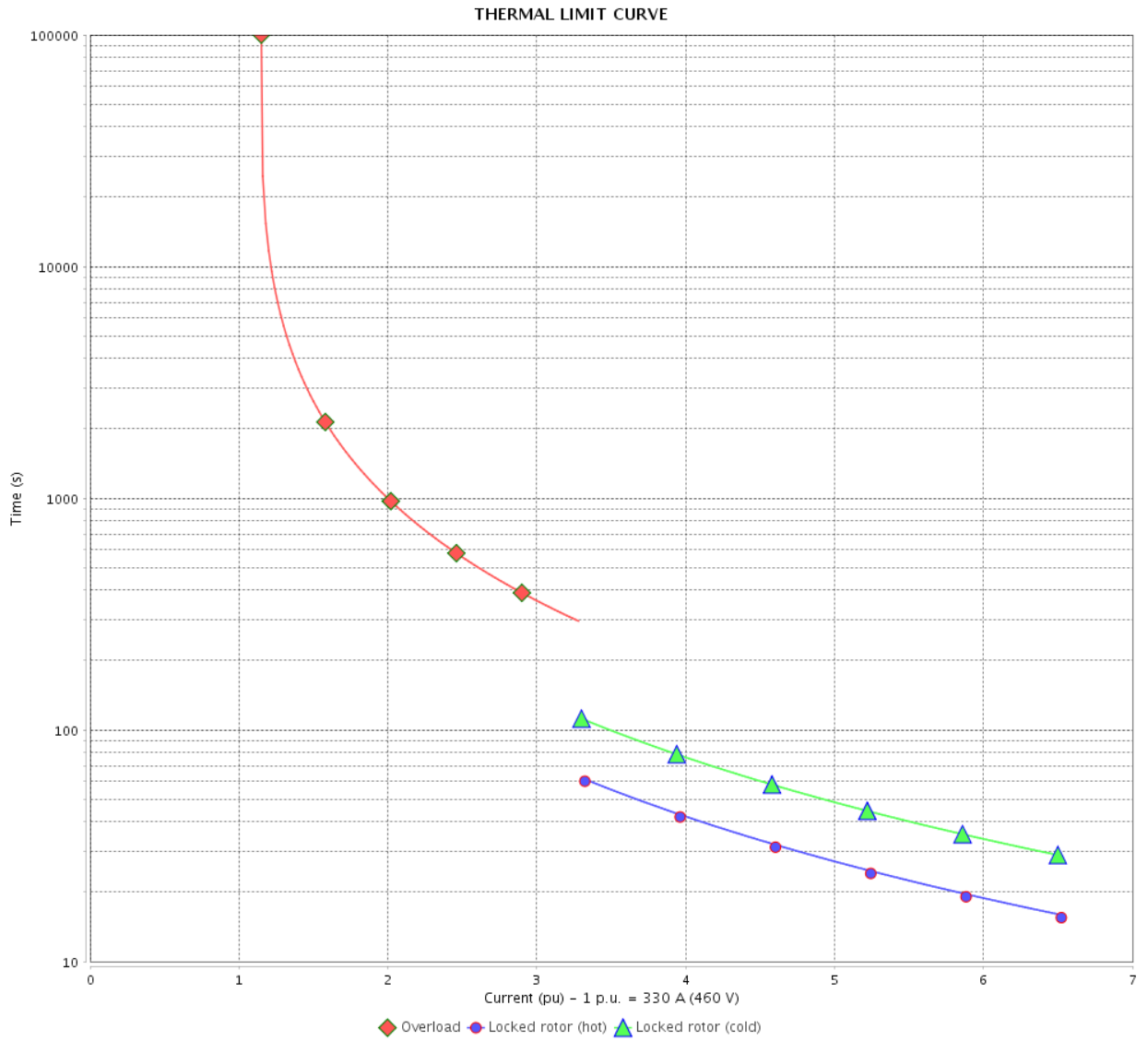
Rev.	Changes Summary	Performed	Checked	Date
Performed by			Page	Revision
Checked by				
Date				
			4 / 6	

# THERMAL LIMIT CURVE

Three Phase Induction Motor - Squirrel Cage



Customer : \_\_\_\_\_



Rev.	Changes Summary	Performed	Checked	Date
Performed by		Page 5 / 6		Revision
Checked by				
Date				

# VFD OPERATION CURVE

Three Phase Induction Motor - Squirrel Cage



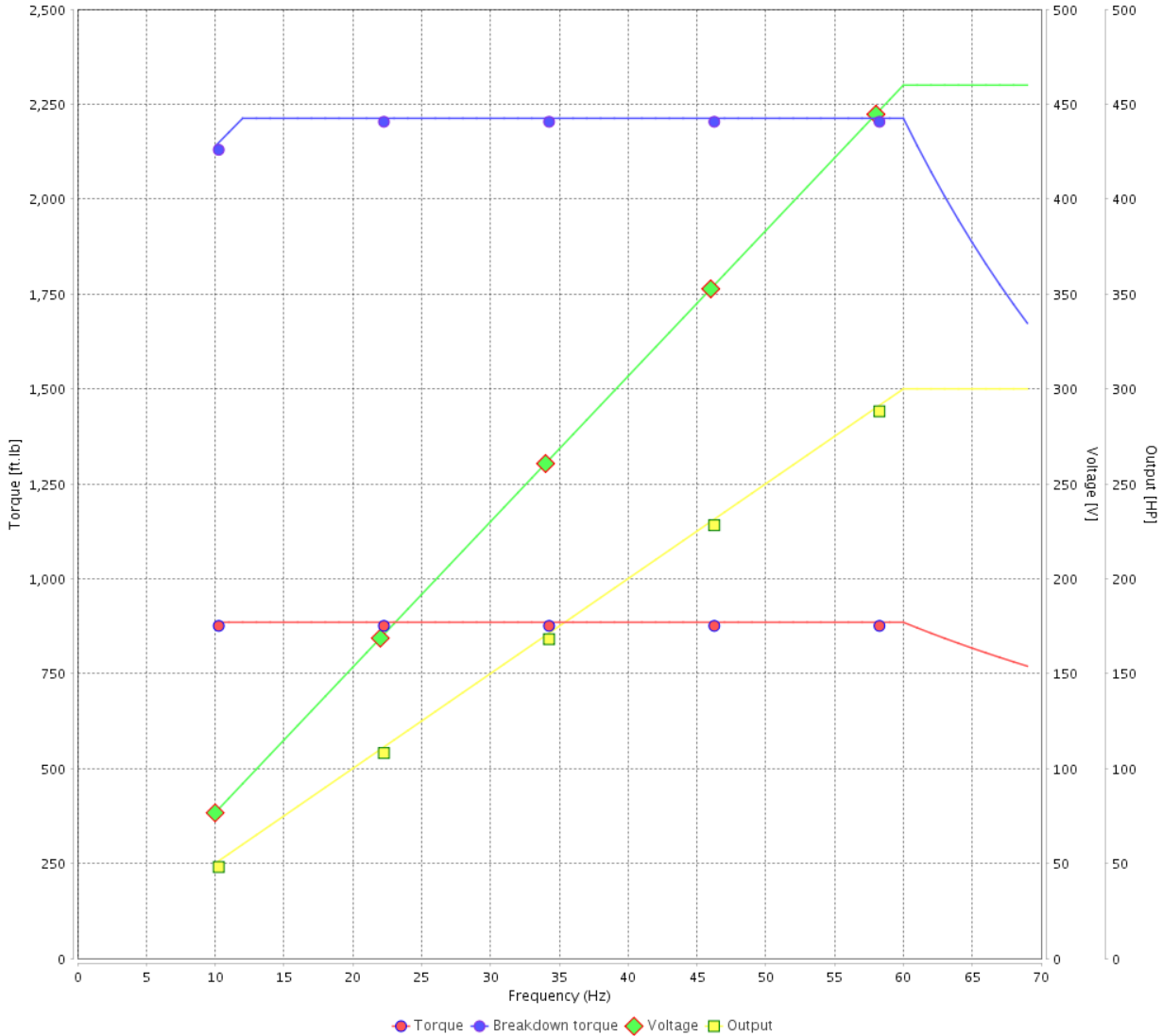
Customer :

Product line : NEMA Premium Efficiency Three-Phase

Product code : 13500626

Catalog # : 30018ET3GKD449T-W22

VFD OPERATION CURVE



Performance : 460 V 60 Hz 4P

Rated current : 330 A  
 LRC : 6.5  
 Rated torque : 885 ft.lb  
 Locked rotor torque : 250 %  
 Breakdown torque : 250 %  
 Rated speed : 1780 rpm

Moment of inertia (J)  
 Duty cycle : Cont.(S1)  
 Insulation class : F  
 Service factor : 1.15  
 Temperature rise : 80 K  
 Design : A

Rev.	Changes Summary	Performed	Checked	Date
Performed by			Page 6 / 6	Revision
Checked by				
Date	12/04/2022			

EIXO/SHAFT	
PADRÃO/STANDARD	X
OPCIONAL/OPTIONAL	
ESPECIAL/SPECIAL	

Dimensões em polegada  
Dimensions in inches

THIS IS AN UPDATED REVISION, THE PREVIOUS ONE MUST BE DISREGARDED.

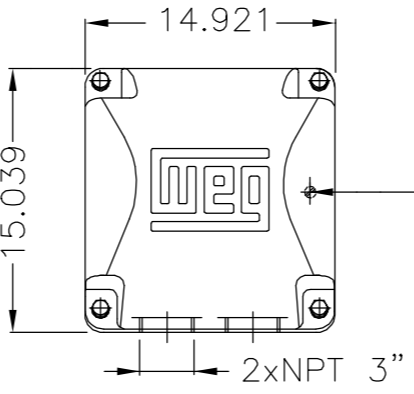
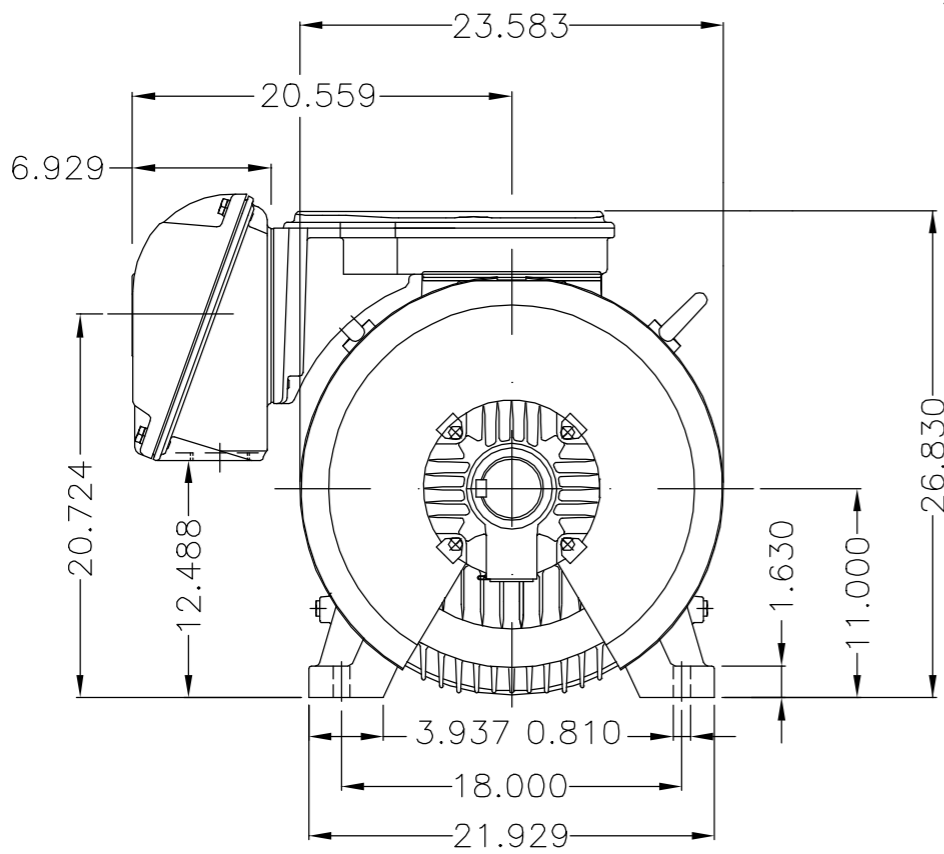
A

B

C

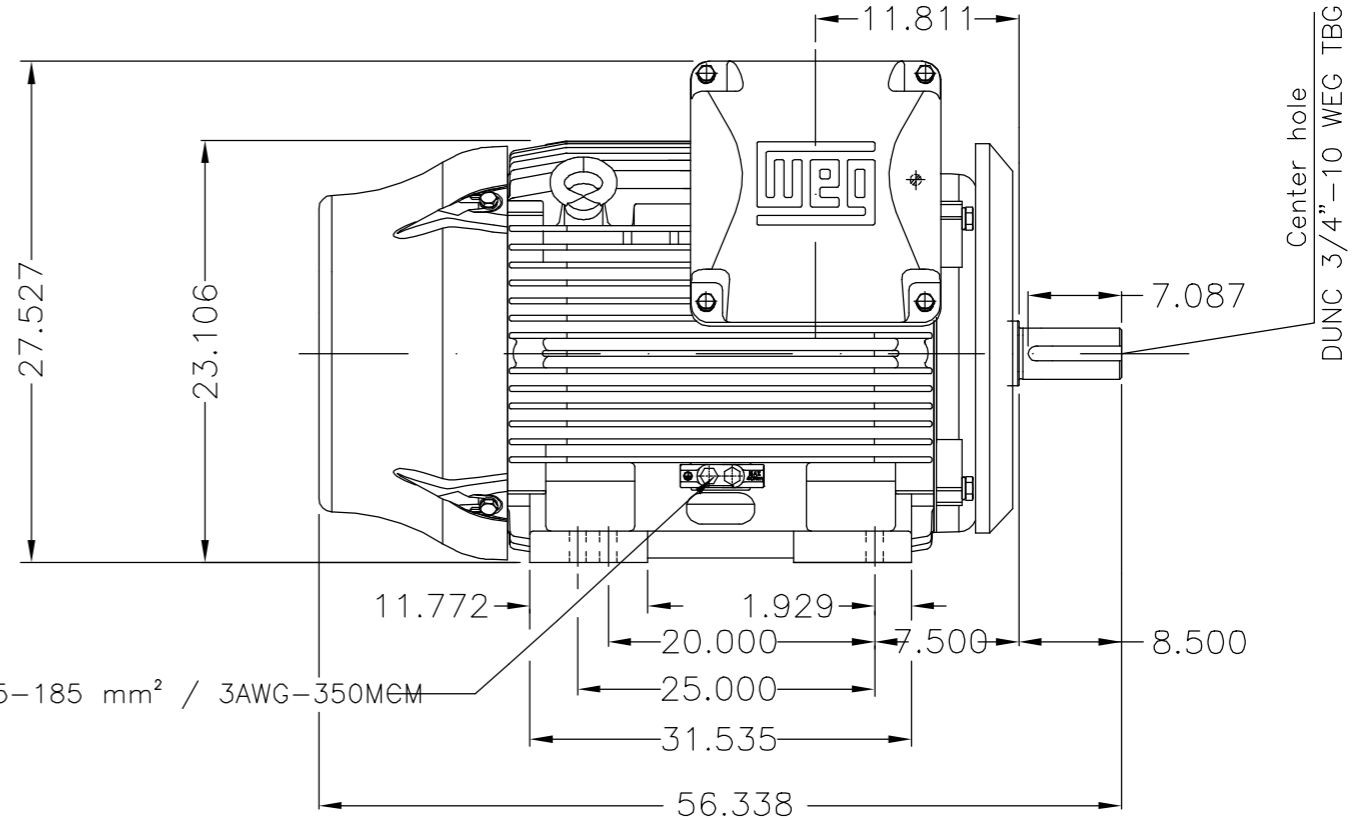
D

E



Main terminal box

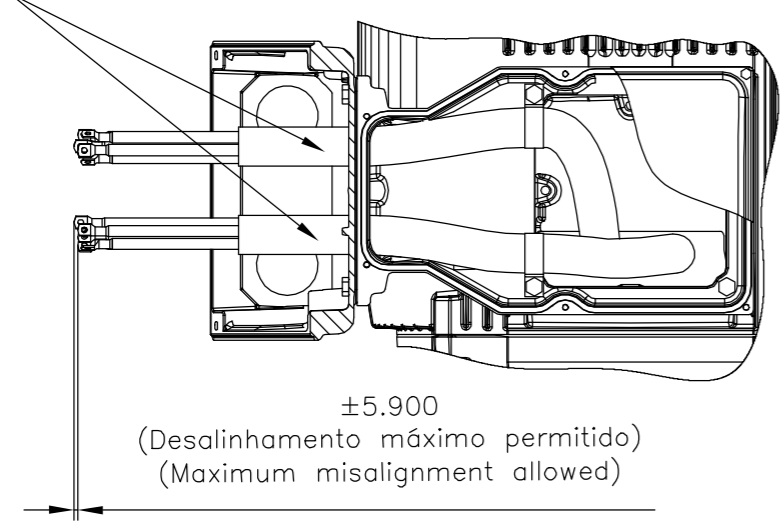
Grounding for leads 35-70 mm<sup>2</sup> / 1-2/0 AWG



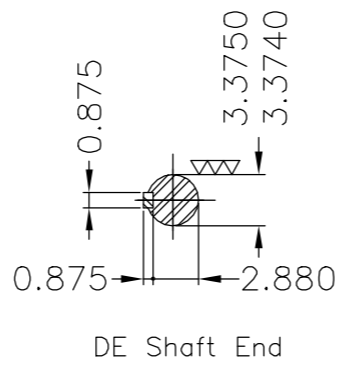
Grounding for leads 25-185 mm<sup>2</sup> / 3AWG-350MEM

Center hole  
DUNC 3/4"-10 WEG TBG12

Fixar o condute no suporte com abraçadeiras.  
Fasten the conduit on support with cables ties.



±5.900  
(Desalinhamento máximo permitido)  
(Maximum misalignment allowed)



DE Shaft End

Linha do motor: Crusher Duty / Motor purpose: Crusher Duty	
Rolamento dianteiro de rolos / DE roller bearing	
Conduite para cabos no interior do suporte da caixa de ligação	
Cables conduit inside terminal box support	
Dispositivo de travamento de eixo / Shaft locking device	
Cor RAL 5009 / Color RAL 5009	
Plano de pintura 203A / Painting plan 203A	
Forma construtiva B3D / Mounting B3R(D)	
<b>WEG EQUIPAMENTOS ELÉTRICOS S/A</b>	

E	500001474636	RET. LINHAS DE POTÊNCIA INCORRETAS	DCARDOSO	SAORIN	SAORIN	09.07.2018	05		
	500001331189	ADIC.NOTA CONDUITE/ADD NOTE CONDUIT	MENSOR	EANJOS	EANJOS	05.07.2017	04		
D	ECM	LOC	SUMMARY OF MODIFICATIONS		EXECUTED	CHECKED	RELEASED	DATE	VER
C	EXECUTED	GABRIELID	THREE PHASE W22 MOTOR FRAME 447/9T IP55 TEFC		10004923929		000   05		
B	CHECKED	JMANENTE							
A	RELEASED	JMANENTE							
A	REL DT	09.05.2017	WMO	Jaragua do Sul	Product Engineering	SHEET	1 / 1		

200 HP	08 Poles	60Hz	414658029
300 HP	06 Poles	60Hz	414658029
250 HP	06 Poles	60Hz	414658029
350 HP	04 Poles	60Hz	414658029
300 HP	04 Poles	60Hz	414658029

MADE IN MEXICO  
13500626



**NEMA**  
Premium  
W22



FOR SAFE AREA  
Mod.TE1BFOXON  
CC029A

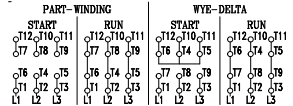


Class I, Div 2, Gr A, B, C and D - T3  
Class I, Zone 2, IIC - T3  
Class II, Div 2, Gr F and G - T3C  
For use on PWM: Gr. A, B, C, D and F,  
VT 1000:1, CT 6:1, 1.00SF - T3

MODEL 30018ET3GKD449T-W22

Inverter Duty Motor  
Severe Duty

PH3	60Hz	Fr. 447/9T	1000m.a.s.l.	IP55	TEFC	2877lb
V 460				A 330		
HP 300				kW 220		
SF 1.15				SFA 379		
RPM 1780				PF 0.87		
AMB 40°C				INS cl. F DT80K	NEMA NOM EFF 96.2%	
DUTY CONT.				DES A Code G		



- NU-322-C3 (60g)
- 6319-C3 (45g)

MOBIL POLYREX EM (4000h)