

DATA SHEET



Three Phase Induction Motor - Squirrel Cage

Customer :				
Product line	: NEMA Premium Efficiency Three-Phase			
Product code :	13500651			
Catalog # :	35009ET3GKD586/7-W22			
Frame : 586/7T Output : 350 HP (260 kW) Poles : 8 Frequency : 60 Hz Rated voltage : 460 V Rated current : 450 A L. R. Amperes : 3555 A LRC : 7.9x(Code K) No load current : 250 A Rated speed : 895 rpm Slip : 0.56 % Rated torque : 2050 ft.lb Locked rotor torque : 200 % Breakdown torque : 229 % Insulation class : F Service factor : 1.00	Locked rotor time : 61s (cold) 34s (hot) Temperature rise : 80 K Duty cycle : Cont.(S1) Ambient temperature : -20°C to +40°C Altitude : 1000 m.a.s.l. Protection degree : IP55 Cooling method : IC411 - TEFC Mounting : F-1 Rotation ¹ : Both (CW and CCW) Noise level ² : 75.0 dB(A) Starting method : Direct On Line Approx. weight ³ : 4926 lb			
Output	25% 50% 75% 100%			
Efficiency (%)	0.000 94.5 95.8 95.8			
Power Factor	0.00 0.58 0.69 0.76			
Foundation loads				
Max. traction	: 7391 lb			
Max. compression	: 12317 lb			
Bearing type	: <u>Drive end</u> NU-322 C3 <u>Non drive end</u> 6319 C3			
Sealing	: Taconite Labyrinth Taconite Labyrinth			
Lubrication interval	: 13000 h 17000 h			
Lubricant amount	: 60 g 45 g			
Lubricant type	: Mobil Polyrex EM			
Notes				
This revision replaces and cancel the previous one, which must be eliminated. (1) Looking the motor from the shaft end. (2) Measured at 1m and with tolerance of +3dB(A). (3) Approximate weight subject to changes after manufacturing process. (4) At 100% of full load.				
These are average values based on tests with sinusoidal power supply, subject to the tolerances stipulated in NEMA MG-1.				
Rev.	Changes Summary	Performed	Checked	Date
Performed by				
Checked by			Page	Revision
Date	13/04/2022		1 / 7	

DATA SHEET

Three Phase Induction Motor - Squirrel Cage



Customer : _____

Space heater information

Voltage: 200 - 240 V

Rev.	Changes Summary	Performed	Checked	Date
Performed by				
Checked by			Page	Revision
Date	13/04/2022		2 / 7	

TORQUE AND CURRENT VS SPEED CURVE



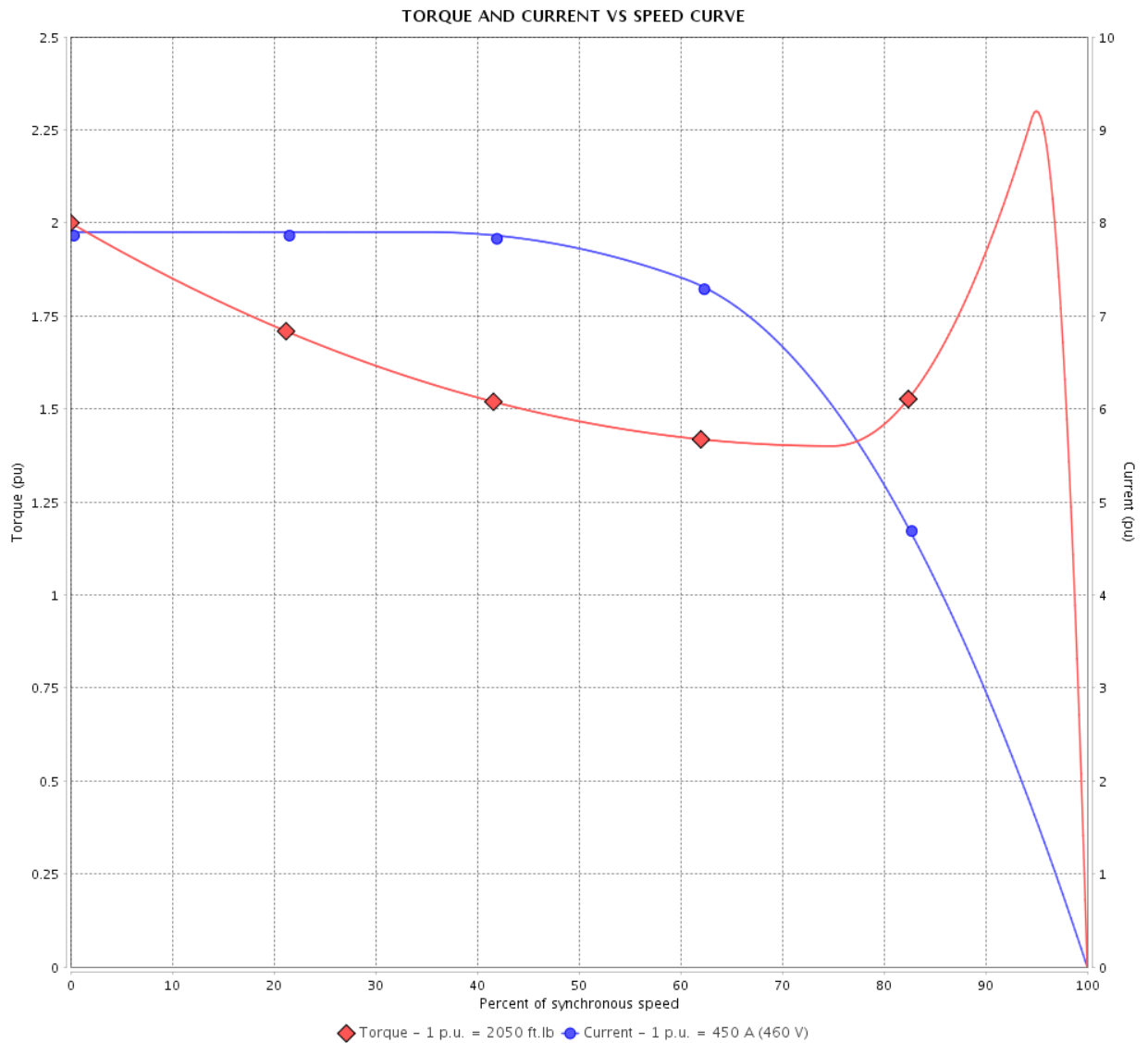
Three Phase Induction Motor - Squirrel Cage

Customer :

Product line : NEMA Premium Efficiency Three-Phase

Product code : 13500651

Catalog # : 35009ET3GKD586/7-W22



Performance : 460 V 60 Hz 8P

Rated current : 450 A
 LRC : 7.9
 Rated torque : 2050 ft.lb
 Locked rotor torque : 200 %
 Breakdown torque : 229 %
 Rated speed : 895 rpm

Moment of inertia (J)
 Duty cycle : Cont.(S1)
 Insulation class : F
 Service factor : 1.00
 Temperature rise : 80 K

Locked rotor time : 61s (cold) 34s (hot)

Rev.	Changes Summary	Performed	Checked	Date
Performed by		Page		Revision
Checked by		3 / 7		
Date	13/04/2022			

LOAD PERFORMANCE CURVE

Three Phase Induction Motor - Squirrel Cage



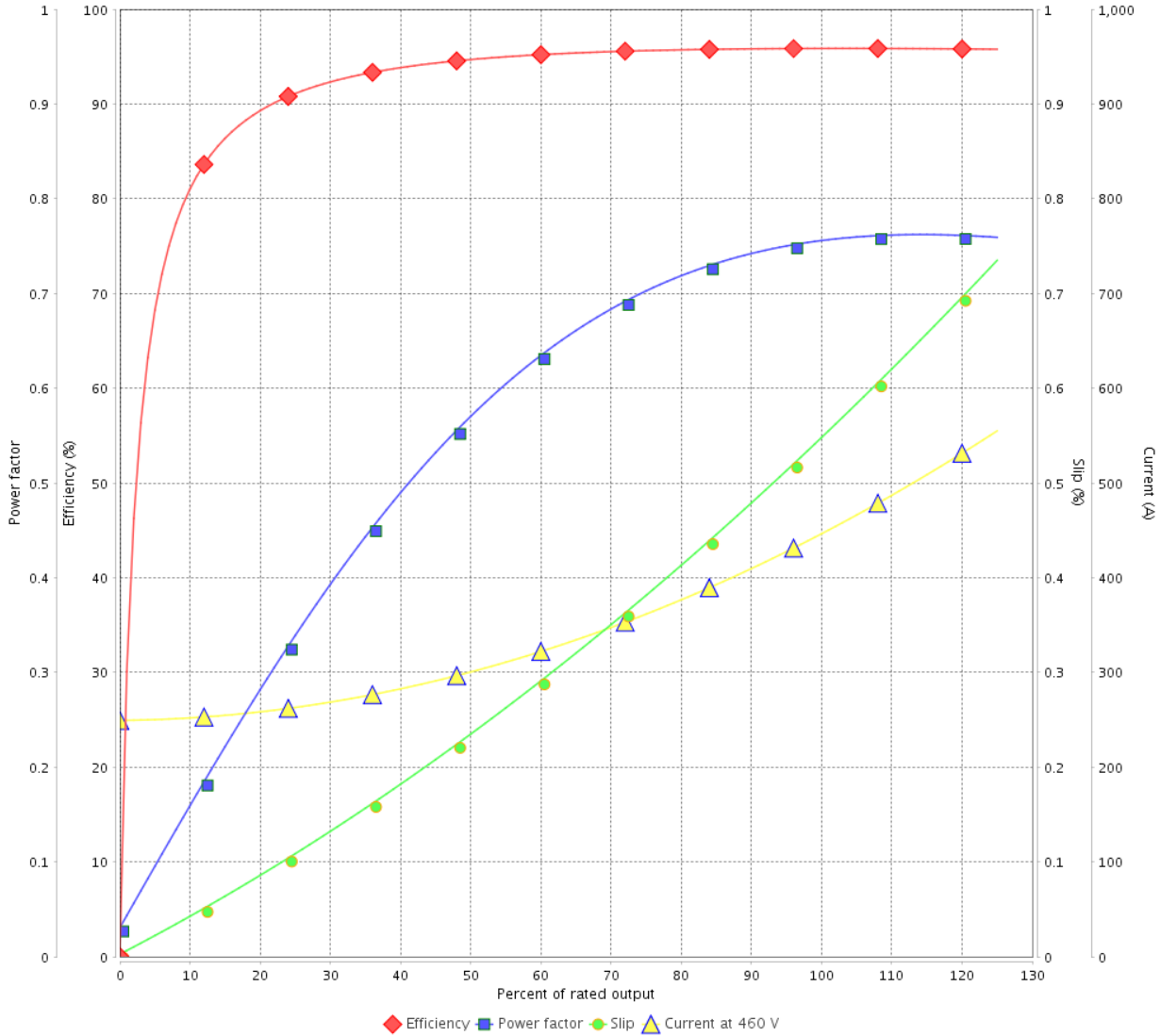
Customer :

Product line : NEMA Premium Efficiency Three-Phase

Product code : 13500651

Catalog # : 35009ET3GKD586/7-W22

LOAD PERFORMANCE CURVE



Performance : 460 V 60 Hz 8P

Rated current : 450 A
 LRC : 7.9
 Rated torque : 2050 ft.lb
 Locked rotor torque : 200 %
 Breakdown torque : 229 %
 Rated speed : 895 rpm

Moment of inertia (J)
 Duty cycle : Cont.(S1)
 Insulation class : F
 Service factor : 1.00
 Temperature rise : 80 K

Rev.	Changes Summary	Performed	Checked	Date
Performed by			Page	Revision
Checked by				
Date				

THERMAL LIMIT CURVE

Three Phase Induction Motor - Squirrel Cage



Customer :

Product line : NEMA Premium Efficiency Three-Phase
Product code : 13500651
Catalog # : 35009ET3GKD586/7-W22

Performance : 460 V 60 Hz 8P

Rated current : 450 A	Moment of inertia (J)
LRC : 7.9	Duty cycle : Cont.(S1)
Rated torque : 2050 ft.lb	Insulation class : F
Locked rotor torque : 200 %	Service factor : 1.00
Breakdown torque : 229 %	Temperature rise : 80 K
Rated speed : 895 rpm	

Heating constant

Cooling constant

Rev.	Changes Summary	Performed	Checked	Date
Performed by				
Checked by			Page	Revision
Date	13/04/2022		5 / 7	

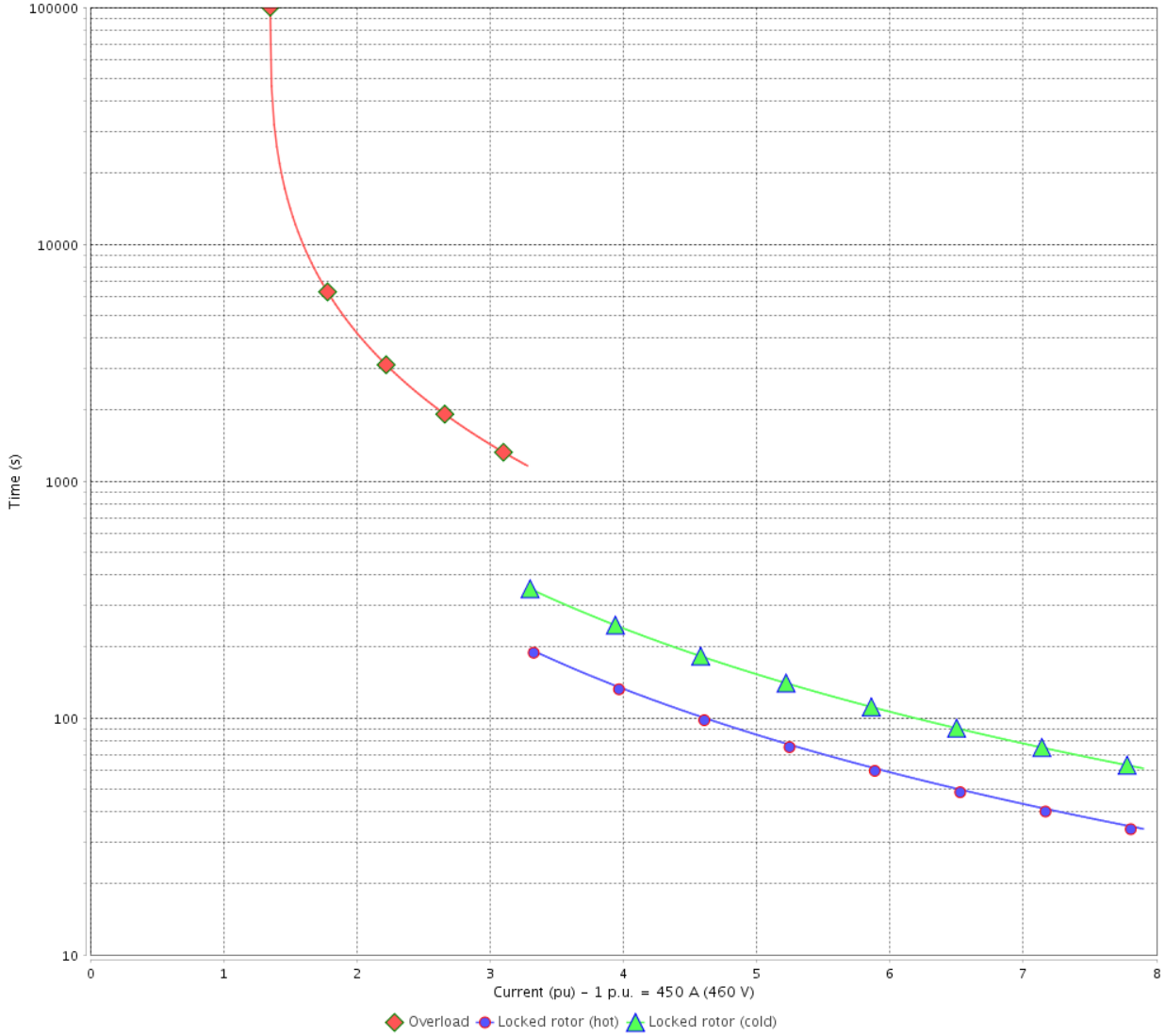
THERMAL LIMIT CURVE

Three Phase Induction Motor - Squirrel Cage



Customer : _____

THERMAL LIMIT CURVE



Rev.	Changes Summary	Performed	Checked	Date
Performed by			Page 6 / 7	Revision
Checked by				
Date	13/04/2022			

VFD OPERATION CURVE

Three Phase Induction Motor - Squirrel Cage

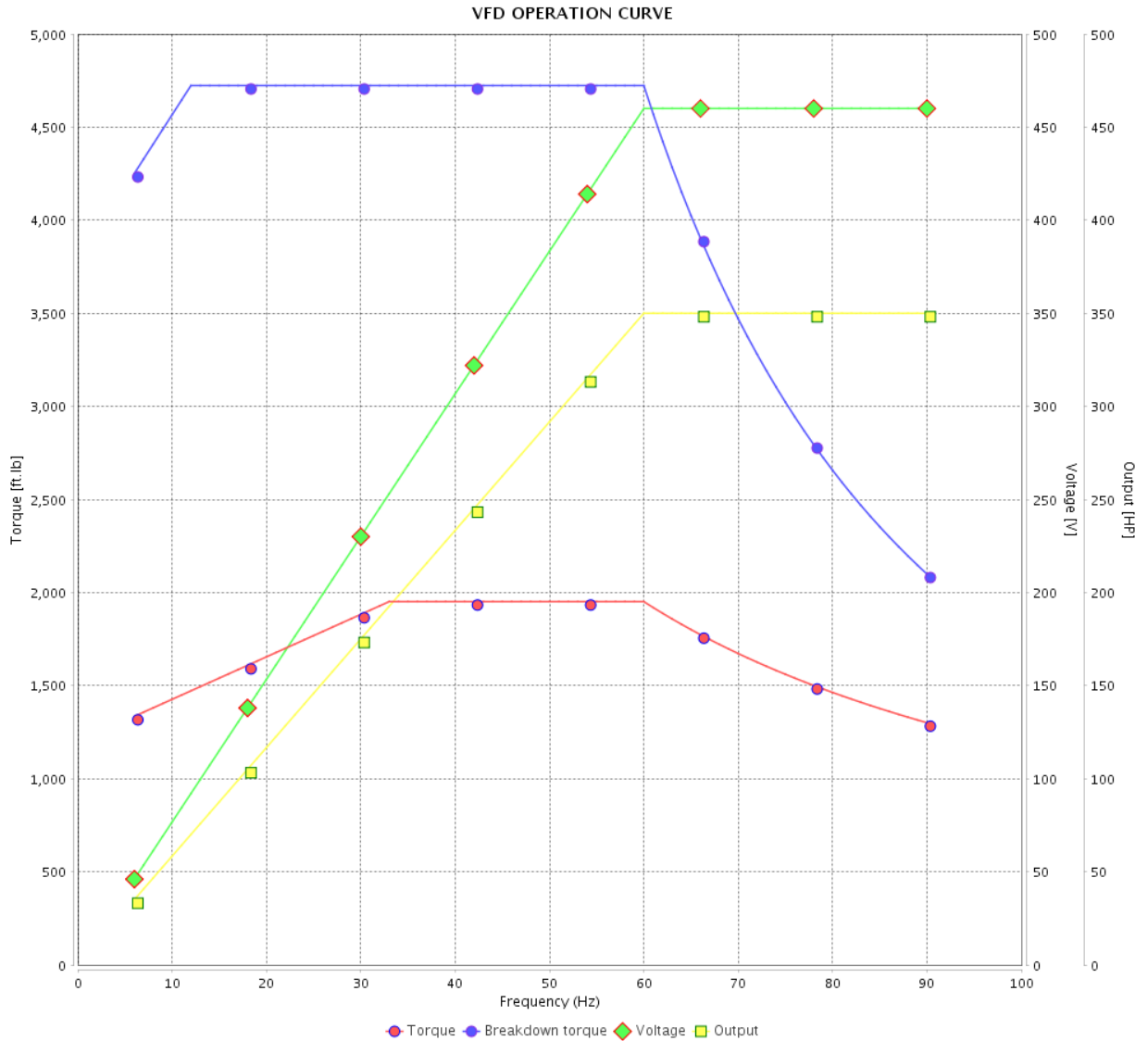


Customer : _____

Product line : NEMA Premium Efficiency Three-Phase

Product code : 13500651

Catalog # : 35009ET3GKD586/7-W22



Performance : 460 V 60 Hz 8P

Rated current : 450 A
 LRC : 7.9
 Rated torque : 2050 ft.lb
 Locked rotor torque : 200 %
 Breakdown torque : 229 %
 Rated speed : 895 rpm

Moment of inertia (J)
 Duty cycle : Cont.(S1)
 Insulation class : F
 Service factor : 1.00
 Temperature rise : 80 K

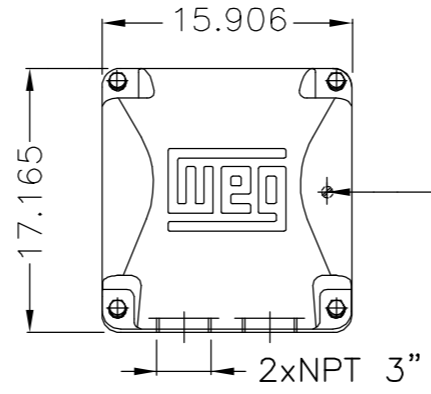
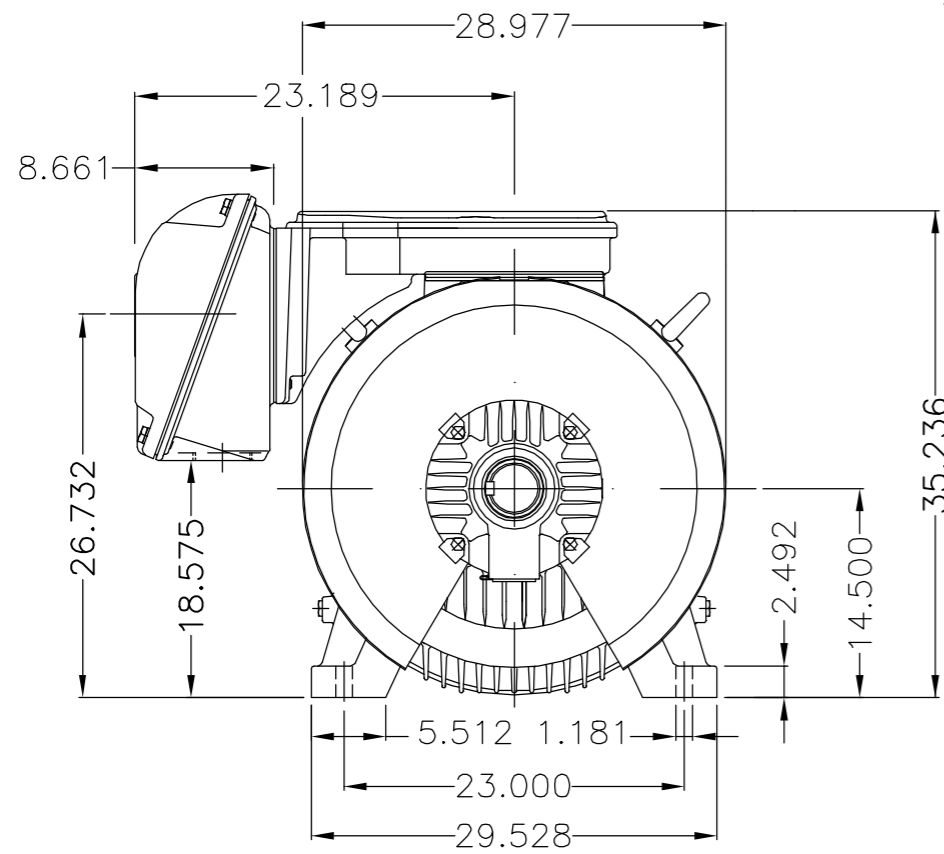
Rev.	Changes Summary	Performed	Checked	Date
Performed by		Page		Revision
Checked by		7 / 7		
Date		13/04/2022		

EIXO/SHAFT	
PADRÃO/STANDARD	X
OPCIONAL/OPTIONAL	
ESPECIAL/SPECIAL	

Dimensões em polegada
Dimensions in inches

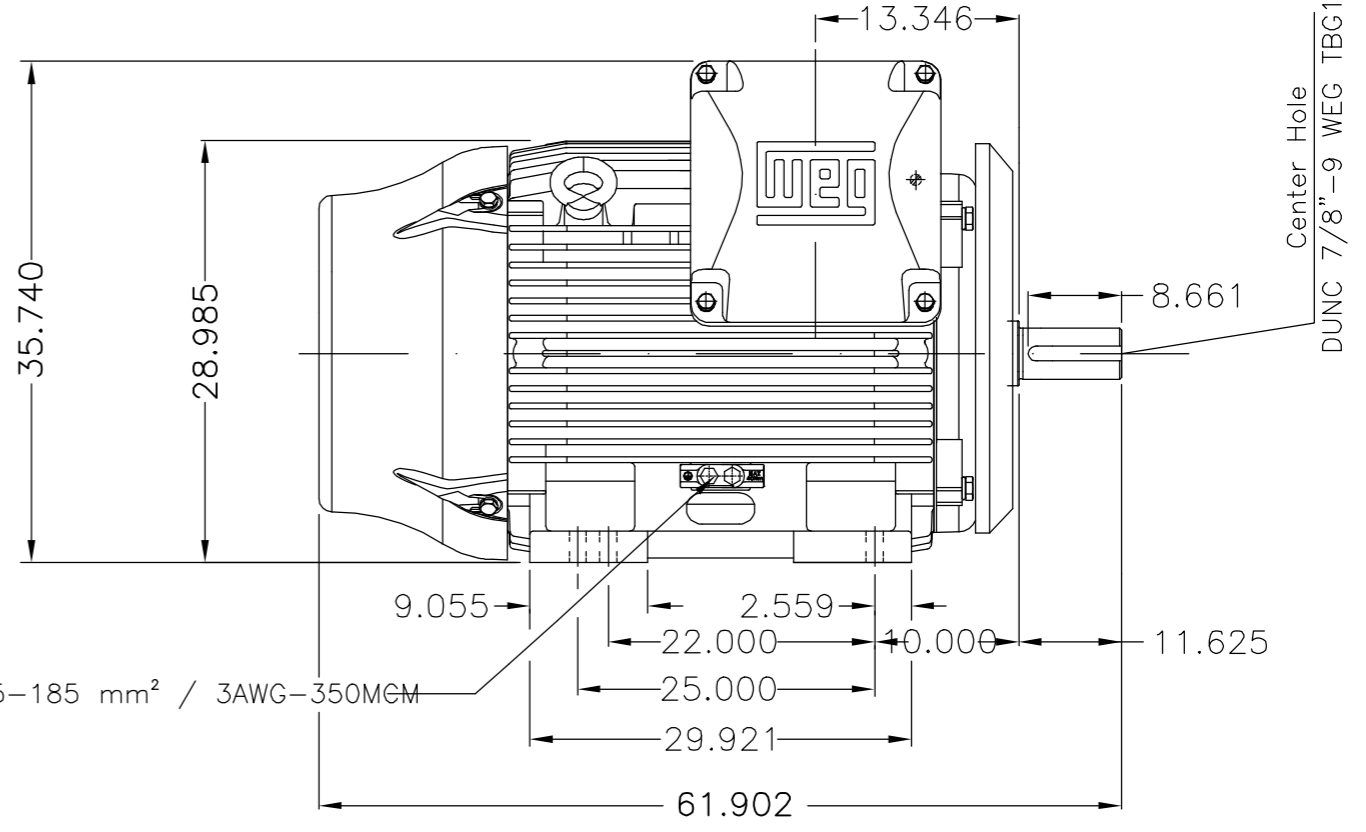
THIS IS AN UPDATED REVISION, THE PREVIOUS ONE MUST BE DISREGARDED.

A
B
C
D
E



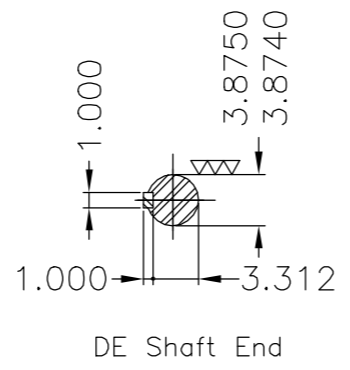
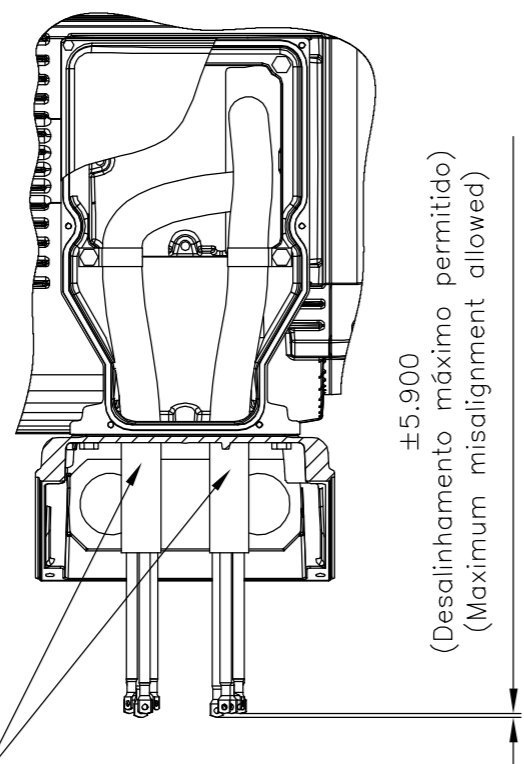
Main terminal box

Grounding for leads 35-120 mm² / 1-4/0 AWG



Grounding for leads 25-185 mm² / 3AWG-350MCM

Fixar o conduíte no suporte com abraçadeiras.
Fasten the conduit on support with cables ties.



DE Shaft End

Conduite para cabos no interior do suporte da caixa de ligação						
Cables conduit inside terminal box support						
Linha do motor: Crusher Duty / Motor purpose: Crusher Duty						
Rolamento dianteiro de rolos / DE roller bearing						
Dispositivo de travamento de eixo / Shaft locking device						
Tampa traseira com mancal eletricamente isolado						
NDE endshield with electrically insulated bearing hub						
Defletor de ar dianteiro / Drive-End Air Deflector						
Cor RAL 5009 / Color RAL 5009						
Plano de pintura 203A / Painting plan 203A						
Forma construtiva NEMA F-1 / Mounting NEMA F-1						
Forma construtiva B3D / Mounting B3R(D)						
WEG EQUIPAMENTOS ELÉTRICOS S/A						

500001331189		ADIC.NOTA CONDUITE/ADD NOTE CONDUIT	MENSOR		EANJOS	05.07.2017	04
500001323616		ALTERADO CONFORME CDP 414658625	MENSOR		JMANENTE	20.06.2017	03
ECM	LOC	SUMMARY OF MODIFICATIONS	EXECUTED	CHECKED	RELEASED	DATE	VER
EXECUTED	GABRIELID	THREE PHASE W22 MOTOR FRAME 586/7T IP55 TEFC			10004924323		
CHECKED							
RELEASED	JMANENTE						
REL DT	09.05.2017	WMO	Jaragua do Sul	Product Engineering	SHEET	1 / 1	

350 HP 08 Poles 60Hz 414658029

A



UNCONTROLLED COPY

RELEASED

ZME A3

MODEL 35009ET3GKD586/7-W22
MADE IN BRAZIL
13500651



*Inverter Duty Motor
Severe Duty*

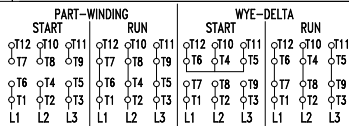



FOR SAFE AREA
MOD.TE1BFOXON



Class I, Div 2, Gr. A, B, C and D - T3
Class I, Zone 2, IIC - T3
Class II, Div 2, Gr. F and G - T4
For use on PWM, Gr. A, B, C and D,
VT 1000:1, CT 6:1, 1.0SF, T2B

PH 3	FR 586/7T	HP(kW) 350(260)	Hz 60
V 460	A 450		IP55
NEMA NOM EFF	95.8 %	RPM 895	
ENCL TEFC	DUTY CONT.	INS. CL. F ΔT 80 K	
PF 0.76	DES -	CODE K	AMB. 40°C
SF 1.00		ALT 1000 m.a.s.l.	



 → NU-322-C3(60g) MOBIL POLYREX EM
→ 6319-C3(45g) 13000 h

4925 Lbs