

# DATA SHEET



## Three Phase Induction Motor - Squirrel Cage

Customer :				
Product line	: NEMA Premium Efficiency Three-Phase			
Product code :	13500653			
Catalog # :	35012ET3GKD586/7-W22			
Frame : 586/7T Output : 350 HP (260 kW) Poles : 6 Frequency : 60 Hz Rated voltage : 460 V Rated current : 425 A L. R. Amperes : 2593 A LRC : 6.1x(Code G) No load current : 190 A Rated speed : 1193 rpm Slip : 0.58 % Rated torque : 1540 ft.lb Locked rotor torque : 220 % Breakdown torque : 250 % Insulation class : F Service factor : 1.15 Design : A	Locked rotor time : 52s (cold) 29s (hot) Temperature rise : 80 K Duty cycle : Cont.(S1) Ambient temperature : -20°C to +40°C Altitude : 1000 m.a.s.l. Protection degree : IP55 Cooling method : IC411 - TEFC Mounting : F-1 Rotation <sup>1</sup> : Both (CW and CCW) Noise level <sup>2</sup> : 77.0 dB(A) Starting method : Direct On Line Approx. weight <sup>3</sup> : 3784 lb			
Output	25% 50% 75% 100%			
Efficiency (%)	0.000 95.4 95.8 95.8			
Power Factor	0.00 0.66 0.75 0.80			
Foundation loads				
Max. traction	: 6144 lb			
Max. compression	: 9928 lb			
Bearing type	: <u>Drive end</u> NU-322 C3 <u>Non drive end</u> 6319 C3			
Sealing	: Taconite Labyrinth Taconite Labyrinth			
Lubrication interval	: 7000 h 13000 h			
Lubricant amount	: 60 g 45 g			
Lubricant type	: Mobil Polyrex EM			
Notes				
This revision replaces and cancel the previous one, which must be eliminated. (1) Looking the motor from the shaft end. (2) Measured at 1m and with tolerance of +3dB(A). (3) Approximate weight subject to changes after manufacturing process. (4) At 100% of full load.				
These are average values based on tests with sinusoidal power supply, subject to the tolerances stipulated in NEMA MG-1.				
Rev.	Changes Summary	Performed	Checked	Date
Performed by				
Checked by			Page	Revision
Date	13/04/2022		1 / 7	

# DATA SHEET

## Three Phase Induction Motor - Squirrel Cage



Customer : \_\_\_\_\_

### Space heater information

Voltage: 200 - 240 V

Rev.	Changes Summary	Performed	Checked	Date
Performed by				
Checked by			Page	Revision
Date	13/04/2022		2 / 7	

# TORQUE AND CURRENT VS SPEED CURVE



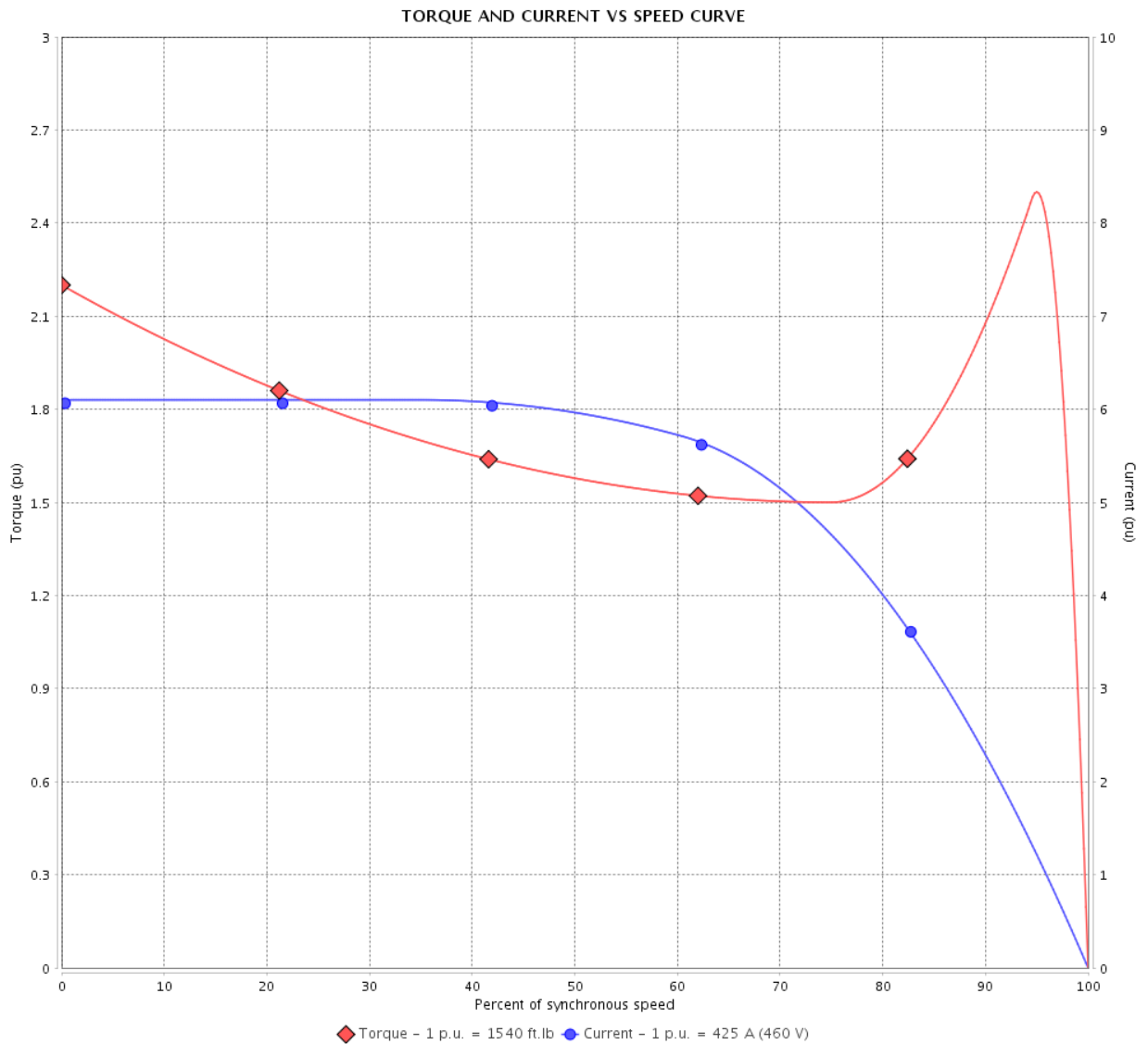
## Three Phase Induction Motor - Squirrel Cage

Customer :

Product line : NEMA Premium Efficiency Three-Phase

Product code : 13500653

Catalog # : 35012ET3GKD586/7-W22



Performance : 460 V 60 Hz 6P

Rated current : 425 A  
 LRC : 6.1  
 Rated torque : 1540 ft.lb  
 Locked rotor torque : 220 %  
 Breakdown torque : 250 %  
 Rated speed : 1193 rpm

Moment of inertia (J)  
 Duty cycle : Cont.(S1)  
 Insulation class : F  
 Service factor : 1.15  
 Temperature rise : 80 K  
 Design : A

Locked rotor time : 52s (cold) 29s (hot)

Rev.	Changes Summary	Performed	Checked	Date
Performed by			Page 3 / 7	Revision
Checked by				
Date	13/04/2022			

# LOAD PERFORMANCE CURVE

Three Phase Induction Motor - Squirrel Cage

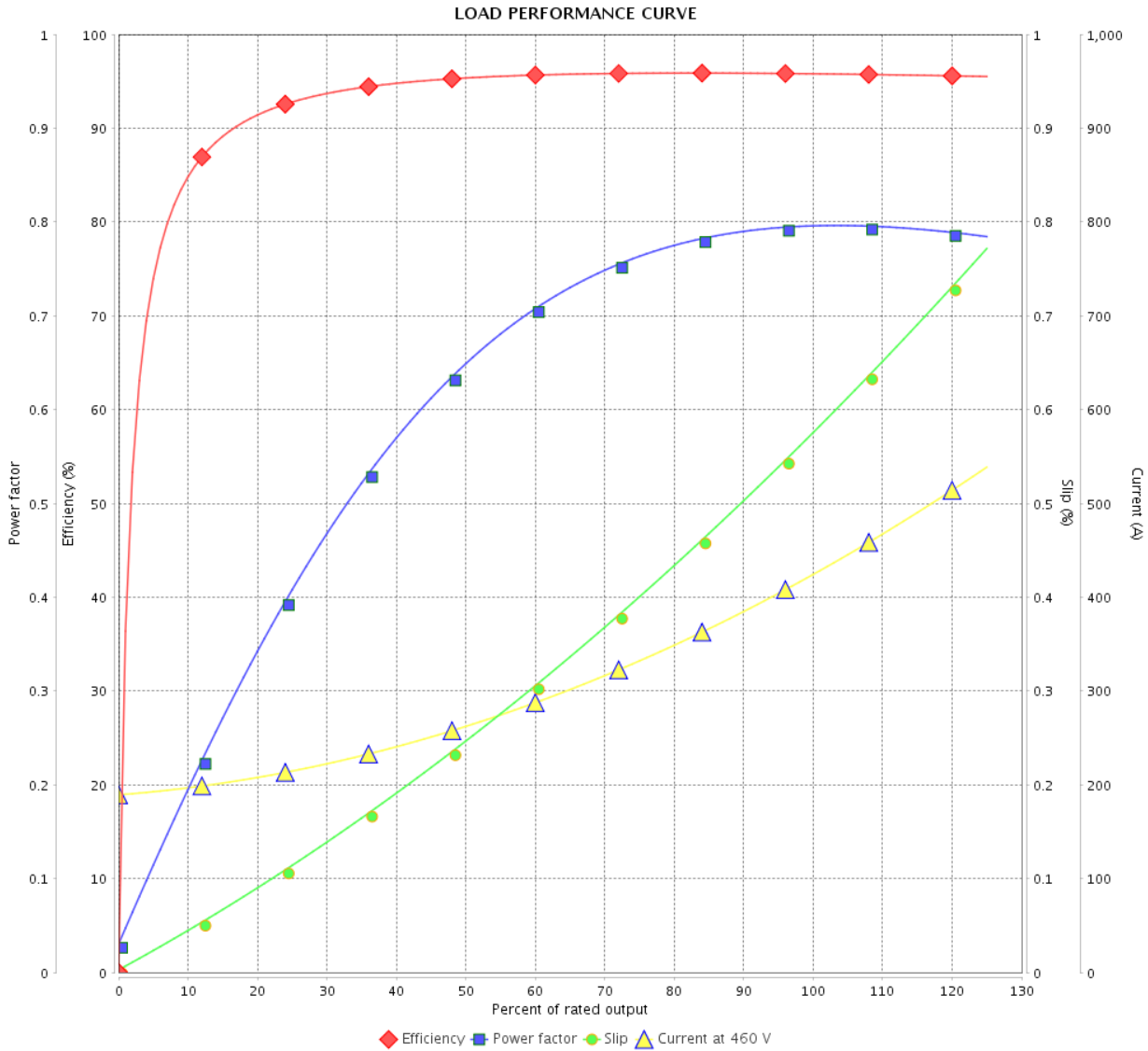


Customer :

Product line : NEMA Premium Efficiency Three-Phase

Product code : 13500653

Catalog # : 35012ET3GKD586/7-W22



Performance : 460 V 60 Hz 6P

Rated current : 425 A	Moment of inertia (J)
LRC : 6.1	Duty cycle : Cont.(S1)
Rated torque : 1540 ft.lb	Insulation class : F
Locked rotor torque : 220 %	Service factor : 1.15
Breakdown torque : 250 %	Temperature rise : 80 K
Rated speed : 1193 rpm	Design : A

Rev.	Changes Summary	Performed	Checked	Date
Performed by			Page 4 / 7	Revision
Checked by				
Date	13/04/2022			

# THERMAL LIMIT CURVE



## Three Phase Induction Motor - Squirrel Cage

Customer :

Product line : NEMA Premium Efficiency Three-Phase  
 Product code : 13500653  
 Catalog # : 35012ET3GKD586/7-W22

Performance : 460 V 60 Hz 6P

Rated current : 425 A	Moment of inertia (J)
LRC : 6.1	Duty cycle : Cont.(S1)
Rated torque : 1540 ft.lb	Insulation class : F
Locked rotor torque : 220 %	Service factor : 1.15
Breakdown torque : 250 %	Temperature rise : 80 K
Rated speed : 1193 rpm	Design : A

Heating constant

Cooling constant

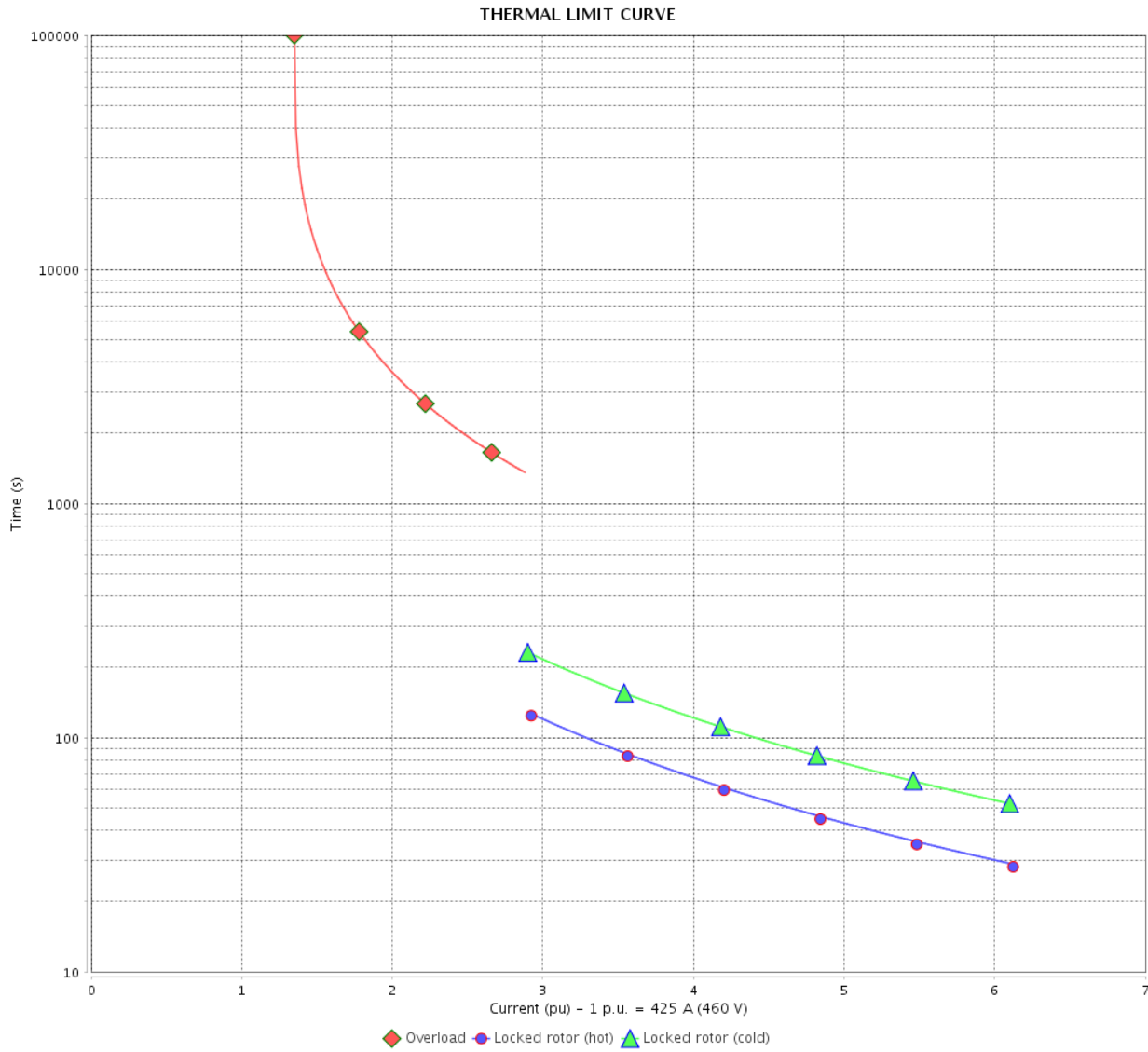
Rev.	Changes Summary	Performed	Checked	Date
Performed by			Page 5 / 7	Revision
Checked by				
Date	13/04/2022			

# THERMAL LIMIT CURVE

Three Phase Induction Motor - Squirrel Cage



Customer : \_\_\_\_\_



Rev.	Changes Summary	Performed	Checked	Date
Performed by		Page 6 / 7		Revision
Checked by				
Date				

# VFD OPERATION CURVE

## Three Phase Induction Motor - Squirrel Cage

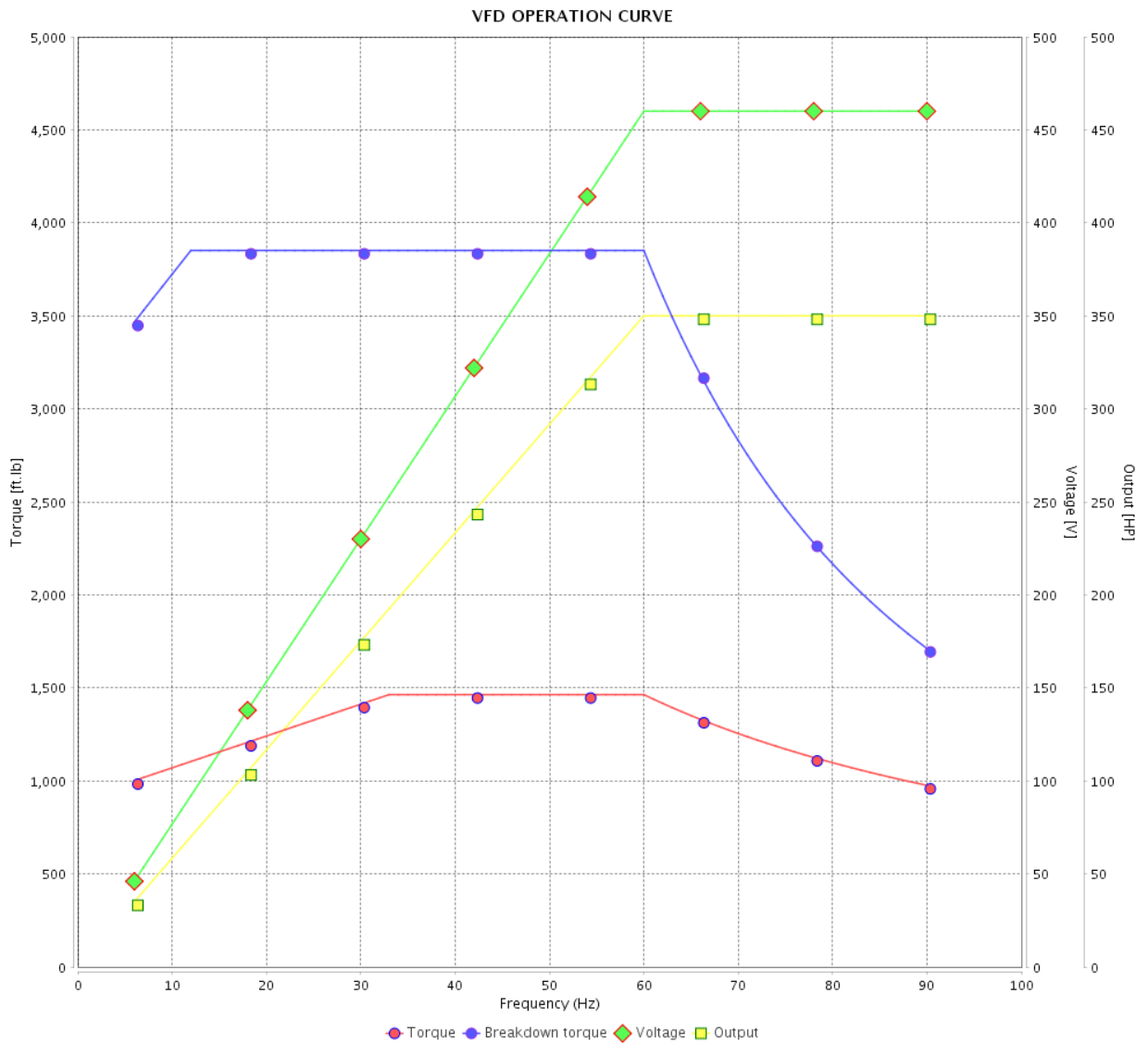


Customer :

Product line : NEMA Premium Efficiency Three-Phase

Product code : 13500653

Catalog # : 35012ET3GKD586/7-W22



Performance : 460 V 60 Hz 6P

Rated current : 425 A  
 LRC : 6.1  
 Rated torque : 1540 ft.lb  
 Locked rotor torque : 220 %  
 Breakdown torque : 250 %  
 Rated speed : 1193 rpm

Moment of inertia (J)  
 Duty cycle : Cont.(S1)  
 Insulation class : F  
 Service factor : 1.15  
 Temperature rise : 80 K  
 Design : A

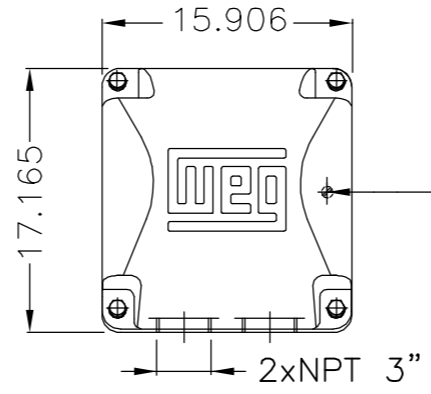
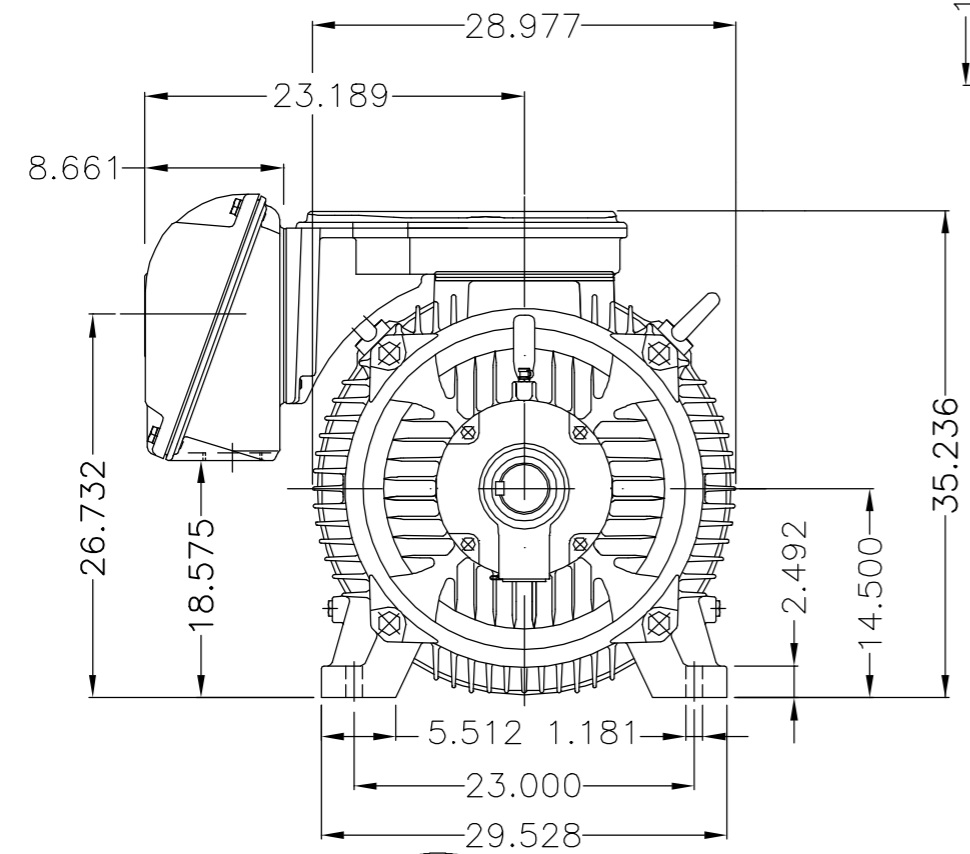
Rev.	Changes Summary	Performed	Checked	Date
Performed by			Page 7 / 7	Revision
Checked by				
Date	13/04/2022			

EIXO/SHAFT	
PADRÃO/STANDARD	X
OPCIONAL/OPTIONAL	
ESPECIAL/SPECIAL	

Dimensões em polegada  
Dimensions in inches

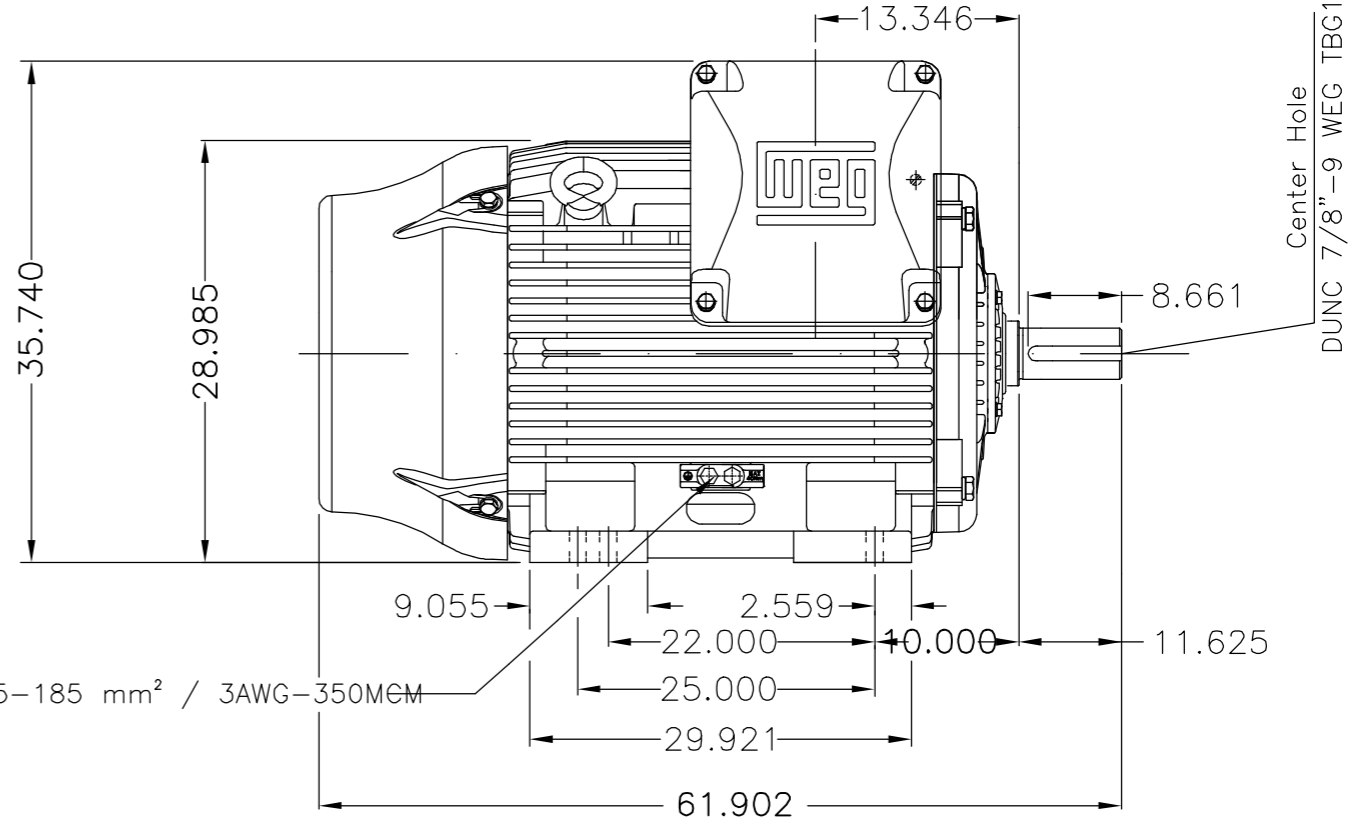
THIS IS AN UPDATED REVISION, THE PREVIOUS ONE MUST BE DISREGARDED.

A  
B  
C  
D  
E



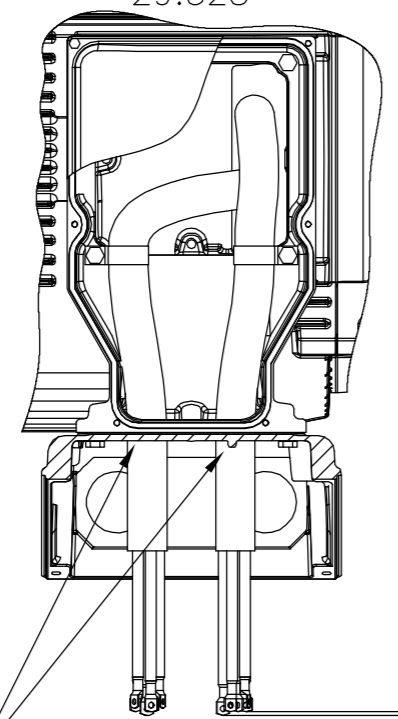
Main terminal box

Grounding for leads 35-120 mm<sup>2</sup> / 1-4/0 AWG

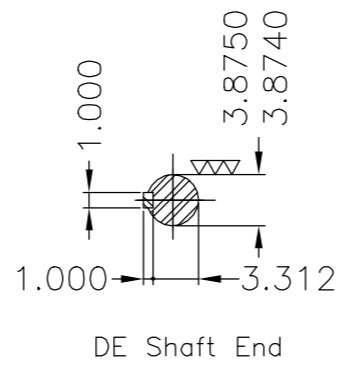


Grounding for leads 25-185 mm<sup>2</sup> / 3AWG-350MEM

Fixar o conduto no suporte com abraçadeiras.  
Fasten the conduit on support with cables ties.



±5.900  
(Desalinhamento máximo permitido)  
(Maximum misalignment allowed)



DE Shaft End

Conduite para cabos no interior do suporte da caixa de ligação									
Cables conduit inside terminal box support									
Rolamento dianteiro de rolos / DE roller bearing									
Dispositivo de travamento de eixo / Shaft locking device									
Linha do motor: Crusher Duty / Motor purpose: Crusher Duty									
Tampa traseira com mancal eletricamente isolado									
NDE endshield with electrically insulated bearing hub									
Cor RAL 5009 / Color RAL 5009									
Plano de pintura 203A / Painting plan 203A									
Forma construtiva B3D / Mounting B3R(D)									
<b>WEG EQUIPAMENTOS ELÉTRICOS S/A</b>									

E	300 HP	08 Poles	60Hz	414658029
	250 HP	08 Poles	60Hz	414668751
	400 HP	06 Poles	60Hz	414658029
	350 HP	06 Poles	60Hz	414658029
	300 HP	06 Poles	60Hz	414658029

E	500001331189	ADIC.NOTA CONDUITE/ADD NOTE CONDUIT	MENSOR	EANJOS	05.07.2017	04
D	500001323616	ALTERADO CONFORME CDP 414658625	MENSOR	JMANENTE	20.06.2017	03
C	EXECUTED	GABRIELID	SUMMARY OF MODIFICATIONS			
B	CHECKED		THREE PHASE W22 MOTOR			
A	RELEASED	JMANENTE	FRAME 586/7T IP55 TEFC			
A	REL DT	09.05.2017	WMO	Jaragua do Sul	Product Engineering	10004924169
				000	04	1 / 1



UNCONTROLLED COPY

RELEASED

ZME A3





FOR SAFE AREA  
Mod.TE1BFOXON  
CC029A



Class I, Div 2, Gr A, B, C and D - T3  
Class I, Zone 2, IIC - T3  
Class II, Div 2, Gr F and G - T3C  
For use on PWM: Gr. A, B, C and D,  
VT 1000:1, CT 6:1, 1.00SF - T2B

MODEL 35012ET3GKD586/7-W22

Inverter Duty Motor  
Severe Duty

PH3 60Hz Fr. 586/7T 1000m.a.s.l. IP55 TEFC 4068lb

V 460

A 425

HP 350

kW 260

SF 1.15

SFA 489

RPM 1193

PF 0.80

AMB 40°C

INS cl. F DT80K

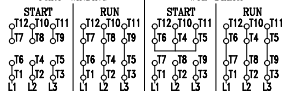
NEMA NOM EFF 95.8%

DUTY CONT.

DES A Code G

PART-WINDING

WYE-DELTA

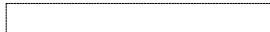


→ NU-322-C3 (60g)

→ 6319-C3 (45g)



MOBIL POLYREX EM (7000h)



MADE IN BRAZIL  
13500653