

DATA SHEET

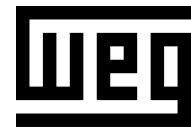


Three Phase Induction Motor - Squirrel Cage

Customer :				
Product line	: NEMA Premium Efficiency Three-Phase			
Product code :	13500655			
Catalog # :	35018ET3GKD449T-W22			
Frame : 447/9T Output : 350 HP (260 kW) Poles : 4 Frequency : 60 Hz Rated voltage : 460 V Rated current : 399 A L. R. Amperes : 3192 A LRC : 8.0x(Code J) No load current : 135 A Rated speed : 1785 rpm Slip : 0.83 % Rated torque : 1030 ft.lb Locked rotor torque : 280 % Breakdown torque : 280 % Insulation class : F Service factor : 1.15 Design : A	Locked rotor time : 25s (cold) 14s (hot) Temperature rise : 80 K Duty cycle : Cont.(S1) Ambient temperature : -20°C to +40°C Altitude : 1000 m.a.s.l. Protection degree : IP55 Cooling method : IC411 - TEFC Mounting : F-1 Rotation ¹ : Both (CW and CCW) Noise level ² : 75.0 dB(A) Starting method : Direct On Line Approx. weight ³ : 3058 lb			
Output	25% 50% 75% 100%			
Efficiency (%)	0.000 95.8 96.2 96.2			
Power Factor	0.00 0.73 0.82 0.85			
Foundation loads				
Max. traction	: 6157 lb			
Max. compression	: 9215 lb			
Bearing type	: <u>Drive end</u> NU-322 C3 <u>Non drive end</u> 6319 C3			
Sealing	: WSeal WSeal			
Lubrication interval	: 4000 h 8000 h			
Lubricant amount	: 60 g 45 g			
Lubricant type	: Mobil Polyrex EM			
Notes				
This revision replaces and cancel the previous one, which must be eliminated. (1) Looking the motor from the shaft end. (2) Measured at 1m and with tolerance of +3dB(A). (3) Approximate weight subject to changes after manufacturing process. (4) At 100% of full load.				
These are average values based on tests with sinusoidal power supply, subject to the tolerances stipulated in NEMA MG-1.				
Rev.	Changes Summary	Performed	Checked	Date
Performed by				
Checked by			Page	Revision
Date	13/04/2022		1 / 6	

TORQUE AND CURRENT VS SPEED CURVE

Three Phase Induction Motor - Squirrel Cage



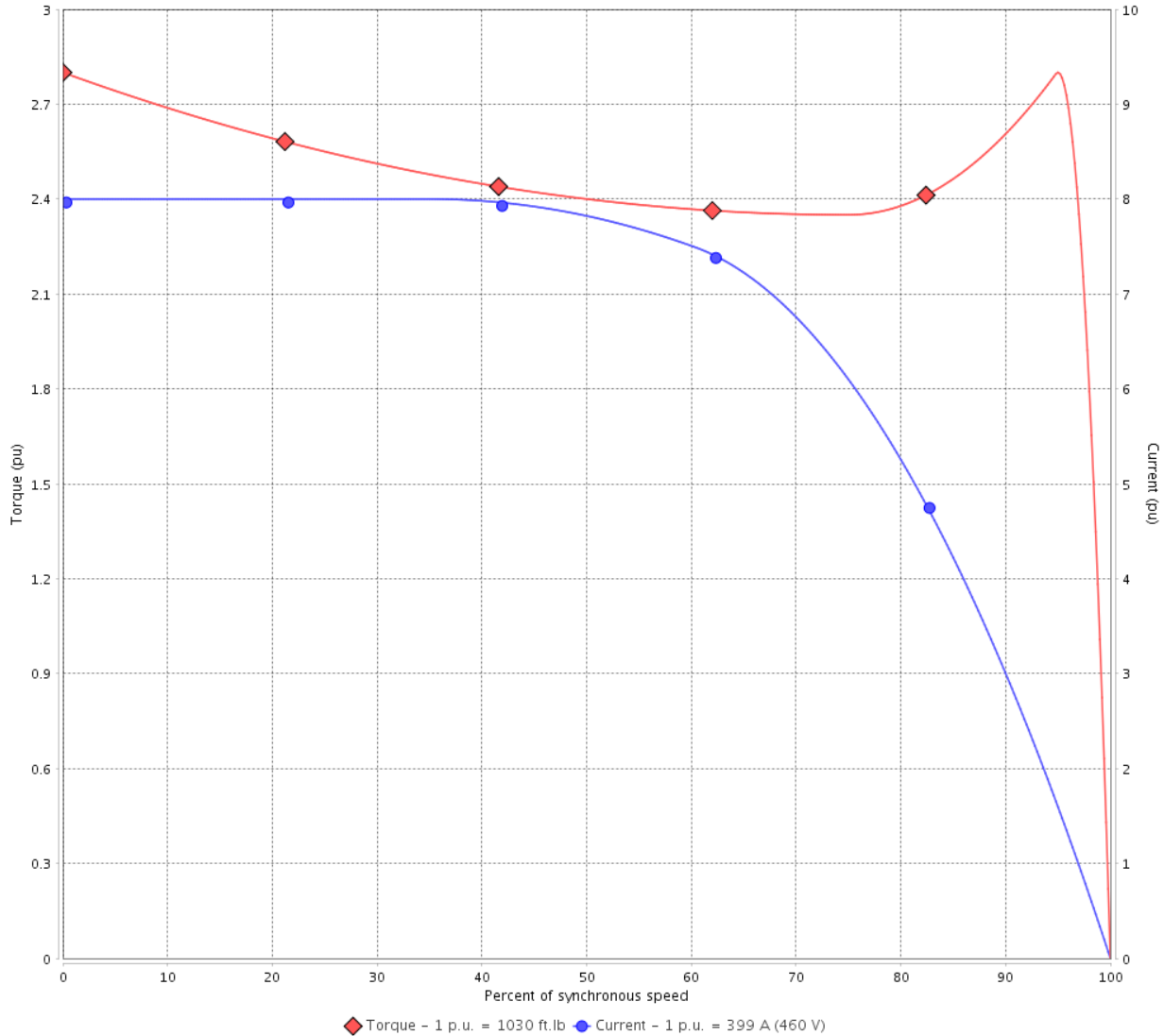
Customer :

Product line : NEMA Premium Efficiency Three-Phase

Product code : 13500655

Catalog # : 35018ET3GKD449T-W22

TORQUE AND CURRENT VS SPEED CURVE



Performance : 460 V 60 Hz 4P

Rated current	: 399 A	Moment of inertia (J)	
LRC	: 8.0	Duty cycle	: Cont.(S1)
Rated torque	: 1030 ft.lb	Insulation class	: F
Locked rotor torque	: 280 %	Service factor	: 1.15
Breakdown torque	: 280 %	Temperature rise	: 80 K
Rated speed	: 1785 rpm	Design	: A

Locked rotor time : 25s (cold) 14s (hot)

Rev.	Changes Summary	Performed	Checked	Date
Performed by			Page 2 / 6	Revision
Checked by				
Date	13/04/2022			

LOAD PERFORMANCE CURVE

Three Phase Induction Motor - Squirrel Cage

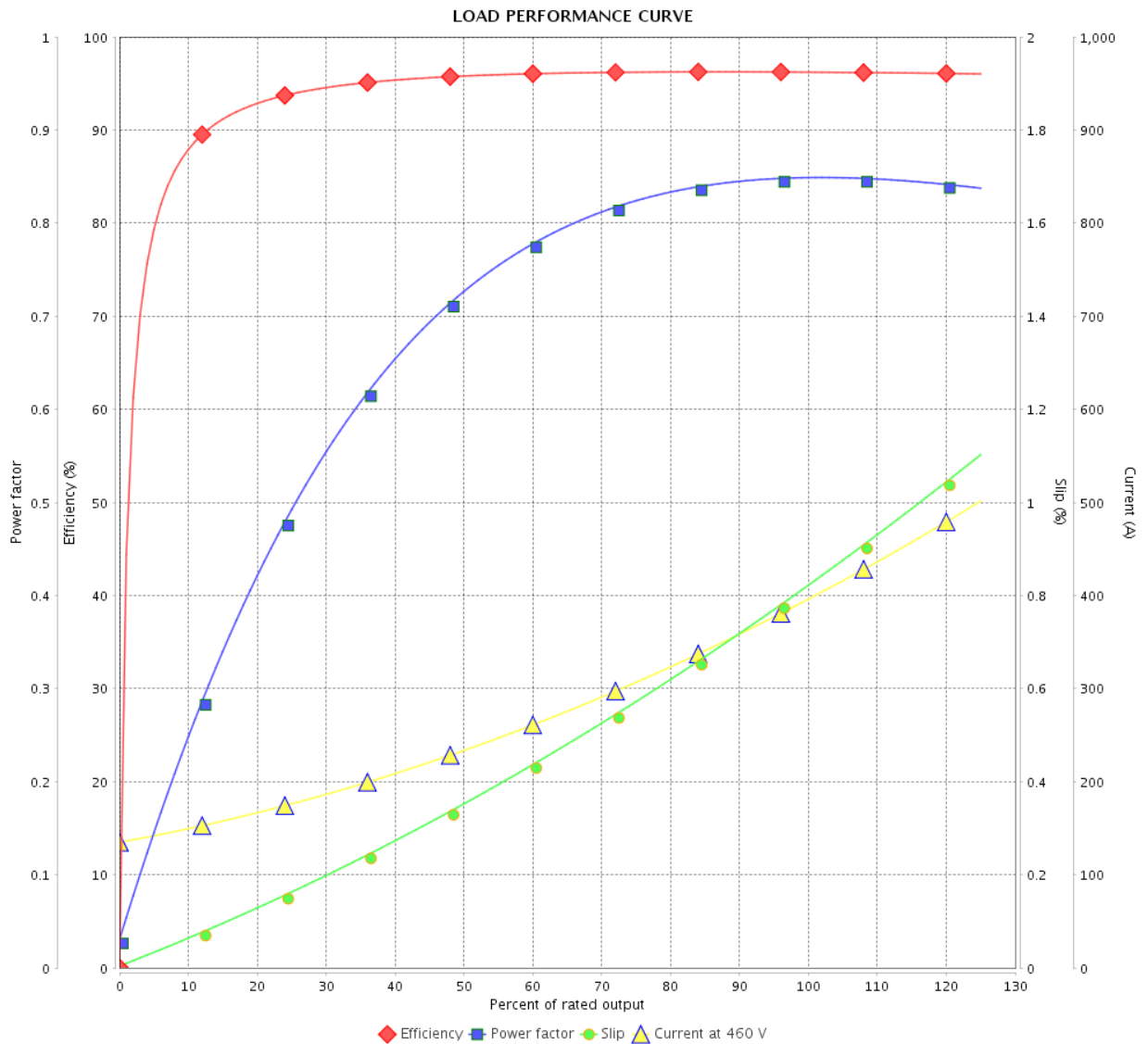


Customer :

Product line : NEMA Premium Efficiency Three-Phase

Product code : 13500655

Catalog # : 35018ET3GKD449T-W22



Performance : 460 V 60 Hz 4P

Rated current : 399 A
 LRC : 8.0
 Rated torque : 1030 ft.lb
 Locked rotor torque : 280 %
 Breakdown torque : 280 %
 Rated speed : 1785 rpm

Moment of inertia (J)
 Duty cycle : Cont.(S1)
 Insulation class : F
 Service factor : 1.15
 Temperature rise : 80 K
 Design : A

Rev.	Changes Summary	Performed	Checked	Date
Performed by		Page		Revision
Checked by		3 / 6		
Date		13/04/2022		

THERMAL LIMIT CURVE

Three Phase Induction Motor - Squirrel Cage



Customer :

Product line : NEMA Premium Efficiency Three-Phase
Product code : 13500655
Catalog # : 35018ET3GKD449T-W22

Performance : 460 V 60 Hz 4P

Rated current	: 399 A	Moment of inertia (J)	
LRC	: 8.0	Duty cycle	: Cont.(S1)
Rated torque	: 1030 ft.lb	Insulation class	: F
Locked rotor torque	: 280 %	Service factor	: 1.15
Breakdown torque	: 280 %	Temperature rise	: 80 K
Rated speed	: 1785 rpm	Design	: A

Heating constant

Cooling constant

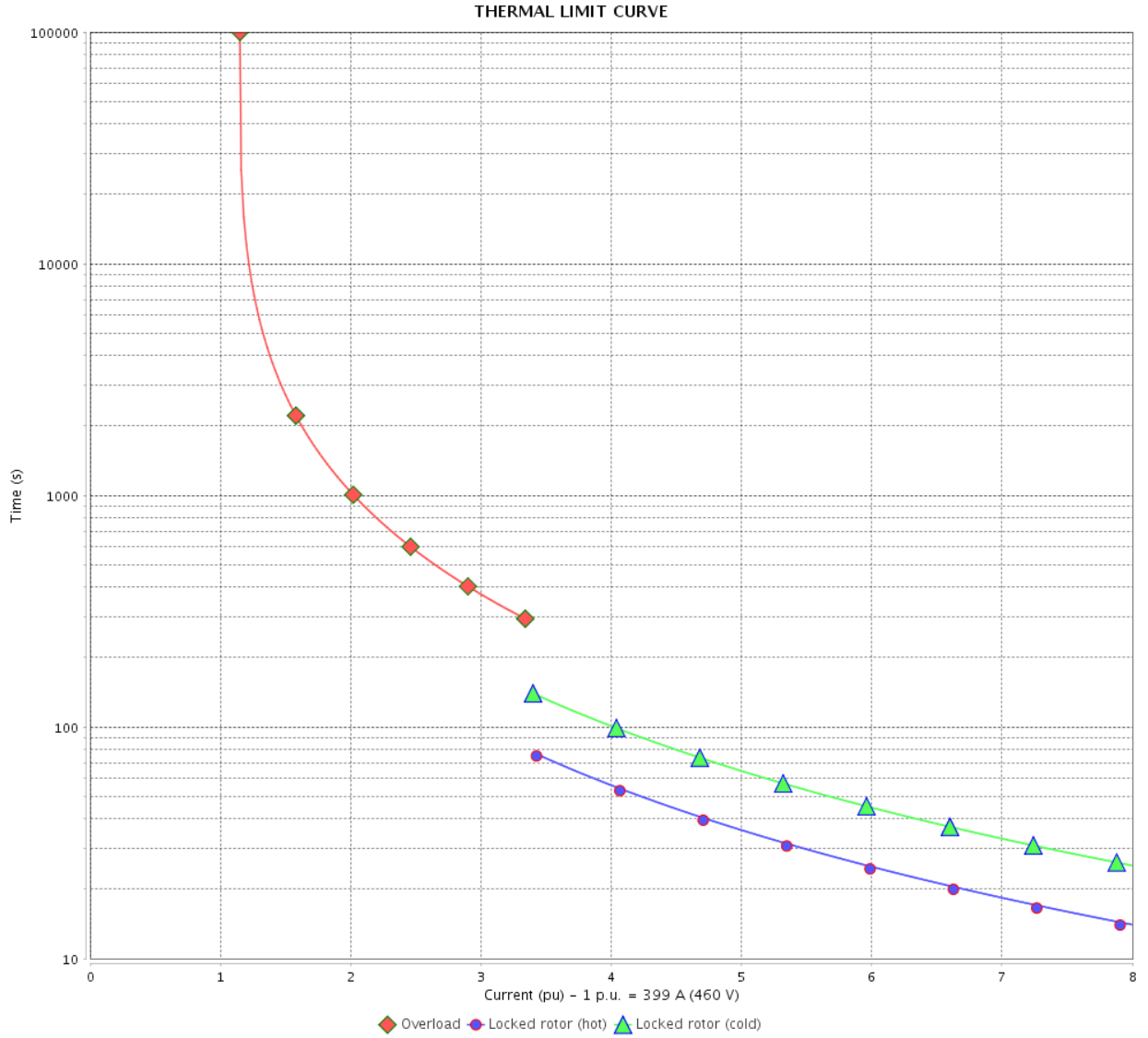
Rev.	Changes Summary	Performed	Checked	Date
Performed by				
Checked by			Page	Revision
Date	13/04/2022		4 / 6	

THERMAL LIMIT CURVE

Three Phase Induction Motor - Squirrel Cage



Customer : _____



Rev.	Changes Summary	Performed	Checked	Date
Performed by		Page 5 / 6		Revision
Checked by				
Date				

VFD OPERATION CURVE

Three Phase Induction Motor - Squirrel Cage

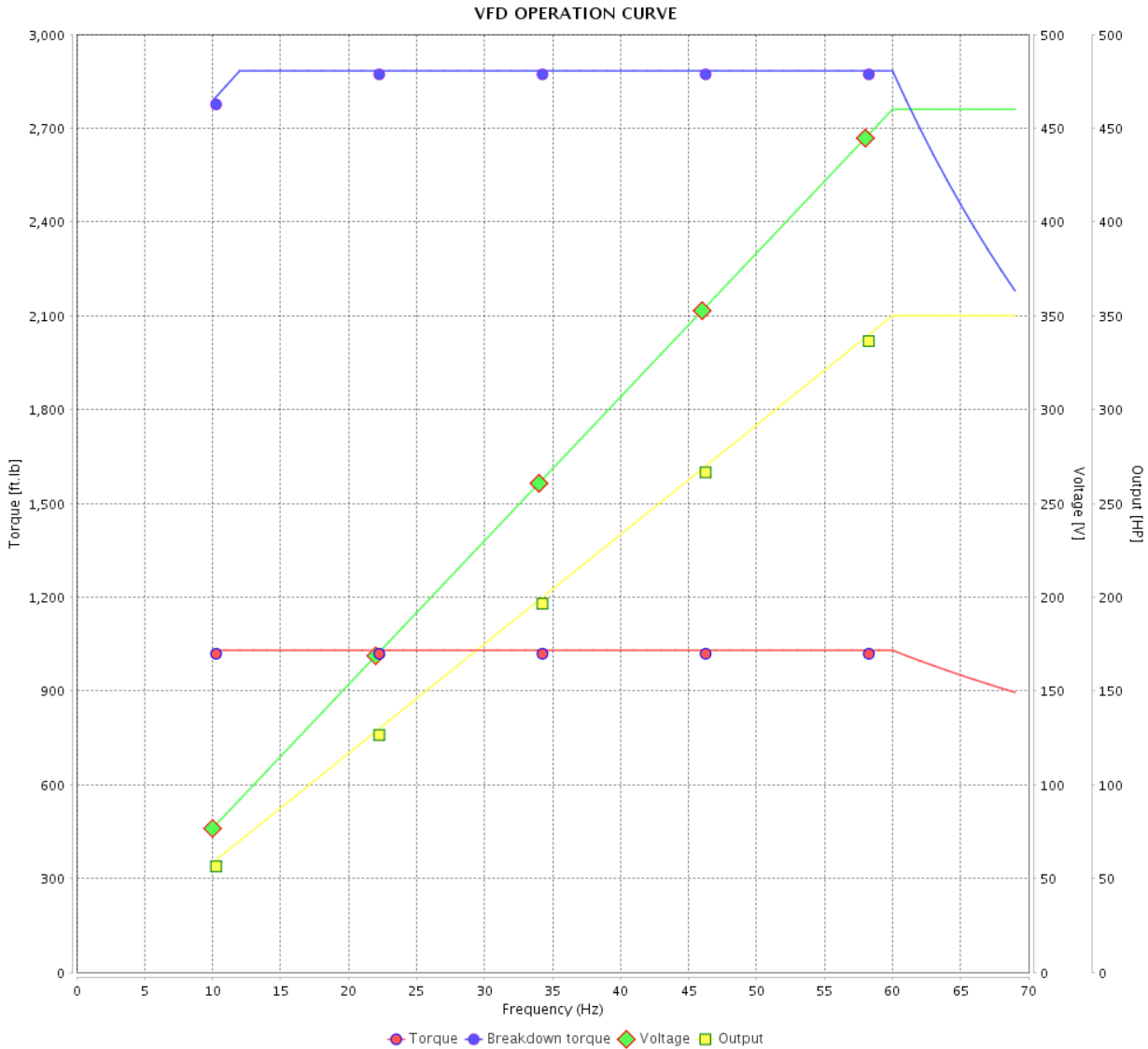


Customer :

Product line : NEMA Premium Efficiency Three-Phase

Product code : 13500655

Catalog # : 35018ET3GKD449T-W22



Performance : 460 V 60 Hz 4P

Rated current : 399 A
 LRC : 8.0
 Rated torque : 1030 ft.lb
 Locked rotor torque : 280 %
 Breakdown torque : 280 %
 Rated speed : 1785 rpm

Moment of inertia (J)
 Duty cycle : Cont.(S1)
 Insulation class : F
 Service factor : 1.15
 Temperature rise : 80 K
 Design : A

Rev.	Changes Summary	Performed	Checked	Date
Performed by			Page 6 / 6	Revision
Checked by				
Date	13/04/2022			

EIXO/SHAFT	
PADRÃO/STANDARD	X
OPCIONAL/OPTIONAL	
ESPECIAL/SPECIAL	

Dimensões em polegada
Dimensions in inches

THIS IS AN UPDATED REVISION, THE PREVIOUS ONE MUST BE DISREGARDED.

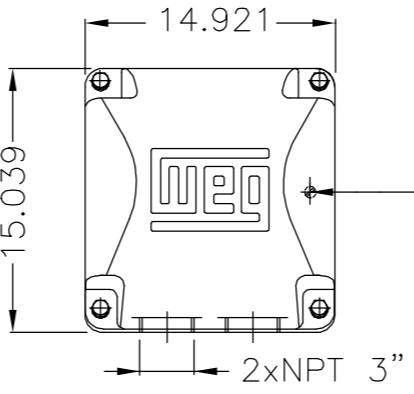
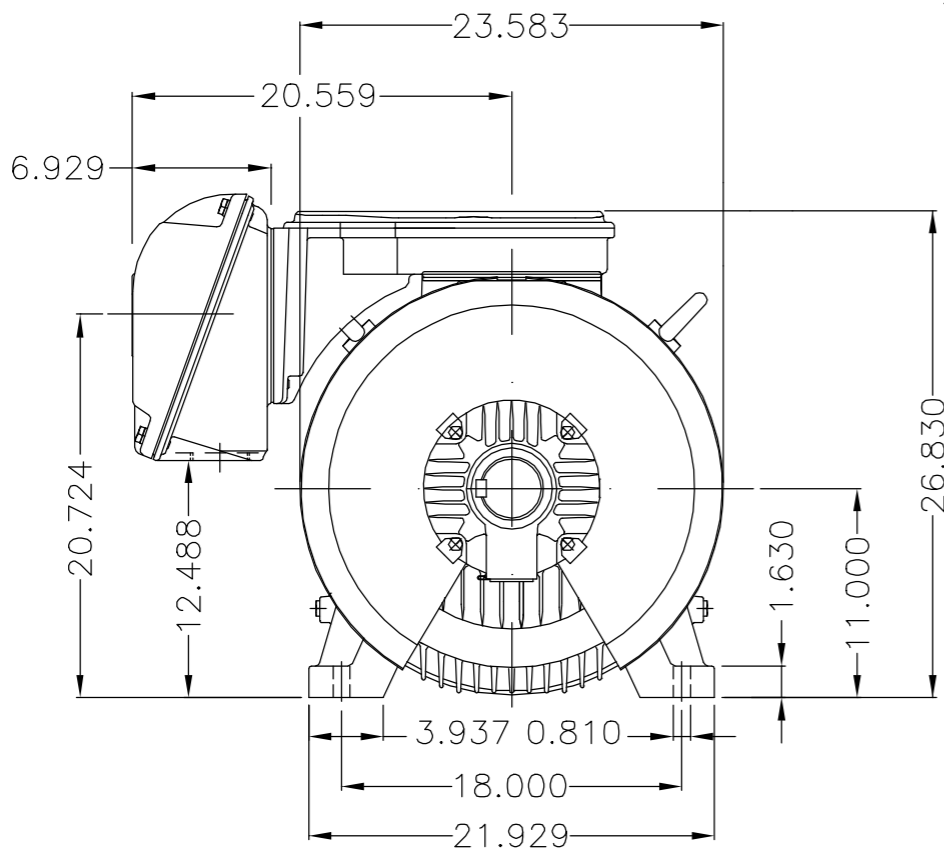
A

B

C

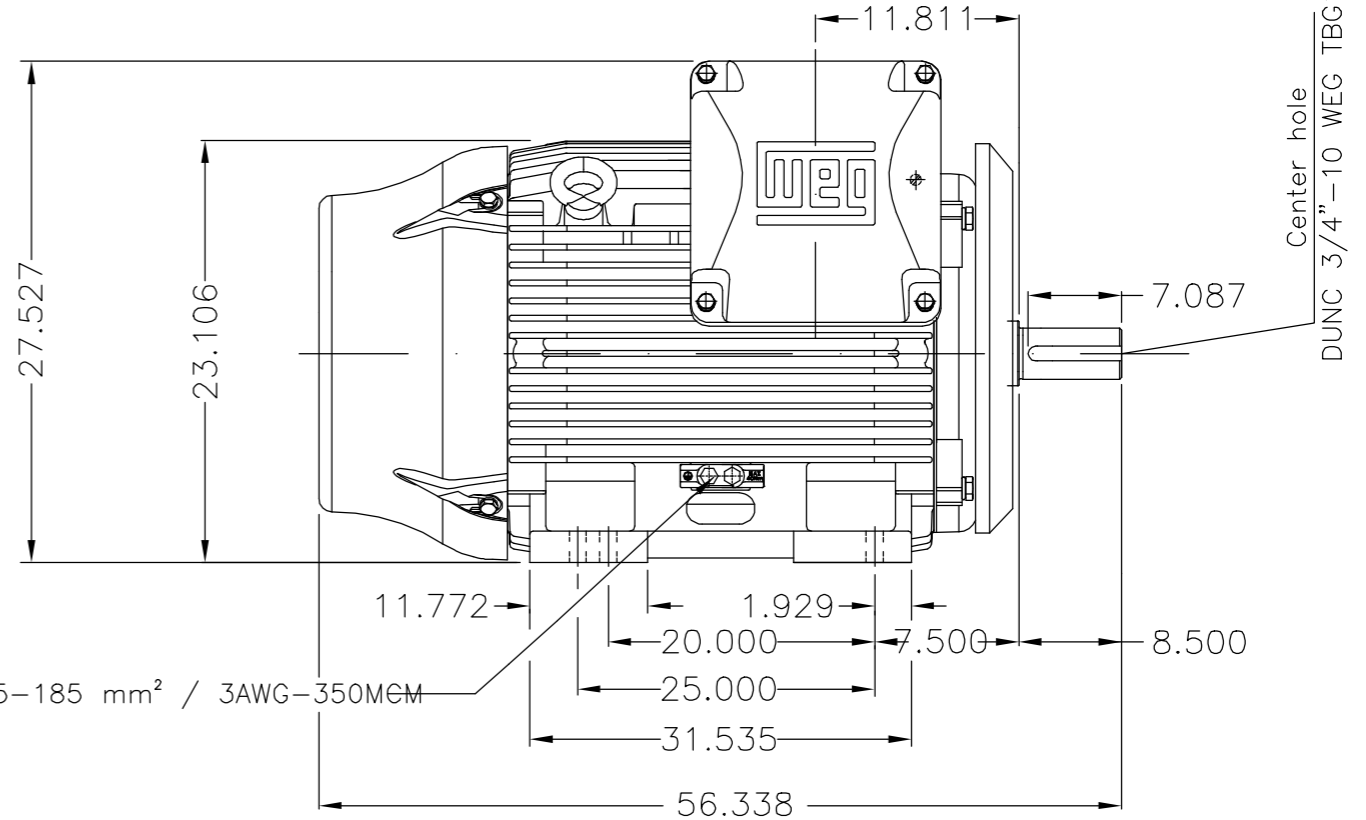
D

E



Main terminal box

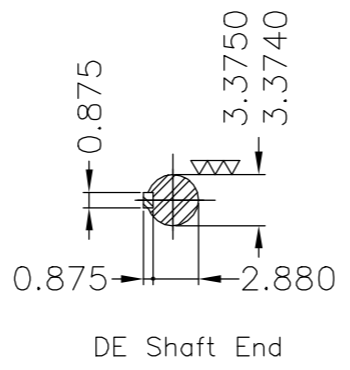
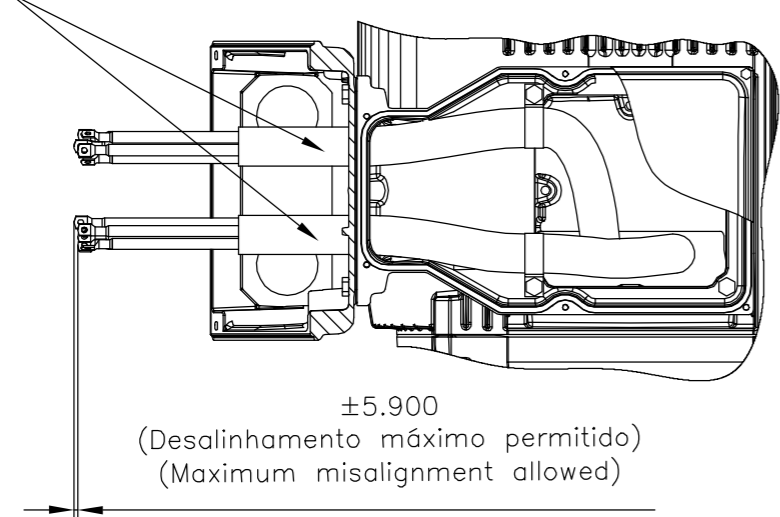
Grounding for leads 35-70 mm² / 1-2/0 AWG



Grounding for leads 25-185 mm² / 3AWG-350MEM

Center hole
DUNC 3/4"-10 WEG TBG12

Fixar o conduíte no suporte com abraçadeiras.
Fasten the conduit on support with cables ties.



DE Shaft End

Linha do motor: Crusher Duty / Motor purpose: Crusher Duty	
Rolamento dianteiro de rolos / DE roller bearing	
Conduíte para cabos no interior do suporte da caixa de ligação	
Cables conduit inside terminal box support	
Dispositivo de travamento de eixo / Shaft locking device	
Cor RAL 5009 / Color RAL 5009	
Plano de pintura 203A / Painting plan 203A	
Forma construtiva B3D / Mounting B3R(D)	
WEG EQUIPAMENTOS ELÉTRICOS S/A	

E	500001474636	RET. LINHAS DE POTÊNCIA INCORRETAS	DCARDOSO	SAORIN	SAORIN	09.07.2018	05		
	500001331189	ADIC.NOTA CONDUITE/ADD NOTE CONDUIT	MENSOR	EANJOS	EANJOS	05.07.2017	04		
D	ECM	LOC	SUMMARY OF MODIFICATIONS		EXECUTED	CHECKED	RELEASED	DATE	VER
C	EXECUTED	GABRIELID	THREE PHASE W22 MOTOR FRAME 447/9T IP55 TEFC		10004923929		000 05		
B	CHECKED	JMANENTE							
A	RELEASED	JMANENTE							
A	REL DT	09.05.2017	WMO	Jaragua do Sul	Product Engineering	SHEET	1 / 1		

UNCONTROLLED COPY

RELEASED

ZME A3

MADE IN BRAZIL
13500655



FOR SAFE AREA
Mod.TE1BFOXON
CC029A



Class I, Div 2, Gr A, B, C and D - T3
Class I, Zone 2, IIC - T3
Class II, Div 2, Gr F and G - T3C
For use on PWM: Gr. A, B, C, D and F,
VT 1000:1, CT 6:1, 1.00SF - T3

MODEL 35018ET3GKD449T-W22

Inverter Duty Motor
Severe Duty

PH3 60Hz Fr. 447/9T 1000m.a.s.l. IP55 TEFC 3067lb

V 460

A 399

HP 350

kW 260

SF 1.15

SFA 459

RPM 1785

PF 0.85

AMB 40°C

INS cl. F DT80K

NEMA NOM EFF 96.2%

DUTY CONT.

DES A Code J

PART-WINDING

START



RUN

T12-T10-T11



WYE-DELTA

START



RUN



→ NU-322-C3 (60g)

→ 6319-C3 (45g)



MOBIL POLYREX EM (4000h)

