

DATA SHEET



Three Phase Induction Motor - Squirrel Cage

| | | | | |
|--------------------------------------------------------------------------------------------------------------------------------------------------------------------------------------------------------------------------------------------------------------------------------------------------------------------------------------------------------------------------------------------------------------|---------------------------------------------------------------------------------------------------------------------------------------------------------------------------------------------------------------------------------------------------------------------------------------------------------------------------------------------------------------------------------------------------------------------|-----------|---------|----------|
| Customer : | | | | |
| Product line | : NEMA Premium Efficiency Three-Phase | | | |
| Product code : | 13827808 | | | |
| Catalog # : | 35018ET3HKD580Z-W22 | | | |
| Frame : 586/7TZ Output : 350 HP (260 kW) Poles : 4 Frequency : 60 Hz Rated voltage : 575 V Rated current : 327 A L. R. Amperes : 2453 A LRC : 7.5x(Code H) No load current : 128 A Rated speed : 1786 rpm Slip : 0.78 % Rated torque : 1030 ft.lb Locked rotor torque : 250 % Breakdown torque : 270 % Insulation class : F Service factor : 1.15 Design : A | Locked rotor time : 45s (cold) 25s (hot) Temperature rise : 80 K Duty cycle : Cont.(S1) Ambient temperature : -20°C to +40°C Altitude : 1000 m.a.s.l. Protection degree : IP55 Cooling method : IC411 - TEFC Mounting : F-1 Rotation ¹ : Both (CW and CCW) Noise level ² : 78.0 dB(A) Starting method : Direct On Line Approx. weight ³ : 3455 lb | | | |
| Output | 25% 50% 75% 100% | | | |
| Efficiency (%) | 0.000 95.8 96.2 96.2 | | | |
| Power Factor | 0.00 0.68 0.79 0.83 | | | |
| Foundation loads | | | | |
| Max. traction | : 4069 lb | | | |
| Max. compression | : 7524 lb | | | |
| Bearing type | : <u>Drive end</u> NU-324 C3 <u>Non drive end</u> 6319 C3 | | | |
| Sealing | : Taconite Labyrinth Taconite Labyrinth | | | |
| Lubrication interval | : 3000 h 8000 h | | | |
| Lubricant amount | : 72 g 45 g | | | |
| Lubricant type | : Mobil Polyrex EM | | | |
| Notes | | | | |
| This revision replaces and cancel the previous one, which must be eliminated. (1) Looking the motor from the shaft end. (2) Measured at 1m and with tolerance of +3dB(A). (3) Approximate weight subject to changes after manufacturing process. (4) At 100% of full load. | | | | |
| These are average values based on tests with sinusoidal power supply, subject to the tolerances stipulated in NEMA MG-1. | | | | |
| Rev. | Changes Summary | Performed | Checked | Date |
| Performed by | | | | |
| Checked by | | | Page | Revision |
| Date | 13/04/2022 | | 1 / 7 | |

DATA SHEET

Three Phase Induction Motor - Squirrel Cage



Customer : _____

Space heater information

Voltage: 200 - 240 V

| Rev. | Changes Summary | Performed | Checked | Date |
|--------------|-----------------|-----------|---------------|----------|
| Performed by | | | | |
| Checked by | | | | |
| Date | 13/04/2022 | | Page 2 / 7 | Revision |

TORQUE AND CURRENT VS SPEED CURVE



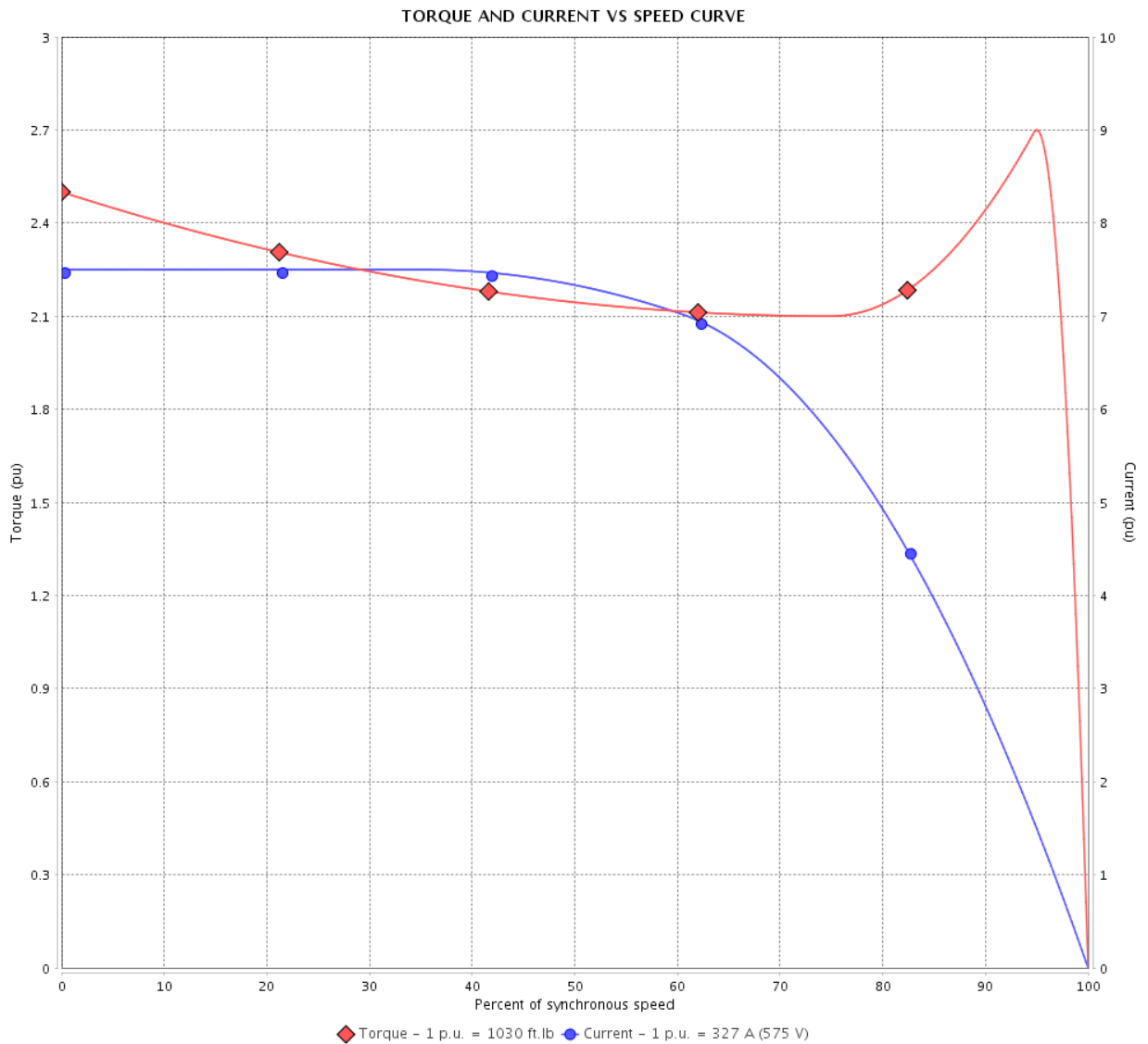
Three Phase Induction Motor - Squirrel Cage

Customer :

Product line : NEMA Premium Efficiency Three-Phase

Product code : 13827808

Catalog # : 35018ET3HKD580Z-W22



Performance : 575 V 60 Hz 4P

Rated current : 327 A
 LRC : 7.5
 Rated torque : 1030 ft.lb
 Locked rotor torque : 250 %
 Breakdown torque : 270 %
 Rated speed : 1786 rpm

Moment of inertia (J)
 Duty cycle : Cont.(S1)
 Insulation class : F
 Service factor : 1.15
 Temperature rise : 80 K
 Design : A

Locked rotor time : 45s (cold) 25s (hot)

| Rev. | Changes Summary | Performed | Checked | Date |
|--------------|-----------------|-----------|---------------|----------|
| | | | | |
| Performed by | | | Page 3 / 7 | Revision |
| Checked by | | | | |
| Date | 13/04/2022 | | | |

LOAD PERFORMANCE CURVE

Three Phase Induction Motor - Squirrel Cage

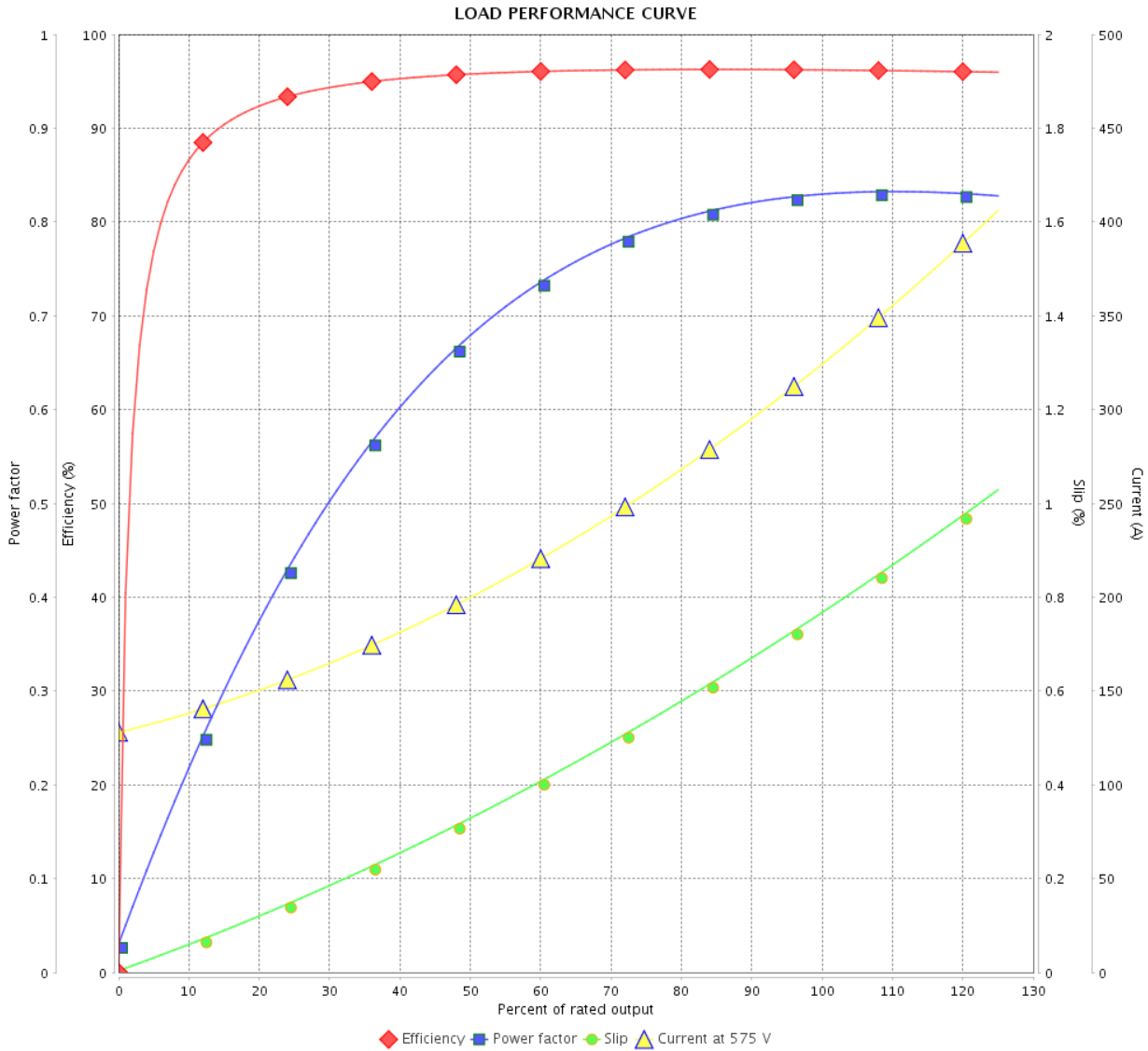


Customer : _____

Product line : NEMA Premium Efficiency Three-Phase

Product code : 13827808

Catalog # : 35018ET3HKD580Z-W22



Performance : 575 V 60 Hz 4P

Rated current : 327 A
 LRC : 7.5
 Rated torque : 1030 ft.lb
 Locked rotor torque : 250 %
 Breakdown torque : 270 %
 Rated speed : 1786 rpm

Moment of inertia (J)
 Duty cycle : Cont.(S1)
 Insulation class : F
 Service factor : 1.15
 Temperature rise : 80 K
 Design : A

| Rev. | Changes Summary | Performed | Checked | Date |
|--------------|-----------------|-----------|---------|----------|
| | | | | |
| Performed by | | | Page | Revision |
| Checked by | | | 4 / 7 | |
| Date | 13/04/2022 | | | |

THERMAL LIMIT CURVE



Three Phase Induction Motor - Squirrel Cage

Customer :

Product line : NEMA Premium Efficiency Three-Phase
 Product code : 13827808
 Catalog # : 35018ET3HKD580Z-W22

Performance : 575 V 60 Hz 4P

| | |
|-----------------------------|-------------------------|
| Rated current : 327 A | Moment of inertia (J) |
| LRC : 7.5 | Duty cycle : Cont.(S1) |
| Rated torque : 1030 ft.lb | Insulation class : F |
| Locked rotor torque : 250 % | Service factor : 1.15 |
| Breakdown torque : 270 % | Temperature rise : 80 K |
| Rated speed : 1786 rpm | Design : A |

Heating constant
 Cooling constant

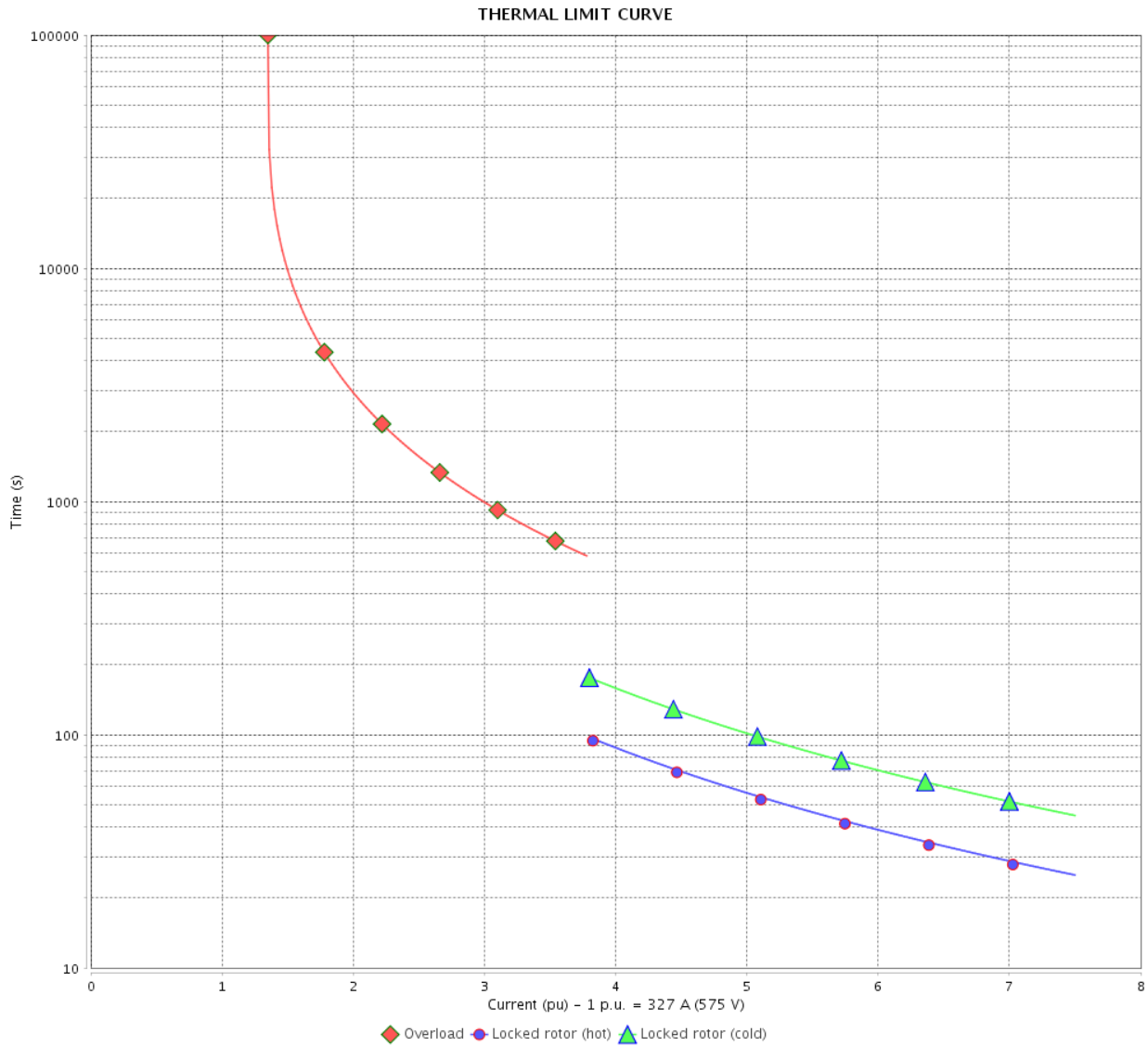
| Rev. | Changes Summary | Performed | Checked | Date |
|--------------|-----------------|-----------|---------|----------|
| | | | | |
| Performed by | | | | |
| Checked by | | | Page | Revision |
| Date | 13/04/2022 | | 5 / 7 | |

THERMAL LIMIT CURVE

Three Phase Induction Motor - Squirrel Cage



Customer : _____



| Rev. | Changes Summary | Performed | Checked | Date |
|--------------|-----------------|---------------|---------|----------|
| | | | | |
| Performed by | | Page 6 / 7 | | Revision |
| Checked by | | | | |
| Date | | | | |

VFD OPERATION CURVE

Three Phase Induction Motor - Squirrel Cage

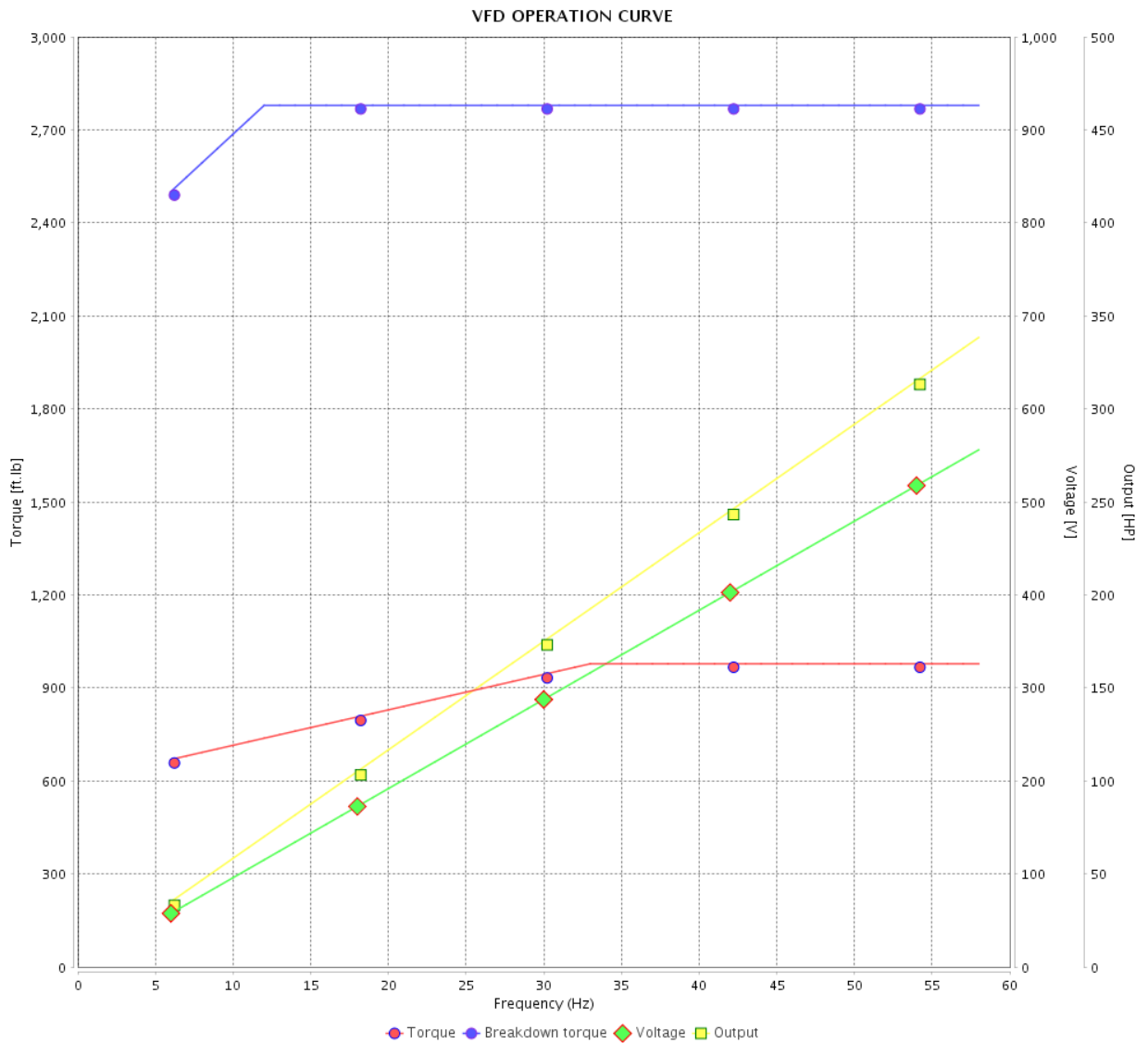


Customer :

Product line : NEMA Premium Efficiency Three-Phase

Product code : 13827808

Catalog # : 35018ET3HKD580Z-W22



Performance : 575 V 60 Hz 4P

Rated current : 327 A
 LRC : 7.5
 Rated torque : 1030 ft.lb
 Locked rotor torque : 250 %
 Breakdown torque : 270 %
 Rated speed : 1786 rpm

Moment of inertia (J)
 Duty cycle : Cont.(S1)
 Insulation class : F
 Service factor : 1.15
 Temperature rise : 80 K
 Design : A

| Rev. | Changes Summary | Performed | Checked | Date |
|--------------|-----------------|-----------|---------------|----------|
| | | | | |
| Performed by | | | Page 7 / 7 | Revision |
| Checked by | | | | |
| Date | 13/04/2022 | | | |

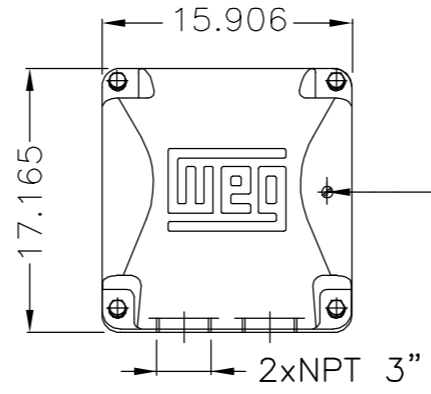
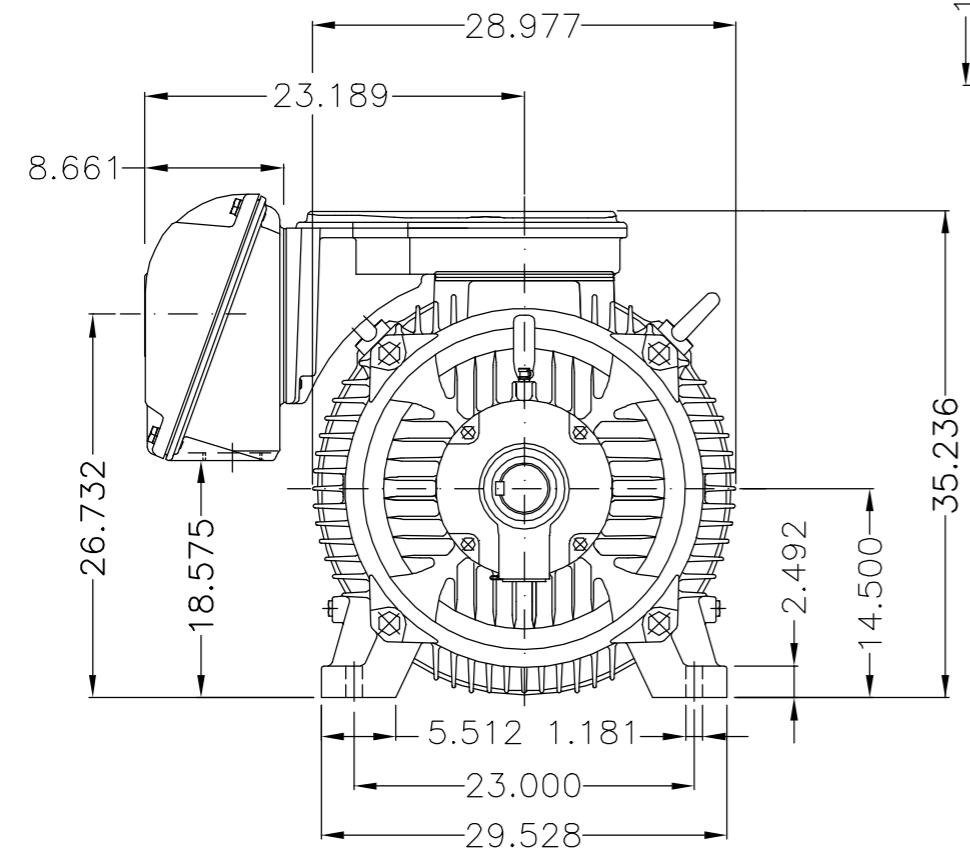
| | |
|-------------------|---|
| EIXO/SHAFT | |
| PADRÃO/STANDARD | |
| OPCIONAL/OPTIONAL | |
| ESPECIAL/SPECIAL | X |

Dimensões em polegada
Dimensions in inches

CERTIFIED WEG MOTORES
Certified document.
Not subject to changes.

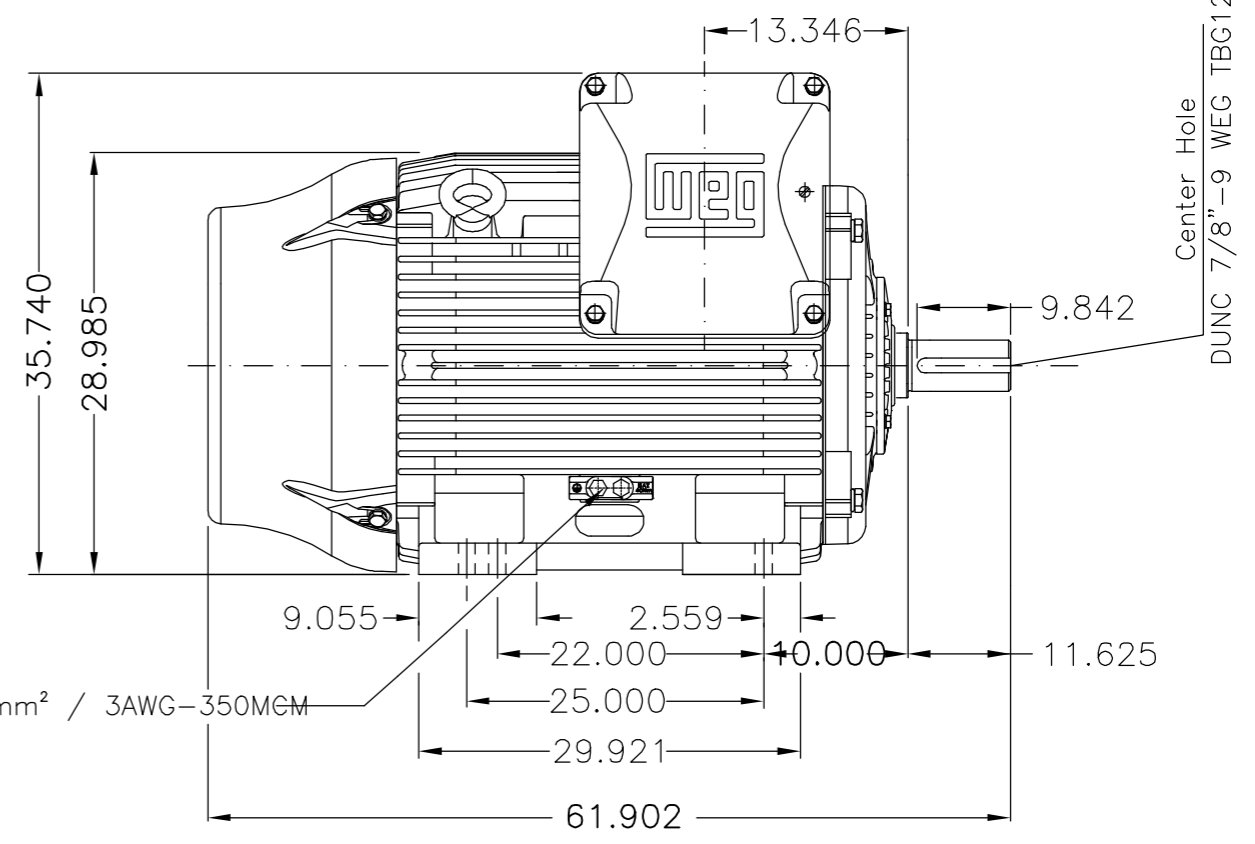
THIS IS AN UPDATED REVISION, THE PREVIOUS ONE MUST BE DISREGARDED.

A
B
C
D
E

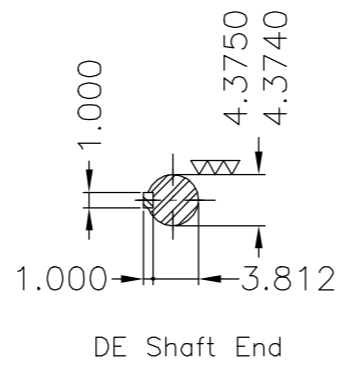


Main terminal box

Grounding for leads 35-120 mm² / 1-4/0 AWG



Grounding for leads 25-185 mm² / 3AWG-350MCM



DE Shaft End

- Rolamento dianteiro de rolos NU-324 / NU-324 DE roller bearing
- Tampa dianteira especial / Special DE endshield
- Categoria A / Design A
- Rolamento dianteiro de rolos / DE roller bearing
- Dispositivo de travamento de eixo / Shaft locking device
- Tampa traseira com mancal eletricamente isolado / NDE endshield with electrically insulated
- Cor RAL 5009 / Color RAL 5009
- Plano de pintura 203A / Painting plan 203A
- Forma construtiva NEMA F-1 / Mounting NEMA F-1
- Forma construtiva B3D / Mounting B3R(D)

WEG ELECTRIC CORPORATION - WEC

| | | | | | | | |
|--------------|------------|--------------------------------------------------------------------|---------------------|----------|------------|----------|--|
| 500001245282 | | ALT. CONF. CLAIM 414481094 | DVEGINI | NSCHMIDT | 23.11.2016 | 01 | |
| 500001245282 | | DOCUMENTO NOVO | DVEGINI | NSCHMIDT | 23.11.2016 | 00 | |
| ECM | LOC | SUMMARY OF MODIFICATIONS | EXECUTED | CHECKED | RELEASED | DATE VER | |
| EXECUTED | DVEGINI | THREE PHASE W22 MOTOR - NEMA PREMIUM EFF FRAME 586/7Z IP55 TEFC | 10004622356 | | | | |
| CHECKED | | | | | | | |
| RELEASED | NSCHMIDT | | | | | | |
| REL DT | 23.11.2016 | WMO Jaraguá do Sul | Product Engineering | SHEET | 1 / 1 | | |

| | | | | | |
|--------|----------|------|-------------|----------|---|
| 350 HP | 04 Poles | 60Hz | 414481094/0 | ELET/MEC | B |
| 300 HP | 06 Poles | 60Hz | 414481009/0 | ELET/MEC | A |

UNCONTROLLED COPY
RELEASED
ZME A3

MODEL 35018ET3HKD580Z-W22
MADE IN MEXICO
13827808



*Inverter Duty Motor
Severe Duty*

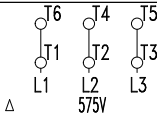


FOR SAFE AREA
MOD.TE1BFOXON



Class I, Div 2, Gr. A, B, C and D - T3
Class I, Zone 2, IIC - T3
Class II, Div 2, Gr. F and G - T3C
For use on PWM, Gr. A, B, C, D and F,
VT 1000:1, CT 6:1, 1.0SF, T3

| | | | | |
|--------------|------------|-----------------|----------------------------|-----------|
| PH 3 | FR 586/7TZ | HP(kW) 350(260) | | Hz 60 |
| V 575 | | A 327 | | IP55 |
| NEMA NOM EFF | | 96.2 | % | RPM 1786 |
| ENCL TEFC | DUTY CONT. | | INS. CL. F Δ T 80 K | |
| PF 0.83 | | DES A | CODE H | AMB. 40°C |
| SF 1.15 | SFA 376 | | ALT 1000 m.a.s.l. | |



→ NU-324-C3(72g) MOBIL POLYREX EM
→ 6319-C3(45g) 3000 h

3750 Lbs