

DATA SHEET

Three Phase Induction Motor - Squirrel Cage



Customer					
Product line	: NEMA Premium Efficiency Three-Phase	Product code	: 14439979		
		Catalog #	: 35036ET3G449TS-W22		
Frame	: 447/9TS	Cooling method	: IC411 - TEFC		
Insulation class	: F	Mounting	: F-1		
Duty cycle	: Cont.(S1)	Rotation ¹	: Both (CW and CCW)		
Ambient temperature	: -20°C to +40°C	Starting method	: Direct On Line		
Altitude	: 1000 m.a.s.l.	Approx. weight ²	: 2983 lb		
Protection degree	: IP55	Moment of inertia (J)	: 68.1 sq.ft.lb		
Design	: A				
Output [HP]	350	300	300	300	300
Poles	2	2	2	2	2
Frequency [Hz]	60	50	50	50	50
Rated voltage [V]	460	380	400	415	415
Rated current [A]	385	388	375	362	362
L. R. Amperes [A]	3273	3026	3338	3511	3511
LRC [A]	8.5x(Code J)	7.8x(Code H)	8.9x(Code J)	9.7x(Code K)	9.7x(Code K)
No load current [A]	105	105	110	115	115
Rated speed [RPM]	3575	2972	2975	2978	2978
Slip [%]	0.69	0.93	0.83	0.73	0.73
Rated torque [ft.lb]	514	530	530	529	529
Locked rotor torque [%]	240	229	250	270	270
Breakdown torque [%]	250	270	300	340	340
Service factor	1.15	1.15	1.15	1.15	1.15
Temperature rise	80 K	105 K	105 K	105 K	105 K
Locked rotor time	18s (cold) 10s (hot)	14s (cold) 8s (hot)	14s (cold) 8s (hot)	14s (cold) 8s (hot)	14s (cold) 8s (hot)
Noise level ²	81.0 dB(A)				
Efficiency (%)	25%				
	50%	95.4	95.4	95.4	95.4
	75%	96.2	95.8	95.8	96.2
	100%	96.2	95.8	96.2	96.2
Power Factor	25%				
	50%	0.80	0.80	0.78	0.75
	75%	0.86	0.85	0.85	0.84
	100%	0.88	0.90	0.88	0.88
Bearing type	: Drive end : 6314 C3	Non drive end : 6314 C3	Foundation loads		
Sealing	: WSeal	WSeal	Max. traction	: 3303 lb	
Lubrication interval	: 4000 h	4000 h	Max. compression	: 6286 lb	
Lubricant amount	: 27 g	27 g			
Lubricant type	: Mobil Polyrex EM				
Notes					
This revision replaces and cancel the previous one, which must be eliminated. (1) Looking the motor from the shaft end. (2) Measured at 1m and with tolerance of +3dB(A). (3) Approximate weight subject to changes after manufacturing process. (4) At 100% of full load.			These are average values based on tests with sinusoidal power supply, subject to the tolerances stipulated in NEMA MG-1.		
Rev.	Changes Summary		Performed	Checked	Date
Performed by					
Checked by				Page	Revision
Date	13/04/2022			1 / 21	

TORQUE AND CURRENT VS SPEED CURVE

Three Phase Induction Motor - Squirrel Cage



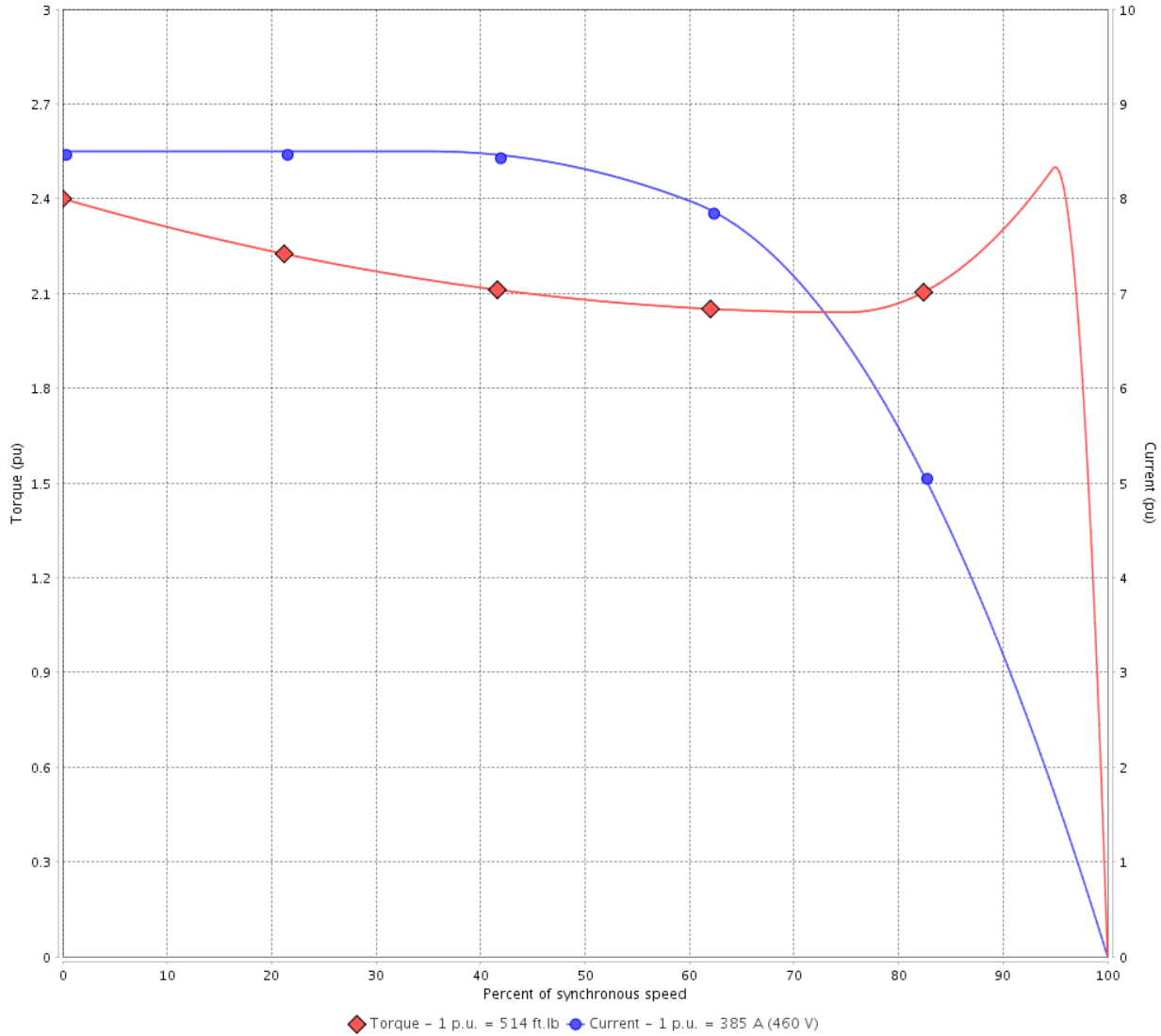
Customer :

Product line : NEMA Premium Efficiency Three-Phase

Product code : 14439979

Catalog # : 35036ET3G449TS-W22

TORQUE AND CURRENT VS SPEED CURVE



Performance : 460 V 60 Hz 2P

Rated current	: 385 A	Moment of inertia (J)	: 68.1 sq.ft.lb
LRC	: 8.5	Duty cycle	: Cont.(S1)
Rated torque	: 514 ft.lb	Insulation class	: F
Locked rotor torque	: 240 %	Service factor	: 1.15
Breakdown torque	: 250 %	Temperature rise	: 80 K
Rated speed	: 3575 rpm	Design	: A

Locked rotor time : 18s (cold) 10s (hot)

Rev.	Changes Summary	Performed	Checked	Date
Performed by			Page 2 / 21	Revision
Checked by				
Date	13/04/2022			

TORQUE AND CURRENT VS SPEED CURVE



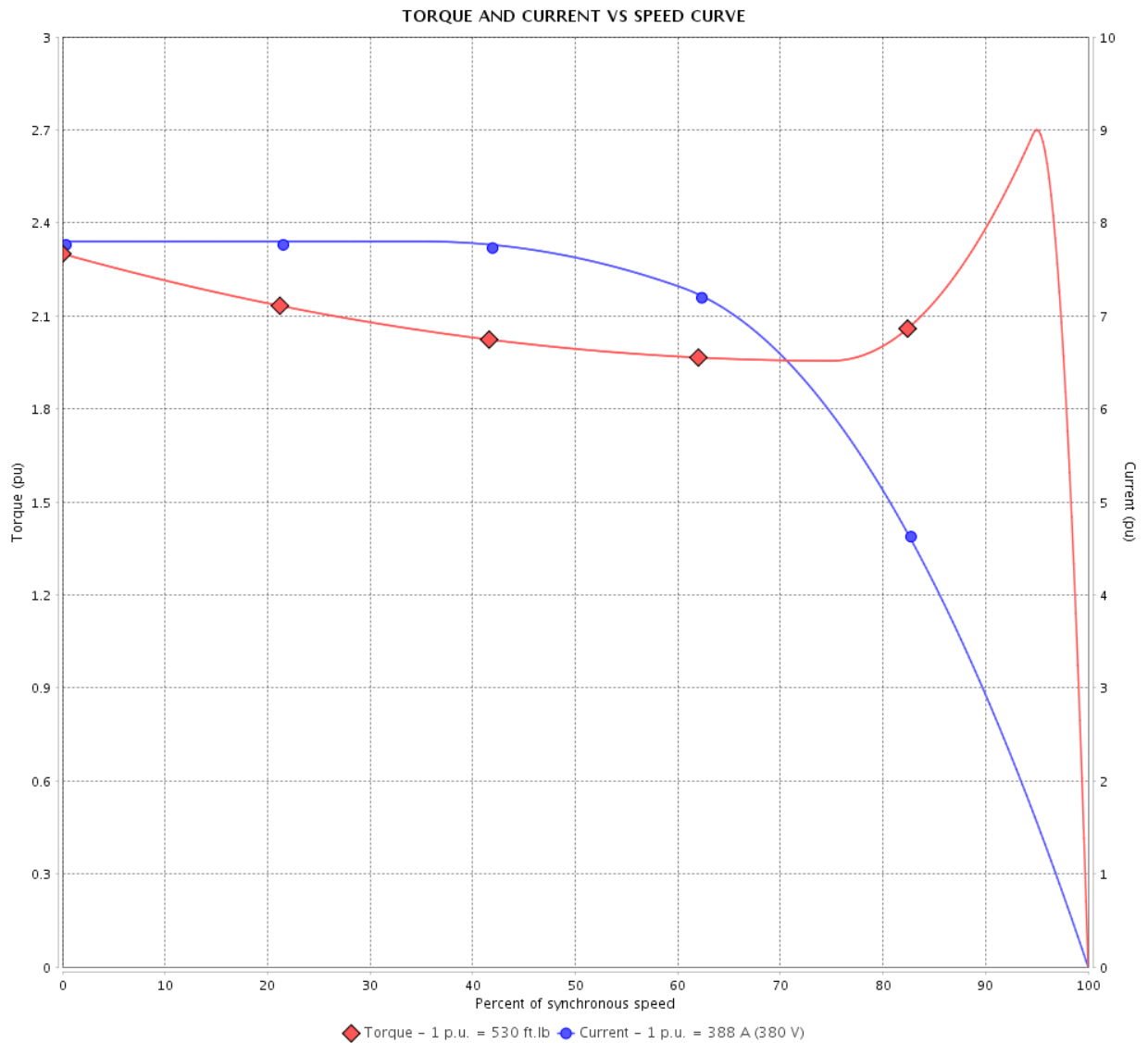
Three Phase Induction Motor - Squirrel Cage

Customer :

Product line : NEMA Premium Efficiency Three-Phase

Product code : 14439979

Catalog # : 35036ET3G449TS-W22



Performance : 380 V 50 Hz 2P IE3

Rated current	: 388 A	Moment of inertia (J)	: 68.1 sq.ft.lb
LRC	: 7.8	Duty cycle	: Cont.(S1)
Rated torque	: 530 ft.lb	Insulation class	: F
Locked rotor torque	: 229 %	Service factor	: 1.15
Breakdown torque	: 270 %	Temperature rise	: 105 K
Rated speed	: 2972 rpm	Design	: A

Locked rotor time : 14s (cold) 8s (hot)

Rev.	Changes Summary	Performed	Checked	Date
Performed by			Page 3 / 21	Revision
Checked by				
Date	13/04/2022			

TORQUE AND CURRENT VS SPEED CURVE

Three Phase Induction Motor - Squirrel Cage



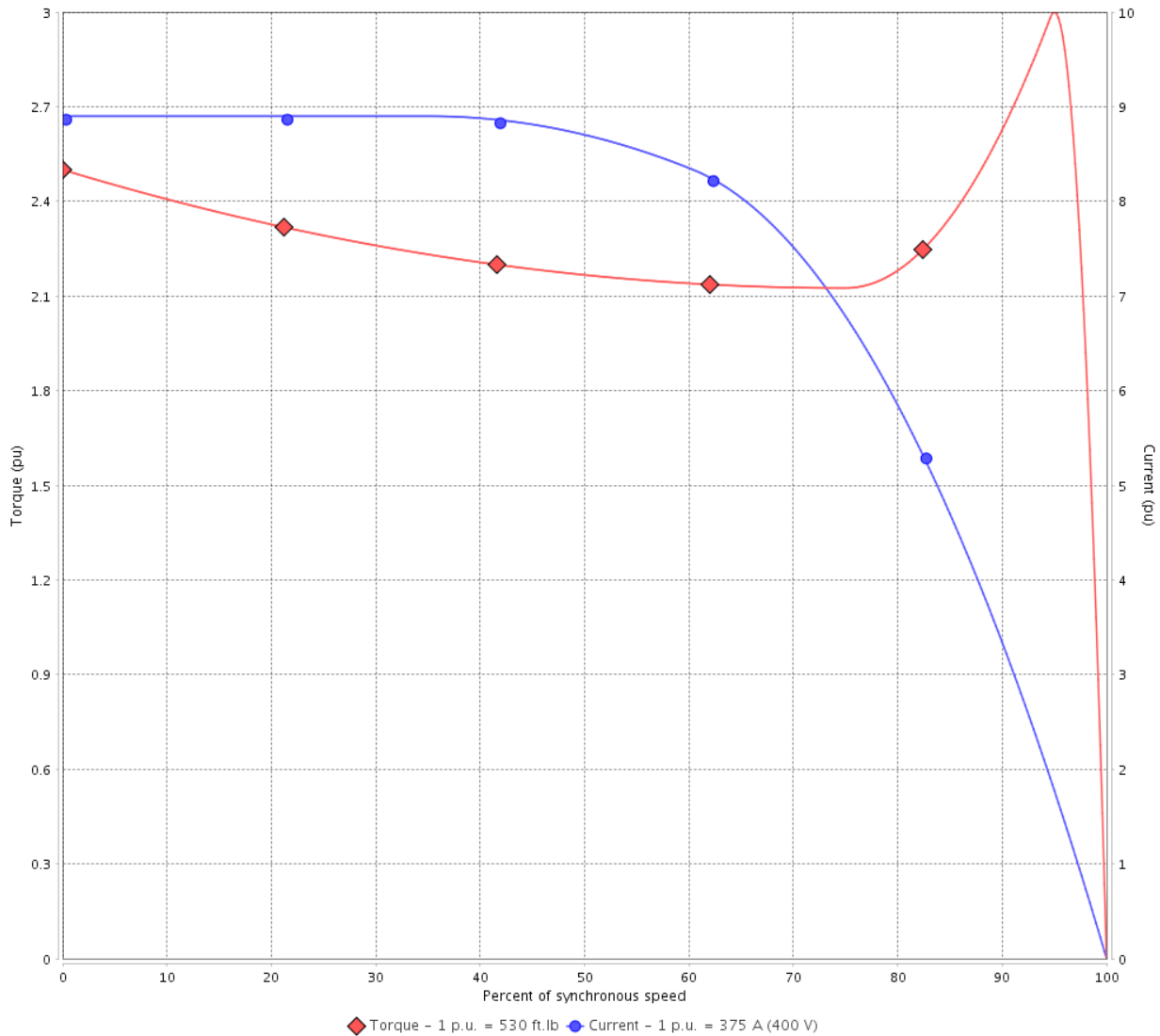
Customer :

Product line : NEMA Premium Efficiency Three-Phase

Product code : 14439979

Catalog # : 35036ET3G449TS-W22

TORQUE AND CURRENT VS SPEED CURVE



Performance : 400 V 50 Hz 2P IE3

Rated current	: 375 A	Moment of inertia (J)	: 68.1 sq.ft.lb
LRC	: 8.9	Duty cycle	: Cont.(S1)
Rated torque	: 530 ft.lb	Insulation class	: F
Locked rotor torque	: 250 %	Service factor	: 1.15
Breakdown torque	: 300 %	Temperature rise	: 105 K
Rated speed	: 2975 rpm	Design	: A

Locked rotor time : 14s (cold) 8s (hot)

Rev.	Changes Summary	Performed	Checked	Date
Performed by			Page 4 / 21	Revision
Checked by				
Date	13/04/2022			

TORQUE AND CURRENT VS SPEED CURVE



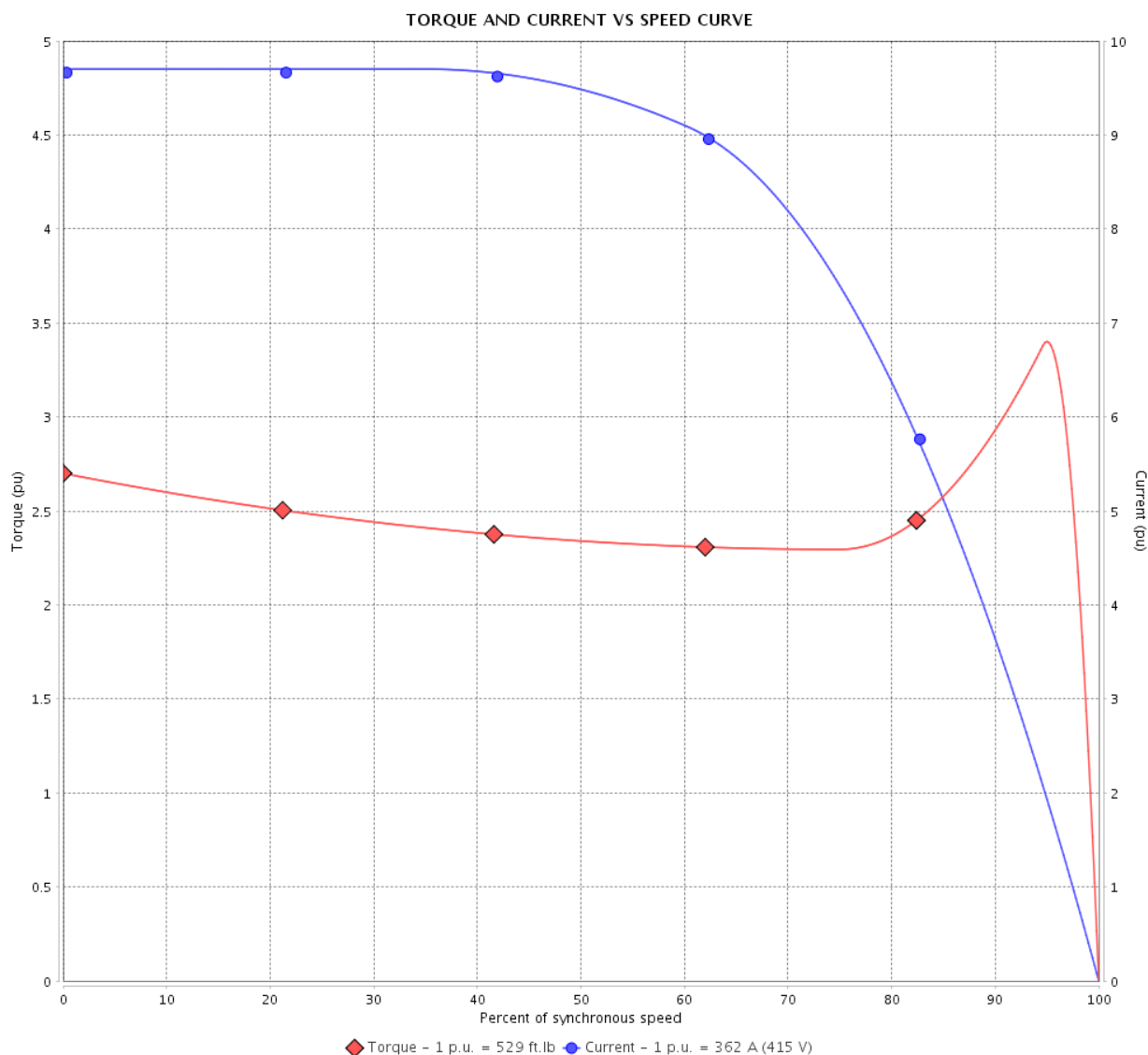
Three Phase Induction Motor - Squirrel Cage

Customer :

Product line : NEMA Premium Efficiency Three-Phase

Product code : 14439979

Catalog # : 35036ET3G449TS-W22



Performance : 415 V 50 Hz 2P IE3

Rated current	: 362 A	Moment of inertia (J)	: 68.1 sq.ft.lb
LRC	: 9.7	Duty cycle	: Cont.(S1)
Rated torque	: 529 ft.lb	Insulation class	: F
Locked rotor torque	: 270 %	Service factor	: 1.15
Breakdown torque	: 340 %	Temperature rise	: 105 K
Rated speed	: 2978 rpm	Design	: A

Locked rotor time : 14s (cold) 8s (hot)

Rev.	Changes Summary	Performed	Checked	Date
Performed by			Page 5 / 21	Revision
Checked by				
Date	13/04/2022			

LOAD PERFORMANCE CURVE

Three Phase Induction Motor - Squirrel Cage

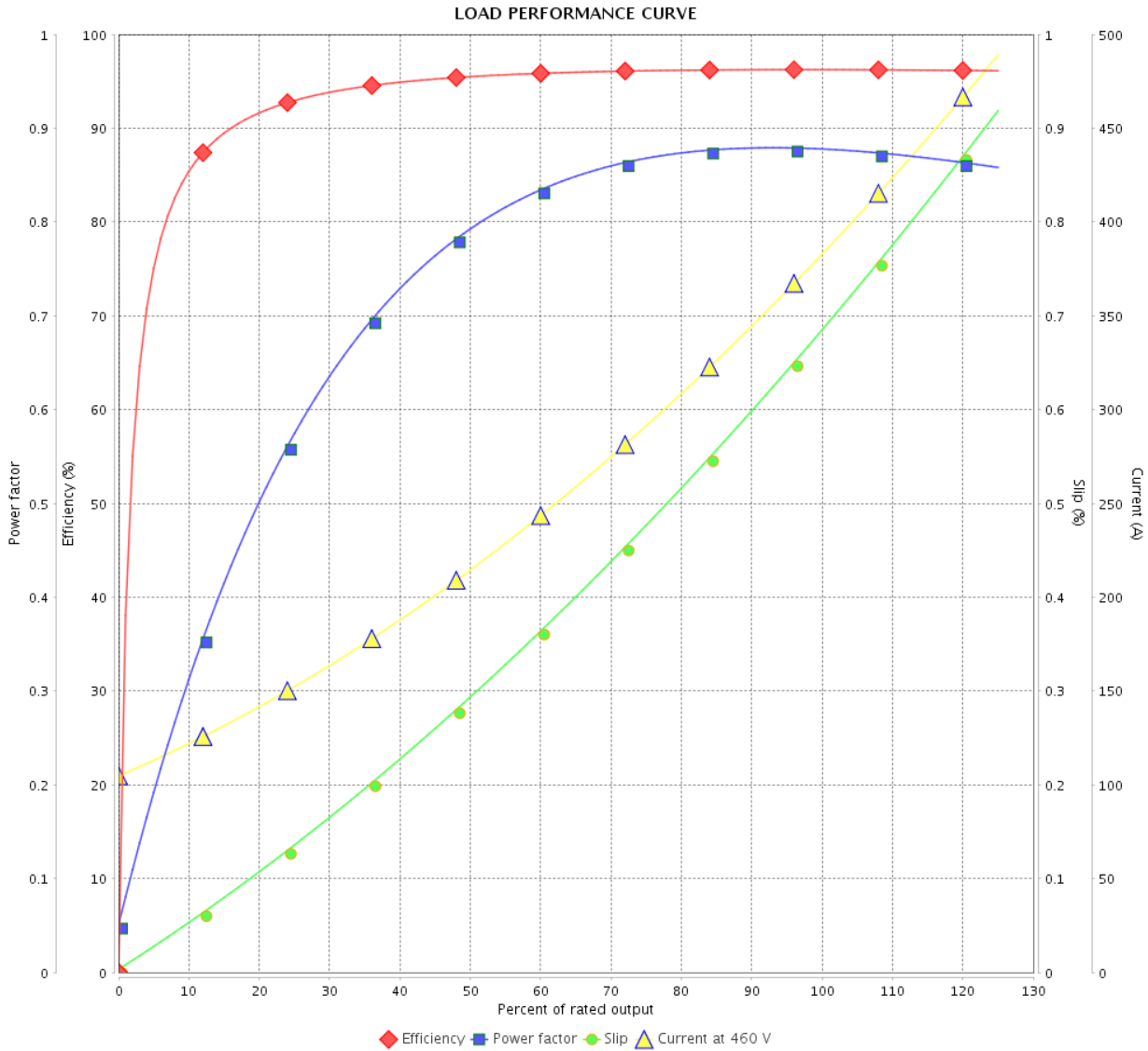


Customer : _____

Product line : NEMA Premium Efficiency Three-Phase

Product code : 14439979

Catalog # : 35036ET3G449TS-W22



Performance : 460 V 60 Hz 2P

Rated current	: 385 A	Moment of inertia (J)	: 68.1 sq.ft.lb
LRC	: 8.5	Duty cycle	: Cont.(S1)
Rated torque	: 514 ft.lb	Insulation class	: F
Locked rotor torque	: 240 %	Service factor	: 1.15
Breakdown torque	: 250 %	Temperature rise	: 80 K
Rated speed	: 3575 rpm	Design	: A

Rev.	Changes Summary	Performed	Checked	Date
Performed by			Page 6 / 21	Revision
Checked by				
Date	13/04/2022			

LOAD PERFORMANCE CURVE

Three Phase Induction Motor - Squirrel Cage

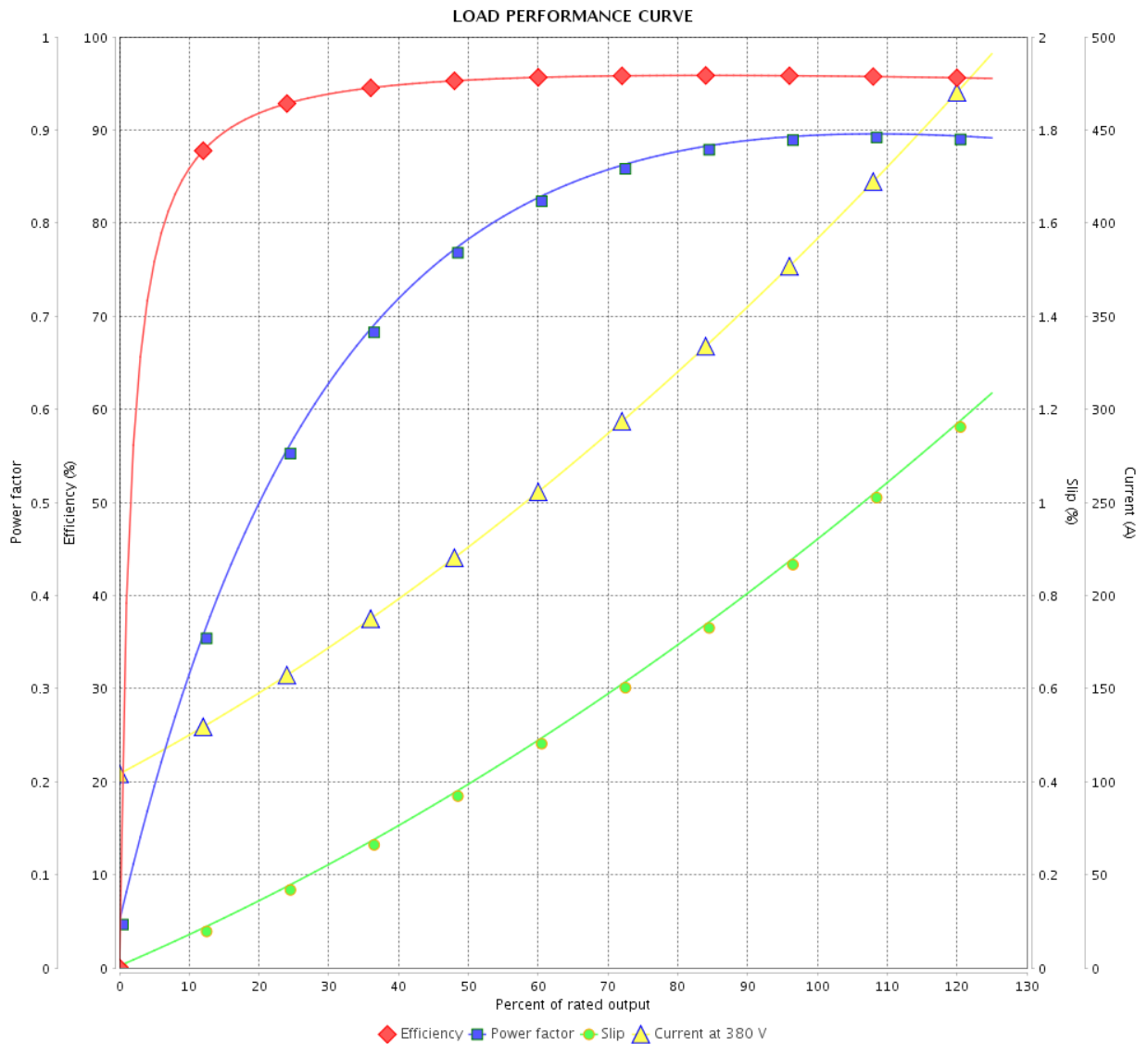


Customer :

Product line : NEMA Premium Efficiency Three-Phase

Product code : 14439979

Catalog # : 35036ET3G449TS-W22



Performance : 380 V 50 Hz 2P IE3

Rated current : 388 A
 LRC : 7.8
 Rated torque : 530 ft.lb
 Locked rotor torque : 229 %
 Breakdown torque : 270 %
 Rated speed : 2972 rpm

Moment of inertia (J) : 68.1 sq.ft.lb
 Duty cycle : Cont.(S1)
 Insulation class : F
 Service factor : 1.15
 Temperature rise : 105 K
 Design : A

Rev.	Changes Summary	Performed	Checked	Date
Performed by				
Checked by				
Date				
		Page	Revision	
		7 / 21		

LOAD PERFORMANCE CURVE

Three Phase Induction Motor - Squirrel Cage

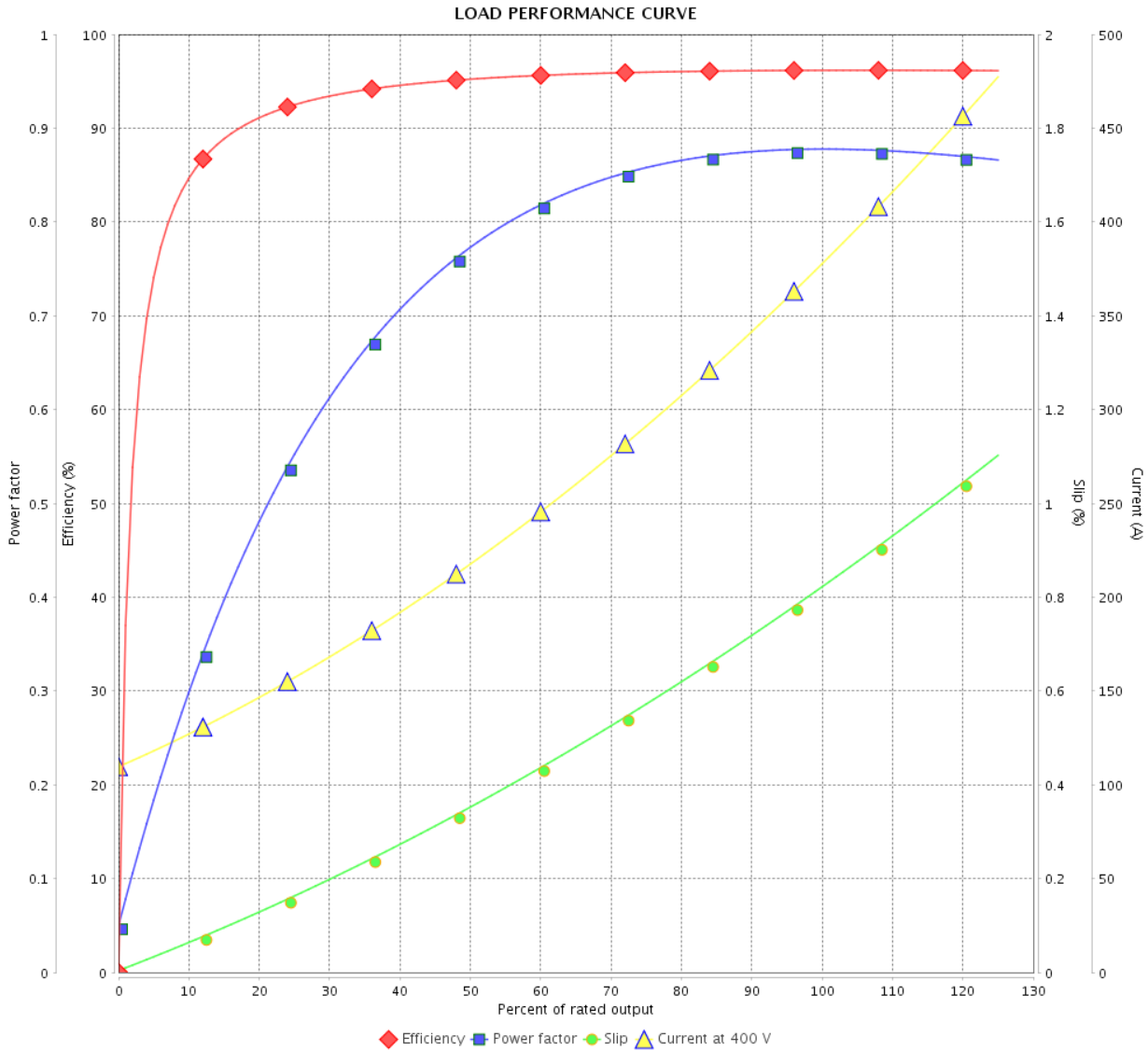


Customer :

Product line : NEMA Premium Efficiency Three-Phase

Product code : 14439979

Catalog # : 35036ET3G449TS-W22



Performance : 400 V 50 Hz 2P IE3

Rated current : 375 A
 LRC : 8.9
 Rated torque : 530 ft.lb
 Locked rotor torque : 250 %
 Breakdown torque : 300 %
 Rated speed : 2975 rpm

Moment of inertia (J) : 68.1 sq.ft.lb
 Duty cycle : Cont.(S1)
 Insulation class : F
 Service factor : 1.15
 Temperature rise : 105 K
 Design : A

Rev.	Changes Summary	Performed	Checked	Date
Performed by			Page	Revision
Checked by			8 / 21	
Date	13/04/2022			

LOAD PERFORMANCE CURVE

Three Phase Induction Motor - Squirrel Cage

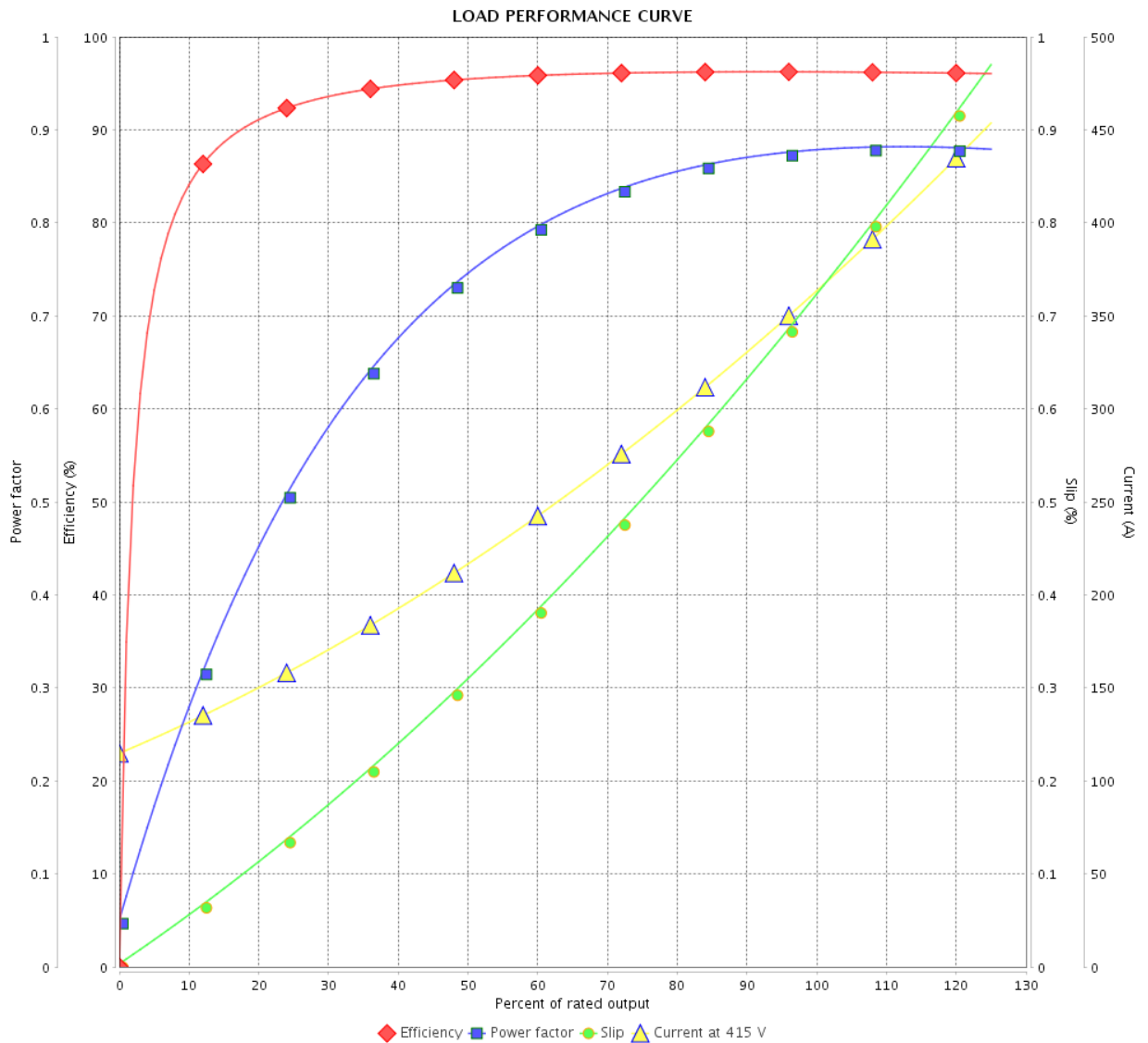


Customer : _____

Product line : NEMA Premium Efficiency Three-Phase

Product code : 14439979

Catalog # : 35036ET3G449TS-W22



Performance : 415 V 50 Hz 2P IE3

Rated current : 362 A
 LRC : 9.7
 Rated torque : 529 ft.lb
 Locked rotor torque : 270 %
 Breakdown torque : 340 %
 Rated speed : 2978 rpm

Moment of inertia (J) : 68.1 sq.ft.lb
 Duty cycle : Cont.(S1)
 Insulation class : F
 Service factor : 1.15
 Temperature rise : 105 K
 Design : A

Rev.	Changes Summary	Performed	Checked	Date
Performed by		Page		Revision
Checked by		9 / 21		
Date		13/04/2022		

THERMAL LIMIT CURVE

Three Phase Induction Motor - Squirrel Cage



Customer :

Product line : NEMA Premium Efficiency Three-Phase

Product code : 14439979

Catalog # : 35036ET3G449TS-W22

Performance : 460 V 60 Hz 2P

Rated current	: 385 A	Moment of inertia (J)	: 68.1 sq.ft.lb
LRC	: 8.5	Duty cycle	: Cont.(S1)
Rated torque	: 514 ft.lb	Insulation class	: F
Locked rotor torque	: 240 %	Service factor	: 1.15
Breakdown torque	: 250 %	Temperature rise	: 80 K
Rated speed	: 3575 rpm	Design	: A

Heating constant

Cooling constant

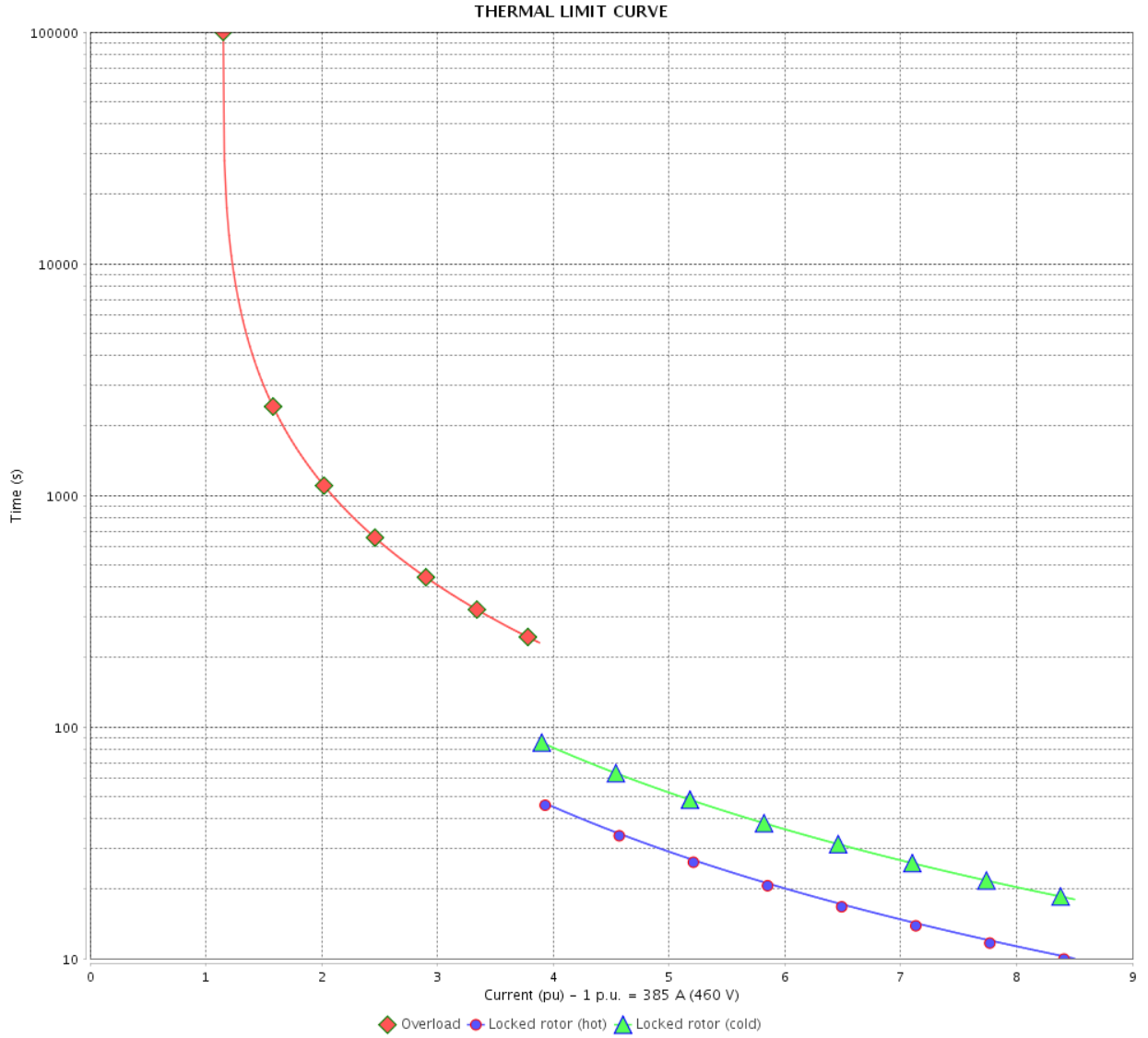
Rev.	Changes Summary	Performed	Checked	Date
Performed by				
Checked by			Page	Revision
Date	13/04/2022		10 / 21	

THERMAL LIMIT CURVE

Three Phase Induction Motor - Squirrel Cage



Customer : _____



Rev.	Changes Summary	Performed	Checked	Date
Performed by		Page		Revision
Checked by		11 / 21		
Date		13/04/2022		

THERMAL LIMIT CURVE

Three Phase Induction Motor - Squirrel Cage



Customer :

Product line : NEMA Premium Efficiency Three-Phase

Product code : 14439979

Catalog # : 35036ET3G449TS-W22

Performance : 380 V 50 Hz 2P IE3

Rated current	: 388 A	Moment of inertia (J)	: 68.1 sq.ft.lb
LRC	: 7.8	Duty cycle	: Cont.(S1)
Rated torque	: 530 ft.lb	Insulation class	: F
Locked rotor torque	: 229 %	Service factor	: 1.15
Breakdown torque	: 270 %	Temperature rise	: 105 K
Rated speed	: 2972 rpm	Design	: A

Heating constant

Cooling constant

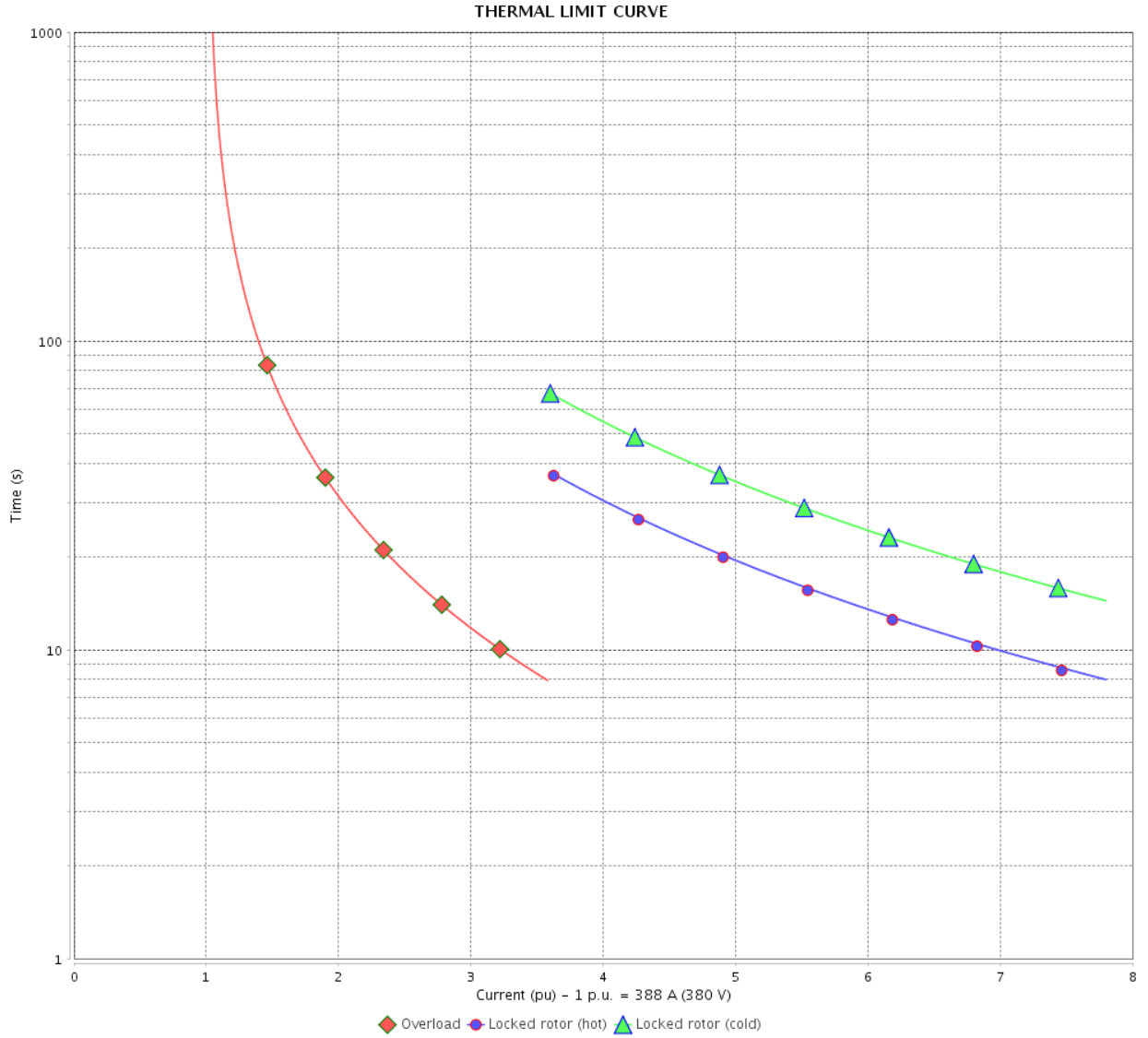
Rev.	Changes Summary	Performed	Checked	Date
Performed by				
Checked by			Page	Revision
Date	13/04/2022		12 / 21	

THERMAL LIMIT CURVE

Three Phase Induction Motor - Squirrel Cage



Customer : _____



Rev.	Changes Summary	Performed	Checked	Date
Performed by		Page		Revision
Checked by		13 / 21		
Date		13/04/2022		

THERMAL LIMIT CURVE



Three Phase Induction Motor - Squirrel Cage

Customer :

Product line : NEMA Premium Efficiency Three-Phase
 Product code : 14439979
 Catalog # : 35036ET3G449TS-W22

Performance : 400 V 50 Hz 2P IE3

Rated current : 375 A	Moment of inertia (J) : 68.1 sq.ft.lb
LRC : 8.9	Duty cycle : Cont.(S1)
Rated torque : 530 ft.lb	Insulation class : F
Locked rotor torque : 250 %	Service factor : 1.15
Breakdown torque : 300 %	Temperature rise : 105 K
Rated speed : 2975 rpm	Design : A

Heating constant

Cooling constant

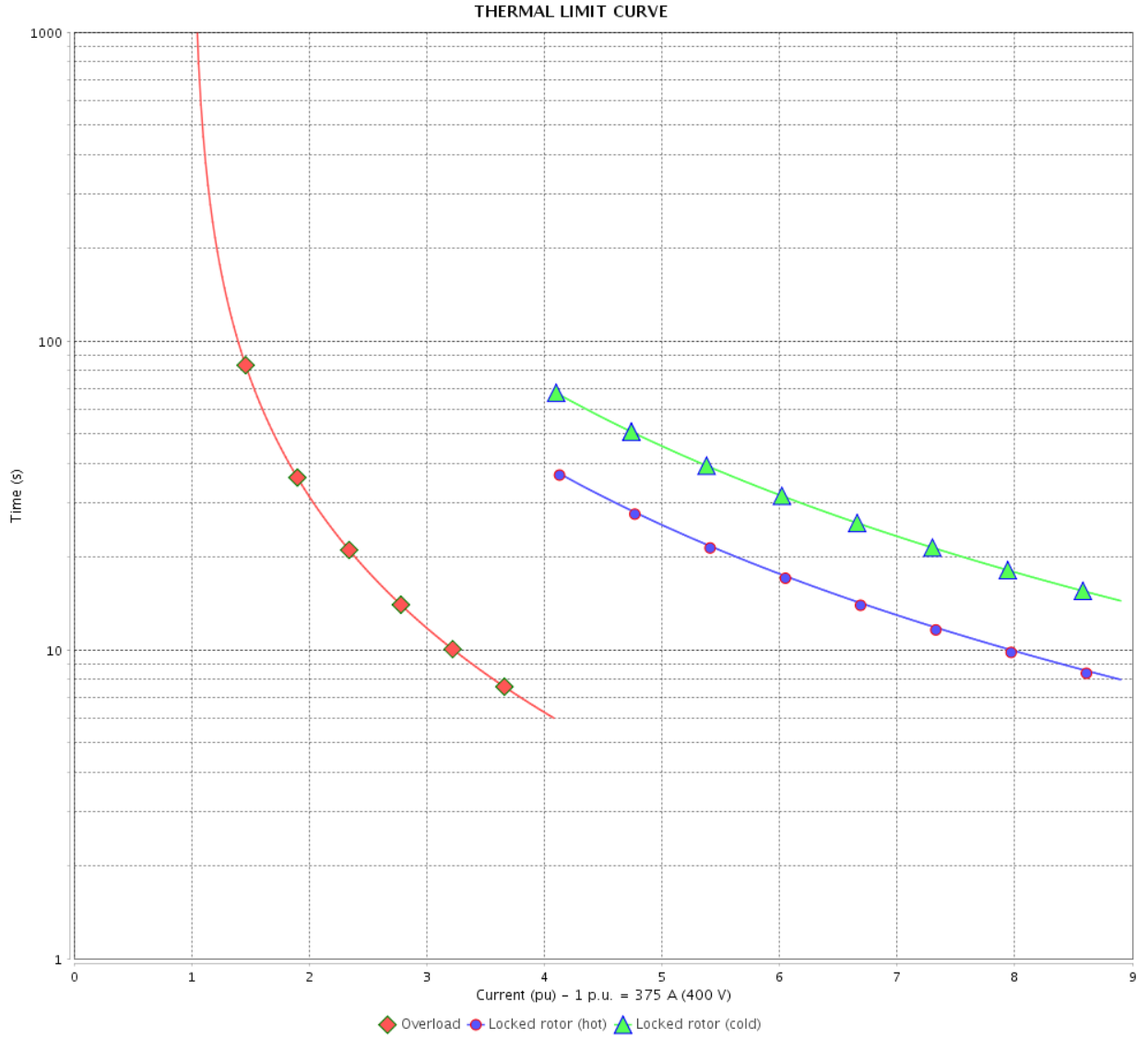
Rev.	Changes Summary	Performed	Checked	Date
Performed by			Page 14 / 21	Revision
Checked by				
Date	13/04/2022			

THERMAL LIMIT CURVE

Three Phase Induction Motor - Squirrel Cage



Customer : _____



Rev.	Changes Summary	Performed	Checked	Date
Performed by		Page		Revision
Checked by		15 / 21		
Date		13/04/2022		

THERMAL LIMIT CURVE

Three Phase Induction Motor - Squirrel Cage



Customer :

Product line : NEMA Premium Efficiency Three-Phase
Product code : 14439979
Catalog # : 35036ET3G449TS-W22

Performance : 415 V 50 Hz 2P IE3

Rated current	: 362 A	Moment of inertia (J)	: 68.1 sq.ft.lb
LRC	: 9.7	Duty cycle	: Cont.(S1)
Rated torque	: 529 ft.lb	Insulation class	: F
Locked rotor torque	: 270 %	Service factor	: 1.15
Breakdown torque	: 340 %	Temperature rise	: 105 K
Rated speed	: 2978 rpm	Design	: A

Heating constant

Cooling constant

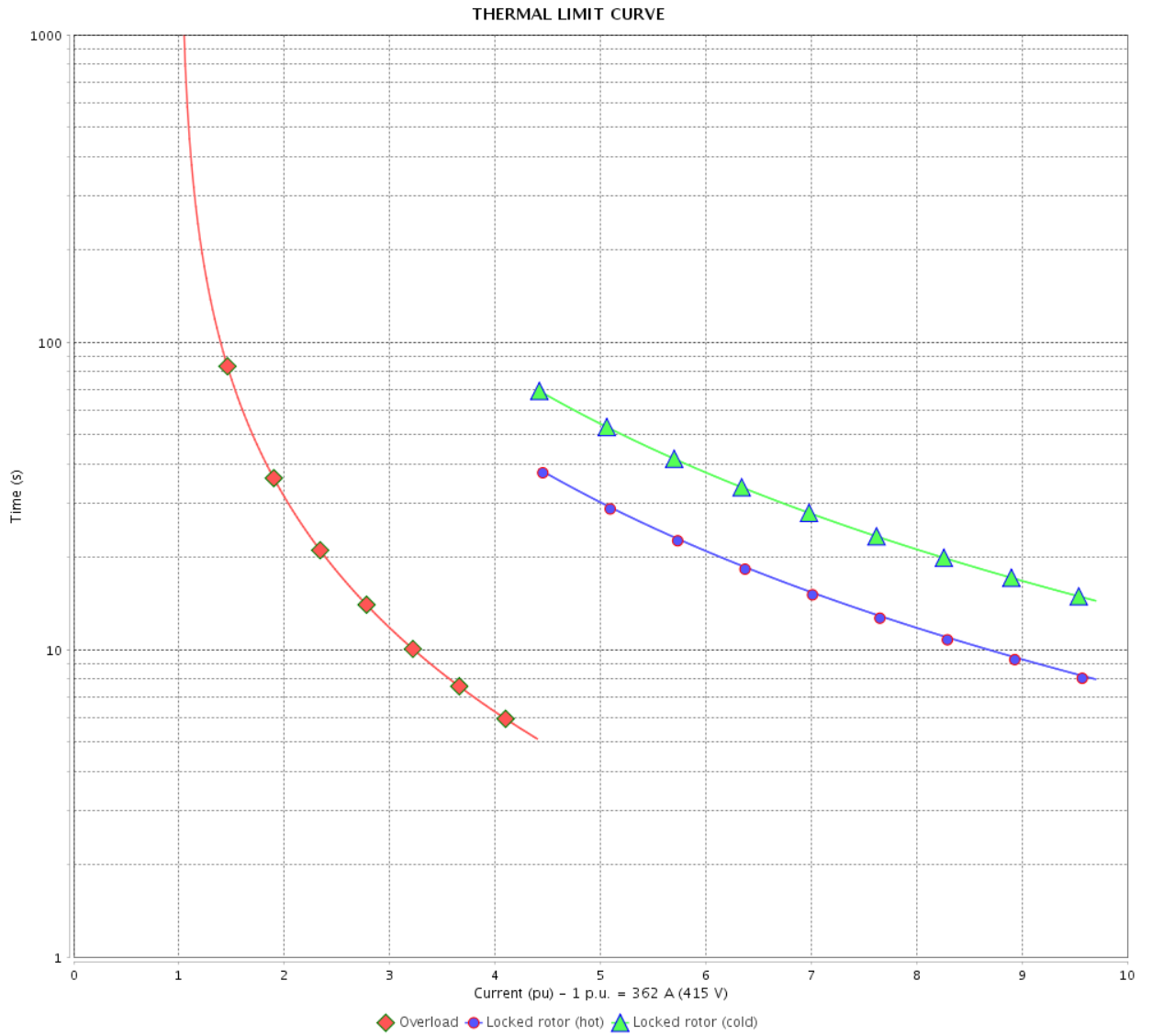
Rev.	Changes Summary	Performed	Checked	Date
Performed by				
Checked by			Page	Revision
Date	13/04/2022		16 / 21	

THERMAL LIMIT CURVE

Three Phase Induction Motor - Squirrel Cage



Customer : _____



Rev.	Changes Summary	Performed	Checked	Date
Performed by		Page 17 / 21		Revision
Checked by				
Date				

VFD OPERATION CURVE

Three Phase Induction Motor - Squirrel Cage



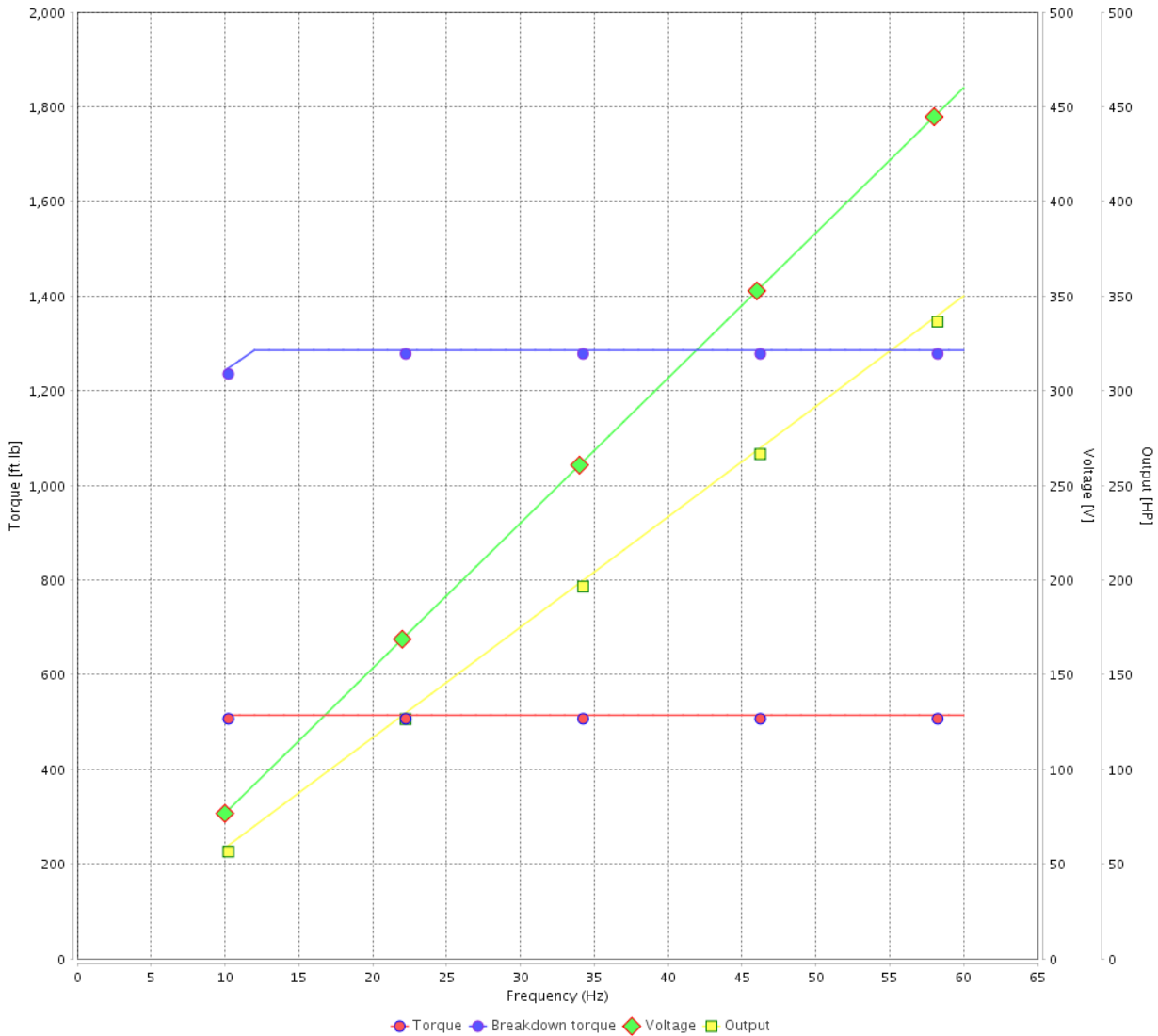
Customer :

Product line : NEMA Premium Efficiency Three-Phase

Product code : 14439979

Catalog # : 35036ET3G449TS-W22

VFD OPERATION CURVE



Performance : 460 V 60 Hz 2P

Rated current	: 385 A	Moment of inertia (J)	: 68.1 sq.ft.lb
LRC	: 8.5	Duty cycle	: Cont.(S1)
Rated torque	: 514 ft.lb	Insulation class	: F
Locked rotor torque	: 240 %	Service factor	: 1.15
Breakdown torque	: 250 %	Temperature rise	: 80 K
Rated speed	: 3575 rpm	Design	: A

Rev.	Changes Summary	Performed	Checked	Date
Performed by			Page 18 / 21	Revision
Checked by				
Date	13/04/2022			

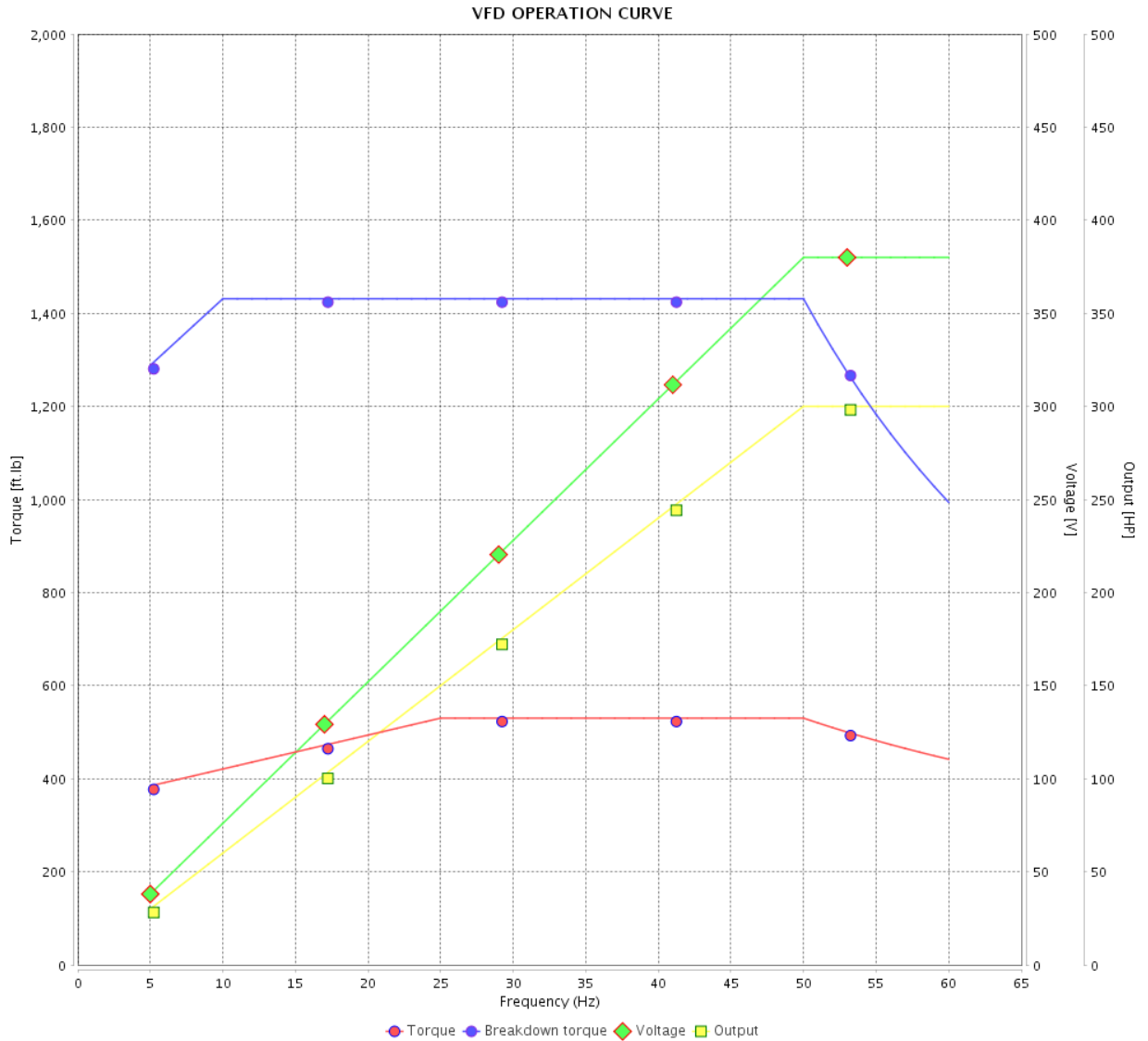
VFD OPERATION CURVE

Three Phase Induction Motor - Squirrel Cage



Customer :

Product line : NEMA Premium Efficiency Three-Phase
 Product code : 14439979
 Catalog # : 35036ET3G449TS-W22



Performance : 380 V 50 Hz 2P IE3

Rated current : 388 A	Moment of inertia (J) : 68.1 sq.ft.lb
LRC : 7.8	Duty cycle : Cont.(S1)
Rated torque : 530 ft.lb	Insulation class : F
Locked rotor torque : 229 %	Service factor : 1.15
Breakdown torque : 270 %	Temperature rise : 105 K
Rated speed : 2972 rpm	Design : A

Rev.	Changes Summary	Performed	Checked	Date
Performed by			Page	Revision
Checked by			19 / 21	
Date	13/04/2022			

VFD OPERATION CURVE

Three Phase Induction Motor - Squirrel Cage



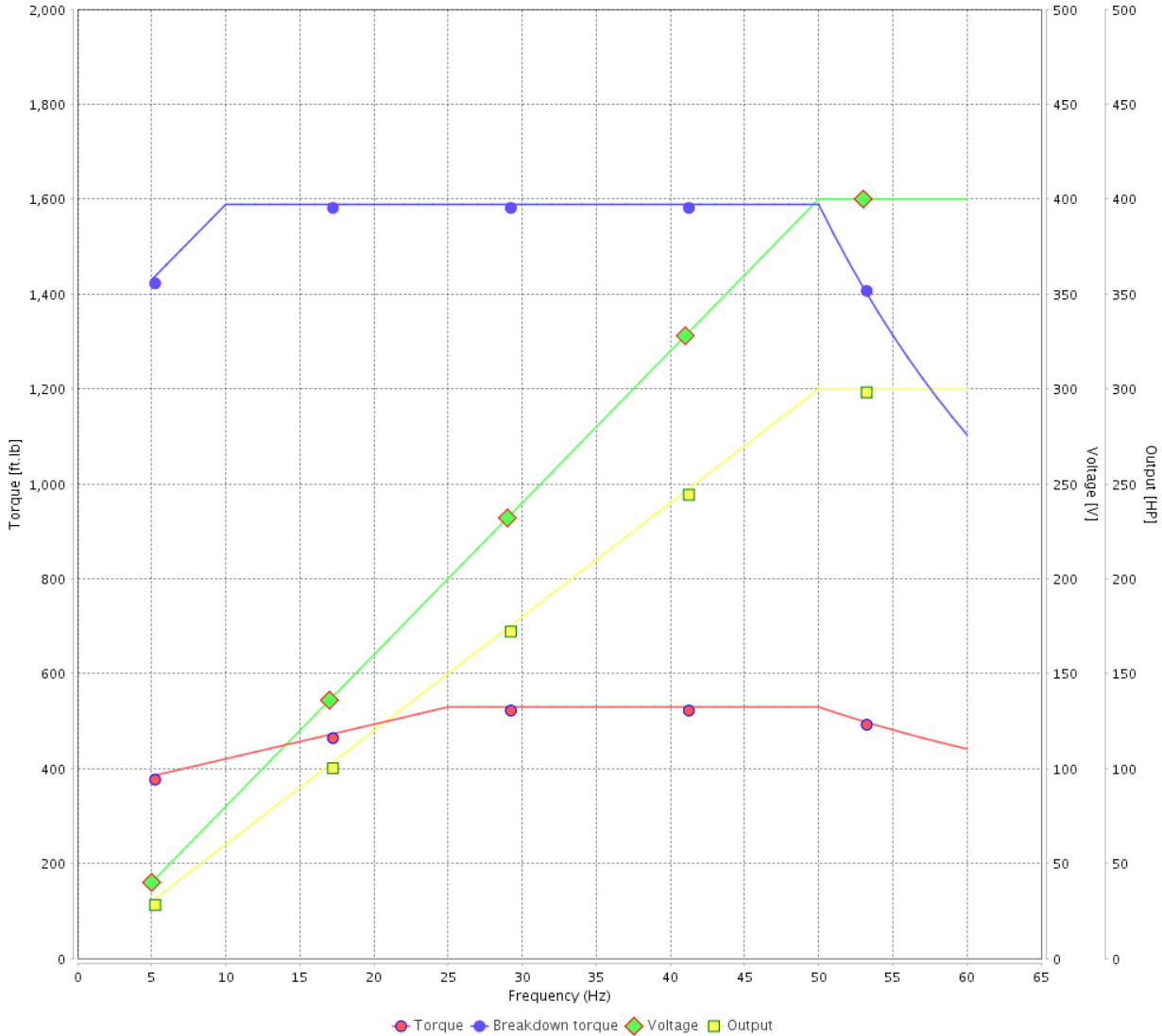
Customer :

Product line : NEMA Premium Efficiency Three-Phase

Product code : 14439979

Catalog # : 35036ET3G449TS-W22

VFD OPERATION CURVE



Performance : 400 V 50 Hz 2P IE3

Rated current : 375 A
 LRC : 8.9
 Rated torque : 530 ft.lb
 Locked rotor torque : 250 %
 Breakdown torque : 300 %
 Rated speed : 2975 rpm

Moment of inertia (J) : 68.1 sq.ft.lb
 Duty cycle : Cont.(S1)
 Insulation class : F
 Service factor : 1.15
 Temperature rise : 105 K
 Design : A

Rev.	Changes Summary	Performed	Checked	Date
Performed by			Page 20 / 21	Revision
Checked by				
Date	13/04/2022			

VFD OPERATION CURVE

Three Phase Induction Motor - Squirrel Cage

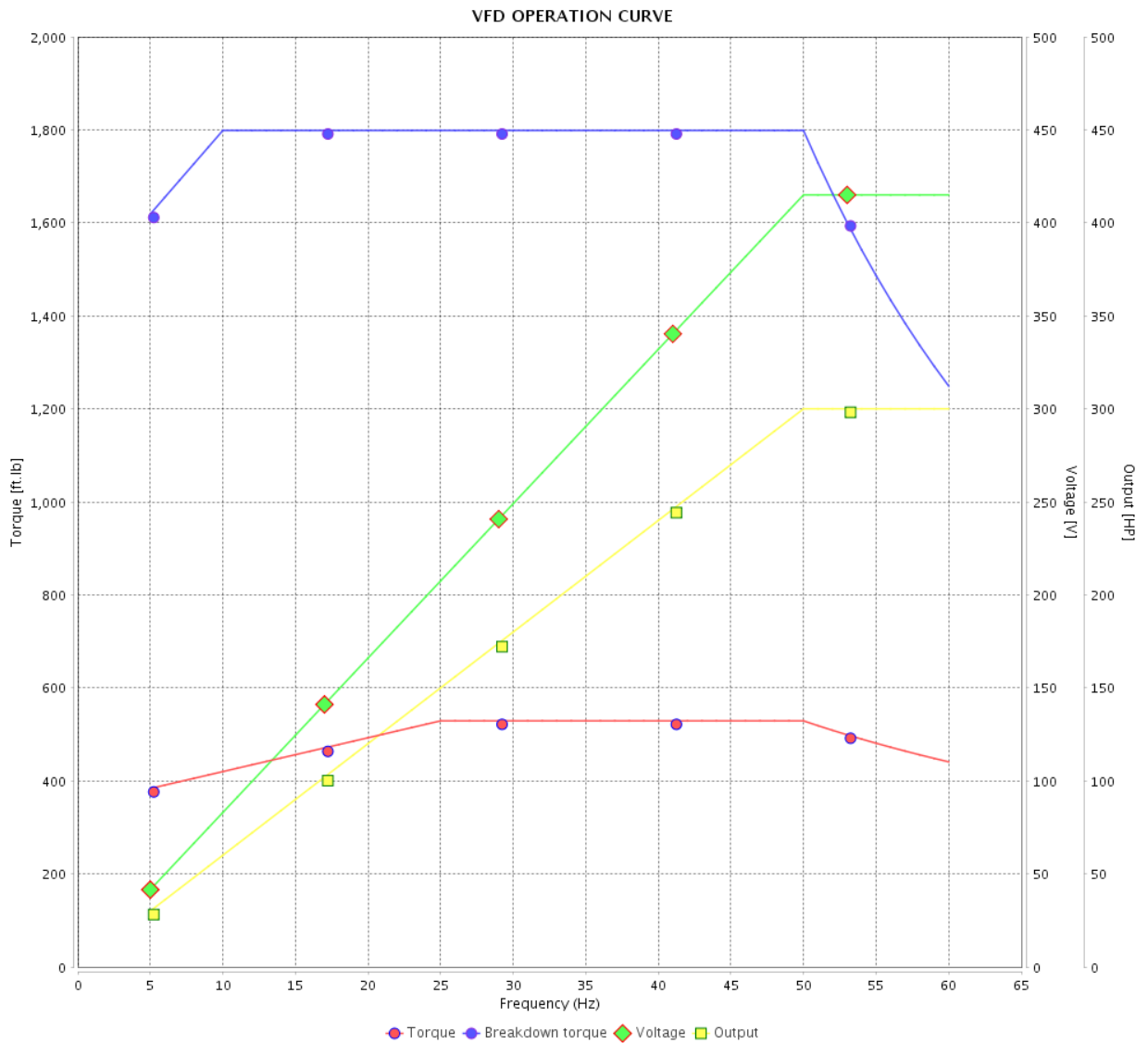


Customer :

Product line : NEMA Premium Efficiency Three-Phase

Product code : 14439979

Catalog # : 35036ET3G449TS-W22



Performance : 415 V 50 Hz 2P IE3

Rated current : 362 A
 LRC : 9.7
 Rated torque : 529 ft.lb
 Locked rotor torque : 270 %
 Breakdown torque : 340 %
 Rated speed : 2978 rpm

Moment of inertia (J) : 68.1 sq.ft.lb
 Duty cycle : Cont.(S1)
 Insulation class : F
 Service factor : 1.15
 Temperature rise : 105 K
 Design : A

Rev.	Changes Summary	Performed	Checked	Date
Performed by			Page 21 / 21	Revision
Checked by				
Date	13/04/2022			

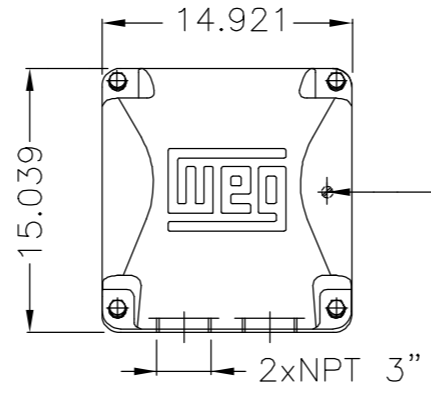
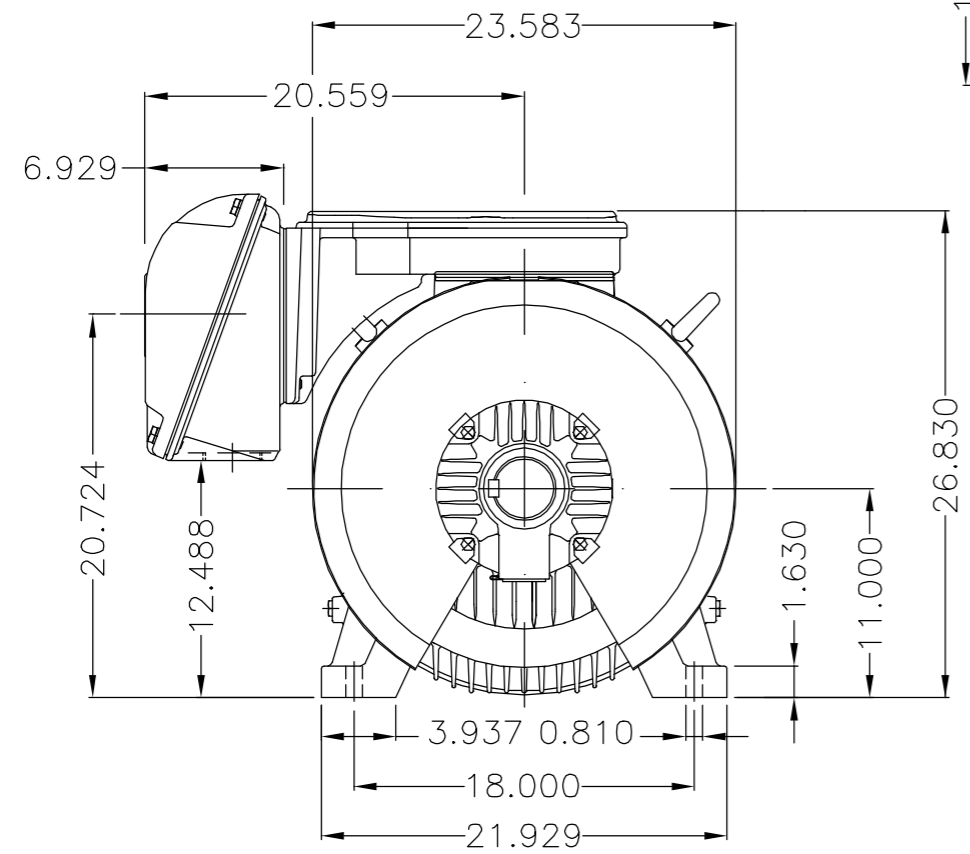
EJE/SHAFT	
ESTÁNDAR/STANDARD	X
OPCIONAL/OPTIONAL	
ESPECIAL/SPECIAL	

Dimensões em polegada
Dimensions in inches

PRELIMINARY DOCUMENT
Not to be used for installation purposes.

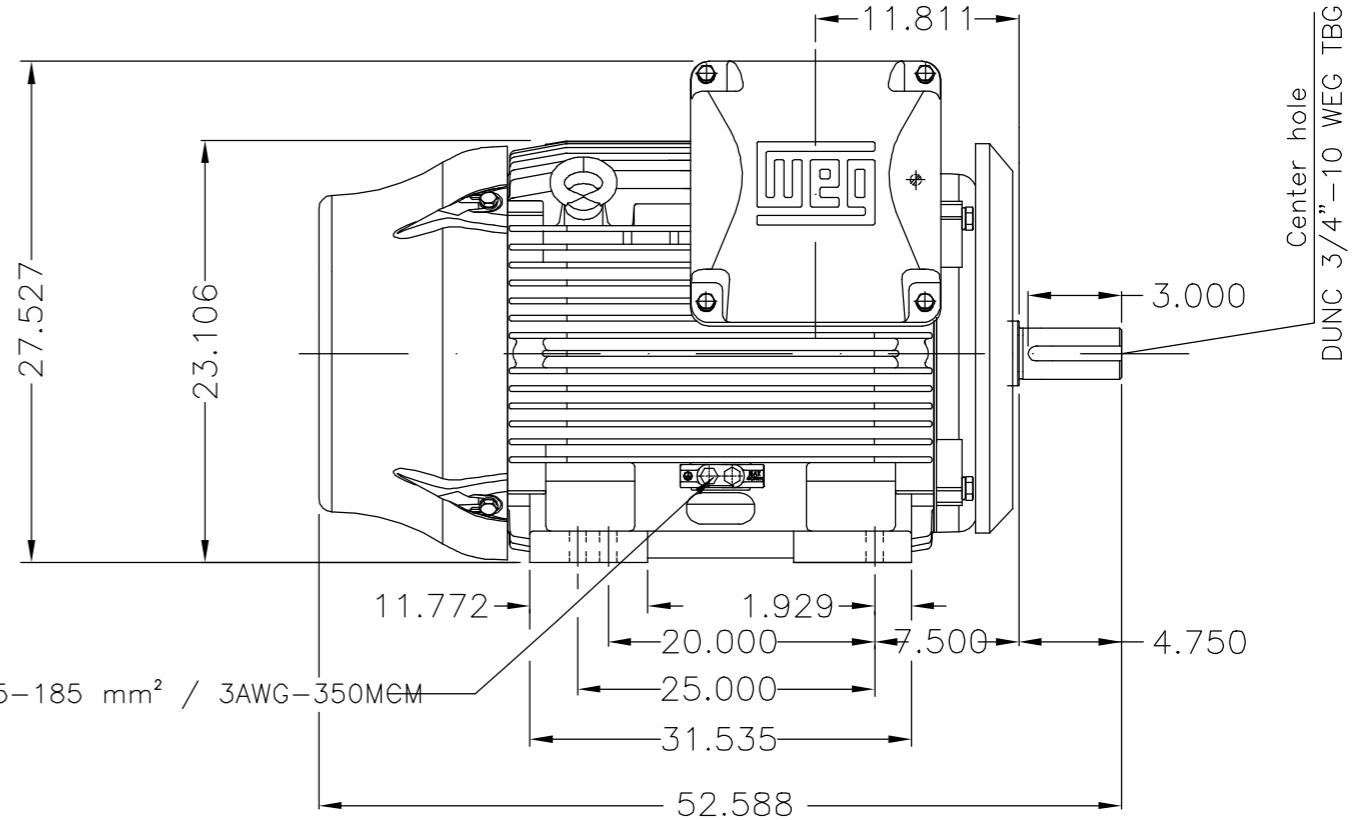
THIS IS AN UPDATED REVISION, THE PREVIOUS ONE MUST BE DISREGARDED.

A
B
C
D
E

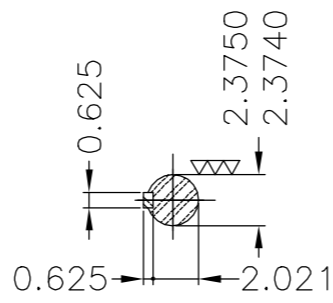


Main terminal box

Grounding for leads 35-70 mm² / 1-2/0 AWG



Grounding for leads 25-185 mm² / 3AWG-350MEM



DE Shaft End

Deflector de aire delantero / Drive-End Air Deflector
Color RAL 5009 / Color RAL 5009
Plan de pintura 203A / Painting plan 203A
Forma constructiva NEMA F-1 / Mounting NEMA F-1
Forma constructiva B3D / Mounting B3R(D)

WEG ELECTRIC CORPORATION - WEG

OV: 4846099

500001452675	DOCUMENTO NOVO	JOSE9	JUANL	JUANL	15.05.2018	00		
ECM	LOC	SUMMARY OF MODIFICATIONS		EXECUTED	CHECKED	RELEASED	DATE	VER
EXECUTED	JOSE9	THREE PHASE W22 MOTOR - NEMA PREMIUM EFF		10005758650				
CHECKED	JUANL	FRAME 447/9TS IP55 TEFC		000 00				
RELEASED	JUANL							
REL DT	15.05.2018	WMX	Huehuetoca	Product Engineering	SHEET 1 / 1			

350 HP 02 Poles 60Hz

A

UNCONTROLLED COPY
RELEASED
ZME A3

MADE IN BRAZIL
14439979



FOR SAFE AREA
Mod.TE1BFOXON
CC029A



Class I, Div 2, Gr A, B, C and D - T3
Class I, Zone 2, IIC - T3
Class II, Div 2, Gr F and G - T3C
For use on PWM: Gr. A, B, C, D and F,
VT 1000:1, CT 6:1, 1.00SF - T3

MODEL 35036ET3G449TS-W22

Inverter Duty Motor
Severe Duty

PH3 60Hz Fr. 447/9TS 1000m.a.s.l. IP55 TEFC 2991lb

V 460

A 385

HP 350

kW 260

SF 1.15

SFA 443

RPM 3575

PF 0.88

AMB 40°C

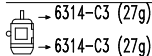
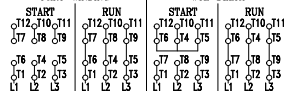
INS cl. F DT80K

NEMA NOM EFF 96.2%

DUTY CONT.

DES A Code J

PART-WINDING



MOBIL POLYREX EM (4000h)

