

DATA SHEET



Three Phase Induction Motor - Squirrel Cage

Customer :				
Product line	: NEMA Premium Efficiency Three-Phase			
Product code :	13500699			
Catalog # :	40012ET3GKD586/7-W22			
Frame : 586/7T Output : 400 HP (300 kW) Poles : 6 Frequency : 60 Hz Rated voltage : 460 V Rated current : 489 A L. R. Amperes : 3179 A LRC : 6.5x(Code H) No load current : 220 A Rated speed : 1193 rpm Slip : 0.58 % Rated torque : 1760 ft.lb Locked rotor torque : 220 % Breakdown torque : 250 % Insulation class : F Service factor : 1.15	Locked rotor time : 52s (cold) 29s (hot) Temperature rise : 80 K Duty cycle : Cont.(S1) Ambient temperature : -20°C to +40°C Altitude : 1000 m.a.s.l. Protection degree : IP55 Cooling method : IC411 - TEFC Mounting : F-1 Rotation ¹ : Both (CW and CCW) Noise level ² : 77.0 dB(A) Starting method : Direct On Line Approx. weight ³ : 4115 lb			
Output	25% 50% 75% 100%			
Efficiency (%)	0.000 95.4 95.8 96.2			
Power Factor	0.00 0.66 0.75 0.80			
Foundation loads	Max. traction : 7126 lb Max. compression : 11241 lb			
Bearing type	: <u>Drive end</u> NU-322 C3 <u>Non drive end</u> 6319 C3			
Sealing	: Taconite Labyrinth Taconite Labyrinth			
Lubrication interval	: 7000 h 13000 h			
Lubricant amount	: 60 g 45 g			
Lubricant type	: Mobil Polyrex EM			
Notes				
This revision replaces and cancel the previous one, which must be eliminated. (1) Looking the motor from the shaft end. (2) Measured at 1m and with tolerance of +3dB(A). (3) Approximate weight subject to changes after manufacturing process. (4) At 100% of full load.				
These are average values based on tests with sinusoidal power supply, subject to the tolerances stipulated in NEMA MG-1.				
Rev.	Changes Summary	Performed	Checked	Date
Performed by				
Checked by			Page	Revision
Date	13/04/2022		1 / 7	

DATA SHEET

Three Phase Induction Motor - Squirrel Cage



Customer : _____

Space heater information

Voltage: 200 - 240 V

Rev.	Changes Summary	Performed	Checked	Date
Performed by				
Checked by			Page	Revision
Date	13/04/2022		2 / 7	

TORQUE AND CURRENT VS SPEED CURVE



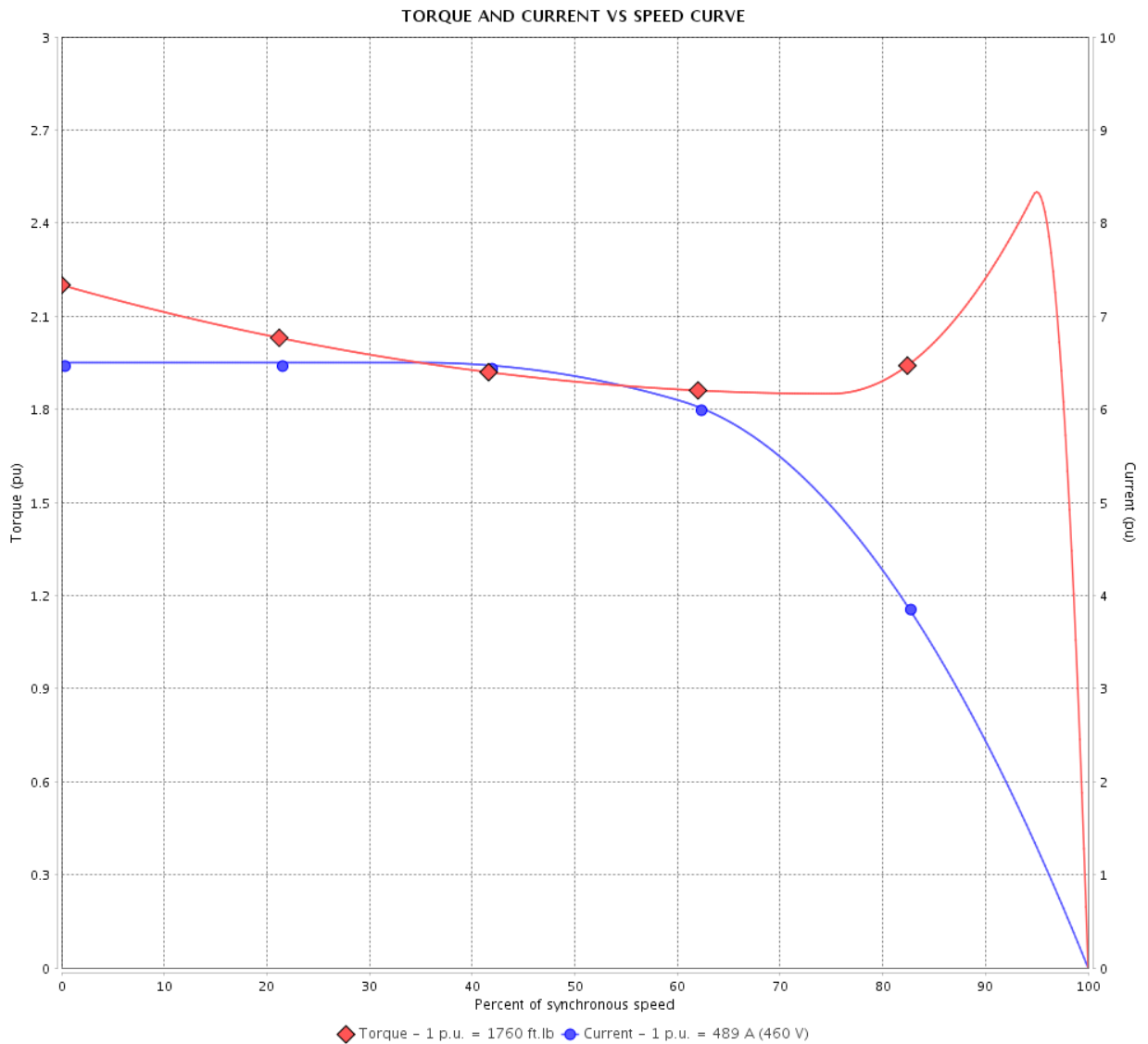
Three Phase Induction Motor - Squirrel Cage

Customer :

Product line : NEMA Premium Efficiency Three-Phase

Product code : 13500699

Catalog # : 40012ET3GKD586/7-W22



Performance : 460 V 60 Hz 6P

Rated current : 489 A
 LRC : 6.5
 Rated torque : 1760 ft.lb
 Locked rotor torque : 220 %
 Breakdown torque : 250 %
 Rated speed : 1193 rpm

Moment of inertia (J)
 Duty cycle : Cont.(S1)
 Insulation class : F
 Service factor : 1.15
 Temperature rise : 80 K

Locked rotor time : 52s (cold) 29s (hot)

Rev.	Changes Summary	Performed	Checked	Date
Performed by			Page 3 / 7	Revision
Checked by				
Date	13/04/2022			

LOAD PERFORMANCE CURVE

Three Phase Induction Motor - Squirrel Cage



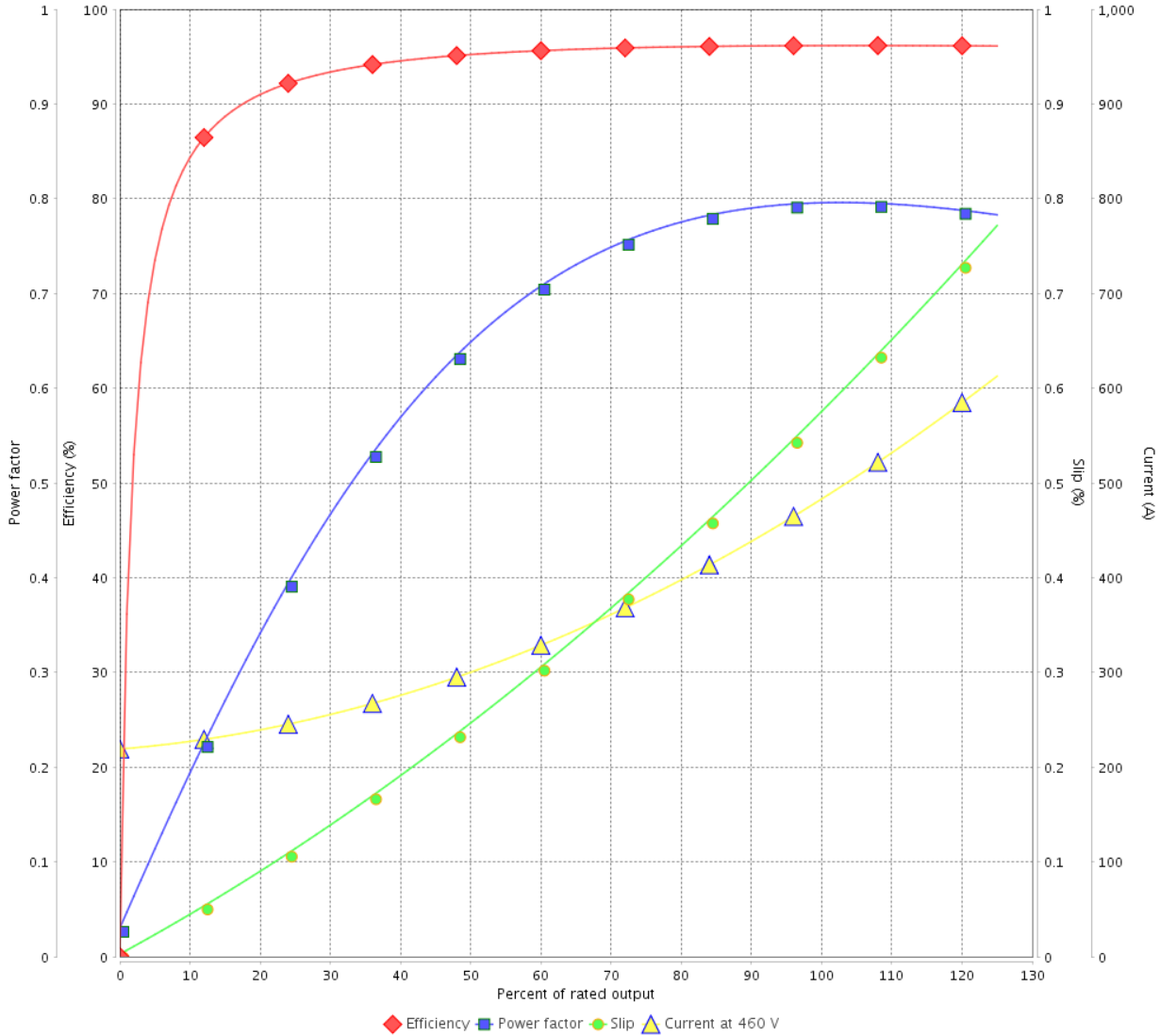
Customer :

Product line : NEMA Premium Efficiency Three-Phase

Product code : 13500699

Catalog # : 40012ET3GKD586/7-W22

LOAD PERFORMANCE CURVE



Performance : 460 V 60 Hz 6P

Rated current : 489 A
 LRC : 6.5
 Rated torque : 1760 ft.lb
 Locked rotor torque : 220 %
 Breakdown torque : 250 %
 Rated speed : 1193 rpm

Moment of inertia (J)
 Duty cycle : Cont.(S1)
 Insulation class : F
 Service factor : 1.15
 Temperature rise : 80 K

Rev.	Changes Summary	Performed	Checked	Date
Performed by			Page 4 / 7	Revision
Checked by				
Date	13/04/2022			

THERMAL LIMIT CURVE



Three Phase Induction Motor - Squirrel Cage

Customer :

Product line : NEMA Premium Efficiency Three-Phase
 Product code : 13500699
 Catalog # : 40012ET3GKD586/7-W22

Performance : 460 V 60 Hz 6P

Rated current : 489 A	Moment of inertia (J)
LRC : 6.5	Duty cycle : Cont.(S1)
Rated torque : 1760 ft.lb	Insulation class : F
Locked rotor torque : 220 %	Service factor : 1.15
Breakdown torque : 250 %	Temperature rise : 80 K
Rated speed : 1193 rpm	

Heating constant

Cooling constant

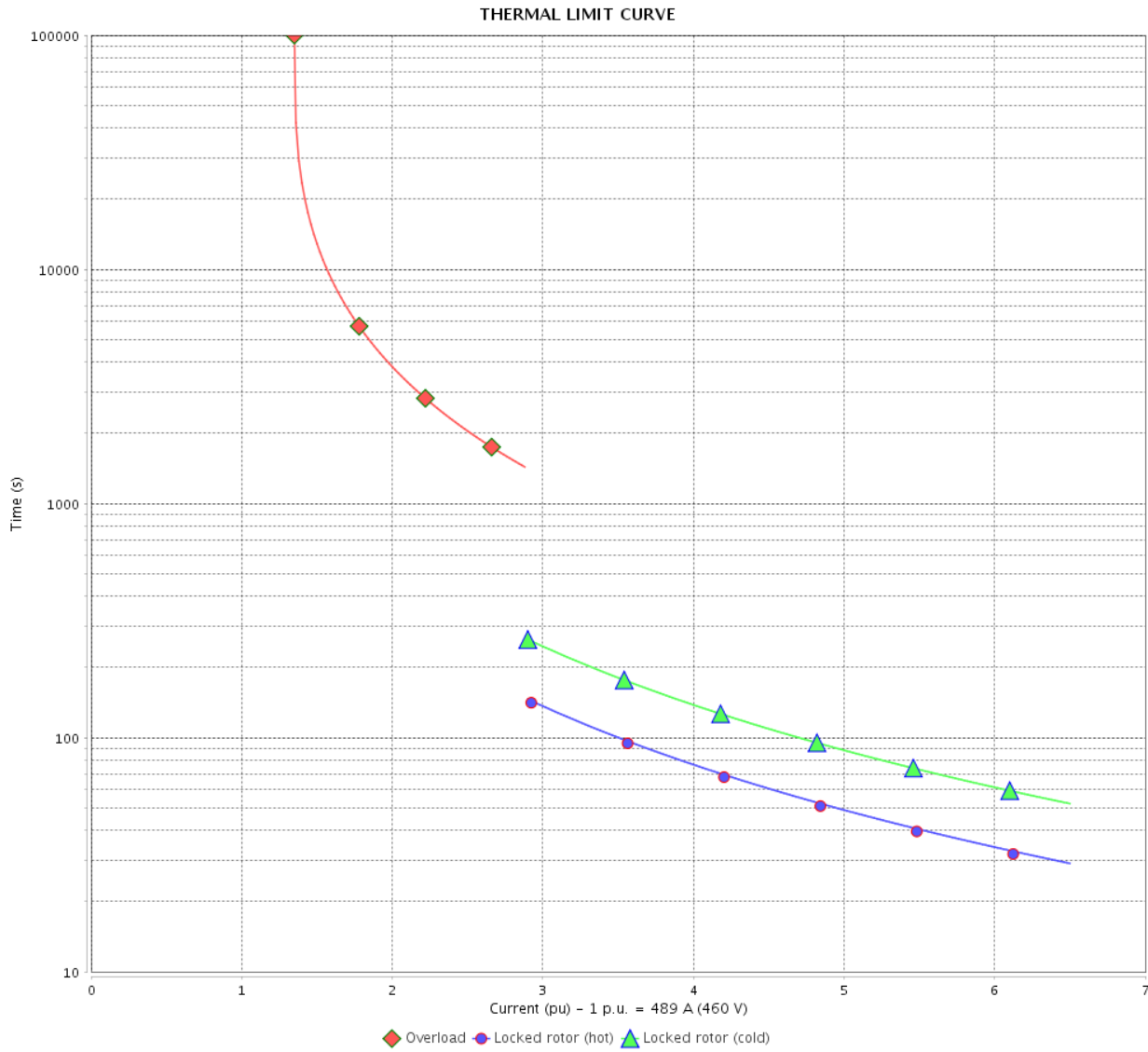
Rev.	Changes Summary	Performed	Checked	Date
Performed by				
Checked by			Page	Revision
Date	13/04/2022		5 / 7	

THERMAL LIMIT CURVE

Three Phase Induction Motor - Squirrel Cage



Customer : _____



Rev.	Changes Summary	Performed	Checked	Date
Performed by		Page 6 / 7		Revision
Checked by				
Date				

VFD OPERATION CURVE

Three Phase Induction Motor - Squirrel Cage

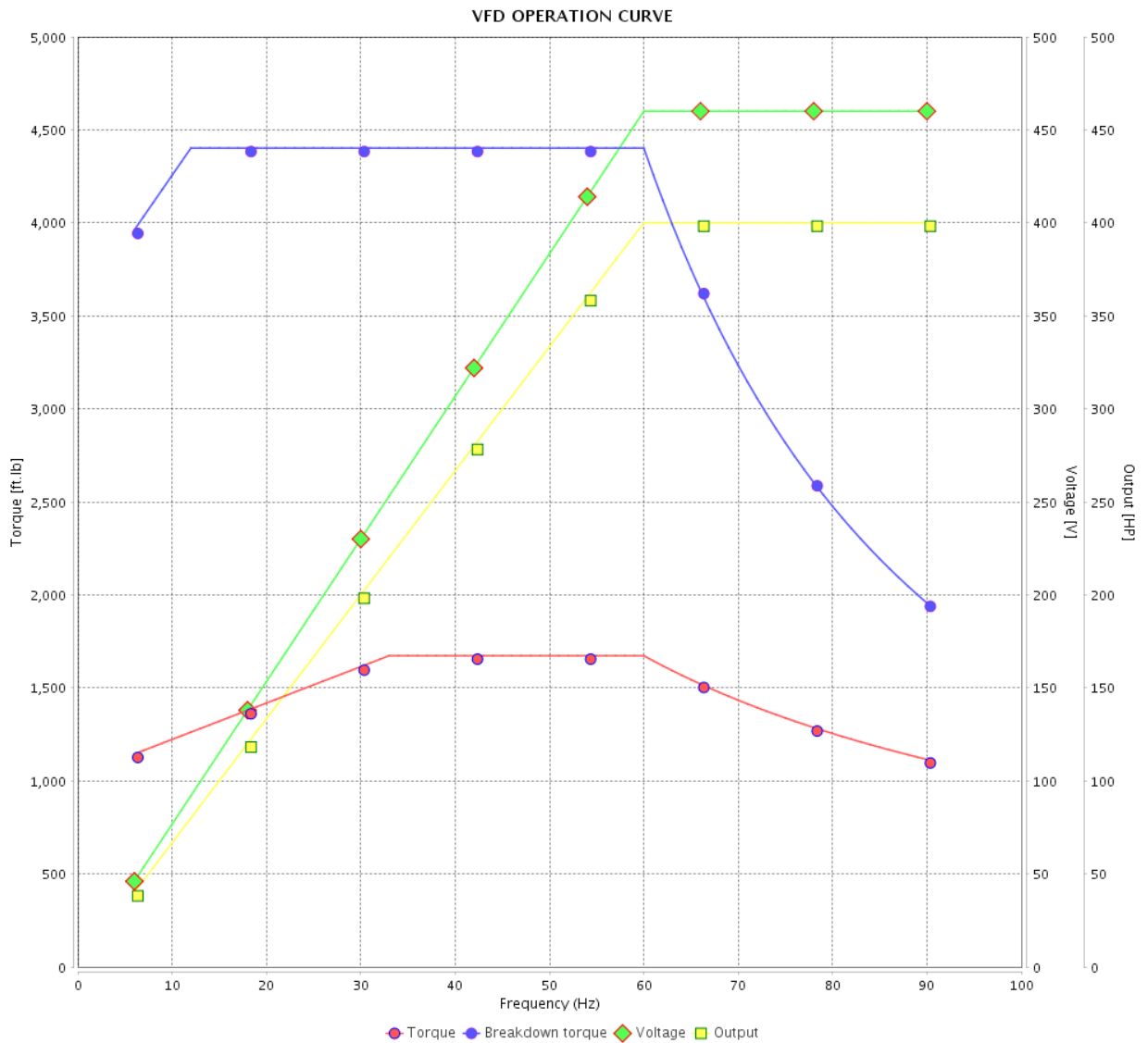


Customer :

Product line : NEMA Premium Efficiency Three-Phase

Product code : 13500699

Catalog # : 40012ET3GKD586/7-W22



Performance : 460 V 60 Hz 6P

Rated current : 489 A
 LRC : 6.5
 Rated torque : 1760 ft.lb
 Locked rotor torque : 220 %
 Breakdown torque : 250 %
 Rated speed : 1193 rpm

Moment of inertia (J)
 Duty cycle : Cont.(S1)
 Insulation class : F
 Service factor : 1.15
 Temperature rise : 80 K

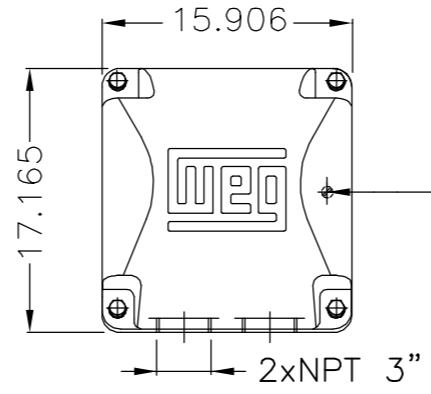
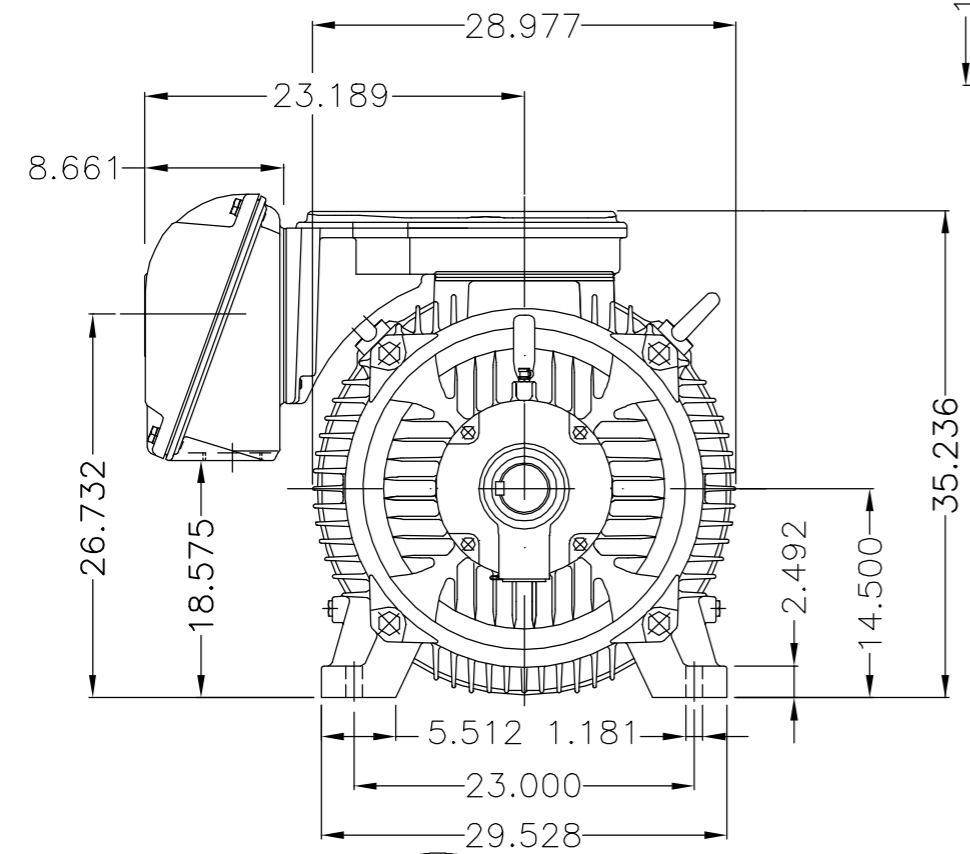
Rev.	Changes Summary	Performed	Checked	Date
Performed by		Page		Revision
Checked by		7 / 7		
Date		13/04/2022		

EIXO/SHAFT	
PADRÃO/STANDARD	X
OPCIONAL/OPTIONAL	
ESPECIAL/SPECIAL	

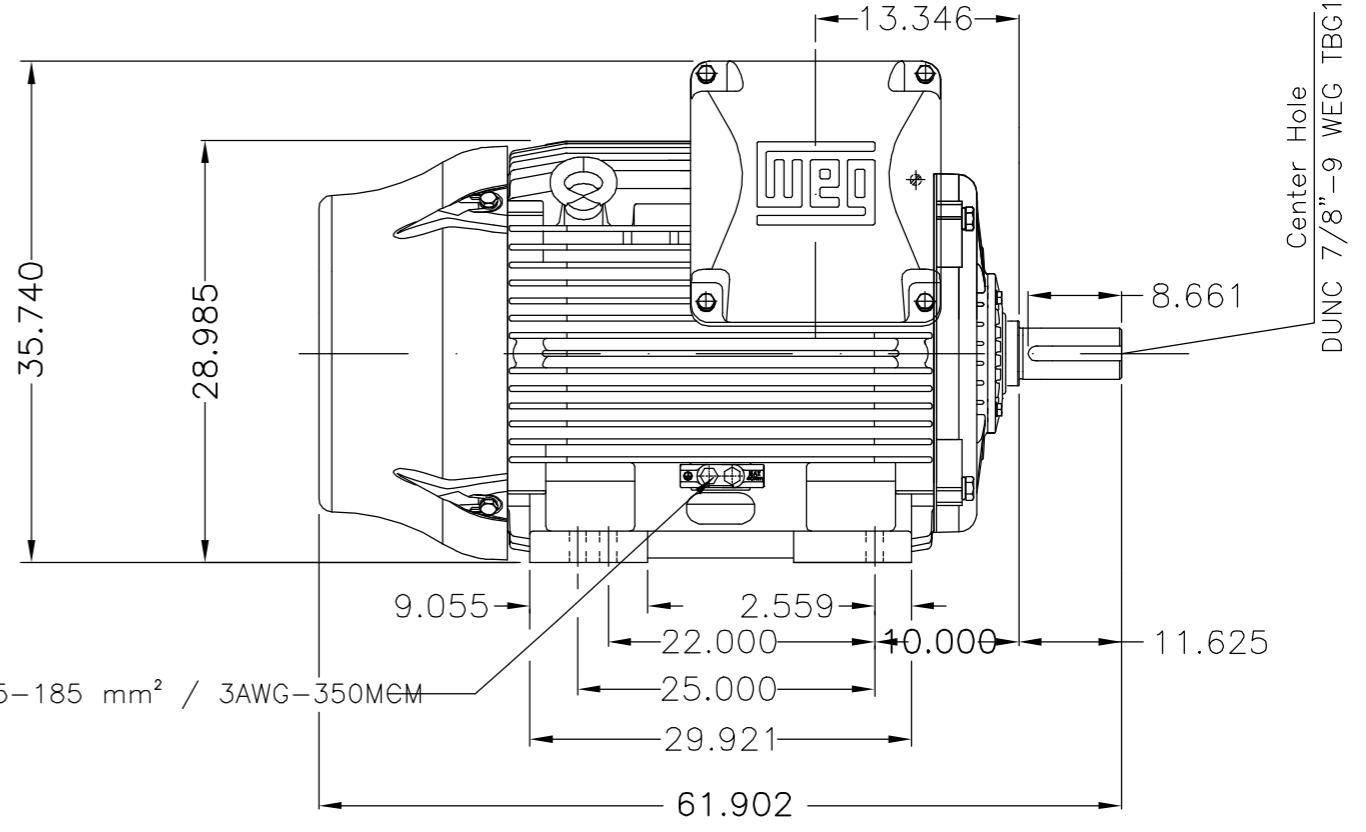
Dimensões em polegada
Dimensions in inches

THIS IS AN UPDATED REVISION, THE PREVIOUS ONE MUST BE DISREGARDED.

A
B
C
D
E

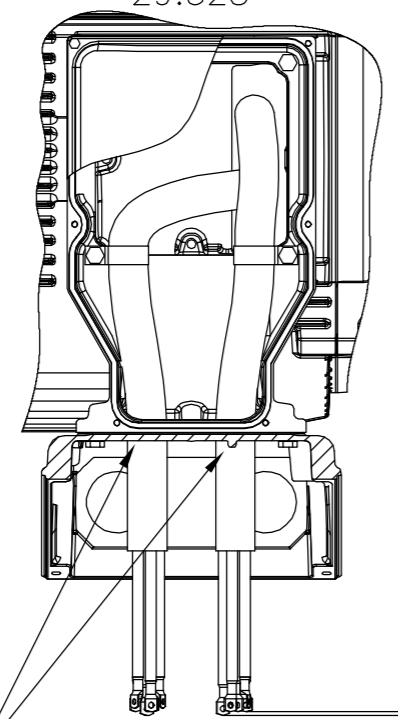


Main terminal box

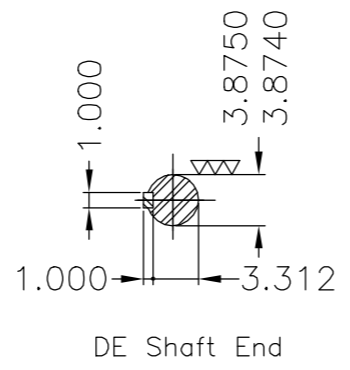


Grounding for leads 25-185 mm² / 3AWG-350MEM

Fixar o conduto no suporte com abraçadeiras.
Fasten the conduit on support with cables ties.



±5.900
(Desalinhamento máximo permitido)
(Maximum misalignment allowed)



DE Shaft End

Conduite para cabos no interior do suporte da caixa de ligação									
Cables conduit inside terminal box support									
Rolamento dianteiro de rolos / DE roller bearing									
Dispositivo de travamento de eixo / Shaft locking device									
Linha do motor: Crusher Duty / Motor purpose: Crusher Duty									
Tampa traseira com mancal eletricamente isolado									
NDE endshield with electrically insulated bearing hub									
Cor RAL 5009 / Color RAL 5009									
Plano de pintura 203A / Painting plan 203A									
Forma construtiva B3D / Mounting B3R(D)									
WEG EQUIPAMENTOS ELÉTRICOS S/A									

E	300 HP	08 Poles	60Hz	414658029
	250 HP	08 Poles	60Hz	414668751
	400 HP	06 Poles	60Hz	414658029
	350 HP	06 Poles	60Hz	414658029
	300 HP	06 Poles	60Hz	414658029

E	500001331189	ADIC.NOTA CONDUITE/ADD NOTE CONDUIT	MENSOR	EANJOS	05.07.2017	04
D	500001323616	ALTERADO CONFORME CDP 414658625	MENSOR	JMANENTE	20.06.2017	03
C	EXECUTED	GABRIELID	SUMMARY OF MODIFICATIONS			
B	CHECKED		THREE PHASE W22 MOTOR			
A	RELEASED	JMANENTE	FRAME 586/7T IP55 TEFC			
	REL DT	09.05.2017	WMO	Jaragua do Sul	Product Engineering	10004924169
						000 04
						SHEET 1 / 1





NEMA
Premium
W22



FOR SAFE AREA
Mod.TE1BFOXON



Class I, Div 2, Gr A, B, C and D - T3
Class I, Zone 2, IIC - T3
Class II, Div 2, Gr F and G - T3C
For use on PWM: Gr. A, B, C and D,
VT 1000:1, CT 6:1, 1.00SF - T2B

MODEL 40012ET3GKD586/7-W22

Inverter Duty Motor
Severe Duty

PH3 60Hz Fr. 586/7T 1000m.a.s.l. IP55 TEFC 4407lb

V 460

A 489

HP 400

kW 300

SF 1.15

SFA 562

RPM 1193

PF 0.80

AMB 40°C

INS cl. F DT80K

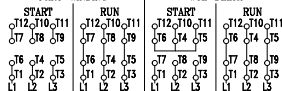
NEMA NOM EFF 96.2%

DUTY CONT.

DES - Code H

PART-WINDING

WYE-DELTA

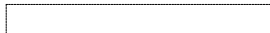


→ NU-322-C3 (60g)

→ 6319-C3 (45g)



MOBIL POLYREX EM (7000h)



MADE IN BRAZIL
13500699