

TORQUE AND CURRENT VS SPEED CURVE

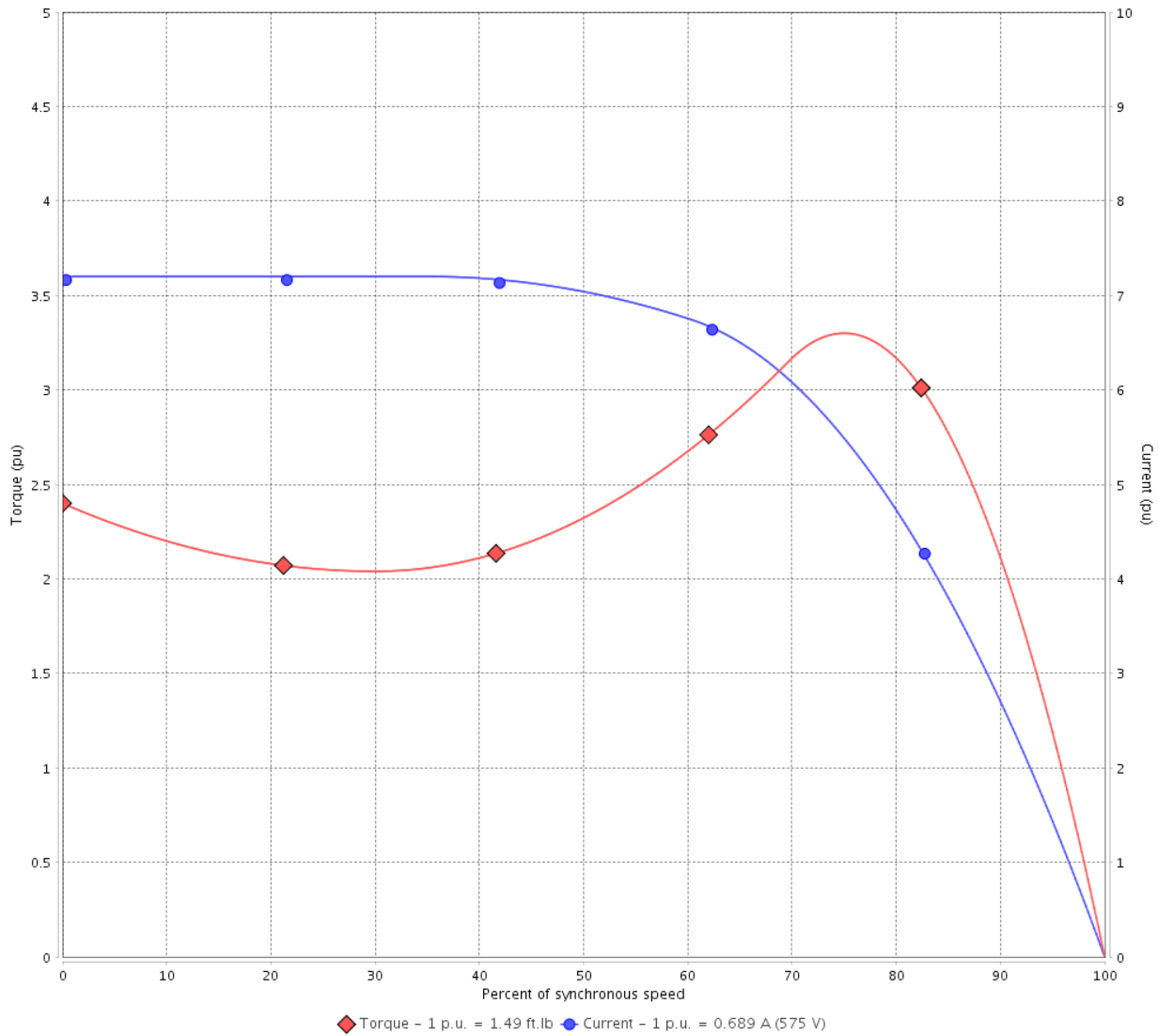
Three Phase Induction Motor - Squirrel Cage



Customer :

Product line : Premium Efficiency Three-Phase Product code : 12809207
 Catalog # : .5018OT3H56CFL-S

TORQUE AND CURRENT VS SPEED CURVE



Performance : 575 V 60 Hz 4P

Rated current	: 0.689 A	Moment of inertia (J)	: 0.0584 sq.ft.lb
LRC	: 7.2	Duty cycle	: Cont.(S1)
Rated torque	: 1.49 ft.lb	Insulation class	: F
Locked rotor torque	: 240 %	Service factor	: 1.25
Breakdown torque	: 330 %	Temperature rise	: 80 K
Rated speed	: 1765 rpm		

Locked rotor time : 48s (cold) 27s (hot)

Rev.	Changes Summary	Performed	Checked	Date
Performed by			Page 2 / 5	Revision
Checked by				
Date	14/04/2022			

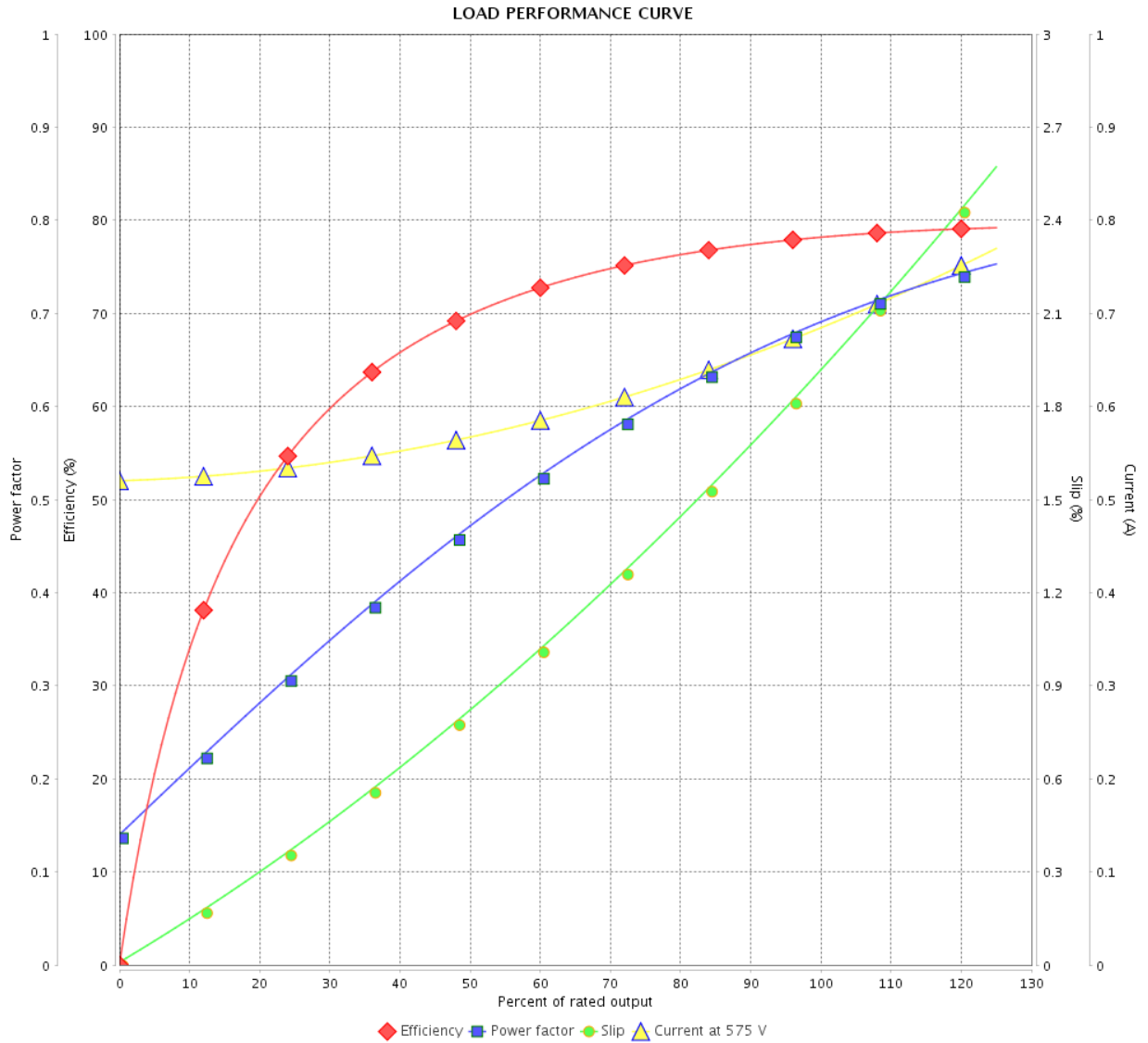
LOAD PERFORMANCE CURVE

Three Phase Induction Motor - Squirrel Cage



Customer :

Product line : Premium Efficiency Three-Phase Product code : 12809207
 Catalog # : .5018OT3H56CFL-S



Performance : 575 V 60 Hz 4P

Rated current : 0.689 A
 LRC : 7.2
 Rated torque : 1.49 ft.lb
 Locked rotor torque : 240 %
 Breakdown torque : 330 %
 Rated speed : 1765 rpm

Moment of inertia (J) : 0.0584 sq.ft.lb
 Duty cycle : Cont.(S1)
 Insulation class : F
 Service factor : 1.25
 Temperature rise : 80 K

Rev.	Changes Summary	Performed	Checked	Date
Performed by			Page	Revision
Checked by				
Date				
			3 / 5	

THERMAL LIMIT CURVE

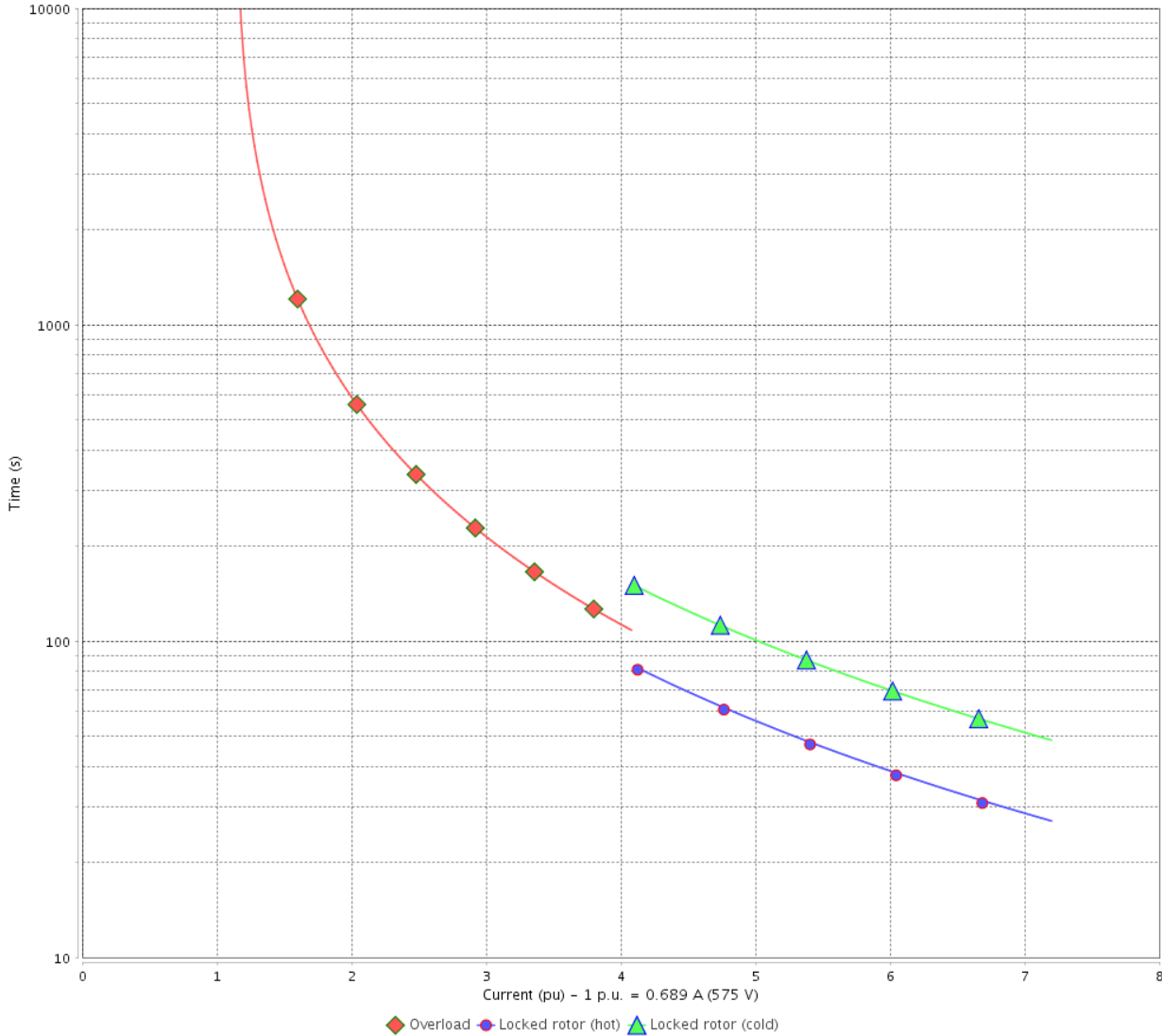
Three Phase Induction Motor - Squirrel Cage



Customer :

Product line : Premium Efficiency Three-Phase Product code : 12809207
 Catalog # : .5018OT3H56CFL-S

THERMAL LIMIT CURVE



Performance : 575 V 60 Hz 4P

Rated current : 0.689 A
 LRC : 7.2
 Rated torque : 1.49 ft.lb
 Locked rotor torque : 240 %
 Breakdown torque : 330 %
 Rated speed : 1765 rpm

Moment of inertia (J) : 0.0584 sq.ft.lb
 Duty cycle : Cont.(S1)
 Insulation class : F
 Service factor : 1.25
 Temperature rise : 80 K

Heating constant
 Cooling constant

Rev.	Changes Summary	Performed	Checked	Date
Performed by			Page 4 / 5	Revision
Checked by				
Date	14/04/2022			

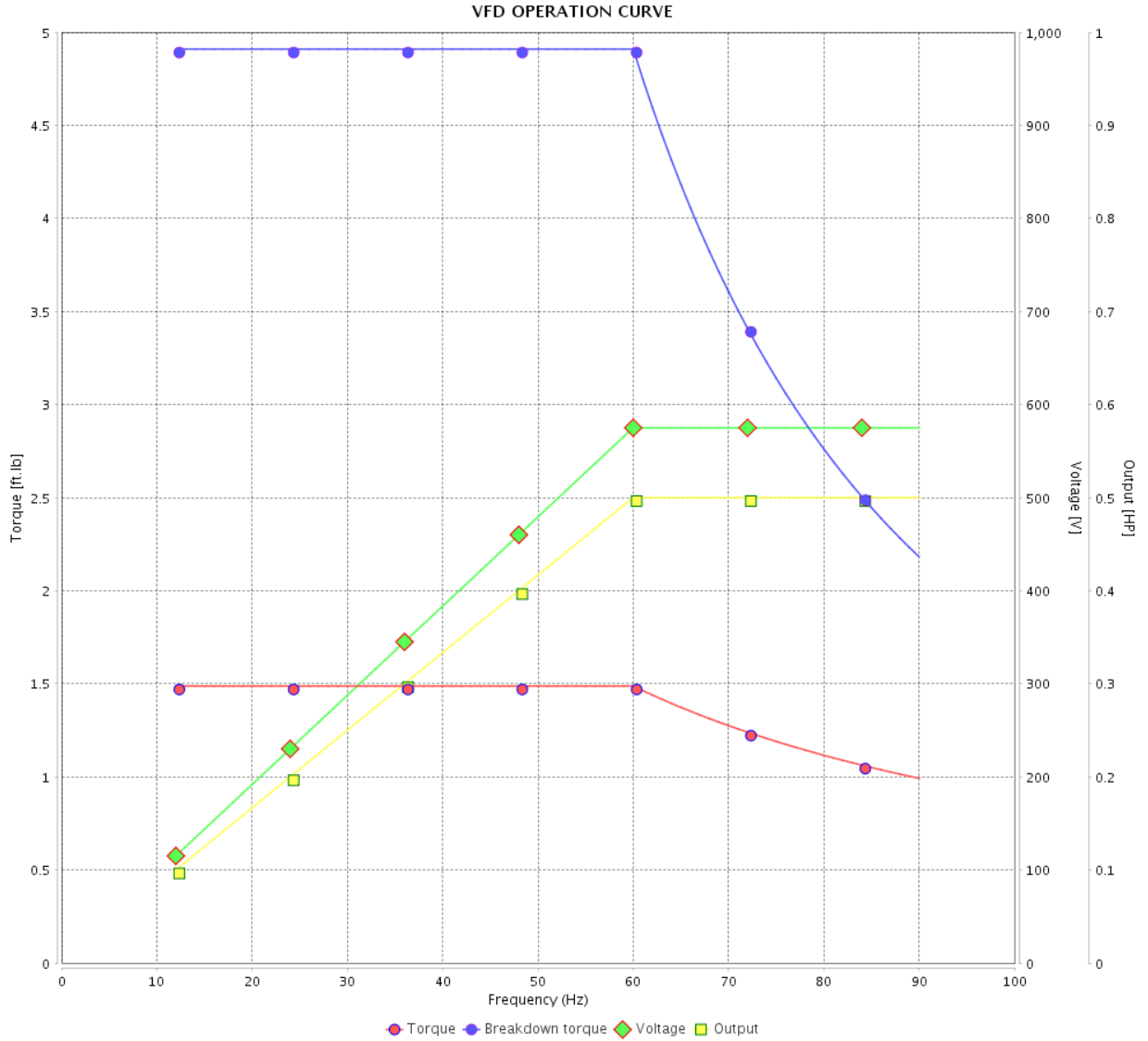
VFD OPERATION CURVE

Three Phase Induction Motor - Squirrel Cage



Customer :

Product line : Premium Efficiency Three-Phase Product code : 12809207
 Catalog # : .5018OT3H56CFL-S



Performance : 575 V 60 Hz 4P

Rated current : 0.689 A
 LRC : 7.2
 Rated torque : 1.49 ft.lb
 Locked rotor torque : 240 %
 Breakdown torque : 330 %
 Rated speed : 1765 rpm

Moment of inertia (J) : 0.0584 sq.ft.lb
 Duty cycle : Cont.(S1)
 Insulation class : F
 Service factor : 1.25
 Temperature rise : 80 K

Rev.	Changes Summary	Performed	Checked	Date
Performed by			Page 5 / 5	Revision
Checked by				
Date	14/04/2022			

1 2 3 4 5 6

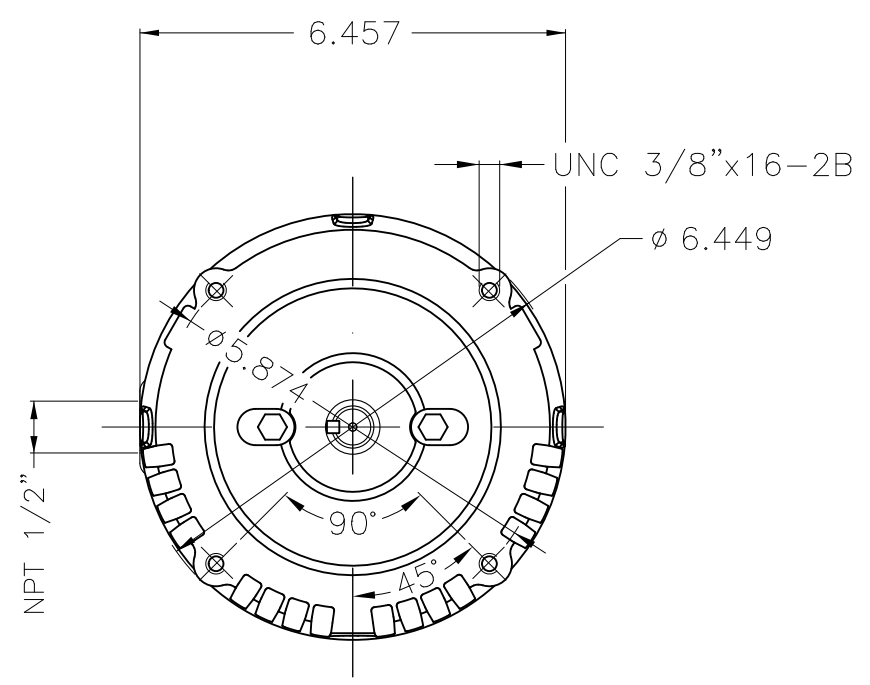
A

B

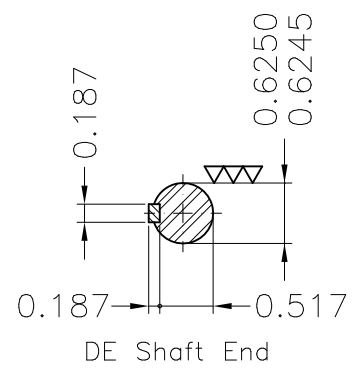
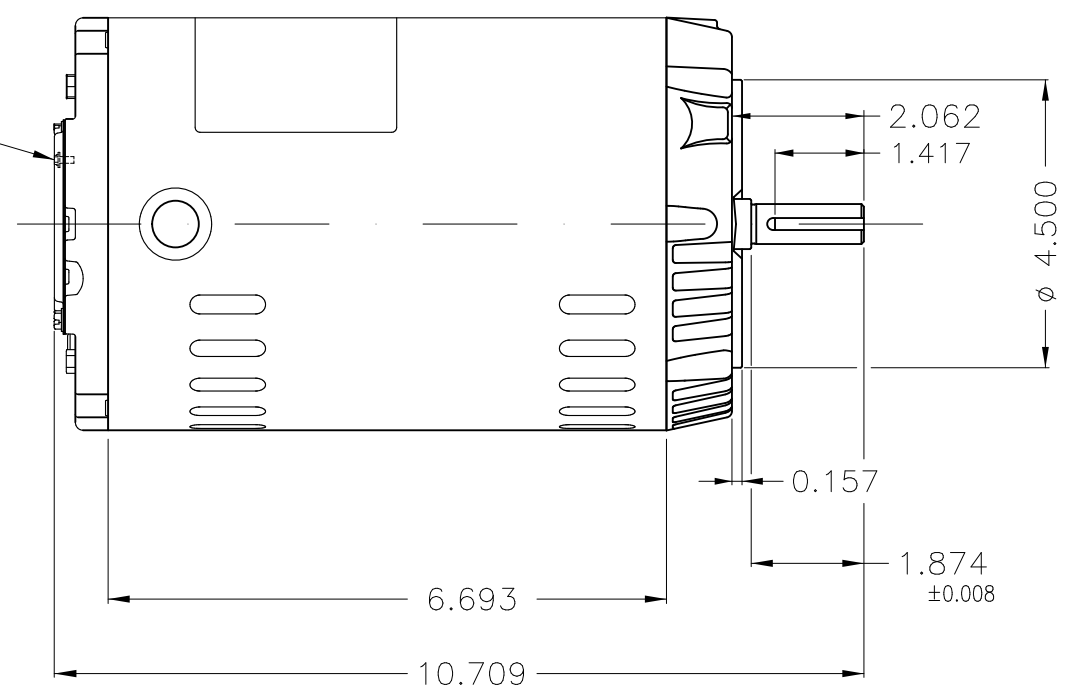
C

D


E



Grounding



Dimensions in inches

Without coating										
Mounting F-1/B14R(D)										
ECM	LOC	SUMMARY OF MODIFICATIONS				EXECUTED	CHECKED	RELEASED	DATE	VER
EXECUTED	PIRWUSER	THREE PH. MOTOR ROLLED STEEL PREM. EFF.					PREVIEW WDD			
CHECKED		FRAME 56C IP21 ODP								
RELEASED										
REL DT.		WMO	Jaragua do Sul	Product Engineering	SHEET	1 / 1				

0.5 HP 04 Poles 60 Hz

A

XME A3



MADE IN MEXICO

MAT: 12809207

W01.T00IC0X0X

MODEL .5018OT3H56CFL-S
22OUT2019

PH 3 FR 56C | HP(kW) 0.50(0.37) | Hz 60

V 575 | RPM 1765

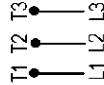
A 0.689 | DUTY CONT.

SFA 0.861 | CODE L DES -

SF 1.25 | INS CL F ΔT 80K AMB 40°C ENCL ODP

ALT 1000 m.a.s.l. | AVG. F.L. EFF. 78.2% | PF 0.69

ALTERNATE RATING:



T1-BLU T2-WHT
T3-ORG

Inverter duty motor For use on VPWM 1000:1 VT, 5:1 CT

DE: 6203-ZZ ODE: 6202-ZZ MOBIL POLYREX EM

WARNING: Motor must be grounded in accordance with local and national electrical codes to prevent serious electrical shocks. Disconnect power source before servicing unit.

AVERTISSEMENT: Le moteur doit être mis à la terre conformément aux codes électriques locaux et nationaux afin d'éviter tout choc électrique grave. Déconnectez l'alimentation avant l'entretien de la machine.



3PT9

