

DATA SHEET



Three Phase Induction Motor - Squirrel Cage

Customer :						
Product line		: Standard Efficiency Three-Phase		Product code :	14797643	
				Catalog # :	.5036ES3H56C-S	
Frame	: 56C		Locked rotor time	: 63s (cold) 35s (hot)		
Output	: 0.5 HP (0.37 kW)		Temperature rise	: 80 K		
Poles	: 2		Duty cycle	: Cont.(S1)		
Frequency	: 60 Hz		Ambient temperature	: -20°C to +40°C		
Rated voltage	: 575 V		Altitude	: 1000 m.a.s.l.		
Rated current	: 0.674 A		Protection degree	: IP55		
L. R. Amperes	: 4.72 A		Cooling method	: IC411 - TEFC		
LRC	: 7.0x(Code L)		Mounting	: F-1		
No load current	: 0.360 A		Rotation ¹	: Both (CW and CCW)		
Rated speed	: 3500 rpm		Noise level ²	: 68.0 dB(A)		
Slip	: 2.78 %		Starting method	: Direct On Line		
Rated torque	: 0.750 ft.lb		Approx. weight ³	: 20.0 lb		
Locked rotor torque	: 260 %					
Breakdown torque	: 300 %					
Insulation class	: F					
Service factor	: 1.15					
Moment of inertia (J)	: 0.0453 sq.ft.lb					
Output	25%	50%	75%	100%	Foundation loads	
Efficiency (%)	50.9	55.0	62.0	68.0	Max. traction : 12 lb	
Power Factor	0.43	0.67	0.75	0.81	Max. compression : 32 lb	
			<u>Drive end</u>		<u>Non drive end</u>	
Bearing type	:	6203 ZZ		6202 ZZ		
Sealing	:	V'Ring		Without Bearing Seal		
Lubrication interval	:	-		-		
Lubricant amount	:	-		-		
Lubricant type	:	Mobil Polyrex EM				
Notes						
This revision replaces and cancel the previous one, which must be eliminated. (1) Looking the motor from the shaft end. (2) Measured at 1m and with tolerance of +3dB(A). (3) Approximate weight subject to changes after manufacturing process. (4) At 100% of full load.			These are average values based on tests with sinusoidal power supply, subject to the tolerances stipulated in NEMA MG-1.			
Rev.	Changes Summary			Performed	Checked	Date
Performed by						
Checked by					Page	Revision
Date	11/04/2022				1 / 5	

TORQUE AND CURRENT VS SPEED CURVE

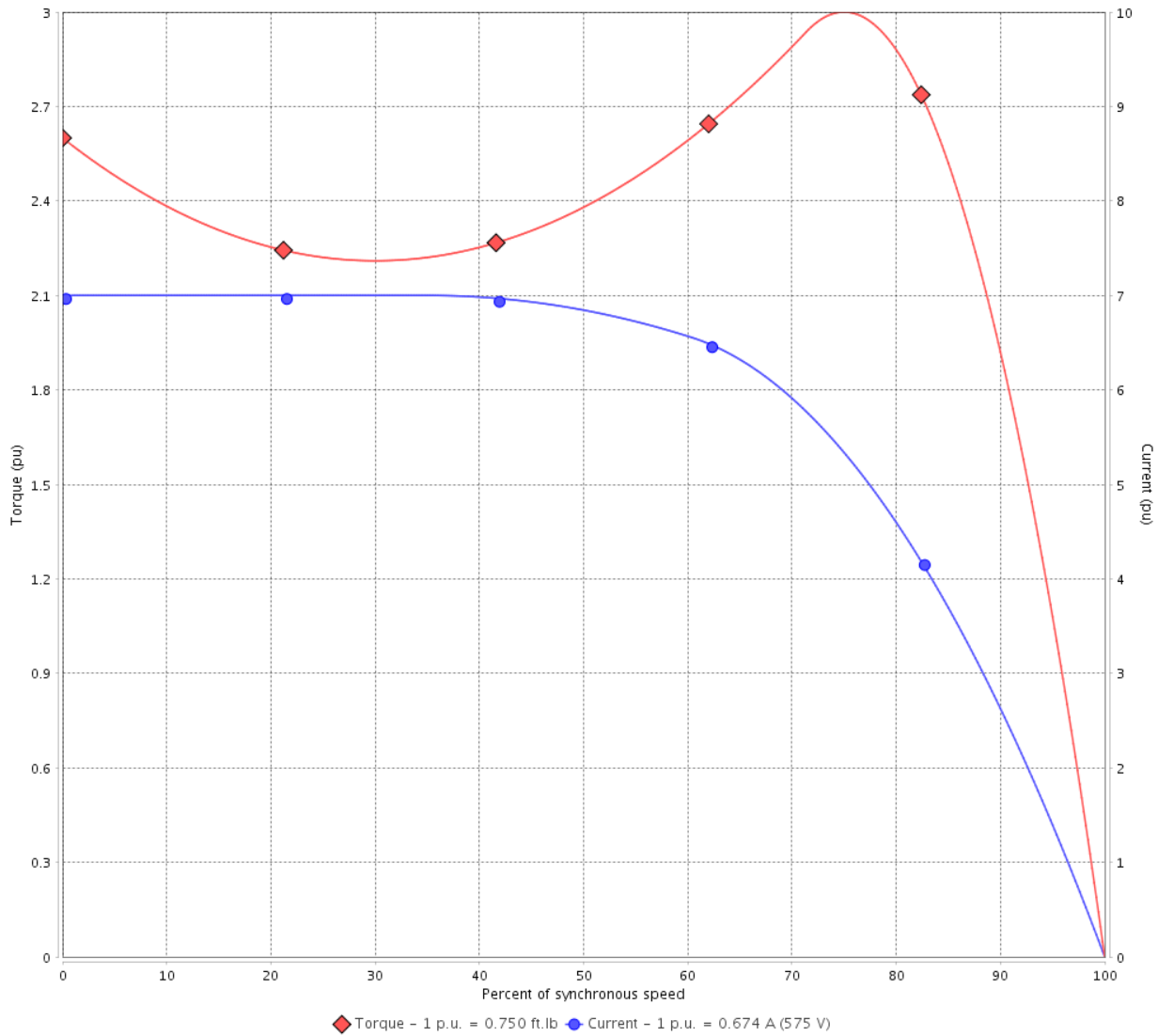
Three Phase Induction Motor - Squirrel Cage



Customer :

Product line : Standard Efficiency Three-Phase Product code : 14797643
 Catalog # : .5036ES3H56C-S

TORQUE AND CURRENT VS SPEED CURVE



Performance : 575 V 60 Hz 2P

Rated current	: 0.674 A	Moment of inertia (J)	: 0.0453 sq.ft.lb
LRC	: 7.0	Duty cycle	: Cont.(S1)
Rated torque	: 0.750 ft.lb	Insulation class	: F
Locked rotor torque	: 260 %	Service factor	: 1.15
Breakdown torque	: 300 %	Temperature rise	: 80 K
Rated speed	: 3500 rpm		

Locked rotor time : 63s (cold) 35s (hot)

Rev.	Changes Summary	Performed	Checked	Date
Performed by			Page 2 / 5	Revision
Checked by				
Date	11/04/2022			

LOAD PERFORMANCE CURVE

Three Phase Induction Motor - Squirrel Cage



Customer : _____

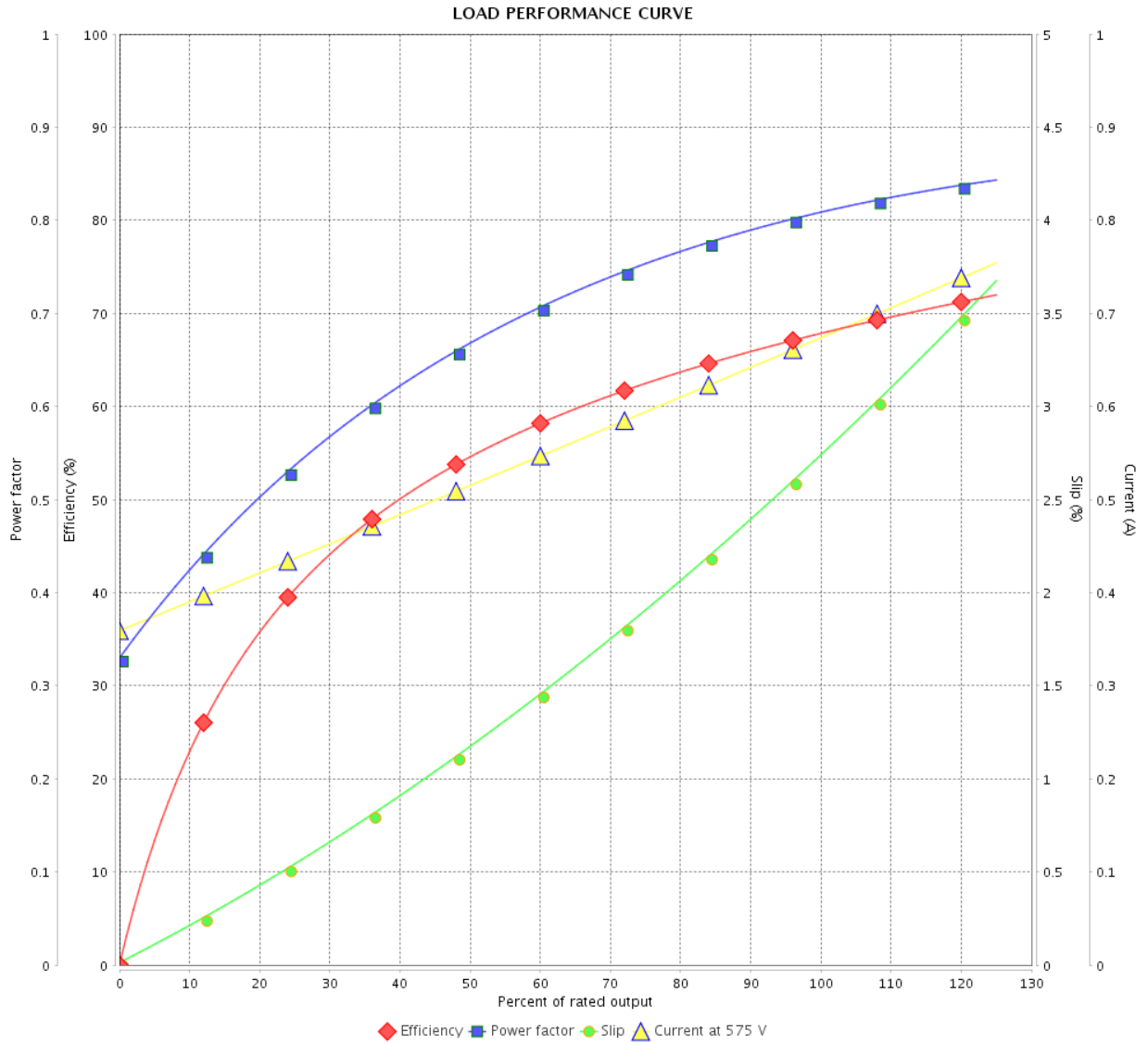
Product line : Standard Efficiency Three-Phase

Product code :

14797643

Catalog # :

.5036ES3H56C-S



Performance : 575 V 60 Hz 2P

Rated current : 0.674 A
 LRC : 7.0
 Rated torque : 0.750 ft.lb
 Locked rotor torque : 260 %
 Breakdown torque : 300 %
 Rated speed : 3500 rpm

Moment of inertia (J) : 0.0453 sq.ft.lb
 Duty cycle : Cont.(S1)
 Insulation class : F
 Service factor : 1.15
 Temperature rise : 80 K

Rev.	Changes Summary	Performed	Checked	Date
Performed by			Page	Revision
Checked by				
Date				

THERMAL LIMIT CURVE

Three Phase Induction Motor - Squirrel Cage



Customer : _____

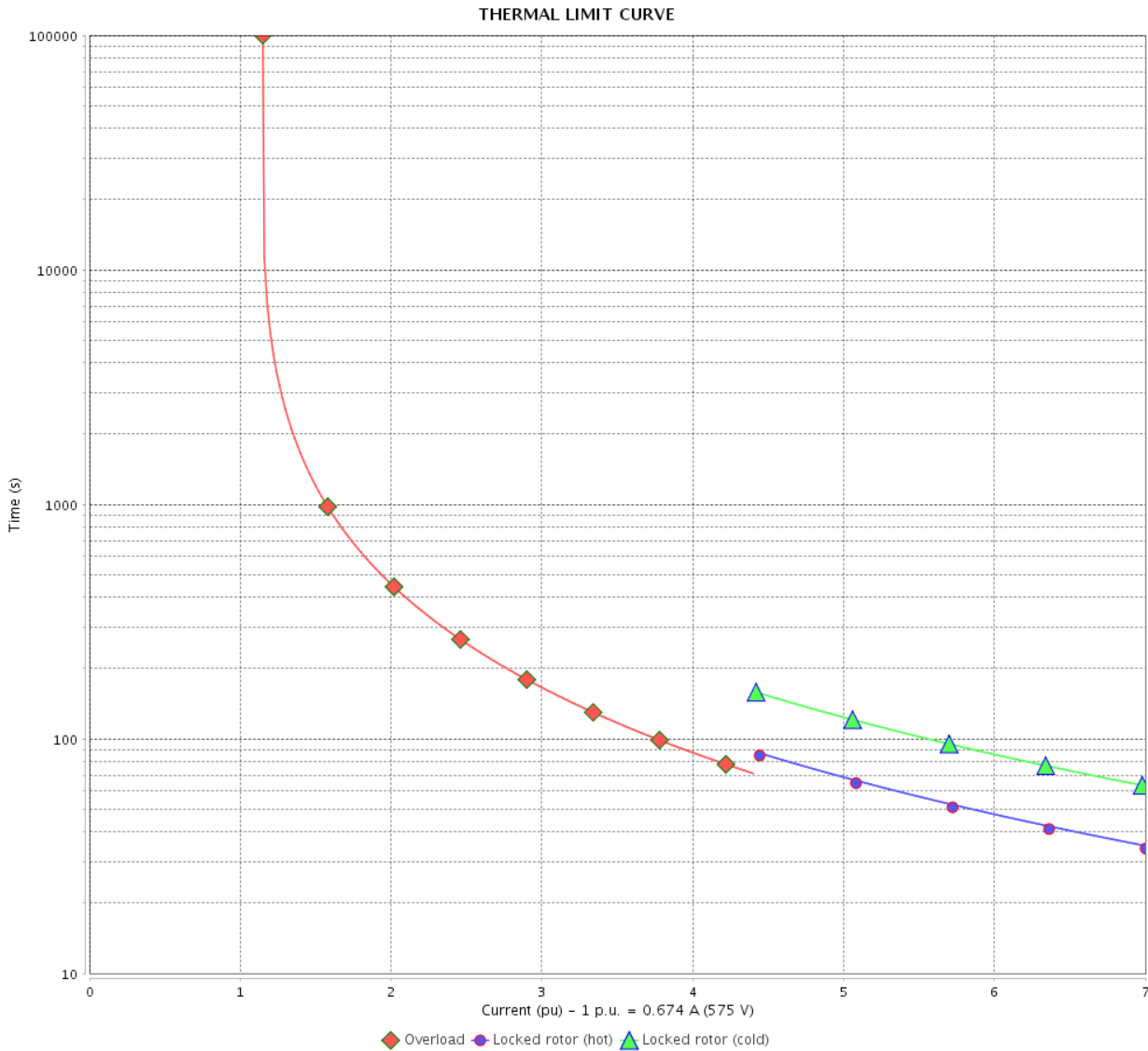
Product line : Standard Efficiency Three-Phase

Product code :

14797643

Catalog # :

.5036ES3H56C-S



Performance : 575 V 60 Hz 2P

Rated current : 0.674 A
 LRC : 7.0
 Rated torque : 0.750 ft.lb
 Locked rotor torque : 260 %
 Breakdown torque : 300 %
 Rated speed : 3500 rpm

Moment of inertia (J) : 0.0453 sq.ft.lb
 Duty cycle : Cont.(S1)
 Insulation class : F
 Service factor : 1.15
 Temperature rise : 80 K

Heating constant

Cooling constant

Rev.	Changes Summary	Performed	Checked	Date
Performed by	11/04/2022	Page		Revision
Checked by		4 / 5		
Date				

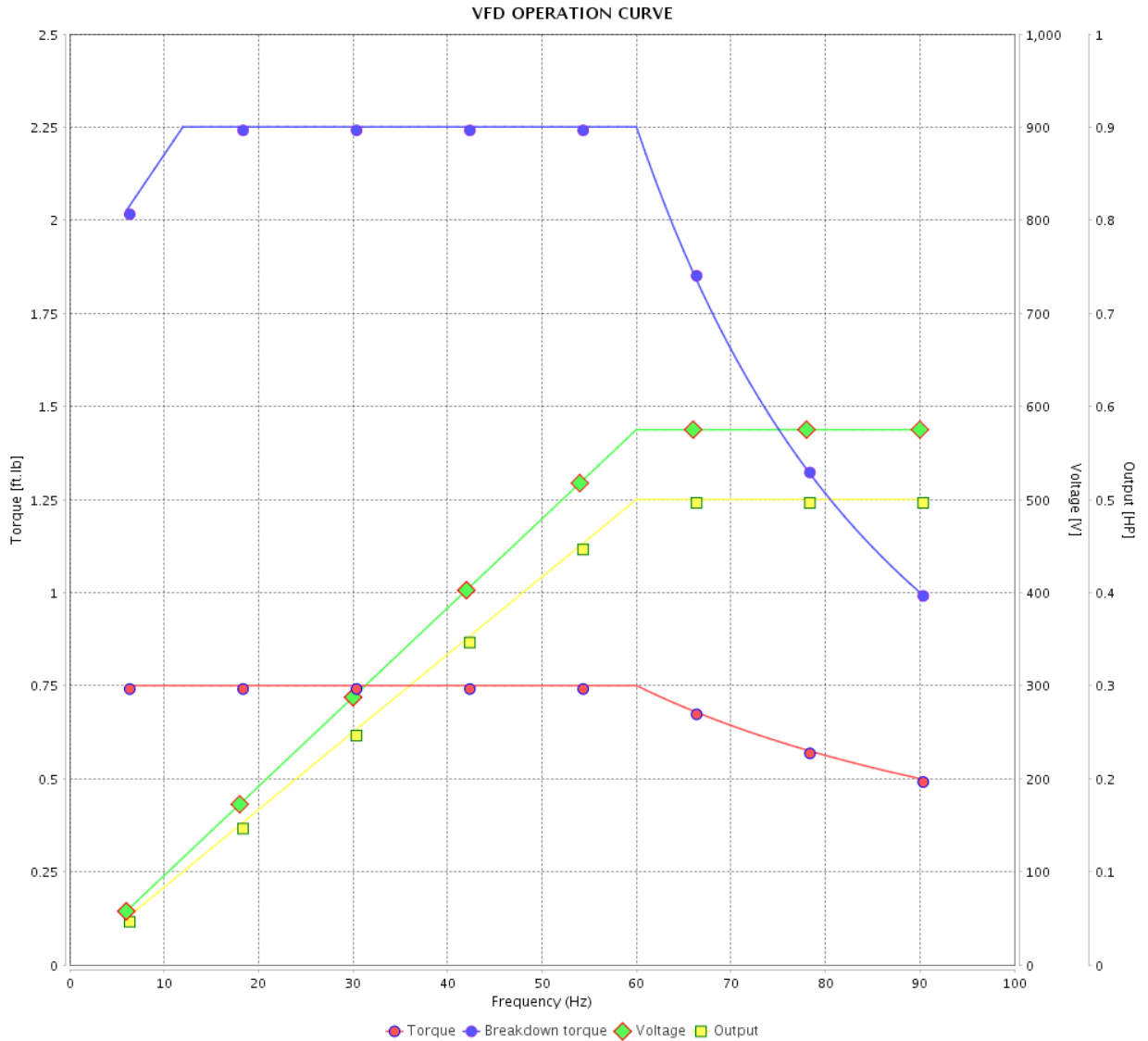
VFD OPERATION CURVE

Three Phase Induction Motor - Squirrel Cage



Customer : _____

Product line : Standard Efficiency Three-Phase Product code : 14797643
 Catalog # : .5036ES3H56C-S

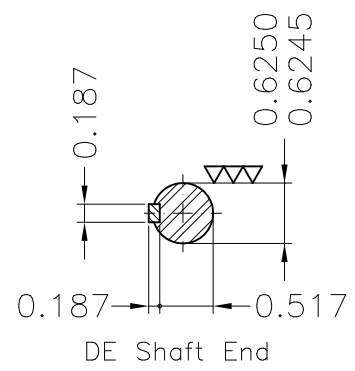
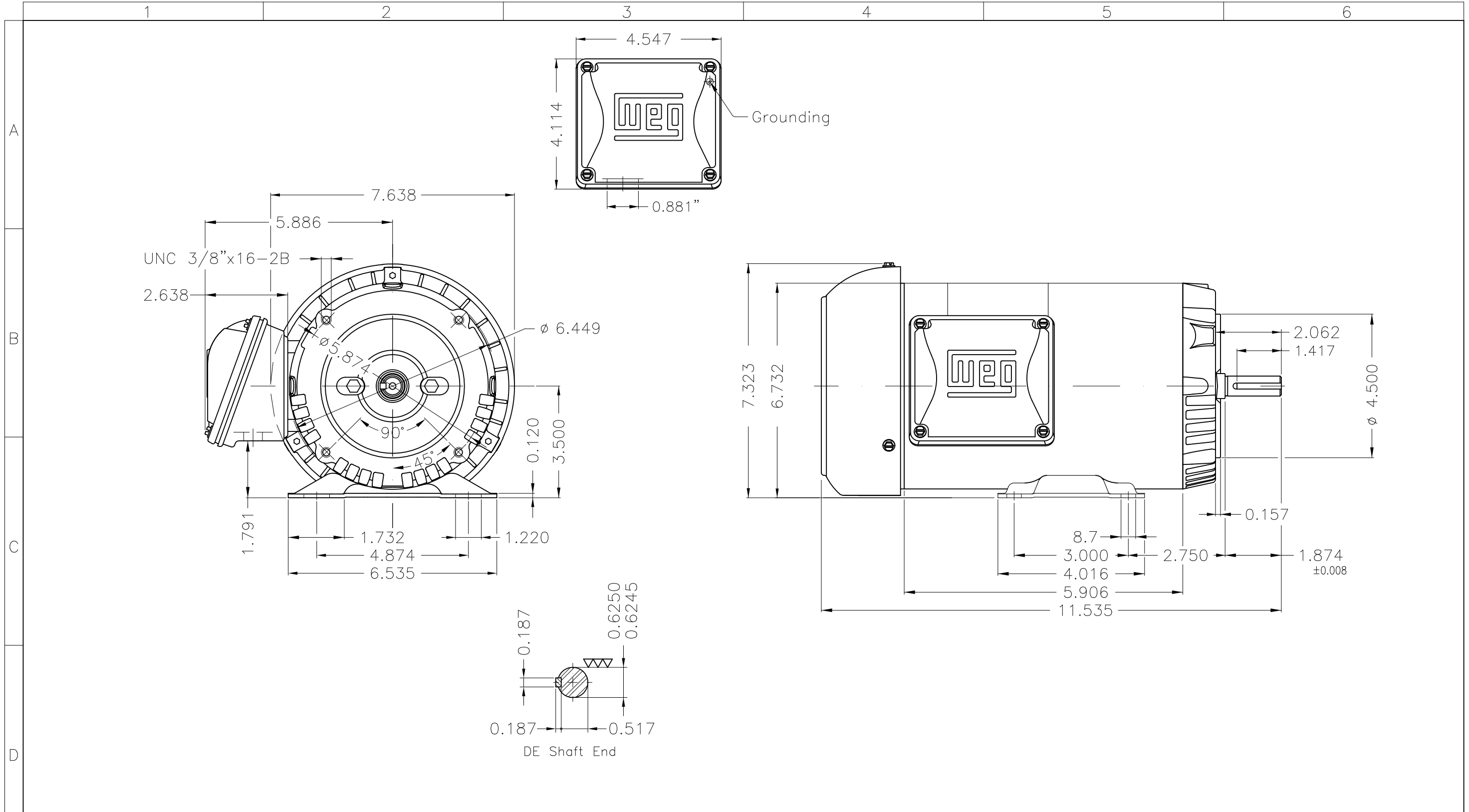


Performance : 575 V 60 Hz 2P

Rated current : 0.674 A
 LRC : 7.0
 Rated torque : 0.750 ft.lb
 Locked rotor torque : 260 %
 Breakdown torque : 300 %
 Rated speed : 3500 rpm

Moment of inertia (J) : 0.0453 sq.ft.lb
 Duty cycle : Cont.(S1)
 Insulation class : F
 Service factor : 1.15
 Temperature rise : 80 K

Rev.	Changes Summary	Performed	Checked	Date
Performed by			Page 5 / 5	Revision
Checked by				
Date	11/04/2022			



Fan cover - steel plate
 Color Munsell N 1 matte black
 Painting plan 207N
 Mounting F-1/B34R(D)

ECM	LOC	SUMMARY OF MODIFICATIONS	EXECUTED	CHECKED	RELEASED	DATE	VER
EXECUTED	PIRWUSER	THREE PH. MOTOR ROLLED STEEL					
CHECKED		FRAME 56C IP55 TEFC					
RELEASED							
REL DT.	WMO	Jaragua do Sul	Product Engineering	SHEET	1 / 1		

0.5 HP 02 Poles 60 Hz

Dimensions in inches XME A3



PREVIEW
WDD



MADE IN MEXICO

MAT: 14797643

W01.TE0IC0X0X

MODEL 5036ES3H56C-S

06DEC2021 B/N:

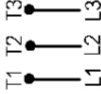


**For 60Hz: Class I, Zone 2, IIC
Class I, Div.2, Gr. A,B,C,D - T3
DIV 2 Inverter Duty (SF1.00)
CT 2:1/VT 1000:1**

PH 3	Hz 60	HP 0.50
FR 56C		KW 0.37
DUTY CONT.		V 575
ALT 1000 m.a.s.l		A 0.674
INS CL F AT 80K	IP55	SFA 0.775
AMB 40°C	DES -	SF 1.15
ENCL TEFC	CODE L	PF 0.81
		RPM 3500
		NEMA NOM. EFF 68.0%

For safe area-inverter duty motor For use on VPWM 1000:1 VT, 10:1 CT

DE 6203-ZZ ODE 6202-ZZ MOBIL POLYREX EM



T1-BLU

T2-WHT

T3-ORG



INTERCHANGE ANY TWO LINE WIRES TO REVERSE THE ROTATION

WARNING: Motor must be grounded in accordance with local and national electrical codes to prevent serious electrical shocks. Disconnect power source before servicing unit.

AVERTISSEMENT: Le moteur doit être mis à la terre

conformément aux codes électriques locaux et nationaux afin d'éviter tout choc électrique grave. Déconnectez l'alimentation avant l'entretien de la machine.

