

TORQUE AND CURRENT VS SPEED CURVE

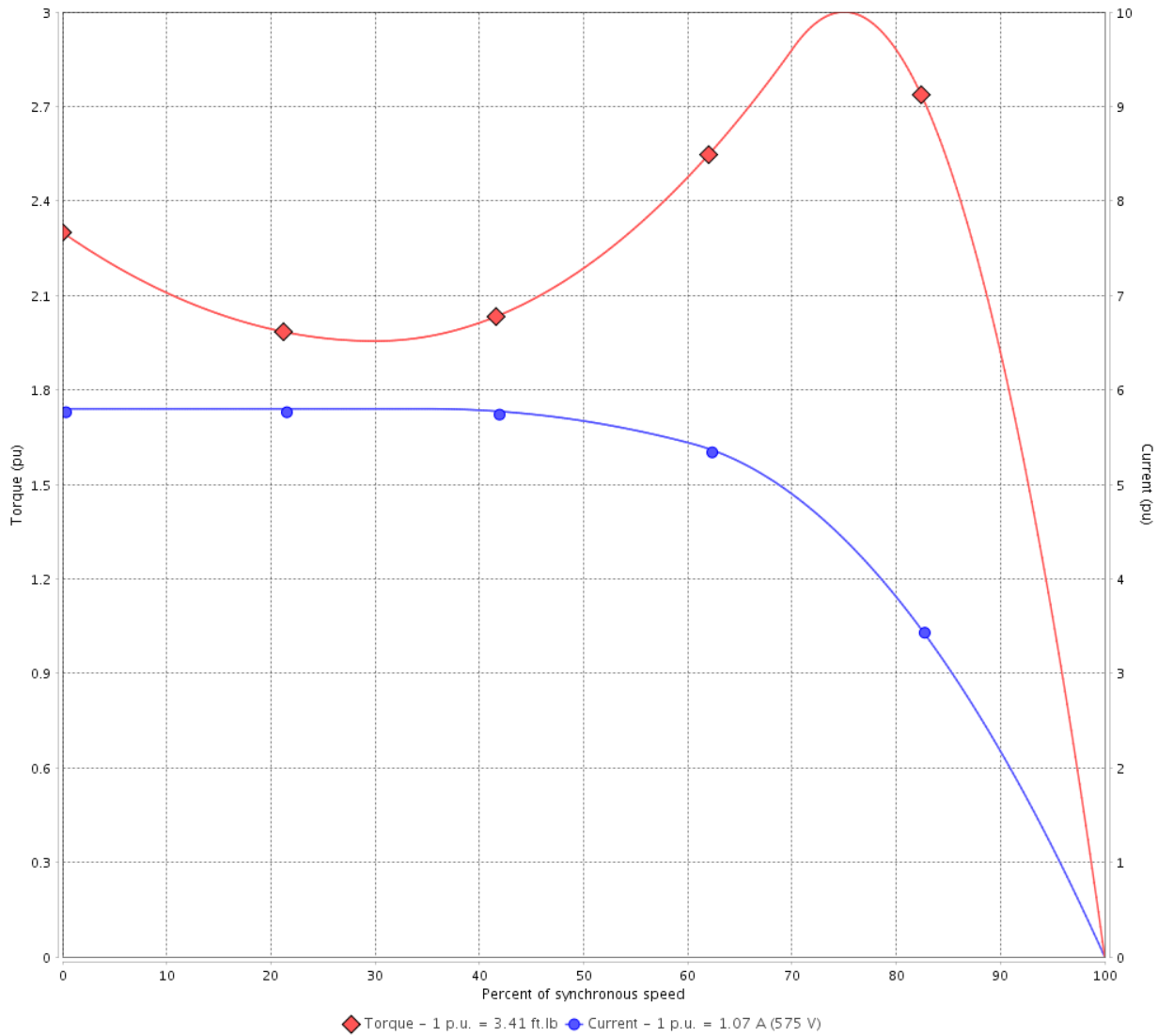
Three Phase Induction Motor - Squirrel Cage



Customer :

Product line : Standard Efficiency Three-Phase Product code : 14786475
 Catalog # : .7512ES3H56CFL-S

TORQUE AND CURRENT VS SPEED CURVE



Performance : 575 V 60 Hz 6P

Rated current	: 1.07 A	Moment of inertia (J)	: 0.1331 sq.ft.lb
LRC	: 5.8	Duty cycle	: Cont.(S1)
Rated torque	: 3.41 ft.lb	Insulation class	: F
Locked rotor torque	: 229 %	Service factor	: 1.15
Breakdown torque	: 300 %	Temperature rise	: 80 K
Rated speed	: 1155 rpm	Design	: A

Locked rotor time : 37s (cold) 21s (hot)

Rev.	Changes Summary	Performed	Checked	Date
Performed by			Page 2 / 5	Revision
Checked by				
Date	11/04/2022			

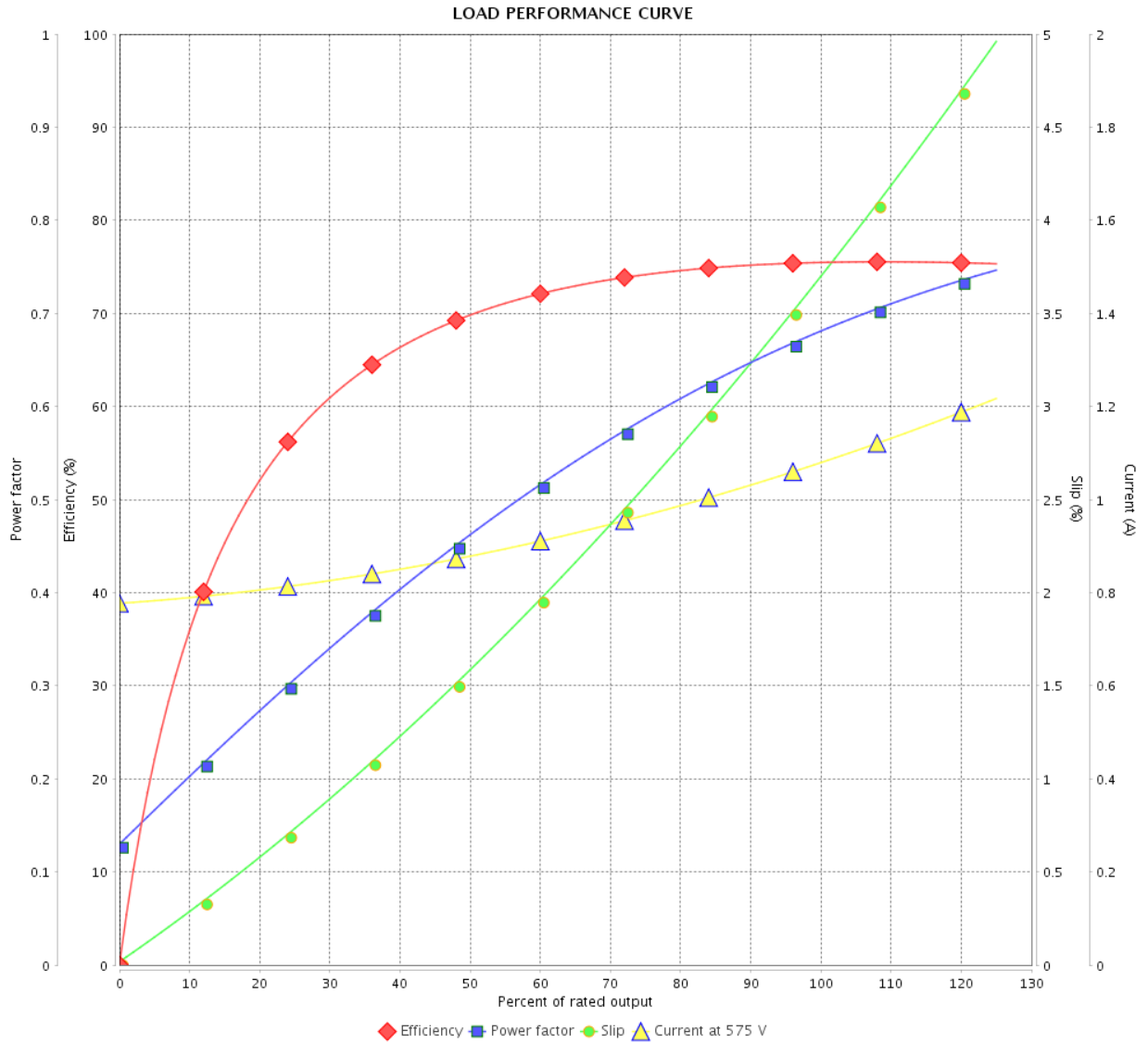
LOAD PERFORMANCE CURVE

Three Phase Induction Motor - Squirrel Cage



Customer : _____

Product line : Standard Efficiency Three-Phase Product code : 14786475
 Catalog # : .7512ES3H56CFL-S



Performance : 575 V 60 Hz 6P

Rated current : 1.07 A
 LRC : 5.8
 Rated torque : 3.41 ft.lb
 Locked rotor torque : 229 %
 Breakdown torque : 300 %
 Rated speed : 1155 rpm

Moment of inertia (J) : 0.1331 sq.ft.lb
 Duty cycle : Cont.(S1)
 Insulation class : F
 Service factor : 1.15
 Temperature rise : 80 K
 Design : A

Rev.	Changes Summary	Performed	Checked	Date
Performed by			Page	Revision
Checked by				
Date				

THERMAL LIMIT CURVE

Three Phase Induction Motor - Squirrel Cage



Customer : _____

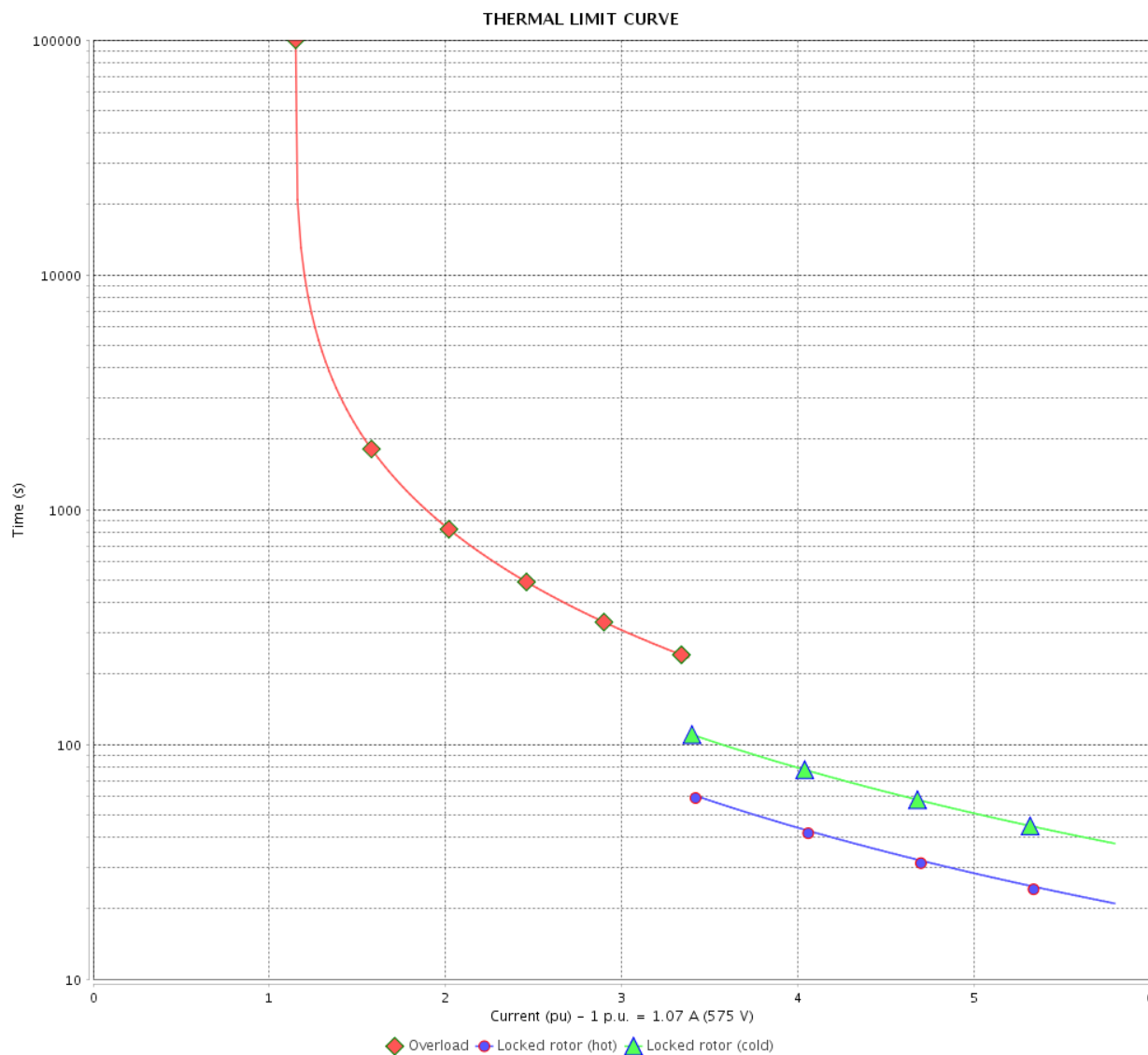
Product line : Standard Efficiency Three-Phase

Product code :

14786475

Catalog # :

.7512ES3H56CFL-S



Performance : 575 V 60 Hz 6P

Rated current : 1.07 A
 LRC : 5.8
 Rated torque : 3.41 ft.lb
 Locked rotor torque : 229 %
 Breakdown torque : 300 %
 Rated speed : 1155 rpm

Moment of inertia (J) : 0.1331 sq.ft.lb
 Duty cycle : Cont.(S1)
 Insulation class : F
 Service factor : 1.15
 Temperature rise : 80 K
 Design : A

Heating constant
 Cooling constant

Rev.	Changes Summary	Performed	Checked	Date
Performed by	11/04/2022	Page		Revision
Checked by		4 / 5		
Date				

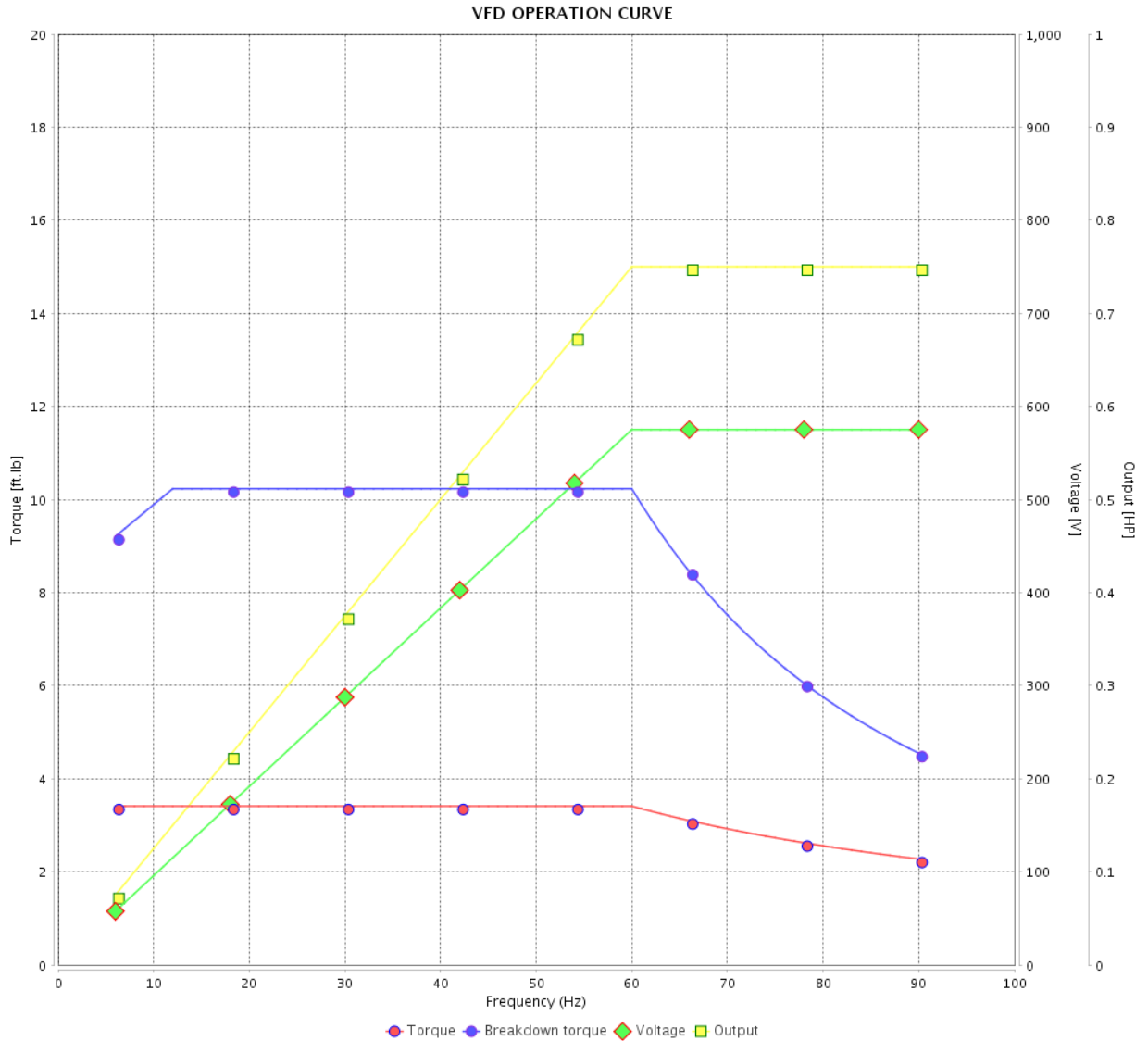
VFD OPERATION CURVE

Three Phase Induction Motor - Squirrel Cage



Customer :

Product line : Standard Efficiency Three-Phase Product code : 14786475
 Catalog # : .7512ES3H56CFL-S

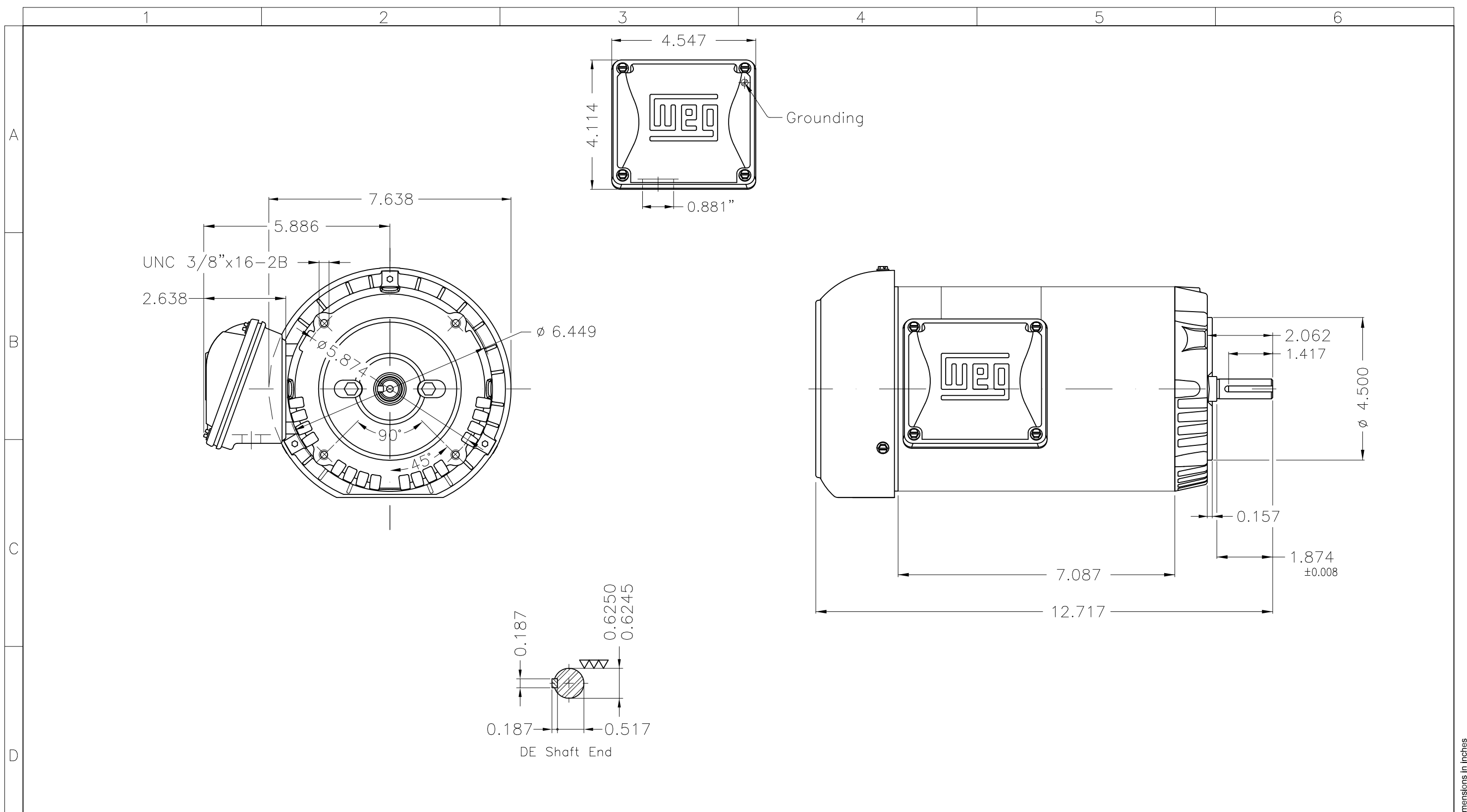


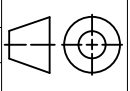

Performance : 575 V 60 Hz 6P

Rated current : 1.07 A
 LRC : 5.8
 Rated torque : 3.41 ft.lb
 Locked rotor torque : 229 %
 Breakdown torque : 300 %
 Rated speed : 1155 rpm

Moment of inertia (J) : 0.1331 sq.ft.lb
 Duty cycle : Cont.(S1)
 Insulation class : F
 Service factor : 1.15
 Temperature rise : 80 K
 Design : A

Rev.	Changes Summary	Performed	Checked	Date
Performed by			Page 5 / 5	Revision
Checked by				
Date	11/04/2022			



Fan cover - steel plate									
Color Munsell N 1 matte black									
Painting plan 207N									
Mounting F-1/B14R(D)									
ECM	LOC	SUMMARY OF MODIFICATIONS			EXECUTED	CHECKED	RELEASED	DATE	VER
EXECUTED	PIRWUSER	THREE PH. MOTOR ROLLED STEEL				PREVIEW WDD			1 / 1
CHECKED		FRAME 56C IP55 TEFC							
RELEASED									
REL DT.		WMO	Jaragua do Sul	Product Engineering	SHEET	1 / 1			

0.75 HP 06 Poles 60 Hz



MADE IN MEXICO

MAT: 14786475

W01.TE0IC0X0X

MODEL 7512ES3H56CFL-S

08OCT2021 B/N:

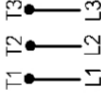


**For 60Hz: Class I, Zone 2, IIC
Class I, Div.2, Gr. A,B,C,D - T3
Div 2 Inverter Duty (SF1.00)
CT 2:1/VT 1000:1**

PH 3	Hz 60	HP 0.75
FR 56C		KW 0.55
DUTY CONT.		V 575
ALT 1000 m.a.s.l		A 1.07
INS CL F AT 80K	IP55	SFA 1.23
AMB 40°C	DES A	SF 1.15
ENCL TEFC	CODE K	PF 0.68
		RPM 1155
		NEMA NOM. EFF 75.5%

For safe area-inverter duty motor For use on VPWM 1000:1 VT, 10:1 CT

DE 6203-ZZ ODE 6202-ZZ MOBIL POLYREX EM



T1-BLU

T2-WHT

T3-ORG



INTERCHANGE ANY TWO LINE WIRES TO REVERSE THE ROTATION

WARNING: Motor must be grounded in accordance with local and national electrical codes to prevent serious electrical shocks. Disconnect power source before servicing unit.

AVERTISSEMENT: Le moteur doit être mis à la terre

conformément aux codes électriques locaux et nationaux afin d'éviter tout choc électrique grave. Déconnectez l'alimentation avant l'entretien de la machine.

