

DATA SHEET

Three Phase Induction Motor - Squirrel Cage



Customer :				
Product line	: Premium Efficiency Three-Phase	Product code :	13617169	
		Catalog # :	.7512OT3E56-S	
Frame	: 56H	Cooling method	: IC01 - ODP	
Insulation class	: F	Mounting	: F-1	
Duty cycle	: Cont.(S1)	Rotation ¹	: Both (CW and CCW)	
Ambient temperature	: -20°C to +40°C	Starting method	: Direct On Line	
Altitude	: 1000 m.a.s.l.	Approx. weight ²	: 35.8 lb	
Design	: A	Moment of inertia (J)	: 0.1685 sq.ft.lb	
Output [HP]	0.75	0.75	0.75	
Poles	6	6	6	
Frequency [Hz]	60	50	50	
Rated voltage [V]	208-230/460	190/380	220/415	
Rated current [A]	2.78-2.52/1.26	2.86/1.43	2.64/1.40	
L. R. Amperes [A]	16.4-14.9/7.43	13.2/6.58	13.2/7.00	
LRC [A]	5.9x(Code J)	4.6x(Code G)	5.0x(Code H)	
No load current [A]	1.55-1.79/0.896	1.77/0.886	1.78/0.943	
Rated speed [RPM]	1160	945	950	
Slip [%]	3.33	5.50	5.00	
Rated torque [ft.lb]	3.40	4.17	4.15	
Locked rotor torque [%]	220	170	200	
Breakdown torque [%]	280	229	260	
Service factor		1.15	1.15	
Temperature rise	80 K	80 K	80 K	
Locked rotor time	59s (cold) 33s (hot)	64s (cold) 36s (hot)	57s (cold) 32s (hot)	
Noise level ²	50.0 dB(A)	48.0 dB(A)	48.0 dB(A)	
Efficiency (%)	25%	73.7	75.9	
	50%	75.5	76.2	
	75%	80.0	78.9	
	100%	81.7	78.7	
Power Factor	25%	0.25	0.27	
	50%	0.45	0.49	
	75%	0.58	0.63	
	100%	0.67	0.72	
Bearing type	: Drive end 6204 ZZ Non drive end 6202 ZZ	Foundation loads		
Sealing	: Without Without Bearing Seal Bearing Seal	Max. traction	: 88 lb	
		Max. compression	: 124 lb	
Lubrication interval	: - -			
Lubricant amount	: - -			
Lubricant type	: Mobil Polyrex EM			
Notes USABLE @208V SF 1.00				
This revision replaces and cancel the previous one, which must be eliminated. (1) Looking the motor from the shaft end. (2) Measured at 1m and with tolerance of +3dB(A). (3) Approximate weight subject to changes after manufacturing process. (4) At 100% of full load.		These are average values based on tests with sinusoidal power supply, subject to the tolerances stipulated in NEMA MG-1.		
Rev.	Changes Summary	Performed	Checked	Date
Performed by				
Checked by			Page	Revision
Date	14/04/2022		1 / 10	

TORQUE AND CURRENT VS SPEED CURVE

Three Phase Induction Motor - Squirrel Cage



Customer :

Product line : Premium Efficiency Three-Phase

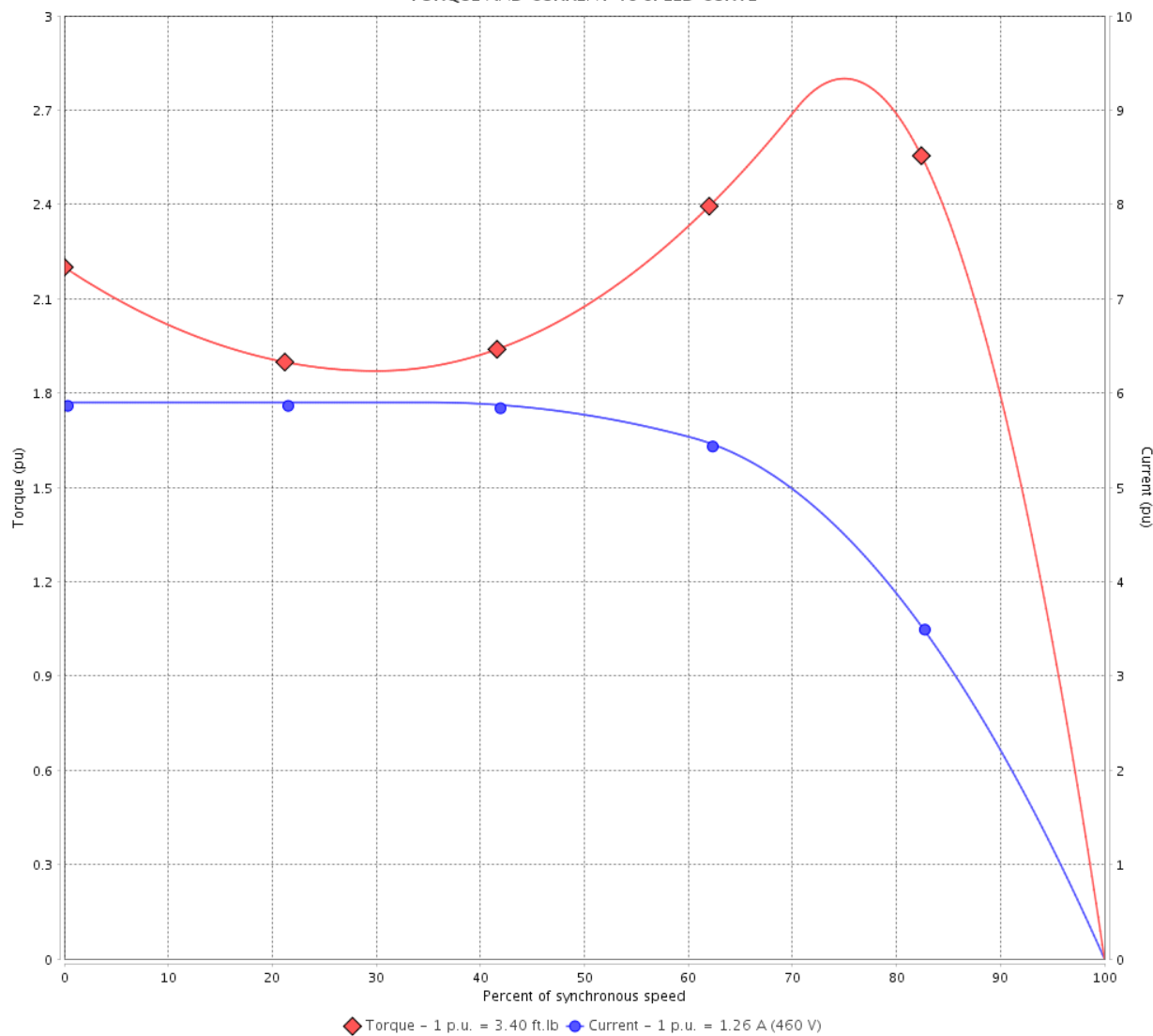
Product code :

13617169

Catalog # :

.7512OT3E56-S

TORQUE AND CURRENT VS SPEED CURVE



Performance : 208-230/460 V 60 Hz 6P

Rated current	: 2.78-2.52/1.26 A	Moment of inertia (J)	: 0.1685 sq.ft.lb
LRC	: 5.9	Duty cycle	: Cont.(S1)
Rated torque	: 3.40 ft.lb	Insulation class	: F
Locked rotor torque	: 220 %	Service factor	:
Breakdown torque	: 280 %	Temperature rise	: 80 K
Rated speed	: 1160 rpm	Design	: A

Locked rotor time : 59s (cold) 33s (hot)

Rev.	Changes Summary	Performed	Checked	Date
Performed by			Page 2 / 10	Revision
Checked by				
Date	14/04/2022			

TORQUE AND CURRENT VS SPEED CURVE

Three Phase Induction Motor - Squirrel Cage



Customer : _____

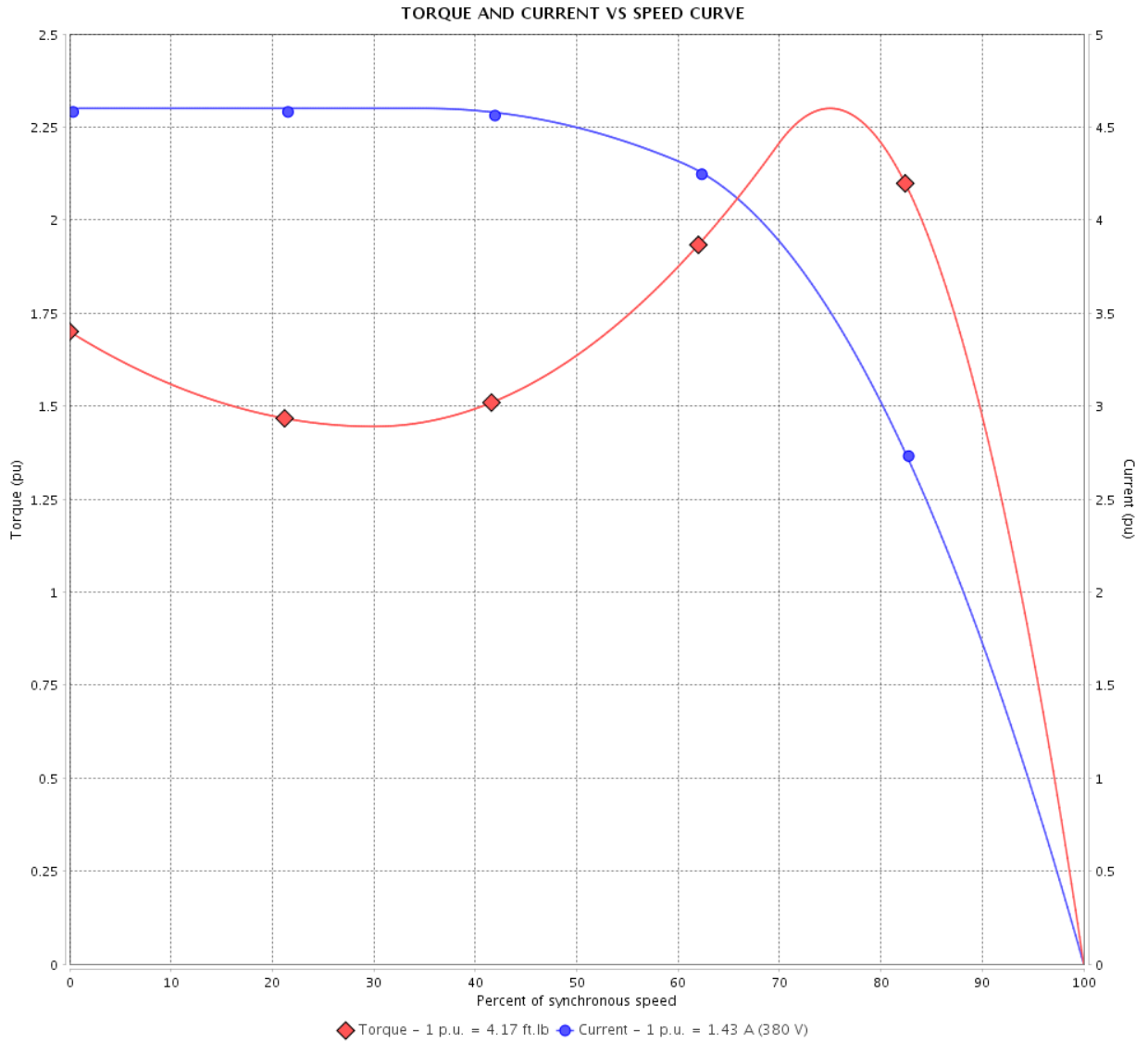
Product line : Premium Efficiency Three-Phase

Product code :

13617169

Catalog # :

.7512OT3E56-S



Performance : 190/380 V 50 Hz 6P

Rated current : 2.86/1.43 A
 LRC : 4.6
 Rated torque : 4.17 ft.lb
 Locked rotor torque : 170 %
 Breakdown torque : 229 %
 Rated speed : 945 rpm

Moment of inertia (J) : 0.1685 sq.ft.lb
 Duty cycle : Cont.(S1)
 Insulation class : F
 Service factor : 1.15
 Temperature rise : 80 K
 Design : A

Locked rotor time : 64s (cold) 36s (hot)

Rev.	Changes Summary	Performed	Checked	Date
Performed by			Page	Revision
Checked by				
Date	14/04/2022			

TORQUE AND CURRENT VS SPEED CURVE

Three Phase Induction Motor - Squirrel Cage



Customer :

Product line : Premium Efficiency Three-Phase

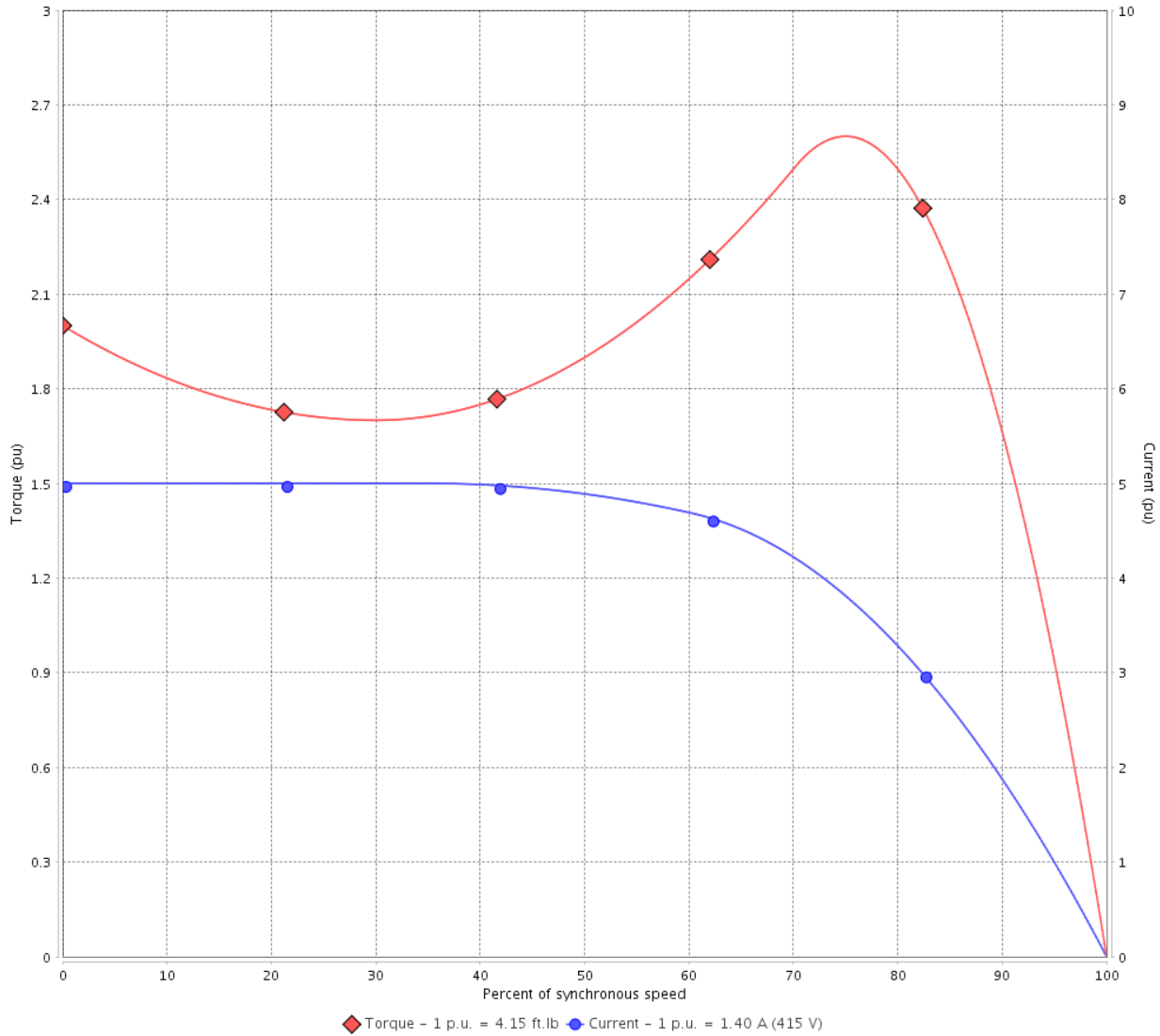
Product code :

13617169

Catalog # :

.7512OT3E56-S

TORQUE AND CURRENT VS SPEED CURVE



Performance : 220/415 V 50 Hz 6P

Rated current : 2.64/1.40 A
 LRC : 5.0
 Rated torque : 4.15 ft.lb
 Locked rotor torque : 200 %
 Breakdown torque : 260 %
 Rated speed : 950 rpm

Moment of inertia (J) : 0.1685 sq.ft.lb
 Duty cycle : Cont.(S1)
 Insulation class : F
 Service factor : 1.15
 Temperature rise : 80 K
 Design : A

Locked rotor time : 57s (cold) 32s (hot)

Rev.	Changes Summary	Performed	Checked	Date
Performed by			Page 4 / 10	Revision
Checked by				
Date	14/04/2022			

LOAD PERFORMANCE CURVE

Three Phase Induction Motor - Squirrel Cage



Customer : _____

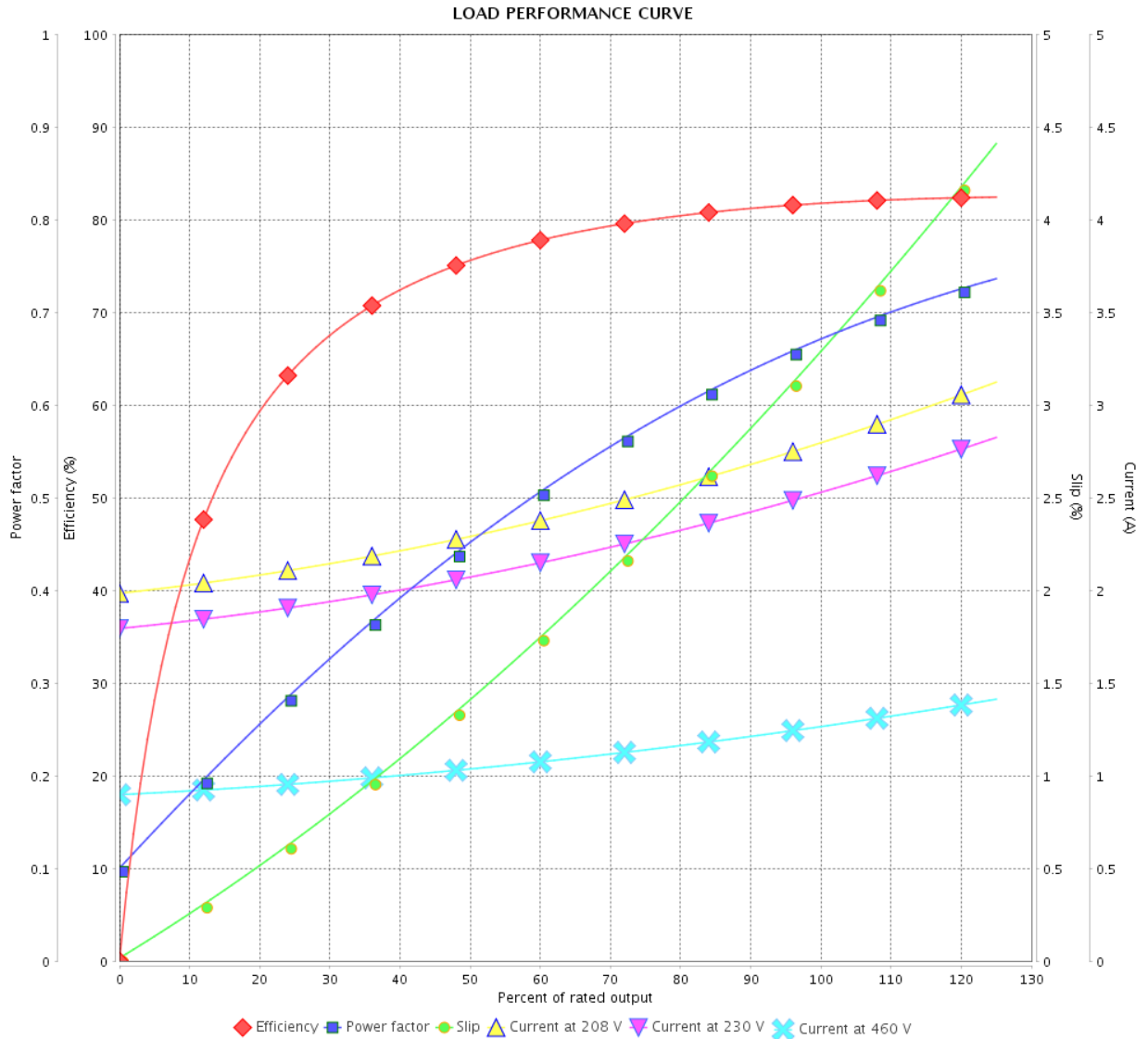
Product line : Premium Efficiency Three-Phase

Product code :

13617169

Catalog # :

.7512OT3E56-S



Performance : 208-230/460 V 60 Hz 6P

Rated current : 2.78-2.52/1.26 A
 LRC : 5.9
 Rated torque : 3.40 ft.lb
 Locked rotor torque : 220 %
 Breakdown torque : 280 %
 Rated speed : 1160 rpm

Moment of inertia (J) : 0.1685 sq.ft.lb
 Duty cycle : Cont.(S1)
 Insulation class : F
 Service factor :
 Temperature rise : 80 K
 Design : A

Rev.	Changes Summary	Performed	Checked	Date
Performed by			Page	Revision
Checked by				
Date				

LOAD PERFORMANCE CURVE

Three Phase Induction Motor - Squirrel Cage



Customer :

Product line : Premium Efficiency Three-Phase

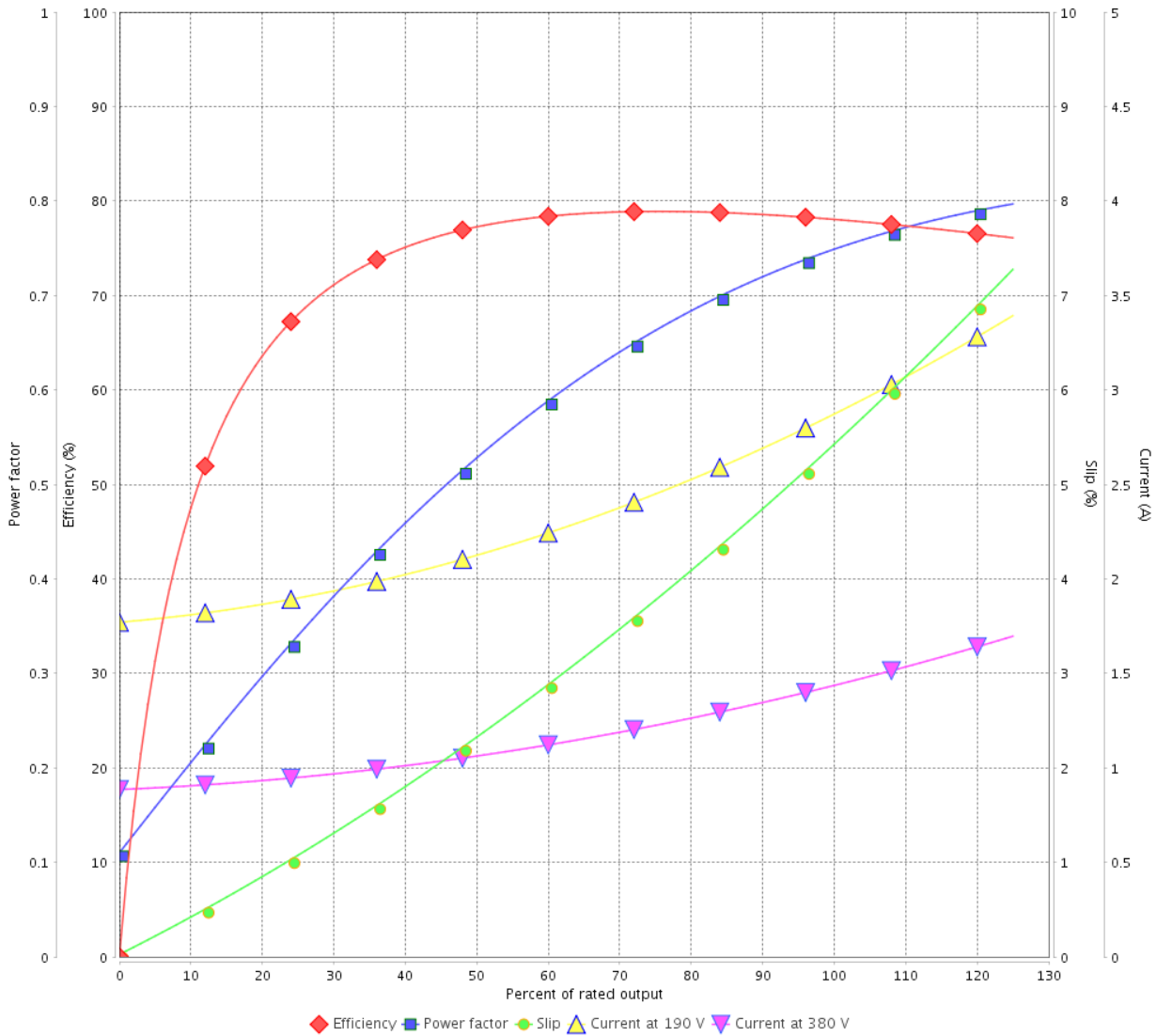
Product code :

13617169

Catalog # :

.7512OT3E56-S

LOAD PERFORMANCE CURVE



Performance : 190/380 V 50 Hz 6P

Rated current : 2.86/1.43 A
 LRC : 4.6
 Rated torque : 4.17 ft.lb
 Locked rotor torque : 170 %
 Breakdown torque : 229 %
 Rated speed : 945 rpm

Moment of inertia (J) : 0.1685 sq.ft.lb
 Duty cycle : Cont.(S1)
 Insulation class : F
 Service factor : 1.15
 Temperature rise : 80 K
 Design : A

Rev.	Changes Summary	Performed	Checked	Date
Performed by			Page	Revision
Checked by				
Date				

LOAD PERFORMANCE CURVE

Three Phase Induction Motor - Squirrel Cage



Customer : _____

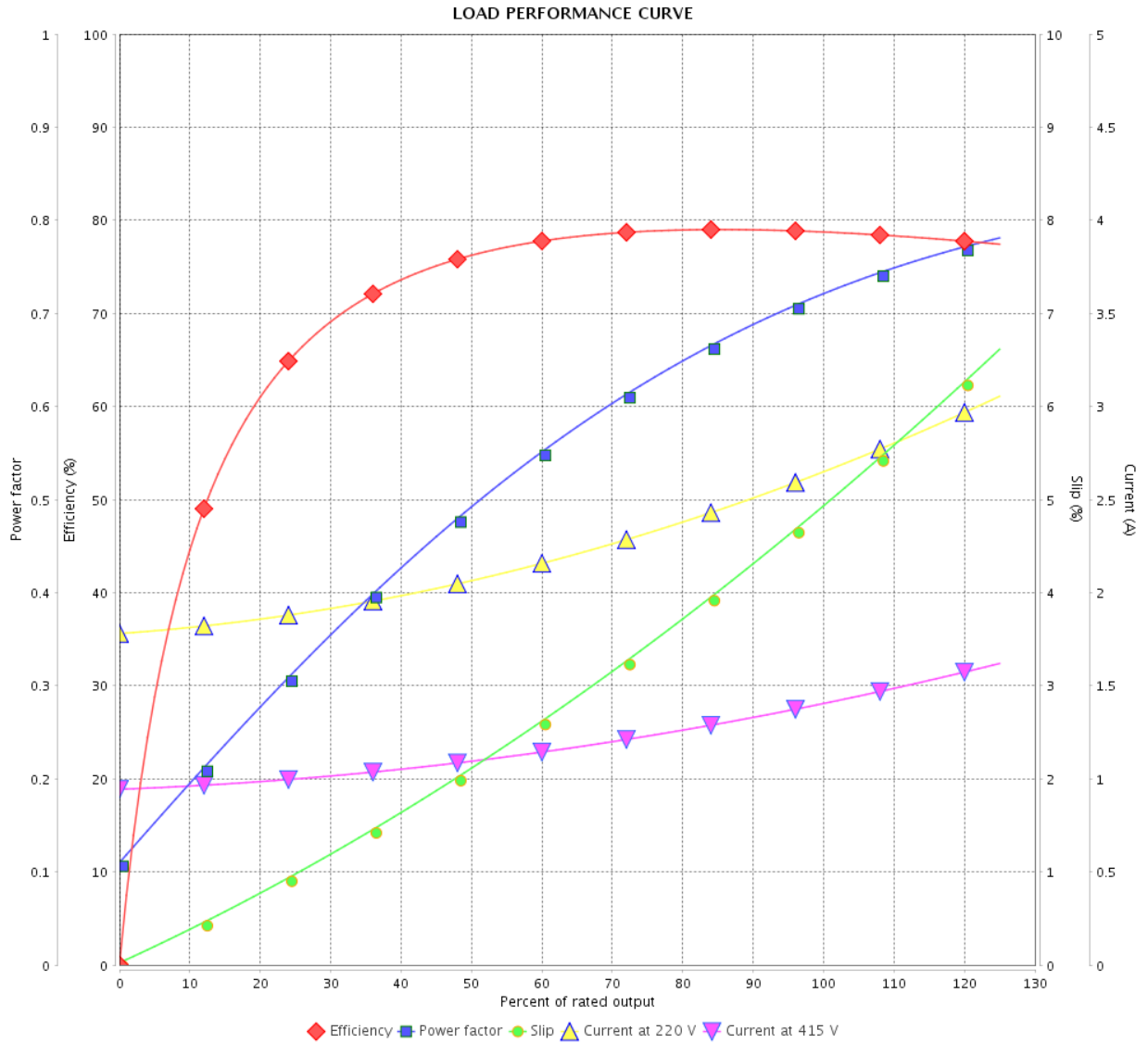
Product line : Premium Efficiency Three-Phase

Product code :

13617169

Catalog # :

.7512OT3E56-S



Performance : 220/415 V 50 Hz 6P

Rated current : 2.64/1.40 A
 LRC : 5.0
 Rated torque : 4.15 ft.lb
 Locked rotor torque : 200 %
 Breakdown torque : 260 %
 Rated speed : 950 rpm

Moment of inertia (J) : 0.1685 sq.ft.lb
 Duty cycle : Cont.(S1)
 Insulation class : F
 Service factor : 1.15
 Temperature rise : 80 K
 Design : A

Rev.	Changes Summary	Performed	Checked	Date
Performed by		Page		Revision
Checked by		7 / 10		
Date		14/04/2022		

THERMAL LIMIT CURVE

Three Phase Induction Motor - Squirrel Cage

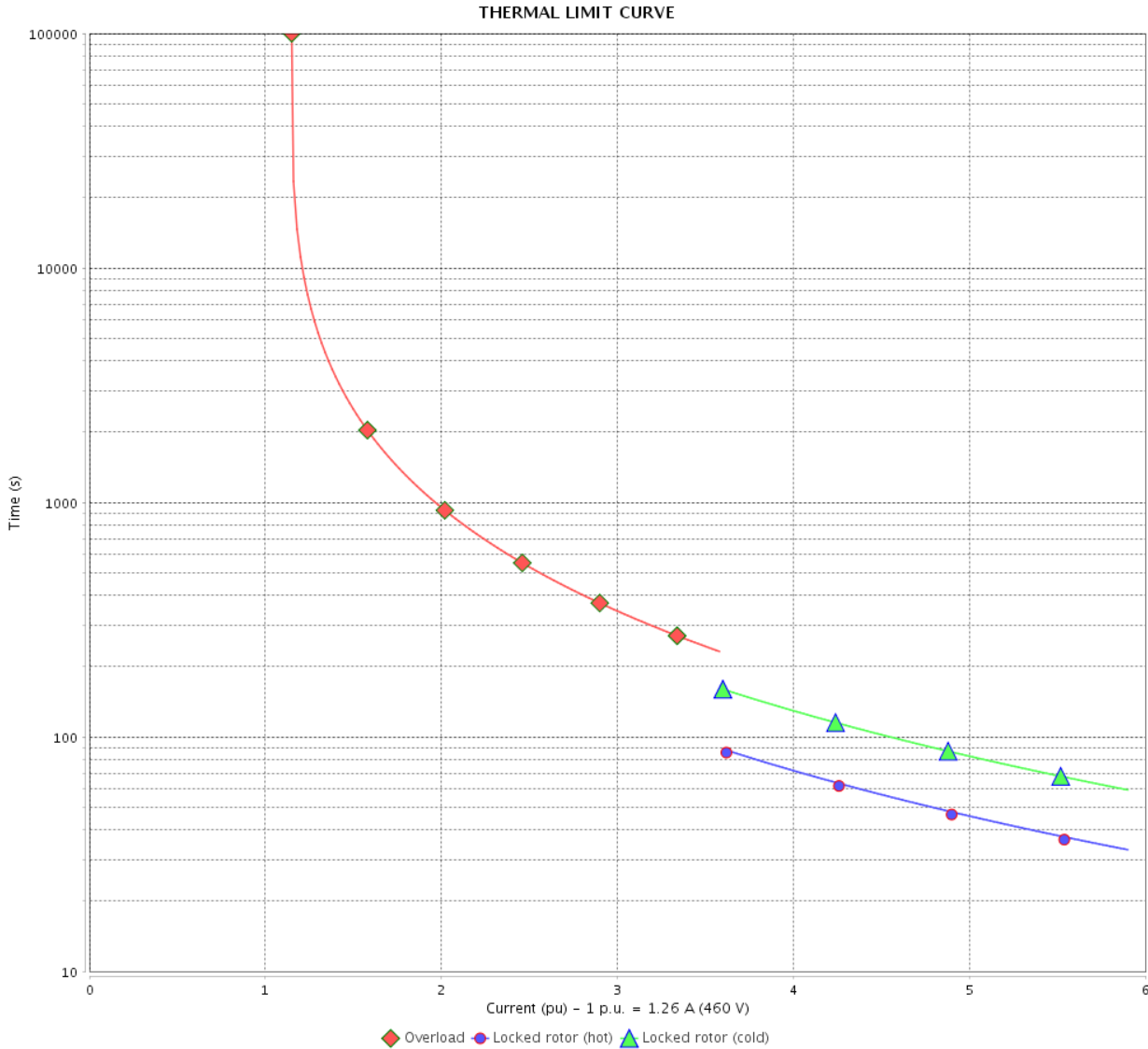


Customer : _____

Product line : Premium Efficiency Three-Phase

Product code : 13617169

Catalog # : .7512OT3E56-S



Performance : 208-230/460 V 60 Hz 6P

Rated current : 2.78-2.52/1.26 A
 LRC : 5.9
 Rated torque : 3.40 ft.lb
 Locked rotor torque : 220 %
 Breakdown torque : 280 %
 Rated speed : 1160 rpm

Moment of inertia (J) : 0.1685 sq.ft.lb
 Duty cycle : Cont.(S1)
 Insulation class : F
 Service factor :
 Temperature rise : 80 K
 Design : A

Heating constant

Cooling constant

Rev.	Changes Summary	Performed	Checked	Date
Performed by	14/04/2022	Page		Revision
Checked by		8 / 10		
Date				

THERMAL LIMIT CURVE

Three Phase Induction Motor - Squirrel Cage



Customer : _____

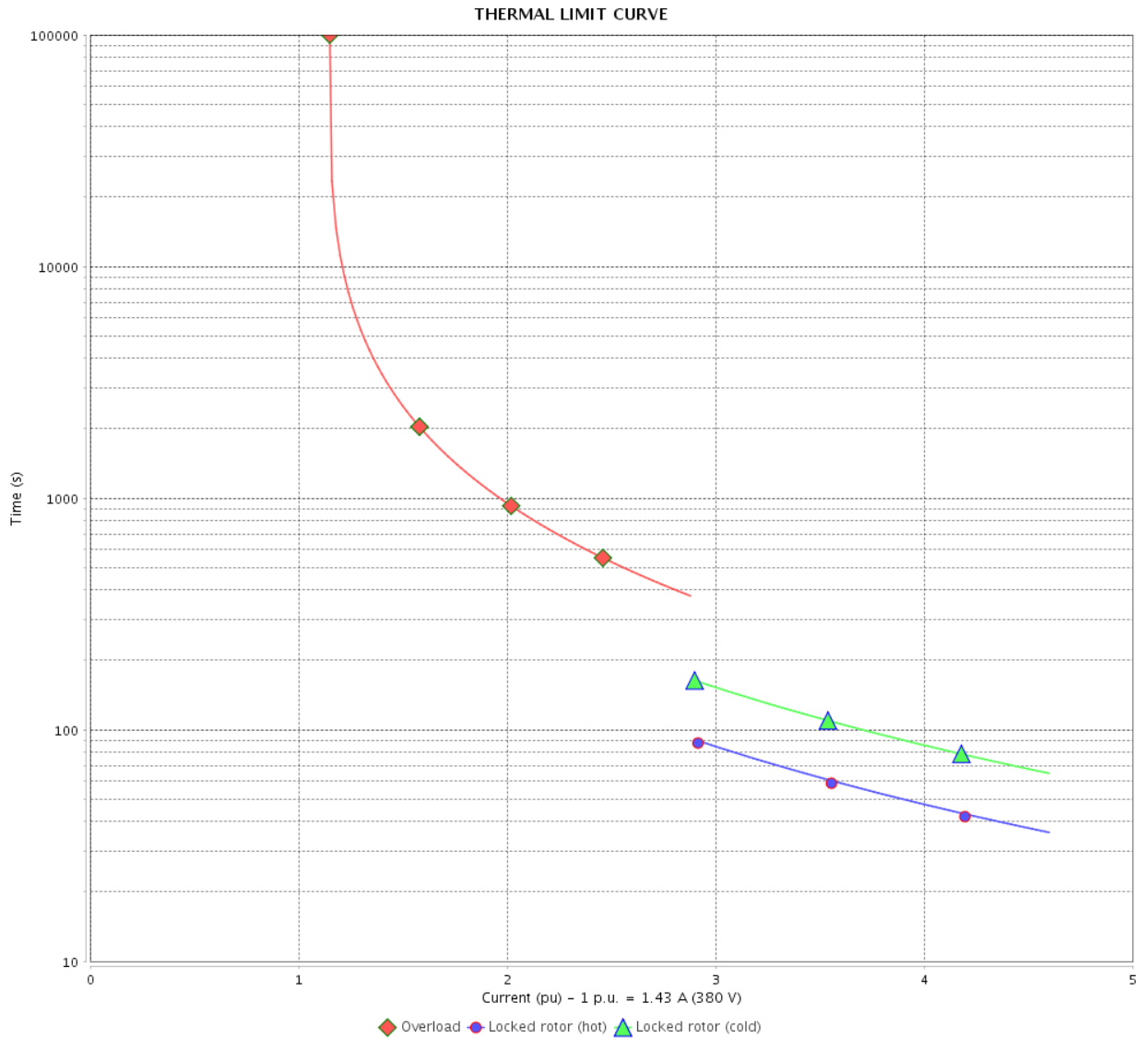
Product line : Premium Efficiency Three-Phase

Product code :

13617169

Catalog # :

.7512OT3E56-S



Performance : 190/380 V 50 Hz 6P

Rated current : 2.86/1.43 A
 LRC : 4.6
 Rated torque : 4.17 ft.lb
 Locked rotor torque : 170 %
 Breakdown torque : 229 %
 Rated speed : 945 rpm

Moment of inertia (J) : 0.1685 sq.ft.lb
 Duty cycle : Cont.(S1)
 Insulation class : F
 Service factor : 1.15
 Temperature rise : 80 K
 Design : A

Heating constant

Cooling constant

Rev.	Changes Summary	Performed	Checked	Date
Performed by			Page	Revision
Checked by				
Date				

THERMAL LIMIT CURVE

Three Phase Induction Motor - Squirrel Cage

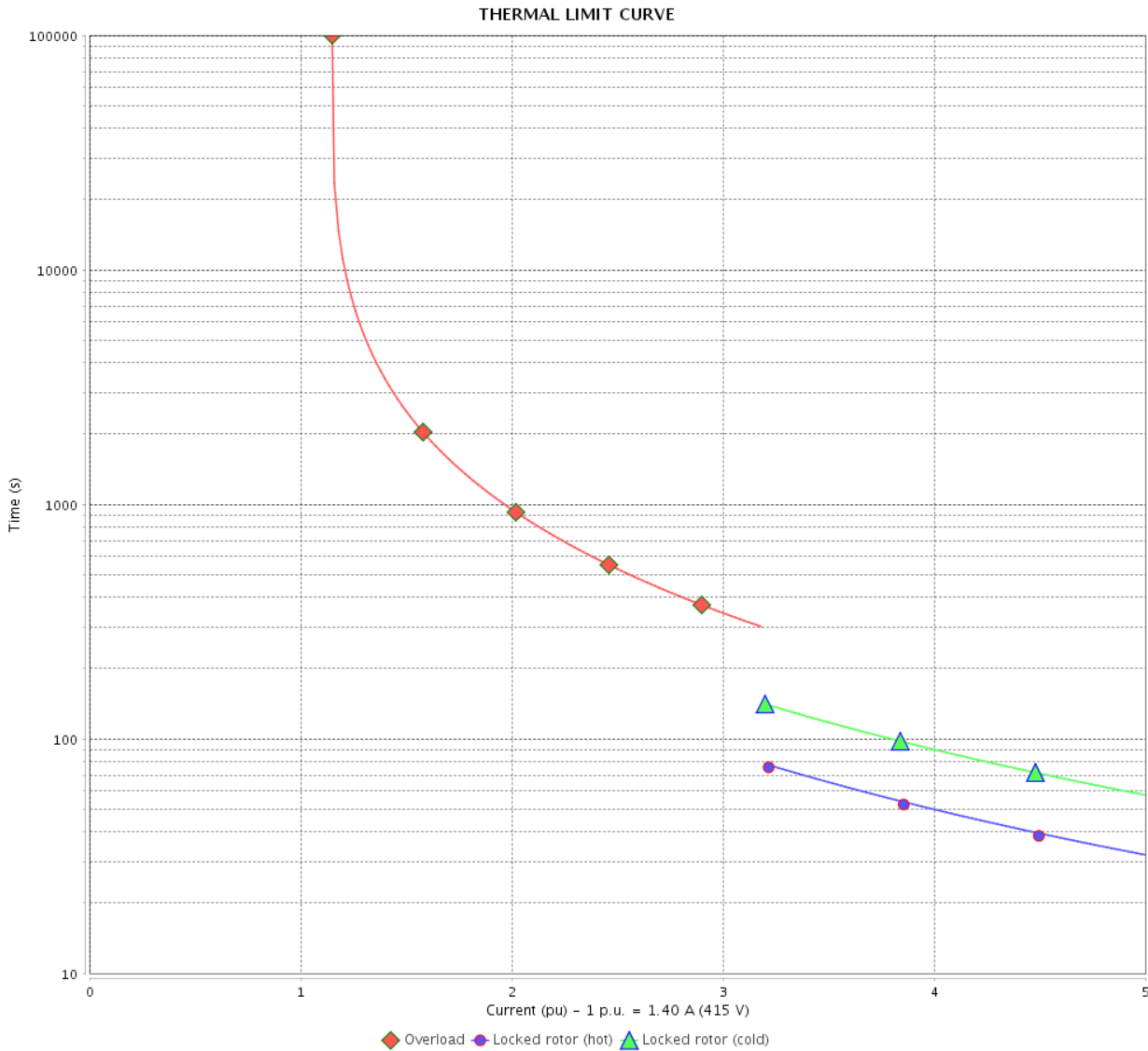


Customer : _____

Product line : Premium Efficiency Three-Phase

Product code : 13617169

Catalog # : .7512OT3E56-S



Performance : 220/415 V 50 Hz 6P

Rated current : 2.64/1.40 A
 LRC : 5.0
 Rated torque : 4.15 ft.lb
 Locked rotor torque : 200 %
 Breakdown torque : 260 %
 Rated speed : 950 rpm

Moment of inertia (J) : 0.1685 sq.ft.lb
 Duty cycle : Cont.(S1)
 Insulation class : F
 Service factor : 1.15
 Temperature rise : 80 K
 Design : A

Heating constant

Cooling constant

Rev.	Changes Summary	Performed	Checked	Date
Performed by		Page		Revision
Checked by				
Date				

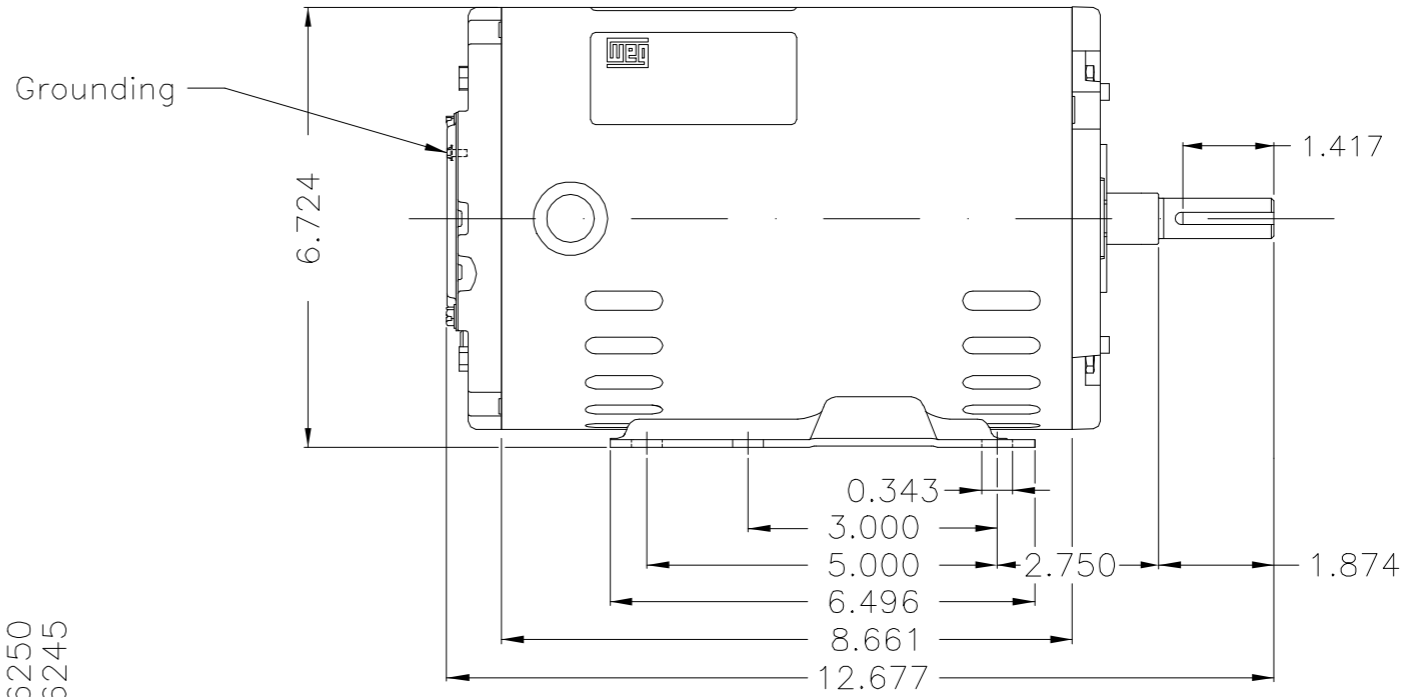
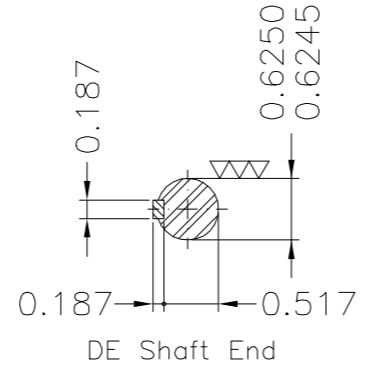
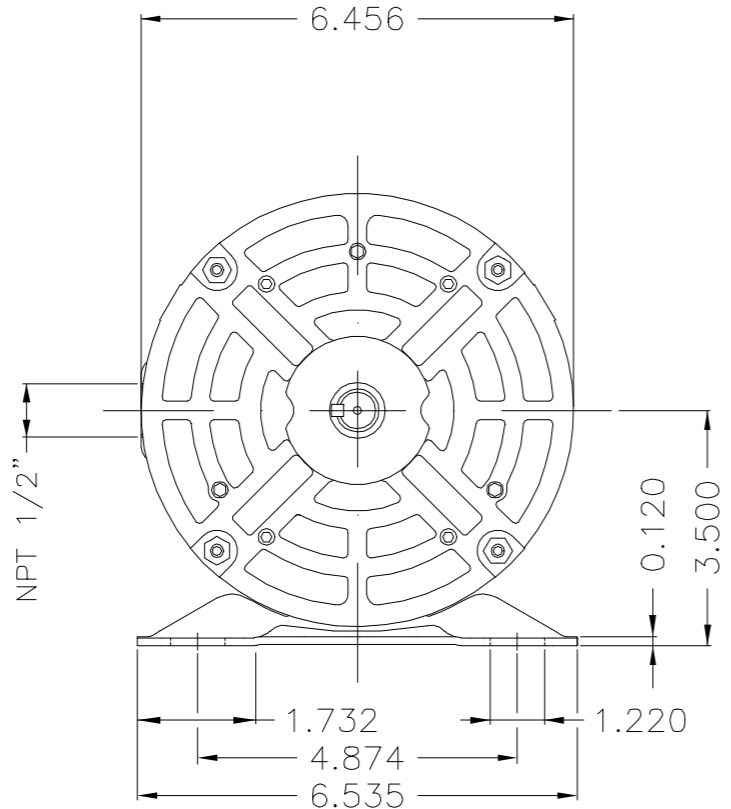
EJE/SHAFT	
ESTÁNDAR/STANDARD	X
OPCIONAL/OPTIONAL	
ESPECIAL/SPECIAL	

Dimensões em polegada
Dimensions in inches

DOCUMENTO PRELIMINAR
No debe ser utilizado para fines de instalación

THIS IS AN UPDATED REVISION, THE PREVIOUS ONE MUST BE DISREGARDED.

A
B
C
D
E



Rodamiento delantero 6204 ZZ y trasero 6202 ZZ / 6204 ZZ D.E. and 6202 ZZ N.D.E. ball bearing
Forma constructiva F-1/B3R(D) / Mounting F-1/B3R(D)
WEG ELECTRIC CORPORATION - WEC

OV: 4070999

No MODIFICACION ECM	LOC LOC	RESUMEN DE MODIFICACIONES SUMMARY OF MODIFICATIONS	EJECUTADO EXECUTED	VERIFICADO CHECKED	LIBERADO RELEASED	FECHA DATE	VER VER
EJEC. /EXECUTED	CESTRELLA	THREE PHASE ODP ROLLED STEEL PREM. EFF.					
VERIF. /CHECKED		FRAME 56H ODP					
LIBER. /RELEASED	MARIAN						
FECHA LB/REL DT	12.05.2016	WMX Huehuetoca	Product Engineering				

500001176120	DOCUMENTO NOVO	CESTRELLA	MARIAN	12.05.2016	00
10004278036		000 00			

0.75 HP 06 Poles 60Hz 414273738/0

COPIA SIN CONTROL
LIBERADO
ZME A3



NEMA
Premium



3PT9



Energy Verified

MADE IN MEXICO

MAT: 13617169
W01.T00IC0X0X
MODEL 75120T3E56-S
17MAR2022 B/N:



PH 3	Hz 60	HP 0.75
FR 56H		KW 0.55
DUTY CONT.		V 230/460
ALT 1000 m.a.s.l.		A 2.52/1.26
INS CL F AT 80K		SFA 2.90/1.45
AMB 40°C	DES A	SF 1.15
ENCL ODP	CODE J	PF 0.67
USABLE @ 208V 2.78A		RPM 1160
SF1.00		AVG.F.L. 81.7% EFF.

ALTERNATE RATING: 0.75HP 50Hz 190-220/380-415V SF1.15
2.86-2.82/1.43-1.39A 945RPM EFF 78.0% (IE3) IEC 60034-1

Inverter duty motor For 80Hz use on VPWM 1000:1 VT, 5:1 CT

DE 6204-ZZ	ODE 6202-ZZ	MOBIL POLYREX EM
------------	-------------	------------------



T1-BLU T2-WHT
T3-ORG T4-YEL
T5-BLK T6-GRY
T7-PNK T8-RED
T9-BRK RED

INTERCHANGE ANY TWO LINE WIRES TO REVERSE THE ROTATION

WARNING: Motor must be grounded in accordance with local and national electrical codes to prevent serious electrical shocks. Disconnect power source before servicing unit.



AVERTISSEMENT: Le moteur doit être mis à la terre

conformément aux codes électriques locaux et nationaux afin d'éviter tout choc électrique grave. Déconnectez l'alimentation avant l'entretien de la machine.

