

DATA SHEET



Three Phase Induction Motor - Squirrel Cage

Customer :				
Product line	: Standard Efficiency Three-Phase			
Product code :	14786498			
Catalog # :	.7518ES3H56CFL-S			
Frame : 56C Output : 0.75 HP (0.550 kW) Poles : 4 Frequency : 60 Hz Rated voltage : 575 V Rated current : 0.976 A L. R. Amperes : 6.73 A LRC : 6.9x(Code K) No load current : 0.720 A Rated speed : 1755 rpm Slip : 2.50 % Rated torque : 2.24 ft.lb Locked rotor torque : 240 % Breakdown torque : 300 % Insulation class : F Service factor : 1.15 Moment of inertia (J) : 0.0648 sq.ft.lb	Locked rotor time : 30s (cold) 17s (hot) Temperature rise : 80 K Duty cycle : Cont.(S1) Ambient temperature : -20°C to +40°C Altitude : 1000 m.a.s.l. Protection degree : IP55 Cooling method : IC411 - TEFC Mounting : F-1 Rotation ¹ : Both (CW and CCW) Noise level ² : 52.0 dB(A) Starting method : Direct On Line Approx. weight ³ : 23.0 lb			
Output	25% 50% 75% 100%			
Efficiency (%)	70.4 72.0 77.0 78.5			
Power Factor	0.26 0.48 0.61 0.72			
Foundation loads				
Max. traction : 54 lb				
Max. compression : 77 lb				
Bearing type	: <u>Drive end</u> 6203 ZZ <u>Non drive end</u> 6202 ZZ			
Sealing	: V'Ring Without Bearing Seal			
Lubrication interval	: - -			
Lubricant amount	: - -			
Lubricant type	: Mobil Polyrex EM			
Notes				
This revision replaces and cancel the previous one, which must be eliminated. (1) Looking the motor from the shaft end. (2) Measured at 1m and with tolerance of +3dB(A). (3) Approximate weight subject to changes after manufacturing process. (4) At 100% of full load.				
These are average values based on tests with sinusoidal power supply, subject to the tolerances stipulated in NEMA MG-1.				
Rev.	Changes Summary	Performed	Checked	Date
Performed by				
Checked by			Page	Revision
Date	11/04/2022		1 / 5	

TORQUE AND CURRENT VS SPEED CURVE

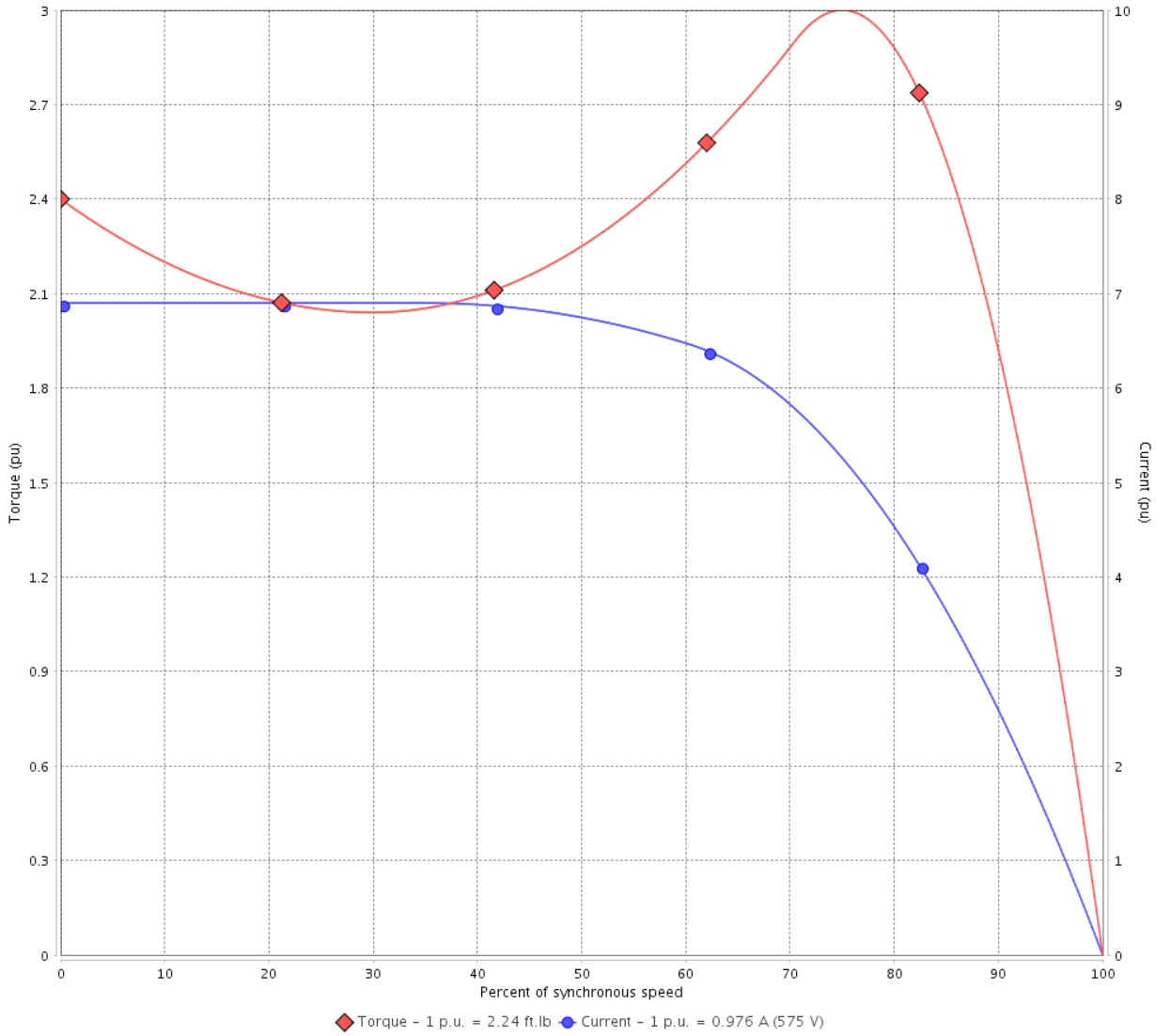
Three Phase Induction Motor - Squirrel Cage



Customer :

Product line : Standard Efficiency Three-Phase Product code : 14786498
 Catalog # : .7518ES3H56CFL-S

TORQUE AND CURRENT VS SPEED CURVE



Performance : 575 V 60 Hz 4P

Rated current	: 0.976 A	Moment of inertia (J)	: 0.0648 sq.ft.lb
LRC	: 6.9	Duty cycle	: Cont.(S1)
Rated torque	: 2.24 ft.lb	Insulation class	: F
Locked rotor torque	: 240 %	Service factor	: 1.15
Breakdown torque	: 300 %	Temperature rise	: 80 K
Rated speed	: 1755 rpm		

Locked rotor time : 30s (cold) 17s (hot)

Rev.	Changes Summary	Performed	Checked	Date
Performed by			Page 2 / 5	Revision
Checked by				
Date	11/04/2022			

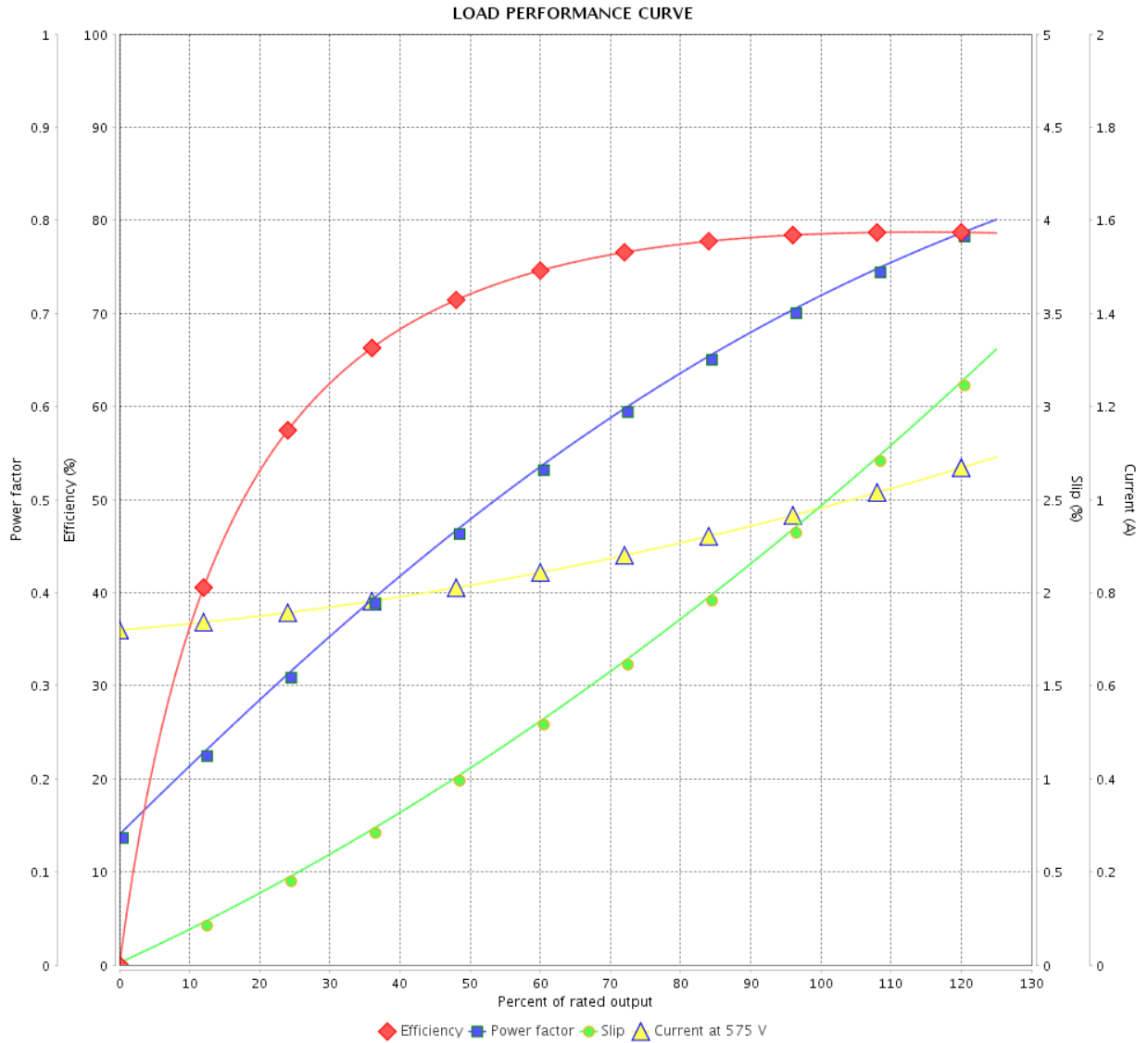
LOAD PERFORMANCE CURVE

Three Phase Induction Motor - Squirrel Cage



Customer : _____

Product line : Standard Efficiency Three-Phase Product code : 14786498
 Catalog # : .7518ES3H56CFL-S



Performance : 575 V 60 Hz 4P

Rated current : 0.976 A
 LRC : 6.9
 Rated torque : 2.24 ft.lb
 Locked rotor torque : 240 %
 Breakdown torque : 300 %
 Rated speed : 1755 rpm

Moment of inertia (J) : 0.0648 sq.ft.lb
 Duty cycle : Cont.(S1)
 Insulation class : F
 Service factor : 1.15
 Temperature rise : 80 K

Rev.	Changes Summary	Performed	Checked	Date
Performed by		Page		Revision
Checked by		3 / 5		
Date		11/04/2022		

THERMAL LIMIT CURVE

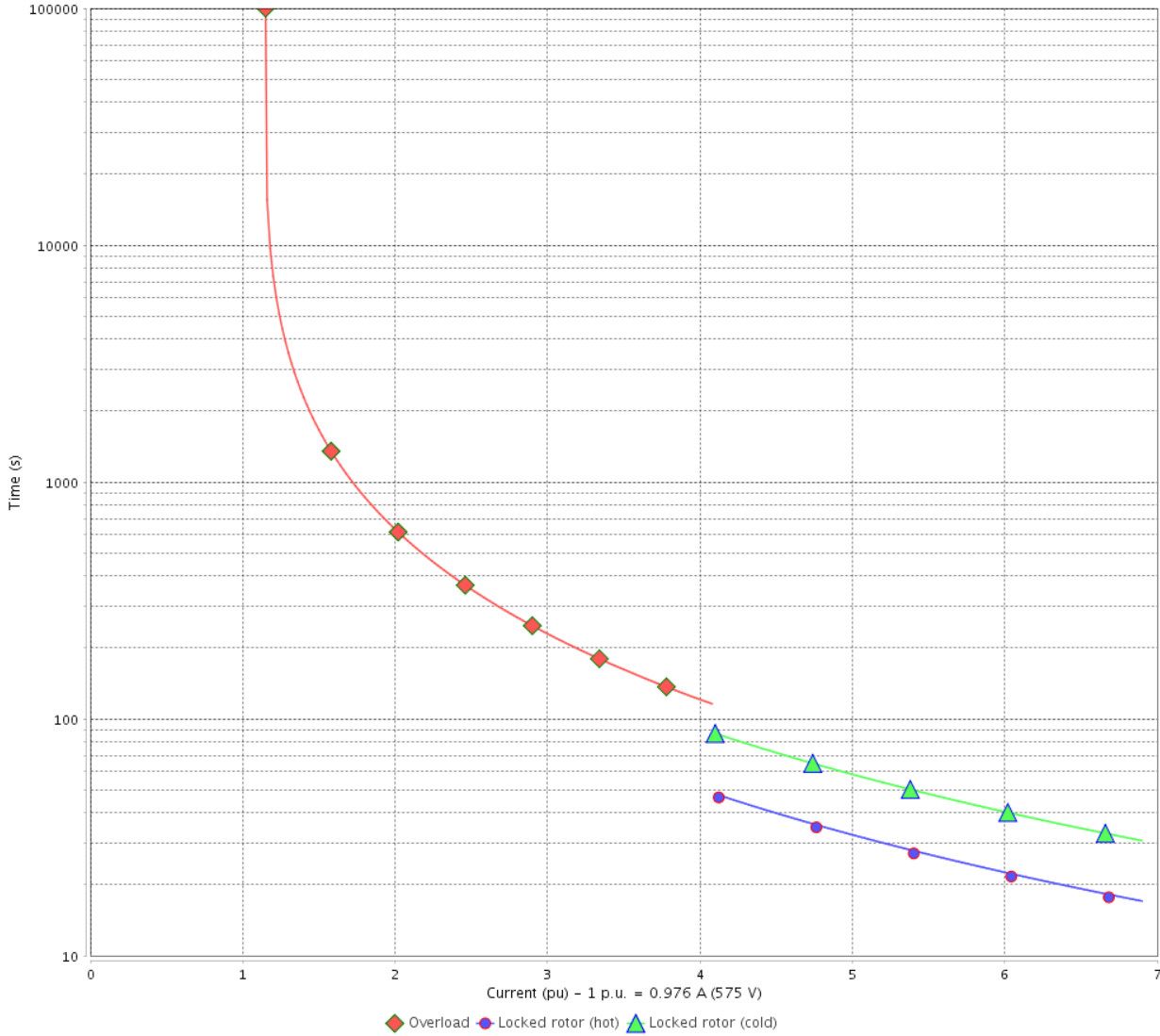
Three Phase Induction Motor - Squirrel Cage



Customer :

Product line : Standard Efficiency Three-Phase Product code : 14786498
 Catalog # : .7518ES3H56CFL-S

THERMAL LIMIT CURVE



Performance : 575 V 60 Hz 4P

Rated current	: 0.976 A	Moment of inertia (J)	: 0.0648 sq.ft.lb
LRC	: 6.9	Duty cycle	: Cont.(S1)
Rated torque	: 2.24 ft.lb	Insulation class	: F
Locked rotor torque	: 240 %	Service factor	: 1.15
Breakdown torque	: 300 %	Temperature rise	: 80 K
Rated speed	: 1755 rpm		

Heating constant

Cooling constant

Rev.	Changes Summary	Performed	Checked	Date
Performed by			Page 4 / 5	Revision
Checked by				
Date	11/04/2022			

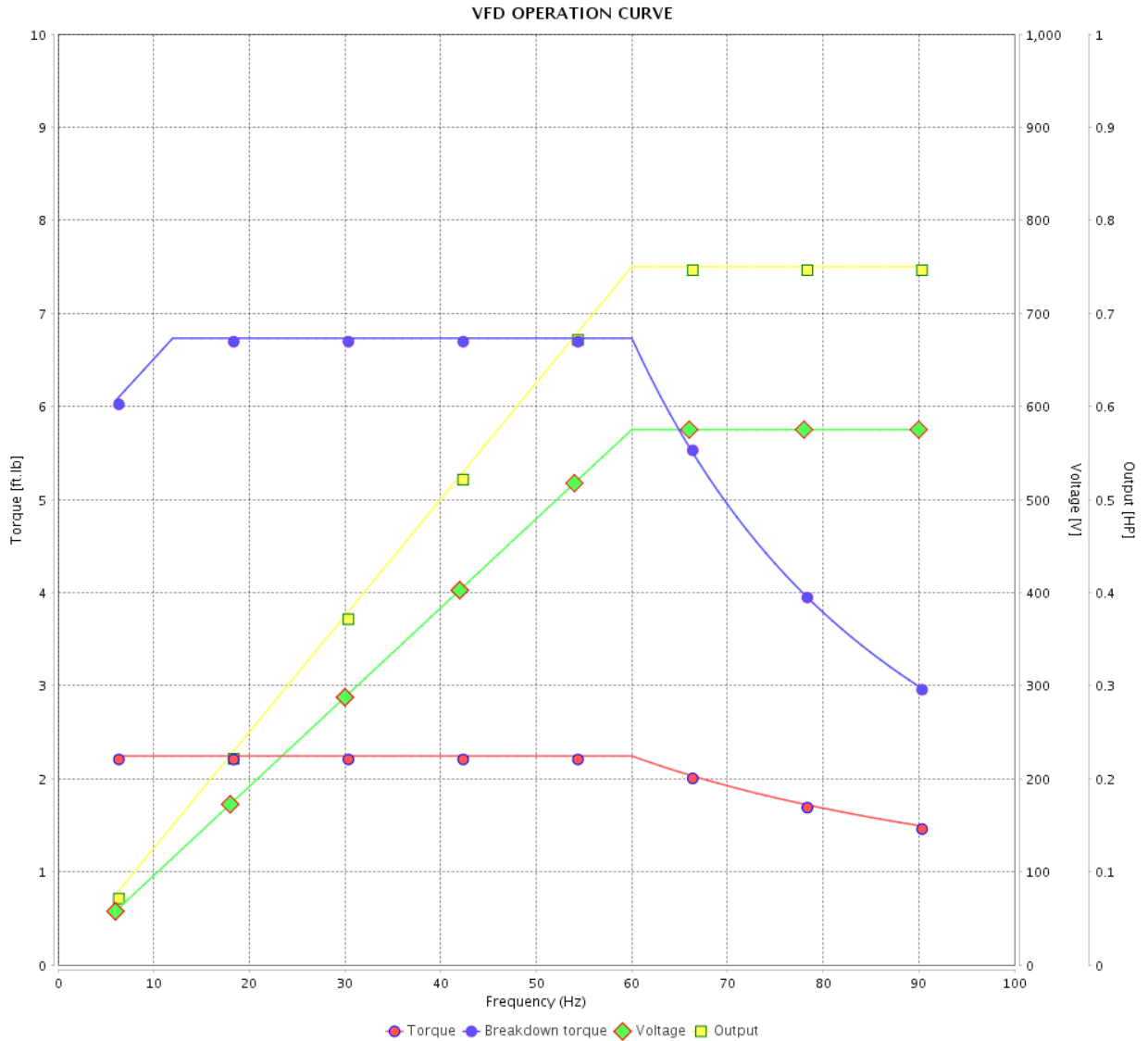
VFD OPERATION CURVE

Three Phase Induction Motor - Squirrel Cage



Customer : _____

Product line : Standard Efficiency Three-Phase Product code : 14786498
 Catalog # : .7518ES3H56CFL-S

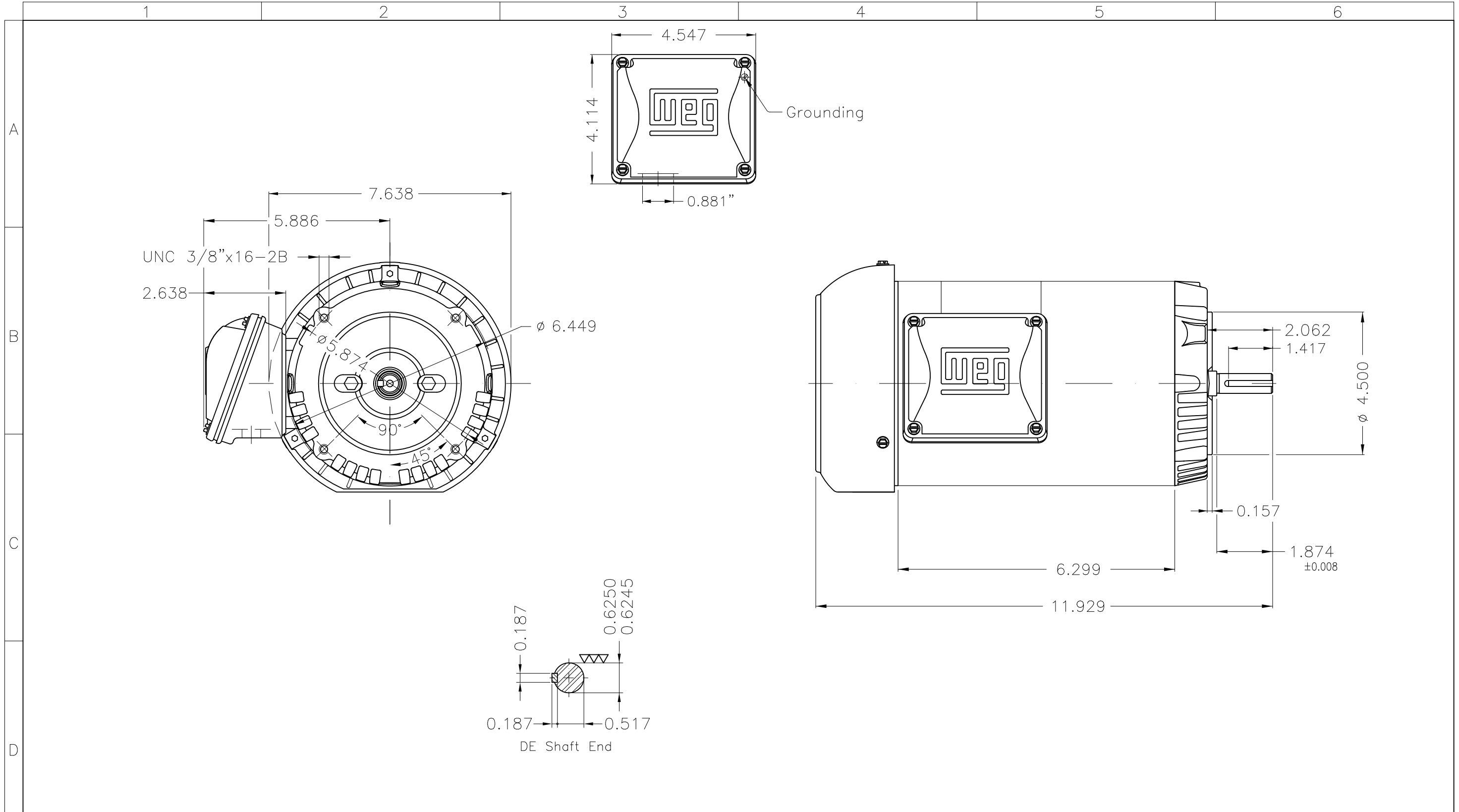


Performance : 575 V 60 Hz 4P

Rated current : 0.976 A
 LRC : 6.9
 Rated torque : 2.24 ft.lb
 Locked rotor torque : 240 %
 Breakdown torque : 300 %
 Rated speed : 1755 rpm

Moment of inertia (J) : 0.0648 sq.ft.lb
 Duty cycle : Cont.(S1)
 Insulation class : F
 Service factor : 1.15
 Temperature rise : 80 K

Rev.	Changes Summary	Performed	Checked	Date
Performed by			Page 5 / 5	Revision
Checked by				
Date	11/04/2022			



Dimensions in inches

Fan cover - steel plate						
Color Munsell N 1 matte black						
Painting plan 207N						
Mounting F-1/B14R(D)						

ECM	LOC	SUMMARY OF MODIFICATIONS	EXECUTED	CHECKED	RELEASED	DATE	VER
EXECUTED	PIRWUSER	THREE PH. MOTOR ROLLED STEEL					
CHECKED		FRAME 56C IP55 TEFC					
RELEASED							

PREVIEW
WDD



0.75 HP 04 Poles 60 Hz

A REL DT. WMO Jaragua do Sul Product Engineering SHEET 1 / 1



MADE IN MEXICO

MAT: 14786498

W01.TE0IC0X0X

MODEL 7518ES3H56CFL-S

24MAR2022 B/N:



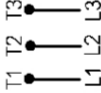
**For 60Hz: Class I, Zone 2, IIC
Class I, Div.2, Gr. A,B,C,D - T3
Div 2 Inverter Duty (SF1.00)**

CT 2:1/VT 1000:1

PH 3	Hz 60	HP 0.75
FR 56C		KW 0.55
DUTY CONT.		V 575
ALT 1000 m.a.s.l		A 0.976
INS CL F AT 80K	IP55	SFA 1.12
AMB 40°C	DES -	SF 1.15
ENCL TEFC	CODE K	PF 0.72
		RPM 1755
		NEMA NOM. EFF 78.5%

For safe area-inverter duty motor For use on VPWM 1000:1 VT, 10:1 CT

DE 6203-ZZ ODE 6202-ZZ MOBIL POLYREX EM



T1-BLU

T2-WHT

T3-ORG



INTERCHANGE ANY TWO LINE WIRES TO REVERSE THE ROTATION

WARNING: Motor must be grounded in accordance with local and national electrical codes to prevent serious electrical shocks. Disconnect power source before servicing unit.



AVERTISSEMENT: Le moteur doit être mis à la terre

conformément aux codes électriques locaux et nationaux afin d'éviter tout choc électrique grave. Déconnectez l'alimentation avant l'entretien de la machine.

