

DATA SHEET



Three Phase Induction Motor - Squirrel Cage

Customer :						
Product line		: Premium Efficiency Three-Phase		Product code : 13315188		
				Catalog # : .7518OT3H56-S		
Frame : 56 Output : 0.75 HP (0.550 kW) Poles : 4 Frequency : 60 Hz Rated voltage : 575 V Rated current : 0.920 A L. R. Amperes : 6.72 A LRC : 7.3x(Code K) No load current : 0.640 A Rated speed : 1760 rpm Slip : 2.22 % Rated torque : 2.24 ft.lb Locked rotor torque : 250 % Breakdown torque : 300 % Insulation class : F Service factor : 1.25 Moment of inertia (J) : 0.0712 sq.ft.lb			Locked rotor time : 37s (cold) 21s (hot) Temperature rise : 80 K Duty cycle : Cont.(S1) Ambient temperature : -20°C to +40°C Altitude : 1000 m.a.s.l. Cooling method : IC01 - ODP Mounting : F-1 Rotation ¹ : Both (CW and CCW) Noise level ² : 52.0 dB(A) Starting method : Direct On Line Approx. weight ³ : 23.4 lb			
Output		25%	50%	75%	100%	
Efficiency (%)		71.6	74.0	78.5	81.1	
Power Factor		0.29	0.52	0.65	0.74	
Foundation loads						
Max. traction : 54 lb						
Max. compression : 77 lb						
		<u>Drive end</u>		<u>Non drive end</u>		
Bearing type		: 6203 ZZ		: 6202 ZZ		
Sealing		: Without Bearing Seal		: Without Bearing Seal		
Lubrication interval		: -		: -		
Lubricant amount		: -		: -		
Lubricant type		: Mobil Polyrex EM				
Notes						
This revision replaces and cancel the previous one, which must be eliminated. (1) Looking the motor from the shaft end. (2) Measured at 1m and with tolerance of +3dB(A). (3) Approximate weight subject to changes after manufacturing process. (4) At 100% of full load.			These are average values based on tests with sinusoidal power supply, subject to the tolerances stipulated in NEMA MG-1.			
Rev.	Changes Summary			Performed	Checked	Date
Performed by						
Checked by					Page	Revision
Date	11/04/2022				1 / 5	

TORQUE AND CURRENT VS SPEED CURVE

Three Phase Induction Motor - Squirrel Cage



Customer :

Product line : Premium Efficiency Three-Phase

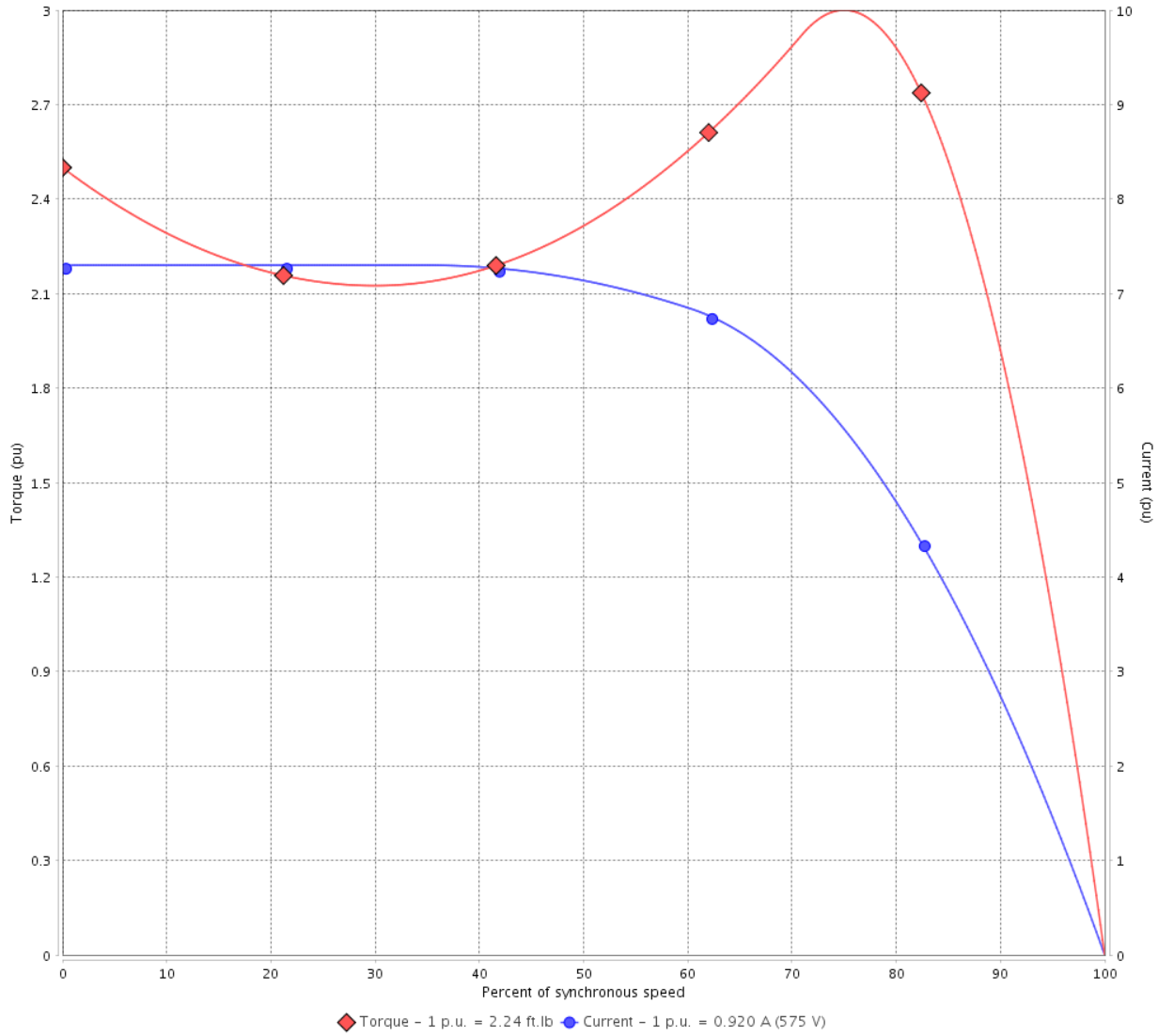
Product code :

13315188

Catalog # :

.7518OT3H56-S

TORQUE AND CURRENT VS SPEED CURVE



Performance : 575 V 60 Hz 4P

Rated current : 0.920 A
 LRC : 7.3
 Rated torque : 2.24 ft.lb
 Locked rotor torque : 250 %
 Breakdown torque : 300 %
 Rated speed : 1760 rpm

Moment of inertia (J) : 0.0712 sq.ft.lb
 Duty cycle : Cont.(S1)
 Insulation class : F
 Service factor : 1.25
 Temperature rise : 80 K

Locked rotor time : 37s (cold) 21s (hot)

Rev.	Changes Summary	Performed	Checked	Date
Performed by			Page 2 / 5	Revision
Checked by				
Date	11/04/2022			

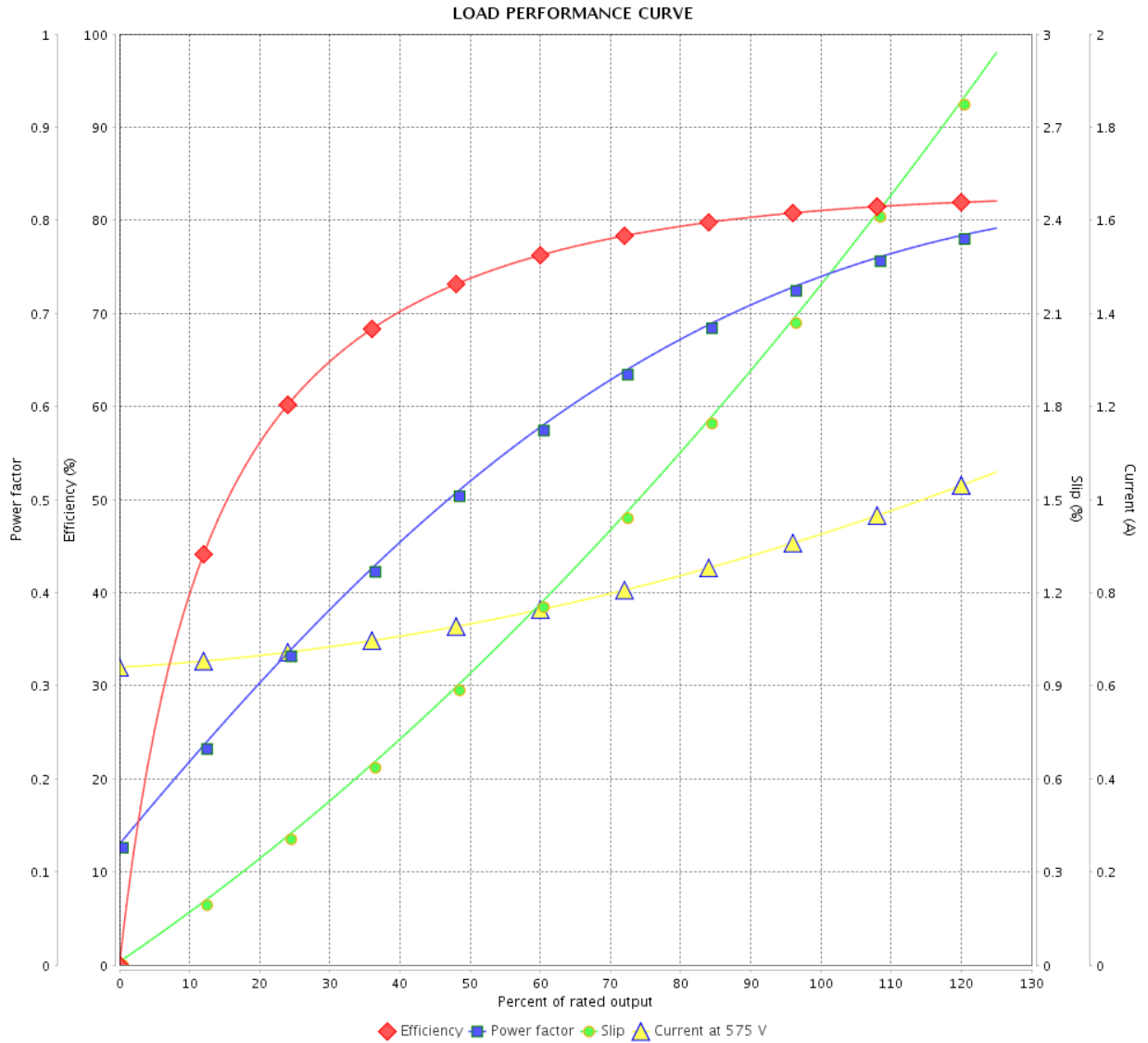
LOAD PERFORMANCE CURVE

Three Phase Induction Motor - Squirrel Cage



Customer : _____

Product line : Premium Efficiency Three-Phase Product code : 13315188
 Catalog # : .7518OT3H56-S



Performance : 575 V 60 Hz 4P

Rated current : 0.920 A
 LRC : 7.3
 Rated torque : 2.24 ft.lb
 Locked rotor torque : 250 %
 Breakdown torque : 300 %
 Rated speed : 1760 rpm

Moment of inertia (J) : 0.0712 sq.ft.lb
 Duty cycle : Cont.(S1)
 Insulation class : F
 Service factor : 1.25
 Temperature rise : 80 K

Rev.	Changes Summary	Performed	Checked	Date
Performed by			Page	Revision
Checked by				
Date				

THERMAL LIMIT CURVE

Three Phase Induction Motor - Squirrel Cage



Customer : _____

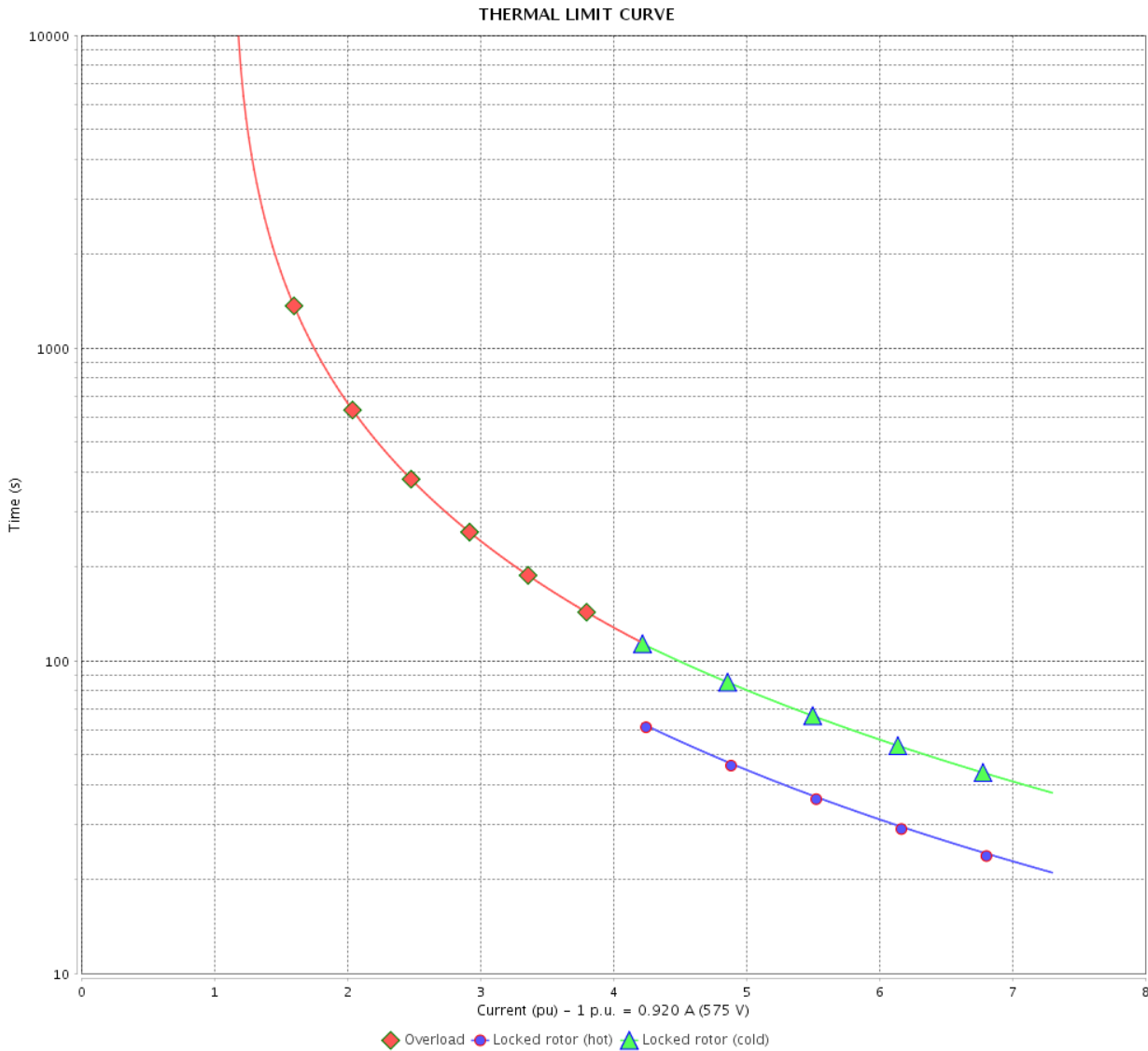
Product line : Premium Efficiency Three-Phase

Product code :

13315188

Catalog # :

.7518OT3H56-S



Performance : 575 V 60 Hz 4P

Rated current : 0.920 A
 LRC : 7.3
 Rated torque : 2.24 ft.lb
 Locked rotor torque : 250 %
 Breakdown torque : 300 %
 Rated speed : 1760 rpm

Moment of inertia (J) : 0.0712 sq.ft.lb
 Duty cycle : Cont.(S1)
 Insulation class : F
 Service factor : 1.25
 Temperature rise : 80 K

Heating constant

Cooling constant

Rev.	Changes Summary	Performed	Checked	Date
Performed by	11/04/2022	Page 4 / 5		Revision
Checked by				
Date				

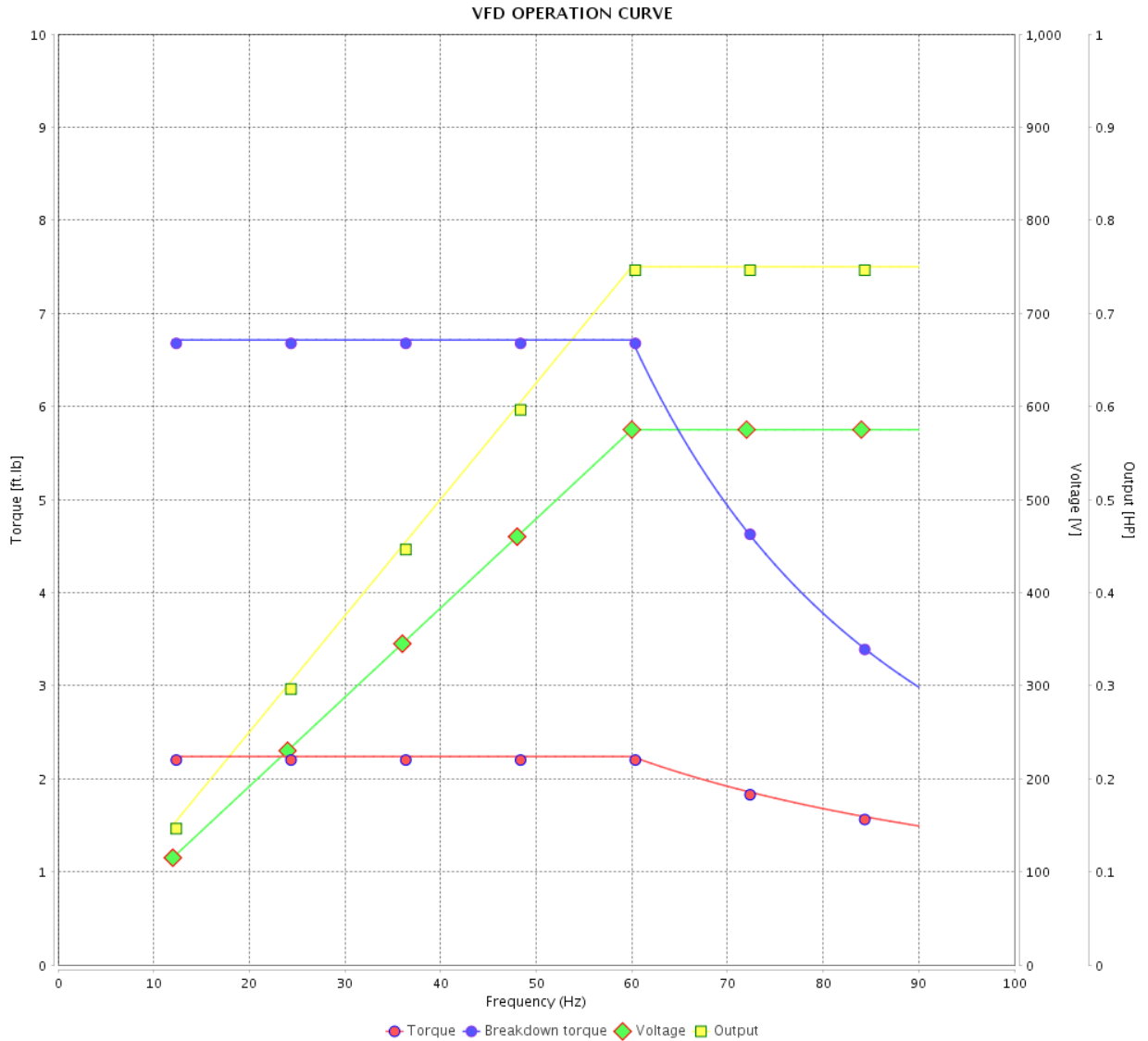
VFD OPERATION CURVE

Three Phase Induction Motor - Squirrel Cage



Customer : _____

Product line : Premium Efficiency Three-Phase Product code : 13315188
 Catalog # : .7518OT3H56-S



Performance : 575 V 60 Hz 4P

Rated current : 0.920 A
 LRC : 7.3
 Rated torque : 2.24 ft.lb
 Locked rotor torque : 250 %
 Breakdown torque : 300 %
 Rated speed : 1760 rpm

Moment of inertia (J) : 0.0712 sq.ft.lb
 Duty cycle : Cont.(S1)
 Insulation class : F
 Service factor : 1.25
 Temperature rise : 80 K

Rev.	Changes Summary	Performed	Checked	Date
Performed by			Page 5 / 5	Revision
Checked by				
Date	11/04/2022			

1 2 3 4 5 6

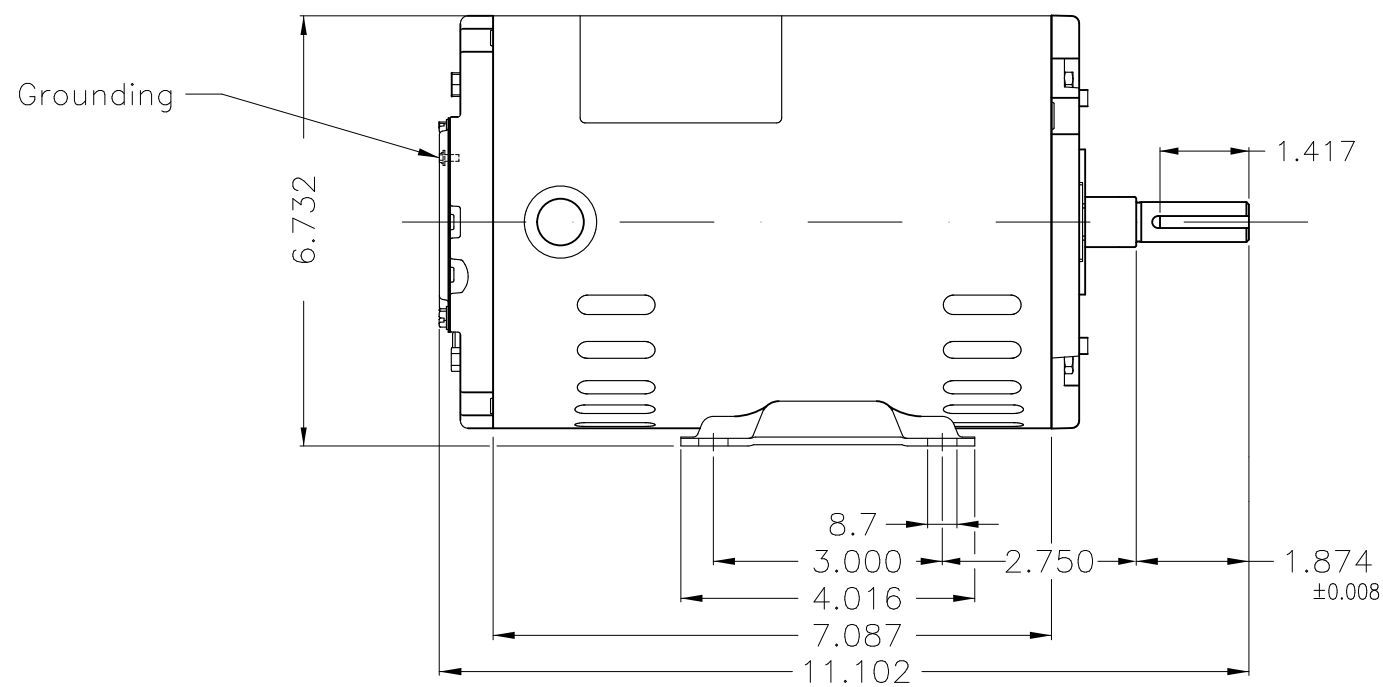
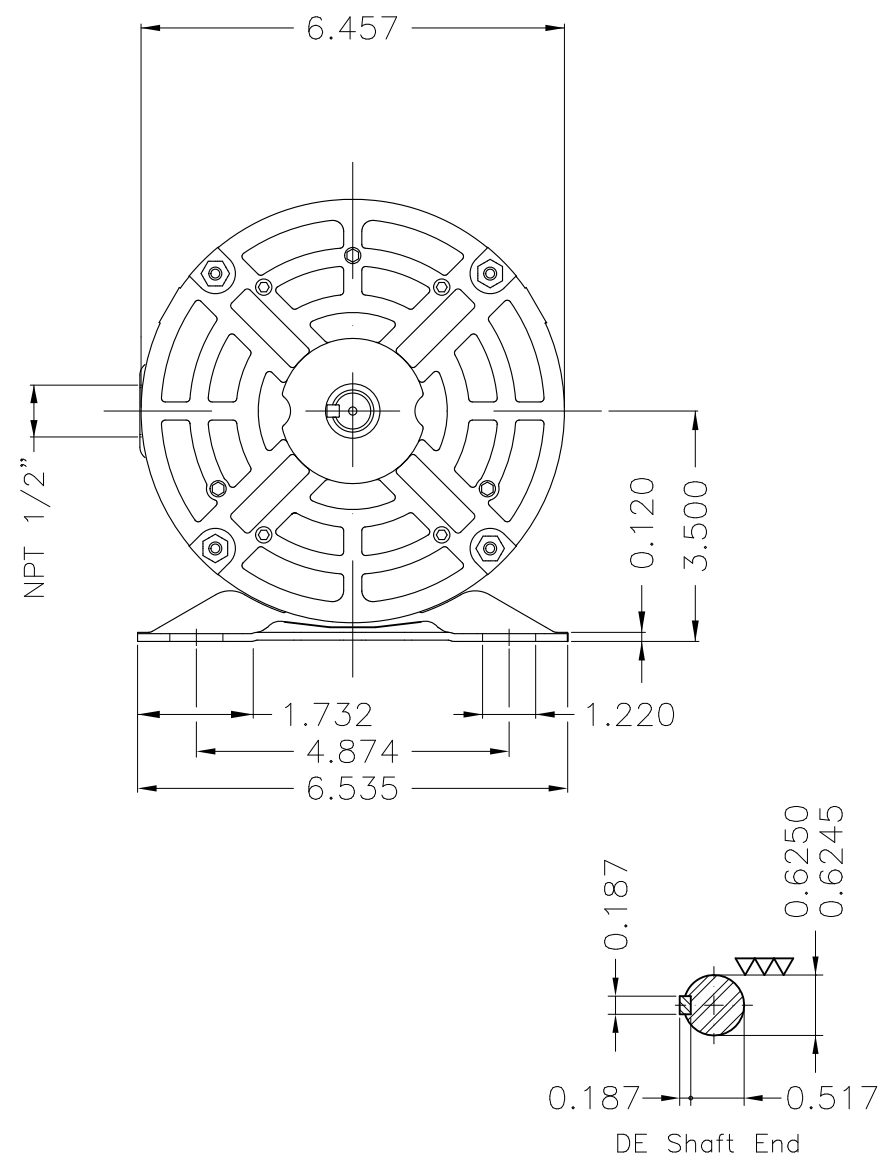
A

B

C

D

E



Without coating										
Mounting F-1/B3R(D)										
ECM	LOC	SUMMARY OF MODIFICATIONS				EXECUTED	CHECKED	RELEASED	DATE	VER
EXECUTED	PIRWUSER	THREE PH. MOTOR ROLLED STEEL PREM. EFF.				PREVIEW	WDD	SHEET	1 / 1	
CHECKED		FRAME 56 IP21 ODP								
RELEASED										
REL DT.		WMO	Jaragua do Sul	Product Engineering						

0.75 HP 04 Poles 60 Hz

A

WEG
NEMA
Premium3PT9
US LISTED

MADE IN BRAZIL

MAT: 13315188

W01.T00IC0X0X

MODEL .7518OT3H56-S

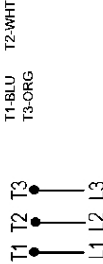
24JUL2018



PH 3	FR	56	HP(kW)	0.75(0.55)	Hz	60
V	575		RPM	1760		
A	0.920		DUTY CONT.			
SFA	1.15		CODE K	DES	-	
SF	1.25	INS CL F	ΔT	80K	AMB	40°C
ENCL	ODP					
ALT	1000	m.a.s.l.	AVG. F.L. EFF.	81.1%	PF	0.74

ALTERNATE RATING:

SEM IEC 60034-1



INTERCHANGE ANY TWO LINE WIRES TO REVERSE THE ROTATION

Inverter duty For use on VPWM 1000:1 VT, 5:1 CT

DE: 6203-ZZ ODE: 6202-ZZ MOBIL POLYREX EM

WARNING: Motor must be grounded in accordance with local and national electrical codes to prevent serious electrical shocks. Disconnect power source before servicing unit.

AVERTISSEMENT: Le moteur doit être mis à la terre conformément aux codes électriques locaux et nationaux afin d'éviter tout choc électrique grave. Déconnectez l'alimentation avant l'entretien de la machine.

