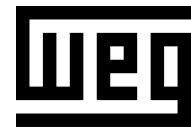


TORQUE AND CURRENT VS SPEED CURVE

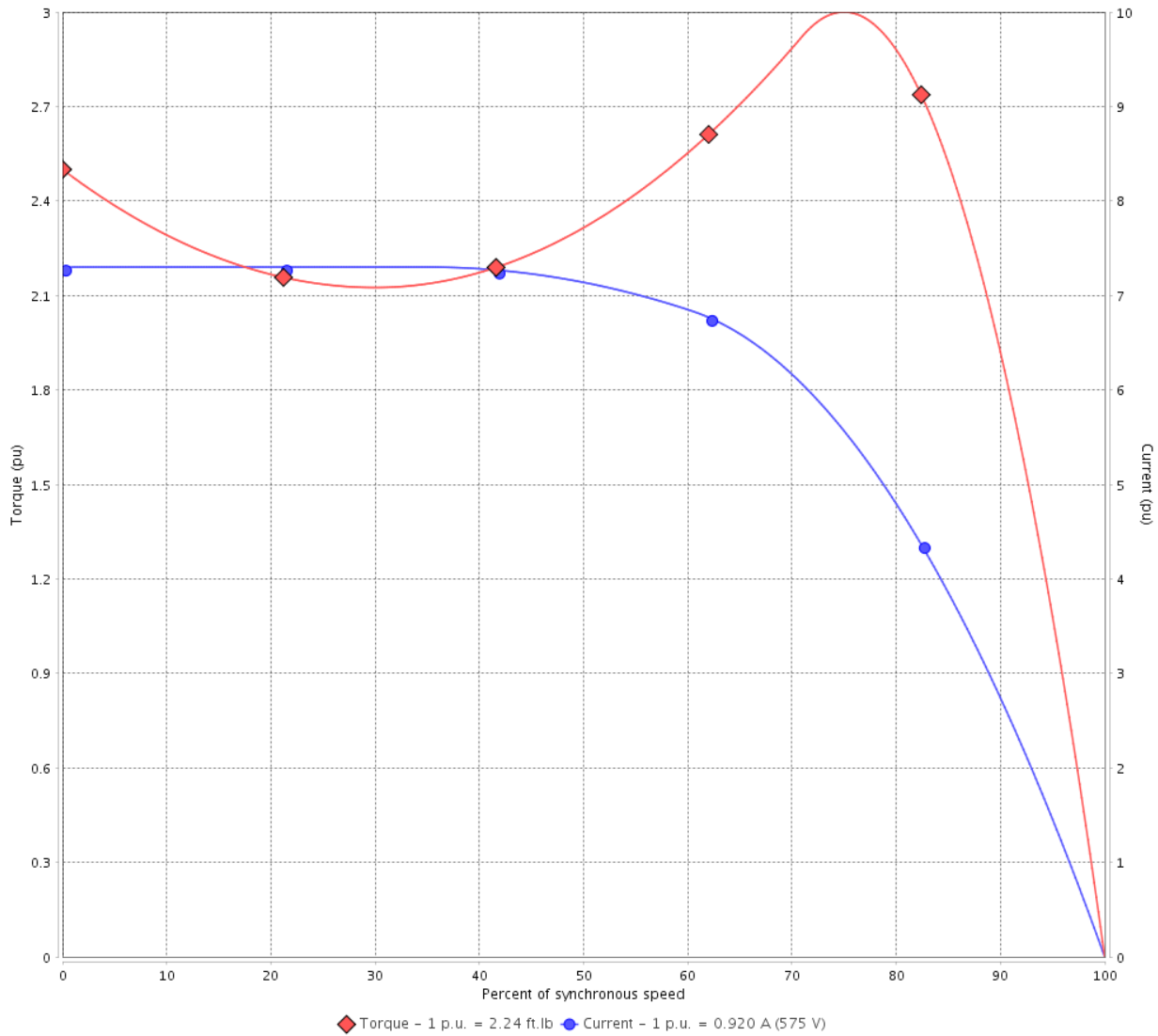
Three Phase Induction Motor - Squirrel Cage



Customer :

Product line : Premium Efficiency Three-Phase Product code : 12809255
 Catalog # : .7518OT3H56CFL-S

TORQUE AND CURRENT VS SPEED CURVE



Performance : 575 V 60 Hz 4P

Rated current	: 0.920 A	Moment of inertia (J)	: 0.0712 sq.ft.lb
LRC	: 7.3	Duty cycle	: Cont.(S1)
Rated torque	: 2.24 ft.lb	Insulation class	: F
Locked rotor torque	: 250 %	Service factor	: 1.25
Breakdown torque	: 300 %	Temperature rise	: 80 K
Rated speed	: 1760 rpm		

Locked rotor time : 37s (cold) 21s (hot)

Rev.	Changes Summary	Performed	Checked	Date
Performed by			Page 2 / 5	Revision
Checked by				
Date	14/04/2022			

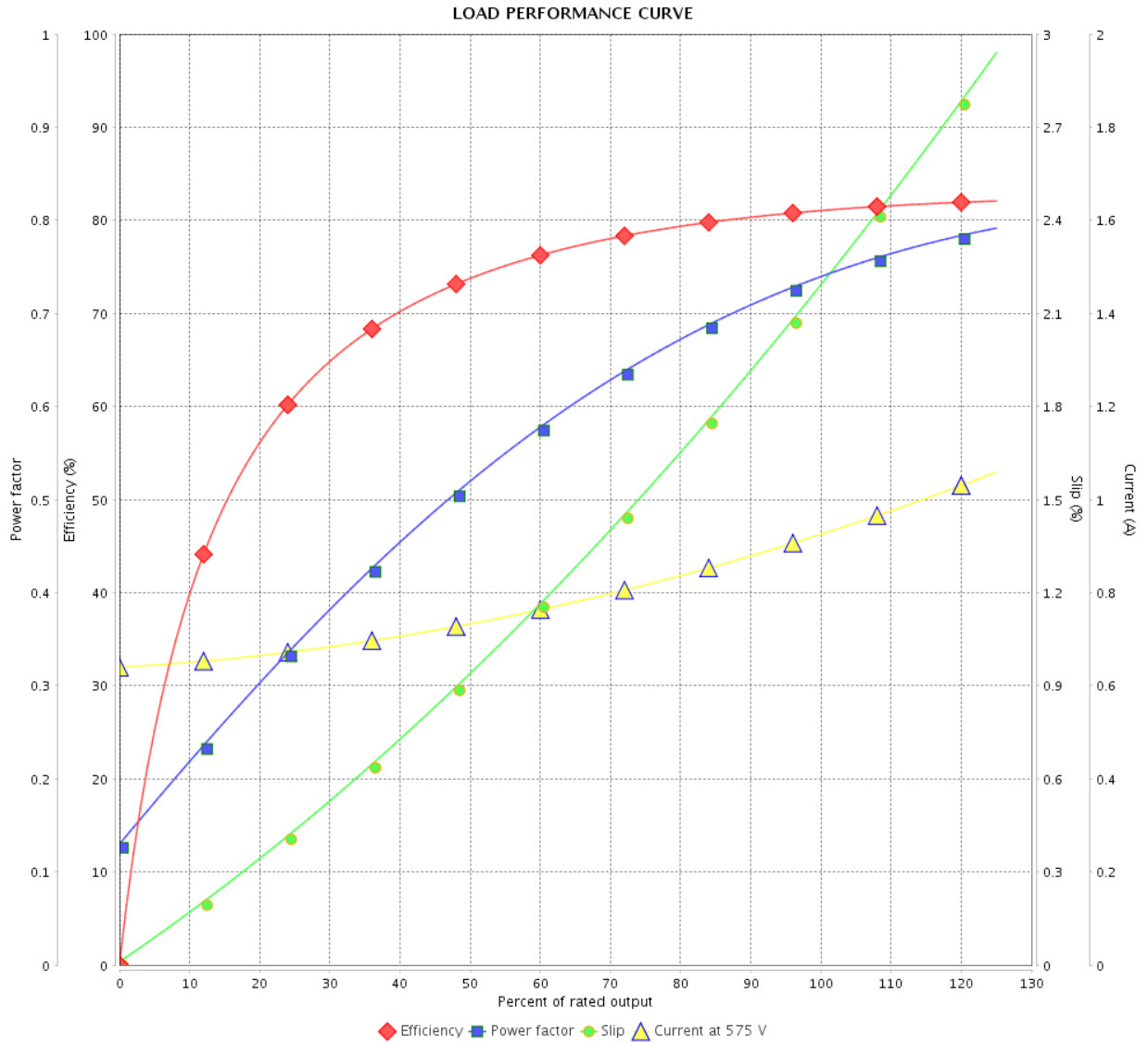
LOAD PERFORMANCE CURVE

Three Phase Induction Motor - Squirrel Cage



Customer : _____

Product line : Premium Efficiency Three-Phase Product code : 12809255
 Catalog # : .7518OT3H56CFL-S



Performance : 575 V 60 Hz 4P

Rated current : 0.920 A
 LRC : 7.3
 Rated torque : 2.24 ft.lb
 Locked rotor torque : 250 %
 Breakdown torque : 300 %
 Rated speed : 1760 rpm

Moment of inertia (J) : 0.0712 sq.ft.lb
 Duty cycle : Cont.(S1)
 Insulation class : F
 Service factor : 1.25
 Temperature rise : 80 K

Rev.	Changes Summary	Performed	Checked	Date
Performed by		Page		Revision
Checked by		3 / 5		
Date		14/04/2022		

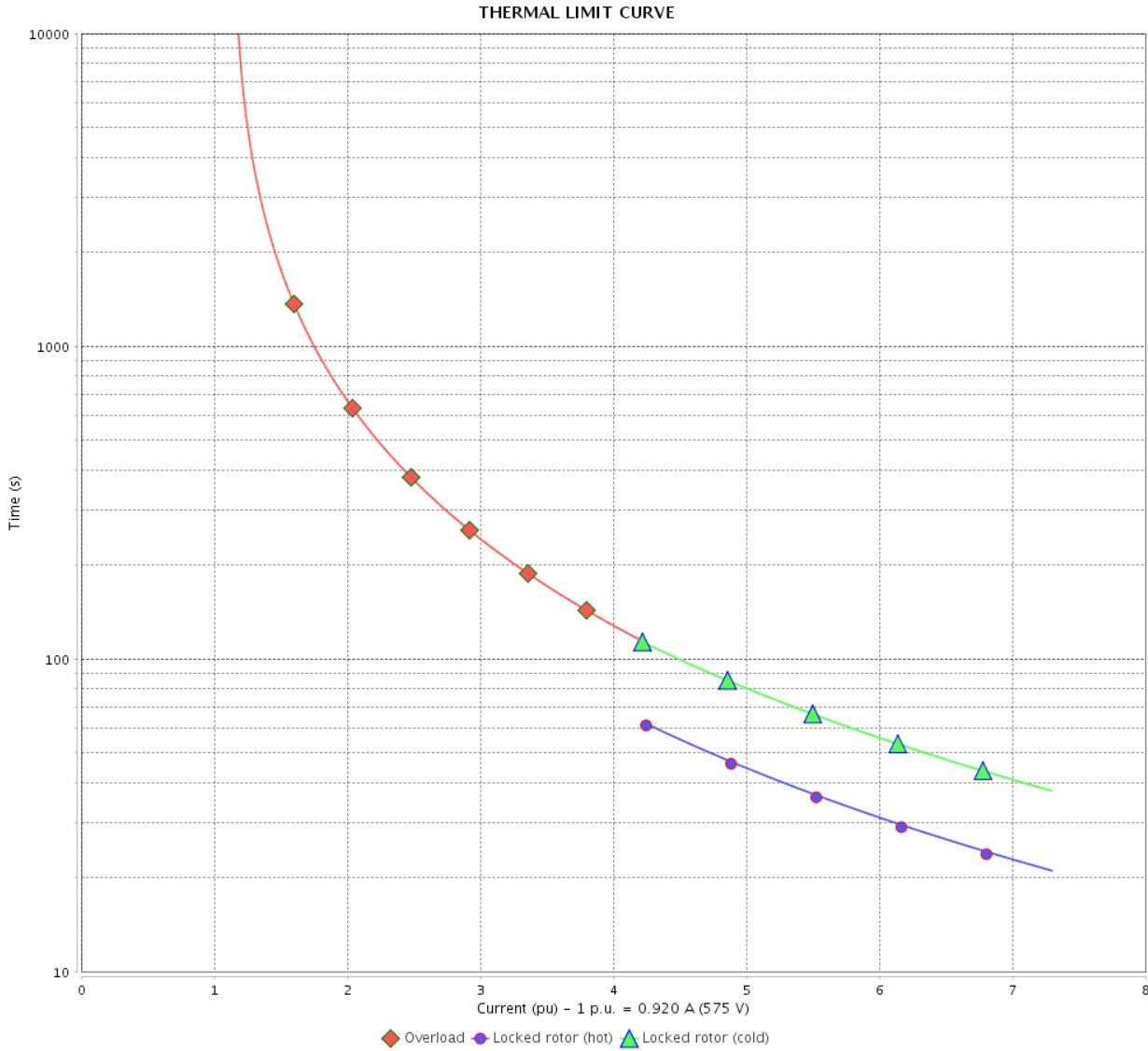
THERMAL LIMIT CURVE

Three Phase Induction Motor - Squirrel Cage



Customer : _____

Product line : Premium Efficiency Three-Phase Product code : 12809255
 Catalog # : .7518OT3H56CFL-S



Performance : 575 V 60 Hz 4P

Rated current	: 0.920 A	Moment of inertia (J)	: 0.0712 sq.ft.lb
LRC	: 7.3	Duty cycle	: Cont.(S1)
Rated torque	: 2.24 ft.lb	Insulation class	: F
Locked rotor torque	: 250 %	Service factor	: 1.25
Breakdown torque	: 300 %	Temperature rise	: 80 K
Rated speed	: 1760 rpm		

Heating constant

Cooling constant

Rev.	Changes Summary	Performed	Checked	Date
Performed by			Page 4 / 5	Revision
Checked by				
Date	14/04/2022			

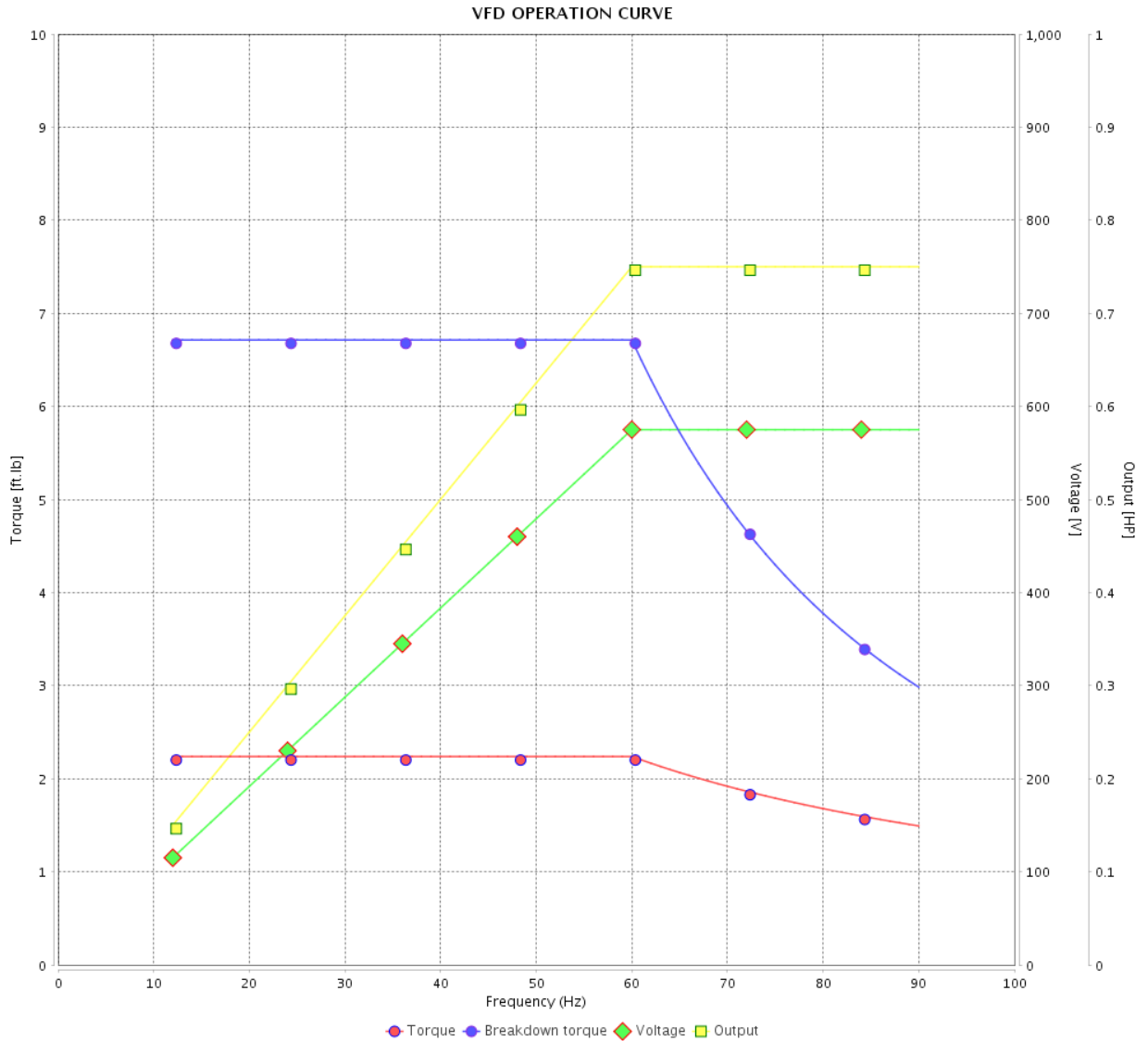
VFD OPERATION CURVE

Three Phase Induction Motor - Squirrel Cage



Customer : _____

Product line : Premium Efficiency Three-Phase Product code : 12809255
 Catalog # : .7518OT3H56CFL-S



Performance : 575 V 60 Hz 4P

Rated current : 0.920 A
 LRC : 7.3
 Rated torque : 2.24 ft.lb
 Locked rotor torque : 250 %
 Breakdown torque : 300 %
 Rated speed : 1760 rpm

Moment of inertia (J) : 0.0712 sq.ft.lb
 Duty cycle : Cont.(S1)
 Insulation class : F
 Service factor : 1.25
 Temperature rise : 80 K

Rev.	Changes Summary	Performed	Checked	Date
Performed by			Page 5 / 5	Revision
Checked by				
Date	14/04/2022			

1 2 3 4 5 6

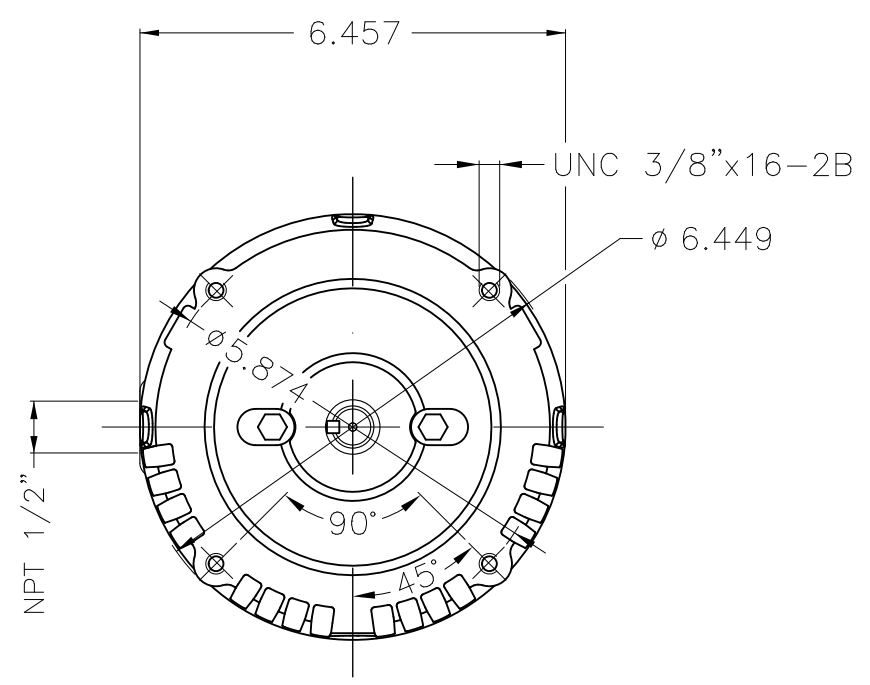
A

B

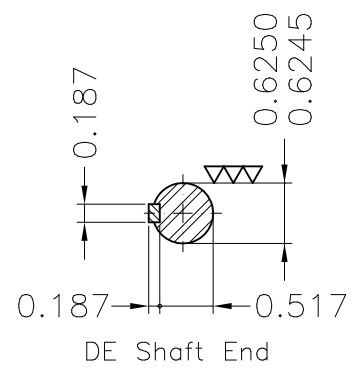
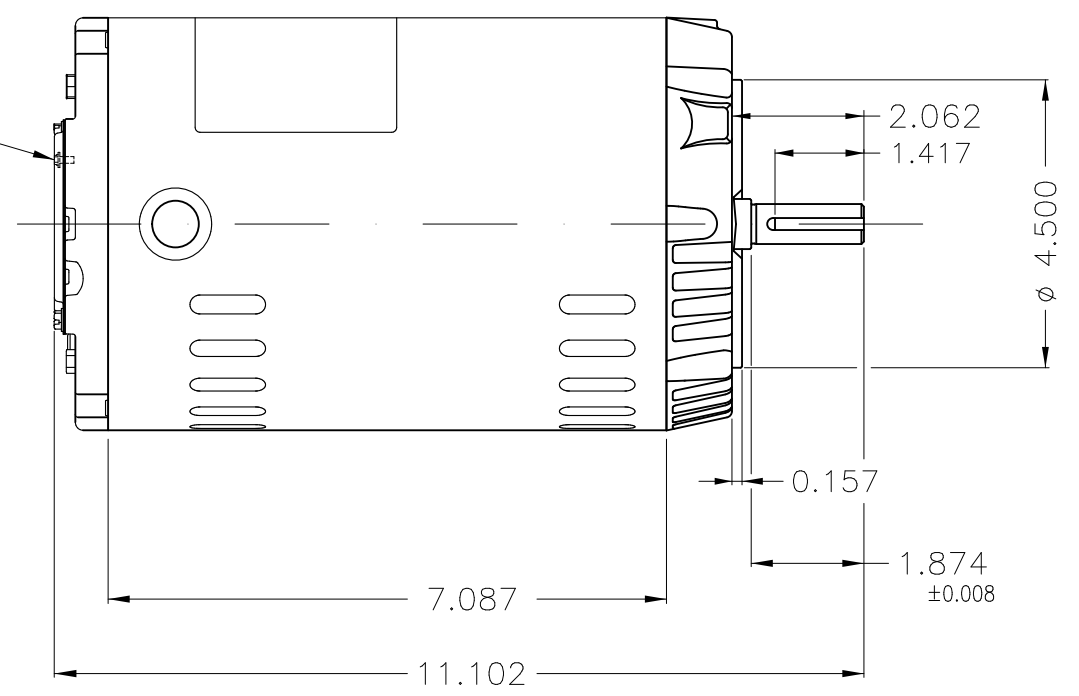
C

D

E



Grounding



Dimensions in inches

Without coating										
Mounting F-1/B14R(D)										
ECM	LOC	SUMMARY OF MODIFICATIONS				EXECUTED	CHECKED	RELEASED	DATE	VER
EXECUTED	PIRWUSER	THREE PH. MOTOR ROLLED STEEL PREM. EFF.				PREVIEW	WDD	SHEET	1 / 1	
CHECKED		FRAME 56C IP21 ODP								
RELEASED										
REL DT.		WMO	Jaragua do Sul	Product Engineering						

0.75 HP 04 Poles 60 Hz

A

XME A3



NEMA
Premium



MADE IN MEXICO

MAT: 12809255

W01.T00IC0X0X

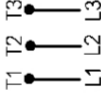
MODEL 7518OT3H56CFL-S

15MAR2022 B/N:

PH 3	Hz 60	HP 0.75
FR 56C		KW 0.55
DUTY CONT.		V 575
ALT 1000 m.a.s.l		A 0.920
INS CL F AT 80K		SFA 1.15
AMB 40°C	DES -	SF 1.25
ENCL ODP	CODE K	PF 0.74
		RPM 1760
		AVG.F.L. 81.1%
		EFF.

Inverter duty motor For use on VPWM 1000:1 VT, 5:1 CT

DE 6203-ZZ ODE 6202-ZZ MOBIL POLYREX EM



T1-BLU

T2-WHT

T3-ORG



INTERCHANGE ANY TWO LINE WIRES TO REVERSE THE ROTATION

WARNING: Motor must be grounded in accordance with local and national electrical codes to prevent serious electrical shocks. Disconnect power source before servicing unit.



AVERTISSEMENT: Le moteur doit être mis à la terre

conformément aux codes électriques locaux et nationaux afin d'éviter tout choc électrique grave. Déconnectez l'alimentation avant l'entretien de la machine.

