

DATA SHEET



Three Phase Induction Motor - Squirrel Cage

Customer :

Product line : Standard Efficiency Three-Phase Product code : 14786505
Catalog # : .7536ES3H56CFL-S

Frame	: 56C	Locked rotor time	: 41s (cold) 23s (hot)
Output	: 0.75 HP (0.550 kW)	Temperature rise	: 80 K
Poles	: 2	Duty cycle	: Cont.(S1)
Frequency	: 60 Hz	Ambient temperature	: -20°C to +40°C
Rated voltage	: 575 V	Altitude	: 1000 m.a.s.l.
Rated current	: 0.904 A	Protection degree	: IP55
L. R. Amperes	: 6.33 A	Cooling method	: IC411 - TEFC
LRC	: 7.0x(Code K)	Mounting	: F-1
No load current	: 0.440 A	Rotation ¹	: Both (CW and CCW)
Rated speed	: 3475 rpm	Noise level ²	: 68.0 dB(A)
Slip	: 3.47 %	Starting method	: Direct On Line
Rated torque	: 1.13 ft.lb	Approx. weight ³	: 20.6 lb
Locked rotor torque	: 250 %		
Breakdown torque	: 290 %		
Insulation class	: F		
Service factor	: 1.15		
Moment of inertia (J)	: 0.0517 sq.ft.lb		

Output	25%	50%	75%	100%	Foundation loads	
Efficiency (%)	58.8	62.0	68.0	72.0	Max. traction	: 22 lb
Power Factor	0.45	0.70	0.79	0.85	Max. compression	: 42 lb

	<u>Drive end</u>	<u>Non drive end</u>
Bearing type	: 6203 ZZ	: 6202 ZZ
Sealing	: V'Ring	: Without Bearing Seal
Lubrication interval	: -	: -
Lubricant amount	: -	: -
Lubricant type	: Mobil Polyrex EM	

Notes

This revision replaces and cancel the previous one, which must be eliminated.

- (1) Looking the motor from the shaft end.
- (2) Measured at 1m and with tolerance of +3dB(A).
- (3) Approximate weight subject to changes after manufacturing process.
- (4) At 100% of full load.

These are average values based on tests with sinusoidal power supply, subject to the tolerances stipulated in NEMA MG-1.

Rev.	Changes Summary	Performed	Checked	Date
Performed by				
Checked by			Page	Revision
Date	11/04/2022		1 / 5	

TORQUE AND CURRENT VS SPEED CURVE

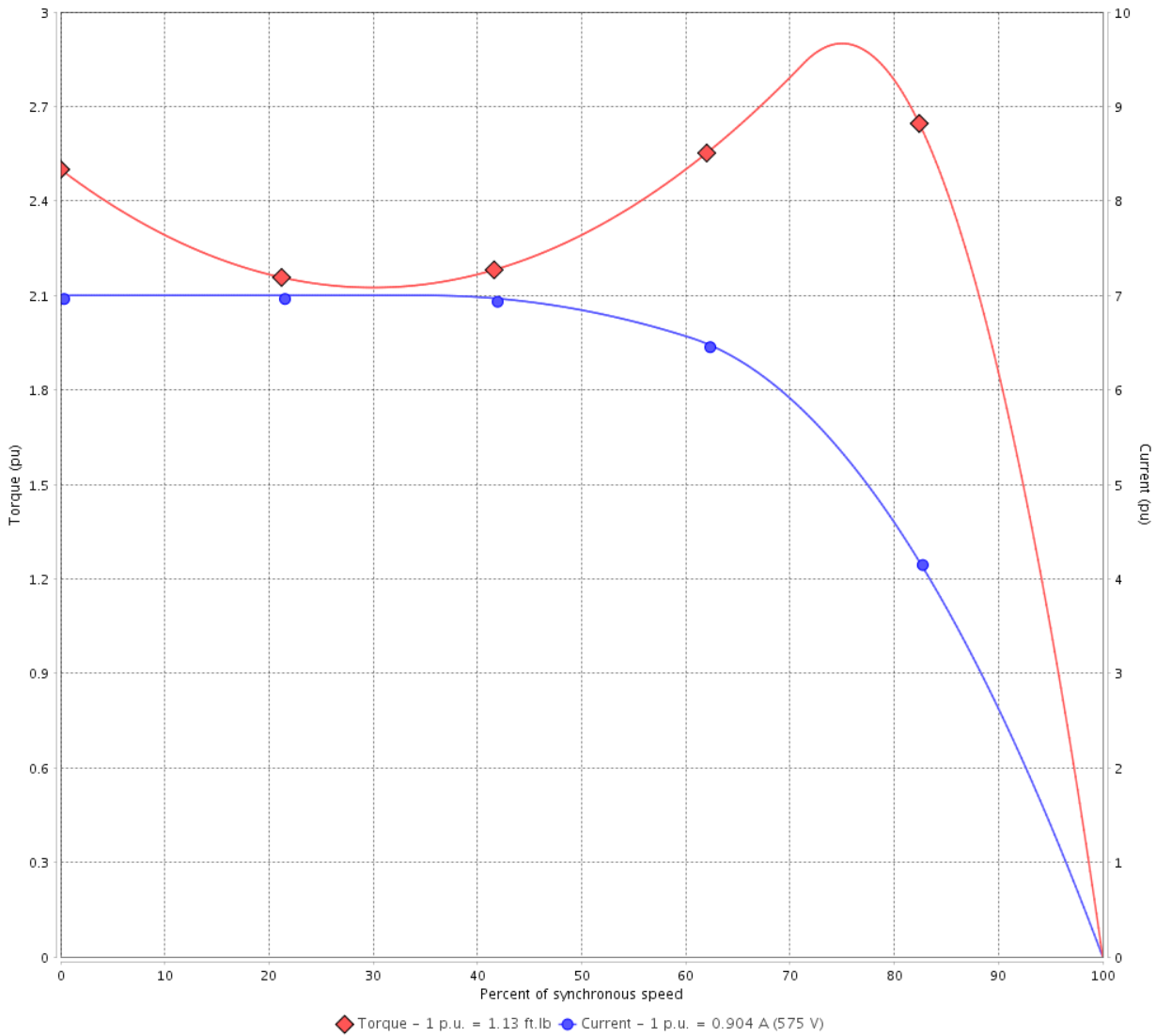
Three Phase Induction Motor - Squirrel Cage



Customer :

Product line : Standard Efficiency Three-Phase Product code : 14786505
 Catalog # : .7536ES3H56CFL-S

TORQUE AND CURRENT VS SPEED CURVE



Performance : 575 V 60 Hz 2P

Rated current	: 0.904 A	Moment of inertia (J)	: 0.0517 sq.ft.lb
LRC	: 7.0	Duty cycle	: Cont.(S1)
Rated torque	: 1.13 ft.lb	Insulation class	: F
Locked rotor torque	: 250 %	Service factor	: 1.15
Breakdown torque	: 290 %	Temperature rise	: 80 K
Rated speed	: 3475 rpm		

Locked rotor time : 41s (cold) 23s (hot)

Rev.	Changes Summary	Performed	Checked	Date
Performed by			Page 2 / 5	Revision
Checked by				
Date	11/04/2022			

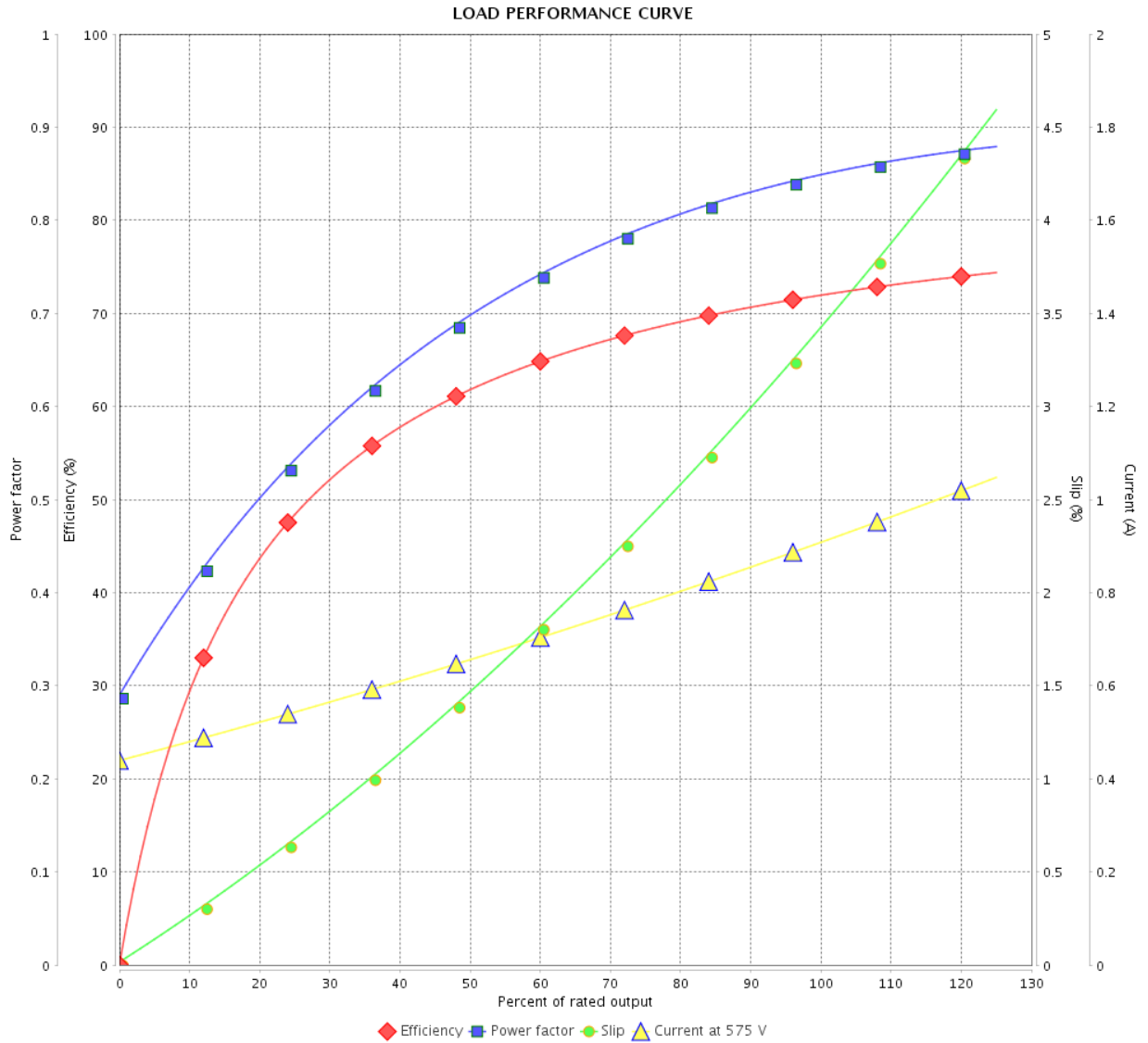
LOAD PERFORMANCE CURVE

Three Phase Induction Motor - Squirrel Cage



Customer : _____

Product line : Standard Efficiency Three-Phase Product code : 14786505
 Catalog # : .7536ES3H56CFL-S



Performance : 575 V 60 Hz 2P

Rated current : 0.904 A
 LRC : 7.0
 Rated torque : 1.13 ft.lb
 Locked rotor torque : 250 %
 Breakdown torque : 290 %
 Rated speed : 3475 rpm

Moment of inertia (J) : 0.0517 sq.ft.lb
 Duty cycle : Cont.(S1)
 Insulation class : F
 Service factor : 1.15
 Temperature rise : 80 K

Rev.	Changes Summary	Performed	Checked	Date
Performed by		Page		Revision
Checked by		3 / 5		
Date		11/04/2022		

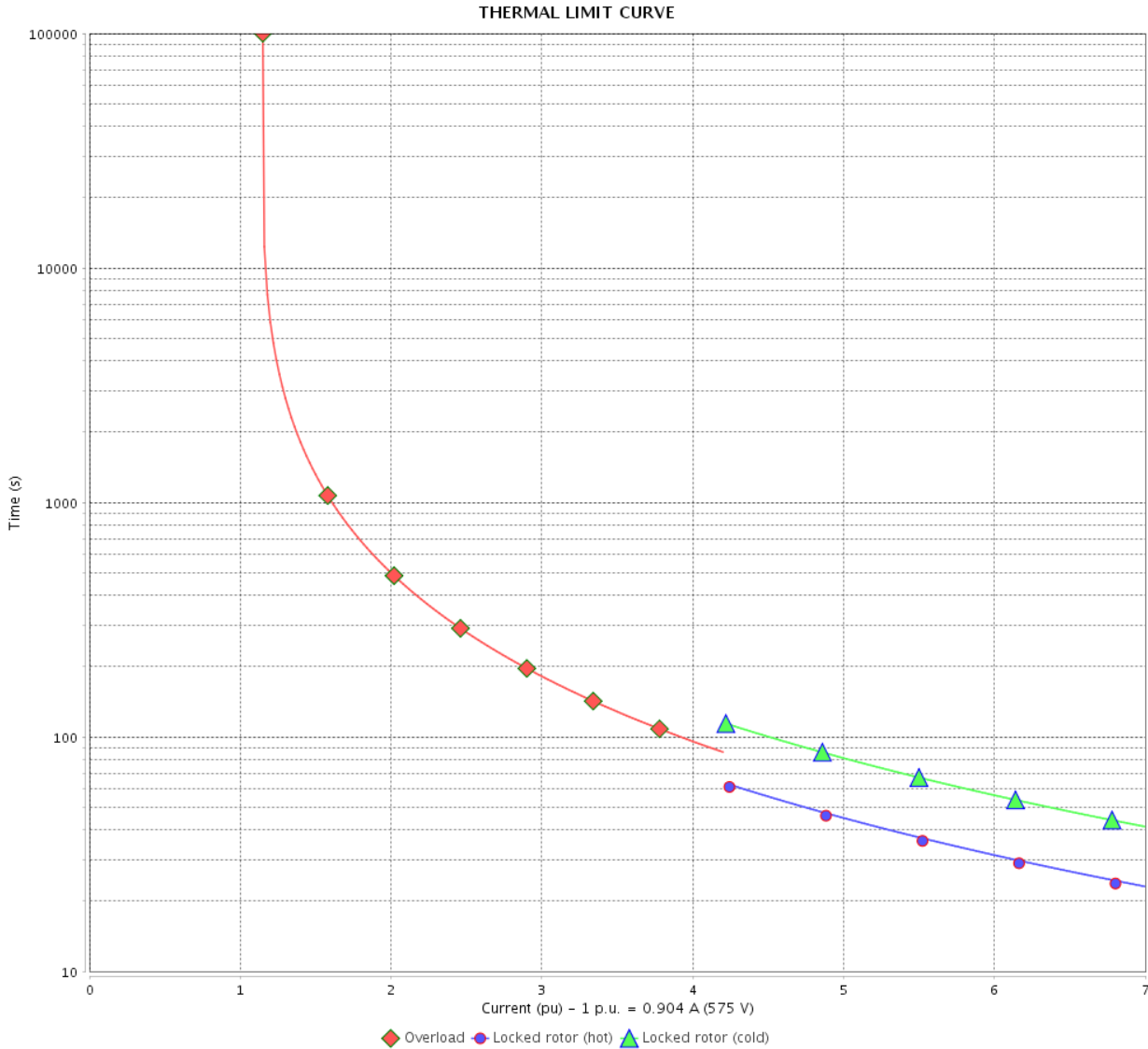
THERMAL LIMIT CURVE

Three Phase Induction Motor - Squirrel Cage



Customer : _____

Product line : Standard Efficiency Three-Phase Product code : 14786505
 Catalog # : .7536ES3H56CFL-S



Performance : 575 V 60 Hz 2P

Rated current	: 0.904 A	Moment of inertia (J)	: 0.0517 sq.ft.lb
LRC	: 7.0	Duty cycle	: Cont.(S1)
Rated torque	: 1.13 ft.lb	Insulation class	: F
Locked rotor torque	: 250 %	Service factor	: 1.15
Breakdown torque	: 290 %	Temperature rise	: 80 K
Rated speed	: 3475 rpm		

Heating constant

Cooling constant

Rev.	Changes Summary	Performed	Checked	Date
Performed by			Page 4 / 5	Revision
Checked by				
Date	11/04/2022			

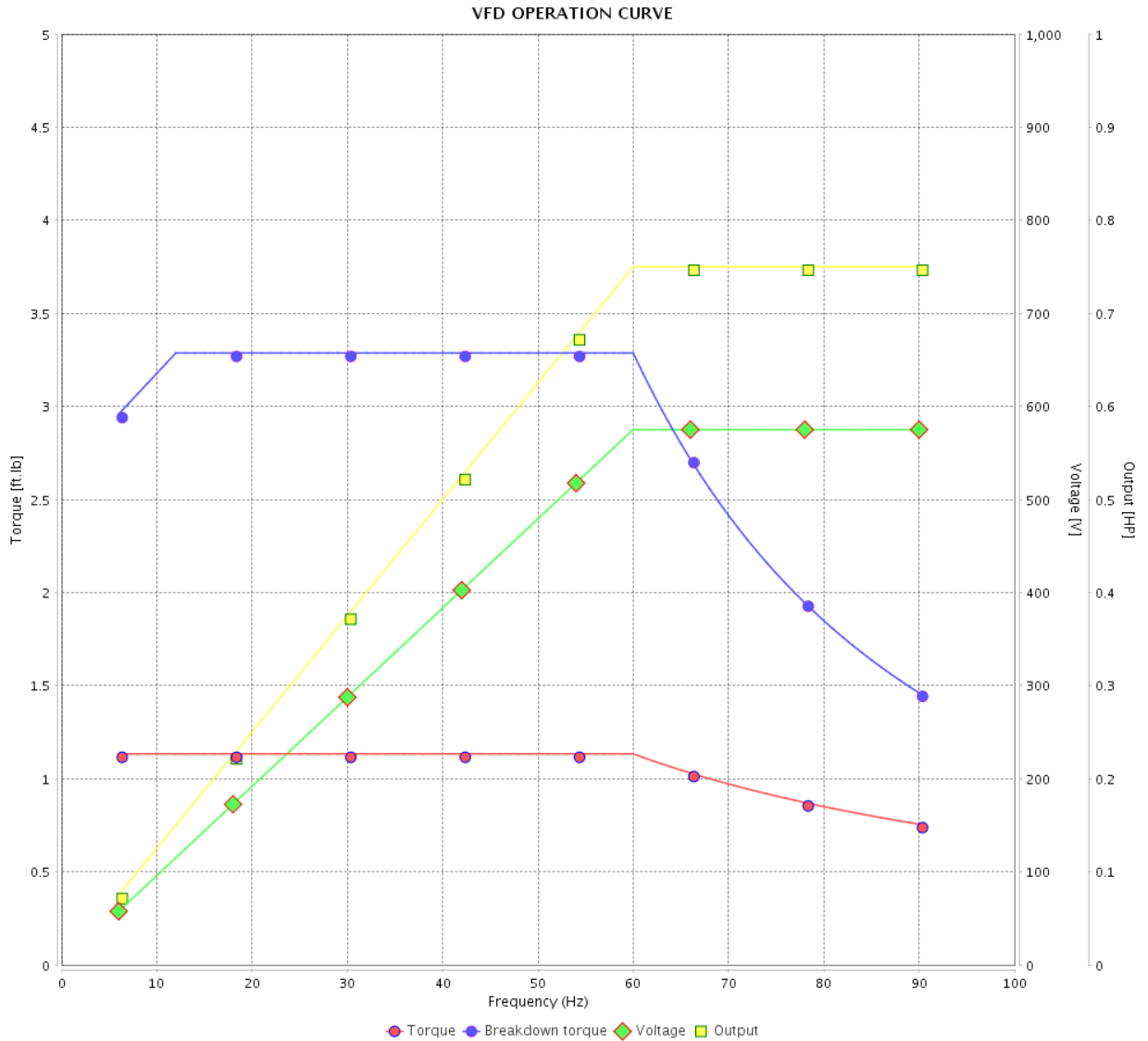
VFD OPERATION CURVE

Three Phase Induction Motor - Squirrel Cage



Customer : _____

Product line : Standard Efficiency Three-Phase Product code : 14786505
 Catalog # : .7536ES3H56CFL-S

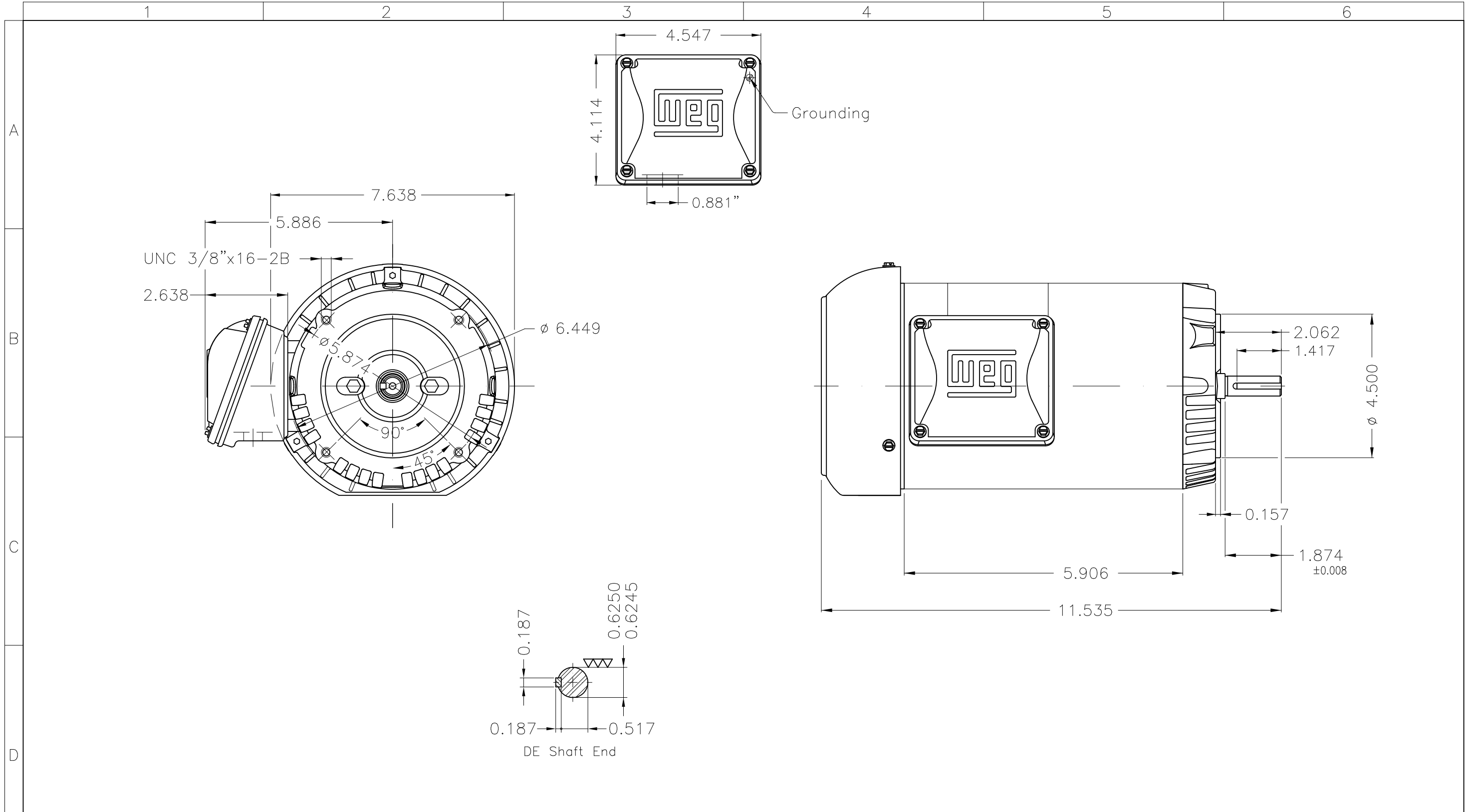


Performance : 575 V 60 Hz 2P

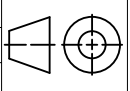
Rated current : 0.904 A
 LRC : 7.0
 Rated torque : 1.13 ft.lb
 Locked rotor torque : 250 %
 Breakdown torque : 290 %
 Rated speed : 3475 rpm

Moment of inertia (J) : 0.0517 sq.ft.lb
 Duty cycle : Cont.(S1)
 Insulation class : F
 Service factor : 1.15
 Temperature rise : 80 K

Rev.	Changes Summary	Performed	Checked	Date
Performed by			Page 5 / 5	Revision
Checked by				
Date	11/04/2022			



0.75 HP 02 Poles 60 Hz

Fan cover - steel plate									
Color Munsell N 1 matte black									
Painting plan 207N									
Mounting F-1/B14R(D)									
ECM	LOC	SUMMARY OF MODIFICATIONS			EXECUTED	CHECKED	RELEASED	DATE	VER
EXECUTED	PIRWBUSER	THREE PH. MOTOR ROLLED STEEL				PREVIEW WDD			
CHECKED		FRAME 56C IP55 TEFC							
RELEASED									
REL DT.		WMO	Jaragua do Sul	Product Engineering	SHEET	1 / 1			



MADE IN MEXICO

MAT: 14786505

W01.TE0IC0X0X

MODEL 7536ES3H56CFL-S

03AUG2021 B/N:

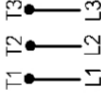


**For 60Hz: Class I, Zone 2, IIC
Class I, Div.2, Gr. A,B,C,D - T3
Div 2 Inverter Duty (SF1.00)
CT 2:1/VT 1000:1**

PH 3	Hz 60	HP 0.75
FR 56C		KW 0.55
DUTY CONT.		V 575
ALT 1000 m.a.s.l		A 0.904
INS CL F AT 80K	IP55	SFA 1.04
AMB 40°C	DES	SF 1.15
ENCL TEFC	CODE K	PF 0.85
		RPM 3475
		NEMA NOM. EFF 72.0%

For safe area-inverter duty motor For use on VPWM 1000:1 VT, 10:1 CT

DE 6203-ZZ ODE 6202-ZZ MOBIL POLYREX EM



T1-BLU

T2-WHT

T3-ORG



INTERCHANGE ANY TWO LINE WIRES TO REVERSE THE ROTATION

WARNING: Motor must be grounded in accordance with local and national electrical codes to prevent serious electrical shocks. Disconnect power source before servicing unit.

AVERTISSEMENT: Le moteur doit être mis à la terre

conformément aux codes électriques locaux et nationaux afin d'éviter tout choc électrique grave. Déconnectez l'alimentation avant l'entretien de la machine.

